



U.S. Department
of Transportation

**Federal Aviation
Administration**

ADMINISTRATOR'S FACT BOOK

June 2004

(Updated quarterly)

Produced by:
Assistant Administrator for Financial Services
Office of Cost and Performance Management
Standards and Information Division

Web site: <http://www.atctraining.faa.gov/factbook>

Table of Contents

FAA Vision and Mission..... Inside Front Cover

FAA ValuesInside Back Cover

Safety

Aviation Accidents by Type of Operations 3*

Aviation Accident Rates by Type of Operation..... 4*

Airspace Incidents by Incident Type..... 5*

Airspace Incident Rates by Incident Type 6*

NTSB U.S. Transportation Fatalities 7

FAA Air Traffic

FAA Air Traffic Activity 8*

Air Route Traffic Control Center Activity 9*

50 Busiest FAA Air Traffic Control Towers 10*

50 Busiest Approach Control Facilities..... 12*

Automated Flight Service Station Activity..... 14*

Airports

Number of U.S. Airports..... 16*

National Airspace Systems Delays 17*

Aircraft

U.S. Air Carrier Activity 18

U.S. General Aviation Activity..... 19

Aircraft Certification Service 20

Industry Trends

Scheduled U.S. Air Carrier Traffic & Fin. Trends 21*

Aviation Forecasts 22

Commercial Space Transportation

AST Licensing and Industry Activity 23

U.S. Commercial Space Launch Schedule 24

Airmen

Active Pilots and Nonpilots 25

FAA Organizational Chart..... Center Fold*

Table of Contents (cont.)

FAA Regional Boundaries Map	28
-----------------------------------	----

FAA Resources

FAA Employment	29*
FAA Percent Minority and Women Employment.....	30*
FAA Major Work Force Employment.....	31*
Labor Relations.....	32*
FAA Finances	33*
FAA Facilities and Aircraft	34*

Organization

FAA Officials–Washington Headquarters.....	35*
FAA Officials–Major Field Organizations.....	38*
FAA Officials–International Offices	40
FAA Flight Plan 2004-2008	41

For further information call APF-100 (202-267-9946)

*Updated this issue

Distribution: A-WXYZE-3; A-FOF-O(STD)

Aviation Accidents by Type of Operation

Type of Operation	Year	Jan	Feb	Mar	Apr	May	Jun	Jul	Aug	Sep	Oct	Nov	Dec	Year Total
Large Air Carrier	2003	5	3	4	8	5	7	2	5	6	3	3	3	54
	2004	0	2	2	3	3								10
Commuter	2003	0	0	0	0	0	0	2	0	0	0	0	0	2
	2004	0	1	0	1	0								2
Air Taxi	2003	7	6	4	7	6	7	8	4	7	3	10	7	76
	2004	5	2	8	4	3								22
General Aviation	2003	103	88	138	147	156	210	200	171	157	152	100	110	1,732
	2004	82	108	85	108	140								523
Rotorcraft*	2003	15	10	16	16	21	31	31	13	14	13	16	16	212
	2004	7	13	9	13	15								57

* Part 135 and US registered general aviation rotorcraft accidents.

Note: Preliminary data and subject to change.
As of: 06/07/04

Source: AAI-200
(202) 267-3279

Aviation Accident Rates by Type of Operation

Type of Operation	2000		2001		2002		2003		% Chg 03-02	
	Number	Rate	Number	Rate	Number	Rate	Number	Rate	Number	Rate
Large Air Carriers.....	56	.31	46	.24	41	.24	54	.32	32%	33%
Commuter.....	12	3.25	7	2.33	8	3.18	2	0.72	-75%	-77%
Air Taxi.....	80	2.04	72	2.40	59	2.03	77	2.61	31%	29%
General Aviation.....	1,837	6.57	1,726	6.78	1,713	6.69	1,732	6.71	1%	0%

➤ Accident Rates are per 100,000 Flight Hours. Flight hours compiled by FAA

Rotorcraft rates discontinued, currently under review

Note: 2003 data preliminary.

As of: 03/22/04

Source: NTSB

www.nts.gov/aviation

Airspace Incidents by Incident Type

Incident Type	Year	Jan	Feb	Mar	Apr	May	Jun	Jul	Aug	Sep	Oct	Nov	Dec	Year Total
Near Midair Collisions	2003	10	13	10	9	13	17	13	20	19	25	7	6	162
	2004	11	16	10	8									45
Pilot Deviations	2003	127	150	287	248	184	238	268	271	241	245	248	191	2,698
	2004	165	149	219	219									752
Operational Errors	2003	69	86	99	106	109	106	134	133	102	98	91	78	1,211
	2004	74	79	92	78									323
Vehicle Pedestrian Deviations	2003	26	27	31	21	29	21	32	27	22	27	21	18	302
	2004	17	21	24	26									88
Surface Incidents	2003	67	72	83	60	83	80	89	93	73	83	75	63	921
	2004	50	64	70	77									261
Runway Incursions*	2003	29	26	31	20	26	29	24	36	24	32	25	30	332
	2004	13	27	30	25	20	23							138

Note: Preliminary data and subject to change.

Source: ATX-400

(202) 385-4802

*ATS

(202) 385-4788

As of: 06/04/04

*As of: 06/18/04

Airspace Incident Rates by Incident Type

Incident Type									Percent Change	
	2000		2001		2002		2003		2002 - 2003 (4)	
	Number	Rate	Number	Rate	Number	Rate	Number	Rate	Number	Rate
Operational Errors (1).....	1,138	.69	1,181	.74	1,040	.66	1,211	.78	16%	19%
Pilot Deviations (2).....	1,900	1.15	1,975	1.20	1,922	1.17	2,698	1.64	40%	40%
Surface Incidents (3).....	1,391	2.06	1,249	1.91	1,010	1.56	921	1.47	-9%	-5%

(1) Per 100,000 Facility Activities

(2) Per 100,000 Flight Hours

(3) Per 1,000,000 Airport Operations

(4) Calculations use fifteen decimal places for rates (rounded two places for display).

Note: 2002 data preliminary and subject to change.

Source: ATX-400

(202) 385-4802

As of: 06/04/04

National Transportation Safety Board

2001-2000 U.S. Transportation Fatalities

	2002 ¹	2001
Highway		
Passenger cars.....	20,416	20,320
Light Trucks and Vans.....	12,182	11,718
Pedestrians.....	4,808	4,901
Motorcycles.....	3,244	3,197
Pedalcycles ²	662	732
Medium and heavy trucks.....	684	708
Buses.....	45	34
All Other ³	774	581
Total.....	42,815	42,191
Grade Crossings ⁴	(356)	(421)
Rail		
Intercity ⁵		
Trespassers and nontrespassers ⁶	603	597
Employees and contractors.....	31	26
Passengers on trains.....	7	3
Transit ⁷		
Light, heavy, and commuter rail.....	220	197
Total.....	861	823
Marine		
Recreational Boating.....	750	681
Cargo Transport.....	17	38
Commercial fishing ⁸	19	35
Commercial Passengers.....	7	18
Total.....	793	772
Aviation		
General Aviation.....	576	562
Airlines ⁹	0	531
Air Taxi.....	33	60
Commuter.....	0	13
Foreign/Unregistered ¹⁰	9	5
Total.....	618	1,171
Pipeline		
Gas.....	10	7
Liquids.....	1	0
Total.....	11	7
GRAND TOTAL.....	45,098	44,964

¹ 2002 preliminary estimates. Aviation data from NTSB; all other from DOT. ² Includes bicycles or other cycles. ³ Includes vehicle occupant fatalities in vehicle types; ex. farm or construction equipment. ⁴ Grade crossing fatalities not counted separately for determining the grand totals because they are included in the highway and rail categories, as appropriate. ⁵ Data reported to Federal Rail Administration (FRA). ⁶ Includes persons on railroad property with and without permission. Does not include motor vehicle occupants killed at grade crossings. ⁷ Data reported to the FTA. Fatalities for commuter rail operations may also be reported to the FRA and may be included in the intercity railroad fatalities. ⁸ Refers to only operational fatalities. ⁹ Of the 531 airline fatalities in 2001, 265 occurred aboard the four hijacked airplanes on September 11, 2001. ¹⁰ Includes non-U.S. registered aircraft involved in accidents in the U.S.

Air Traffic

FAA Air Traffic Activity (In Thousands)

Aircraft Handled by FAA ARTCC's	Jan-Apr 2004*	Jan-Apr 2003	Jan-Dec 2003
Air Carrier.....	7,862	7,462	22,749
Air Taxi.....	3,345	2,979	9,337
General Aviation.....	2,729	2,550	8,060
Military.....	1,353	1,260	3,877
TOTAL....	15,289	14,251	44,023
Airport Operations Logged by FAA Towers			
Air Carrier.....	4,181	4,133	12,461
Air Taxi.....	3,452	3,142	10,092
General Aviation.....	6,901	7,062	22,350
Military.....	622	625	1,930
TOTAL....	15,156	14,962	46,833
Instrument Operations Logged by FAA Towers			
Air Carrier.....	4,644	4,539	13,689
Air Taxi.....	4,200	3,822	12,200
General Aviation.....	5,659	5,563	18,428
Military.....	1,049	1,043	3,225
TOTAL....	15,552	14,967	47,542
Flight Services Logged by: **	Jan-May 2004*	Jan-May 2003	Jan-Dec 2003
Flight Service Stations.....	10,007	10,514	891
Automated Flight Service Stations.....	277	297	26,570
TOTAL....	10,284	10,811	

*Preliminary

As of: 06/16/04

***As of: 06/07/04

Source: APO-130

(202) 267-3350

**Source: ATX-400

(202) 385-4734

Air Route Traffic Control Center Activity

CY 2003 Rank	Center	Aircraft Handled (000's)		
		Jan-Apr 2004*	Jan-Apr 2003	Jan-Dec 2003
1	Cleveland, OH.....	991	936	2,975
2	Atlanta, GA.....	1,048	961	2,959
3	Chicago, IL.....	956	898	2,852
4	New York, NY.....	970	909	2,805
5	Indianapolis, IN.....	925	853	2,713
6	Washington, DC.....	921	827	2,595
7	Jacksonville, FL.....	860	791	2,274
8	Memphis, TN.....	757	722	2,228
9	Miami, FL.....	896	800	2,182
10	Fort Worth, TX.....	737	686	2,131
11	Kansas City, KS.....	664	660	2,053
12	Minneapolis, MN.....	674	631	2,041
13	Los Angeles, CA.....	726	666	2,021
14	Houston, TX.....	715	658	2,005
15	Boston, MA.....	569	546	1,780
16	Albuquerque, NM.....	599	566	1,701
17	Denver, CO.....	600	547	1,684
18	Oakland, CA.....	558	514	1,601
19	Salt Lake City, UT.....	490	472	1,461
20	Seattle, WA.....	410	401	1,272
21	Anchorage, AK.....	178	170	572
22	Guam **.....	44	38	120

*Preliminary

**Center Radar Approach Control (CERAP)

As of: 06/16/04

Source: APO-130
(202) 267-3350

50 Busiest FAA Airport Traffic Control Towers

CY 2003 Rank	Tower and State	Airport Operations (000's)		
		Jan-Apr 2004*	Jan-Apr 2003	Jan-Dec 2003
1	Chicago/O'Hare Int'l., IL.....	325	297	931
2	Atlanta International, GA.....	319	290	912
3	Dallas/Ft. Worth Int'l., TX.....	270	249	776
4	Los Angeles Int'l, CA.....	211	206	623
5	Phoenix Sky Harbor Int'l, AZ.....	199	197	591
6	Denver International, CO.....	185	164	510
7	Minneapolis-St. Paul Int'l, MN.....	174	163	508
8	Covington/Cincinnati Int'l, KY.....	167	160	506
9	Las Vegas/McCarran Int'l, NV.....	188	164	501
10	Detroit Metro Wayne Co., MI.....	169	161	492
11	Houston/G Bush Intercont'l, TX.....	170	151	479
12	Van Nuys, CA.....	148	148	461
13	Philadelphia Int'l, PA.....	149	143	446
14	Charlotte/Douglas Int'l, NC.....	151	138	442
15	Miami International, FL.....	138	149	411
16	Newark International, NJ.....	143	132	411
17	Memphis International, TN.....	126	133	402
18	Salt Lake City Int'l, UT.....	136	129	400
19	Lambert-St. Louis Int'l, MO.....	95	136	394
20	Phoenix-Deer Valley, AZ.....	124	133	389
21	Orlando/Sanford, FL.....	121	122	385
22	Boston/Logan Int'l, MA.....	127	117	379
23	La Guardia, NY.....	132	121	379
24	Washington Dulles Int'l, VA.....	126	119	366
25	Denver/Centennial.....	109	108	361

*Preliminary

As of: 06/16/04

50 Busiest FAA Airport Traffic Control Towers

CY 2003 Rank	Tower and State	Airport Operations (000's)		
		Jan-Apr 2004*	Jan-Apr 2003	Jan-Dec 2003
26	Pittsburgh International, PA.....	117	117	361
27	Santa Ana/John Wayne, CA.....	121	115	358
28	Seattle Tacoma Int'l, WA.....	112	110	355
29	Metropolitan Oakland Int'l.....	111	112	343
30	Long Beach/Daugherty, CA.....	110	113	339
31	Daytona Beach Int'l, FL.....	123	115	337
32	San Francisco Int'l, CA.....	115	109	335
33	Chicago Midway, IL.....	109	101	328
34	Seattle/Boeing Field, WA.....	95	87	311
35	Honolulu International, HI.....	99	100	306
36	Orlando International, FL.....	109	100	301
37	Baltimore/Wash. Int'l, MD.....	99	93	300
38	Prescott/E. A. Love Field, AZ.....	113	121	297
39	Anchorage International, AK.....	77	73	293
40	Tulsa/Riverside, OK.....	94	97	292
41	John F. Kennedy Int'l, NY.....	101	96	291
42	Grand Forks International, FL.....	90	102	289
43	Fort Lauderdale/Hollywood, FL.....	114	103	288
44	Mesa/Falcon Field, AZ.....	100	102	282
45	Pontiac/Oakland Co. Int'l, MI.....	69	82	276
46	Portland International, OR.....	84	85	266
47	San Antonio International, TX.....	76	77	262
48	Cleveland Hopkins Int'l, OH.....	85	79	258
49	Washington National, DC.....	89	82	254
50	Tucson International, AZ.....	87	92	248

50 Busiest Radar Approach Control Facilities

CY 2003 Rank	Facilities/State	Instrument Ops (000s)		
		Jan-Apr 2004*	Jan-Apr 2003	Jan-Dec 2003
1	Southern Calif. TRACON, CA.....	689	674	2,053
2	New York TRACON, NY.....	631	610	1,947
3	North California TRACON, CA.....	513	488	1576
4	Potomac TRACON, DC.....	551	383	1,526
5	Chicago TRACON, IL.....	482	446	1,419
6	Atlanta TRACON, GA.....	463	421	1,324
7	Dallas/Ft Worth, TRACON, TX.....	430	406	1,265
8	Houston TRACON, TX.....	297	273	858
9	Miami International, FL.....	329	322	853
10	Phoenix TRACON, AZ.....	264	257	755
11	Denver TRACON, CO.....	250	224	707
12	Detroit TRACON, MI.....	225	213	684
13	Minneapolis TRACON, MN.....	215	203	648
14	Covington/Cincinnati Int'l, KY.....	214	198	644
15	Philadelphia International, PA.....	207	198	633
16	Las Vegas TRACON, NV.....	218	201	625
17	San Juan CERAP, PR.....	239	211	617
18	Salt Lake City TRACON, UT.....	174	189	597
19	Orlando International, FL.....	213	201	581
20	Charlotte/Douglas Int'l, NC.....	194	178	576
21	Daytona Beach Int'l, FL.....	207	192	562
22	Tampa International, FL.....	210	197	559
23	St Louis TRACON, MO.....	146	181	542
24	Seattle/Tacoma TRACON, WA.....	167	160	531
25	Boston TRACON, MA.....	187	153	513

* Preliminary

Source: APO-130
(202) 267-3350

As of: 06/16/04

50 Busiest Radar Approach Control Facilities

CY 2003 Rank	Facilities/State	Instrument Ops (000's)		
		Jan-Apr 2004*	Jan-Apr 2003	Jan-Dec 2003
26	Honolulu Control Facility, HI	169	165	496
27	Memphis International, TN.....	148	154	475
28	Pittsburgh International, PA.....	145	145	457
29	San Antonio Int'l, TX.....	129	137	451
30	Jacksonville Int'l, FL.....	154	151	437
31	Pensacola TRACON, FL.....	144	138	423
32	Port Columbus Int'l, OH.....	120	120	383
33	Cleveland Hopkins Int'l, OH.....	125	108	371
34	Palm Beach International, FL.....	148	141	358
35	Dayton International, OH.....	107	103	356
36	Corpus Christi, TX.....	114	106	346
37	Washington National, DC.....	116	125	340
38	Portland TRACON, OR.....	101	100	332
39	Baltimore-Washington Int'l, MD.....	104	122	332
40	Austin, TX.....	99	102	325
41	Milwaukee/Gen Mitchell Intl, WI....	98	99	324
42	Anchorage TRACON, AK.....	91	88	313
43	Indianapolis International, IN.....	97	93	303
44	Raleigh-Durham Int'l, NC.....	103	94	302
45	Norfolk International, VA.....	95	91	302
46	Nashville International, TN.....	100	94	299
47	Oklahoma City/Will Rogers, OK	80	95	292
48	Yankee TRACON, CT.....	73	96	283
49	Kansas City International, MO.....	90	90	274
50	Louisville Intl/Standiford, KY.....	85	87	272

Automated Flight Service Stations Activity

CY 2003 Rank	AFSS/State	Flight Services (000's)		
		Jan-May 2004*	Jan-May 2003	Jan-Dec 2003
1	Miami AIFSS, FL.....	592	523	1,163
2	St. Petersburg, FL.....	425	516	1,115
3	Leesburg, VA.....	321	289	821
4	Fort Worth, TX.....	306	317	757
5	Lansing, MI.....	88	273	747
6	Macon, GA.....	287	310	735
7	Prescott, AZ.....	280	283	654
8	Denver, CO.....	234	242	629
9	Millville, NJ.....	213	241	622
10	Raleigh, NC.....	224	240	610
11	San Angelo, TX.....	259	254	603
12	Kankakee, IL.....	202	224	594
13	Seattle, WA.....	208	221	580
14	Bridgeport, CT.....	182	181	557
15	Princeton, MN.....	197	201	549
16	Conroe, TX.....	209	216	504
17	Green Bay, WI.....	166	166	499
18	Mc Alester, OK.....	199	208	491
19	Oakland AIFSS, CA.....	181	200	482
20	Gainesville, FL.....	187	222	476
21	Anniston, AL.....	195	190	475
22	Hawthorne, CA.....	186	192	475
23	Williamsport, PA.....	191	158	469
24	Altoona, PA.....	172	158	456
25	Columbia, MO.....	170	178	450
26	Terre Haute, IN.....	163	172	445
27	Anderson, SC.....	135	178	425
28	Kenai AIFSS, AK.....	144	145	421
29	Albuquerque, NM.....	172	166	387
30	Burlington, VT.....	126	127	392

* Preliminary

Source: ATX-400
(202) 385-4734

Automated International Flight Service Station--AIFSS

As of: 06/07/04

Automated Flight Service Stations Activity

CY 2003 Rank	AFSS/State	Flight Services (000's)		
		Jan-May 2004*	Jan-May 2003	Jan-Dec 2003
31	Riverside, CA.....	164	172	385
32	Reno, NV.....	163	145	379
33	St. Louis, MO.....	149	148	378
34	Cleveland, OH.....	137	139	378
35	Jonesboro, AR.....	148	153	374
36	Islip AIFSS, NY.....	83	143	370
37	Nashville, TN.....	146	143	361
38	Mc Minnville, OR.....	122	133	350
39	Grand Forks, ND.....	130	149	347
40	Rancho Murieta, CA.....	153	132	346
41	Bangor, ME.....	113	123	344
42	Dayton, OH.....	123	124	343
43	Wichita, KS.....	123	124	328
44	San Juan AIFSS, PR.....	119	132	320
45	Cedar City, UT.....	115	149	314
46	De Ridder, LA.....	129	127	308
47	Elkins, WV.....	128	142	285
48	San Diego, CA.....	119	118	276
49	Louisville, KY.....	101	104	266
50	Fort Dodge, IA.....	101	98	266
51	Greenwood, MS.....	100	106	258
52	Buffalo, NY.....	84	88	251
53	Honolulu, HI.....	118	99	246
54	Huron, SD.....	92	92	244
55	Columbus, NE.....	77	84	213
56	Great Falls, MT.....	74	71	205
57	Jackson, TN.....	73	79	191
58	Fairbanks, AK.....	59	62	182
59	Boise, ID.....	64	62	176
60	Casper, WY.....	59	58	166
61	Juneau, AK.....	46	42	138

Airports

Number of U.S. Airports ¹ (As of December 31)

	2003	2002	2001
Total Airports	19,581	19,572	19,356
Public Use Airports.....	5,286	5,286	5,294
# with Paved Runways.....	3,938	3,940	3,947
# with Unpaved Runways....	1,348	1,346	1,347
# with Lighted Runways.....	4,026	4,024	4,034
# with Unlighted Runways...	1,260	1,262	1,260
Private Use Airports.....	14,295r	14,286	14,062
# with Paved Runways.....	4,678	4,632	4,555
# with Unpaved Runways...	9,617	9,654	9,507
# with Lighted Runways.....	1,223	1,183	1,118
# with Unlighted Runways..	13,072	13,103	12,944
Public use airports abandoned...	19	16	26
Private use airports abandoned.	214	121	220
Certificated Airports*	628	633	635
Civil	555	558	560
Military	73	75	75

¹ Includes civil and joint-use civil-military airports, heliports, STOLports, and seaplane bases in the U.S. and its territories.

² Preliminary

* Certificated airports serve Air Carrier Operations with aircraft seating more than 30 passengers. (FAR Part 139).

r revised

Source: AAS-330
(202) 267-8752

As of: 12/31/03

National Airspace Total System Delays

Year	Jan	Feb	Mar	Apr	May	Jun	Jul	Aug	Sep	Oct	Nov	Dec	YTD Total
2004*	28,104	32,274	34,001	32,459	50,800								177,638
2003	16,159	18,260	25,387	17,474	26,544	27,413	32,833	37,066	28,882	21,422	34,116	31,332	316,888
2002	14,158	13,821	20,020	24,027	28,533	33,770	32,304	29,056	24,493	25,266	17,712	22,489	285,649
2001	27,894	31,599	30,040	30,260	36,460	41,607	40,037	49,423	18,628	13,365	13,249	15,541	348,103 r/
2000	26,015	27,208	32,205	35,332	36,570	50,114	44,430	47,893	43,357	43,794	34,365	29,006	450,289 r/

Delays of 15 minutes or longer

r/ Revised

* Preliminary information that is subjected to change

As of: 06/18/04

Source: ATT-220
(703) 904-4470

Aircraft

U.S. Air Carrier Activity

	CY 2002	CY 2001	CY 2000
Total Number of Aircraft¹.....	19,578	19,445	19,399
Type of Carrier			
Domestic, flag, supplemental, scheduled, cargo air carriers, and commercial operators.....	7,576	7,556	7,368
Commuter Air Carriers and Air Taxis.....	12,002	11,889	12,031
Total Number of Aircraft¹.....	19,578	19,445	19,399
Type of Aircraft			
Jet.....	8,675	8,294	7,769
Turboprop.....	3,777	3,752	3,857
Piston.....	4,605	4,970	5,358
Rotary Wing.....	2,521	2,429	2,415
Air Carrier Traffic Statistics² (Millions)*			
Passenger miles flown.....	654,068	664,849	708,926
Passenger enplanements.....	630	622	678
Ton miles.....	95,919	94,683	116,096
Aircraft miles flown.....	6,838	6,814	7,039
Passenger load factor ³			
Domestic.....	70.3%	69.1%	71.2%
International.....	76.6%	72.8%	76.0%

¹ Source: Vital Information System

² Includes domestic and international scheduled service, of Certificated Route Air Carriers only.

³ Proportion of aircraft seating capacity that is sold.

As of: 12/23/03

Source: AFS-40
(202) 385-4514
*BTS (K-25)
(202) 366-8513

U.S. General Aviation and Air Taxi Activity

(Calendar Years)

	Estimated Active Aircraft (thousands)		Estimated Hours Flown (Millions)	
	2001	2000	2001	2000
Total	211.2	217.5	29.1	31.0
By Type Aircraft				
Piston.....	163.3	170.5	20.9	22.2
Turboprop.....	6.6	5.8	1.9	2.0
Jet.....	7.8	7.0	2.7	2.8
Rotary Wing.....	6.8	7.2	2.1	2.3
Other.....	6.5	6.7	0.3	0.4
Experimental.....	20.4	20.4	1.2	1.3
By Type Flying				
Corporate.....	7.8	11.0	2.7	3.8
Business.....	21.6	25.2	3.4	3.6
Personal.....	158.3	148.2	12.4	11.7
Instructional.....	10.5	14.9	4.6	5.4
Aerial Application.....	2.9	4.3	1.0	1.4
Aerial Observation.....	4.6	5.1	1.5	1.6
Aerial Other.....	0.5	1.0	0.2	N/A
External Load.....	0.2	0.2	0.1	0.2
Other Work.....	1.1	1.8	0.3	0.5
Sightseeing.....	0.5	0.9	0.2	0.2
Air Tours.....	0.3	0.3	0.2	0.2
Air Taxi.....	1.9	3.7	2.2	1.7
Air Medical Services...	1.0	1.0	0.4	0.4

N/A = Not Applicable

Source: APO-110

As of: 1/16/03

(202) 267-3103

Aircraft Certification Service

Aircraft Certification Mission and Program Profiles

	FY 2002	FY 2001
Type Certificates/Supplemental Type Certificates Issued.....	830	817
Other Design Approvals Issued.....	5,820	5,900
Production Approvals (Including Amendments) Issued.....	2,678	2,729
Airworthiness Certificates Issued.....	757	619
New Airworthiness Directives (AD) Issued.....	389	529
New Designees (Representative of the Administrator) Appointed.....	1,019	870
Total Active Designees.....	4,813	4,750

As of: 9/30/02

Source: AIR-503
(202) 267-7260

Industry Trends

Scheduled U.S. Air Carrier Traffic and Financial Trends

	1st QTR FY 2004	1st QTR FY 2003	Numerical Change	Percent Change
TRAFFIC				
ASM'S (in millions)				
Majors.....	196,110	199,068	(2,958)	(1.5)
Nationals.....	24,552	19,795	4,756	24.0
Regionals.....	6,389	5,214	1,175	22.5
Totals.....	227,050	224,077	2,974	1.3
RPM's (in millions)				
Majors.....	143,424	140,276	3,148	2.2
Nationals.....	17,833	13,429	4,405	32.8
Regionals.....	4,255	3,236	1,018	31.5
Totals.....	165,512	156,941	8,571	5.5
Load Factor (in percent)				
Majors.....	73.1	70.5	2.7	
Nationals.....	72.6	67.8	4.8	
Regionals.....	66.6	62.1	4.5	
Totals.....	72.9	70.0	2.9	
FINANCIAL				
Revenues (in millions)				
Majors.....	\$25,883	\$23,829	2,053	8.6
Nationals.....	2,983	2,492	490	19.7
Regionals.....	897	547	351	64.2
Totals.....	\$29,763	\$26,868	\$2,894	10.8
Expenses (in millions)				
Majors.....	\$26,211	\$26,394	(\$183)	(0.7)
Nationals.....	2,719	2,464	254	10.3
Regionals.....	813	512	301	8.7
Totals.....	\$29,743	\$29,370	\$373	1.3
Operating Profit/Loss (in millions)				
Majors.....	(\$328)	(\$2,564)	\$2,236	
Nationals.....	264	28	236	
Regionals.....	84	34	50	
Totals.....	\$20	(\$2,502)	\$2,522	

*Atlantic Coast Airlines and ExpressJet commenced reporting financial results using Form 41 in January of 2003. As a result, financial data for these carriers is not included in 1st quarter FY 2003 totals.

Source: APO-110

As of: 04/30/04

21

(202) 493-4236

Aviation Forecasts

Actual Forecast
FY 2002 FY 2006

FAA FACILITY WORKLOAD

Aircraft Handled by FAA ARTCC's (Millions)

Air Carrier.....	22.8	24.3
Air Taxi/Commuter.....	8.8	10.1
General Aviation.....	8.2	8.7
Military.....	3.9	3.9

Operations Logged by FAA Towers (Millions)

Airport.....	64.9	69.2
Instrument.....	48.7	52.1

Flight Services Logged by Flight Services Stations (Millions)

	29.0	30.7
--	------	------

CIVIL AVIATION ACTIVITY

Certificated Route Air Carrier

Revenue Passenger Enplanements (Millions)*.....	536.9	616.7
Revenue Passenger Miles (Billions)*.....	601.3	694.4

Air Carrier Aircraft.....

	5,214	5,426
--	-------	-------

General Aviation Estimated

Hours Flown (Millions)**.....	29.5	31.2
Active Aircraft (Thousands)**.....	211.0	217.1

ESTIMATED FUEL CONSUMED BY U.S. DOMESTIC CIVIL AVIATION (Millions of Gallons)

Jet Fuel

Air Carrier.....	17,521	19,758
General Aviation.....	1,015	1,227

Aviation Gas

Air Carrier.....	2	2
General Aviation.....	319	337

Active Pilots (Thousands)**.....	661,358	690,775
---	----------------	----------------

** Calendar Year

Source: APO-110
(202) 493-4236

As of: 3/31/03

U.S. Commercial Space Transportation Licensed Activity

	CY 2004 (Projected)	CY 2003	CY 2002
Licensed Commercial Launches			
TOTAL	12	8	7
Number of Orbital Launches	10	8	6
Number of Sub-Orbital Launches	2	0	1
By Launch Vehicle Type			
Delta Family (Boeing Company)	0	0	2
Atlas Family (Lockheed Martin)	4	4	2
Pegasus (Orbital Sciences Corp.)	1	1	0
Taurus (Orbital Sciences Corp.)	1	0	0
Zenit 3SL (KB Yuzhnoye, Ukraine)	4	3	1
other suborbital	2	0	1
By Launch Site (Federal)			
Cape Canaveral AF Station, FL	5	4	4
Vandenberg AFB, CA	1	1	1
Kwajalein Missile Range	0	0	0
By Launch Site (Commercial)			
California Spaceport	0	0	0
Florida Space Authority	0	0	0
Virginia Space Flight Center	0	0	0
Kodiak Launch Complex (Alaska)	0	0	0
Pacific Ocean / International Sites	4	2	2
Mojave Airport (CA)	2	0	0

Source: AST

(202) 267-7989

As of: 03/15/04

United States Commercial Space Launch Schedule, CY 2004

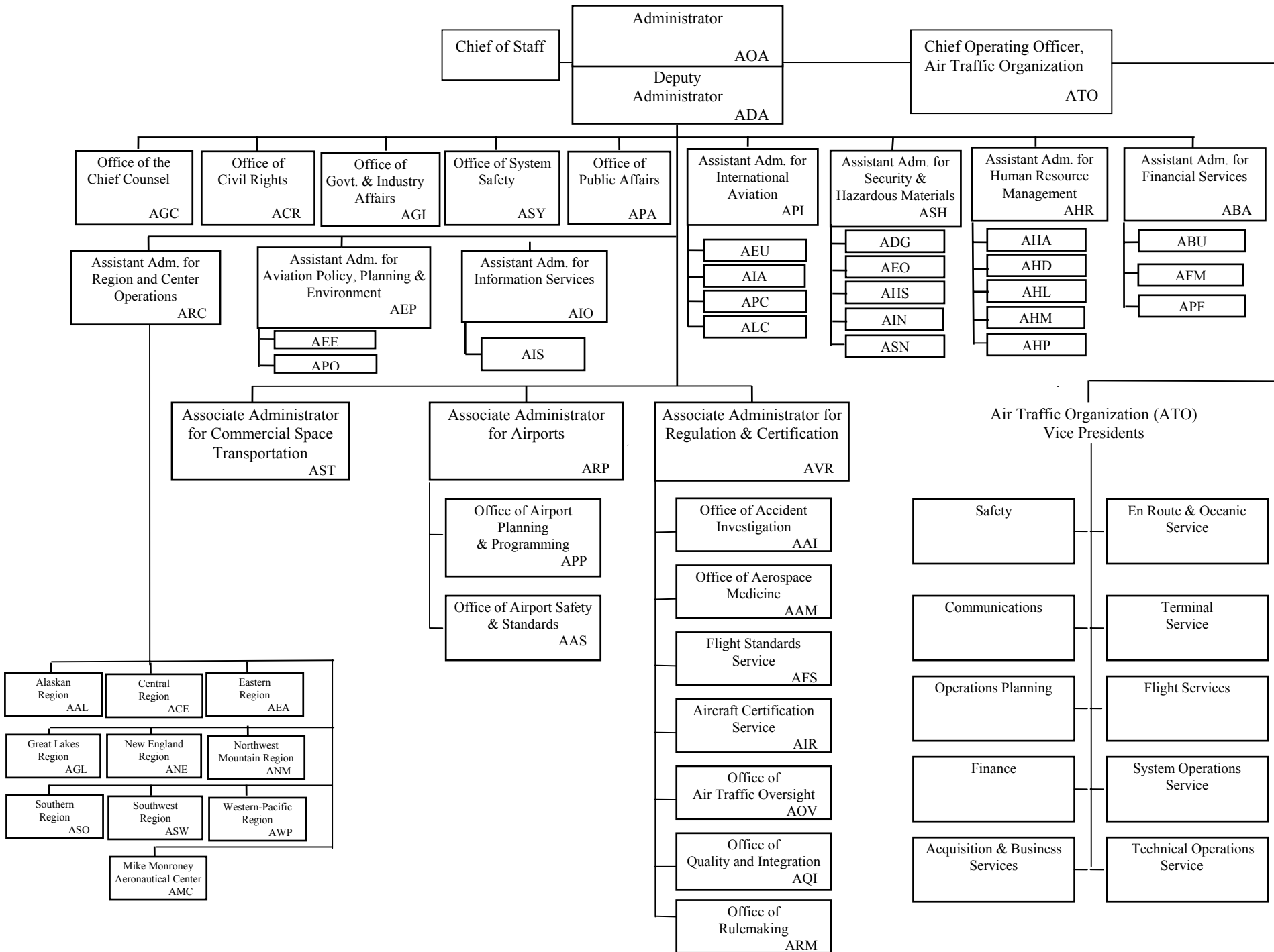
(launch dates are subject to change)

Payload (Operator)/ Description	Launch Company/ Vehicle	Launch Date/ Launch Site
<i>Estrela do Sul/Telstar 14 (Brazil)</i> Comm. Satellite	Sea Launch Zenit 3SL	January 10 Pacific Ocean Platform
<i>AMC 10 (U.S.)</i> Comm. Satellite	Lockheed Martin (International Launch Services, ILS) Atlas IIIAS	February 5 Cape Canaveral Air Force Station, FL
<i>MBSat (Japan)</i> Comm. Satellite	Lockheed Martin (ILS) Atlas IIIA	March 13 Cape Canaveral Air Force Station, FL
<i>ROCSAT 2 (Taiwan)</i> Remote Sensing Satellite	Orbital Sciences Corp. Taurus XL	March Vandenberg Air Force Base, CA
<i>SuperBird 6 (Japan)</i> Comm. Satellite	Lockheed Martin (ILS) Atlas IIAS	April Cape Canaveral Air Force Station, FL
<i>DirecTV 7S (U.S.)</i> Comm. Satellite	Sea Launch Zenit 3SL	May Pacific Ocean Platform
<i>AMC 11 (U.S.)</i> Comm. Satellite	Lockheed Martin (ILS) Atlas IIAS	May Cape Canaveral Air Force Station, FL
<i>Telstar 18/ApStar V (China)</i> Comm. Satellite	Sea Launch Zenit 3SL	4 th Quarter Pacific Ocean Platform
<i>INMARSAT 4 F1 (multinational)</i> Comm. Satellite	Lockheed Martin (ILS) Atlas V	4 th Quarter Cape Canaveral Air Force Station, FL
<i>TBD</i>	Sea Launch Zenit 3SL	4 th Quarter Pacific Ocean Platform
suborbital launch (U.S.)		2004
suborbital launch (U.S.)		2004

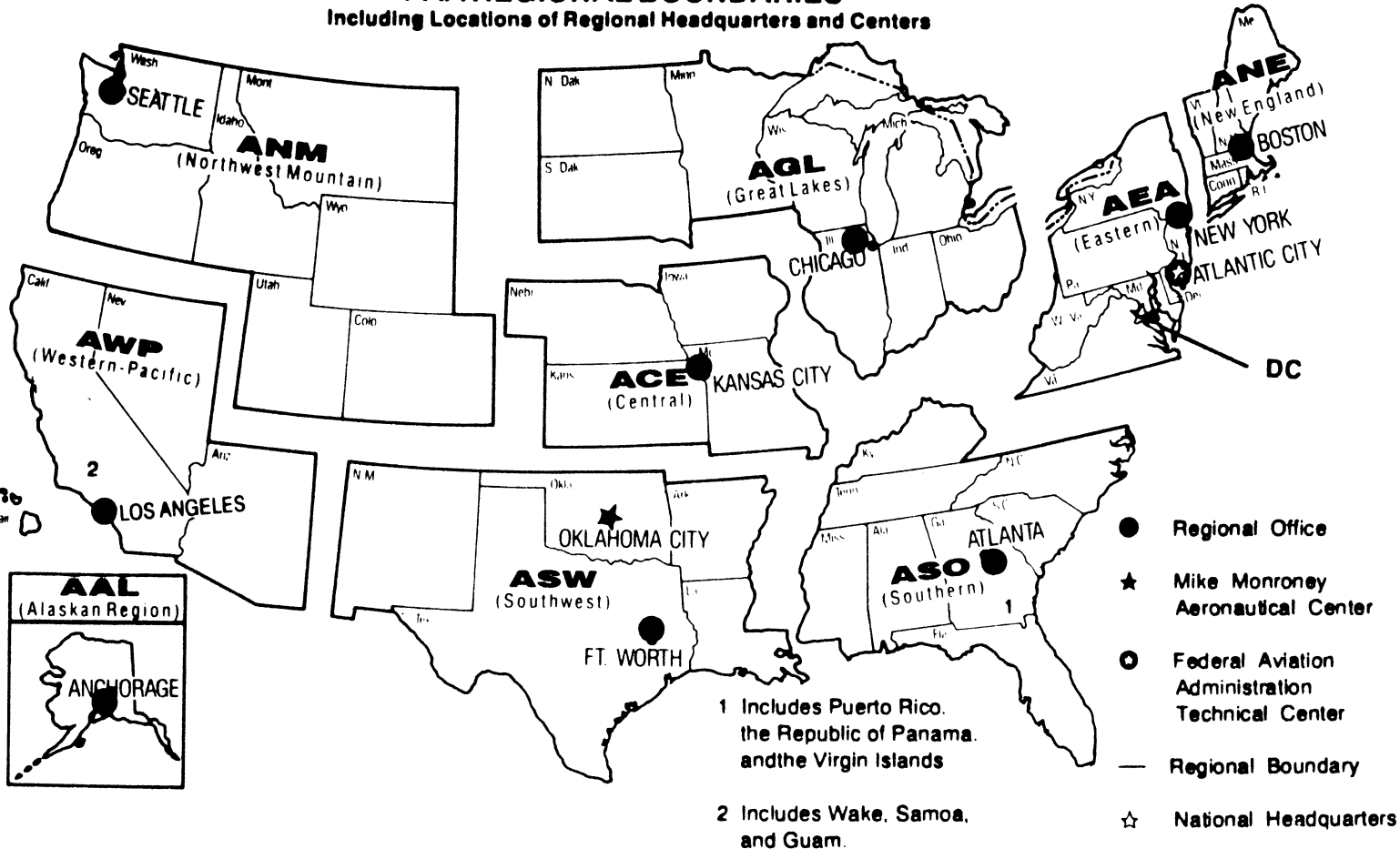
As of: 3/15/04

Source: AST
(202) 267-7989

FEDERAL AVIATION ADMINISTRATION



**U.S. DEPARTMENT OF TRANSPORTATION
Federal Aviation Administration
FAA REGIONAL BOUNDARIES**
Including Locations of Regional Headquarters and Centers



U.S. Commercial Space Transportation Activity and AST Licensing

	CY 2001	CY 2002	CY 2003 (Projected)
Licensed Commercial Launches			
TOTAL	6	7	10
Number of Orbital Launches	5	6	10
Number of Sub-Orbital Launches	1	1	0
By Launch Vehicle Type			
Delta Family (Boeing Company)	1	2	0
Atlas Family (Lockheed Martin)	1	3	4
Pegasus (Orbital Sciences Corp.)	0	0	1
Taurus (Orbital Sciences Corp.)	1	0	1
Athena 1&2 (Lockheed Martin)	0	0	0
Zenit 3SL (KB Yuzhnoye, Ukraine)	2	1	4
other suborbital	1	1	0
By Launch Site (Federal)			
Cape Canaveral Air Station, FL	1	4	4
Vandenberg AFB, CA	2	1	2
Kwajalein Missile Range	0	0	0
By Launch Site (Commercial)			
California Spaceport	0	0	0
Florida Space Authority	0	0	0
Virginia Space Flight Center	0	0	0
Kodiak Launch Complex (Alaska)	0	0	0
International Sites/Pacific Ocean	3	2	4

Source: AST
(202) 385-4804

As of: 01/27/03

United States Commercial Space Launch Schedule, CY 2003

(launch dates are subject to change)

Payload (Operator)/ Description	Launch Company/ Vehicle	Launch Date/ Launch Site
<i>Hellas-Sat (Greece)</i> Comm. Satellite	Lockheed Martin (International Launch Services, ILS) Atlas V	March Cape Canaveral Air Force Station, FL
<i>Unannounced</i> Comm. Satellite	Sea Launch Zenit 3SL	March Pacific Ocean Platform
<i>Asia Sat 4 (China)</i> Comm. Satellite	Lockheed Martin (International Launch Services, ILS) Atlas IIIB	April Cape Canaveral Air Force Station, FL
<i>Orb View 3 (U.S.)</i> Remote Sensing Satellite	Orbital Sciences Corp. Pegasus XL	April Vandenberg Air Force Base, CA
<i>Rainbow (U.S.)</i> Comm. Satellite	Lockheed Martin (ILS) Atlas V	May Cape Canaveral Air Force Station, FL
<i>Unannounced</i>	Sea Launch Zenit 3SL	2 nd Quarter Pacific Ocean Platform
<i>Thuraya (United Arab Emirates)</i> Comm. Satellite	Sea Launch Zenit 3SL	3 rd Quarter Pacific Ocean Platform
<i>SuperBird 6 (Japan)</i> Comm. Satellite	Lockheed Martin (ILS) Atlas IIAS	September Cape Canaveral Air Force Station, FL
<i>ROCSAT 2 (TAIWAN)</i> Remote Sensing	Orbital Sciences Taurus XL	October Vandenberg Air Force Base, CA
<i>Unannounced</i> Remote Sensing	Sea Launch Zenit 3SL	4 th Quarter Pacific Ocean Platform

As of: 1/24/03

Source: AST
(202) 267-7989

FAA Resources

FAA Employment (Permanent Employees)¹

	1st QTR FY04	FY 03
Line of Business		
Air Traffic Organization (ATO)*.....	37,371	35,801
Air Traffic Services (ATS)*.....	*	35,801
Regulation and Certification (AVR).....	6,599	6,354
Airports (ARP).....	478	461
Research and Acquisitions (ARA)*.....	*	1,722
Comm. Space Transportation (AST)....	58	56
Staff Offices*.....	4,051	4,105
*	48,557	48,503
Region/Center/Headquarters (included in above total)		
Aeronautical Center.....	1,583	1,578
Alaskan.....	1,376	1,385
Central.....	2,449	2,519
Eastern.....	5,312	5,359
Great Lakes.....	6,415	6,442
New England.....	1,928	1,938
Northwest Mountain.....	4,130	4,119
Southern.....	7,528	7,585
Southwest.....	5,362	5,293
Western-Pacific.....	5,336	5,388
Washington Headquarters (only) ²	4,247	4,055
Washington Headquarters Field ³	1,995	1,953
Technical Center.....	896	885

¹ Full time permanent and part time permanent employees only.

² Washington Headquarters employees physically located in FOB-10A and surrounding areas (i.e. Portals, Market Square, etc.).

³ Washington Headquarters employees physically located in the Field (i.e. Technical Center, Aeronautical Center, etc.)

* ATO became effective October 2003. ATO includes ATS, ARA and AOZ under Staff Offices.

As of: 12/31/03

Source: APF-100
(202) 267-9946

FAA Percent Minority & Female Employment¹

Lines of Business/Region/Center/Headquarters	% Minority		%Female	
	1stQtr FY04	FY 03	1stQtr FY04	FY 03
Air Traffic Organization (ATO)*	18.2	*	20.2	*
AirTraffic Services (ATS)*	*	17.5	*	19.3
Regulation and Certification (AVR).....	18.9	18.9	28.1	28.4
Airports (ARP).....	26.8	24.9	39.3	39.5
Research and Acquisitions (ARA)*.....	*	31.0	*	38.1
Commercial Space Transportation (AST).....	44.8	46.4	31.0	30.4
Staff Offices*	32.3	32.2	53.4	52.9
Total.....	19.6	19.5	24.1	24.2
Aeronautical Center.....	23.5	23.5	44.0	43.6
Alaskan.....	13.5	13.8	23.4	23.5
Central.....	14.8	14.7	25.3	25.1
Eastern.....	15.3	15.3	19.4	19.4
Great Lakes.....	11.6	11.4	20.4	20.4
New England.....	7.2	7.4	21.2	21.3
Northwest Mountain.....	12.9	12.9	22.4	22.4
Southern.....	21.2	21.2	19.6	19.6
Southwest.....	22.2	22.3	20.0	20.3
Western-Pacific.....	29.4	29.6	21.1	21.2
Washington Headquarters (only) ²	33.5	33.5	42.7	43.9
Washington Headquarters Field ³	19.5	19.2	32.5	32.1
Technical Center.....	22.4	21.8	31.9	32.0

¹ Full-time permanent, and part-time permanent employees only (FTE 1111 & 1132).

² Washington Headquarters employees physically located in FOB-10A and surrounding areas (i.e. Portals, Market Square, etc.).

³ Washington Headquarters employees physically located in the Field (i.e. Technical Center, Aeronautical Center, etc.).

* ATO became effective October 2003. ATO includes ATS, ARA and AOZ under Staff Offices.

Major Work Force Employment

	Employment ¹				
	2nd QTR FY04	FY03	FY02	%Chg. FY04 - FY03	Actual Change
Air Traffic Controller Work Force ATCS ² (bargaining unit employees)	17,298	17,598	17,501	-1.7%	-300
Traffic Management Coordinators ² Operations Supervisors ²	15,140	15,386	15,238	-1.6%	-246
Flight Service Stations	625	635	654	-1.6%	-10
Field Maintenance (210-211 only)	1,533	1,577	1,609	-2.8%	-44
Airports Work Force	2,670	2,749	2,864	-2.9%	-79
Aircraft Certification	7,350	7,770	7,901	-5.4%	-420
Flight Standards Work Force	470	467	454	0.6%	3
	1,789	1,791	1,958	-0.1%	-2
	1,141	1,178	1,123	-3.1%	-37
	4,586	4,628	4,533	-0.9%	-42

¹ Full time permanent appointments (operations direct).

² Included in Air Traffic Controller Work Force Total.

Note: Traffic Management Supervisors (TMS) are no longer included in Controller Work Force.

Research & Acquisition (ARA) Work Force removed, organization restructured under the Air Traffic Organization (ATO).

As of: 3/31/04

Source: APF-100

(202) 267-9946

Labor Relations

	BARGAINING UNITS	LABOR AGREEMENTS	EMPLOYEES REPRESENTED
Unions.....	45	23	38,934
AFGE.....	10	7	1,530
AFSCME (HQ).....	5	0	2,064
LIUNA.....	1	1	171
NAATS.....	1	1	2,257
NAGE.....	3	3	327
NATCA (AT).....	4	3	16,756
NATCA (AF).....	2	1	1,468
NATCA (Other).....	8	0	1,613
NFFE.....	3	2	793
PAACE.....	3	2	402
PASS (AF/AEA).....	1	1	7,619
PASS (AVN).....	1	1	318
PASS (AFS).....	2	1	3,454
PASS (AIR).....	1	0	162

AFGE	--American Federation of Government Employees
AFSCME	--American Federation of State, County, and Municipal Employees
LIUNA	--Laborer's International Union of North America
NAATS	--National Association of Air Traffic Specialists
NAGE	--National Association of Government Employees
NACTA	--National Air Traffic Controllers Association
NFFE	--National Federation of Federal Employees
PAACE	--Professional Association of Aeronautical Center Employees
PASS	--Professional Airway System Specialists

As of: 03/16/04

Source: AHL-200
(202) 267-3375

FAA Finances

(In Millions of Dollars)

	FY 2003 ¹	FY 2004 ²	FY 2005 ³
	Actual	Est.	Est.
Budget Authority (BA)			
Grants-In-Aid (Obligation Lim/Approp).....	3,378	3,380	3,500
Other Budget Authority.....	0	2	0
Research, Engineering, & Development.....	147	119	117
Facilities and Equipment.....	2,942	2,863	2,500
Operations.....	7,019	7,479	7,849
Midway Island	4	0	0
Aviation User Fees.....	20	0	6
Total.....	13,510	13,843	13,972
Obligations Incurred--Operations			
Appropriation by Line of Business			
Air Traffic Services (ATS).....	5,643	6,001	0
Research and Acquisitions (ARA).....	204	216	0
Air Traffic Organization (ATO).....	0	0	6,522
Regulation and Certification (AVR).....	832	871	905
Commercial Space Transportation (AST).....	11	12	12
Staff Offices (SO).....	82	181	410
Regions/Center Operations.....	79	86	0
Human Resources.....	68	75	0
Financial Services.....	48	49	0
Information Services/CIO.....	29	29	0
Emergency Response Fund.....	25	9	0
Total.....	7,021	7,529	7,849
Airport Grant Obligations (NET)			
Primary Airports & Cargo.....	1,060	1,019	1,024
States/Territories/Insular/Alaska Supp.....	680	680	707
Carryover Entitlements.....	355	336	336
Discretionary Fund.....	814	879	983
Small Airport Fund.....	386	380	380
Total.....	3,295	3,294	3,430
Total FAA Outlays.....	12,561	14,015	14,266
Trust Fund Receipts from Excise Taxes			
Passenger Ticket Tax.....	4,223	4,933	5,480
Passenger Flight Segment Tax.....	1,783	1,943	2,103
Waybill Tax.....	422	442	466
Fuel Tax	711	770	820
International Departure/Arrival Tax.....	1,331	1,435	1,570
Rural Airports Tax.....	67	75	82
Frequent Flyer Tax.....	147	153	156
Interest on Investment.....	591	620	412
Offsetting Collections.....	97	152	152
Total.....	9,372	10,523	11,241

Numbers may not add due to rounding. ¹ FY03 reflects a rescission of 0.65 percent; Operations includes \$3.5M supplemental for Midway Island. F&E BA excludes \$20M unobligated balance rescission. ² FY04 reflects a rescission 0.59 percent. F&E BA excludes \$30M unobligated balance rescission. Other BA shown is a direct appropriation for the extension of a runway at Fort Worth Alliance Airport. Operations BA reflects \$7.3M Working Capital Fund (WCF) rescission. ³ FY05 Operations BA includes \$2M for Bureau of Transportation Statistics. The Operations obligations by LOB reflect a proposed budget structure change -- ATS/ARA are combined into the new ATO, AVR/AST remain the same and all other LOBs are consolidated under SO.

Source: ABU-100
(202) 267-9070

FAA NAS Operational Facilities

(As of December 31)

	2003	2002	2001
NAS Operational Facilities¹	40,997	40,746	40,910
Communications.....	14,277	14,194	14,145
Automation.....	4,057	4,049	4,000
Environment.....	6,505	6,494	6,552
Navigation.....	11,131	11,104	11,210
Surveillance.....	1,894	1,871	1,833
Weather.....	3,133	3,034	3,170
Air Traffic Control Facilities²			
Air Route Traffic Control Center.....	21	21	21
Airport Traffic Control Tower.....	449	449	448
Flight Service ³	76	76	76
Flight Service Stations.....	16	16	16
Automated Flight Service Stations...	60	60	60

¹ Excludes non-federal facilities and foreign facilities.

² Included in NAS operational facilities.

³ Flight Service include Flight Service Stations and Automated Flight Service Stations

As of: 12/31/03

Source: AOP-200
(202) 267-3628

FAA Officials

Washington Headquarters

Routing Symbol	Officials
AOA	Administrator Marion C. Blakey, 202-267-3111 David Mandell, Chief of Staff, 202-267-3111 Louise E. Maillett, Senior Counsel to AOA, 202-267-7417
ADA	Deputy Administrator Bobby Sturgell, 202-267-8111 Shirley S. Miller, Senior Advisor to ADA, 202-267-8111
ATO*	Chief Operating Officer, Air Traffic Organization Russell G. Chew, 202-493-5602 Acquisition & Business Service Vice President, Dennis DeGaetano, 202-267-7222 Communications Services Vice President, Sandra M. Sanchez, 202-493-5258 Flight Services Vice President, James H. Washington, 202-385-7500 En Route & Oceanic Services Vice President, Charles E. Keegan, 202-267-7222 Finance Services Vice President, Eugene D. Juba, 202-267-3022 Operations Planning Services Vice President, Steven J. Brown, 202-267-7111 System Operations Services Vice President, Linda M. Schuessler, 202-267-8558 Safety Services Vice President, James P. Schear, 202-493-5882 Terminal Services Vice President, David B. Johnson, 202-267-3666 Technical Operations Services Vice President, Steven B. Zaidman, 202-267-8181
ABA*	Assistant Administrator for Financial Services Ramesh K. Punwani, CFO, 202-267-9105 Deputy, John F. Hennigan, 202-267-8928
ABU	<i>Office of Budget</i> <i>Director, Alex Keenan, 202-267-8010</i>
AFM	<i>Office of Financial Management</i> <i>Director, Vacant, 202-267-3018</i>
APF	<i>Office of Cost and Performance Management</i> <i>Director, Tim Lawler, 202-267-7140</i>
ACR	Assistant Administrator for Civil Rights Fanny Rivera, 202-267-3254 Deputy, Barbara A. Edwards, 202-267-3264
AEP*	Asst. Admin. for Aviation Policy, Planning & Environment Sharon L. Pinkerton, 202-267-3927 Deputy, Nancy LoBue, 202-267-7954

* Updated this issue
As of: 06/21/04

Source: APF-100
(202) 267-9946

FAA Officials

Washington Headquarters--(Cont)

Routing Symbol	Officials
AEE	<i>Office of Environment and Energy</i> <i>Director, Carl Burleson, 202-267-3576</i>
APO*	<i>Office of Aviation Policy and Plans</i> <i>Director, Nan Shellabarger, 202-267-3274</i>
AGC	Chief Counsel Andrew B. Steinberg, 202-267-3222 Deputy, James W. Whitlow, 202-267-3773
AGI*	Asst. Administrator for Government & Industry Affairs David Balloff, 202-267-3277 Deputy, Daniel J. Hickey, 202-267-8211
AHR	Asst. Administrator for Human Resource Management Ventris C. Gibson, 202-267-3456 Deputy, Mary Ellen Dix, 202-267-3850 Dpty. for Labor Relations, Raymond B. Thoman, 202-267-3850
AHA	<i>Office of the Accountability Board</i> <i>Director, Maria Fernandez-Greczmiel, 202-267-3065</i>
AHD	<i>Office of Corporate, Learning & Development</i> <i>Director Darlene Freeman, 202-267-9041</i>
AHL	<i>Office of Labor & Employee Relations</i> <i>Director, Melvin Harris, 202-267-3979</i>
AHM	<i>Center for Management Development</i> <i>Director, Barbara J. Smith, 386-446-7136</i>
AHP	<i>Office of Personnel</i> <i>Director, Vacnat, 202-267-3979</i>
AIO	Assistant Administrator for Information Services Daniel J. Mehan, CIO, 202-493-4570 Deputy, Arthur Pyster, 202-493-4570
AIS	<i>Office of Information Systems Security</i> <i>Director, Michael F. Brown, 202-267-7104</i>
APA	Assistant Administrator for Public Affairs Greg Martin, 202-267-3883 Deputy, Laura Brown, 202-267-3883
API*	Asst. Administrator for International Aviation Douglas E. Lavin, 202-385-8900 Deputy, Vacant, 202-267-3033
AIA*	<i>Office of International Aviation</i> <i>Director, John R. Hancock (Actg.), 202-385-8857</i>
ARC	Assistant Administrator for Region/Center Operations Ruth Leverenz, 202-267-7369
ASH	Asst. Administrator for Security & Hazardous Materials Lynne A. Osmus, 202-267-7211 Deputy, Eugene Ross Hamory, 202-267-7211
ADG	<i>Office of Hazardous Materials</i> <i>Director, William Wilkening, Jr., 202-267-9864</i>
AEO*	<i>Office of Emergency Operations and Communications</i> <i>Director, Claudio Manno, 202-267-8979</i>

FAA Officials

Washington Headquarters--(Cont.)

Routing Symbol	Officials
AHS	<i>Office of Operations</i> <i>Director, Willie Gripper, 202-267-7211</i>
AIN	<i>Office of Internal Security</i> <i>Director, Thomas E. Ryan, 202-366-1146</i>
ASN	<i>Office of Investigations</i> <i>Director, Steven G. Keenley, 202-366-1246</i>
ASY	Assistant Administrator for System Safety Christopher A. Hart, 202-267-3611 <i>Deputy, Daniel C. Hedges, 202-267-3611</i>
ARP	Associate Administrator for Airports Woodie Woodward, 202-267-9471 <i>Deputy, Catherine M. Lang, 202-267-8738</i>
AAS	<i>Office of Airport Safety and Standards</i> <i>Director, David L. Bennett, 202-267-3053</i>
APP	<i>Office of Airport Planning & Programming</i> <i>Director, Dennis E. Roberts, 202-267-8775</i>
AST	Assoc. Adm. for Commercial Space Transportation Patricia Grace Smith, 202-267-7793 <i>Deputy, Dr. George C. Nield, 202-267-7848</i>
AVR	Associate Administrator for Regulation & Certification Nicholas A. Sabatini, 202-267-3131 <i>Deputy, Peggy Gilligan, 202-267-7804</i>
AAI	<i>Office of Accident Investigation</i> <i>Director, Steven B. Wallace, 202-267-9612</i>
AAM	<i>Office of Aviation Medicine</i> <i>Director, Jon L. Jordon, MD, 202-267-3535</i>
AFS	<i>Flight Standards Service</i> <i>Director, James Ballough, 202-267-8237</i>
AIR	<i>Aircraft Certification Service</i> <i>Director, John J. Hickey, 202-267-8235</i>
AOV*	<i>Office of Air Traffic Oversight</i> <i>Director, J. David Canoles, 202-267-7764</i>
AQI*	<i>Quality and Integration</i> <i>Director, Vi Lipski, 202-493-5860</i>
ARM	<i>Office of Rulemaking</i> <i>Director, Anthony F. Fazio, 202-267-9677</i>

Duty Officer

(202) 267-3333

FAA Officials

Major Field Organizations

Routing Symbol	Officials
AAL	Alaskan Region, Regional Administrator Patrick N. Poe, 907-271-5645 222 West 7th Avenue, Box 14 Anchorage, Alaska 99513-7587 Duty Officer, 907-271-5936
ACE	Central Region, Regional Administrator Christopher Blum, 816-329-3050 901 Locust Kansas City, Missouri 64106 Duty Officer, 816-329-3000
ACT	William J. Hughes Technical Center, Director Anne Harlan, Ph.D., 609-485-6641 Atlantic City International Airport New Jersey 08405 Duty Officer, 609-485-6482
AEA	Eastern Region, Regional Administrator Arlene B. Feldman, 718-553-3000 1 Aviation Plaza 159-30 Rockaway Blvd. Jamaica, New York 11434-4809 Duty Officer, 718-553-3100
AGL	Great Lakes Region, Regional Administrator Cecelia Hunziker, 847-294-7294 2300 East Devon Avenue Des Plaines, Illinois 60018 Duty Officer, 847-294-8400
AMC	Mike Monroney Aeronautical Center, Director Lindy Ritz, 405-954-4521 6500 South MacArthur Oklahoma City, Oklahoma 73125 Duty Officer, 405-954-3583

FAA Officials

Major Field Organizations--(Cont.)

Routing Symbol	Officials
ANE	New England Region, Regional Administrator Amy Lind Corbett, 781-238-7020 12 New England Executive Park Burlington, Massachusetts 01803 Duty Officer, 781-238-7001
ANM	Northwest Mountain Region, Regional Administrator Douglas R. Murphy, 425-227-2001 1601 Lind Avenue, S.W. Renton, Washington 98055-4056 Duty Officer, 425-227-2000
ASO	Southern Region, Regional Administrator Carolyn Blum, 404-305-5000 1701 Columbia Avenue College Park, Georgia 30337 Duty Officer, 404-305-5180
ASW*	Southwest Region, Regional Administrator Ava L. Wilkerson, 817-222-5001 2601 Meacham Blvd. Ft. Worth, Texas 76137-4298 Duty Officer, 817-222-5006
AWP	Western-Pacific Region, Regional Administrator William C. Withycombe, 310-725-3550 15000 Aviation Boulevard Hawthorne, California 90261 Duty Officer, 310-725-3300

FAA Officials

International Area Offices

Routing Symbol	Officials
AEU	Europe, Africa, & Middle East Area Office, Director Paul Feldman, 011-322-508-2700 American Embassy, Brussels PSC 82 Box 002 APO AE 09724-1011
ALC	Latin America & Caribbean Area Office, Director Joaquin Archilla, 305-716-3300 8600 NW 36th Street Miami, FL 33166
APC	Asia-Pacific Area Office, Director Elizabeth E. Erickson, 011-65-6540-4114 American Embassy 27 Napier Road Singapore 258508

FEDERAL AVIATION ADMINISTRATION

FLIGHT PLAN 2004-2008

INCREASED SAFETY

Goal: *Achieve the lowest possible accident rate and constantly improve safety.*

Objectives:

1. Reduce the commercial airline fatal accident rate.
2. Reduce the number of fatal accidents in general aviation.
3. Reduce accidents in Alaska.
4. Reduce the risk of runway incursions.
5. Reduce cabin injuries caused by turbulence.
6. Measure the safety of the United States civil aviation system with a composite index.
7. Ensure the safety of commercial space launches.
8. Enhance the safety of FAA's air traffic systems.

Performance Targets:

Obj. 1 Reduce the airline fatal accident rate by 80% from the 1994-1996 baseline by FY 2007 and maintain this low rate in FY 2008.

Obj.2 By FY 2008, reduce the number of general aviation nonscheduled Part 135 fatal accidents to more than 325 (from 385, which represents the average number of fatal accidents for the baseline period of 1996-1998).

Obj. 3 Reduce accidents in Alaska for general aviation and all Part 135 operations by 20% by FY 2008 (from 2000-2002) average of 130 accidents per year to no more than 104 accidents per year).

Obj. 4 Reduce the number of most serious runway incursions (Categories A and B) at towered airports by at least 48% by FY 2008 (from the 2000-2002) baseline average of 52 per year to no more than 27 per year).

As of 10/01/03

Source: APO-120
(202) 267-3220

INCREASED SAFETY Performance Targets (Continued)

Obj. 5 Reduce serious injuries from turbulence accidents by 33% by FY 2008 (from the FY 1996-2000 average of 18 serious injuries per year to no more than 12).

Obj. 6 By FY 2006 implement a single, comprehensive index that provides a meaningful measure of the safety performance of the U.S. civil aviation system.

Obj. 7 No fatalities or serious injuries to the uninvolved public during commercial space launch or reentry activities.

Obj. 7 No significant damage to property that is not associated with the flight during commercial space launch or reentry activities.

Obj. 8 Apply safety risk management to all significant changes in the NAS.

Obj. 8 Reduce the number of most serious air traffic control operational errors (Categories A and B) by 15%, to no more than 563 by FY 2008.

GREATER CAPACITY

Goal: *Work with local governments and airspace users to provide capacity in the United States airspace system that meets projected demand in an environmentally sound manner.*

Objectives:

1. Increase airport capacity to meet projected demand.
2. Make air traffic flow over land and sea more efficient.
3. Increase or improve airspace capacity in the eight major metropolitan areas and corridors that most affect total system delay: New York, Philadelphia, Boston, Chicago, Washington/Baltimore, Atlanta, Los Angeles Basin, and San Francisco.
4. Increase on-time performance of scheduled carriers.
5. Address environmental issues associated with capacity enhancements.

Performance Targets:

Obj. 1 Achieve an airport arrival efficiency rate of 96% at the 35 OEP airports by FY 2008.

Obj. 1 Increase the Airport Arrival Capacity at the 35 OEP airports from 50,550 arrivals per day the 2000-2002 baseline, to at least 53,600 per day by FY 2008.

Obj. 1 Open as many as nine new runways, while increasing the annual service volume (ASV) of the 35 OEP airports by at least 1% annually, measured as a five-year moving average, through FY 2008.

Obj. 1 Sustain operational availability at 99% for the reportable facilities that support the 35 OEP airports.

Obj. 2 Maintain average en-route travel times among the eight major metropolitan areas.

GREATER CAPACITY Performance Targets (Continued)

Obj. 2 Beginning in FY 2005, increase to 80% the number of oceanic en-route altitude change requests that are granted through the end of FY 2008.

Obj. 3 Achieve an increase in the Airport Arrival Capacity for the eight major metropolitan areas from 21,290 arrivals per day from the 2000-2002 baseline to at least 22,000 per day by FY 2008.

Obj. 4 Through FY 2008, increase the percentage of all flights arriving within 15 minutes of schedule at the 35 OEP airports by 7%, as measured from the three-year FY 2002 baseline

Obj. 5 Reduce the number of people exposed to significant noise through FY 2008, as measured by a three-year moving average, from the three-year average for calendar year 2000-2002.

Obj. 5 Improve aviation fuel efficiency per revenue plane-mile by 1% per year through DY 2008, as measured by a three-year moving average, from the three-year average for calendar year 2000-2002.

INTERNATIONAL LEADERSHIP

Goal: increase the safety and capacity of the global civil aerospace system in an environmentally sound manner.

Objectives:

1. Promote improved safety and regulatory oversight in cooperation with bilateral, regional, and multilateral aviation partners.
2. Promote seamless operations around the globe in cooperation with bilateral, regional, and multilateral aviation partners.

Performance Targets:

Obj. 1 Provide new or expanded technical assistance and training to 30 key countries or regional authorities.

Obj. 1 Conclude new bilateral agreements recognizing safety certification and approval systems with ten key countries or regional authorities.

Obj. 1 Secure a 100% increase, over FY 2003 levels, in intellectual and financial assistance for international aviation activities from the United States and international government organizations, multilateral bank, and industry.

Obj. 1 Support creating at least four new regional aviation authorities or organizations capable of meeting globally accepted safety and efficiency standards.

Obj. 2 Ensure the United States, ICAO, and other international partners implement new techniques and key operational procedures in a consistent and timely manner.

Obj. 2 Implement RVSM in the North American Region by January 2005.

Obj. 2 Ensure that international environmental standards, recommended practices, and guidance material adopted by ICAO are globally and uniformly applied, reflect the best available technology, provide real environmental benefit, and are economically sound.

ORGANIZATIONAL EXCELLENCE

GOAL: Ensure the success of the FAA's mission through stronger leadership, a better trained workforce, enhanced cost-control measures, and improved decision-making based on reliable data.

Objectives:

1. Make the organization more effective with stronger leadership, increased commitment of individual workers to fulfill organization-wide goals, and a better prepared, better trained, diverse workforce.
2. Control costs while delivering quality customer service.
3. Make decisions based on reliable data to improve our overall performance and customer satisfaction.

Performance Targets:

Obj.1 Increase Employee Attitude Survey scores in the areas of management effectiveness and accountability by at least 5%.

Obj.1 Directly relates 100% all employee performance plans to FAA strategic goals and their organization's performance plans.

Obj. 1 Reduce the time it takes to hire mission critical positions by 20% over the FY 2003 baseline.

Obj. 2 By putting cost controls in place, and having a more efficient, effective workforce, the agency expects to fund at least 75% of the currently unfunded portion of the Flight plan.

Obj. 2 Complete the closeout of 100% (FY 2001 baseline) of cost reimbursable contracts by end of FY 2004 and maintain timely closure of future contracts.

Obj. 3 Make sure 80% of critical acquisition programs are both on schedule and within 10% of budget.

Obj. 3 Achieve 90% of all performance targets in the Flight Plan.

ORGANIZATIONAL EXCELLENCE Performance Targets (Continued)

Obj. 3 Increase agency scores on the American Customer Satisfaction Index.

Obj. 3 Achieve 90% of the milestones for the agency information security plan by 2008.



FAA VISION

To provide the safest, most efficient and responsive aerospace system in the world, and to be the best Federal employer, continuously improving service to customers and employees.

FAA Mission

FAA provides a safe, secure, and efficient global aerospace system that contributes to national security and the promotion of US aerospace safety.

As the leading authority in the international aerospace community, FAA is responsive to the dynamic nature of customer needs, economic conditions, and environmental concerns.

FAA VALUES

We Believe in

- ☆ Trust*
- ☆ Integrity*
- ☆ Honesty*
- ☆ Involvement*
- ☆ Teamwork*
- ☆ Diversity*
- ☆ Respect*

We Are Committed To

- ☆ Responsiveness*
- ☆ Quality*
- ☆ Timeliness*
- ☆ Fiscal Responsibility*
- ☆ Accountability*
- ☆ Communication*

We Will Achieve These Values By

- ☆ Giving people what they need, then letting them do their jobs.*
- ☆ Making timely decisions at the lowest level and respecting them.*
- ☆ Committing our best to our customers.*
- ☆ Valuing our people.*
- ☆ Being open to new ideas.*
- ☆ Speaking out for what we believe, even when it is unpopular.*
- ☆ Recognizing each person's contributions and realizing each person's full potential.*
- ☆ Collaborating across organizations.*
- ☆ Taking pride in what we do.*

2004

January

				1	2	3
4	5	6	7	8	9	10
11	12	13	14	15	16	17
18	19	20	21	22	23	24
25	26	27	28	29	30	31

March

	1	2	3	4	5	6
7	8	9	10	11	12	13
14	15	16	17	18	19	20
21	22	23	24	25	26	27
28	29	30	31			

May

						1
2	3	4	5	6	7	8
9	10	11	12	13	14	15
16	17	18	19	20	21	22
23	24	25	26	27	28	29
30	31					

July

				1	2	3
4	5	6	7	8	9	10
11	12	13	14	15	16	17
18	19	20	21	22	23	24
25	26	27	28	29	30	31

September

			1	2	3	4
5	6	7	8	9	10	11
12	13	14	15	16	17	18
19	20	21	22	23	24	25
26	27	28	29	30		

November

	1	2	3	4	5	6
7	8	9	10	11	12	13
14	15	16	17	18	19	20
21	22	23	24	25	26	27
28	29	30				

February

1	2	3	4	5	6	7
8	9	10	11	12	13	14
15	16	17	18	19	20	21
22	23	24	25	26	27	28
29						

April

				1	2	3
4	5	6	7	8	9	10
11	12	13	14	15	16	17
18	19	20	21	22	23	24
25	26	27	28	29	30	

June

		1	2	3	4	5
6	7	8	9	10	11	12
13	14	15	16	17	18	19
20	21	22	23	24	25	26
27	28	29	30			

August

1	2	3	4	5	6	7
8	9	10	11	12	13	14
15	16	17	18	19	20	21
22	23	24	25	26	27	28
29	30	31				

October

					1	2
3	4	5	6	7	8	9
10	11	12	13	14	15	16
17	18	19	20	21	22	23
24	25	26	27	28	29	30
31						

December

			1	2	3	4
5	6	7	8	9	10	11
12	13	14	15	16	17	18
19	20	21	22	23	24	25
26	27	28	29	30	31	

2005

January

						1	
2	3	4	5	6	7	8	
9	10	11	12	13	14	15	
16	17	18	19	20	21	22	
23	24	25	26	27	28	29	
30	31						

February

		1	2	3	4	5	
6	7	8	9	10	11	12	
13	14	15	16	17	18	19	
20	21	22	23	24	25	26	
27	28						

March

		1	2	3	4	5	
6	7	8	9	10	11	12	
13	14	15	16	17	18	19	
20	21	22	23	24	25	26	
27	28	29	30	31			

April

					1	2	
3	4	5	6	7	8	9	
10	11	12	13	14	15	16	
17	18	19	20	21	22	23	
24	25	26	27	28	29	30	

May

1	2	3	4	5	6	7	
8	9	10	11	12	13	14	
15	16	17	18	19	20	21	
22	23	24	25	26	27	28	
29	30	31					

June

			1	2	3	4	
5	6	7	8	9	10	11	
12	13	14	15	16	17	18	
19	20	21	22	23	24	25	
26	27	28	29	30			

July

					1	2	
3	4	5	6	7	8	9	
10	11	12	13	14	15	16	
17	18	19	20	21	22	23	
24	25	26	27	28	29	30	
31							

August

	1	2	3	4	5	6	
7	8	9	10	11	12	13	
14	15	16	17	18	19	20	
21	22	23	24	25	26	27	
28	29	30	31				

September

				1	2	3	
4	5	6	7	8	9	10	
11	12	13	14	15	16	17	
18	19	20	21	22	23	24	
25	26	27	28	29	30		

October

							1
2	3	4	5	6	7	8	
9	10	11	12	13	14	15	
16	17	18	19	20	21	22	
23	24	25	26	27	28	29	
30	31						

November

		1	2	3	4	5	
6	7	8	9	10	11	12	
13	14	15	16	17	18	19	
20	21	22	23	24	25	26	
27	28	29	30				

December

				1	2	3	
4	5	6	7	8	9	10	
11	12	13	14	15	16	17	
18	19	20	21	22	23	24	
25	26	27	28	29	30	31	