

City of Santa Monica

Greenhouse Gas Emissions Measurement and Reductions





Santa Monica - Profile

- Population:** 90,000 permanent residents
250,000 daytime population
4 million beach visitors annually
- Land Area:** 8.3 sq. mi. (13.4 sq. km.)
- Economy:** Tourism, Entertainment & Media Services, Retail Stores, Professional Offices, Creative Sector



Sustainable City Plan

The Sustainable City Plan was created to enhance our resources, prevent harm to the natural environment and human health, and benefit the social and economic well-being of the community for the sake of current and future generations



Sustainable City Plan

Proposed by City staff and the Task Force on the Environment in 1992

- Municipal operations
- Environmental sustainability
- 20 indicators

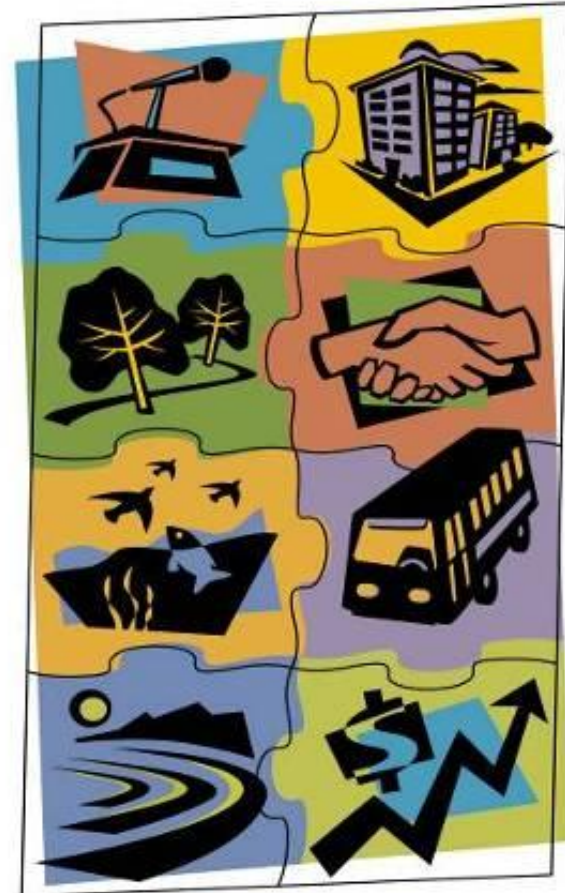
Comprehensive Update in 2001-2002

- Municipal & Community
- Environmental, Economic & Equity
- 80 indicators



Sustainable City Plan

- Long-Term City Council Adopted Policy
- Developed Separately From General Plan
- Used to Inform Update of General Plan Elements and to create specific implementation plans (CAP)
- Funded by Enterprise Funds



Sustainable City Plan – Goal Areas

Goal Areas represent commitments for both municipal operations and the community as a whole

- **Resource Conservation**
- Environmental and Public Health
- Transportation
- Economic Development
- Housing
- Open Space and Land Use
- Community Education and Civic Participation
- Human Dignity



Sustainable City Plan- Structure

Guiding Principles (10)– Statement of commitment

Goals Areas (8) – Areas of focus for both municipal operations and the community as a whole

Goals – Provide detailed vision for community sustainability in that area

Indicators – Measure progress toward goals

Indicator Targets – Help drive implementation



Example- Goal, Indicator, Target

Guiding Principle- Environmental quality, economic health and social equity are mutually dependent

Goal Area – Resource Conservation

Goals – Decrease consumption of materials, water, energy and fuels.

Indicators – Total citywide water use

Targets – Reduce overall water use by 20% by 2010





Open Space and Land Use

Goals: Develop and maintain a diverse open space system that supports the community and the natural environment / Create mixed-use urban villages



- There are 245 acres of state beach and 26 parks
- The number of trees citywide has grown 2% and diversity increased
- 25% increase in total tree canopy communitywide
- 90% of residents live within ½ mile of park/open space
 - Target is 100% within ¼ miles
 - Leads to an additional 10 acres of open space in the last 3 years





Resource Conservation

Goals: Decrease consumption of non-local, non-renewable, non-recyclable energy, water, materials and fuels / Promote renewable resource use



- **Waste diversion improved to 73%**
- **Energy use decreased by 3%**
- **19% of citywide energy is renewable**
- **183 solar projects totaling 1.4 MW**
- **Energy use declining, but higher than target levels**
 - **Leads to Community Energy Independence Initiative & Solar Santa Monica**



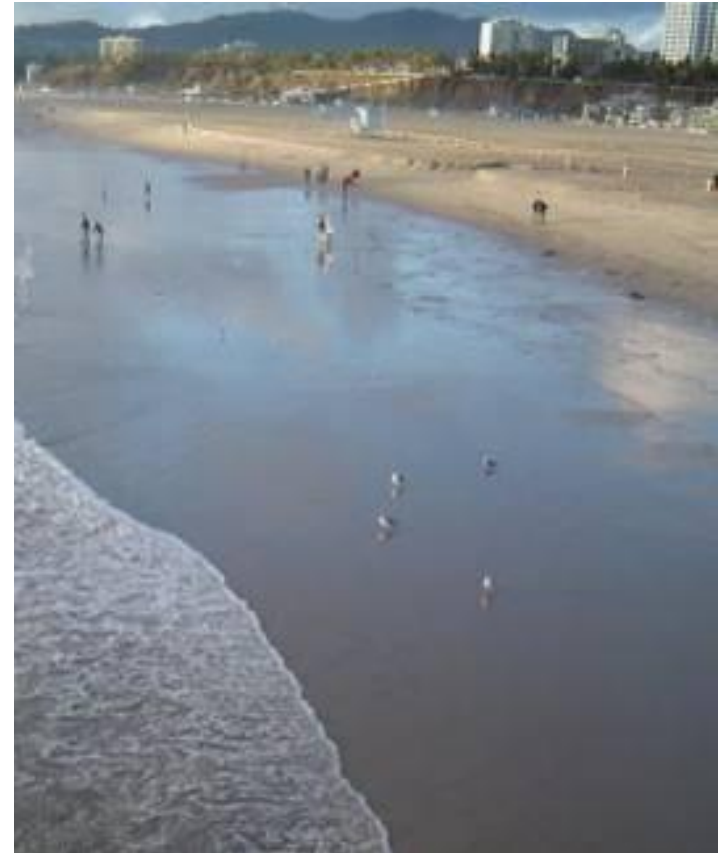
GHG Indicator and Reduction Targets

- 15% reduction below 1990 levels by 2015 for the community
- 30% reduction below 1990 levels by 2015 for municipal operations



GHG Inventory Details

- Performed in 1990, 1995, 2000 and 2007
- Utilized ICLEI model
- Sector analysis
- Municipal and community inventories
- Normalized for 1990 data



GHG Inventory Results: Community

- Reduced 7% below 1990 in 2007
- Primarily due to waste diversion, conservation, clean distributed energy and renewable energy
- 8% reduction need between 2007 and 2015 to achieve target



GHG Inventory Results: Municipal

- Reduced 13% below 1990 without BBB
- Increased 3% above 1990 with BBB
- Reductions primarily due to green power purchase, conservation, and fleet fuels
- 17% reduction needed between 2007 and 2015 to achieve target
- 33% reduction needed when including BBB



Measurement Challenges

- Baseline data vs. best available data
- BBB
 - Not initially included, but half total corporate emissions in 2007
- Sustainability vs. GHG emissions
- VMTs
 - Measurement & Reduction
- Green building
 - Enhanced performance, but increased square footage
- Per capita vs. total emissions reductions



Sustainable City Plan Measurement and Reporting

- “We ignore the things we don’t track”
- Develop an understanding of sustainability performance
- Foster a community dialogue around sustainability issues
- Create a prioritized Plan for action
- Educate and inform decision making



SUSTAINABLE SANTA MONICA



SUSTAINABLE CITY REPORT CARD

SEPTEMBER 21, 2010



Sustainable City Progress Report

Office of Sustainability and the Environment

Search [Help](#) | [Advanced Search](#)

[Home](#) [Contact - Find Us](#) [Business](#) [Local Environment](#) [Task Forces](#) [Rebates](#) [Printed Material](#) [Get Involved](#)

Sustainable City Progress Report

Sustainability Home

- Community Education & Civic Participation
- Economic Development
- Environmental & Public Health
- Housing
- Human Dignity
- Open Space & Land Use
- Resource Conservation
- Transportation

Follow us:

Sustainability Programs Contact:

Santa Monica's visionary Sustainable City Plan provides a blueprint ensuring that our city meets its current environmental, economic and social needs without compromising the ability of future generations to do the same. The plan has concrete goals and targets for tracking Santa Monica's current progress on the Plan. This website, the Sustainable City Progress Report, is the single, most up-to-date resource for residents and policy makers alike in measuring that progress. Please take a moment and measure Santa Monica's progress for yourself.

GOALS AND INDICATORS

Within each goal area you will find information on Santa Monica's sustainability **Goals, Indicators and Targets.**

www.sustainable-sm.org/scpr





“Planting tiny seeds in the small space given you can change the whole world or, at the very least, your view of it.”
-Linus Mundy

