

TransAtlas and BioPowerTools



Kristi Moriarty

September 10, 2009

Presentation Overview

- TransAtlas
- Biopower

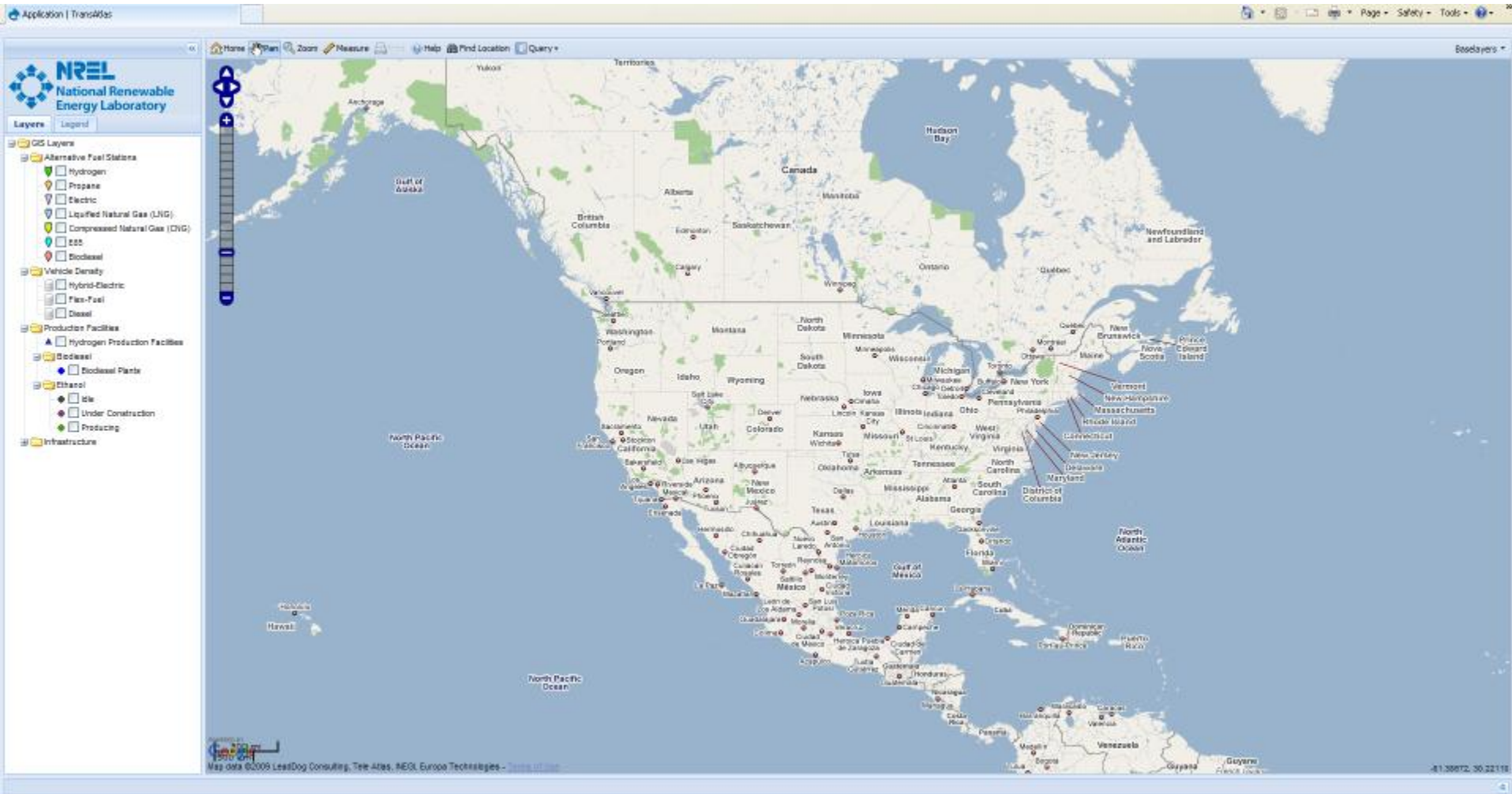
TransAtlas

- Customizable interactive map that displays U.S. alternative fuel data
- Layers
 - Alternative vehicle densities
 - Alternative fueling station locations
 - Ethanol and biodiesel plant locations
- Query tool enables users to query point or region for fueling stations, production facilities, and vehicle concentrations
- Launched May 11, 2009
- 9,371 visits and 7,697 unique visitors from 89 countries as of September 8, 2009

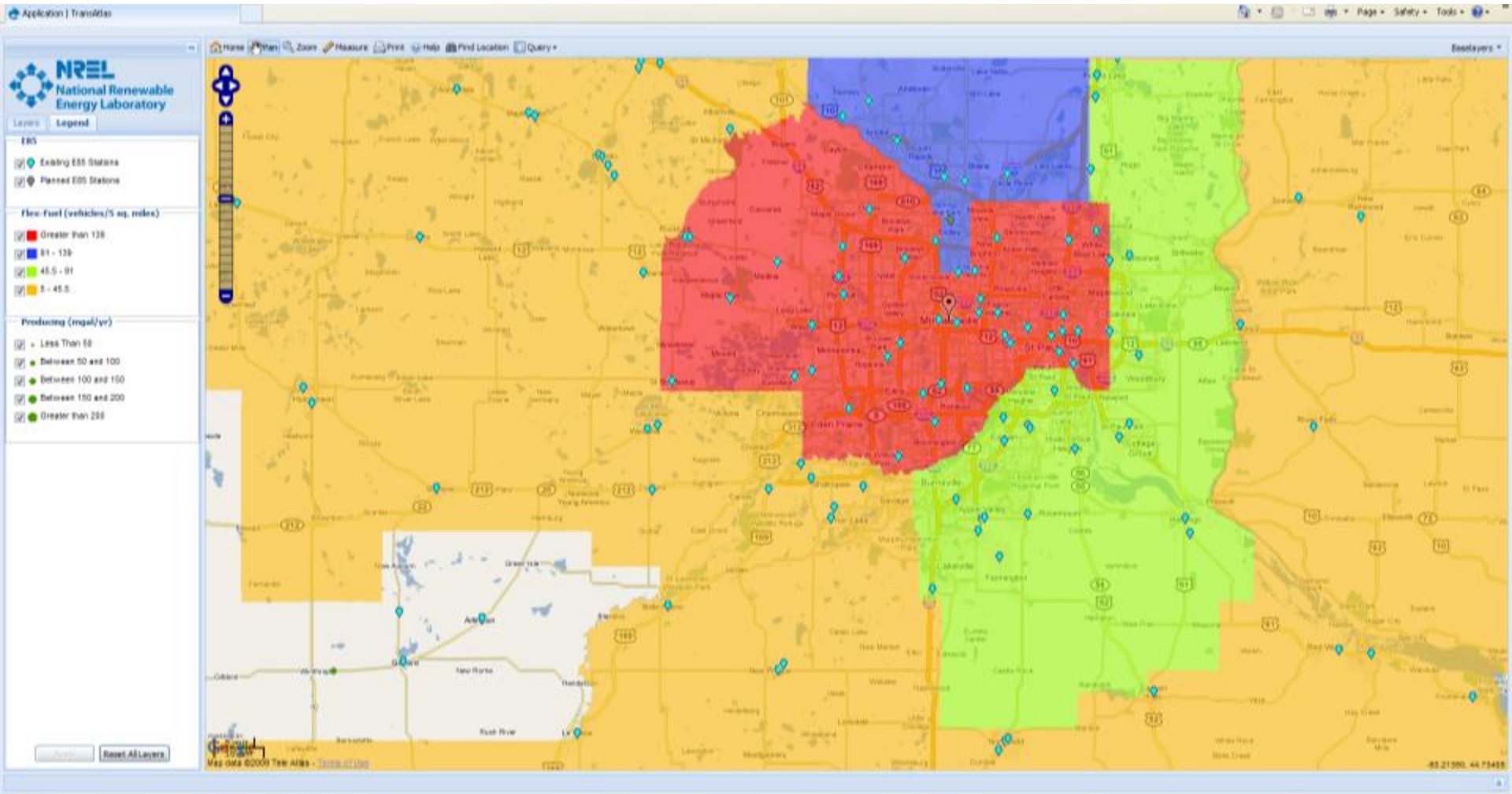
TransAtlas

<http://rpm.nrel.gov/transatlas/launch/>

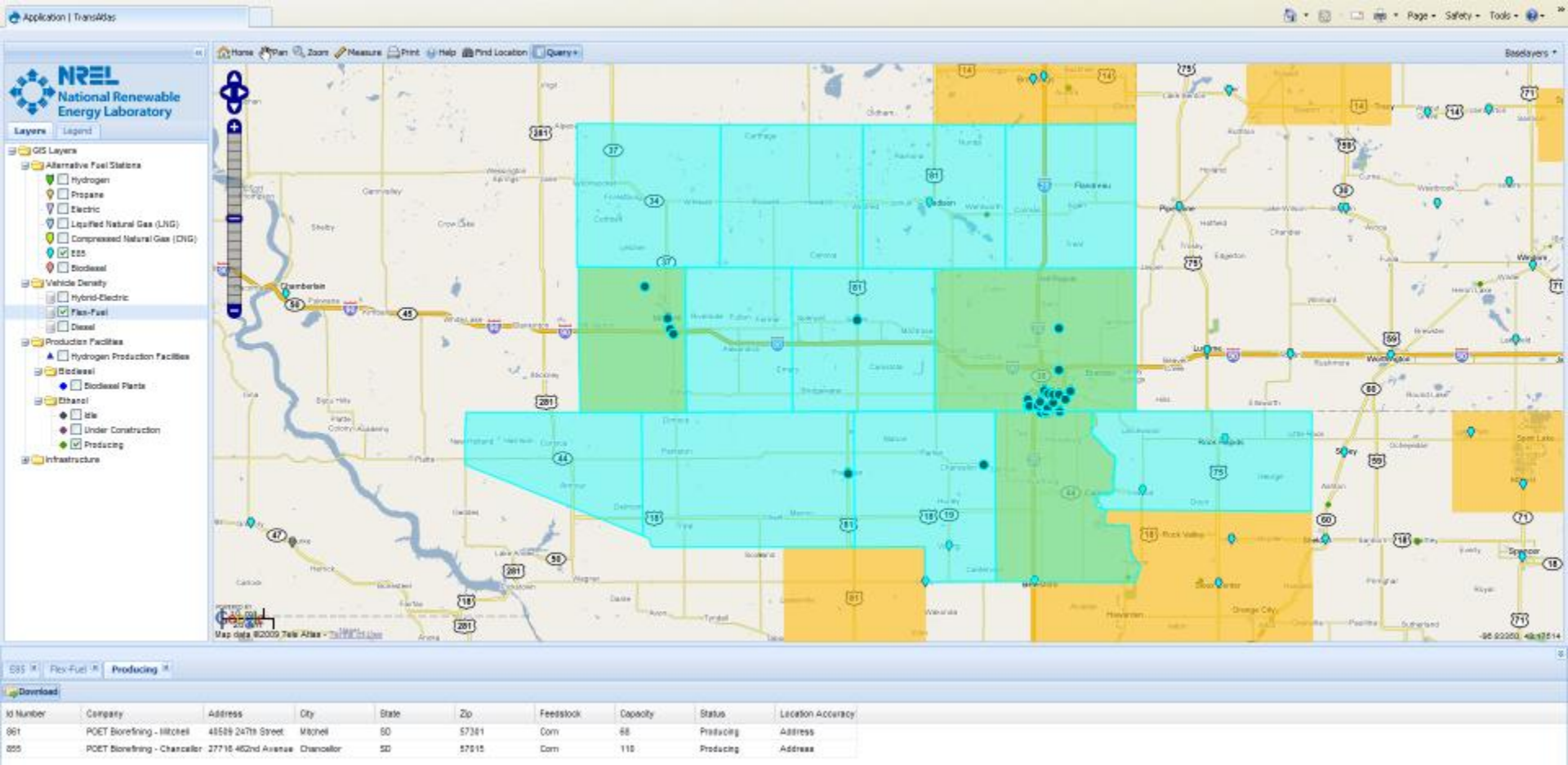
TransAtlas-Main Screen



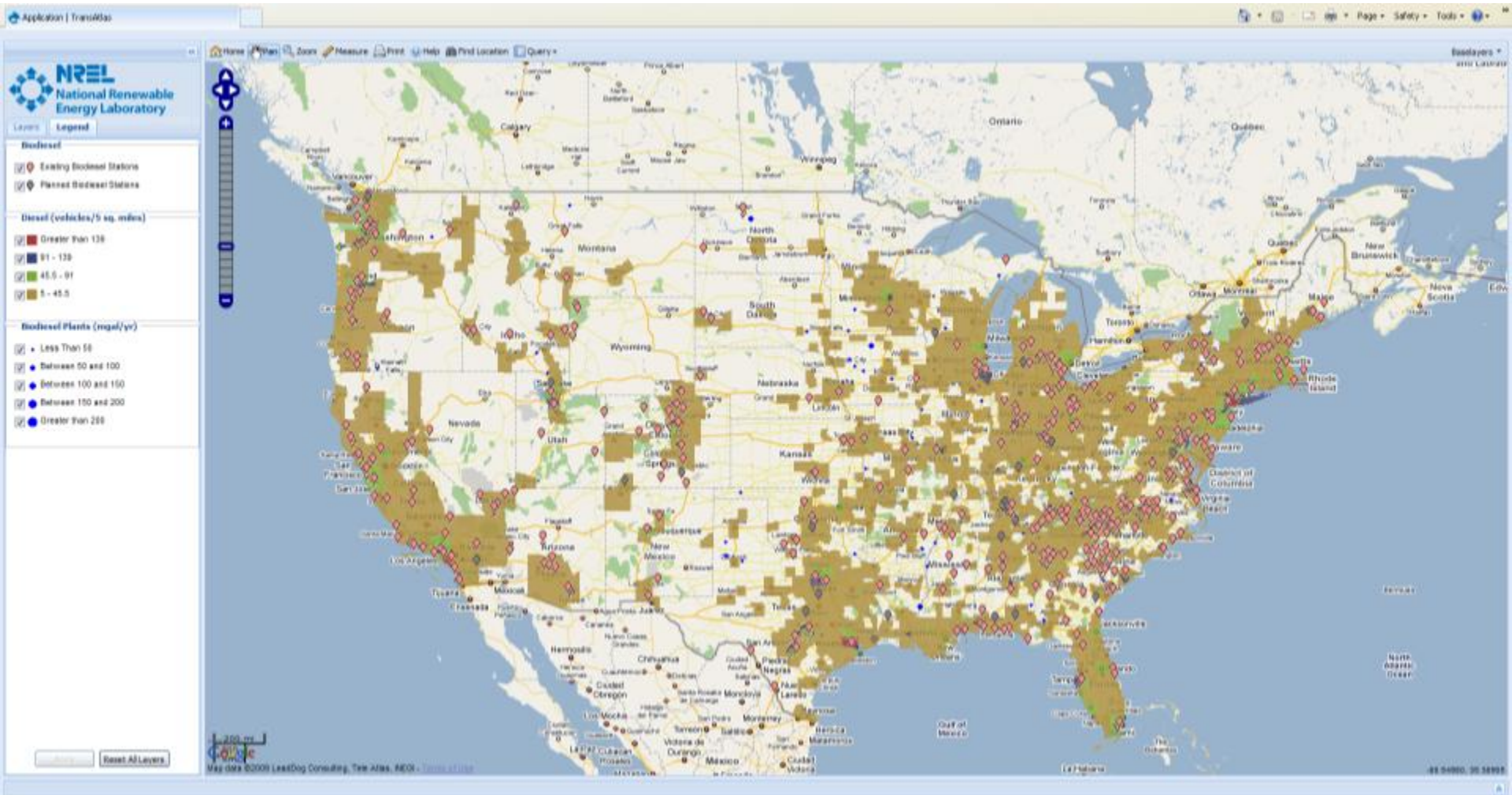
TransAtlas-Ethanol



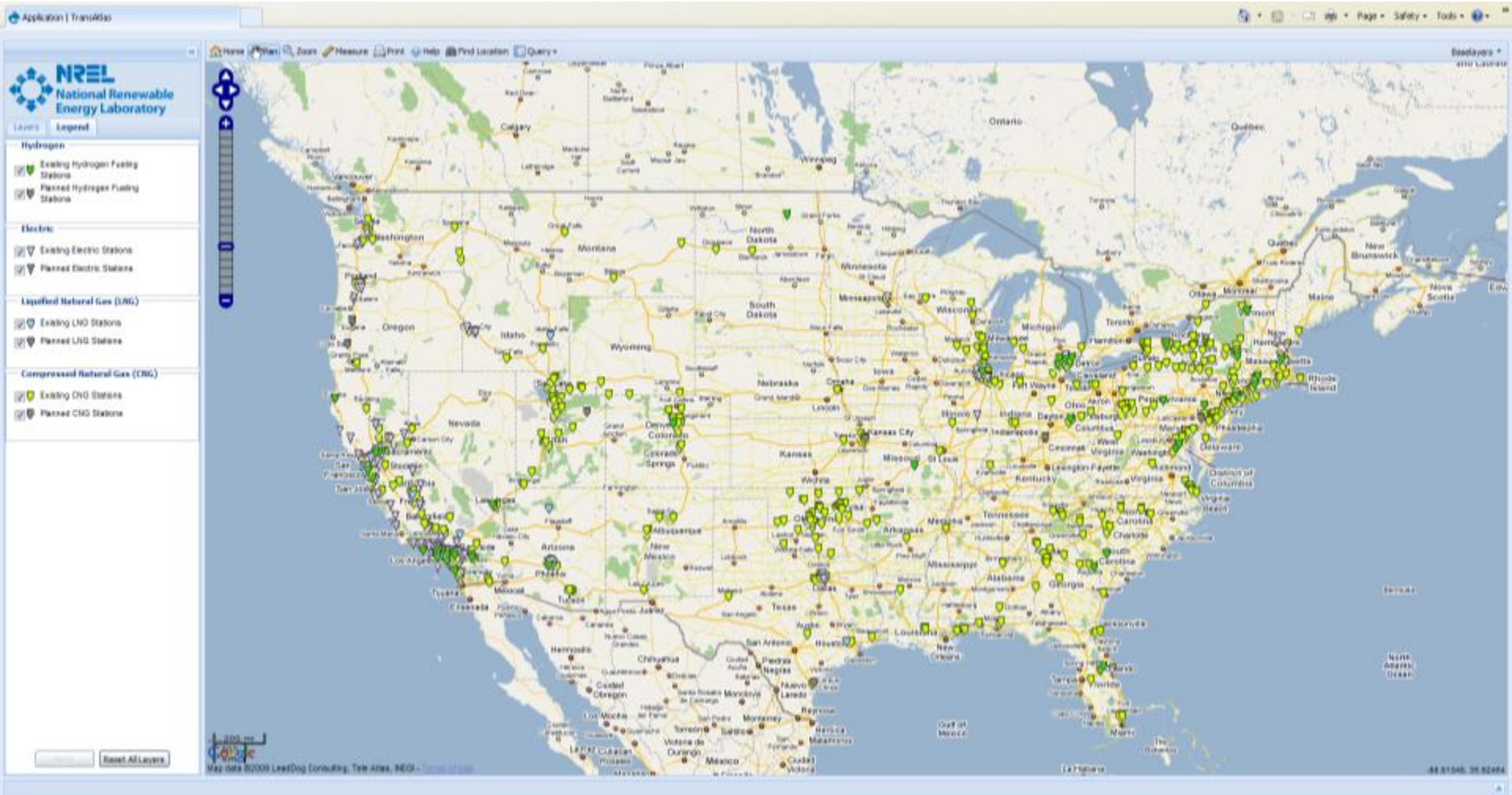
TransAtlas-Ethanol Query



TransAtlas-Biodiesel



TransAtlas-Alternative Fueling Stations



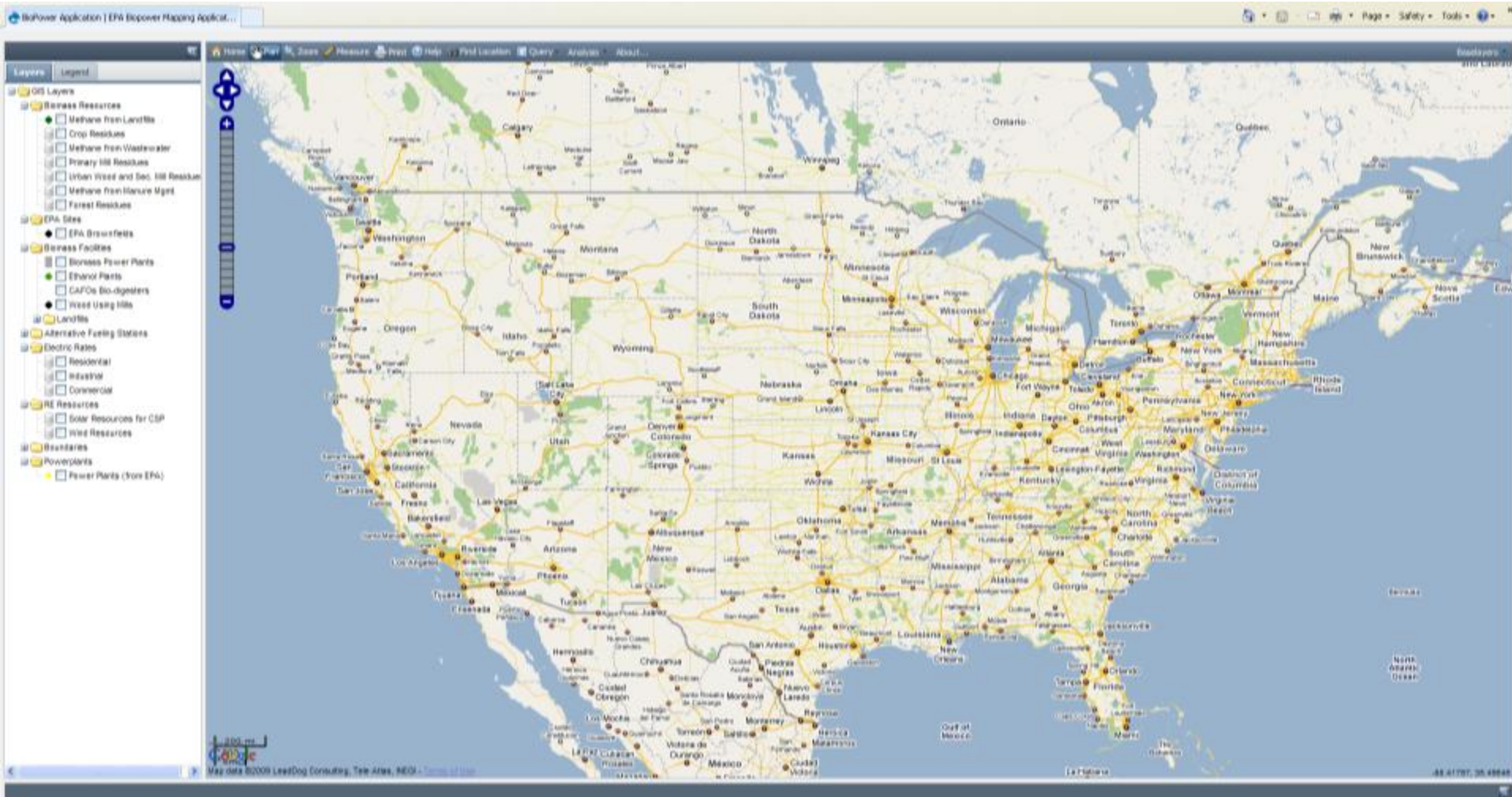
Biopower Assessment Tool

- BioPower is a web 2.0 mapping application that allows users to explore the potential of biomass-to-power conversions at different locations and scales
- Sponsored by EPA Region 6 Blue Skyways
- Live but not yet announced
- Allows for visualization and analysis of biomass resources on a local basis
- Initial screening tool to identify and evaluate sites for potential Biopower development opportunities

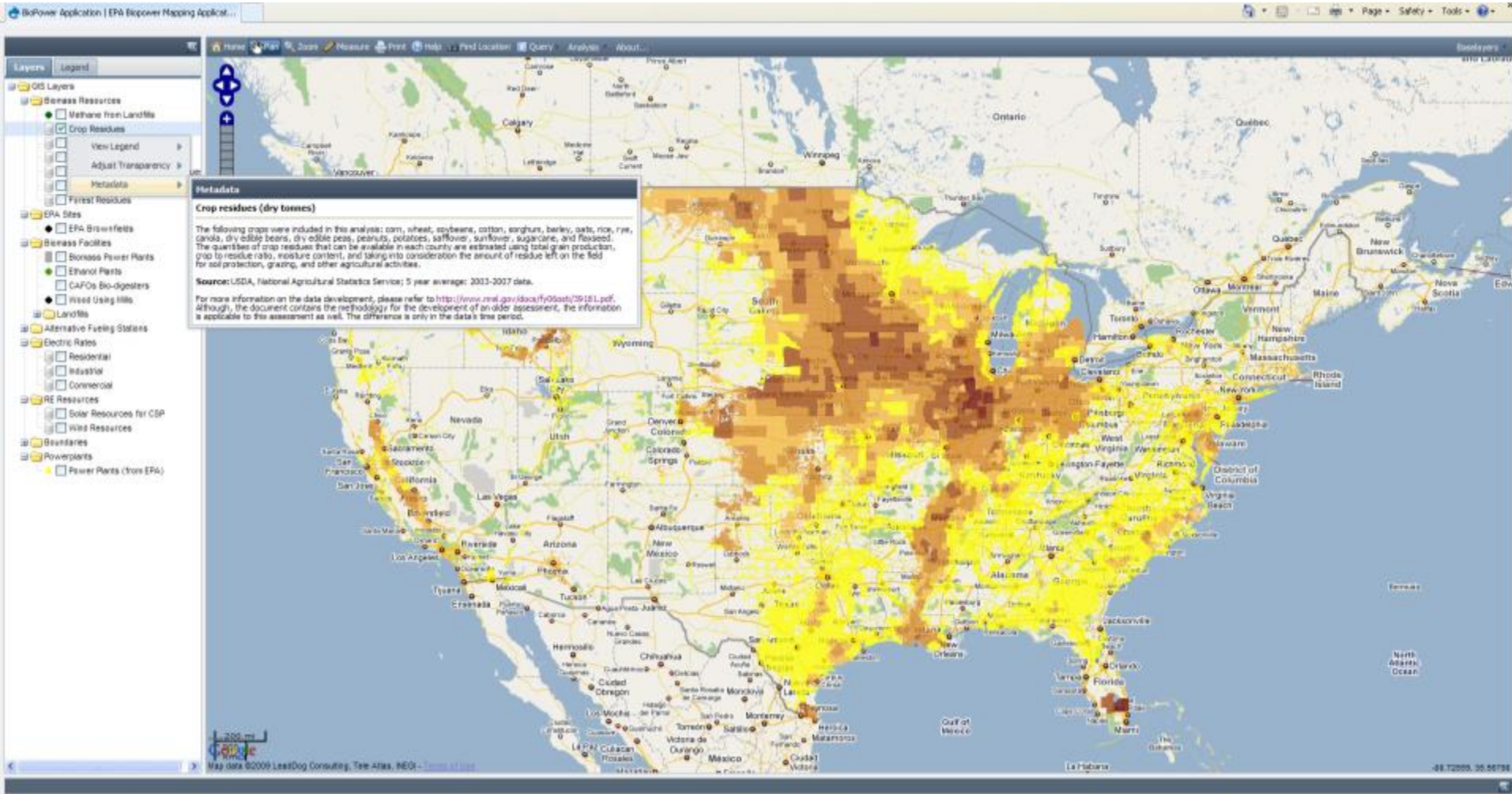
Biopower

<http://rpm.nrel.gov/biopower/biopower/launch>

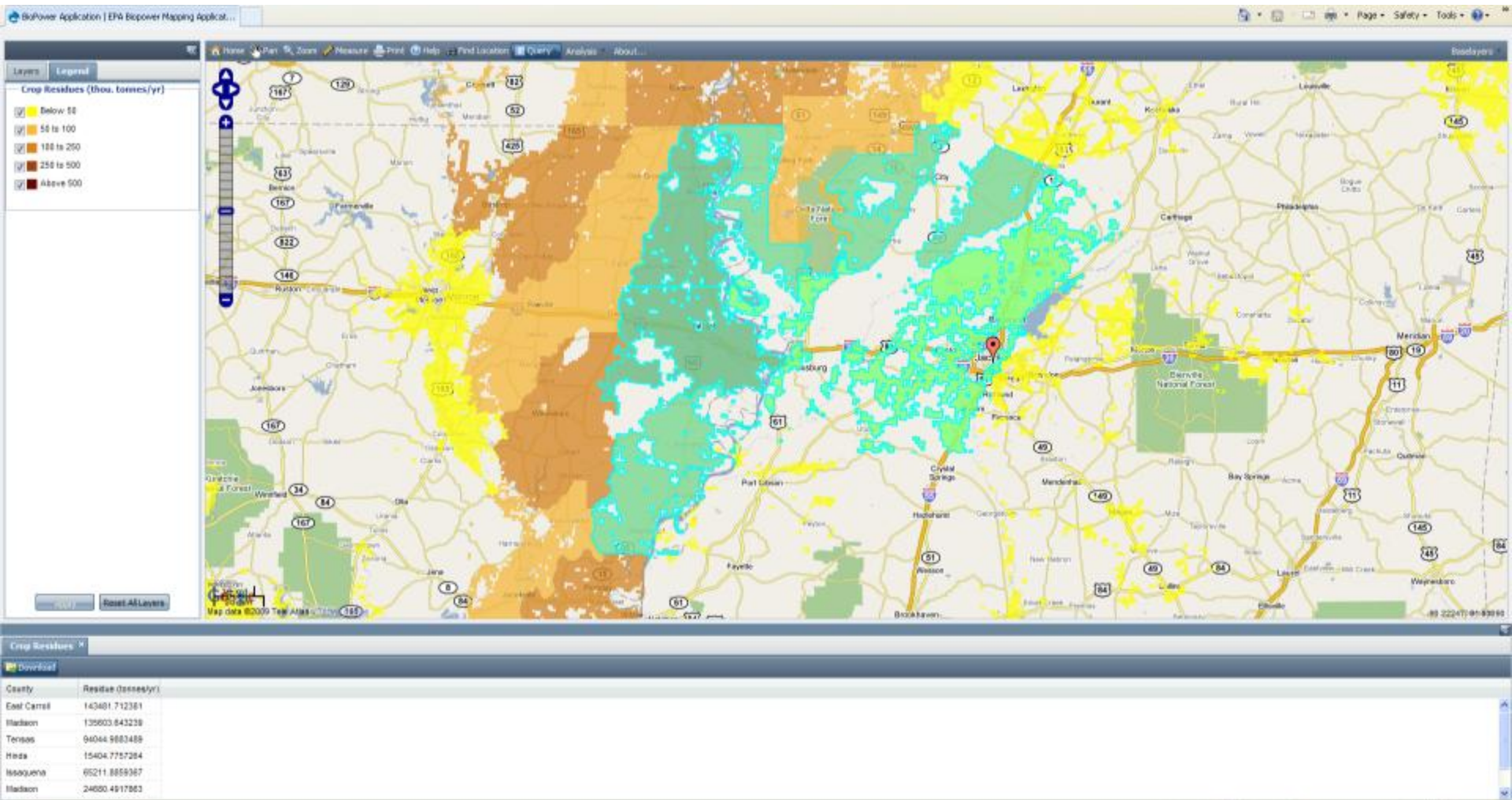
Biopower



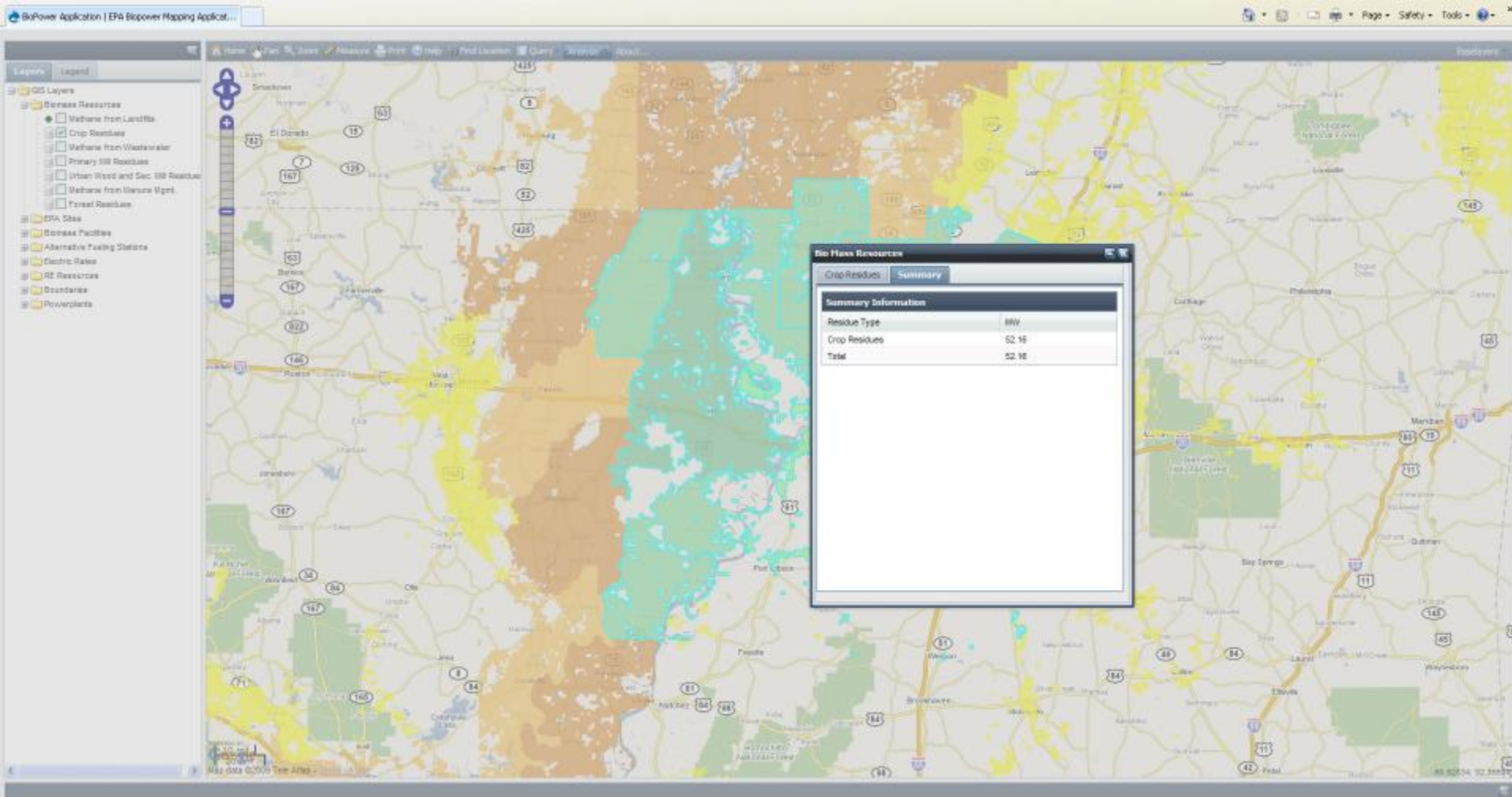
Biopower-Crop Residues



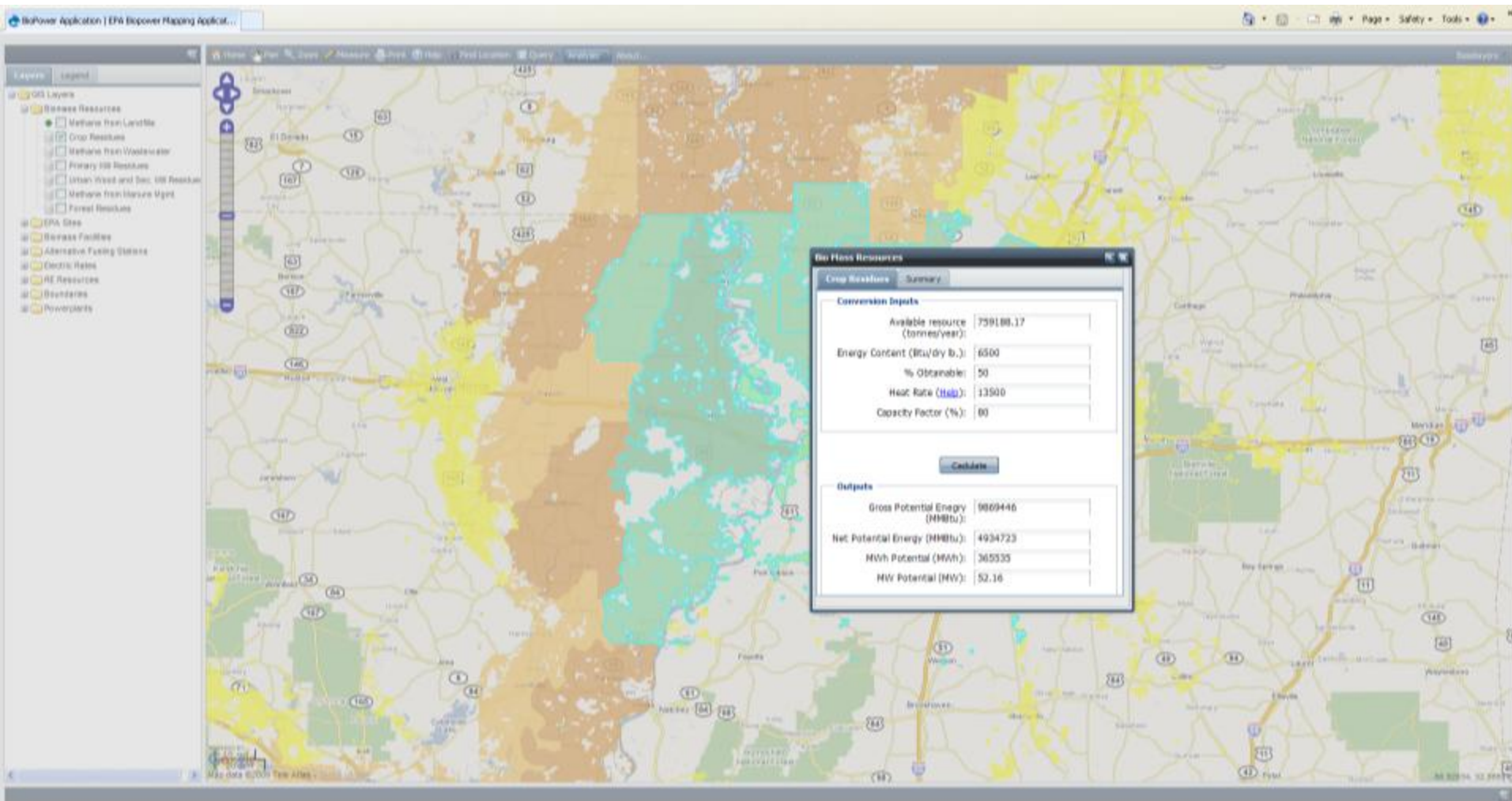
Biopower-Crop Residues Query



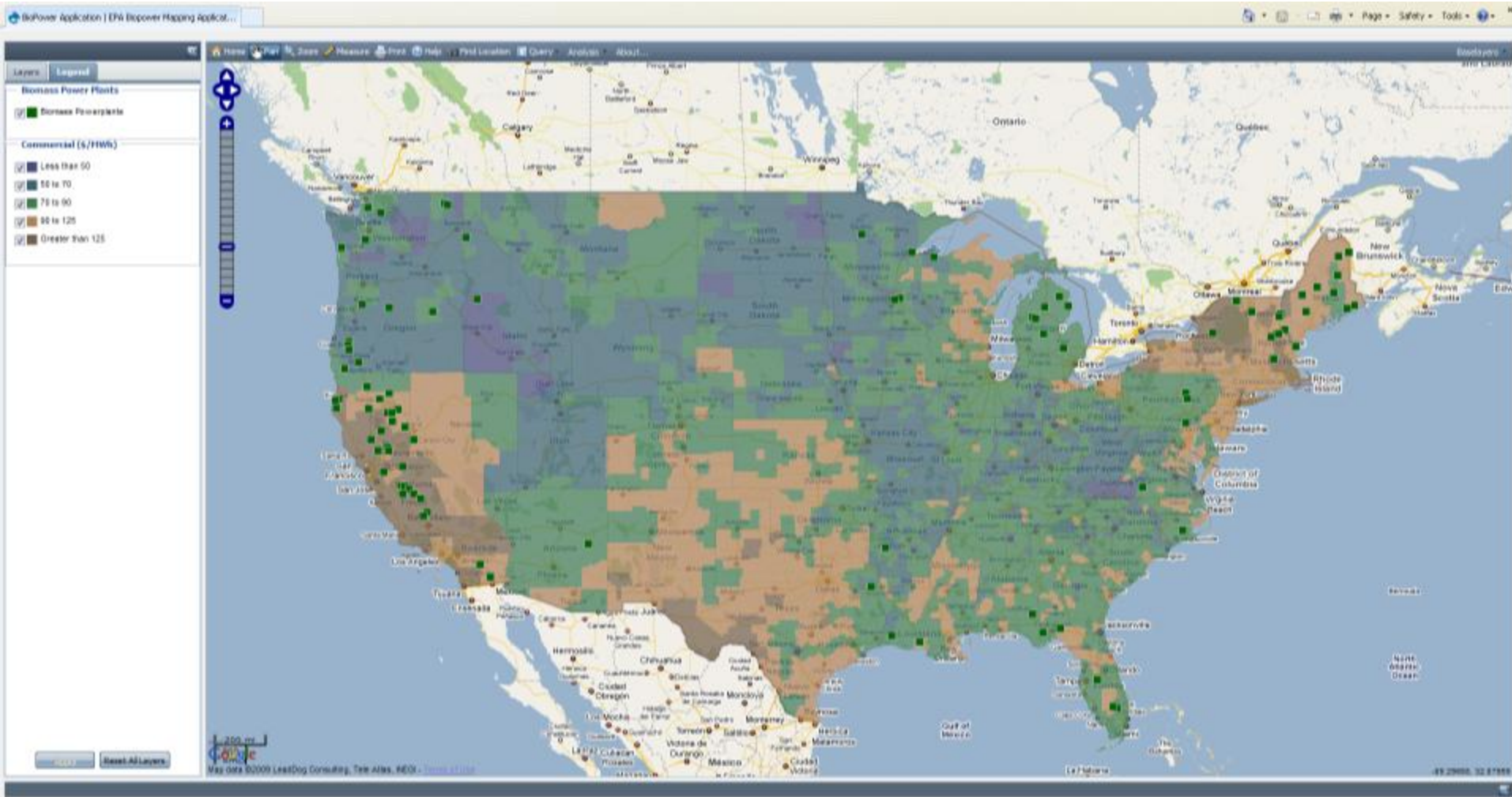
Biopower-Crop Residues Analysis



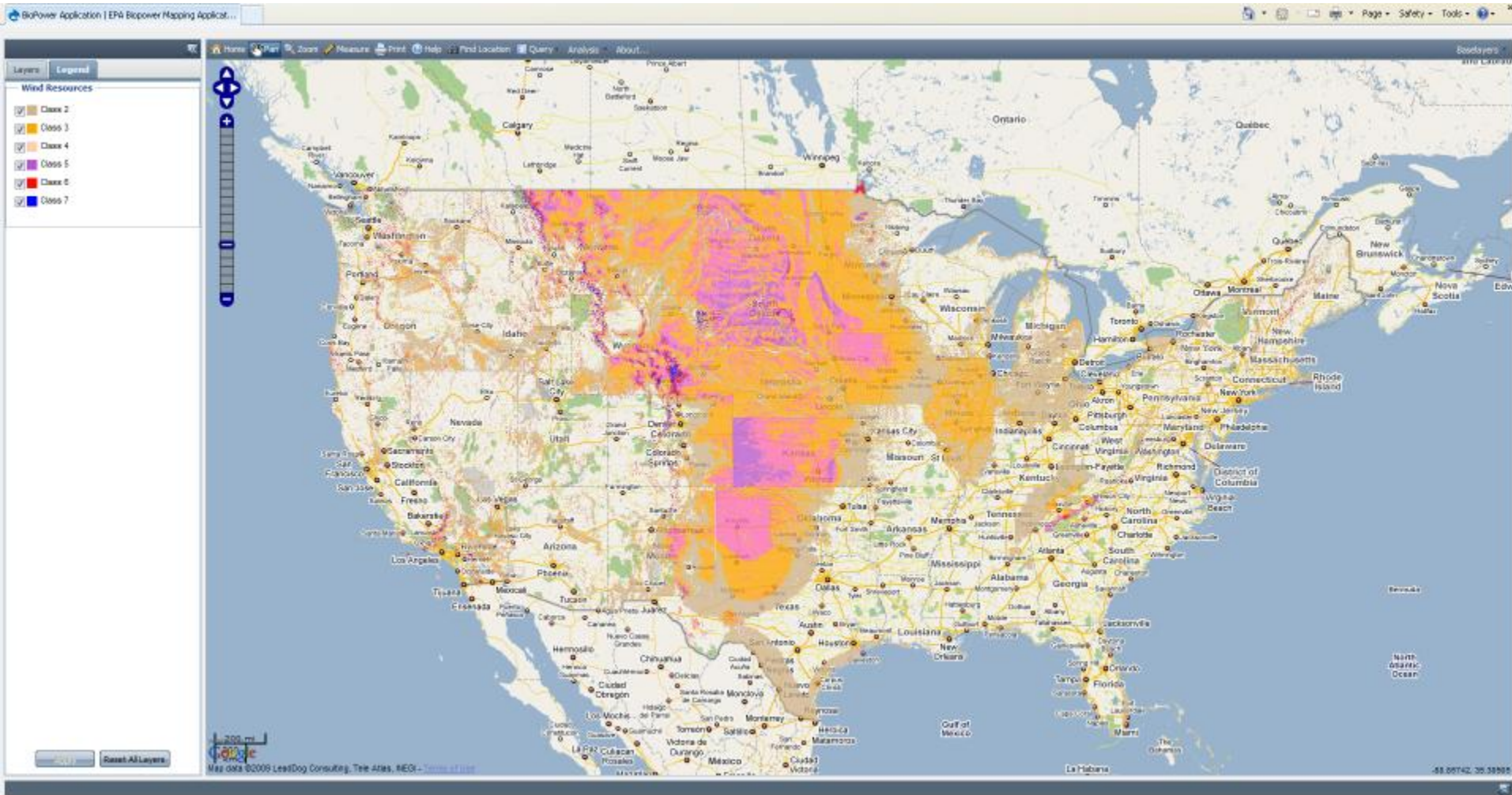
Biopower-Crop Residues Analysis



Biopower-Other layers



Biopower-Other layers



The U.S. Department of Energy's National Renewable Energy Laboratory

www.nrel.gov



Golden, Colorado