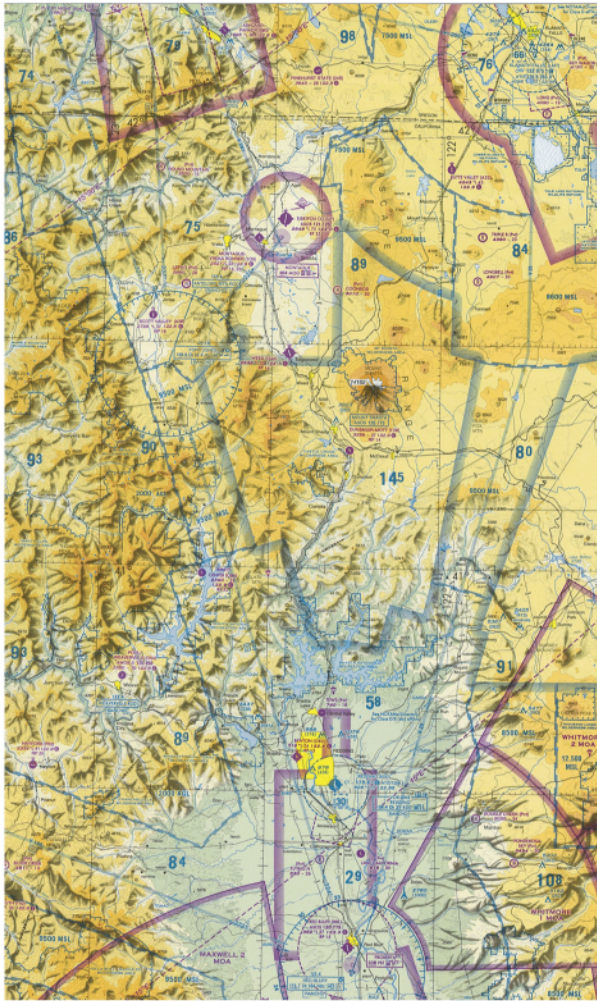




## Sectional Aeronautical Charts

- Primary navigational reference medium used by the VFR pilot community.
- Designed for visual navigation of slow to medium speed aircraft.
- The topographic information consists of the relief and a judicious selection of visual flight checkpoints.
- The aeronautical information provided on this chart includes: visual and radio aids to navigation, airports, controlled airspace, restricted areas, obstructions, and related data.
- Scale: 1,500,000
- Updated: every six months
- Available in digital format



## Visual Charts

