

APPENDIX A. INSCRIPTIONS FOR SIGNS AND GEOGRAPHIC POSITION MARKINGS

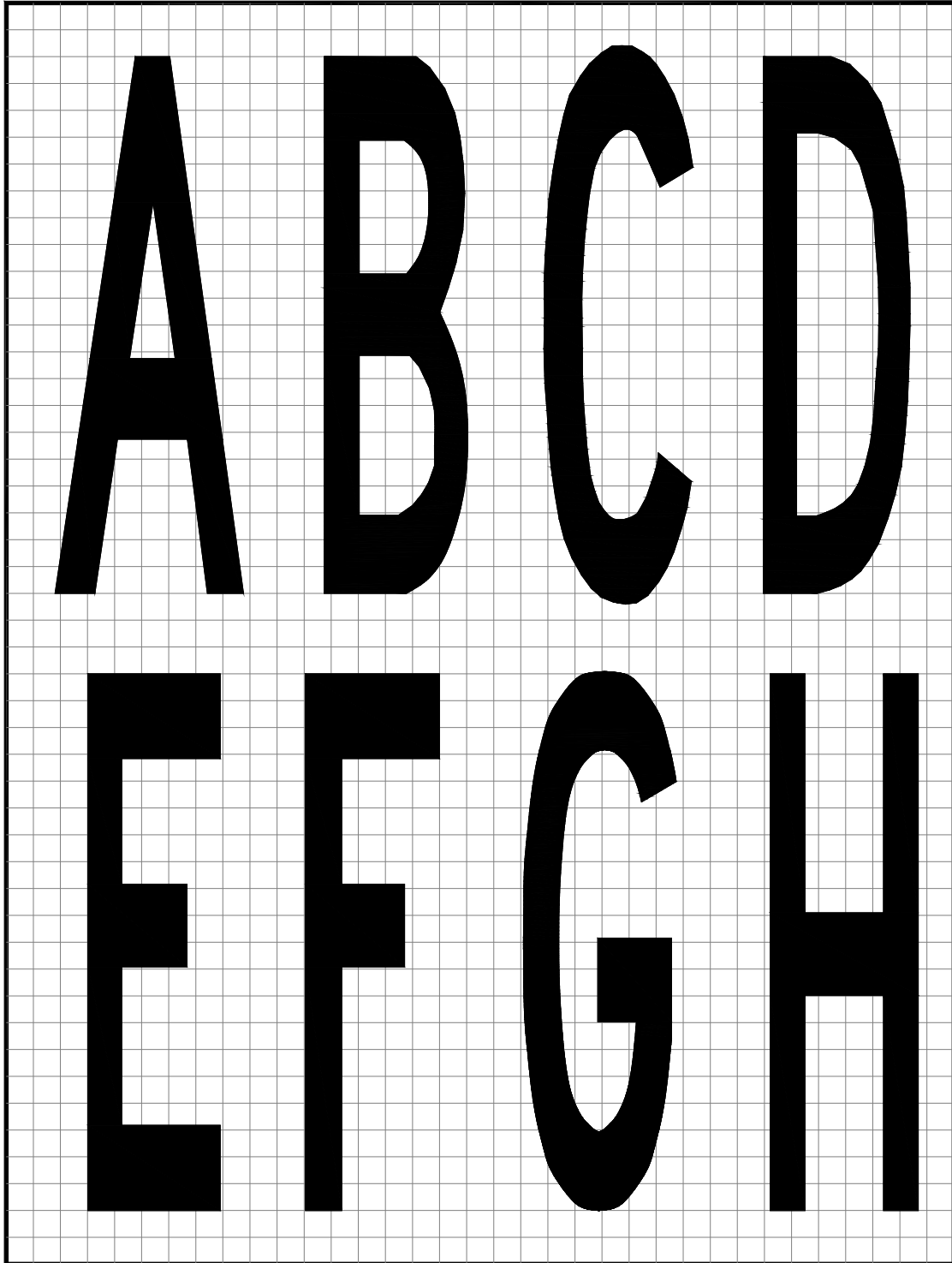


Figure A - 1. Pavement Markings ABCDEFGH

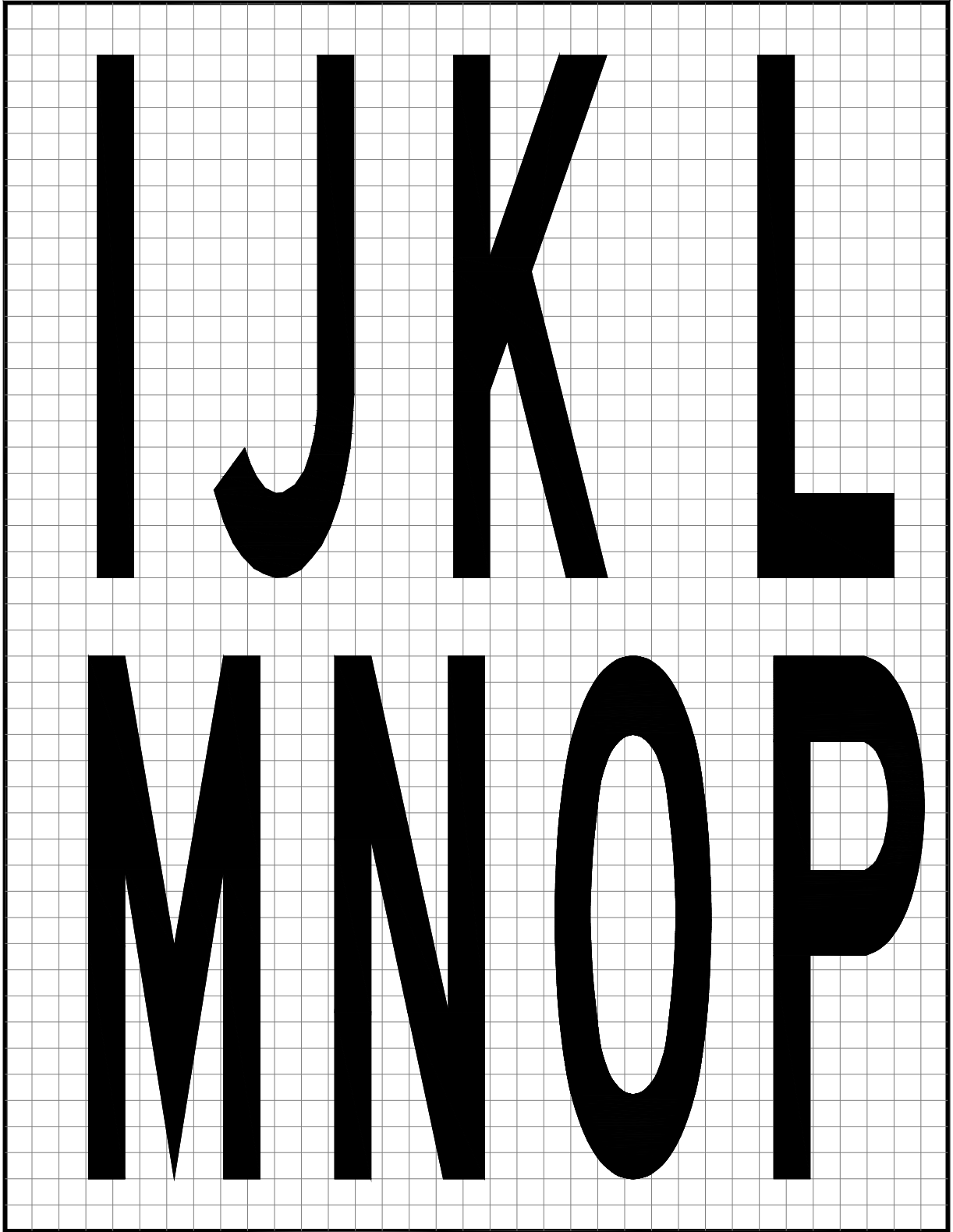


Figure A - 2. Pavement Markings IJKLMNOP

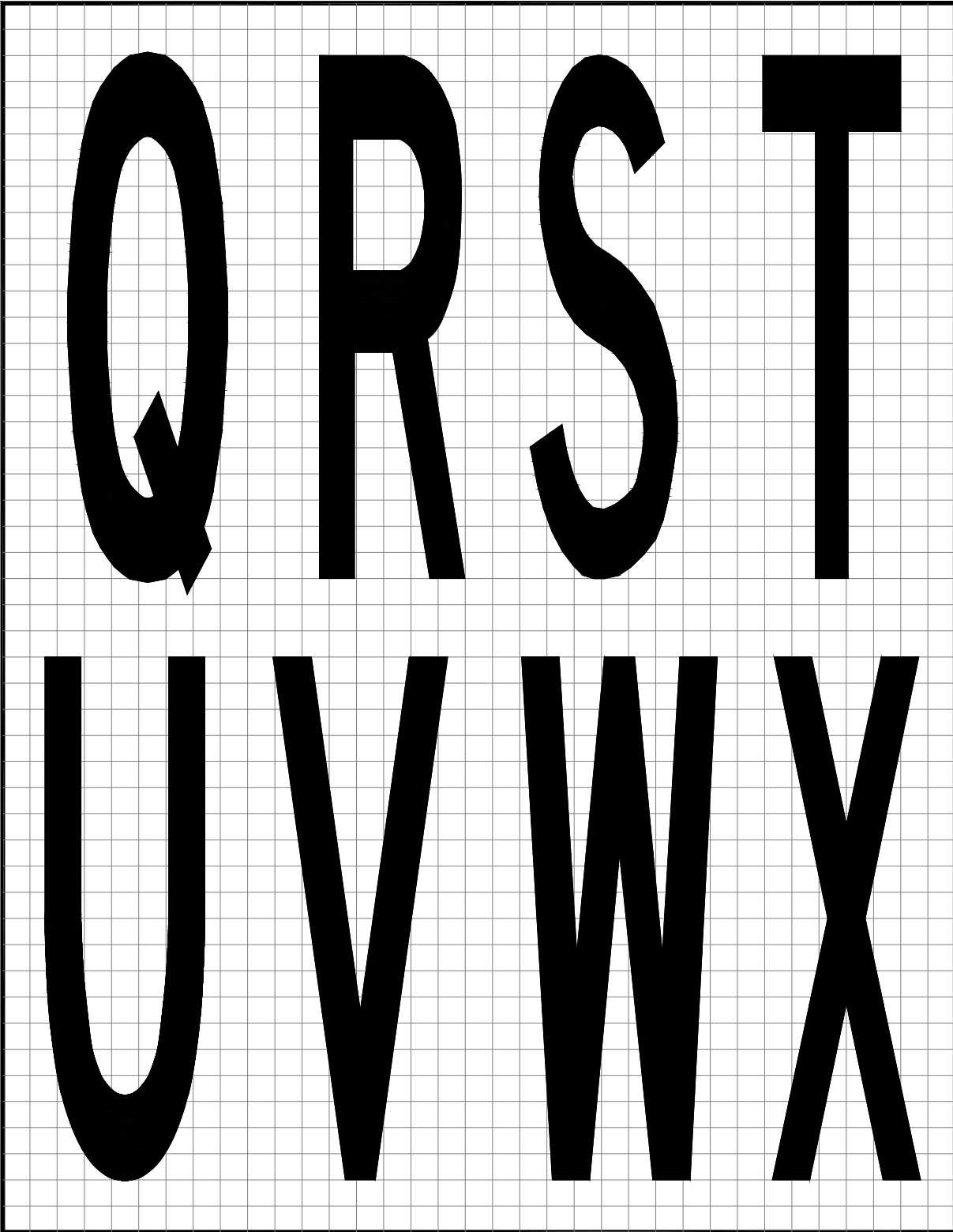


Figure A - 3. Pavement Markings QRSTUVWX

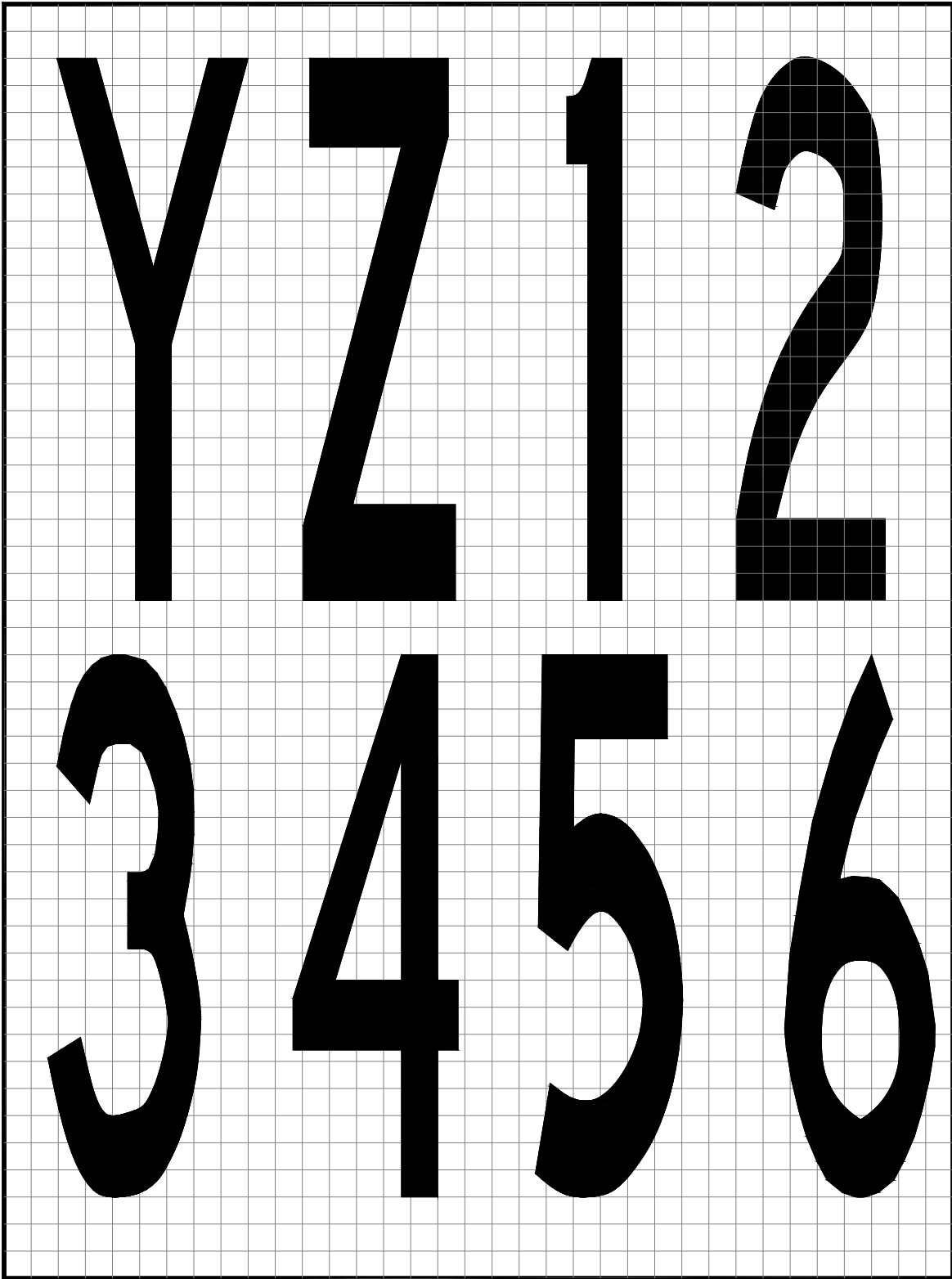


Figure A - 4. Pavement Markings YZ123456

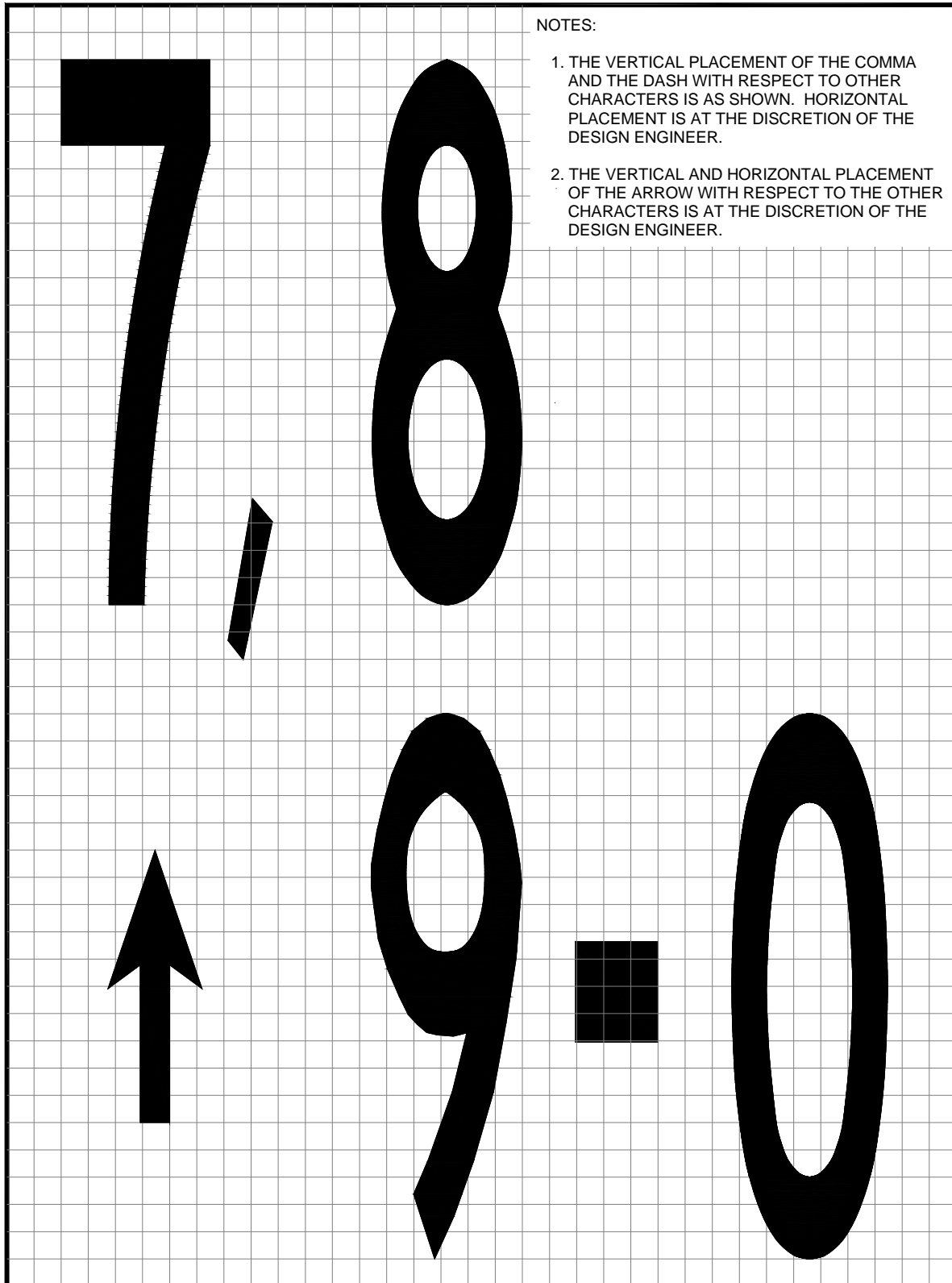


Figure A - 5. Pavement Markings 7890-,↑

Blank Page

APPENDIX B. EXAMPLES OF MARKINGS OUTLINED IN BLACK

This appendix illustrates the acceptable layout for various markings outlined in black. The black paint extends at least 6 inches (15 cm) beyond the outside edge of the markings. All spaces between paint lines in markings composed of two or more lines or dashes are painted in black as illustrated in the figures below. An alternate outlining pattern is provided for dashed taxiway edge line markings. These figures are not drawn to scale.

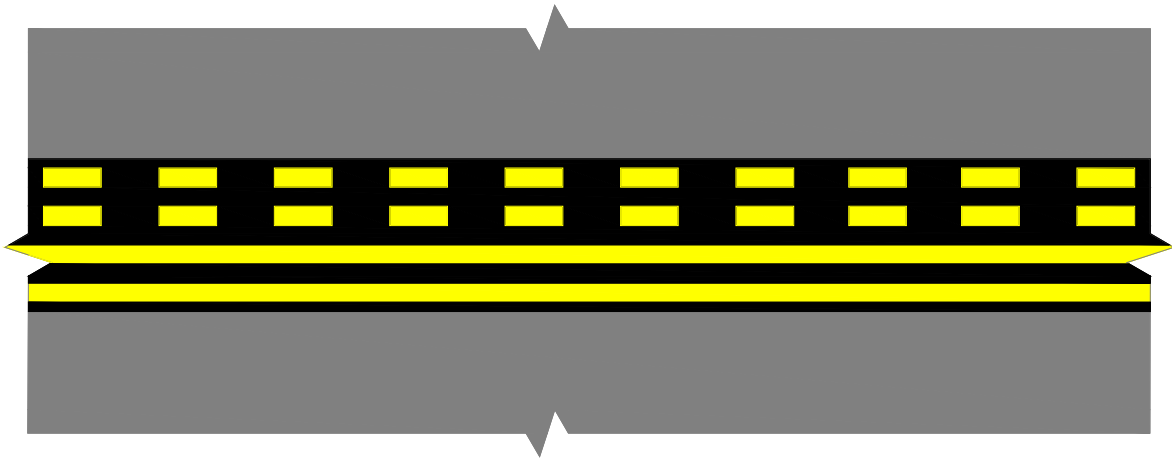


Figure B - 1. Runway Holding Position Marking

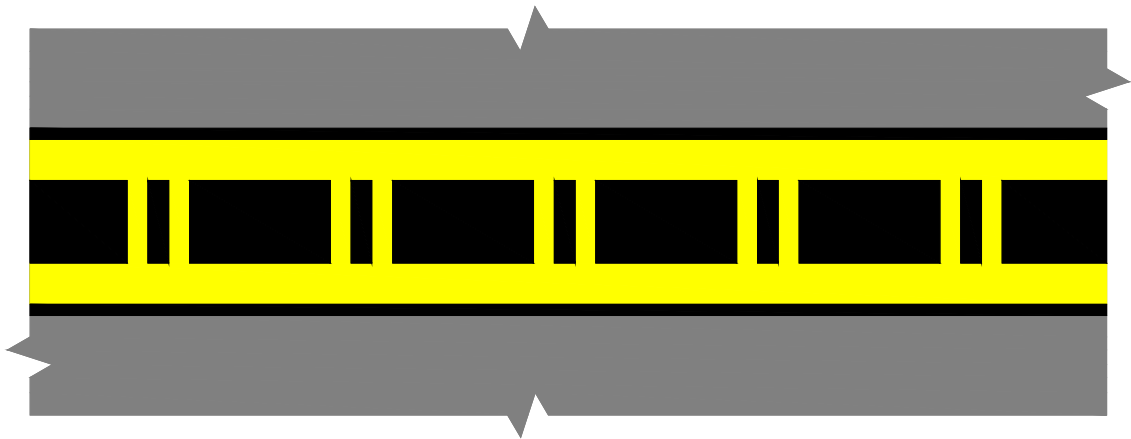


Figure B - 2. ILS/MLS Holding Position Marking

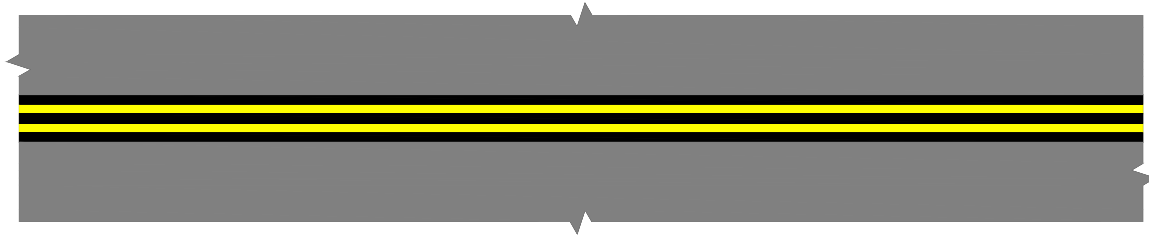


Figure B - 3. Continuous Taxiway Edge Line Marking

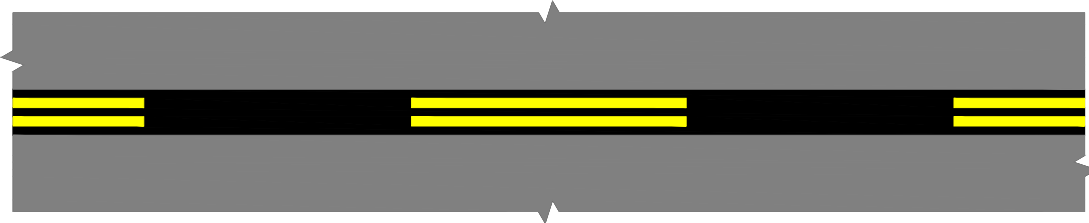


Figure B - 4. Dashed Taxiway Edge Line Marking

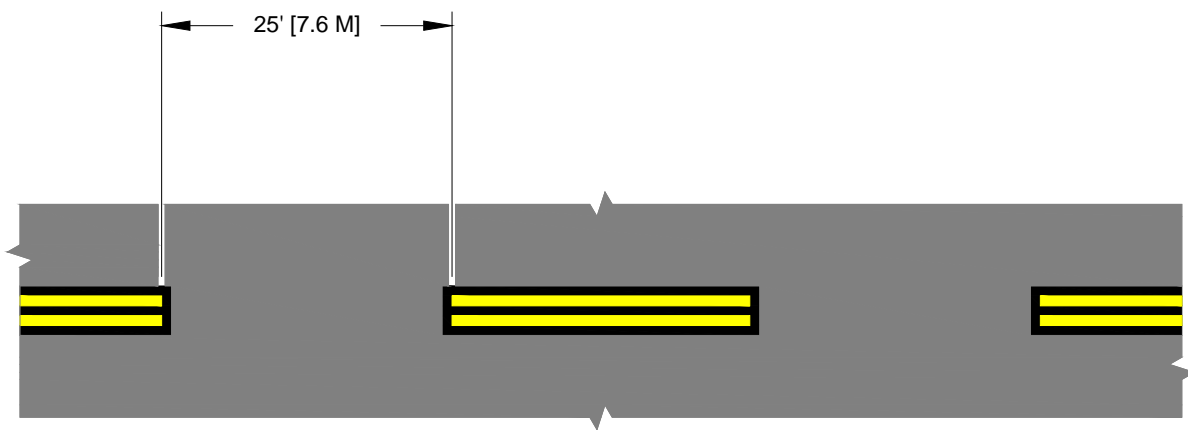


Figure B - 5. Alternate Outlining Method for Dashed Taxiway Edge Line Marking

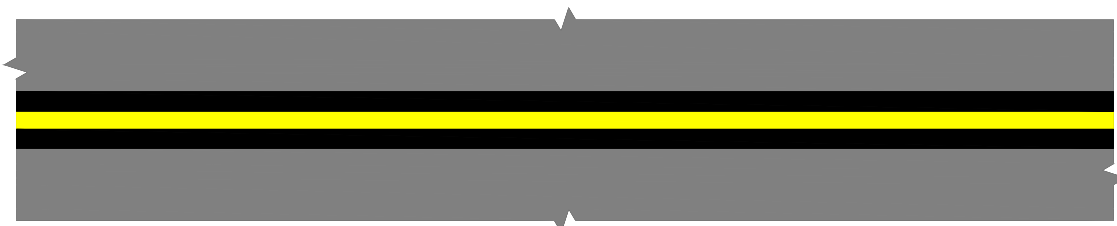


Figure B - 6. Taxiway Centerline Marking

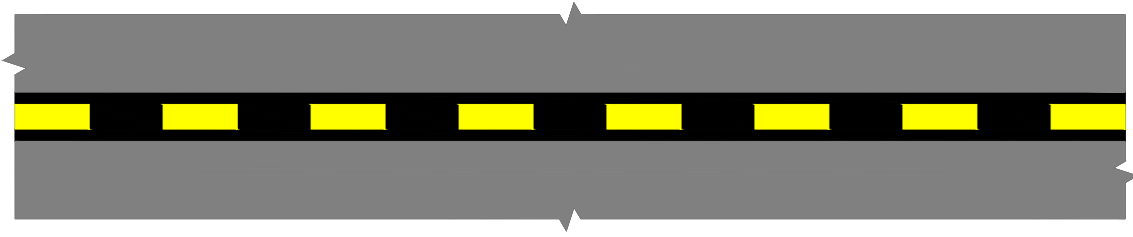


Figure B - 7. Intermediate Holding Position Markings

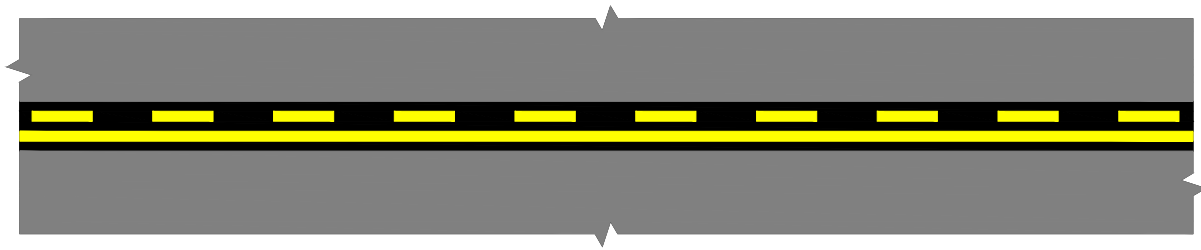


Figure B - 8. Non-movement Area Boundary Marking

Blank Page