

# Traffic Safety Facts

2008 Data

## Older Population

*“In 2008, older people accounted for 15 percent of all traffic fatalities and 18 percent of all pedestrian fatalities.”*

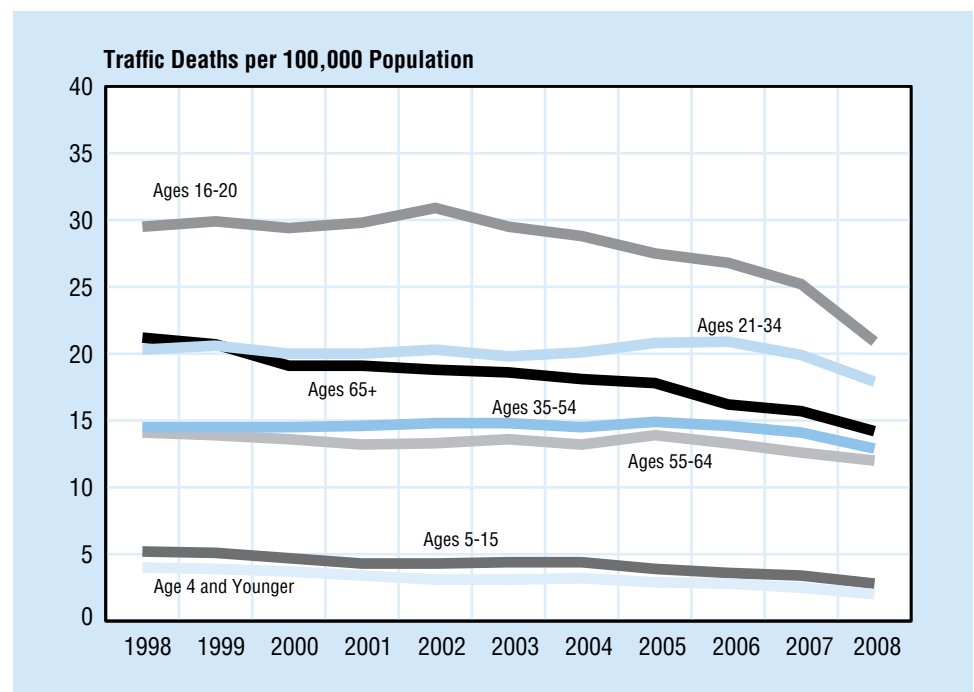
This fact sheet focuses on the older population in the United States which includes all people age 65 and older. In 2008, 13 percent of the total U.S. resident population (34 million) were people age 65 and older.

There were 31 million older licensed drivers in 2007 — an 19-percent increase from 1997. In contrast, the total number of licensed drivers increased by only 13 percent from 1997 to 2007. Older drivers made up 15 percent of all licensed drivers in 2007, compared with 14 percent in 1997.

In 2008, 183,000 older individuals were injured in traffic crashes, accounting for 8 percent of all the people injured in traffic crashes during the year. These older individuals made up 15 percent of all traffic fatalities, 14 percent of all vehicle occupant fatalities, and 18 percent of all pedestrian fatalities.

Most traffic fatalities involving older drivers in 2008 occurred during the daytime (80%), occurred on weekdays (72%), and involved other vehicles (69%).

Figure 1  
**Motor Vehicle Traffic Fatality Rates by Age Group, 1998-2008**



Of all adult drivers, older drivers involved in fatal crashes had the lowest proportion of total drivers with blood alcohol concentration (BAC) of .08 grams per deciliter (g/dL) or higher. Among all fatally injured adult pedestrians, older pedestrians also had the lowest proportion of total pedestrians with BAC of .08 g/dL or higher.

Table 1  
**Age and Alcohol, 2008**

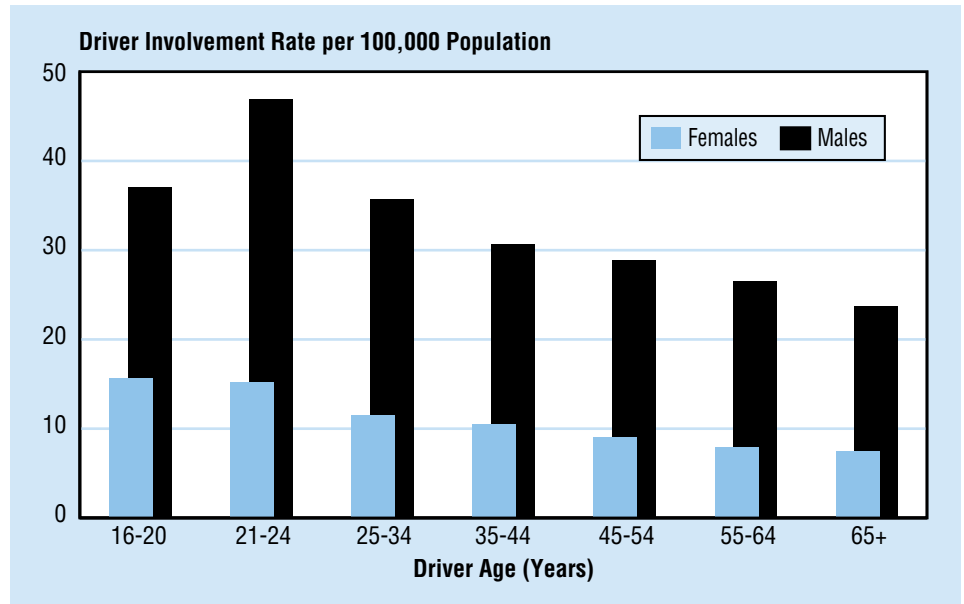
Age Group (Years)	Drivers Involved in Fatal Crashes			Pedestrian Fatalities		
	Total	BAC= .08+		Total	BAC= .08+	
		Number	Percent of Total		Number	Percent of Total
<16	213	21	10	316	14	4
16-20	5,729	996	17	286	85	30
21-34	15,057	4,826	32	852	427	50
35-54	17,075	3,945	23	1,542	751	49
55-64	5,695	708	12	547	191	35
65+	5,569	304	5	803	66	8
<b>Total</b>	<b>*50,186</b>	<b>10,946</b>	<b>22</b>	<b>**4,378</b>	<b>1,551</b>	<b>35</b>

\*Includes 848 drivers of unknown age.

\*\*Includes 32 pedestrian fatalities of unknown age.

*“Older drivers involved in fatal crashes in 2008 had the lowest proportion of intoxication of all adult drivers.”*

Figure 2  
**Driver Involvement Rates in Fatal Crashes by Age and Sex, 2008**



Over three-fourths (77%) of all older occupants of passenger vehicles involved in fatal crashes were using restraints at the time of the crash, compared to 63 percent for other adult occupants (18 to 64 years old).

For older people, 64 percent of pedestrian fatalities in 2008 occurred at non-intersection locations. For other pedestrians, 79 percent of fatalities occurred at non-intersection locations. In two-vehicle fatal crashes involving an older driver and a younger driver, the vehicle driven by the older person was nearly twice as likely to be the one that was struck (58% and 35%, respectively). In 48 percent of these crashes, both vehicles were proceeding straight at the time of the collision. In 22 percent, the older driver was turning left — 4 times more often than the younger driver.

*“In two-vehicle fatal crashes with an older and a younger driver, the older driver’s vehicle was nearly twice as likely to be the one that was struck.”*

Table 2  
**Involvement of the Older Population in Traffic Fatalities by Sex, 1998 and 2008**

	1998			2008			Percentage Change, 1998-2008	
	Total	Age 65+	Percentage of Total	Total	Age 65+	Percentage of Total	Total	Age 65+
<b>Population (thousands)</b>								
Total	270,248	34,385	12.7	304,060	38,870	12.8	13	13
Male	132,030	14,194	10.8	149,925	16,465	11.0	14	16
Female	138,218	20,191	14.6	154,135	22,405	14.5	12	11
<b>Drivers Involved in Fatal Crashes</b>								
Total	56,604	6,690	11.8	50,186	5,569	11.1	-11	-17
Male	40,816	4,535	11.1	36,881	3,901	10.6	-10	-14
Female	15,089	2,154	14.3	12,568	1,666	13.3	-17	-23
<b>Driver Fatalities</b>								
Total	24,743	4,188	16.9	24,175	3,458	14.3	-2	-17
Male	17,992	2,789	15.5	18,694	2,422	13.0	4	-13
Female	6,750	1,399	20.7	5,473	1,035	18.9	-19	-26
<b>Total Traffic Fatalities</b>								
Total	41,501	7,288	17.6	37,261	5,533	14.8	-10	-24
Male	27,608	4,022	14.6	26,616	3,383	12.7	-4	-16
Female	13,885	3,266	23.5	10,631	2,149	20.2	-23	-34
<b>Occupant Fatalities</b>								
Total	35,382	6,035	17.1	31,979	4,618	14.4	-10	-23
Male	23,302	3,285	14.1	22,794	2,798	12.3	-2	-15
Female	12,072	2,750	22.8	9,175	1,819	19.8	-24	-34
<b>Pedestrian Fatalities</b>								
Total	5,228	1,176	22.5	4,378	803	18.3	-16	-32
Male	3,558	677	19.0	3,053	487	16.0	-14	-28
Female	1,670	499	29.9	1,321	316	23.9	-21	-37

## Older Population Age Groups

The following table and graphs provide data for subgroups of the older population: 65-69, 70-74, 75-79, 80-84, and 85+ years.

Table 3  
**Driver Involvement in Fatal Crashes and Pedestrian Fatalities in the Older Population by Age Group, 2008**

	Age Group (Years)					Total
	65-69	70-74	75-79	80-84	85+	
Drivers Involved in Fatal Crashes	1,592	1,321	1,116	858	682	5,569
Pedestrian Fatalities	203	157	148	149	146	803

Figure 3  
**Motor Vehicle Traffic Fatality Rates in the Older Population by Age Group, 1998-2008**

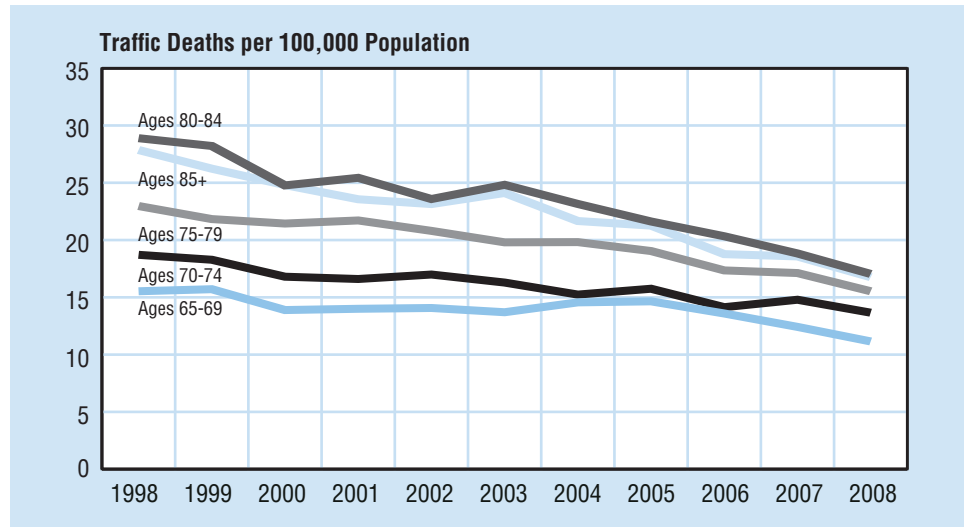
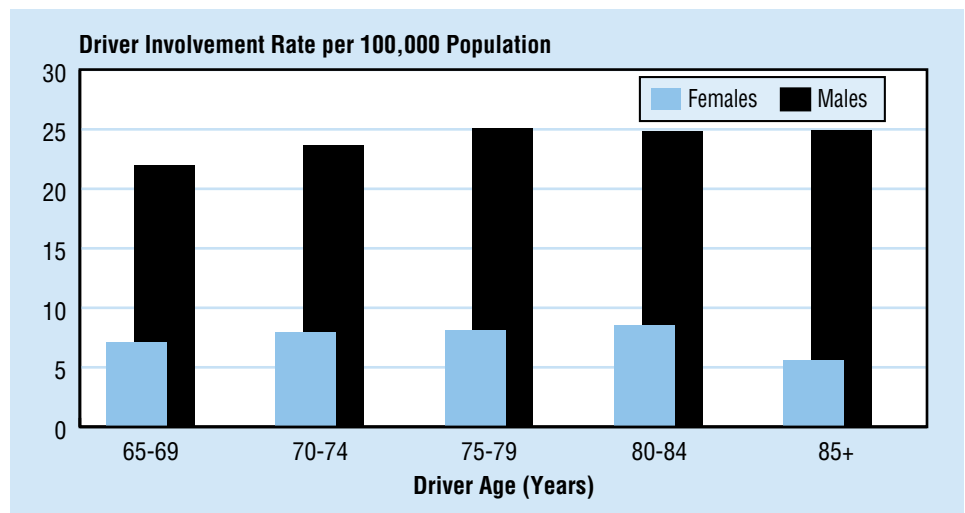


Figure 4  
**Involvement Rates for Older Drivers in Fatal Crashes by Age Group and Sex, 2008**



### For more information:

Information on traffic fatalities is available from the National Center for Statistics and Analysis, NVS-424, 1200 New Jersey Avenue SE., Washington, DC 20590. NCSA can be contacted at 800-934-8517. Fax messages should be sent to 202-366-7078. General information on highway traffic safety can be accessed by Internet users at [www.nhtsa.gov/portal/site/nhtsa/ncsa](http://www.nhtsa.gov/portal/site/nhtsa/ncsa). To report a safety-related problem or to inquire about motor vehicle safety information, contact the Vehicle Safety Hotline at 888-327-4236.

Other fact sheets available from the National Center for Statistics and Analysis are *Overview, Alcohol, African American, Bicyclists and Other Cyclists, Children, Hispanic, Large Trucks, Motorcycles, Occupant Protection, Pedestrians, Race and Ethnicity, Rural/Urban Comparisons, School Transportation-Related Crashes, Speeding, State Alcohol Estimates, State Traffic Data, and Young Drivers*. Detailed data on motor vehicle traffic crashes are published annually in *Traffic Safety Facts: A Compilation of Motor Vehicle Crash Data from the Fatality Analysis Reporting System and the General Estimates System*. The fact sheets and annual Traffic Safety Facts report can be accessed online at [www-nrd.nhtsa.dot.gov/CATS/index.aspx](http://www-nrd.nhtsa.dot.gov/CATS/index.aspx).

Table 4

**Driver Involvement in Fatal Traffic Crashes by State and Age Group, 2008**

State	Total*	Total 65+	Percentage of Total	Age Group (Years)								
				<16	16-20	21-34	35-54	55-69	70-74	75-79	80-84	85+
Alabama	1,285	111	8.6	5	157	408	437	188	30	24	13	12
Alaska	91	8	8.8	4	13	28	27	15	3	0	0	0
Arizona	1,236	139	11.2	5	144	364	393	179	33	27	23	17
Arkansas	778	89	11.4	5	98	216	249	135	26	17	15	6
California	4,710	423	9.0	11	516	1,526	1,586	646	84	84	62	59
Colorado	712	80	11.2	3	84	205	264	95	19	13	8	13
Connecticut	355	40	11.3	1	31	103	141	40	6	11	13	4
Delaware	153	16	10.5	0	16	52	54	19	2	5	2	0
District of Columbia	44	6	13.6	0	0	19	13	5	0	2	0	3
Florida	4,217	474	11.2	9	480	1,261	1,427	569	113	101	69	62
Georgia	2,057	227	11.0	9	212	641	681	328	50	44	25	31
Hawaii	139	14	10.1	0	18	45	45	20	0	3	3	3
Idaho	302	28	9.3	4	41	77	112	47	12	3	3	2
Illinois	1,434	163	11.4	5	141	452	498	177	36	32	30	30
Indiana	1,118	107	9.6	3	144	319	412	158	26	26	11	9
Iowa	570	84	14.7	2	62	148	192	98	21	15	14	14
Kansas	496	66	13.3	2	63	139	160	78	19	11	10	9
Kentucky	1,099	117	10.6	5	117	309	421	153	32	22	20	10
Louisiana	1,167	92	7.9	8	124	411	404	143	23	18	13	9
Maine	204	30	14.7	1	18	44	75	42	7	9	5	3
Maryland	817	85	10.4	3	91	238	287	114	24	19	14	12
Massachusetts	442	53	12.0	2	59	138	136	58	8	12	7	15
Michigan	1,409	201	14.3	3	163	360	490	206	48	46	35	28
Minnesota	640	91	14.2	6	64	184	206	105	22	19	14	17
Mississippi	985	102	10.4	9	101	295	364	139	35	21	8	9
Missouri	1,246	148	11.9	6	159	350	430	179	33	29	28	21
Montana	284	29	10.2	2	30	87	96	51	6	0	8	3
Nebraska	282	45	16.0	2	45	61	90	48	10	5	11	9
Nevada	444	41	9.2	0	50	130	155	75	9	11	3	3
New Hampshire	195	23	11.8	0	23	43	84	28	4	6	4	3
New Jersey	805	105	13.0	2	97	246	256	117	14	22	16	18
New Mexico	445	40	9.0	2	55	142	143	67	12	6	8	2
New York	1,699	233	13.7	3	179	500	576	238	48	46	44	28
North Carolina	1,878	208	11.1	4	223	551	651	281	56	51	26	18
North Dakota	137	13	9.5	5	17	39	48	17	1	3	3	4
Ohio	1,648	208	12.6	6	185	438	576	278	51	39	34	25
Oklahoma	1,002	128	12.8	6	134	277	322	168	34	23	16	14
Oregon	519	65	12.5	1	33	149	182	99	14	16	9	8
Pennsylvania	2,019	255	12.6	7	217	593	679	321	55	50	52	30
Rhode Island	81	15	18.5	0	9	25	24	10	1	2	5	3
South Carolina	1,163	116	10.0	13	129	370	388	164	26	23	23	10
South Dakota	145	21	14.5	2	20	40	39	31	4	4	1	3
Tennessee	1,381	180	13.0	8	165	398	467	211	45	38	28	14
Texas	4,585	392	8.5	23	571	1,484	1,535	606	99	69	58	33
Utah	350	32	9.1	4	36	131	112	43	6	5	5	3
Vermont	102	19	18.6	0	14	26	25	26	4	3	1	3
Virginia	1,087	126	11.6	3	141	315	369	150	38	22	14	18
Washington	708	86	12.1	1	71	228	237	100	21	18	17	9
West Virginia	479	66	13.8	2	41	141	164	77	17	13	11	7
Wisconsin	855	111	13.0	5	109	251	283	119	27	25	15	16
Wyoming	187	18	9.6	1	19	60	70	26	7	3	1	0
<b>U.S. Total</b>	<b>50,186</b>	<b>5,569</b>	<b>11.1</b>	<b>213</b>	<b>5,729</b>	<b>15,057</b>	<b>17,075</b>	<b>7,287</b>	<b>1,321</b>	<b>1,116</b>	<b>858</b>	<b>682</b>
Puerto Rico	535	47	8.8	4	51	193	176	50	18	7	7	0

\*Includes drivers of unknown age. U.S. had 848 drivers of unknown age.

Table 5  
**Fatalities in Traffic Crashes by State and Age Group, 2008**

State	Total*	Total 65+	Percentage of Total	Age Group (Years)								
				<16	16-20	21-34	35-54	55-69	70-74	75-79	80-84	85+
Alabama	966	87	9.0	40	133	279	316	127	21	28	9	13
Alaska	62	10	16.1	5	12	18	13	9	3	1	0	1
Arizona	937	135	14.4	41	103	251	282	155	32	29	19	22
Arkansas	600	82	13.7	30	81	159	171	100	23	13	15	8
California	3,434	489	14.2	159	399	1,016	991	495	91	105	80	93
Colorado	548	92	16.8	31	65	140	171	79	16	15	13	18
Connecticut	264	48	18.2	9	29	78	73	32	10	11	14	7
Delaware	121	19	15.7	7	8	37	38	16	3	9	3	0
District of Columbia	34	10	29.4	0	3	8	9	8	1	2	0	3
Florida	2,978	447	15.0	86	335	827	951	420	94	93	77	85
Georgia	1,493	210	14.1	72	154	418	447	246	47	40	29	33
Hawaii	107	21	19.6	2	11	28	31	21	1	4	6	3
Idaho	232	27	11.6	12	35	59	70	36	13	2	3	2
Illinois	1,043	157	15.1	51	121	309	313	115	40	26	28	40
Indiana	814	99	12.2	44	125	225	230	116	15	27	14	16
Iowa	412	73	17.7	17	46	99	121	69	16	12	17	14
Kansas	385	61	15.8	20	48	100	112	54	18	11	9	12
Kentucky	826	106	12.8	30	95	225	283	106	31	20	22	13
Louisiana	912	93	10.2	51	103	304	278	107	19	24	18	8
Maine	155	33	21.3	5	15	25	50	32	5	10	5	8
Maryland	591	83	14.0	27	71	176	187	53	21	20	14	20
Massachusetts	363	74	20.4	7	55	92	93	53	9	14	16	24
Michigan	980	188	19.2	43	116	213	295	164	36	44	38	31
Minnesota	456	87	19.1	29	46	123	112	74	20	16	13	23
Mississippi	783	99	12.6	42	84	205	268	110	31	17	13	13
Missouri	960	160	16.7	47	136	240	287	126	36	29	31	28
Montana	229	29	12.7	12	29	68	67	32	6	2	6	7
Nebraska	208	42	20.2	12	33	48	52	27	11	4	11	10
Nevada	324	46	14.2	17	28	93	93	60	9	13	6	5
New Hampshire	139	27	19.4	4	20	30	47	18	7	6	3	4
New Jersey	590	114	19.3	24	68	165	159	94	12	18	25	25
New Mexico	366	52	14.2	17	35	108	111	56	12	10	13	4
New York	1,231	284	23.1	46	117	329	306	192	53	62	62	53
North Carolina	1,433	202	14.1	53	189	390	442	190	51	54	31	29
North Dakota	104	14	13.5	5	12	32	34	9	2	1	4	5
Ohio	1,190	186	15.6	62	132	293	368	192	39	36	37	31
Oklahoma	749	110	14.7	34	115	186	223	111	25	21	15	18
Oregon	416	58	13.9	19	43	110	123	76	11	12	11	11
Pennsylvania	1,468	258	17.6	35	183	427	401	211	55	53	56	46
Rhode Island	65	17	26.2	0	8	19	17	6	1	3	4	7
South Carolina	920	117	12.7	34	124	261	296	115	27	26	19	15
South Dakota	119	23	19.3	6	13	36	26	23	3	4	3	5
Tennessee	1,035	156	15.1	43	125	262	342	146	32	27	36	22
Texas	3,382	358	10.6	178	443	1,018	1,041	421	85	71	57	48
Utah	275	39	14.2	33	26	81	82	27	7	8	8	3
Vermont	73	13	17.8	1	15	15	15	17	0	4	1	5
Virginia	824	107	13.0	31	123	220	251	111	29	24	12	19
Washington	521	92	17.7	14	50	161	149	71	21	11	23	21
West Virginia	380	69	18.2	10	45	106	111	56	16	13	12	9
Wisconsin	605	113	18.7	30	75	152	166	97	27	21	18	19
Wyoming	159	17	10.7	6	17	55	50	20	6	4	1	0
<b>U.S. Total</b>	<b>37,261</b>	<b>5,533</b>	<b>14.8</b>	<b>1,633</b>	<b>4,497</b>	<b>10,319</b>	<b>11,164</b>	<b>5,301</b>	<b>1,199</b>	<b>1,130</b>	<b>980</b>	<b>959</b>
Puerto Rico	399	68	17.0	19	42	108	123	58	13	6	13	8

\*Total includes fatalities of unknown age. U.S. had 79 fatalities of unknown age.