



Operation of a Remote PIT Tag Antenna Array in the Little Colorado River

Summary of results through Fall 2011

Bill Persons

Grand Canyon Monitoring and Research Center

wpersons@usgs.gov

- How can native and nonnative fishes best be monitored while minimizing impacts from capture and handling.



Number of times fish were PIT tagged and/or recaptured in LCR

Species Code	134.2 kHz only	400 kHz only	134.2 and 400 kHz	Total
missing		1		1
BBH	2			2
BHS	6,898	5,461	34	12,393
CCF	11	1		12
CRP	153	1		154
FMS	5,975	5,591	1,082	12,648
FRH	1	12		13
HBC	26,809	29,359	9,548	65,716
RBS		35	8	43
Total	39,849	40,461	10,672	90,982

Year	134.2 kHz only	400 kHz only	134.2 and 400 kHz	Total
1989	-	523	30	553
1990	-	518	44	562
1991	-	4,913	482	5,395
1992	-	6,521	962	7,483
1993	-	8,185	984	9,169
1994	-	5,481	600	6,081
1995	-	3,267	776	4,043
1996	-	357	82	439
1997	-	263	90	353
1998	-	497	72	569
1999	-	596	150	746
2000	-	1,285	100	1,385
2001	-	4,469	756	5,225
2002	-	3,209	1,676	4,885
2003	2,425	345	840	3,610
2004	1,997	25	744	2,766
2005	2,257	2	366	2,625
2006	4,391	1	672	5,064
2007	6,466	-	478	6,944
2008	7,122	2	338	7,462
2009	10,011	1	260	10,272
2010**	5,180	1	170	5,351
Total	39,849	40,461	10,672	90,982



Colorado River

Relay Station

LCR

PIT Tag Antenna

© 2011 Google
Image © 2011 DigitalGlobe
Image U.S. Geological Survey

Google earth

Imagery Date: 5/6/2002

36°11'52.82" N 111°46'10.17" W elev 3014 ft

Eye alt 42887 ft



Multiplexer (MUX) 2009-2011

- Multiplexer system installed May 2, 2009
 - (Multiplex = combining many signals into a single transmission circuit or channel) = MUX
 - 2009: Six 20' x 2' antennas
 - 2011: Four 20' x 2' + Four 10' x 2'



Antenna Array 2011





May 2011 Maintenance and Installation





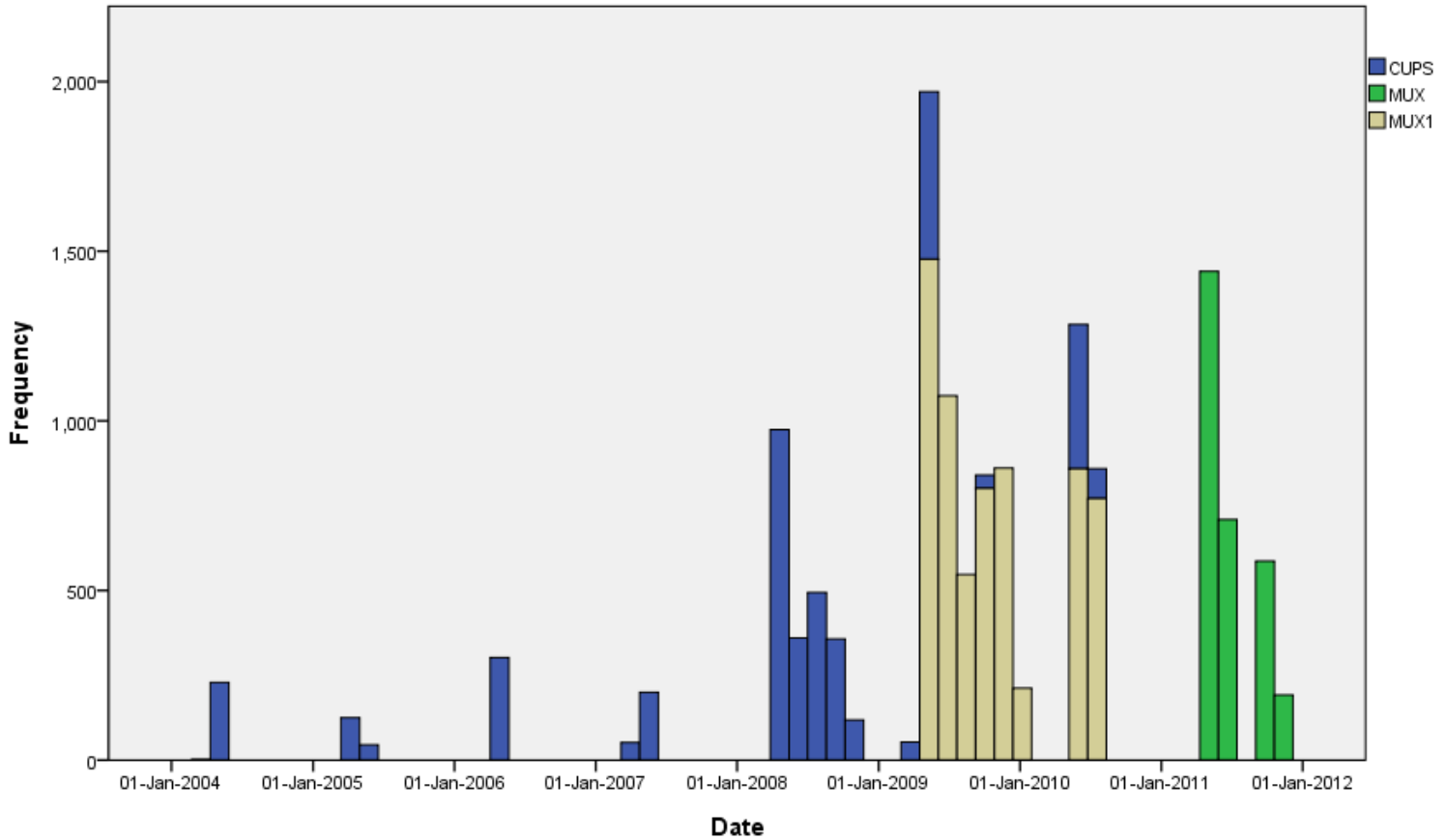
May 2011 base flow ~212 cfs



May 2011 base flow ~212 cfs



Number of unique fish detected per antenna per day

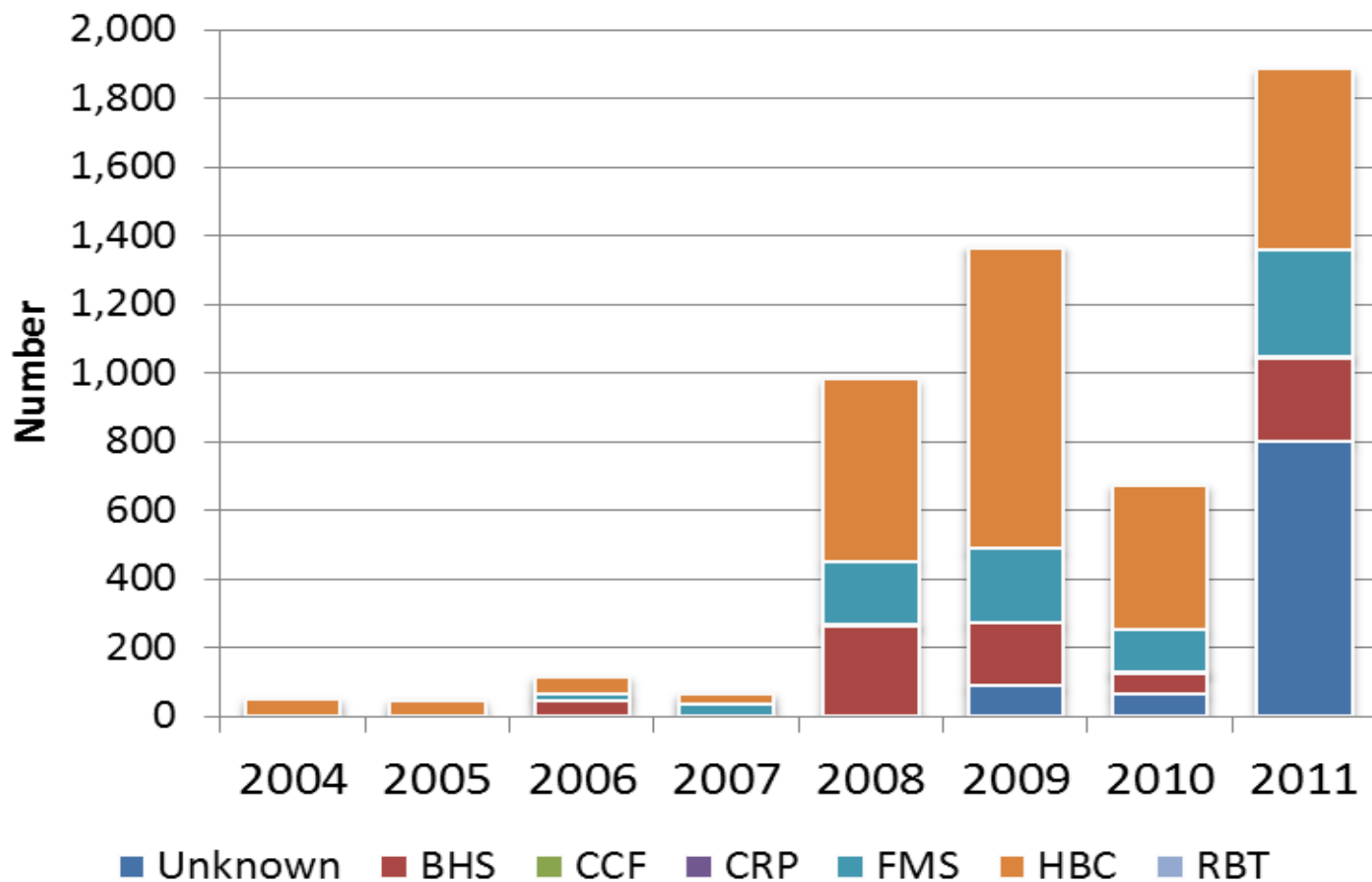


Number of **unique** fish detected, all PIT Antennas, LCR 2004-2011

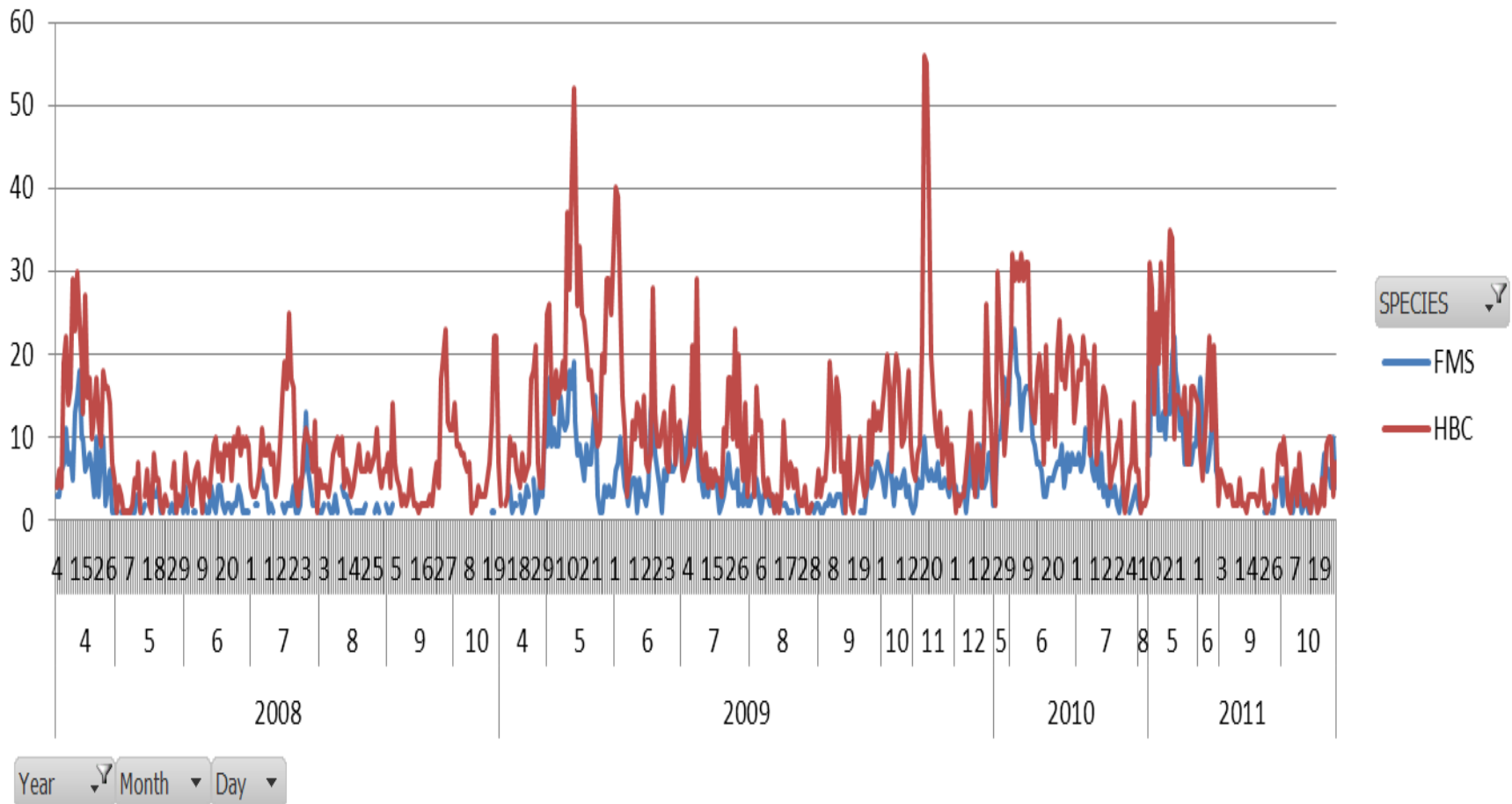
- 5,176 unique PIT tagged fish, 38,859 detections

Species	Detected	(%)
Humpback chub	2,527	49
Unknown	964	19
Flannelmouth sucker	888	17
Bluehead sucker	788	15
Common carp	6	< 1
Channel catfish	2	< 1
Rainbow trout	1	< 1
Total	5,176	

Number of unique fish detected



Count of SITE



■ WHAT WORKED

- 2009 - 2011 Power plant and MUX with lapses
- Detected >5,600 unique fish
- Modified antenna configuration to better span entire channel in 2011
- Remote access relay station built and tested
- Camera installed
- Colorado Coop Unit / CSU Graduate student started 2011

■ WHAT DID NOT WORK

- Unable to install second downstream antenna array





Remote relay station 2011

Acknowledgements

- **USGS CRRL: Patrick Connolly, Ian Jezorek, Cari Mausling,**
- **GCMRC: Tim Andrews, Glenn Bennett, Tim Dealy, Dave Foster, Seth Felder, Ron Griffiths, Tom Gushue, Tom Sabol, Bob Tusso**
- **CSU: Dana Winkelman, Kristen Pearson**