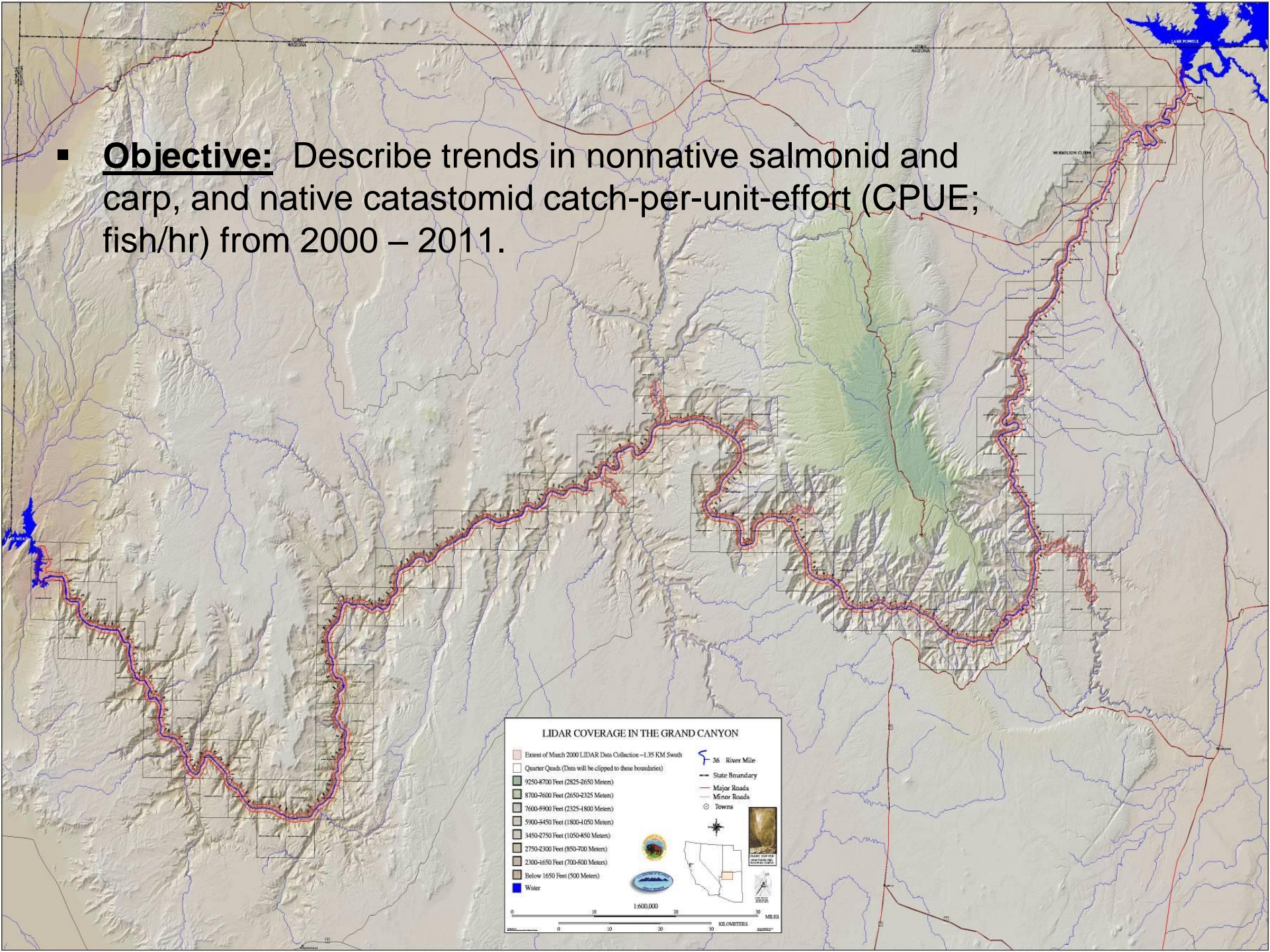


Grand Canyon Fish Community Monitoring: 2011 Results

CRABS Meeting
1-12-2012



- **Objective:** Describe trends in nonnative salmonid and carp, and native catostomid catch-per-unit-effort (CPUE; fish/hr) from 2000 – 2011.



Methods: Field sampling



- One trip conducted in May
- Random sampling from Lees Ferry to Pearce Ferry
- 708 transects averaging 326 seconds each over 25 nights
- Electrofishing occurs along shorelines using 2 boats working simultaneously at night
- Data attained: Species ID, TL (all species) & FL (natives only; mm), Wt (g), and tag returns (i.e., Floy, PIT, and/or fin-clips)



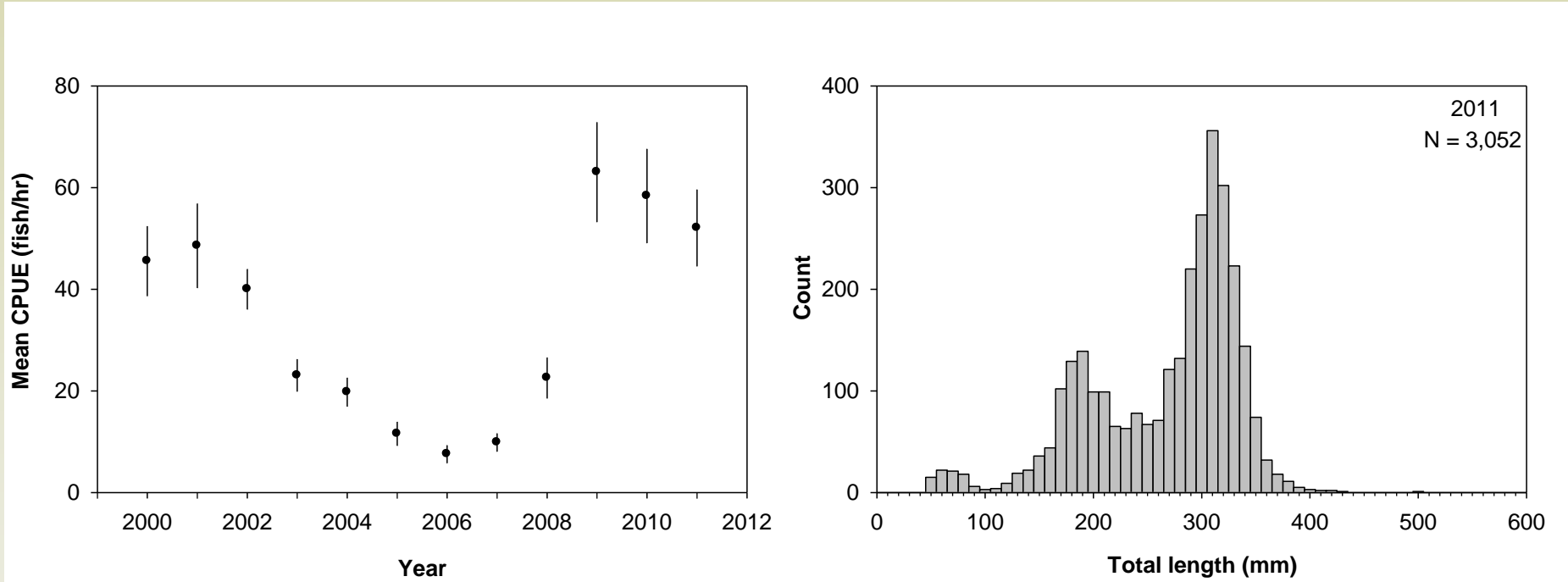


Table 1. Sampling information and species composition data collected during the 2011 Arizona Game and Fish Department long-term monitoring trip.
[L, low; H, high]

Sampling date	Number of samples	Start river mile	End river mile	Reach	Average seconds	Turbidity	Bluehead sucker	Brown trout	Channel catfish	Common carp	Fathead minnow	Flannemouth sucker	Humpback chub	Plains killifish	Rainbow trout	Red shiner	Speckled dace	Striped bass	Unidentified sucker
5/7/2011	30	1.81	2.97	1	333	L	0	0	0	0	0	4	0	0	660	0	0	0	0
5/9/2011	30	32.46	34.48	1	320	L	0	1	0	0	0	1	0	0	780	0	0	0	0
5/10/2011	30	57.11	58.68	2	329	L	1	1	0	0	0	14	0	0	645	0	0	0	0
5/11/2011	30	58.70	63.34	2	357	L	6	1	0	1	15	20	3	0	235	0	0	0	0
5/12/2011	30	62.94	65.73	2	366	L	11	1	0	3	15	31	7	0	90	0	3	1	0
5/13/2011	30	70.81	72.79	3	310	L	7	0	0	4	17	42	0	0	61	0	4	0	0
5/14/2011	30	82.43	84.47	3	344	L	2	29	0	0	0	8	0	0	18	0	1	0	0
5/15/2011	30	85.43	86.92	3	331	L	6	114	0	3	1	9	0	0	33	0	0	0	0
5/16/2011	30	87.44	89.86	3	330	L	0	185	0	16	0	45	0	0	94	0	0	0	0
5/18/2011	30	106.95	108.24	3	314	L	2	15	0	14	0	6	0	0	24	0	0	0	0
5/19/2011	13	115.10	115.62	4	319	L	0	2	0	12	0	22	0	0	7	0	0	0	0
5/20/2011	30	118.30	120.22	4	322	L	2	10	0	21	3	18	0	0	68	0	1	0	0
5/21/2011	30	144.76	146.75	4	327	L	7	7	0	6	0	35	0	0	103	0	3	0	0
5/22/2011	30	157.56	160.13	4	313	L	8	6	0	13	1	102	1	0	108	0	25	0	0
5/23/2011	30	167.31	168.98	4	309	L	10	12	0	5	0	84	0	0	81	0	43	0	0
5/24/2011	30	190.87	192.73	5	316	L	4	9	0	2	4	214	0	0	10	2	78	0	0
5/25/2011	30	193.70	195.65	5	316	L	11	12	0	11	0	250	0	0	18	0	99	0	0
5/26/2011	30	206.47	208.44	5	317	L	7	9	0	10	6	342	0	0	9	0	118	0	0
5/27/2011	30	221.01	223.39	5	326	L	12	4	1	6	8	606	0	0	1	0	250	0	0
5/28/2011	24	228.78	230.51	5	321	L	15	1	0	1	0	201	0	0	5	0	72	0	0
5/29/2011	24	239.51	241.04	5	320	L	6	1	0	0	7	261	1	0	0	24	33	0	1
5/30/2011	23	247.10	248.85	5	323	L	17	0	0	1	17	405	0	0	1	60	138	0	0
5/31/2011	24	258.30	261.21	5	329	L	26	0	0	0	25	552	0	2	1	17	274	0	0
Total							160	420	1	129	119	3,272	12	2	3,052	103	1,142	1	1

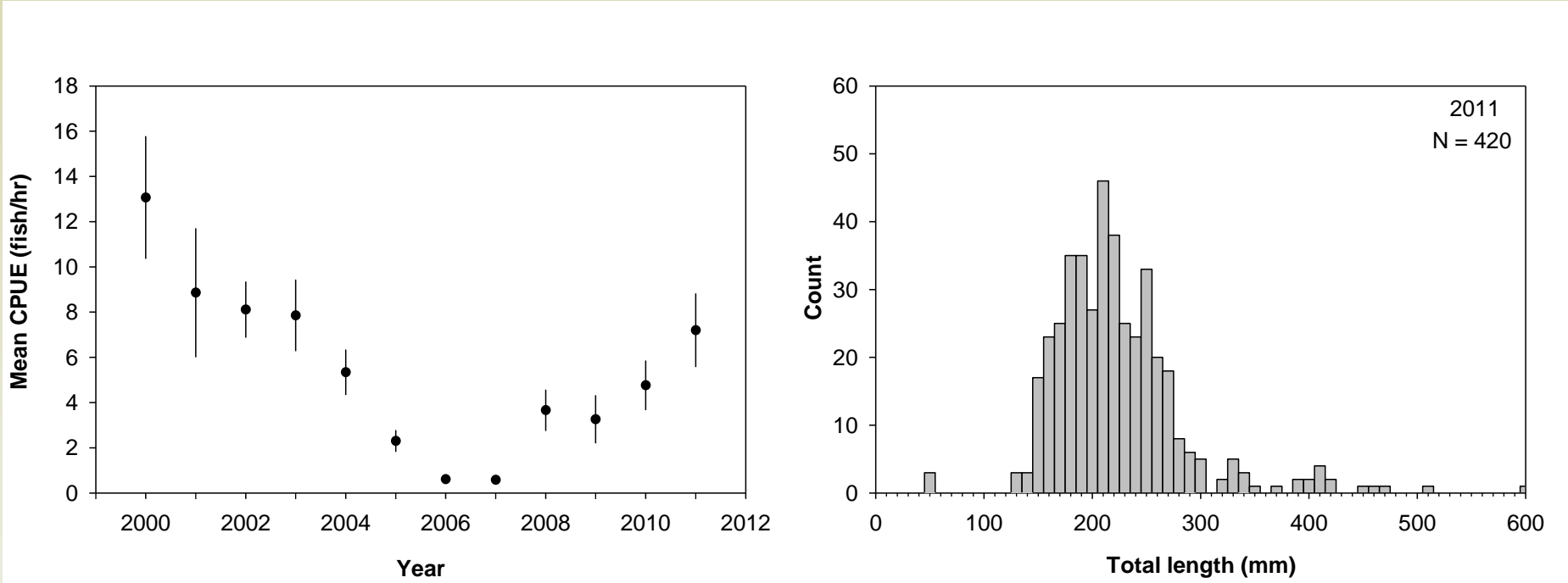


Rainbow trout



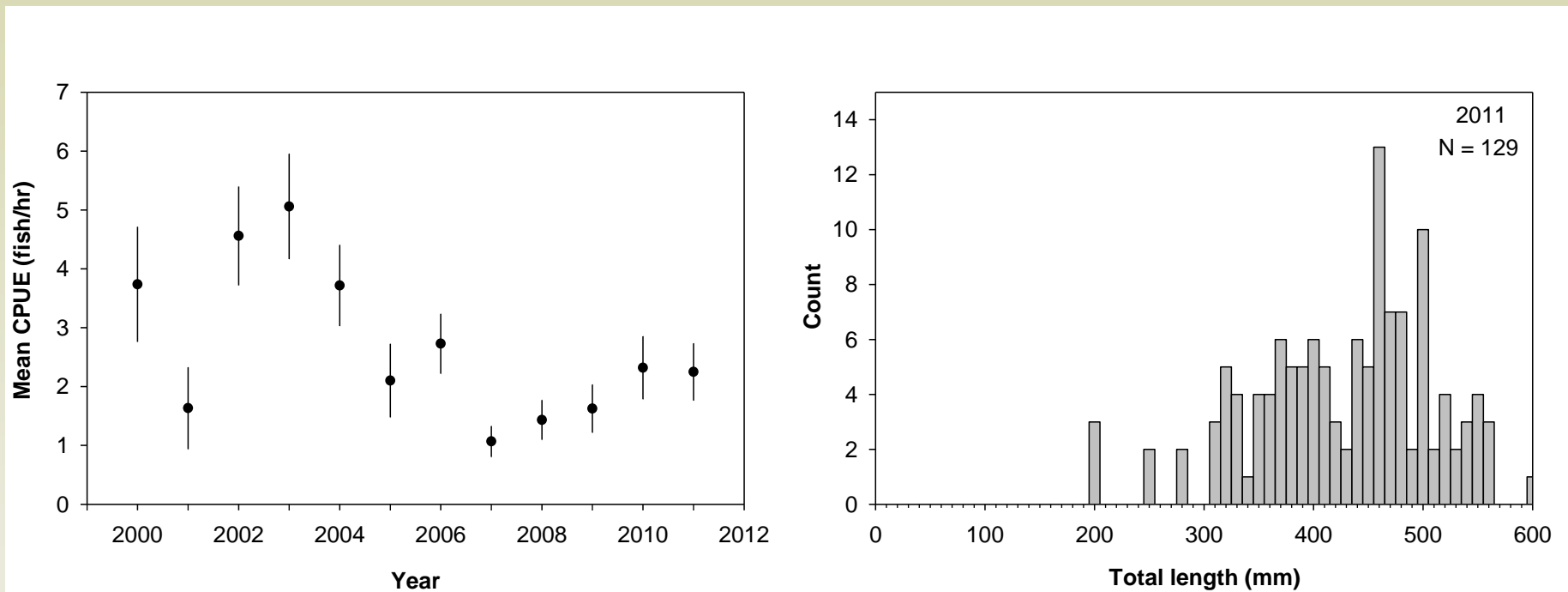


Brown trout



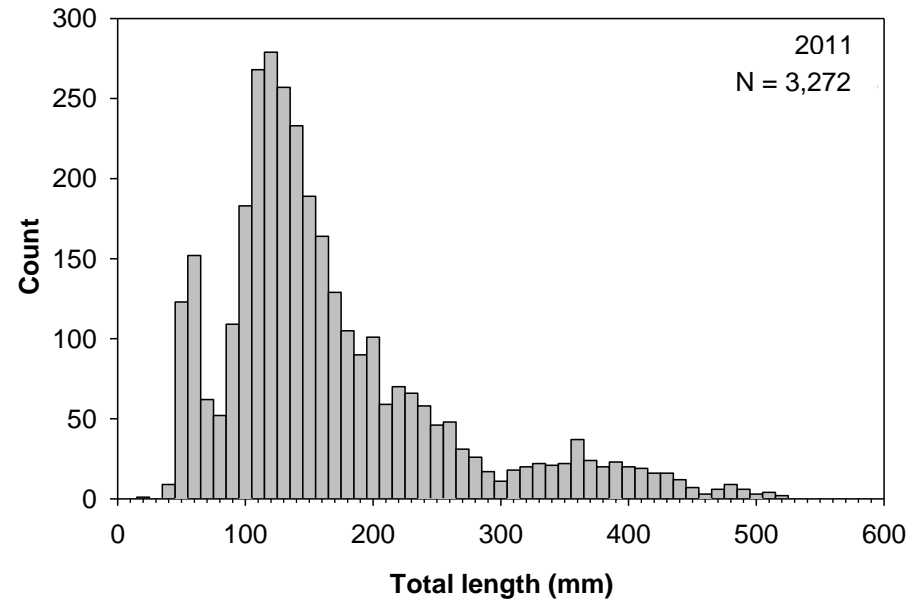
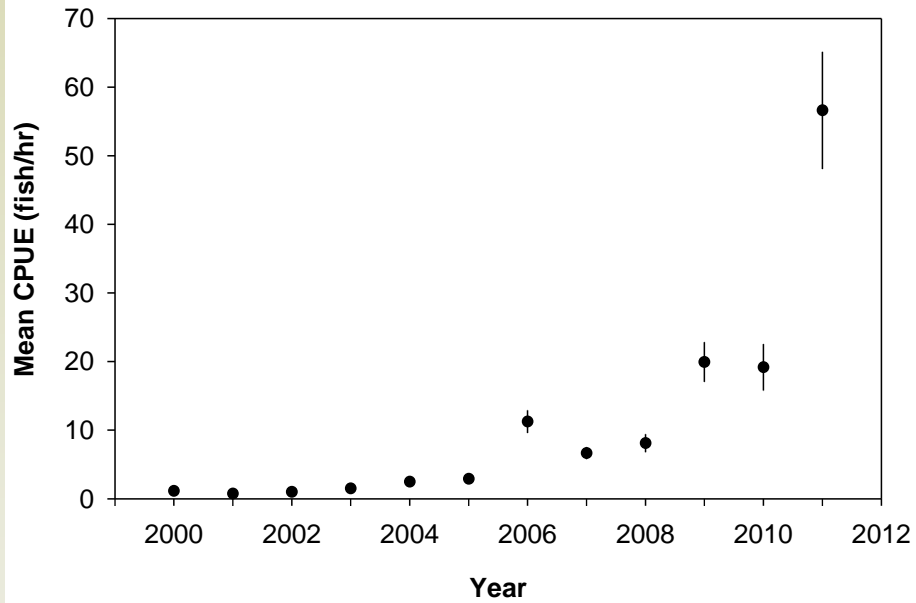


Common carp



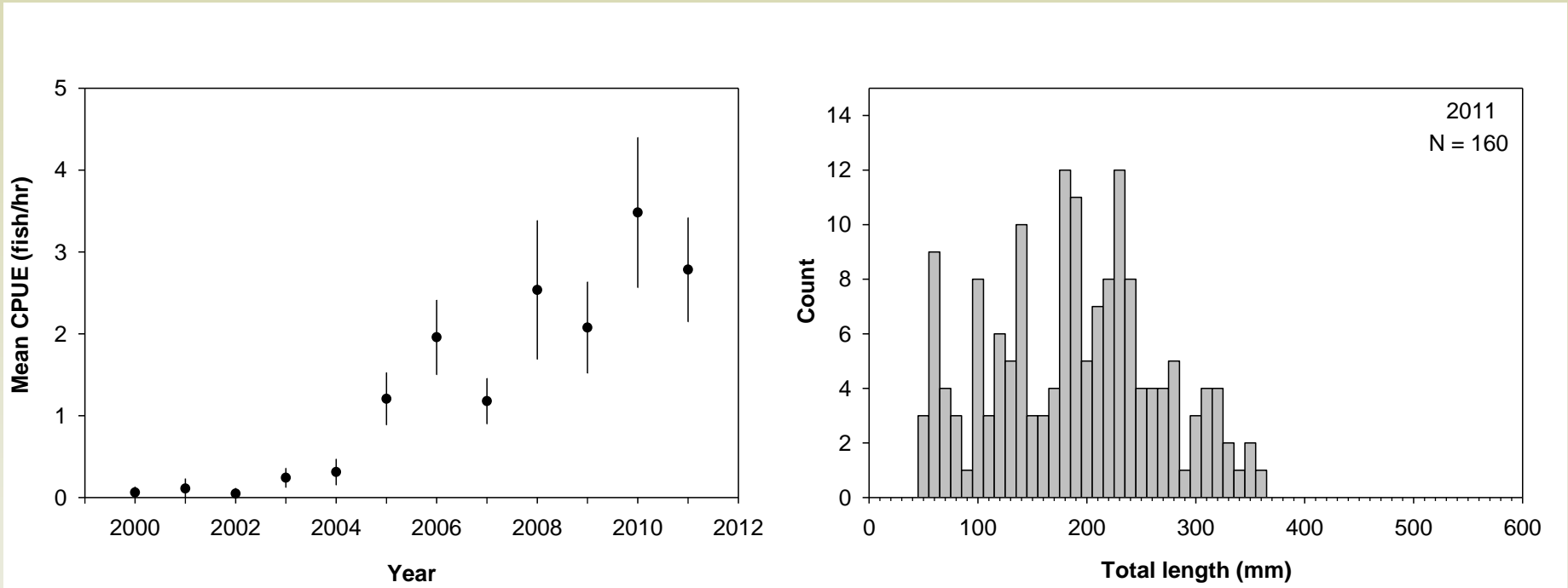


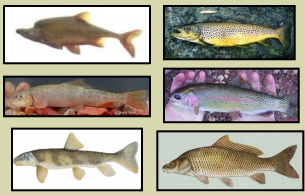
Flannelmouth sucker





Bluehead sucker





Questions?



- Feel free to contact Aaron Bunch, ABunch@azgfd.gov for more specifics on the project.