

Nevada Department of Wildlife

Lake Mead

C.R.A.B.

January 12-13, 2011

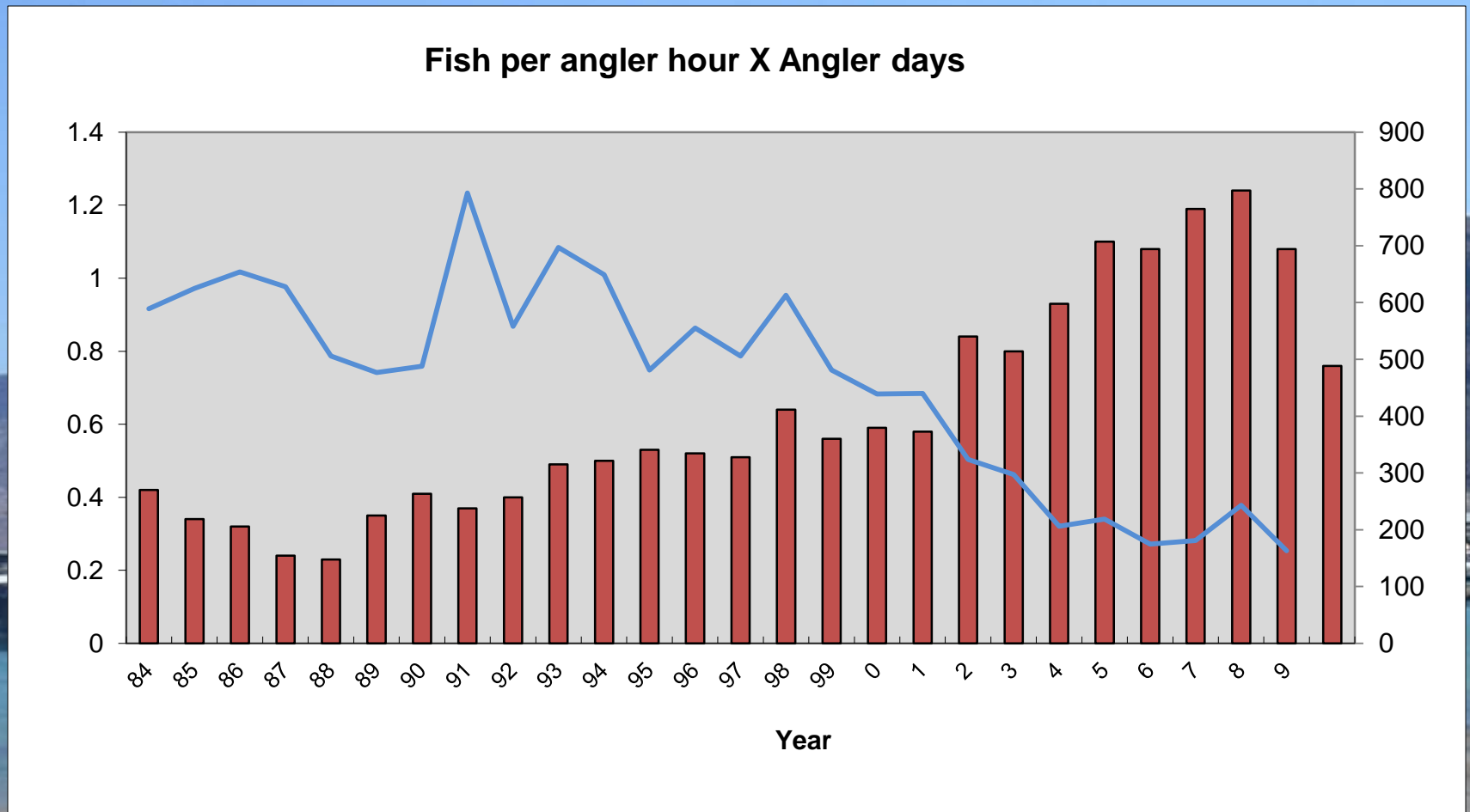
Laughlin, NV



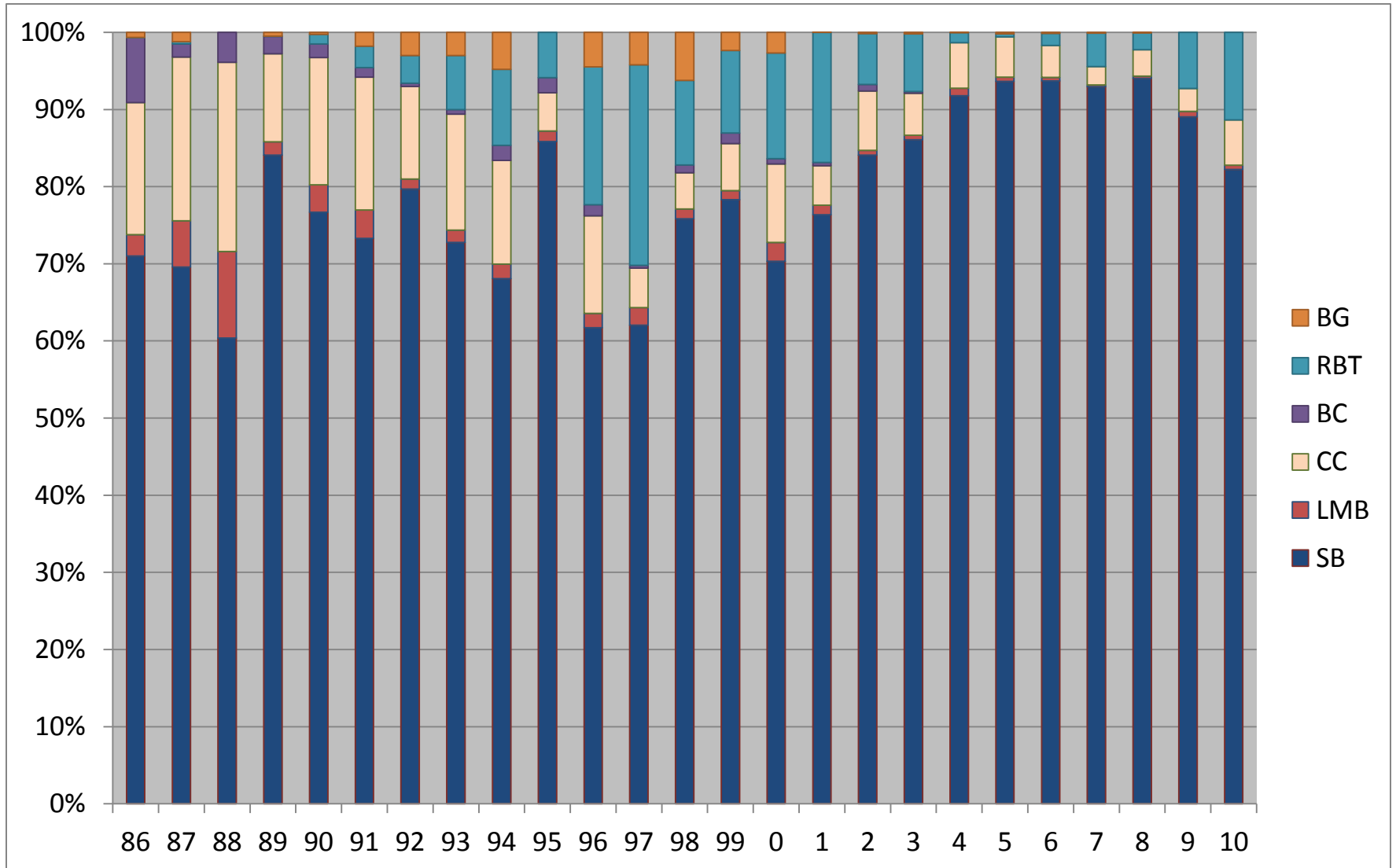
Creel Census

- Catch rates down in 2010

Average 0.8 fish per angler hour



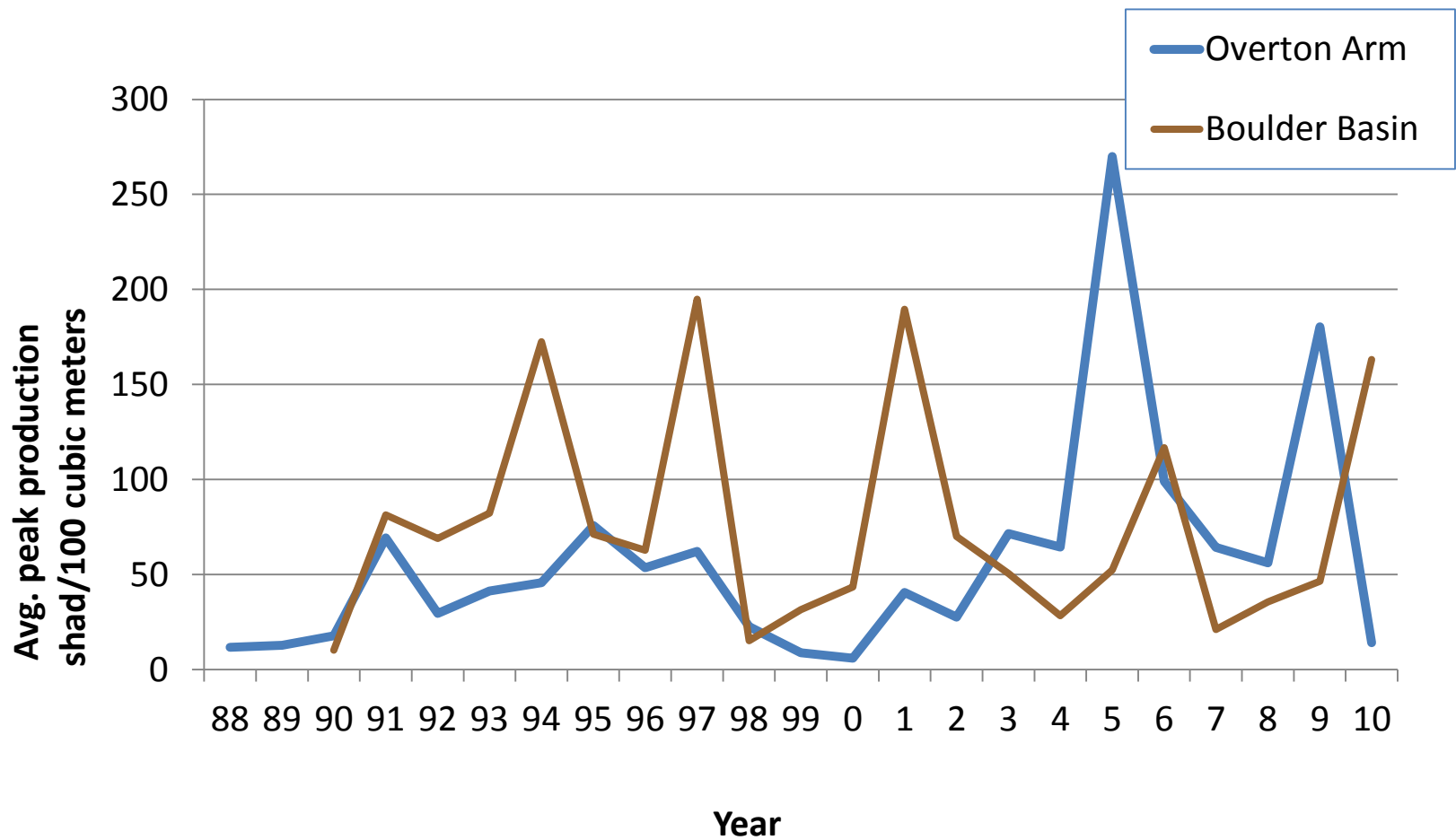
Creel harvest Species percentage



Threadfin shad

- Peak production in Las Vegas Bay at 163 shad /100 m³
- Poor production Overton this year at 14 shad / 100 m³
- Unable to distinguish threadfin from gizzard shad at this size

Shad production by year

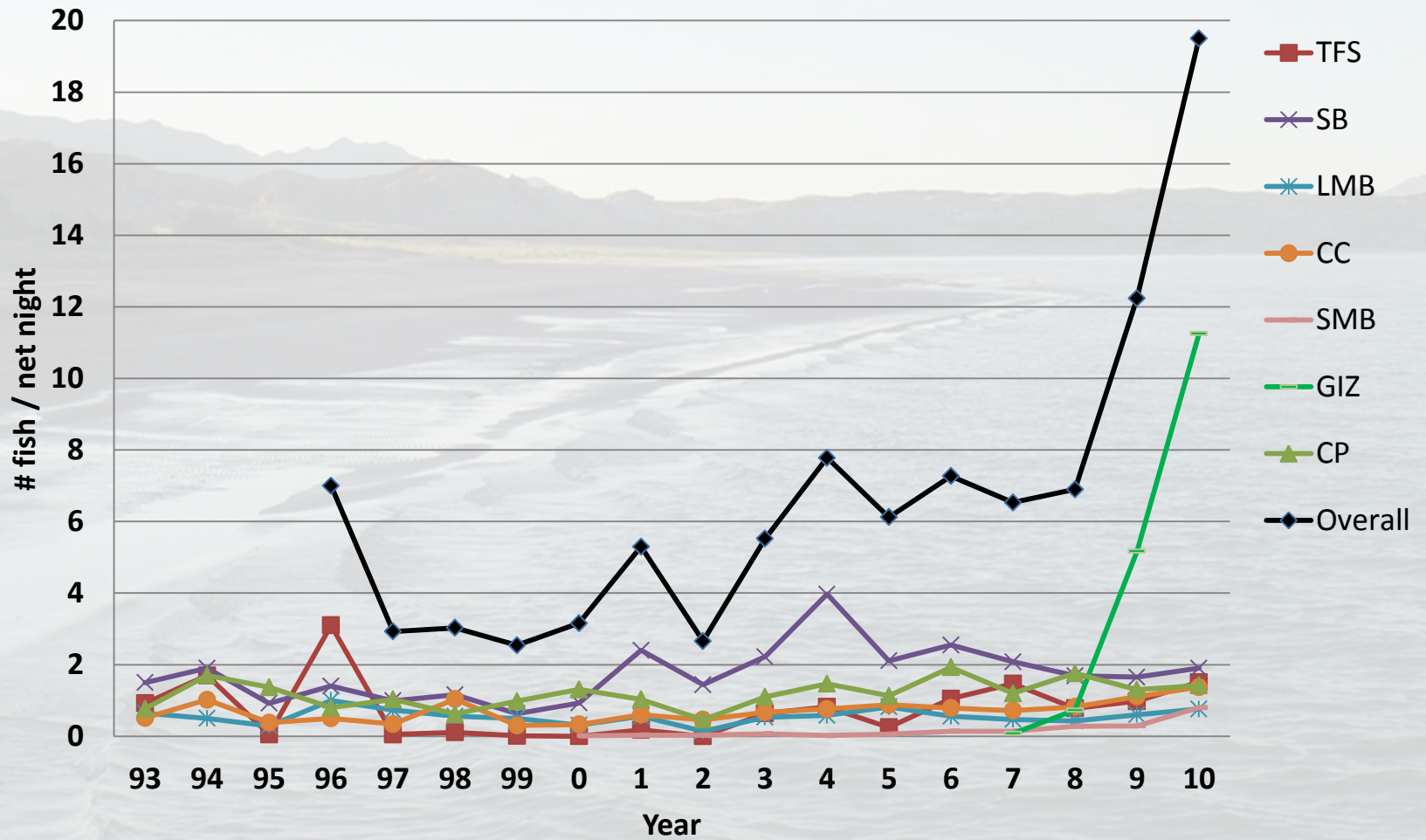


Fall gill nets

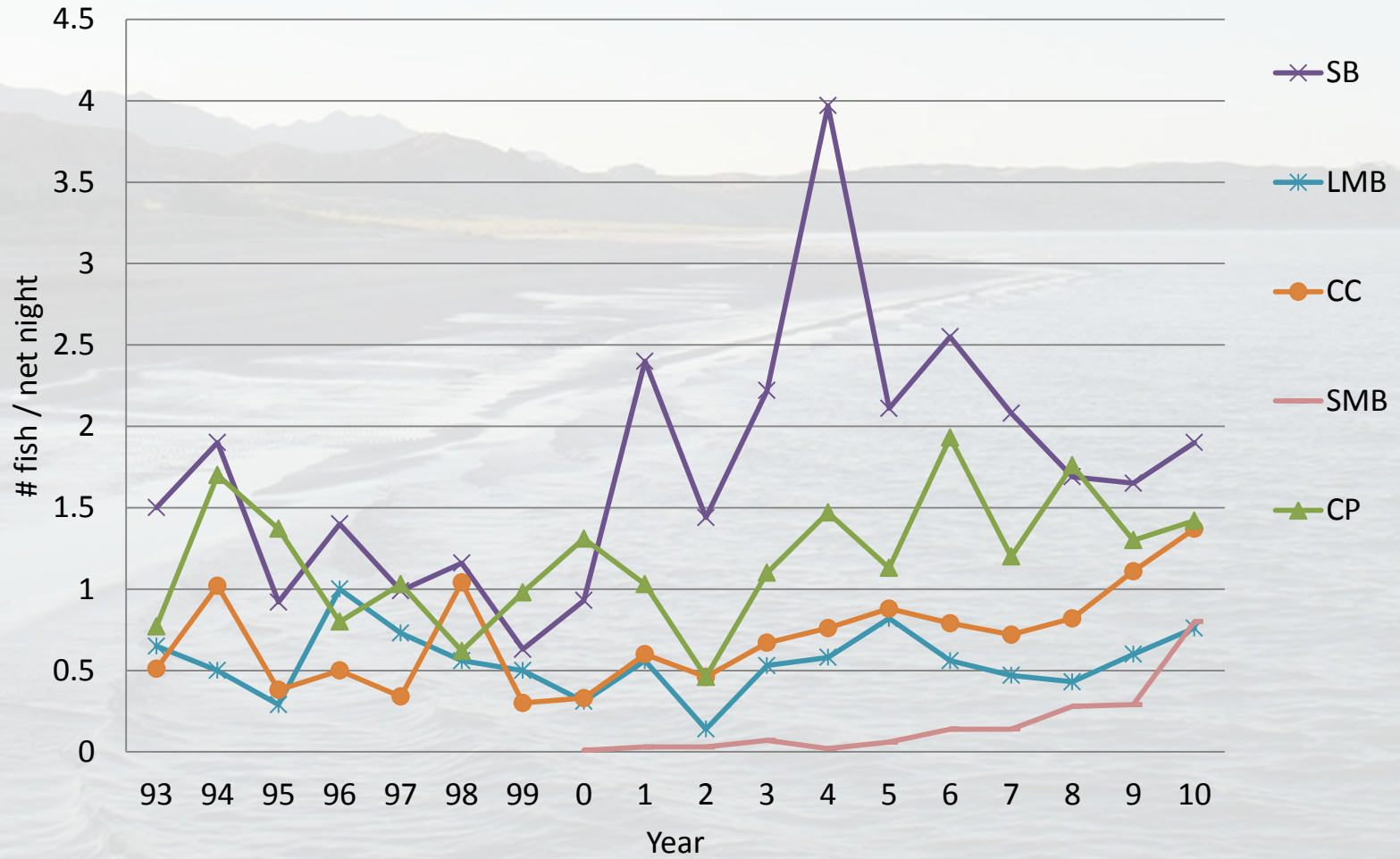
- Multi-agency effort
 - NDOW, AZGFD, BOR, NPS
- 78 nets, 136 net nights of effort
- A record 2,656 fish at
19.5 fish per net night



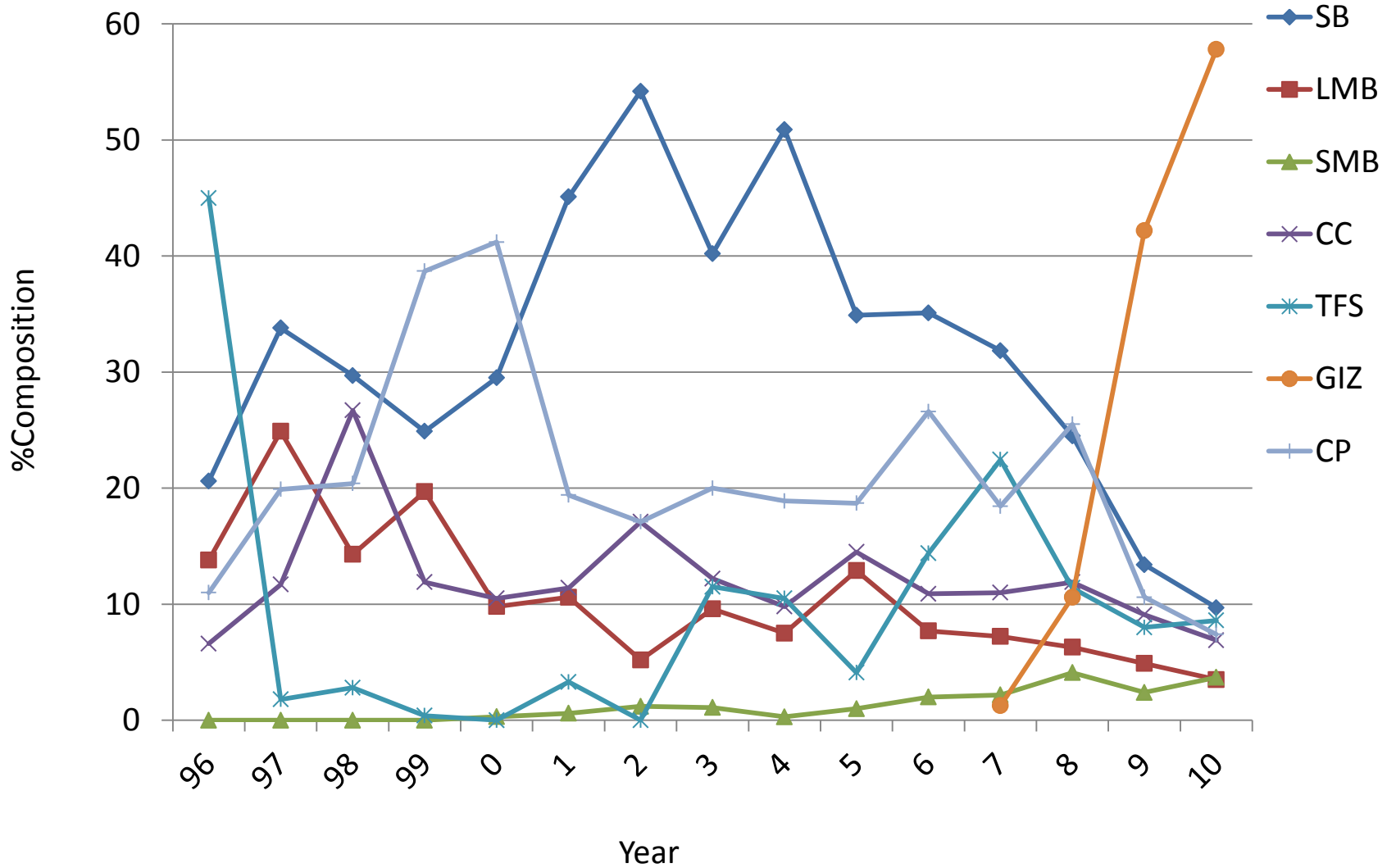
Gill net CPUE



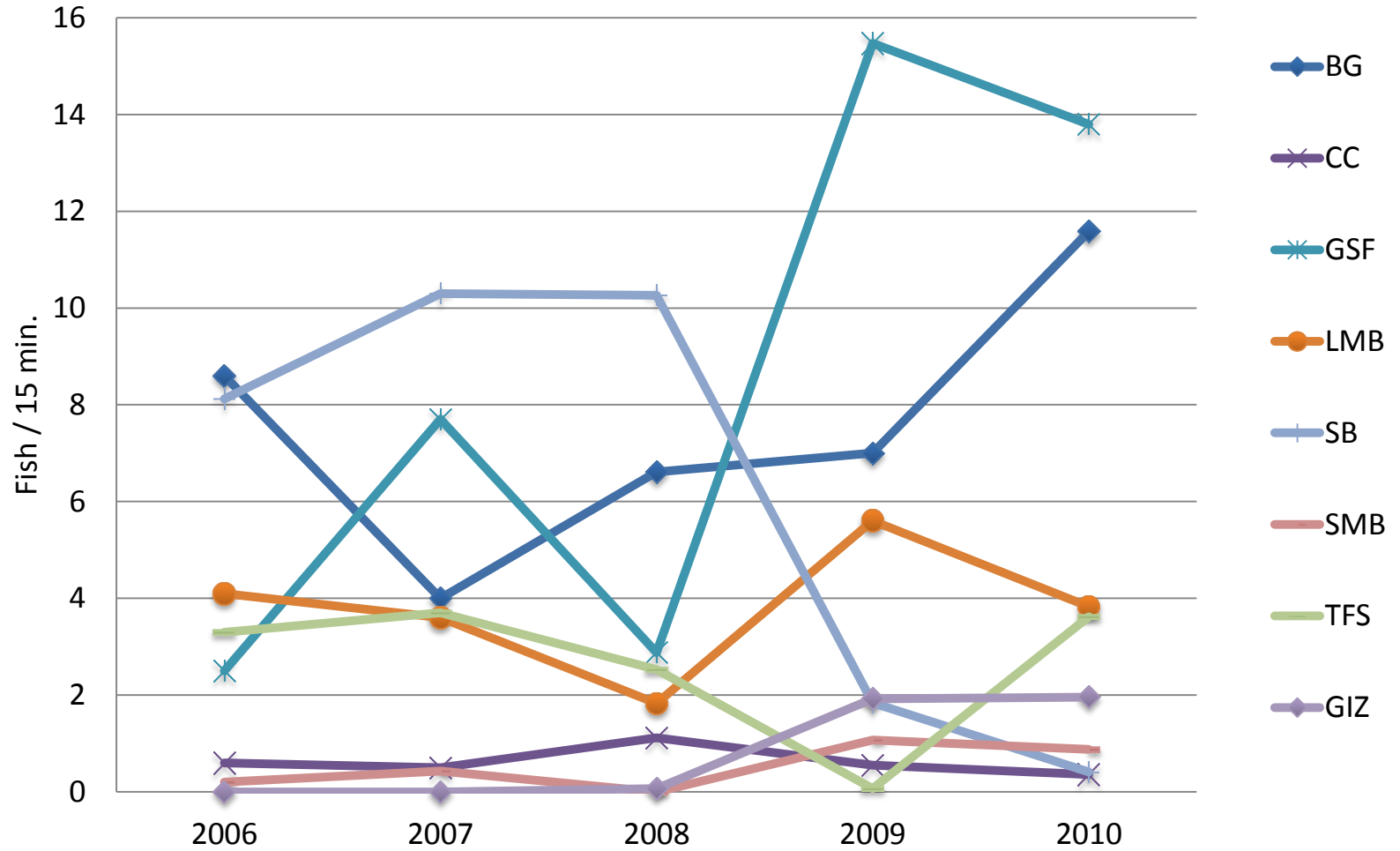
Gill net CPUE



Species Composition



Electroshocking CPUE, 2006-2010

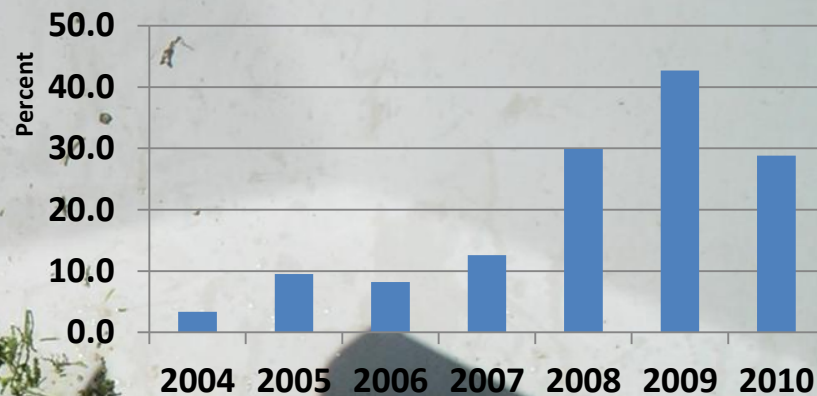


Black bass fishery monitoring

- Collect catch data from fishing tournaments
 - 33 LMB tournaments held on Lake Mead in 2010 (23 last year).
- Summertime snorkel surveys

Black Bass fishery monitoring

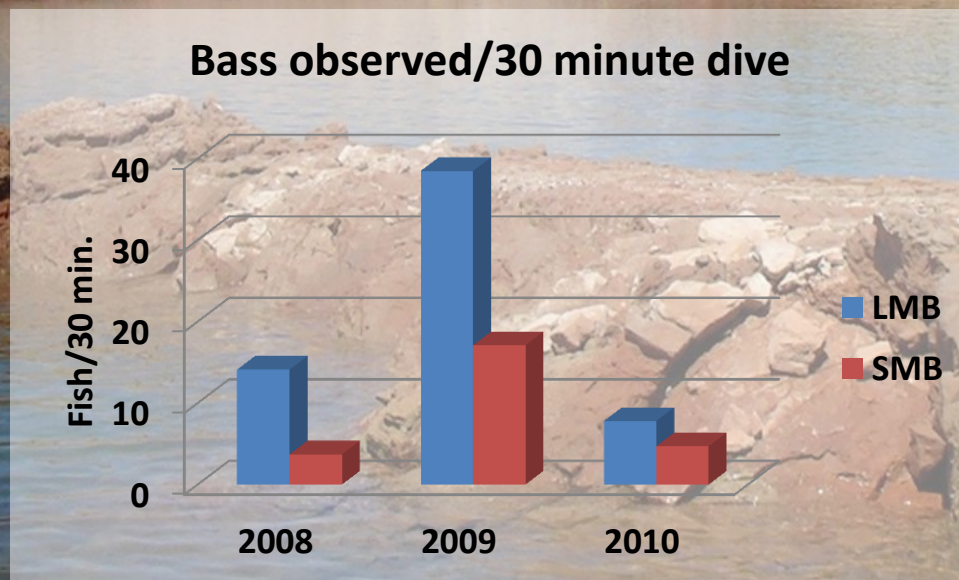
SMB average percent



- Largemouth bass
 - Average 16 inches, 2.1 lb.
 - (2009 - 15.3 inches, 1.8 pounds)
- Smallmouth bass
 - Average 15.2 inches, 1.7 lb.
 - (2009 - 14.8 inches, 1.6 pounds)

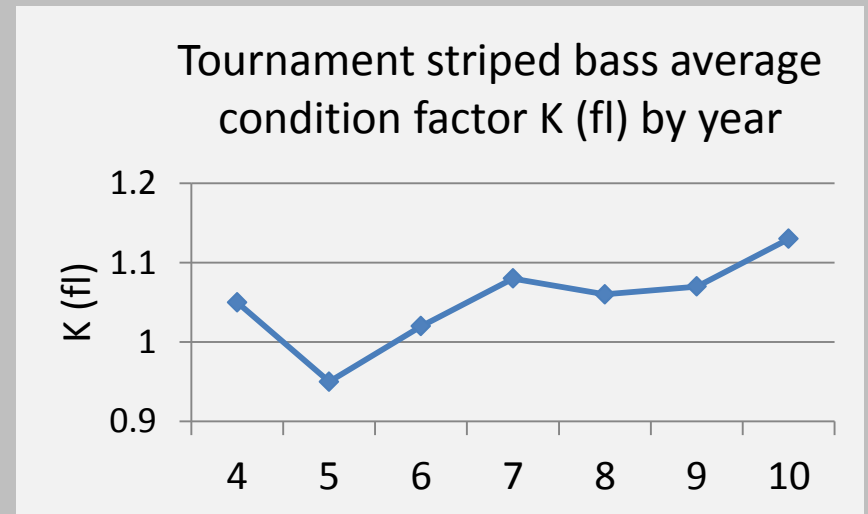
Snorkel surveys

- 2010 – fewer largemouth and smallmouth observed
- 5-foot drop in lake elevation May-June

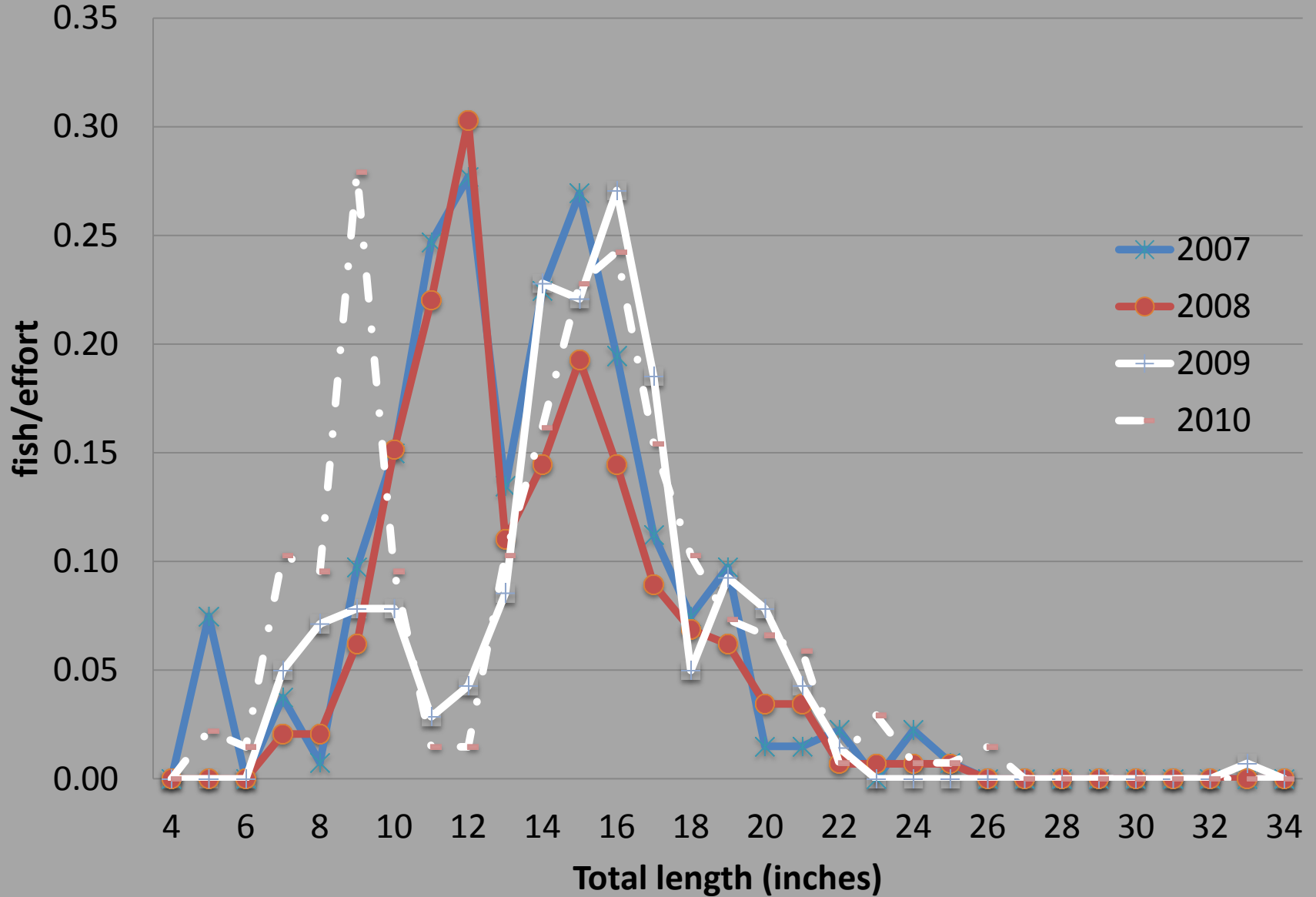


Striped bass tournaments

- 2010
 - Average 18.5 inches TL,
2.4 lbs.
 - Average K (fl) 1.13
- 2009
 - Average 19.5 inches TL,
2.4 lbs.
 - Average K (fl) 1.08

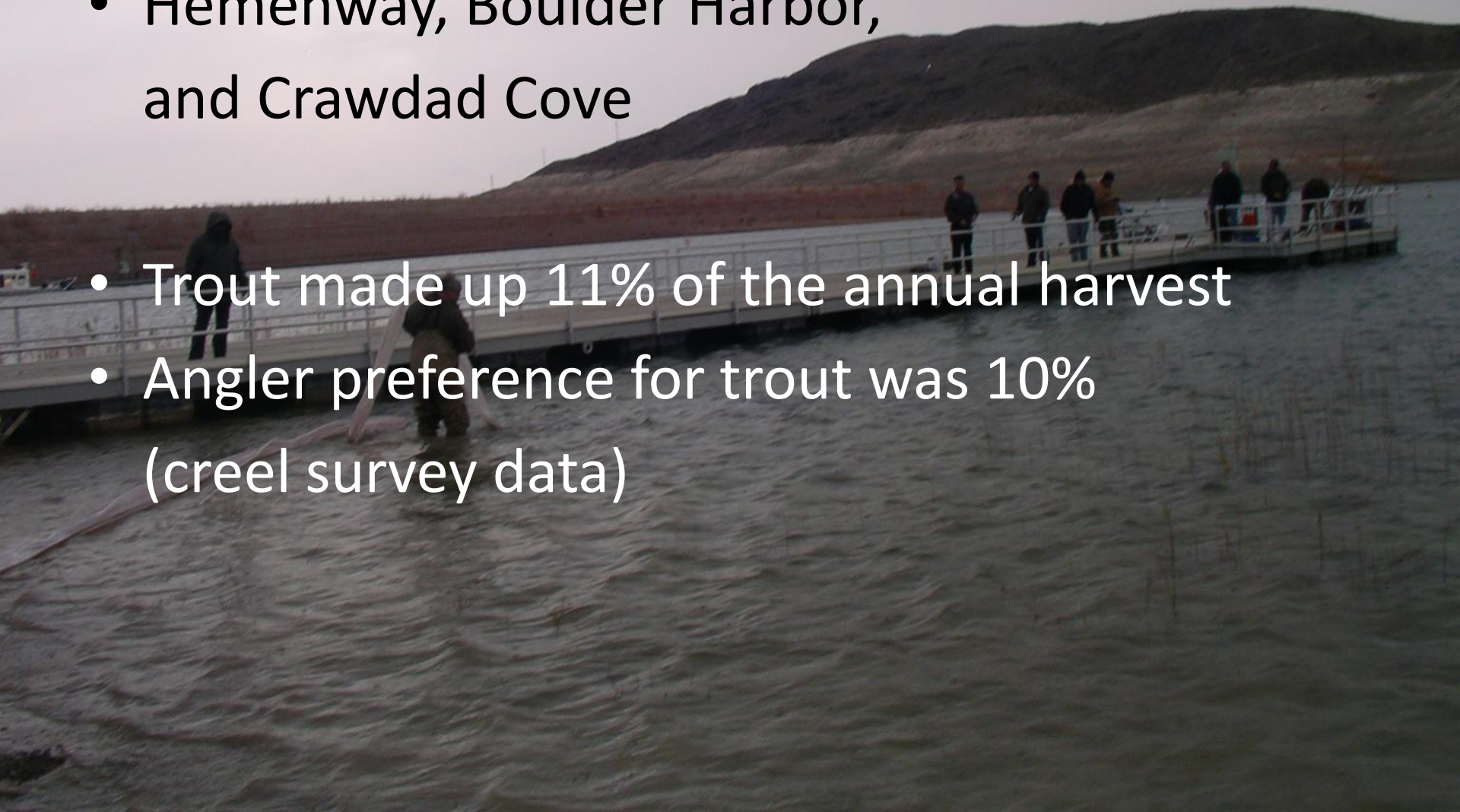


Striped bass length frequency, 2007-2010



Trout stocking

- 57,268 trout stocked in 2010
- Hemenway, Boulder Harbor, and Crawdad Cove
- Trout made up 11% of the annual harvest
- Angler preference for trout was 10% (creel survey data)



Summary

- Angler catch rates have declined
- Increase in smallmouth bass abundance
- Poor year for black bass dive counts
- Striped bass condition improved
- Slow growth rates for young stripers
- Few stripers seen in electrofishing sample
- Increase in green sunfish & bluegill