



Four types of events have been the most frequent since the workplace fatality census began.

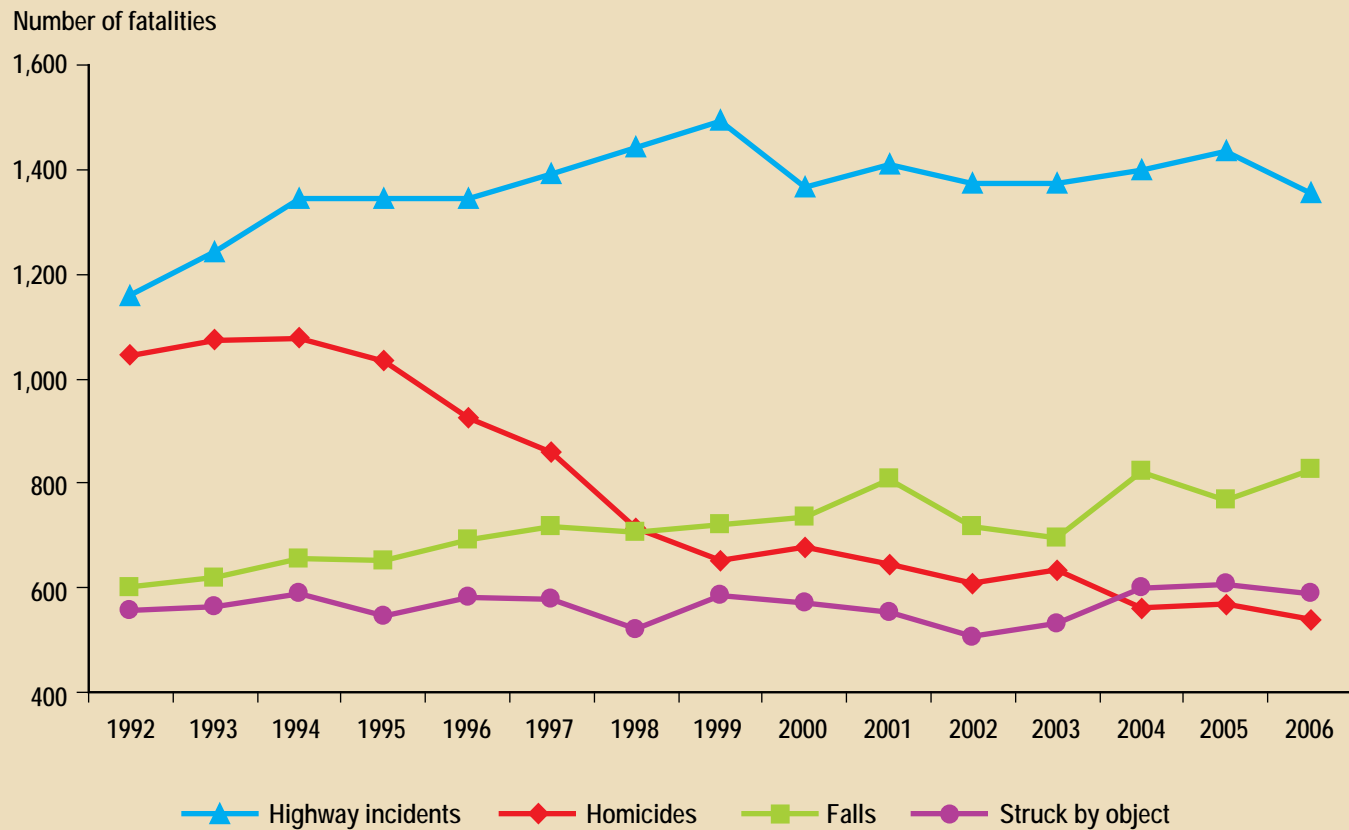
Highway incidents have been the leading event since 1992.

Workplace homicides have declined substantially since 1994, while falls and highway incidents have trended higher.

Struck-by-object deaths overtook homicides as the third-most-frequent fatal event in 2004.

CHART 5

Four most frequent work-related fatal events, 1992–2006



NOTE: Data from 2001 exclude fatalities resulting from the September 11 terrorist attacks.
SOURCE: U.S. Bureau of Labor Statistics, U.S. Department of Labor, 2009.