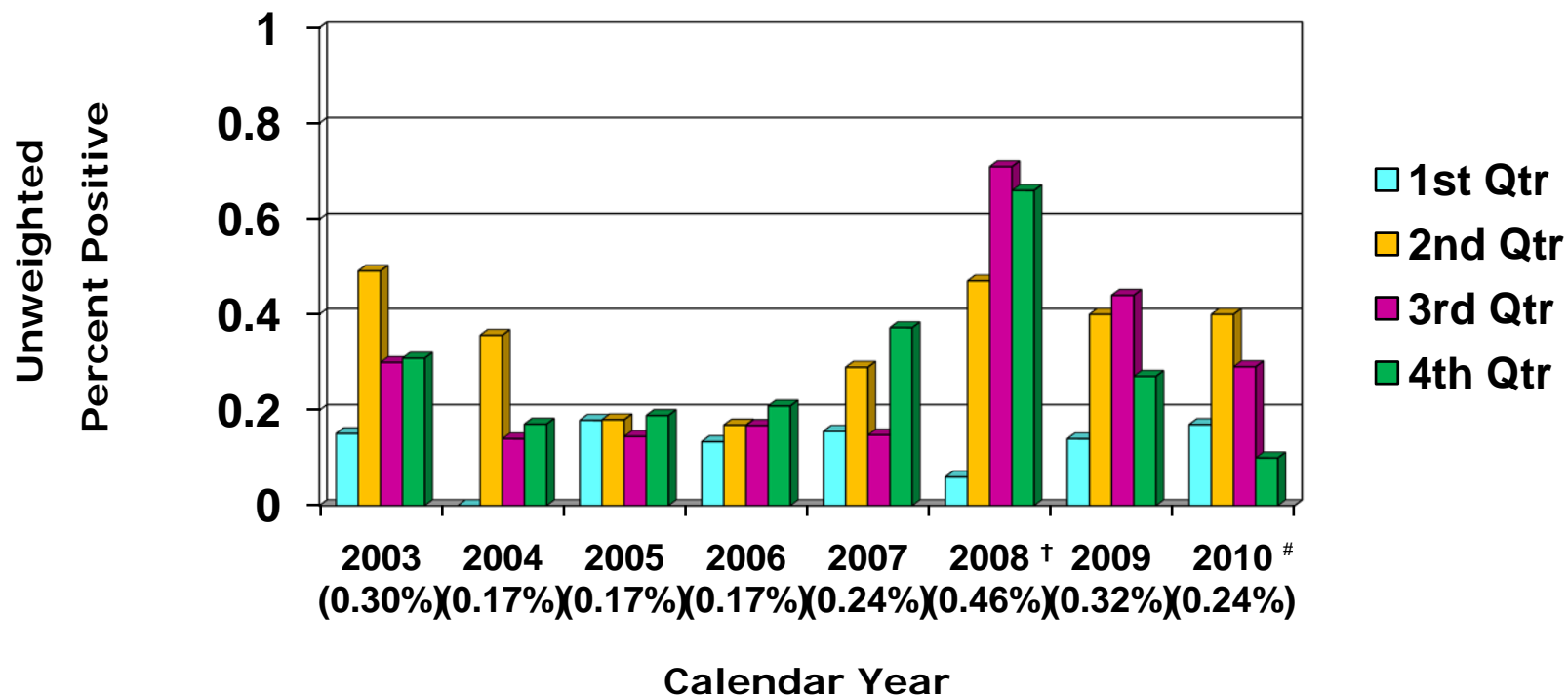


# Unweighted *E. coli* O157:H7 percent positive values from FSIS Raw Ground Beef Testing Federal, Retail and Import Verification and Follow-up Programs color-coded by quarter for 2003 to 2010\*

(Figure 2)



\* This table does not include raw ground beef component samples.

† Starting with CY2008, annual microbiological results are reported by sample collection date as opposed to analysis end date.

# In Qtr 3 (weeks of Aug 5 through Sept 2) approximately 1,100 fewer sample forms were sent out than were scheduled.

Note: The source of the data included in this table are the microbiological results of raw ground beef products analyzed for *Escherichia coli* O157:H7 and can be found at [http://www.fsis.usda.gov/Science/Ecoli\\_O157\\_Summary\\_Tables/index.asp](http://www.fsis.usda.gov/Science/Ecoli_O157_Summary_Tables/index.asp).