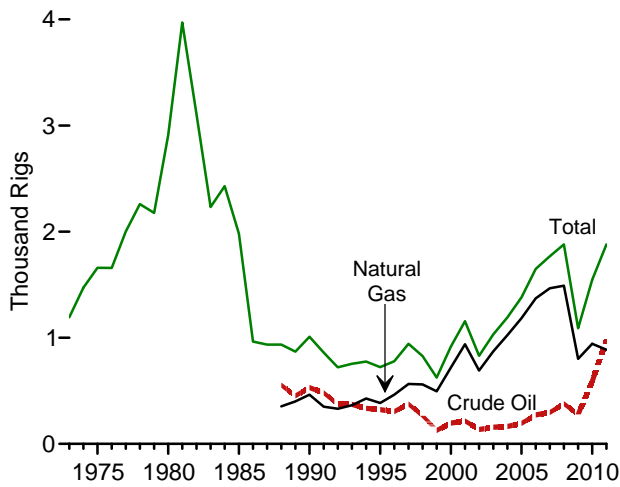


# **5. Crude Oil and Natural Gas Resource Development**

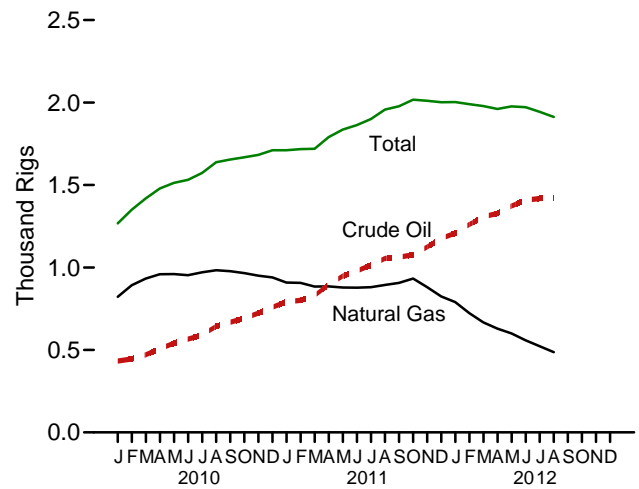
---

**Figure 5.1 Crude Oil and Natural Gas Resource Development Indicators**

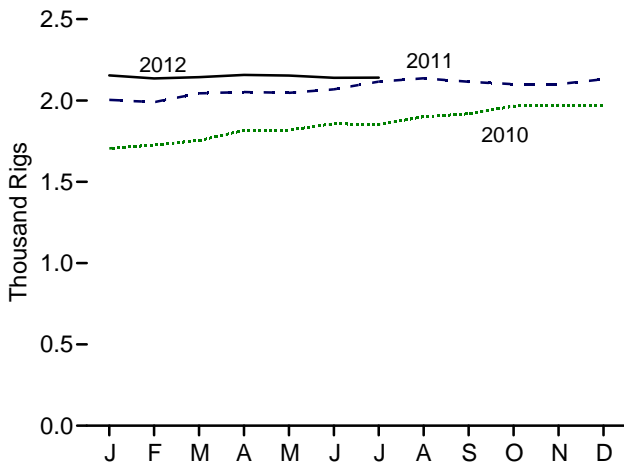
Rotary Rigs in Operation by Type, 1973-2011



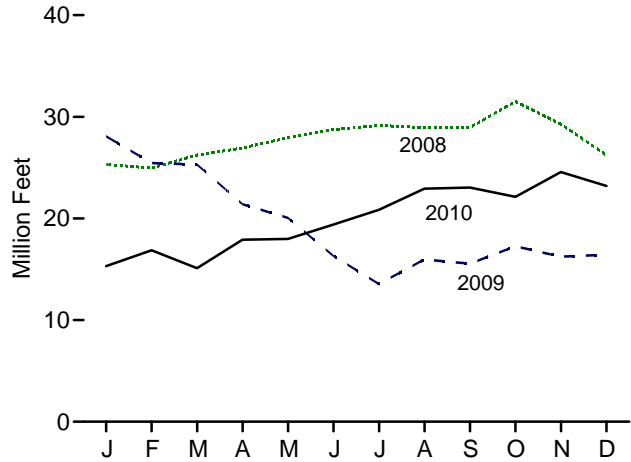
Rotary Rigs in Operation by Type, Monthly



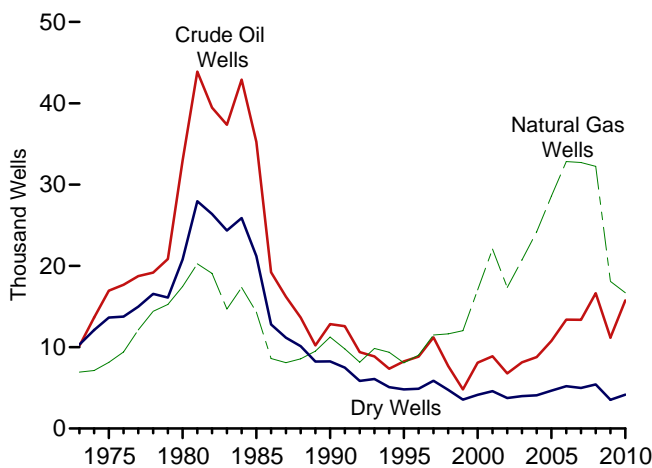
Active Well Service Rig Count, Monthly



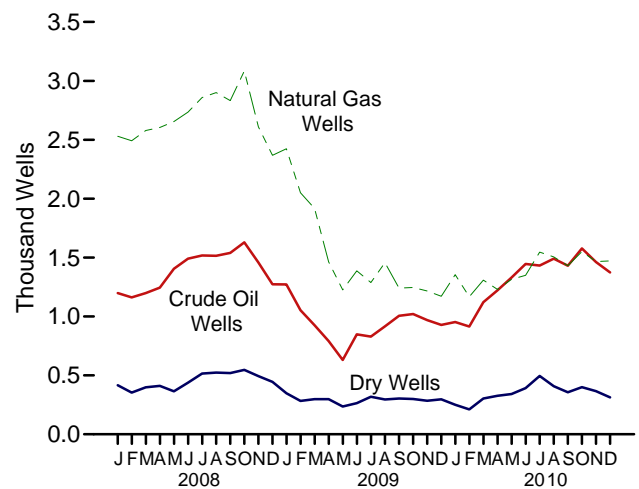
Footage Drilled, Monthly



Total Wells Drilled by Type, 1973-2010



Total Wells Drilled by Type, Monthly



Web Page: <http://www.eia.gov/totalenergy/data/monthly/#crude>.  
Sources: Tables 5.1 and 5.2.

**Table 5.1 Crude Oil and Natural Gas Drilling Activity Measurements**  
(Number of Rigs)

	Rotary Rigs in Operation <sup>a</sup>					Active Well Service Rig Count <sup>c</sup>
	By Site		By Type		Total <sup>b</sup>	
	Onshore	Offshore	Crude Oil	Natural Gas		
<b>1973 Average</b> .....	1,110	84	NA	NA	1,194	2,008
<b>1975 Average</b> .....	1,554	106	NA	NA	1,660	2,486
<b>1980 Average</b> .....	2,678	231	NA	NA	2,909	4,089
<b>1985 Average</b> .....	1,774	206	NA	NA	1,980	4,716
<b>1990 Average</b> .....	902	108	532	464	1,010	3,658
<b>1995 Average</b> .....	622	101	323	385	723	3,041
<b>1996 Average</b> .....	671	108	306	464	779	3,445
<b>1997 Average</b> .....	821	122	376	564	943	3,499
<b>1998 Average</b> .....	703	123	264	560	827	3,014
<b>1999 Average</b> .....	519	106	128	496	625	2,232
<b>2000 Average</b> .....	778	140	197	720	918	2,692
<b>2001 Average</b> .....	1,003	153	217	939	1,156	2,267
<b>2002 Average</b> .....	717	113	137	691	830	1,830
<b>2003 Average</b> .....	924	108	157	872	1,032	1,967
<b>2004 Average</b> .....	1,095	97	165	1,025	1,192	2,064
<b>2005 Average</b> .....	1,287	94	194	1,184	1,381	2,222
<b>2006 Average</b> .....	1,559	90	274	1,372	1,649	2,364
<b>2007 Average</b> .....	1,695	72	297	1,466	1,768	2,388
<b>2008 Average</b> .....	1,814	65	379	1,491	1,879	2,515
<b>2009 Average</b> .....	1,046	44	278	801	1,089	1,722
<b>2010</b>						
January .....	1,225	42	433	822	1,267	1,706
February .....	1,305	45	446	892	1,350	1,726
March .....	1,368	51	471	933	1,419	1,754
April .....	1,426	53	508	959	1,479	1,816
May .....	1,464	49	541	960	1,513	1,818
June .....	1,511	20	566	953	1,531	1,857
July .....	1,558	15	591	971	1,573	1,852
August .....	1,619	20	644	983	1,638	1,900
September .....	1,635	19	668	977	1,655	1,918
October .....	1,647	21	693	966	1,668	1,965
November .....	1,662	22	723	950	1,683	1,971
December .....	1,687	24	759	940	1,711	1,968
<b>Average</b> .....	<b>1,514</b>	<b>31</b>	<b>591</b>	<b>943</b>	<b>1,546</b>	<b>1,854</b>
<b>2011</b>						
January .....	1,686	26	793	909	1,711	2,004
February .....	1,692	26	801	907	1,718	1,990
March .....	1,694	26	830	884	1,720	2,044
April .....	1,762	28	896	885	1,790	2,052
May .....	1,804	32	948	878	1,836	2,047
June .....	1,829	34	979	877	1,863	2,069
July .....	1,865	35	1,014	880	1,900	2,116
August .....	1,923	35	1,055	894	1,957	2,136
September .....	1,946	32	1,063	907	1,978	2,115
October .....	1,982	35	1,077	933	2,017	2,100
November .....	1,974	37	1,125	880	2,011	2,100
December .....	1,961	42	1,177	824	2,002	2,131
<b>Average</b> .....	<b>1,846</b>	<b>32</b>	<b>984</b>	<b>887</b>	<b>1,879</b>	<b>2,075</b>
<b>2012</b>						
January .....	1,961	42	1,208	790	2,003	2,154
February .....	1,949	42	1,261	723	1,990	2,135
March .....	1,935	43	1,307	667	1,979	2,143
April .....	1,917	44	1,329	629	1,961	2,157
May .....	1,931	46	1,373	600	1,977	2,153
June .....	1,923	49	1,409	558	1,972	2,139
July .....	1,894	51	1,419	522	1,944	2,140
August .....	1,863	51	1,423	487	1,913	NA
<b>8-Month Average</b> .....	<b>1,920</b>	<b>46</b>	<b>1,345</b>	<b>617</b>	<b>1,966</b>	<b>NA</b>
<b>2011 8-Month Average</b> .....	<b>1,784</b>	<b>30</b>	<b>917</b>	<b>889</b>	<b>1,814</b>	<b>2,057</b>
<b>2010 8-Month Average</b> .....	<b>1,438</b>	<b>36</b>	<b>526</b>	<b>936</b>	<b>1,474</b>	<b>1,804</b>

<sup>a</sup> Rotary rigs in operation are reported weekly. Monthly data are averages of 4- or 5-week reporting periods, not calendar months. Multi-month data are averages of the reported data over the covered months, not averages of the weekly data. Annual data are averages over 52 or 53 weeks, not calendar years. Published data are rounded to the nearest whole number.

<sup>b</sup> Sum of rigs drilling for crude oil, rigs drilling for natural gas, and other rigs (not shown) drilling for miscellaneous purposes, such as service wells, injection wells, and stratigraphic tests.

<sup>c</sup> The number of rigs doing true workovers (where tubing is pulled from the well), or doing rod string and pump repair operations, and that are, on average, crewed and working every day of the month.

NA=Not available.

Note: Geographic coverage is the 50 States and the District of Columbia. Web Page: See <http://www.eia.gov/totalenergy/data/monthly/#crude> for all available data beginning in 1973.

Sources: • **Rotary Rigs in Operation:** Baker Hughes, Inc., Houston, TX, *Rotary Rigs Running—by State*, used with permission. See [http://investor.shareholder.com/bhi/rig\\_counts/rc\\_index.cfm](http://investor.shareholder.com/bhi/rig_counts/rc_index.cfm). • **Active Well Service Rig Count:** Cameron International Corporation, Houston, TX. See <http://www.c-a-m.com/Forms/Product.aspx?prodID=cdc209c4-79a3-47e5-99c2-fdeda6d4aad6>.

**Table 5.2 Crude Oil and Natural Gas Exploratory and Development Wells**

	Wells Drilled												Total Footage Drilled Thousand Feet
	Exploratory				Development				Total				
	Crude Oil	Natural Gas	Dry	Total	Crude Oil	Natural Gas	Dry	Total	Crude Oil	Natural Gas	Dry	Total	
	Number												
<b>1973 Total</b> .....	642	1,067	5,952	7,661	9,525	5,866	4,368	19,759	10,167	6,933	10,320	27,420	138,223
<b>1975 Total</b> .....	982	1,248	7,129	9,359	15,966	6,879	6,517	29,362	16,948	8,127	13,646	38,721	180,494
<b>1980 Total</b> .....	1,777	2,099	9,081	12,957	31,182	15,362	11,704	58,248	32,959	17,461	20,785	71,205	316,943
<b>1985 Total</b> .....	1,680	1,200	8,954	11,834	33,581	13,124	12,257	58,962	35,261	14,324	21,211	70,796	314,409
<b>1990 Total</b> .....	778	811	3,652	5,241	12,061	10,435	4,593	27,089	12,839	11,246	8,245	32,330	156,044
<b>1995 Total</b> .....	570	558	2,024	3,152	7,678	7,524	2,790	17,992	8,248	8,082	4,814	21,144	117,156
<b>1996 Total</b> .....	489	576	1,956	3,021	8,347	8,451	2,934	19,732	8,836	9,027	4,890	22,753	126,365
<b>1997 Total</b> .....	491	562	2,113	3,166	10,715	10,936	3,761	25,412	11,206	11,498	5,874	28,578	161,249
<b>1998 Total</b> .....	327	566	1,590	2,483	7,355	11,073	3,171	21,599	7,682	11,639	4,761	24,082	137,202
<b>1999 Total</b> .....	197	570	1,157	1,924	4,608	11,457	2,393	18,458	4,805	12,027	3,550	20,382	102,861
<b>2000 Total</b> .....	288	657	1,341	2,286	7,802	16,394	2,805	27,001	8,090	17,051	4,146	29,287	144,425
<b>2001 Total</b> .....	357	1,052	1,733	3,142	8,531	21,020	2,865	32,416	8,888	22,072	4,598	35,558	180,141
<b>2002 Total</b> .....	258	844	1,282	2,384	6,517	16,498	2,472	25,487	6,775	17,342	3,754	27,871	145,159
<b>2003 Total</b> .....	350	997	1,297	2,644	7,779	19,725	2,685	30,189	8,129	20,722	3,982	32,833	177,239
<b>2004 Total</b> .....	383	1,671	1,350	3,404	8,406	22,515	2,732	33,653	8,789	24,186	4,082	37,057	204,279
<b>2005 Total</b> .....	539	2,141	1,462	4,142	10,240	26,449	3,191	39,880	10,779	28,590	4,653	44,022	240,307
<b>2006 Total</b> .....	646	2,456	1,547	4,649	12,739	30,382	3,659	46,780	13,385	32,838	5,206	51,429	282,675
<b>2007 Total</b> .....	808	2,794	1,582	5,184	12,563	29,925	3,399	45,887	13,371	32,719	4,981	51,071	301,515
<b>2008</b>													
January .....	88	208	144	440	1,111	2,321	272	3,704	1,199	2,529	416	4,144	25,306
February .....	82	230	107	419	1,080	2,261	247	3,588	1,162	2,491	354	4,007	24,958
March .....	66	216	127	409	1,132	2,363	271	3,766	1,198	2,579	398	4,175	26,226
April .....	68	189	130	387	1,177	2,415	281	3,873	1,245	2,604	411	4,260	26,920
May .....	88	206	124	418	1,317	2,449	240	4,006	1,405	2,655	364	4,424	27,947
June .....	63	195	139	397	1,428	2,540	299	4,267	1,491	2,735	438	4,664	28,739
July .....	79	163	171	413	1,439	2,695	344	4,478	1,518	2,858	515	4,891	29,140
August .....	67	165	144	376	1,448	2,735	379	4,562	1,515	2,900	523	4,938	28,942
September .....	52	166	164	382	1,488	2,667	355	4,510	1,540	2,833	519	4,892	28,960
October .....	80	243	173	496	1,549	2,841	373	4,763	1,629	3,084	546	5,259	31,505
November .....	97	192	160	449	1,361	2,418	334	4,113	1,458	2,610	494	4,562	29,276
December .....	67	172	132	371	1,206	2,196	313	3,715	1,273	2,368	445	4,086	26,222
<b>Total</b> .....	<b>897</b>	<b>2,345</b>	<b>1,715</b>	<b>4,957</b>	<b>15,736</b>	<b>29,901</b>	<b>3,708</b>	<b>49,345</b>	<b>16,633</b>	<b>32,246</b>	<b>5,423</b>	<b>54,302</b>	<b>334,141</b>
<b>2009</b>													
January .....	80	171	99	350	1,192	2,253	250	3,695	1,272	2,424	349	4,045	28,077
February .....	62	125	88	275	991	1,925	195	3,111	1,053	2,050	283	3,386	25,440
March .....	59	146	88	293	867	1,771	210	2,848	926	1,917	298	3,141	25,304
April .....	36	68	93	197	755	1,396	205	2,356	791	1,464	298	2,553	21,406
May .....	47	90	80	217	584	1,136	156	1,876	631	1,226	236	2,093	20,055
June .....	44	91	75	210	804	1,297	189	2,290	848	1,388	264	2,500	16,301
July .....	40	100	101	241	789	1,188	217	2,194	829	1,288	318	2,435	13,543
August .....	49	84	88	221	867	1,372	207	2,446	916	1,456	295	2,667	15,970
September .....	61	71	96	228	945	1,170	207	2,322	1,006	1,241	303	2,550	15,547
October .....	55	79	78	212	966	1,167	222	2,355	1,021	1,246	300	2,567	17,261
November .....	38	83	85	206	931	1,133	199	2,263	969	1,216	284	2,469	16,236
December .....	34	98	84	216	894	1,074	213	2,181	928	1,172	297	2,397	16,424
<b>Total</b> .....	<b>605</b>	<b>1,206</b>	<b>1,055</b>	<b>2,866</b>	<b>10,585</b>	<b>16,882</b>	<b>2,470</b>	<b>29,937</b>	<b>11,190</b>	<b>18,088</b>	<b>3,525</b>	<b>32,803</b>	<b>231,562</b>
<b>2010</b>													
January .....	55	91	81	227	898	1,264	169	2,331	953	1,355	250	2,558	15,304
February .....	44	71	67	182	871	1,096	144	2,111	915	1,167	211	2,293	16,862
March .....	59	85	88	232	1,062	1,224	216	2,502	1,121	1,309	304	2,734	15,102
April .....	49	78	77	204	1,173	1,152	249	2,574	1,222	1,230	326	2,778	17,904
May .....	48	107	86	241	1,282	1,208	255	2,745	1,330	1,315	341	2,986	17,987
June .....	61	100	90	251	1,385	1,250	302	2,937	1,446	1,350	392	3,188	19,408
July .....	46	103	105	254	1,386	1,443	390	3,219	1,432	1,546	495	3,473	20,847
August .....	56	104	94	254	1,434	1,402	314	3,150	1,490	1,506	408	3,404	22,923
September .....	57	73	88	218	1,374	1,358	268	3,000	1,431	1,431	356	3,218	23,037
October .....	75	87	117	279	1,502	1,463	283	3,248	1,577	1,550	400	3,527	22,123
November .....	62	114	103	279	1,400	1,352	263	3,015	1,462	1,466	366	3,294	24,561
December .....	57	92	70	219	1,317	1,379	243	2,939	1,374	1,471	313	3,158	23,189
<b>Total</b> .....	<b>669</b>	<b>1,105</b>	<b>1,066</b>	<b>2,840</b>	<b>15,084</b>	<b>15,591</b>	<b>3,096</b>	<b>33,771</b>	<b>15,753</b>	<b>16,696</b>	<b>4,162</b>	<b>36,611</b>	<b>239,247</b>

Notes: • Data are estimates. • Prior to 1990, these well counts include only the original drilling of a hole intended to discover or further develop already discovered crude oil or natural gas resources. Other drilling activities, such as drilling an old well deeper, drilling of laterals from the original well, drilling of service and injection wells, and drilling for resources other than crude oil or natural gas are excluded. After 1990, a new well is defined as the first hole in the ground whether it is lateral or not. Due to the methodology used to estimate ultimate well counts from the available partially reported data, the counts shown on this page are frequently revised. See Note, "Crude Oil and Natural Gas Exploratory and Development

Wells," at end of section. • Geographic coverage is the 50 States and the District of Columbia.

Web Page: See <http://www.eia.gov/totalenergy/data/monthly/#crude> for all available data beginning in 1973.

Sources: • **1973–1989:** U.S. Energy Information Administration (EIA) computations based on well reports submitted to the American Petroleum Institute. • **1990 forward:** EIA computations based on well reports submitted to IHS, Inc., Denver, CO.

2011 and 2012 data in this table have been removed while EIA evaluates the quality of the data and the estimation methodology.

## Crude Oil and Natural Gas Resource Development

**Note. Crude Oil and Natural Gas Exploratory and Development Wells.** Three well types are considered in the *Monthly Energy Review (MER)* drilling statistics: “completed for crude oil,” “completed for natural gas,” and “dry hole.” Wells that productively encounter both crude oil and natural gas are categorized as “completed for crude oil.” Both development wells and exploratory wells (new field wildcats, new pool tests, and extension tests) are included in the statistics. All other classes of wells drilled in connection with the search for producible hydrocarbons are excluded. If a lateral is drilled at the same time as the original hole it is not counted separately, but its footage is included.

Prior to the March 1985 MER, drilling statistics consisted of

completion data for the above types and classes of wells as reported to the American Petroleum Institute (API) during a given month. Due to time lags between the date of well completion and the date of completion reporting to the API, as-reported well completions proved to be an inaccurate indicator of drilling activity. During 1982, for example, as-reported well completions rose, while the number of actual completions fell. Consequently, the drilling statistics published since the March 1985 MER are U.S. Energy Information Administration (EIA) estimates produced by statistically imputing well counts and footage based on the partial data available from the API. These estimates are subject to continuous revision as new data, some of which pertain to earlier months and years, become available. Additional information about the EIA estimation methodology may be found in “Estimating Well Completions,” a feature article published in the March 1985 MER.

THIS PAGE INTENTIONALLY LEFT BLANK