



REPLY TO
ATTENTION OF

DEPARTMENT OF THE ARMY
JACKSONVILLE DISTRICT CORPS OF ENGINEERS
P.O. BOX 4970
JACKSONVILLE, FLORIDA 32232-0019

November 30, 2011

Regulatory Division

PUBLIC NOTICE

Permit Application No. SAJ-2010-02881

TO WHOM IT MAY CONCERN: This Public Notice provides additional information regarding the application for the Via Verde pipeline project. The application is described by our Public Notice dated November 19, 2010. We are still evaluating whether or not to issue a Department of the Army Permit. If you have already submitted comments, you do not have to re-submit those. We welcome any new or supplemental comments arising from this additional information.

PROJECT. Autoridad de Energía Eléctrica (AEE; in English, Puerto Rico Energy and Power Authority, PREPA) proposes 92 miles of natural gas pipeline starting at the EcoEléctrica, L.P., Liquid Natural Gas (LNG) import terminal in the municipality of Peñuelas on the south coast of Puerto Rico to provide an alternative fuel for three power plants on the north coast (Cambalache Termoeléctricas Authority Central electric power plant in the municipality of Arecibo, Palo Seco facility in the municipality of Toa Baja and the San Juan facility in San Juan). For most of the route the pipe will be buried by excavating and backfilling a trench. For some locations the pipeline will be installed underground by Horizontal Directional Drilling (HDD). At one location the pipe will be above ground on piles.

PERMIT. Some of the construction activities in wetlands, streams and other Waters of the United States cannot be performed unless authorized by a Department of the Army Permit pursuant to Section 404 of the Clean Water Act (33 U.S.C. §1344) and Section 10 of the Rivers and Harbors Act of 1899 (33 U.S.C. §403). These activities include: (1) temporarily placing soil material excavated from the trench to the side of the trench; (2) placing soil material temporarily for work pads; (3) placing gravel permanently for pipeline valve stations; and, (4) in some cases placing pilings in or drilling under certain water bodies.

CHANGES. The enclosed drawings describe changes since the Public Notice dated November 19, 2010. The pipeline has been relocated in several locations. The construction right of way has been reduced to 60 feet in wetlands and selected forested areas. The drawings also now indicate the locations where the pipeline will be installed using HDD instead of by an open trench. HDD includes the use of drilling mud. The design of the barrier surrounding HDD work pads to contain spills has been clarified. At Levittown beach, where most of the length of the beach will be HDD, a second barrier has been added. The drawings also now indicate the location of Mainline Valves (MLV) when located in wetlands. For each MLV, gravel will be placed on the wetland to provide a vegetation-free area for maintenance and access but not block water flow. To compensate for this permanent loss of wetlands, some wetlands neighboring the Caño Tiburones Natural Reserve will be enhanced.

DRAFT ENVIRONMENTAL ASSESSMENT. Our review of this permit application up to this date indicates that an Environmental Impact Statement will not be required. Our final decision on this matter will be made after the close of the comment period of this Public Notice. If we decide not to prepare an EIS, we will prepare and sign an Environmental Assessment (EA) pursuant to the National Environmental Policy Act (NEPA). Our draft EA is available for you to download at either of the Web locations below. This draft is based on our review up to today and will change based on new comments and other information. This draft also includes information relevant to other Federal laws (besides NEPA) that will be part of our evaluation whether or not to issue the Department of the Army Permit.

http://www.saj.usace.army.mil/Divisions/Regulatory/publicnotices_Antilles.htm

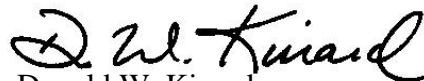
(Click on 20111130-SAJ-2010-02881-EASOF.pdf.)

<http://www.saj.usace.army.mil/Divisions/Regulatory/interest.htm>

(Click on the “Via Verde Natural Gas Pipe Line” link, then click on the “Additional Information” link, then scroll to the “Corps Public Notice” section.)

PUBLIC HEARING. Our final decision whether to conduct Public Hearings will be made after the close of the comment period of this Public Notice.

COMMENTS. Please provide written comments within 30 days from the date of this Public Notice to Mr. Bob Barron at the letterhead address, by delivery (701 San Marco Blvd, Room 372, Jacksonville, FL, 32207), or by e-mail (Robert.B.Barron@usace.army.mil).



Donald W. Kinard
Chief, Regulatory Division

Index Map

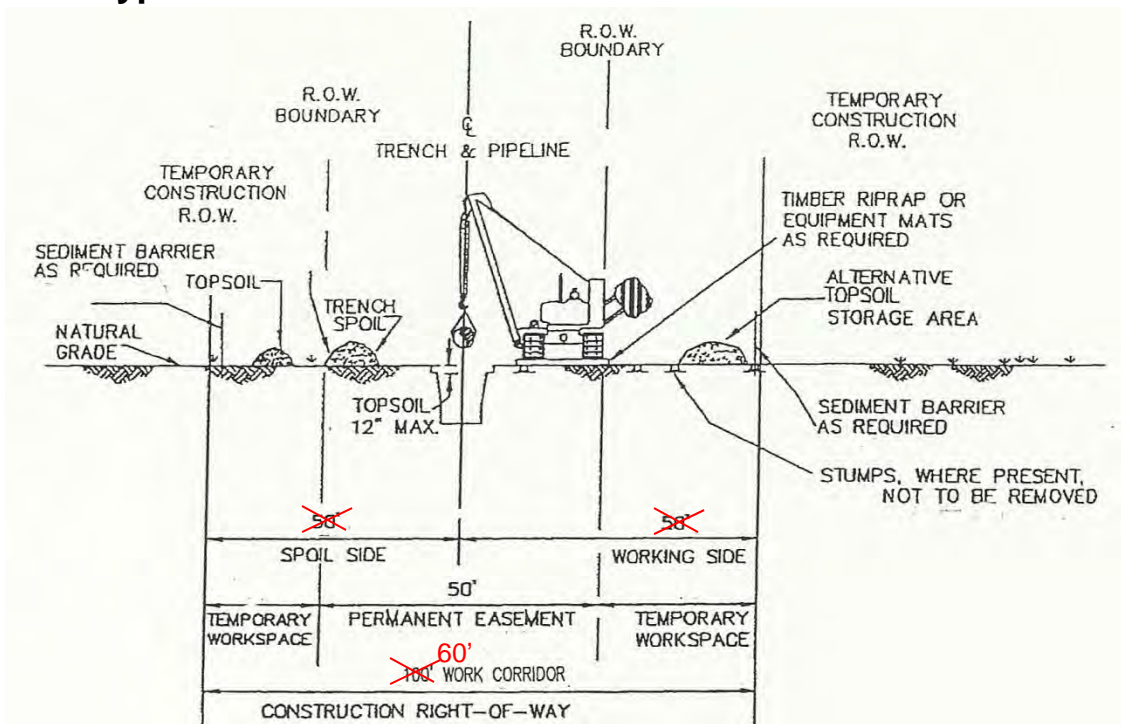


Notes regarding the Maps.

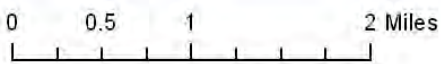
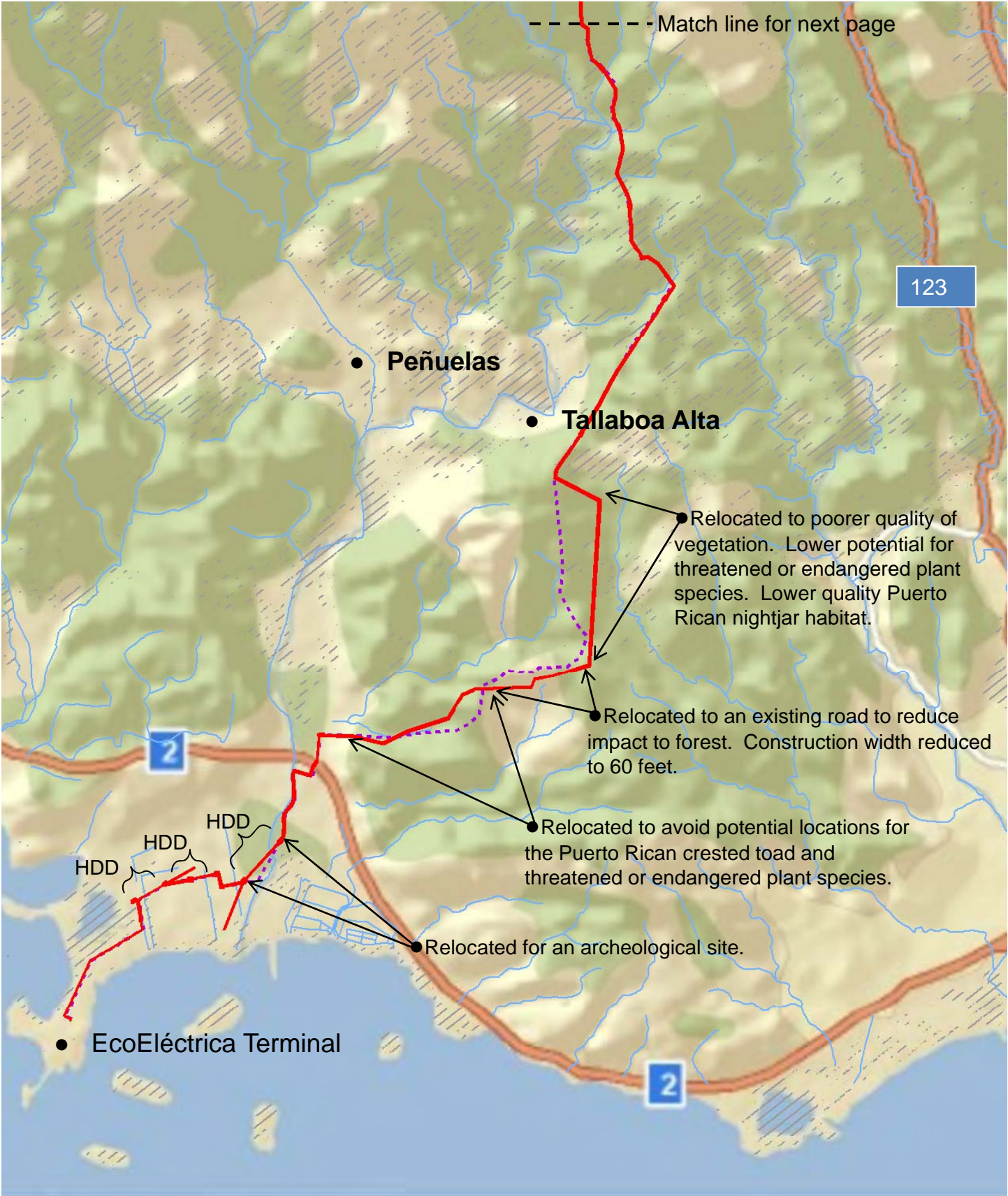
1. The Base map is the World Street Map made available from ESRI. Sources (not all apply to the data within Puerto Rico): Esri, DeLorme, NAVTEQ, TomTom, USGS, Intermap, AND, ESRI Japan, METI, ESRI Hong Kong, ESRI Thailand, Procalculo Prosis. Overlaid on the Base map are streams, canals and other water flowlines from the U.S. Geological Survey National Hydrography Dataset. (USGS NHD)

2. The gray cross-hatching represents 9 of the land covers mapped by the Puerto Rico GAP Project representing wetlands, moist grasslands, and open waters. This does not represent the determination of jurisdiction by the Corps. This does not represent concurrence of this interpretation by the authors of the GAP project. (Puerto Rico GAP p Gould, W., C. Alarcón, B. Fevold, M.E. Jiménez, S. Martinuzzi, G. Potts, M. Solórzano, and E. Ventosa. 2007. Puerto Rico Gap Analysis Project – Final Report. USGS, Moscow, ID and the USDA Forest Service International Institute of Tropical Forestry, Rio Piedras, PR. 159 pp. and 8 appendices.)

Typical Construction Cross-section in Wetlands

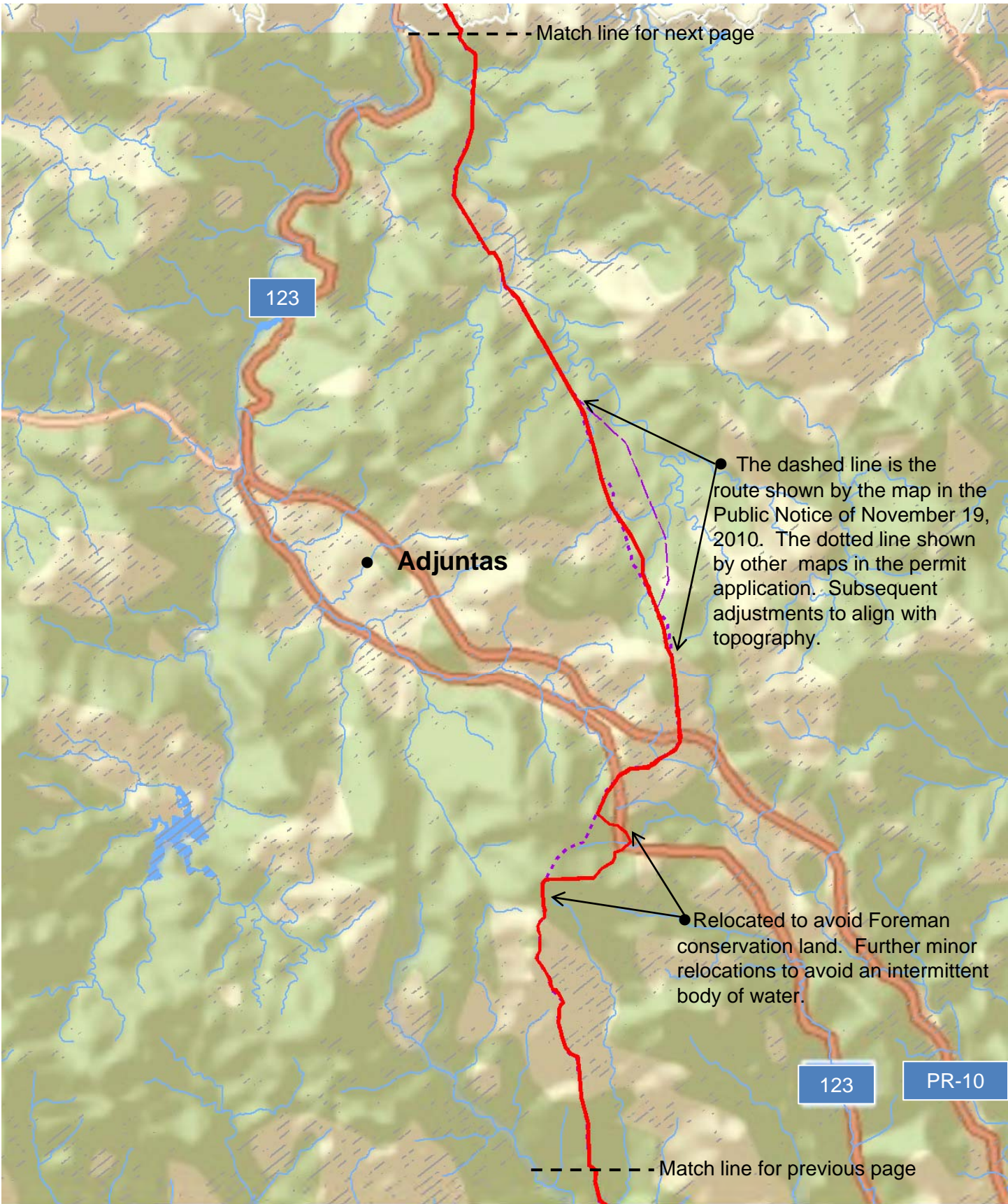


--- Match line for next page



Base map: ESRI 'World Street Map' with overlay from USGS NHD.

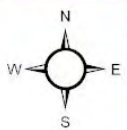
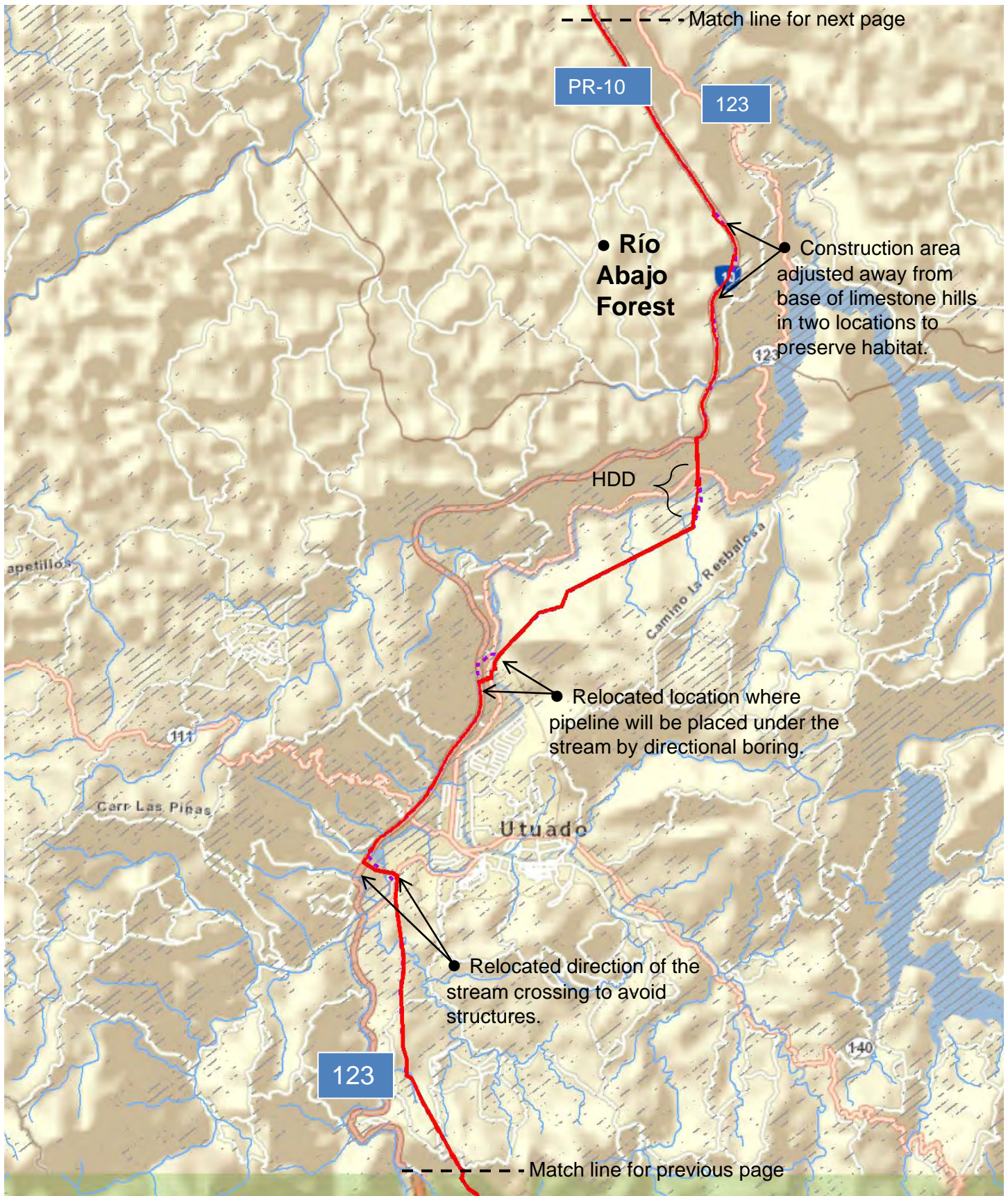
- Route & Work Areas of 5 August, 2011
- - - Permit Application of 3 November, 2010
- Potential waters and wetlands using the Puerto Rico GAP Project land cover map



0 0.5 1 2 Miles

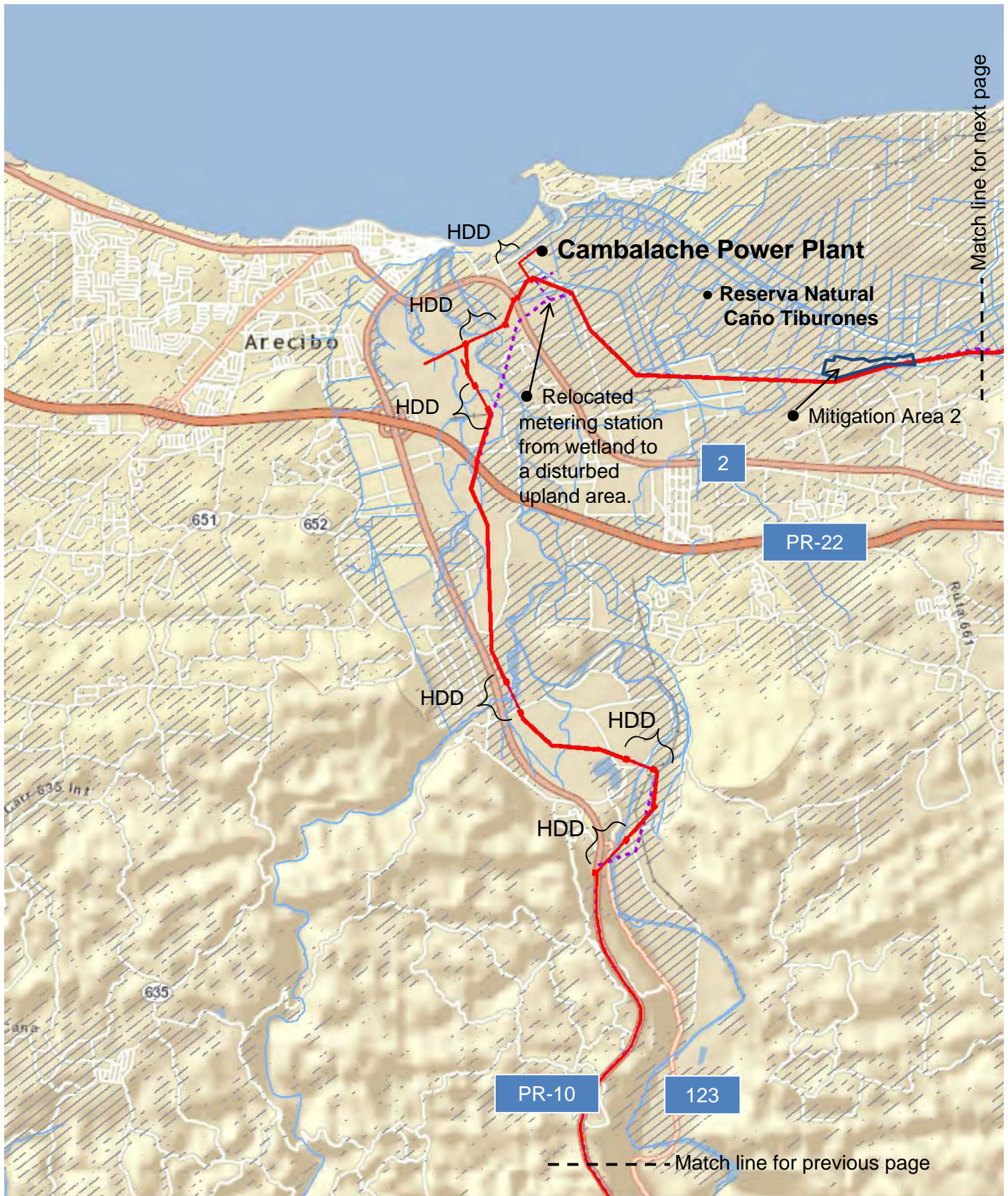
Base map: ESRI 'World Street Map' with overlay from USGS NHD.

- Route & Work Areas of 5 August, 2011
- - - Permit Application of 3 November, 2010
- Potential waters and wetlands using the Puerto Rico GAP Project land cover map



Base map: ESRI 'World Street Map' with overlay from USGS NHD.

- Route & Work Areas of 5 August, 2011
- - - Permit Application of 3 November, 2010
- Potential waters and wetlands using the Puerto Rico GAP Project land cover map



0 0.5 1 2 Miles

Base map: ESRI 'World Street Map' with overlay from USGS NHD.

- Route & Work Areas of 5 August, 2011
- - - Permit Application of 3 November, 2010
- / / / / / Potential waters and wetlands using the Puerto Rico GAP Project land cover map



HDD ----- Match line for next page

● Relocated and added HDD to avoid impact to La Esperanza Reserve.

● Adjusted work area of HDD for archeological site.

● **Barceloneta**

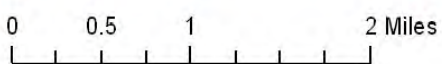
PR-22

2

● Reserva Natural
Caño Tiburones

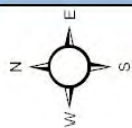
----- Match line for previous page

● Mitigation Area 2



Base map: ESRI 'World Street Map' with overlay from USGS NHD.

- Route & Work Areas of 5 August, 2011
- - - Permit Application of 3 November, 2010
- Potential waters and wetlands using the Puerto Rico GAP Project land cover map



0 0.5 1 2 Miles
 Base map: ESRI 'World Street Map' with overlay from USGS NHD.

- Route & Work Areas of 5 August, 2011
- - - Permit Application of 3 November, 2010
- Potential waters and wetlands using the Puerto Rico GAP Project land cover map



PR-22

2

● Relocated to avoid an archeological site and reduce quantity of wetland impacts.



0 0.5 1 2 Miles

Base map: ESRI 'World Street Map' with overlay from USGS NHD.

- Route & Work Areas of 5 August, 2011
- - - Permit Application of 3 November, 2010
- Potential waters and wetlands using the Puerto Rico GAP Project land cover map

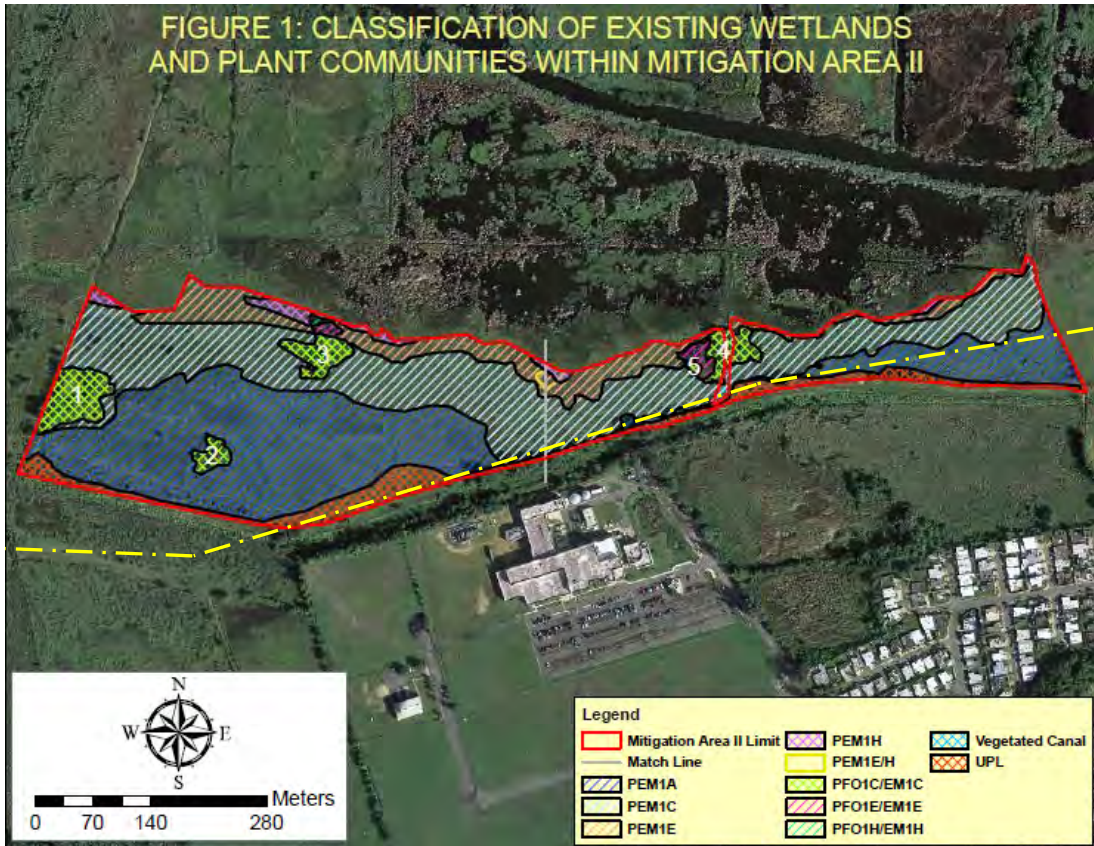


0 0.5 1 2 Miles

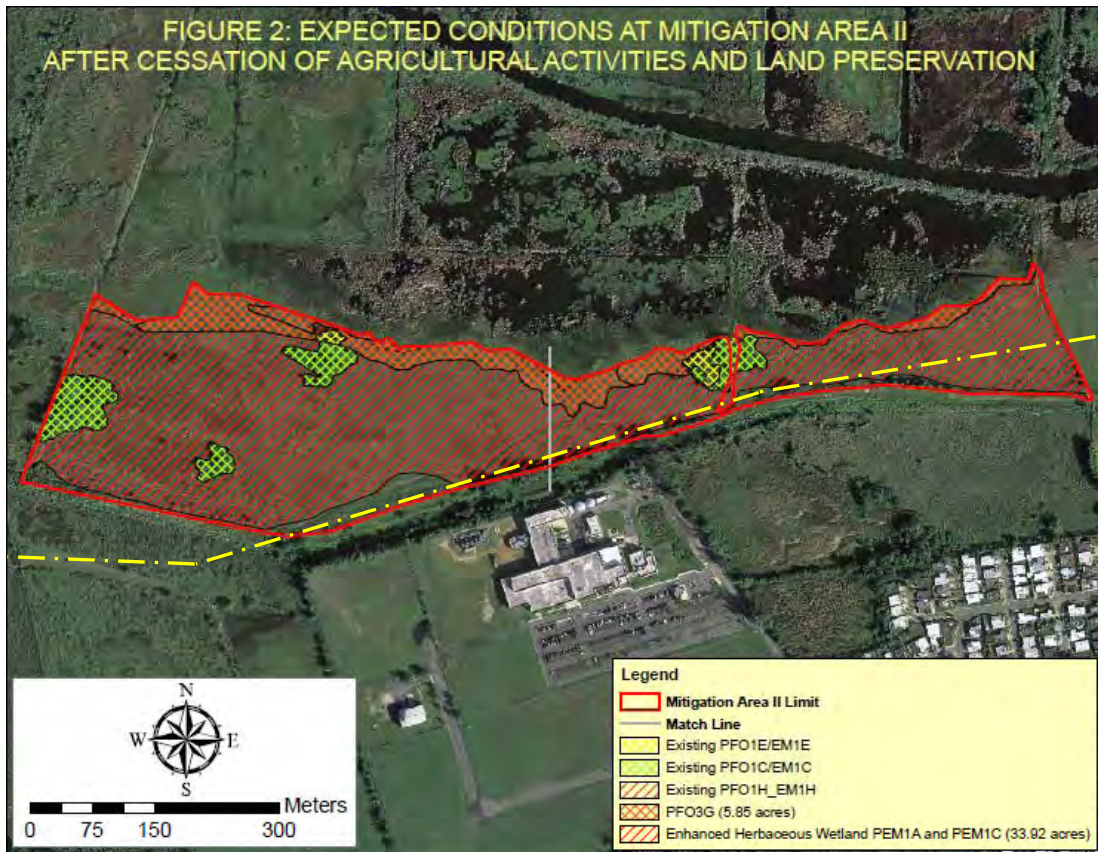
Base map: ESRI 'World Street Map' with overlay from USGS NHD.

- Route & Work Areas of 5 August, 2011
- - - Permit Application of 3 November, 2010
- Potential waters and wetlands using the Puerto Rico GAP Project land cover map

Existing Condition of Mitigation Area 2



Future Expected Condition

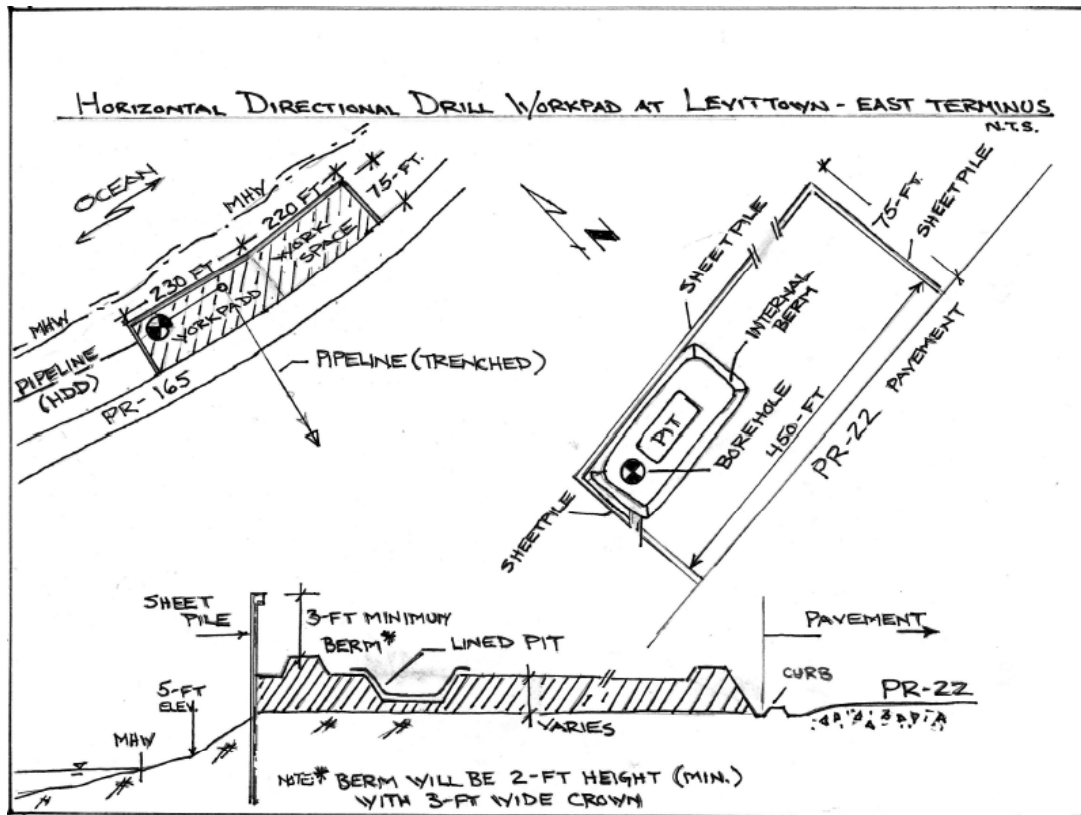
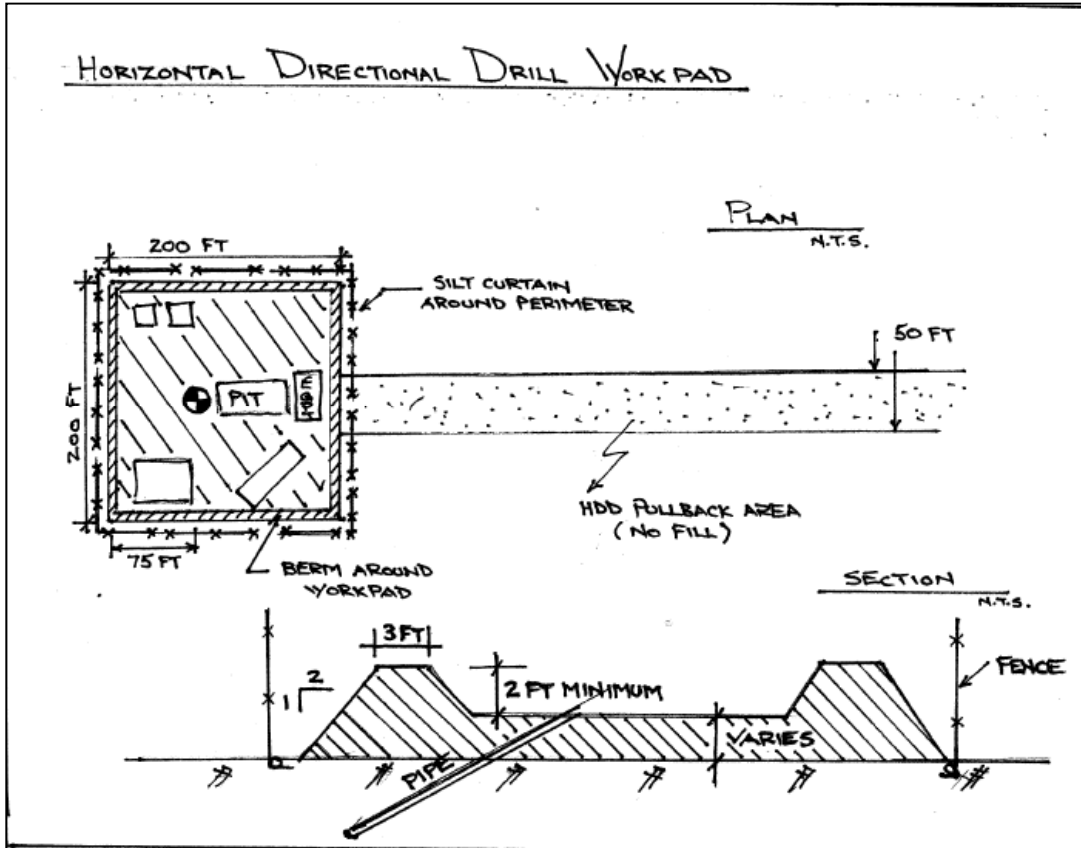


Notes.

1. Figures extracted from the Applicant's submittal of a part of their Mitigation Plan.. This Plan is being reviewed by the U.S. Army Corps of Engineers (Corps).

2. Yellow dashed line (--- - ---) is the approximate centerline of proposed pipeline drawn by the Corps from an overlay of a land survey and aerial photo provided by the Applicant.

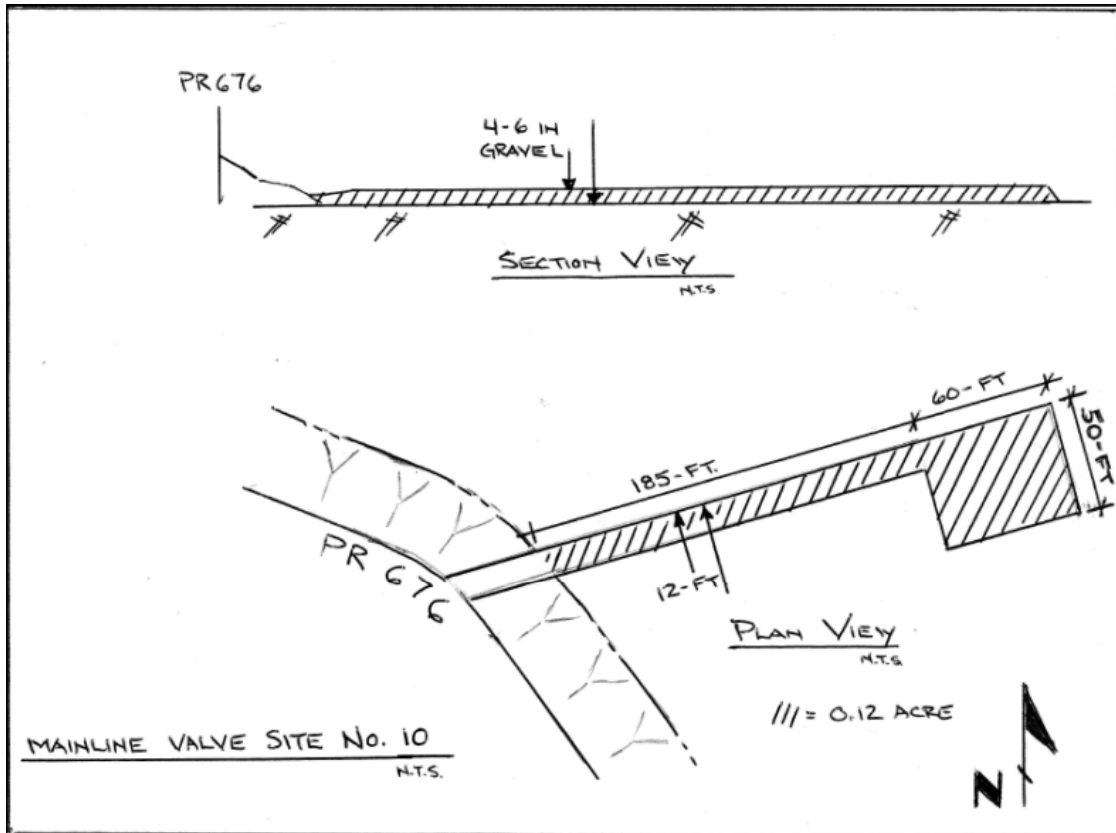
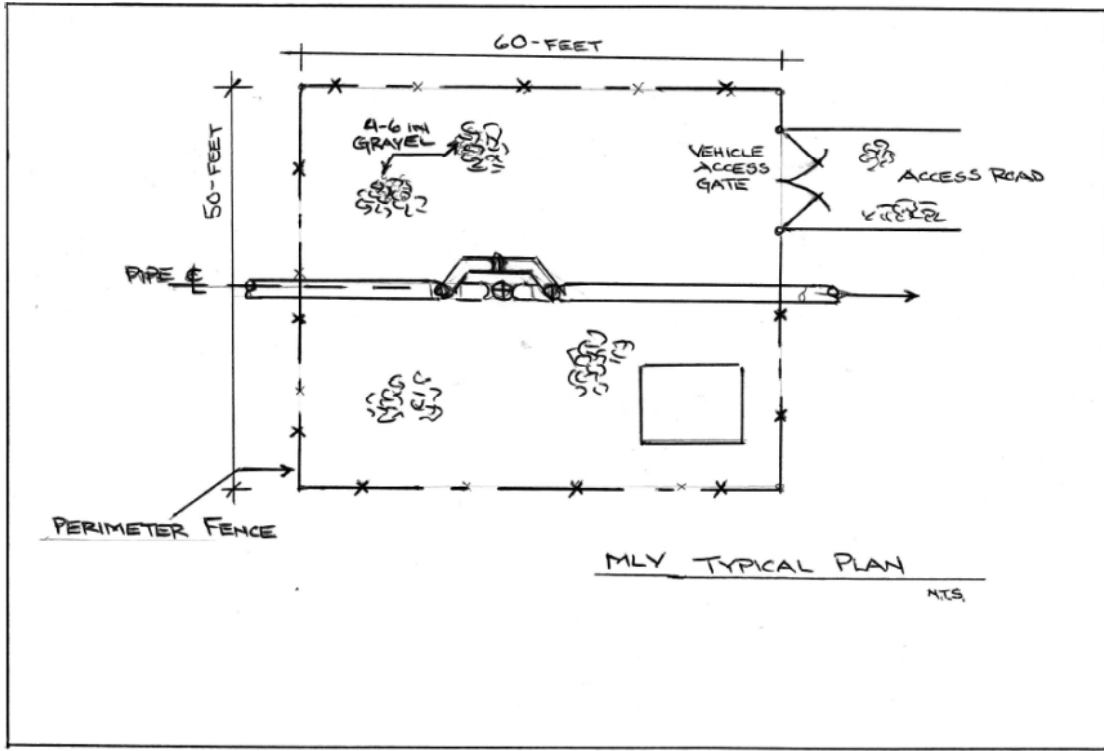
Horizontal Directional Drilling (HDD) Work Pad



Notes.

1. The top figure shows typical barrier around work pad to control spillage of drilling mud or sediment runoff.
2. The bottom figure shows the additional barrier at Levittown Beach.

Mainline Valves (MLV)



Notes.

1. The top figure shows typical plan for the valve (that enable flow of gas to sections of the pipeline to be shut off), equipment shed and fence.
2. The bottom figure shows the gravel placed for the valve and access road for MLV #7. At other locations the access road is longer or shorter. The access roads are within the construction right of way.