



DESIGNED TO EARN THE ENERGY STAR

The estimated energy performance for this design meets US EPA criteria. The building will be eligible for ENERGY STAR after maintaining superior performance for one year.

GouldEvans

**GENERAL CLARENCE TINKER ELEMENTARY SCHOOL
TAMPA, FLORIDA**

This K-12 earned an Energy Star rating of 82 with a 27% reduction in Carbon Dioxide (CO2) and an energy use of only 100.9 kBtu/square foot/year.

Passive Cooling Design Strategies in this 38,277 sf K-12 resulted in:
 * Energy costs of \$2.22/sf annually
 * Energy savings 1,456,691 kBtu
 * CO2 savings of 309,500 lbs.



Recessed windows: Prevent glare, direct sun and heat gain

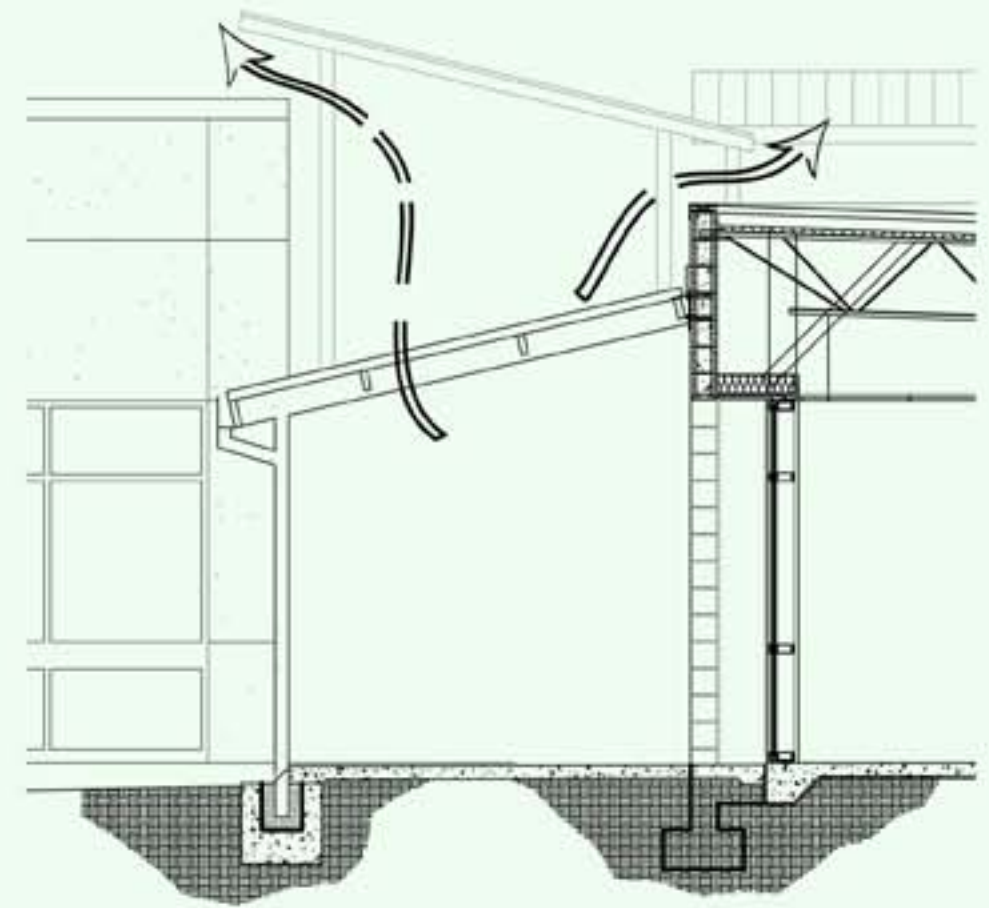


Siting/Building orientation: The shortest facades face east/west limiting exposure to the direct rays of the morning and afternoon sun

Materials: White roofs to reduce cooling loads



Natural Ventilation: The exterior corridor roofs create a stacking effect: - rising hot air drafts cooler air from the landscaped courtyards, perfect for our hot humid climate.



Tree Conservation: Existing large shade trees were saved by designing carefully around them. The trees cool the building and the parking lot, reducing the urban heat island effect

