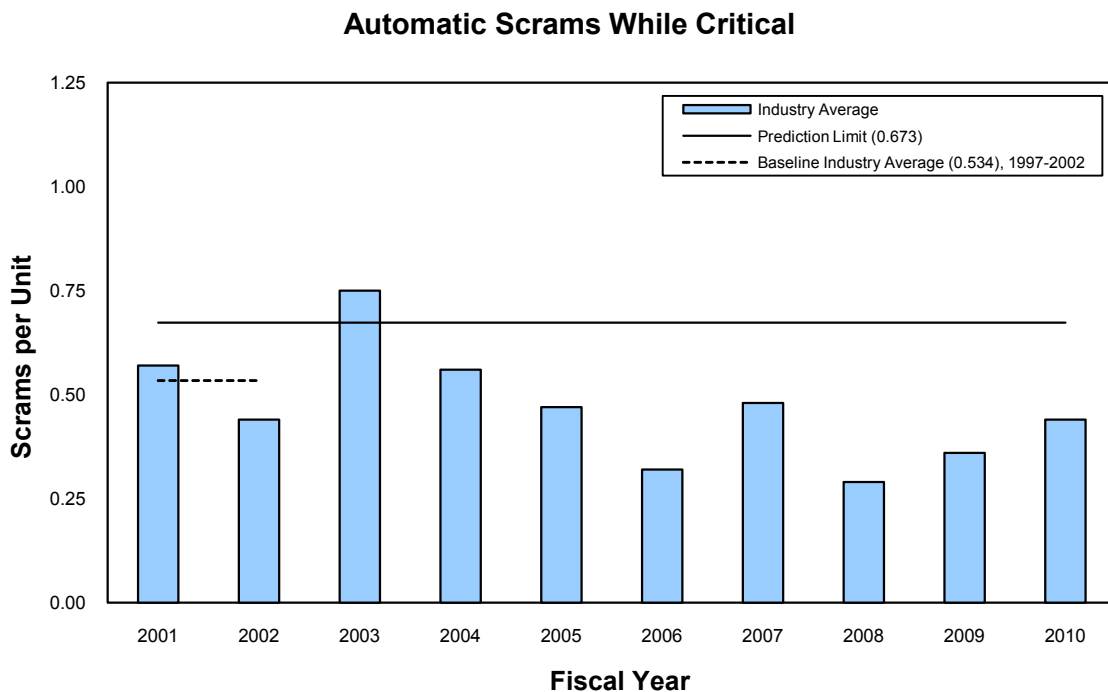


## FISCAL YEAR 2010 SHORT-TERM INDUSTRY PERFORMANCE

The annual industry trend analysis compares the data for the most recent year to established short-term “prediction limits.” The prediction limits are 95<sup>th</sup> percentiles of predictive distributions for the data. The predictive distributions are statistical probability distributions that describe expected future performance. They are derived from performance during “baseline” periods for each performance indicator (PI). Baseline periods are periods for each PI during which the data can be regarded as fairly constant and indicative of “current” performance.

The results of the evaluation of the fiscal year (FY) 2010 Industry Trends Program PIs, using the established prediction limits, indicate that no PI exceeded its associated prediction limit in FY 2010, as shown in the following figures for each PI with its FY 2010 data and associated prediction limit.



**Figure 1 Automatic scrams while critical**

### Safety System Actuations

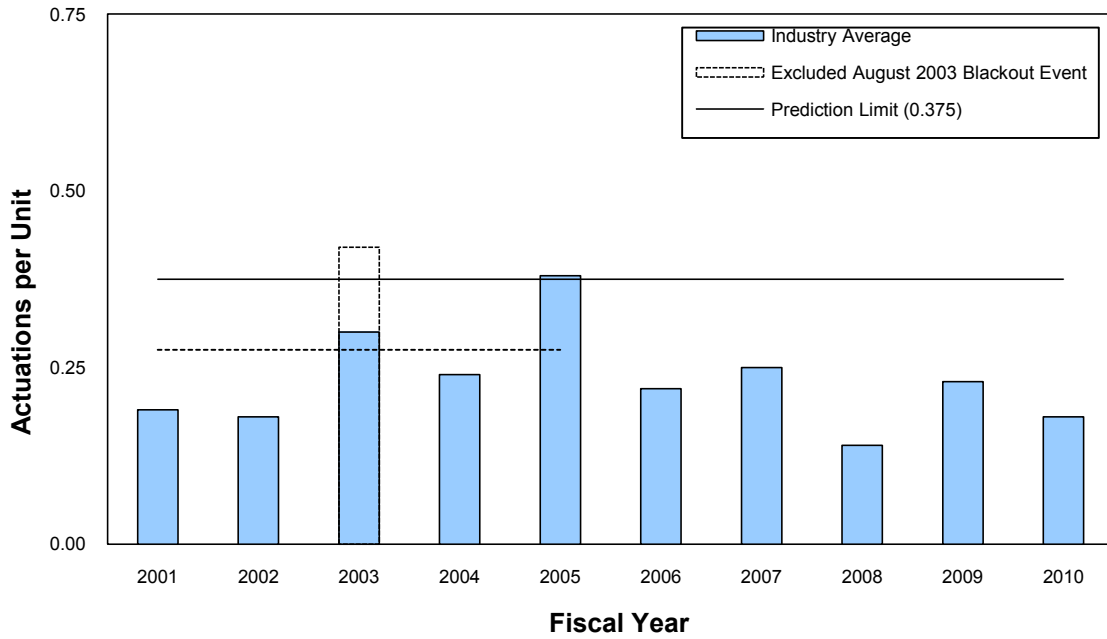


Figure 2 Safety system actuations

### Significant Events

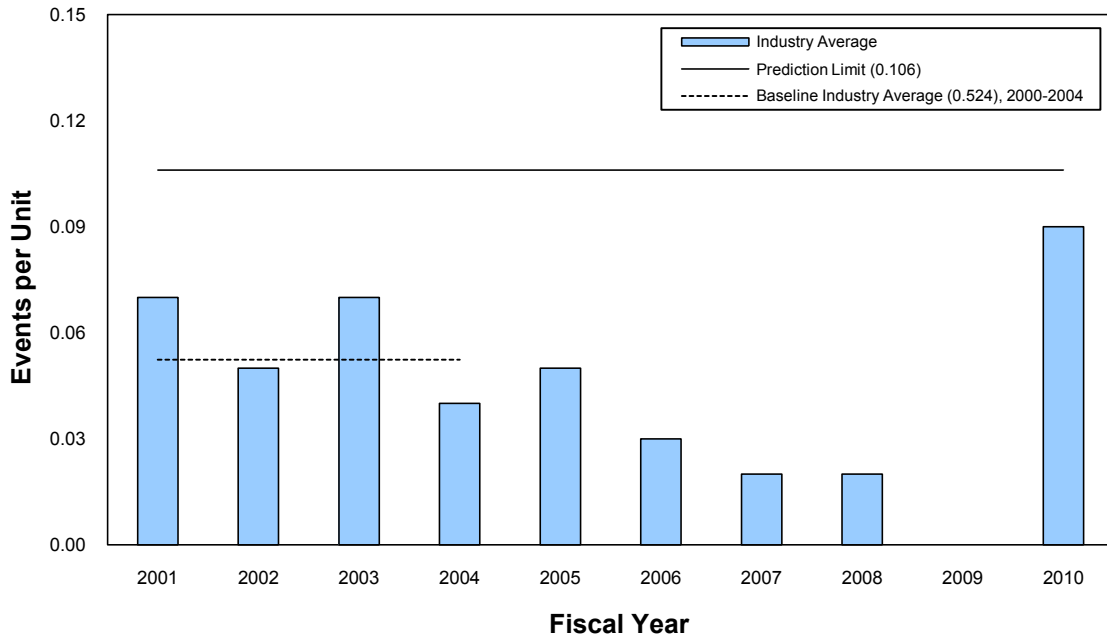


Figure 3 Significant events

### Safety System Failures

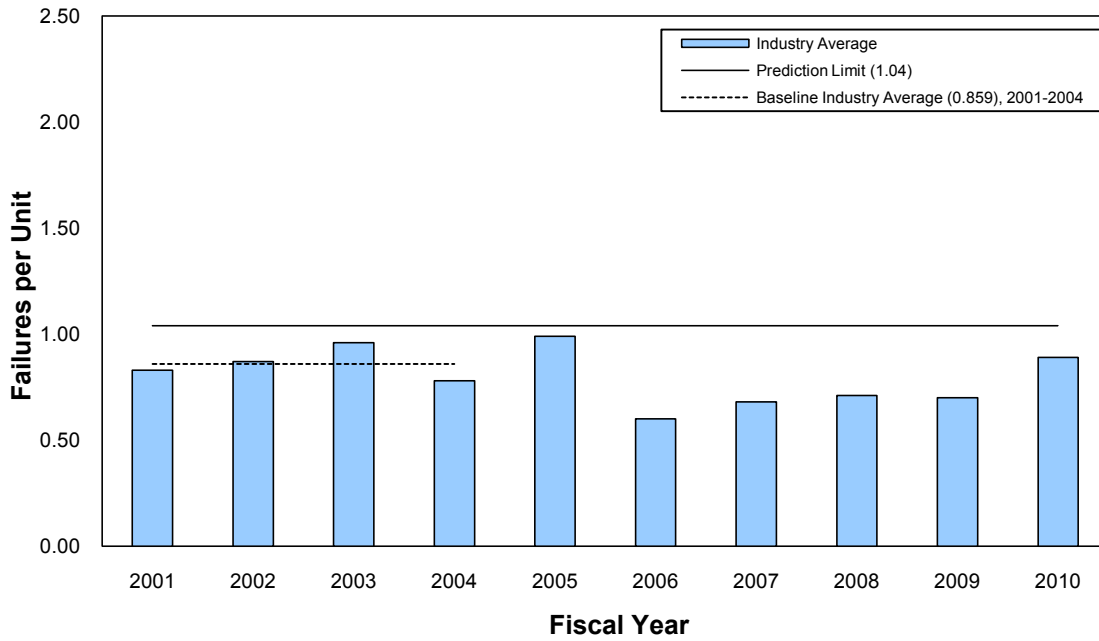


Figure 4 Safety system failures

### Forced Outage Rate

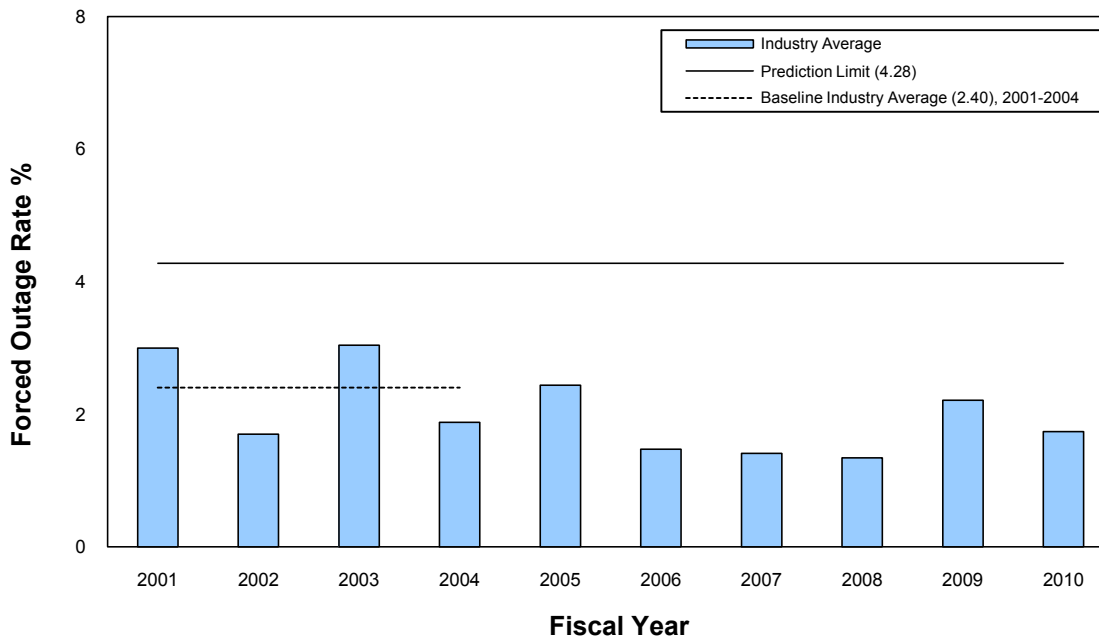


Figure 5 Forced outage rate

### Equipment Forced Outages/1000 Commercial Critical Hours

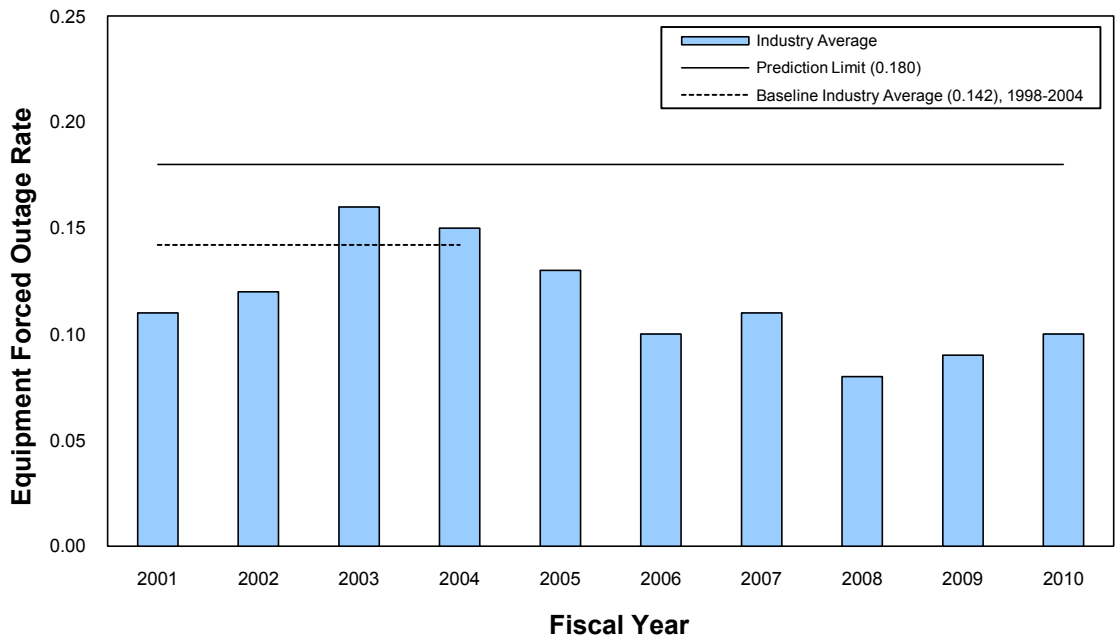


Figure 6 Forced outage rate of equipment per 1,000 commercial critical hours

### Collective Radition Exposure

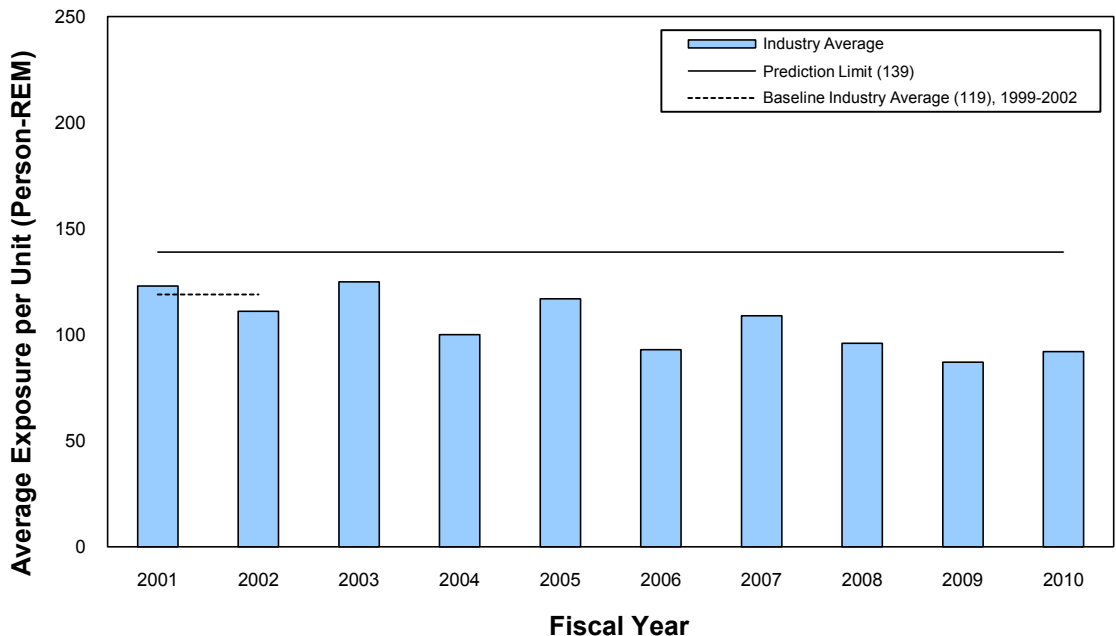


Figure 7 Collective radiation exposure

### Unplanned Power Changes

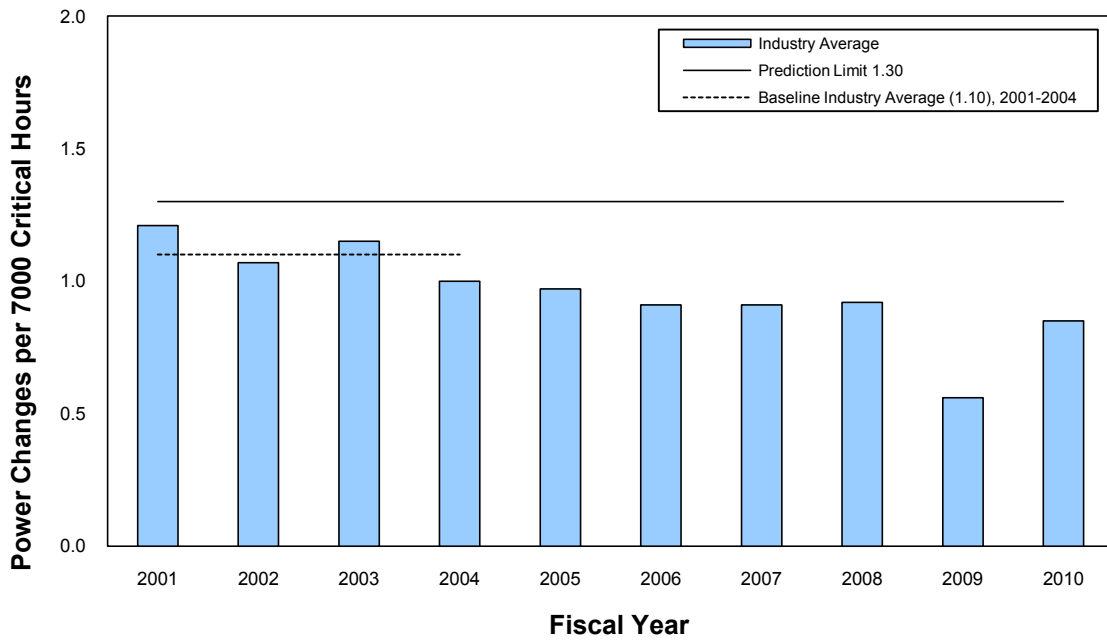


Figure 8 Unplanned power changes per 7,000 critical hours

### Reactor Coolant System Activity

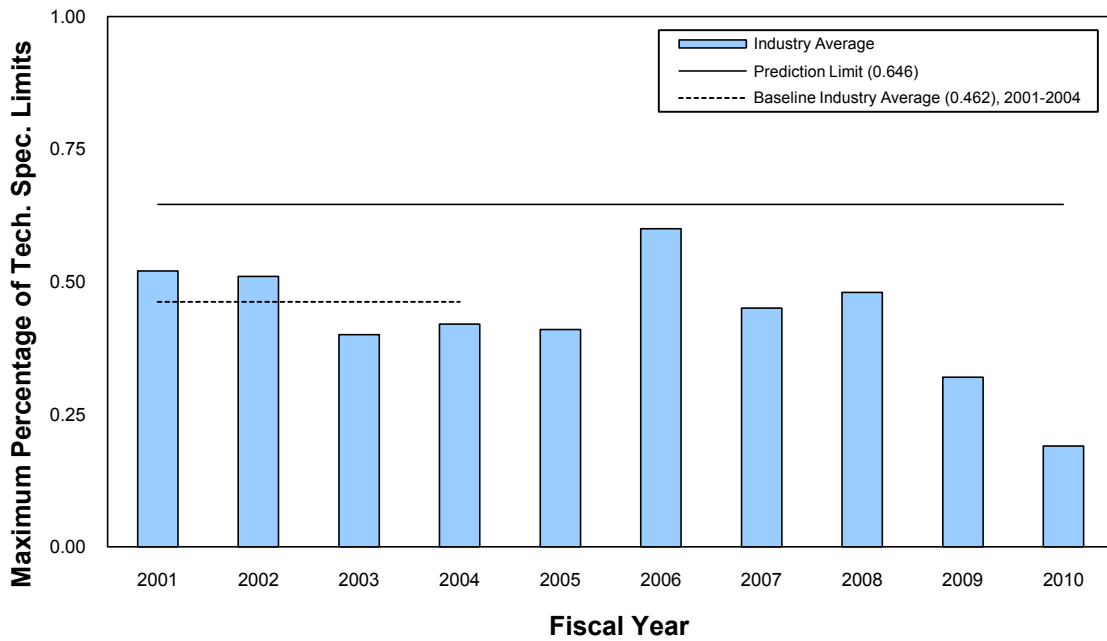


Figure 9 Reactor coolant system activity

### Reactor Coolant System Leakage

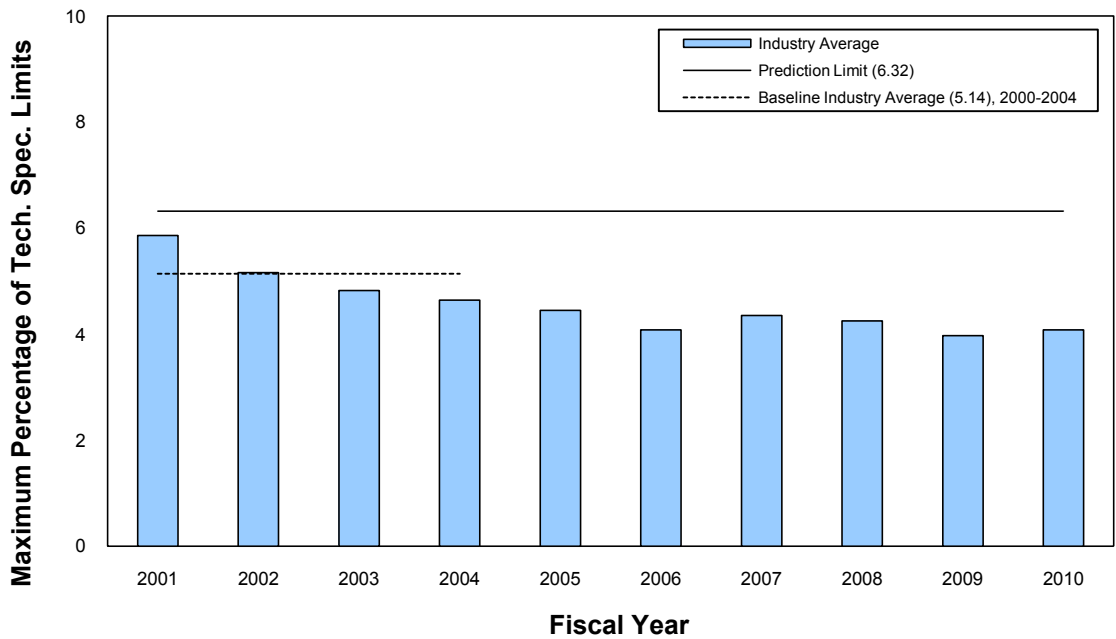


Figure 10 Reactor coolant system leakage

### Drill/Exercise Performance

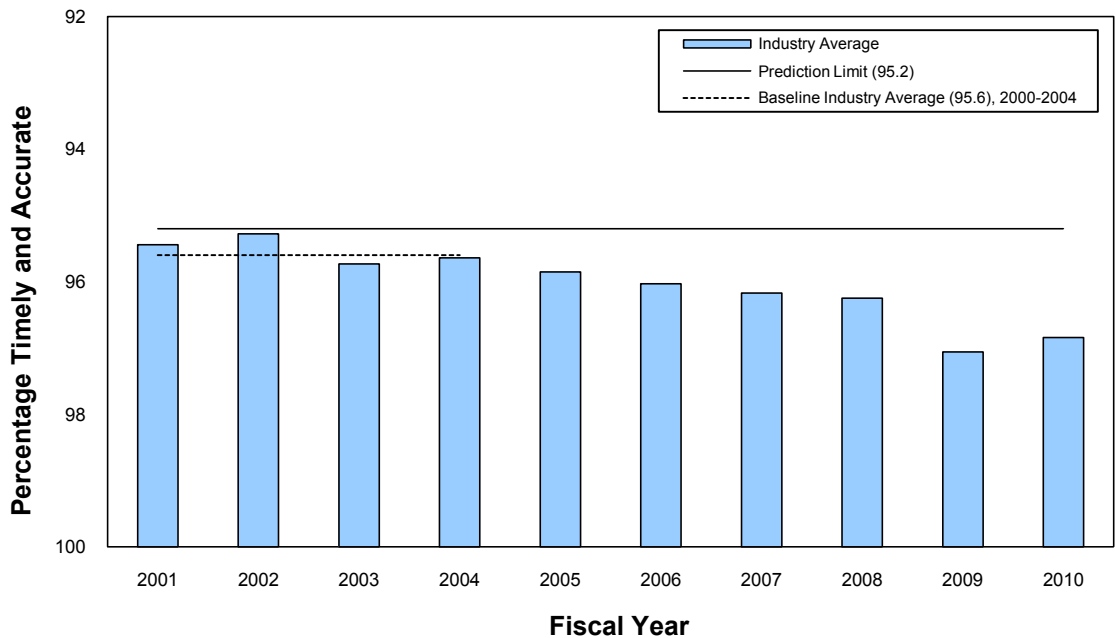


Figure 11 Drill/exercise performance

### ERO Drill Participation

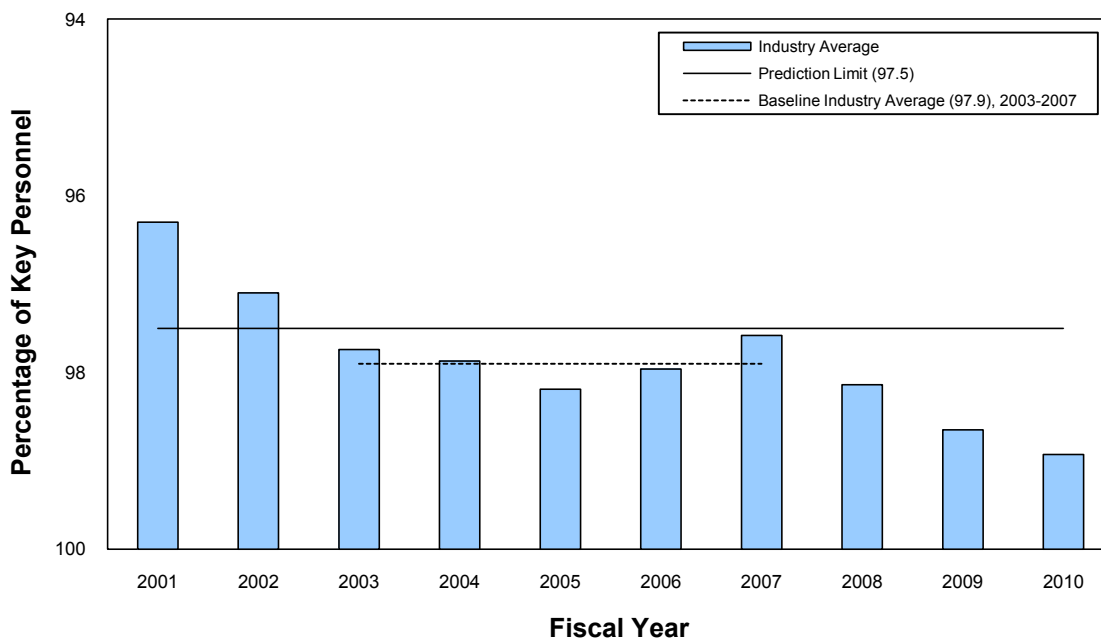


Figure 12 Emergency response organization drill participation

### Alert and Notification System Reliability

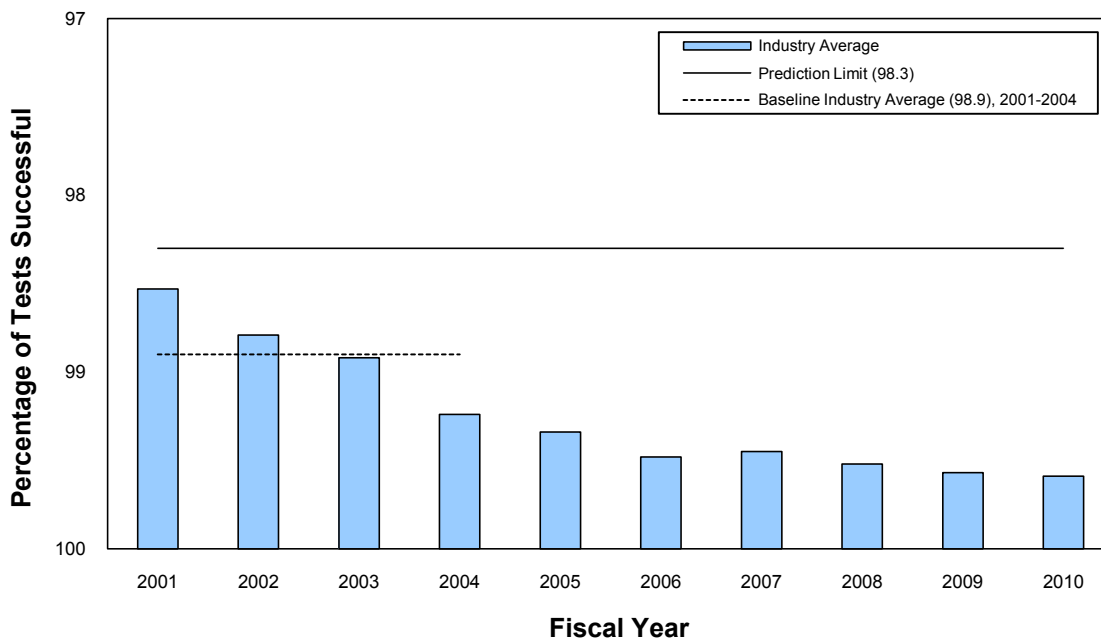


Figure 13 Alert and notification system reliability

Note that the 2003 blackout event in the safety system actuations graph (Figure 2) and the 2000 steam generator tube rupture event at Indian Point Nuclear Generating Unit 2 in the reactor coolant system leakage graph (Figure 10) were not included in the short-term data for the purpose of determining prediction limits. They were excluded from the development of the prediction limit models because they are considered outlier events that overly influenced the statistical analysis of the industry-wide data. This treatment results in a more conservative prediction limit.