

Transmission of material in this release is embargoed until  
8:30 a.m. (EDT) Wednesday, September 12, 2012

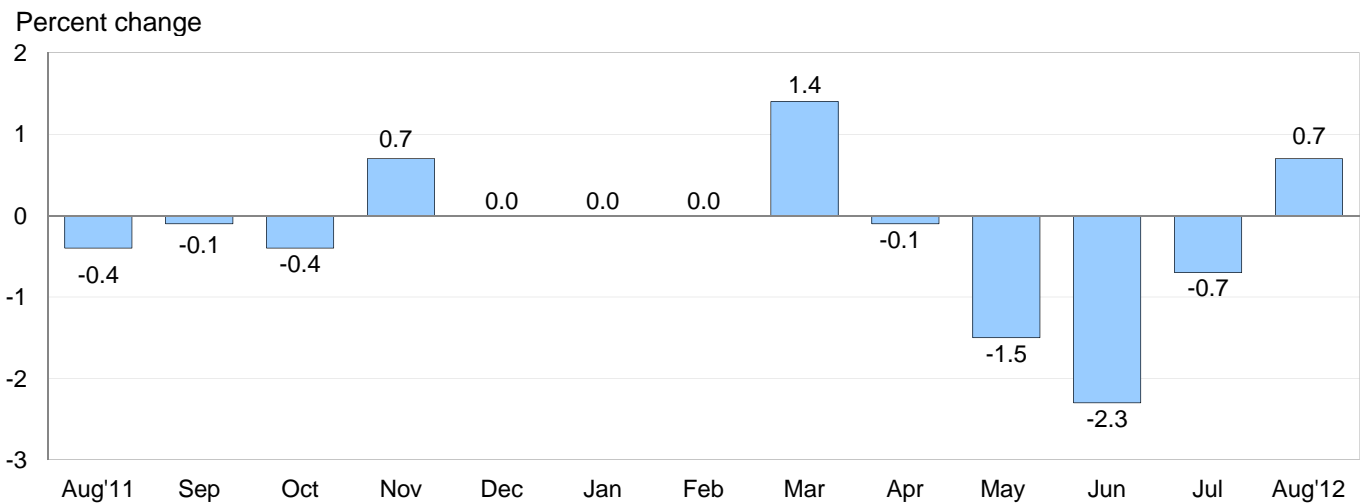
USDL-12-1832

Technical information: (202) 691-7101 • MXPinfo@bls.gov • www.bls.gov/mxp  
Media contact: (202) 691-5902 • PressOffice@bls.gov

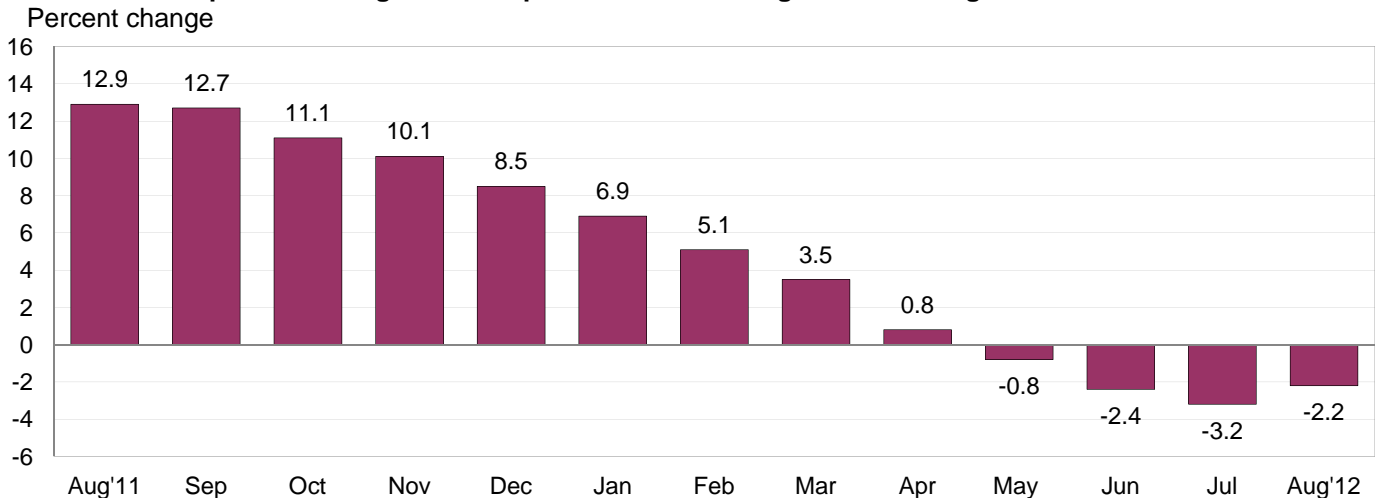
### U.S. IMPORT AND EXPORT PRICE INDEXES – AUGUST 2012

U.S. import prices rose 0.7 percent in August, the U.S. Bureau of Labor Statistics reported today, after declining 0.7 percent the previous month. The August increase was the first advance in overall import prices since a 1.4 percent rise in March. Export prices also increased in August, rising 0.9 percent following a 0.4 percent advance in July.

**Chart 1. One-month percent change in the Import Price Index: August 2011 – August 2012**



**Chart 2. 12-month percent change in the Import Price Index: August 2011 – August 2012**



**All Imports:** Import prices rose 0.7 percent in August, the first monthly increase since March. The August advance followed a 4.4 percent decline over the previous four months. In August, higher fuel prices more than offset a decrease in the price index for nonfuel imports. Despite the August increase, import prices decreased 2.2 percent over the past year. In contrast, import prices had increased 12.9 percent between August 2010 and August 2011.

**Fuel Imports:** Prices for imported fuel advanced 4.1 percent in August following declines in each of the four previous months. Higher prices for petroleum and natural gas, up 4.1 percent and 6.8 percent, respectively, each contributed to the August increase in fuel prices. Even with the August increase, fuel prices fell 7.4 percent over the past 12 months, led by a 6.4 percent drop in petroleum prices and a 33.2 percent decrease in natural gas prices.

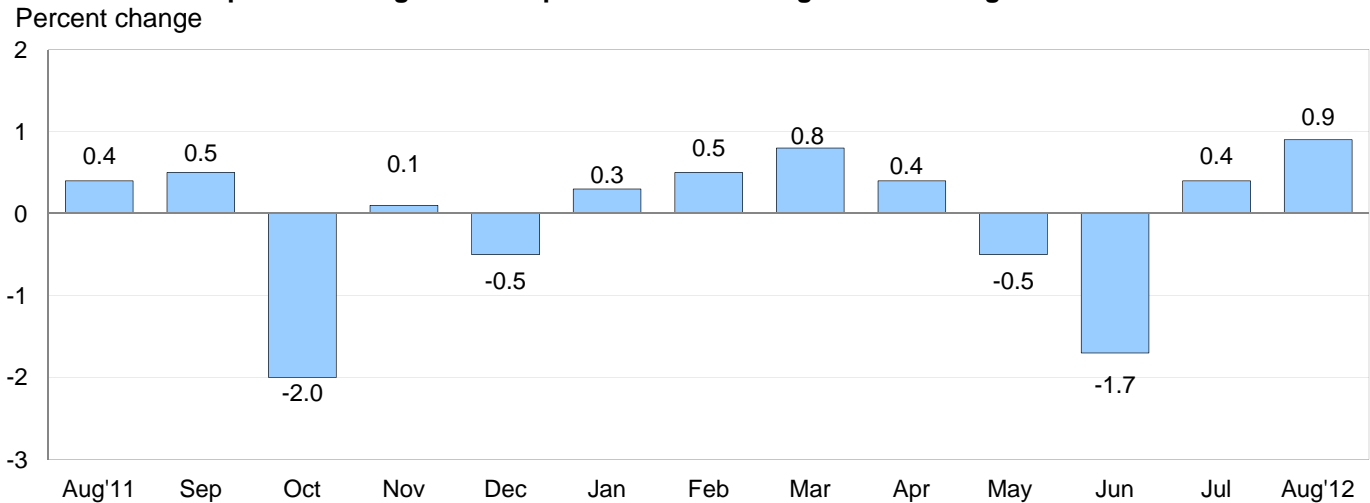
**All Imports Excluding Fuel:** The price index for nonfuel imports continued a recent downward trend, falling 0.2 percent after declines of 0.4 percent in July, 0.3 percent in June, and 0.1 percent in May. The recent decreases left nonfuel import prices 0.5 percent lower for the year ended in August, the first 12-month drop for the index since a 1.1 percent decline for the November 2008-09 period. The August decrease was led by lower prices for consumer goods, nonfuel industrial supplies and materials, foods, feeds, and beverages, and capital goods.

**Table A. Percent changes**

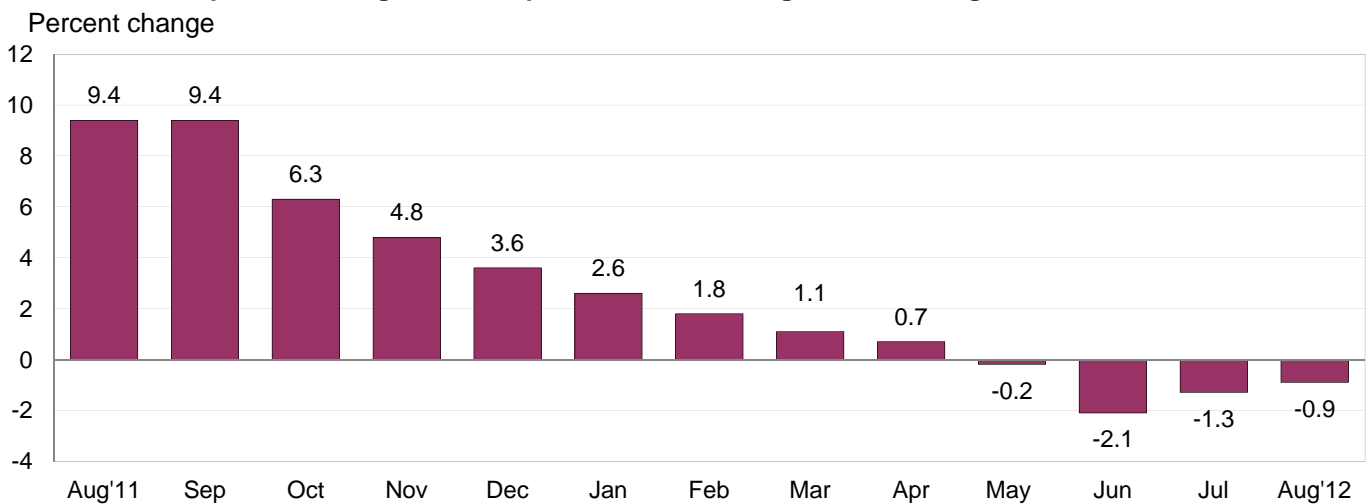
Month	IMPORTS			EXPORTS		
	All imports	Fuel imports	Nonfuel imports	All exports	Agricultural exports	Non-agricultural exports
<b>2011</b>						
August.....	-0.4	-2.1	0.2	0.4	1.6	0.3
September.....	-0.1	-1.0	0.2	0.5	1.9	0.3
October.....	-0.4	-0.6	-0.2	-2.0	-6.5	-1.4
November.....	0.7	3.4	-0.2	0.1	1.7	-0.2
December.....	0.0	-0.4	0.1	-0.5	-2.3	-0.2
<b>2012</b>						
January.....	0.0	-0.2	0.2	0.3	1.1	0.2
February.....	0.0	-0.1	0.0	0.5	-0.4	0.6
March.....	1.4	4.4	0.4	0.8	2.4	0.5
April.....	-0.1	-0.9	0.2	0.4	2.0	0.2
May.....	-1.5	-5.6	-0.1	-0.5	0.5	-0.6 <sup>r</sup>
June.....	-2.3 <sup>r</sup>	-8.3 <sup>r</sup>	-0.3	-1.7	-3.5 <sup>r</sup>	-1.5
July.....	-0.7 <sup>r</sup>	-1.7 <sup>r</sup>	-0.4	0.4 <sup>r</sup>	6.3 <sup>r</sup>	-0.3
August.....	0.7	4.1	-0.2	0.9	5.1	0.4
Aug. 2010 to 2011.....	12.9	40.3	5.4	9.4	23.2	8.0
Aug. 2011 to 2012.....	-2.2	-7.4	-0.5	-0.9	7.7	-1.9

r Revised

**Chart 3. One-month percent change in the Export Price Index: August 2011 – August 2012**



**Chart 4. 12-month percent change in the Export Price Index: August 2011 – August 2012**



**All Exports:** Export prices increased 0.9 percent in August following a 0.4 percent advance in July and a 1.7 percent drop in June. The August increase in overall export prices was the largest monthly rise since the index advanced 1.5 percent in March 2011. Higher agricultural and nonagricultural prices each contributed to the August increase. For the year ended in August, however, export prices fell 0.9 percent.

**Agricultural Exports:** Agricultural prices rose 5.1 percent in August after a 6.3 percent increase in July. Both advances were led by higher prices for corn, soybeans, and wheat. In August, corn prices rose 11.1 percent, soybeans prices 5.6 percent, and wheat prices 9.0 percent. The price index for agricultural exports increased 7.7 percent for the year ended in August, as higher prices for soybeans, corn, and wheat more than offset lower cotton prices.

**All Exports Excluding Agriculture:** Prices for nonagricultural exports advanced 0.4 percent in August following a 0.3 percent decline the previous month. Rising prices for nonagricultural supplies and materials drove the August increase, more than compensating for declining capital goods and automotive vehicles prices. The price index for nonagricultural exports fell 1.9 percent over the past year.

## SELECTED AUGUST HIGHLIGHTS

### Import Prices

**Imports by Locality of Origin:** Prices for imports from China and from Japan recorded no change in August. Import prices from Canada advanced 1.6 percent and prices for imports from Mexico ticked up 0.1 percent in August, led by higher fuel prices. Despite the August increase, prices for imports from Canada fell 5.0 percent over the past year, while import prices from Mexico declined 2.9 percent. The price index for imports from the European Union fell 0.4 percent as a 0.5 percent drop in prices for manufactured articles more than offset higher fuel prices.

**Nonfuel Import Highlights:** The price index for nonfuel industrial supplies and materials fell 0.4 percent in August after declining 1.8 percent in July. A 1.0 percent drop in unfinished metals prices and a 0.3 percent decline in chemicals prices each contributed to the August decrease. Finished goods prices mostly fell in August, with consumer goods prices declining 0.3 percent and capital goods prices edging down 0.1 percent. Prices for automotive vehicles were unchanged in August. Foods, feeds, and beverages prices declined 0.9 percent in August, led by a 2.1 percent drop in fish and shellfish prices and a 2.7 percent decline in vegetable prices.

**Transportation Services:** Import air passenger fares declined 5.5 percent in August after falling 3.2 percent the previous month. The August drop was the largest monthly decline since a 5.6 percent decrease in January 2009, and was led by an 8.0 percent fall in European fares. Despite the recent declines, import air passenger fares increased 2.5 percent for the year ended in August. The price index for import air freight decreased 1.6 percent in August and 6.8 percent over the past year.

### Export Prices

**Nonagricultural Export Highlights:** Prices for nonagricultural industrial supplies and materials led the increase in nonagricultural prices in August, rising 1.2 percent. A 4.6 percent advance in fuel prices was the main contributor to the overall rise in the price index for nonagricultural supplies and materials. In contrast, finished goods prices for the most part decreased. Capital goods prices fell 0.2 percent, driven by a 0.5 percent decline in computers, peripherals, and semiconductor prices, while automotive vehicles prices decreased 0.2 percent, led by a 0.4 percent drop in passenger cars prices. The price index for consumer goods recorded no change in August.

**Transportation Services:** Export air passenger fares rose 2.3 percent in August, driven by a 26.4 percent jump in the index for Asian fares. The August increase in overall fares followed a 4.8 percent increase in July. Despite not recording a monthly decline since a 0.8 percent drop in March, export air passenger fares fell 2.2 percent for the year ended in August. Export air freight prices decreased 1.2 percent in August and 1.8 percent over the past 12 months.

#### Announcement

Beginning with the July Import-Export Price Indexes data released last month, the import price indexes by locality of origin were expanded to include price indexes for select industry areas. These new indexes are available at <http://www.bls.gov/web/ximpim/ippsloor.htm>. In total, 249 indexes were added across the various localities, including 31 new price indexes for imports from China, and 20 new price indexes for imports from the European Union.

**Import and Export Price Index data for September 2012 are scheduled for release on Thursday, October 11, 2012 at 8:30 a.m. (EDT).**

**Table 1. U.S. import price indexes and percent changes for selected categories of goods: August 2011 to August 2012**

[2000=100, unless otherwise noted]

Description	End Use	Relative importance July 2012 <sup>1</sup>	Index		Percent change				
			July 2012	Aug. 2012	Annual Aug. 2011 to Aug. 2012	Monthly			
						Apr. 2012 to May 2012	May 2012 to June 2012	June 2012 to July 2012	July 2012 to Aug. 2012
<b>All commodities</b> .....		100.000	137.8	138.8	-2.2	-1.5	-2.3	-0.7	0.7
<b>All imports excluding food and fuels (Dec. 2010=100)</b> .....		72.739	103.3	103.1	-0.3	0.0	-0.3	-0.4	-0.2
<b>All imports excluding petroleum</b> .....		78.862	115.9	115.7	-0.9	-0.1	-0.3	-0.3	-0.2
<b>All imports excluding fuels (Dec. 2001=100)</b> ..		77.902	120.3	120.0	-0.5	-0.1	-0.3	-0.4	-0.2
<b>Foods, feeds, &amp; beverages</b> .....	0	5.163	170.1	168.5	-3.4	-0.8	-0.7	-1.0	-0.9
Agricultural foods, feeds & beverages, excluding distilled beverages.....	00	3.996	191.3	189.8	-3.2	-0.6	-0.9	-1.1	-0.8
Nonagricultural foods (fish, distilled beverages).....	01	1.167	122.3	120.5	-3.8	-1.5	0.1	-0.6	-1.5
<b>Industrial supplies &amp; materials</b> .....	1	35.488	241.5	247.3	-6.3	-3.7	-5.8	-1.8	2.4
Industrial supplies & materials excluding petroleum.....		14.350	163.1	163.0	-6.5	-0.2	-1.1	-1.3	-0.1
Industrial supplies & materials excluding fuels (Dec. 2001=100).....		13.390	187.6	186.8	-4.5	0.0	-1.4	-1.8	-0.4
Industrial supplies & materials, durable.....		7.857	175.0	174.2	-7.4	-0.7	-1.8	-1.0	-0.5
Industrial supplies & materials nondurable excluding petroleum.....		5.534	149.1	149.6	-5.4	0.5	-0.2	-1.7	0.3
Fuels & lubricants.....	10	22.099	312.9	325.8	-7.4	-5.6	-8.3	-1.7	4.1
Petroleum & petroleum products.....	100	21.139	350.6	365.1	-6.4	-5.7	-8.7	-2.1	4.1
Crude.....	10000	16.019	361.4	374.0	-4.2	-4.9	-8.9	-2.5	3.5
Fuels, n.e.s.-coals & gas.....	101	0.660	87.7	92.7	-30.4	-3.1	5.7	10.2	5.7
Gas-natural.....	10110	0.554	73.7	78.7	-33.2	-3.8	7.9	12.5	6.8
Paper & paper base stocks.....	11	0.606	113.9	113.2	-4.4	1.1	-0.3	-0.2	-0.6
Materials associated with nondurable supplies & materials.....	12	5.019	176.9	176.4	0.8	0.9	-0.8	-3.5	-0.3
Selected building materials.....	13	1.057	138.8	139.8	6.9	1.0	1.2	0.5	0.7
Unfinished metals related to durable goods.....	14	3.609	258.1	255.6	-15.6	-1.5	-3.6	-2.0	-1.0
Finished metals related to durable goods. . .	15	1.573	162.1	161.4	-1.7	-0.4	-1.0	0.2	-0.4
Nonmetals related to durable goods.....	16	1.526	114.5	114.2	-1.1	-0.2	-0.5	-0.4	-0.3
<b>Capital goods</b> .....	2	22.753	93.2	93.1	0.2	-0.1	-0.1	0.0	-0.1
Electric generating equipment.....	20	2.959	119.3	119.3	0.6	-0.1	-0.3	0.3	0.0
Nonelectrical machinery.....	21	18.101	86.1	86.0	-0.5	-0.1	0.0	-0.2	-0.1
Transportation equipment excluding motor vehicles (Dec. 2001=100).....	22	1.693	134.0	134.0	6.1	0.1	0.1	0.1	0.0
<b>Automotive vehicles, parts &amp; engines</b> .....	3	11.893	114.8	114.8	1.4	-0.1	0.0	0.3	0.0
<b>Consumer goods, excluding automotives</b> ..	4	24.703	107.5	107.2	0.8	0.0	-0.1	-0.1	-0.3
Nondurables, manufactured.....	40	11.884	114.8	114.7	1.9	-0.1	0.0	-0.1	-0.1
Durables, manufactured.....	41	11.495	99.6	99.5	-0.3	-0.1	0.0	-0.2	-0.1
Nonmanufactured consumer goods.....	42	1.324	118.3	115.4	1.2	0.3	-0.3	-0.8	-2.5

<sup>1</sup> Relative importance figures are based on 2010 trade values.

NOTES: Data may be revised in each of the three months after original publication.

Dash = Not available

**Table 2. U.S. export price indexes and percent changes for selected categories of goods: August 2011 to August 2012**

[2000=100, unless otherwise noted]

Description	End Use	Relative importance July 2012 <sup>1</sup>	Index		Percent change				
			July 2012	Aug. 2012	Annual	Monthly			
					Aug. 2011 to Aug. 2012	Apr. 2012 to May 2012	May 2012 to June 2012	June 2012 to July 2012	July 2012 to Aug. 2012
<b>All commodities</b> .....		100.000	132.2	133.4	-0.9	-0.5	-1.7	0.4	0.9
<b>Agricultural commodities</b> .....		11.518	217.3	228.3	7.7	0.5	-3.5	6.3	5.1
<b>All exports excluding food and fuels (Dec. 2010=100)</b> .....		81.196	102.1	102.1	-1.4	-0.2	-0.8	-0.4	0.0
<b>Nonagricultural commodities</b> .....		88.483	126.1	126.6	-1.9	-0.6	-1.5	-0.3	0.4
<b>Foods, feeds, &amp; beverages</b> .....	0	10.690	219.7	230.3	10.2	0.7	-3.0	6.8	4.8
Agricultural foods, feeds & beverages, excluding distilled beverages.....	00	9.967	223.2	234.6	10.7	0.8	-3.3	7.3	5.1
Nonagricultural foods (fish, distilled beverages).....	01	0.723	189.7	192.7	4.3	-1.6	1.0	-0.2	1.6
<b>Industrial supplies &amp; materials</b> .....	1	33.418	177.6	180.1	-6.1	-1.8	-3.9	-0.4	1.4
Industrial supplies & materials, durable.....		12.083	182.3	181.2	-5.7	-0.7	-2.5	-0.7	-0.6
Industrial supplies & materials, nondurable.....		21.334	175.9	180.2	-6.3	-2.4	-4.8	-0.2	2.4
Agricultural industrial supplies & materials...	10	1.551	188.8	198.1	-8.2	-1.7	-4.6	-0.2	4.9
<b>Nonagricultural industrial supplies &amp; materials</b> .....		31.867	177.4	179.6	-6.0	-1.9	-3.9	-0.4	1.2
Fuels & lubricants.....	11	8.115	249.9	261.5	-8.0	-4.7	-8.7	0.6	4.6
Nonagricultural supplies & materials excluding fuels & building materials.....	12	22.796	169.6	169.6	-5.6	-0.8	-2.3	-0.8	0.0
Selected building materials.....	13	0.956	118.5	118.7	2.9	-0.3	0.7	0.3	0.2
<b>Capital goods</b> .....	2	34.773	105.6	105.4	0.7	0.1	-0.2	-0.2	-0.2
Electrical generating equipment.....	20	3.558	113.3	113.7	-0.4	0.8	0.2	-0.9	0.4
Nonelectrical machinery.....	21	25.187	94.9	94.6	0.3	-0.1	-0.2	-0.1	-0.3
Transportation equipment excluding motor vehicles (Dec. 2001=100).....	22	6.028	149.2	149.1	2.8	0.1	0.0	0.1	-0.1
<b>Automotive vehicles, parts &amp; engines</b> .....	3	8.302	113.1	112.9	1.6	0.0	-0.1	0.2	-0.2
<b>Consumer goods, excluding automotives</b> ..	4	12.818	116.3	116.3	-0.8	0.5	0.1	-0.6	0.0
Nondurables, manufactured.....	40	5.956	114.7	114.8	-0.1	0.1	0.0	-0.2	0.1
Durables, manufactured.....	41	5.420	114.6	114.5	1.3	1.1	-0.2	-0.3	-0.1

<sup>1</sup> Relative importance figures are based on 2010 trade values.

NOTES: Data may be revised in each of the three months after original publication.

Dash = Not available

**Table 3. U.S. import price indexes and percent changes for selected categories of goods: August 2011 to August 2012**

[December 2005=100, unless otherwise noted]

Description	NAICS	Relative importance July 2012 <sup>1</sup>	Index		Percent change				
			July 2012	Aug. 2012	Annual	Monthly			
					Aug. 2011 to Aug. 2012	Apr. 2012 to May 2012	May 2012 to June 2012	June 2012 to July 2012	July 2012 to Aug. 2012
<b>Nonmanufactured articles.....</b>		19.091	154.2	158.9	-6.4	-4.7	-7.8	-2.1	3.0
<b>Agriculture, forestry, fishing and hunting...</b>	11	1.846	169.1	166.2	-5.9	-1.0	-1.9	-1.5	-1.7
Crop production.....	111	1.311	175.6	174.2	-4.2	-0.8	-2.4	-1.5	-0.8
<b>Mining.....</b>	21	17.245	152.4	157.8	-6.5	-5.1	-8.4	-2.1	3.5
Mining (except oil and gas) (Dec. 2006=100).....	212	0.334	143.5	143.6	-8.9	-0.2	-1.0	-0.3	0.1
<b>Manufactured articles.....</b>		80.458	117.1	117.3	-1.0	-0.6	-0.7	-0.3	0.2
<b>Manufactured goods, part 1.....</b>	31	11.086	124.7	124.3	0.7	-0.2	-0.2	-0.7	-0.3
Food manufacturing.....	311	3.083	158.6	157.5	0.1	-0.5	-0.5	-2.7	-0.7
Beverage and tobacco product manufacturing.....	312	0.859	111.3	111.3	-0.3	0.4	-0.1	-0.4	0.0
Textile mills (Dec. 2011=100).....	313	0.410	101.4	101.4	-	0.1	-0.3	-0.1	0.0
Textile product mills.....	314	0.888	115.8	115.8	-1.8	-0.5	-0.1	-0.2	0.0
Apparel manufacturing.....	315	4.180	112.1	111.7	0.5	-0.2	-0.1	0.2	-0.4
Leather and allied product manufacturing. . .	316	1.665	119.5	119.6	4.5	0.1	0.1	0.0	0.1
<b>Manufactured goods, part 2.....</b>	32	17.921	135.8	138.1	-2.4	-1.9	-2.3	-0.7	1.7
Wood product manufacturing.....	321	0.643	117.5	118.7	9.4	1.4	1.5	1.0	1.0
Paper manufacturing.....	322	1.114	111.2	110.7	-1.9	0.6	-0.2	0.0	-0.4
Petroleum and coal products manufacturing.....	324	4.404	158.3	168.6	-10.7	-8.0	-7.3	-0.1	6.5
Chemical manufacturing.....	325	8.881	133.8	133.9	0.5	0.4	-0.8	-1.3	0.1
Plastics and rubber products manufacturing.....	326	1.934	127.4	127.3	1.9	0.2	-0.1	-0.2	-0.1
Nonmetallic mineral product manufacturing.....	327	0.855	130.2	130.1	1.7	0.2	0.0	0.2	-0.1
<b>Manufactured goods, part 3.....</b>	33	51.450	109.7	109.4	-0.9	-0.2	-0.3	-0.1	-0.3
Primary metal manufacturing.....	331	4.211	170.8	168.8	-13.3	-1.6	-3.3	-1.8	-1.2
Fabricated metal product manufacturing. . .	332	2.607	129.7	129.5	1.4	-0.2	-0.2	0.2	-0.2
Machinery manufacturing.....	333	5.745	120.9	120.8	1.3	0.2	-0.2	-0.2	-0.1
Computer and electronic product manufacturing.....	334	15.769	82.2	82.1	-1.3	-0.1	0.0	-0.1	-0.1
Electrical equipment, appliance, and component manufacturing.....	335	3.928	118.6	118.6	2.0	0.1	-0.1	0.3	0.0
Transportation equipment manufacturing. . .	336	12.575	111.9	112.0	2.0	-0.1	0.0	0.4	0.1
Furniture and related product manufacturing.....	337	1.340	113.6	113.3	1.4	0.1	0.7	-0.4	-0.3
Miscellaneous manufacturing.....	339	5.276	122.2	121.1	-0.8	-0.2	0.1	-0.2	-0.9

<sup>1</sup> Relative importance figures are based on 2010 trade values.

NOTES: Data may be revised in each of the three months after original publication.

Dash = Not available

**Table 4. U.S. export price indexes and percent changes for selected categories of goods: August 2011 to August 2012**

[December 2005=100, unless otherwise noted]

Description	NAICS	Relative importance July 2012 <sup>1</sup>	Index		Percent change				
			July 2012	Aug. 2012	Annual	Monthly			
					Aug. 2011 to Aug. 2012	Apr. 2012 to May 2012	May 2012 to June 2012	June 2012 to July 2012	July 2012 to Aug. 2012
<b>Nonmanufactured articles.....</b>		8.637	171.0	179.9	-0.1	0.1	-5.6	8.0	5.2
<b>Agriculture, forestry, fishing and hunting...</b>	11	6.747	209.7	222.5	8.9	0.6	-5.8	10.1	6.1
Crop production.....	111	6.321	218.6	230.8	9.1	1.1	-6.3	11.0	5.6
<b>Mining.....</b>	21	1.890	94.9	96.7	-23.4	-1.5	-4.8	1.0	1.9
Mining (except oil and gas).....	212	1.360	119.0	118.9	-20.3	-2.7	-2.0	-0.4	-0.1
<b>Manufactured articles.....</b>		88.442	119.8	120.3	-0.6	-0.5	-1.2	-0.2	0.4
<b>Manufactured goods, part 1.....</b>	31	7.213	147.0	150.0	3.7	0.3	-0.3	0.1	2.0
Food manufacturing.....	311	5.036	168.4	172.3	5.7	0.4	-0.4	0.3	2.3
Beverage and tobacco product manufacturing.....	312	0.580	121.2	126.2	10.1	0.4	0.3	1.0	4.1
Apparel manufacturing.....	315	0.428	121.7	121.7	6.6	0.0	1.5	0.0	0.0
<b>Manufactured goods, part 2.....</b>	32	26.003	130.7	132.8	-2.4	-1.8	-3.2	-0.6	1.6
Wood product manufacturing.....	321	0.404	113.6	114.2	0.4	-0.4	-0.4	-0.4	0.5
Paper manufacturing.....	322	1.852	119.4	119.7	-4.8	-1.2	0.5	0.4	0.3
Petroleum and coal products manufacturing.....	324	5.943	159.0	167.4	-3.5	-5.3	-9.1	0.4	5.3
Chemical manufacturing.....	325	14.842	129.0	129.9	-2.6	-0.8	-1.7	-1.2	0.7
Plastics and rubber products manufacturing.....	326	2.197	117.3	117.3	2.0	0.1	0.0	-0.4	0.0
Nonmetallic mineral product manufacturing.....	327	0.765	112.5	112.4	2.0	0.0	0.8	0.1	-0.1
<b>Manufactured goods, part 3.....</b>	33	55.225	112.9	112.6	-0.2	0.1	-0.4	-0.3	-0.3
Primary metal manufacturing.....	331	4.719	167.8	165.5	-9.2	-1.4	-3.0	-0.6	-1.4
Fabricated metal product manufacturing. ....	332	2.682	131.6	131.9	3.1	0.5	0.1	0.6	0.2
Machinery manufacturing.....	333	11.175	120.5	120.5	2.5	0.0	0.0	0.1	0.0
Computer and electronic product manufacturing.....	334	14.440	89.5	89.0	-0.7	0.0	-0.3	-0.4	-0.6
Electrical equipment, appliance, and component manufacturing.....	335	3.221	111.9	112.1	-1.1	0.4	0.1	-0.8	0.2
Transportation equipment manufacturing....	336	13.520	116.9	116.8	2.0	0.1	-0.1	0.1	-0.1
Furniture and related product manufacturing (Dec. 2011=100).....	337	0.300	103.0	102.9	-	0.0	0.4	0.0	-0.1
Miscellaneous manufacturing.....	339	5.167	121.7	121.5	-2.2	1.0	0.2	-1.0	-0.2

1 Relative importance figures are based on 2010 trade values.

NOTES: Data may be revised in each of the three months after original publication.

Dash = Not available



**Table 5. U.S. import price indexes and percent changes for selected categories of goods: August 2011 to August 2012**

[2000=100, unless otherwise noted]

Description	Harmonized system	Relative importance July 2012 <sup>1</sup>	Index		Percent change				
			July 2012	Aug. 2012	Annual	Monthly			
					Aug. 2011 to Aug. 2012	Apr. 2012 to May 2012	May 2012 to June 2012	June 2012 to July 2012	July 2012 to Aug. 2012
<b>Live animals; animal products.....</b>	I	1.172	163.9	159.7	-4.8	-1.9	0.1	-0.6	-2.6
Meat and edible meat offal.....	02	0.277	216.4	218.2	1.6	0.0	0.7	1.1	0.8
Fish and crustaceans, molluscs and other aquatic invertebrates.....	03	0.605	117.2	113.5	-9.8	-2.5	-0.3	-1.3	-3.2
<b>Vegetable products.....</b>	II	1.716	213.4	211.3	0.5	-1.0	-2.0	-3.4	-1.0
Edible vegetables, roots, and tubers.....	07	0.310	302.5	296.8	-5.7	0.2	0.9	-6.1	-1.9
Edible fruit and nuts; peel of citrus fruit or melons.....	08	0.473	116.8	114.2	-11.7	-4.2	-3.8	-0.8	-2.2
Coffee, tea, mate and spices.....	09	0.428	273.0	270.3	0.8	-1.5	-1.8	2.2	-1.0
<b>Animal or vegetable fats and oils (Dec. 2009=100).....</b>	III	0.254	127.3	127.3	-11.4	0.9	-4.7	-2.6	0.0
<b>Prepared foodstuffs, beverages, and tobacco.....</b>	IV	2.415	156.5	156.7	-0.8	0.1	-0.2	-0.6	0.1
Cocoa and cocoa preparations (Dec. 2009=100).....	18	0.177	80.4	83.2	-16.2	-1.2	-1.3	-4.9	3.5
Preparations of cereals, flour, starch or milk; bakers' wares (Dec. 2007=100).....	19	0.234	127.7	128.0	0.3	0.2	-0.2	1.2	0.2
Preparations of vegetables, fruit, nuts, or other parts of plants.....	20	0.352	170.5	170.1	4.7	-0.6	-1.0	-0.2	-0.2
Beverages, spirits, and vinegar.....	22	0.810	121.5	121.4	-0.3	0.5	-0.2	-0.6	-0.1
<b>Mineral products.....</b>	V	21.840	315.4	328.0	-7.2	-5.4	-8.1	-1.7	4.0
Mineral fuels, oils and residuals, bituminous substances and mineral waxes.....	27	21.525	311.6	324.3	-7.1	-5.5	-8.2	-1.7	4.1
<b>Products of the chemical or allied industries.....</b>	VI	8.447	149.8	150.1	1.8	0.8	-0.3	-0.7	0.2
Inorganic chemicals.....	28	0.993	390.5	395.1	5.9	5.2	3.6	1.8	1.2
Organic chemicals.....	29	2.486	138.2	138.7	0.5	-0.2	-1.4	0.2	0.4
Pharmaceutical products.....	30	3.085	116.9	116.9	4.7	0.1	-0.1	-0.4	0.0
Fertilizers (Dec. 2009=100).....	31	0.442	136.2	136.4	-8.5	6.7	-2.6	-12.6	0.1
Tanning extracts; dye, pigments, varnish, paints & putty (Dec. 2011=100).....	32	0.183	103.1	102.8	-	-0.7	-0.8	-2.1	-0.3
Essential oils and resinoids (Dec. 2001=100).....	33	0.424	124.9	124.9	-1.2	-0.4	0.0	0.0	0.0
Miscellaneous chemical products.....	38	0.481	102.1	102.0	-5.3	-0.1	-1.2	-0.3	-0.1
<b>Plastics and articles thereof; rubber and articles thereof.....</b>	VII	3.142	151.2	150.5	-1.2	-0.1	-0.5	-1.0	-0.5
Plastics and articles thereof.....	39	1.903	142.3	141.5	0.1	0.0	-0.3	-1.1	-0.6
Rubber and articles thereof.....	40	1.239	168.3	167.9	-3.2	-0.3	-0.8	-0.8	-0.2
<b>Raw hides, skins, leather, furskins, travel goods, etc.....</b>	VIII	0.600	126.3	126.3	3.5	0.1	0.2	-0.1	0.0
Articles of leather; travel goods, bags, etc. of various materials.....	42	0.551	127.1	127.1	3.9	0.1	0.2	-0.1	0.0
<b>Wood, wood charcoal, cork, straw, basketware and wickerwork.....</b>	IX	0.677	142.4	143.8	9.7	1.3	1.4	1.2	1.0
<b>Woodpulp, recovered paper, and paper products.....</b>	X	1.216	113.7	113.4	-1.6	0.5	-0.1	-0.3	-0.3
Pulp wood, waste paper, and paperboard (Dec. 2011=100).....	47	0.189	103.9	101.9	-	4.3	0.4	-0.1	-1.9
Paper and paperboard; articles of paper pulp, paper or paperboard.....	48	0.811	108.1	108.0	-1.1	-0.1	-0.4	-0.1	-0.1
<b>Textile and textile articles.....</b>	XI	5.331	115.4	115.0	-0.1	-0.3	-0.1	0.0	-0.3
Articles of apparel and clothing accessories, knitted or crocheted.....	61	2.067	106.3	105.7	-0.9	-0.6	-0.2	0.3	-0.6

See footnotes at end of table.

**Table 5. U.S. import price indexes and percent changes for selected categories of goods: August 2011 to August 2012 — Continued**  
 [2000=100, unless otherwise noted]

Description	Harmonized system	Relative importance July 2012 <sup>1</sup>	Index		Percent change				
			July 2012	Aug. 2012	Annual	Monthly			
					Aug. 2011 to Aug. 2012	Apr. 2012 to May 2012	May 2012 to June 2012	June 2012 to July 2012	July 2012 to Aug. 2012
Articles of apparel and clothing accessories, not knitted or crocheted.....	62	1.964	118.1	117.8	1.6	-0.1	0.2	-0.2	-0.3
Made-up or worn textile articles.....	63	0.642	108.4	108.4	-3.0	-0.6	-0.1	-0.3	0.0
<b>Headgear, umbrellas, artificial flowers, etc. . .</b>	XII	1.365	119.0	119.1	4.7	0.1	0.0	0.3	0.1
Footwear and parts of such articles.....	64	1.161	118.0	118.2	4.6	0.2	0.0	0.3	0.2
<b>Stone, plaster, cement, asbestos, ceramics, glass etc.....</b>	XIII	0.774	132.2	132.1	1.9	0.4	0.2	0.1	-0.1
Articles of stone, plaster, cement, asbestos, or mica (Dec. 2001=100).....	68	0.249	125.8	125.7	2.8	0.2	0.6	0.3	-0.1
Ceramic products.....	69	0.232	142.1	142.1	0.7	0.0	0.0	0.0	0.0
Glass and glassware.....	70	0.293	127.1	126.8	2.0	0.8	-0.2	0.0	-0.2
<b>Pearls, stones, precious metals, imitation jewelry, and coins.....</b>	XIV	3.300	198.6	195.5	-4.4	-1.4	-2.6	-0.3	-1.6
<b>Base metals and articles of base metals.....</b>	XV	4.892	186.0	185.3	-8.2	-0.6	-1.6	-1.4	-0.4
Iron and steel.....	72	1.117	235.8	232.5	-11.4	0.3	-2.4	-2.4	-1.4
Articles of iron or steel.....	73	1.447	161.2	160.6	0.1	-0.2	-0.5	0.2	-0.4
Copper and articles thereof.....	74	0.438	334.6	340.1	-18.9	-1.3	-4.0	-4.2	1.6
Nickel and articles thereof (Dec. 2009=100)...	75	0.130	98.6	97.4	-26.7	-5.6	-3.3	-2.3	-1.2
Aluminum and articles thereof.....	76	0.698	134.9	133.4	-13.7	-1.8	-2.1	-2.0	-1.1
Tools, implements, cutlery, spoons and forks, of base metal; parts thereof.....	82	0.370	128.2	128.4	4.0	0.5	-0.2	0.0	0.2
Miscellaneous articles of base metal.....	83	0.420	135.5	137.0	3.9	0.1	0.3	0.0	1.1
<b>Machinery, electrical equipment, TV image and sound recorders, parts, etc.....</b>	XVI	25.255	85.7	85.6	-0.2	-0.1	0.0	-0.1	-0.1
Machinery and mechanical appliances; parts thereof.....	84	12.727	89.7	89.6	1.1	0.1	0.0	-0.1	-0.1
Electrical machinery and equip, sound and TV recorders & reproducers, parts.....	85	12.528	81.9	81.9	-1.3	-0.2	-0.1	0.0	0.0
<b>Vehicles, aircraft, vessels and associated transport equipment.....</b>	XVII	10.485	116.2	116.3	1.5	-0.1	0.0	0.3	0.1
Motor vehicles and their parts.....	87	9.666	115.3	115.3	1.3	0.0	0.0	0.3	0.0
Aircraft, spacecraft, and parts thereof (Dec. 2002=100).....	88	0.723	118.7	118.7	2.4	0.1	0.2	0.4	0.0
<b>Optical, photo, measuring, medical &amp; musical instruments; &amp; timepieces.....</b>	XVIII	3.287	104.5	103.9	-1.3	-0.2	-0.1	0.2	-0.6
Optical, photographic, measuring and medical instruments.....	90	3.026	102.0	101.3	-1.6	-0.2	-0.1	0.2	-0.7
Clocks and watches and parts thereof.....	91	0.199	130.4	130.4	1.5	0.2	0.2	0.5	0.0
<b>Miscellaneous manufactured articles.....</b>	XX	3.775	112.6	112.5	1.7	0.1	0.4	-0.2	-0.1
Furniture & stuffed furnishings; lamps & lighting fittings, nesoi; prefab bldgs.....	94	2.013	116.4	116.1	1.6	0.0	0.4	-0.1	-0.3
Toys, games and sports equipment; parts and accessories thereof.....	95	1.554	105.0	105.1	1.7	0.3	0.1	-0.4	0.1
Miscellaneous manufactured articles.....	96	0.208	136.5	136.5	2.6	-0.1	2.7	-0.1	0.0

<sup>1</sup> Relative importance figures are based on 2010 trade values.

NOTES: Data may be revised in each of the three months after original publication.

Dash = Not available

**Table 6. U.S. export price indexes and percent changes for selected categories of goods: August 2011 to August 2012**

[2000=100, unless otherwise noted]

Description	Harmoni- zied system	Relative importance July 2012 <sup>1</sup>	Index		Percent change				
			July 2012	Aug. 2012	Annual	Monthly			
					Aug. 2011 to Aug. 2012	Apr. 2012 to May 2012	May 2012 to June 2012	June 2012 to July 2012	July 2012 to Aug. 2012
<b>Live animals; animal products.....</b>	I	1.918	203.5	212.1	3.7	-1.0	0.0	0.3	4.2
Meat & edible meat offal (Dec. 2006=100). . .	02	1.147	166.9	166.3	1.6	0.3	-1.4	0.8	-0.4
Fish and crustaceans, molluscs and other aquatic invertebrates.....	03	0.431	207.6	211.5	5.8	-1.0	0.7	-0.1	1.9
<b>Vegetable products.....</b>	II	6.359	268.2	282.5	13.8	1.8	-5.3	11.1	5.3
Edible fruit and nuts; peel of citrus fruit or melons.....	08	0.855	136.1	133.5	0.6	-0.3	1.8	-2.4	-1.9
Cereals.....	10	2.407	310.2	339.4	12.6	-2.1	-5.8	17.4	9.4
Oilseeds and misc. grains, seeds, fruits, plants, straw and fodder.....	12	2.479	305.0	321.4	21.9	4.4	-7.8	14.0	5.4
<b>Animal or vegetable fats and oils (Dec. 2009=100).....</b>	III	0.473	147.1	147.2	-8.1	1.6	-5.5	-0.7	0.1
<b>Prepared foodstuffs, beverages, and tobacco.....</b>	IV	2.776	159.3	167.3	10.9	0.6	0.5	1.0	5.0
Preparations of vegetables, fruit, nuts or other parts of plants (Dec. 2009=100).....	20	0.327	111.5	112.3	2.7	0.4	-0.1	0.5	0.7
Beverages, spirits, and vinegar (Dec. 2008=100).....	22	0.404	109.7	109.7	3.8	0.1	0.0	-0.2	0.0
Residues and waste from the food industries; prepared animal feed.....	23	0.867	247.6	282.4	28.9	2.8	3.0	3.6	14.1
<b>Mineral products.....</b>	V	8.098	294.8	307.5	-8.8	-5.0	-8.0	-0.1	4.3
Mineral fuels, oils and residuals, bituminous substances and mineral waxes.....	27	7.498	290.4	304.2	-8.8	-5.2	-8.4	-0.1	4.8
<b>Products of the chemical or allied industries.....</b>	VI	12.201	153.2	154.1	-1.0	-0.3	-0.4	-0.6	0.6
Inorganic chemicals.....	28	1.014	185.6	185.7	-5.6	-0.4	-0.4	1.3	0.1
Organic chemicals.....	29	3.348	161.6	164.4	-3.2	-1.3	-1.7	-2.1	1.7
Pharmaceutical products.....	30	3.161	123.7	123.9	-1.7	0.1	-0.3	-0.3	0.2
Essential oils and resinoids; perfumery cosmetic or toilet preparations.....	33	0.765	135.8	136.0	1.6	-0.1	0.4	-0.1	0.1
Soap; lubricants; waxes, polishing or scouring products; candles, pastes.....	34	0.470	123.1	123.0	0.2	0.1	0.0	-0.1	-0.1
Miscellaneous chemical products.....	38	1.778	153.0	152.8	1.3	0.1	-0.1	0.0	-0.1
<b>Plastics and articles thereof; rubber and articles thereof.....</b>	VII	5.385	145.5	146.5	-4.6	-0.5	-3.1	-1.8	0.7
Plastics and articles thereof.....	39	4.311	136.3	137.4	-4.2	-0.4	-3.0	-1.7	0.8
Rubber and articles thereof.....	40	1.074	189.7	189.6	-6.1	-0.7	-3.6	-2.1	-0.1
<b>Raw hides, skins, leather, furskins, travel goods, etc.....</b>	VIII	0.371	130.0	132.1	-2.8	0.9	-2.8	-0.1	1.6
<b>Wood, wood charcoal, cork, straw, basketware and wickerwork.....</b>	IX	0.547	110.0	110.0	1.3	-0.6	0.9	-0.3	0.0
<b>Woodpulp, recovered paper, and paper products.....</b>	X	2.330	117.7	115.9	-9.5	-0.9	-0.1	-0.1	-1.5
Woodpulp and recovered paper.....	47	0.638	124.4	116.4	-25.2	-0.9	0.0	-1.3	-6.4
Paper and paperboard; articles of paper pulp, paper or paperboard.....	48	1.232	116.6	117.2	-2.5	-1.4	-0.1	0.1	0.5
Printed material.....	49	0.460	121.6	121.6	2.1	0.1	-0.1	1.1	0.0
<b>Textile and textile articles.....</b>	XI	1.894	124.2	125.2	-10.4	-1.7	-3.1	-0.6	0.8
Cotton, including yarns and woven fabrics thereof.....	52	0.523	129.4	133.5	-32.2	-5.4	-11.1	-2.0	3.2
<b>Stone, plaster, cement, asbestos, ceramics, glass etc.....</b>	XIII	0.749	117.9	117.8	1.7	0.0	0.0	0.1	-0.1
Glass and glassware.....	70	0.403	98.5	98.5	-0.5	0.0	0.0	-0.1	0.0

See footnotes at end of table.

**Table 6. U.S. export price indexes and percent changes for selected categories of goods: August 2011 to August 2012 — Continued**  
 [2000=100, unless otherwise noted]

Description	Harmonized system	Relative importance July 2012 <sup>1</sup>	Index		Percent change				
			July 2012	Aug. 2012	Annual	Monthly			
					Aug. 2011 to Aug. 2012	Apr. 2012 to May 2012	May 2012 to June 2012	June 2012 to July 2012	July 2012 to Aug. 2012
<b>Pearls, stones, precious metals, imitation jewelry, and coins.....</b>	XIV	5.213	275.0	271.4	-5.8	-0.8	-1.5	-0.9	-1.3
<b>Base metals and articles of base metals.....</b>	XV	5.489	171.8	171.6	-6.9	-0.3	-3.5	-0.6	-0.1
Iron and steel.....	72	1.611	202.0	203.3	-11.8	0.2	-6.9	-3.5	0.6
Articles of iron or steel.....	73	1.379	173.6	173.2	1.7	-0.2	-0.5	0.6	-0.2
Copper and articles thereof.....	74	0.647	246.0	242.1	-16.9	-1.7	-7.3	1.5	-1.6
Aluminum and articles thereof.....	76	0.817	123.7	123.2	-10.7	-1.0	-2.2	-1.0	-0.4
Tools, implements, cutlery, spoons and forks, of base metal; parts thereof.....	82	0.396	134.3	134.4	5.5	0.0	0.0	3.9	0.1
Miscellaneous articles of base metal.....	83	0.342	145.8	145.8	7.4	2.7	0.0	0.0	0.0
<b>Machinery, electrical equipment, TV image and sound recorders, parts, etc.....</b>	XVI	27.787	97.0	96.7	0.2	0.1	-0.2	-0.2	-0.3
Machinery and mechanical appliances; parts thereof.....	84	16.180	110.6	110.4	1.7	-0.1	0.1	0.0	-0.2
Electrical machinery and equipment and parts and accessories thereof.....	85	11.607	82.2	81.9	-1.7	0.2	-0.4	-0.7	-0.4
<b>Vehicles, aircraft, vessels and associated transport equipment.....</b>	XVII	11.066	127.0	126.8	2.3	0.1	-0.1	0.2	-0.2
Motor vehicles and their parts.....	87	7.315	113.2	113.0	2.4	0.0	-0.1	0.2	-0.2
<b>Optical, photo, measuring, medical &amp; musical instruments; &amp; timepieces.....</b>	XVIII	5.838	105.9	105.9	0.3	0.6	-0.2	-0.1	0.0
<b>Miscellaneous manufactured articles.....</b>	XX	1.358	110.4	110.3	1.1	0.0	0.1	0.0	-0.1
Furniture; stuffed furnishings; lamps and lighting fittings nesoi;.....	94	0.701	120.0	119.8	-0.6	0.0	0.1	0.1	-0.2
Toys, games and sports equipment; parts and accessories thereof.....	95	0.523	91.2	91.1	1.3	0.0	0.0	0.0	-0.1

1 Relative importance figures are based on 2010 trade values.

NOTES: Data may be revised in each of the three months after original publication.

Dash = Not available

**Table 7. U.S. import price indexes and percent changes by locality of origin: August 2011 to August 2012**  
 [2000=100, unless otherwise noted]

Description	Relative importance July 2012 <sup>1</sup>	Index		Percent change				
		July 2012	Aug. 2012	Annual	Monthly			
				Aug. 2011 to Aug. 2012	Apr. 2012 to May 2012	May 2012 to June 2012	June 2012 to July 2012	July 2012 to Aug. 2012
<b>Industrialized Countries<sup>2</sup></b> .....	100.000	130.1	130.8	-1.9	-0.1	-1.2	0.0	0.5
Nonmanufactured articles.....	11.689	208.9	216.0	-8.3	-2.4	-4.4	3.1	3.4
Manufactured articles.....	87.693	123.7	123.8	-1.0	0.2	-0.7	-0.3	0.1
<b>Other Countries<sup>3</sup></b> .....	100.000	136.9	138.0	-2.2	-1.8	-2.7	-1.2	0.8
Nonmanufactured articles.....	23.780	324.0	333.5	-6.2	-5.2	-8.4	-3.9	2.9
Manufactured articles.....	75.875	110.7	110.8	-1.0	-0.5	-0.7	-0.4	0.1
<b>Canada</b> .....	100.000	146.9	149.2	-5.0	-0.7	-1.9	-0.3	1.6
Nonmanufactured articles.....	27.716	197.3	204.1	-9.0	-2.8	-3.6	2.8	3.4
Manufactured articles.....	71.249	137.5	138.5	-3.5	0.1	-1.3	-1.3	0.7
<b>European Union<sup>4</sup></b> .....	100.000	134.7	134.2	-1.7	-0.2	-0.7	-0.2	-0.4
Nonmanufactured articles.....	2.118	339.3	348.3	-5.3	-5.5	-10.7	-0.4	2.7
Manufactured articles.....	97.675	131.3	130.7	-1.7	-0.2	-0.4	-0.3	-0.5
<b>France (Dec. 2003=100)</b> .....	100.000	120.6	120.2	-0.1	-0.1	-0.4	-0.2	-0.3
<b>Germany (Dec. 2003=100)</b> .....	100.000	114.5	114.0	-1.7	-0.2	-0.3	0.0	-0.4
<b>United Kingdom (Dec. 2003=100)</b> .....	100.000	131.6	131.9	-1.6	-1.2	-2.1	-0.5	0.2
<b>Latin America<sup>5</sup></b> .....	100.000	172.1	173.5	-3.3	-1.8	-4.2	-0.7	0.8
Nonmanufactured articles.....	33.434	348.4	355.9	-4.9	-4.9	-9.8	-1.6	2.2
Manufactured articles.....	66.126	133.2	133.4	-3.0	-0.1	-1.0	-0.3	0.2
<b>Mexico (Dec. 2003=100)</b> .....	100.000	142.6	142.8	-2.9	-1.3	-2.6	-0.5	0.1
Nonmanufactured articles (Dec. 2008=100).....	19.730	183.9	187.7	-6.8	-5.4	-10.5	-2.5	2.1
Manufactured articles (Dec. 2008=100)....	80.270	95.0	94.7	-2.1	0.0	-0.4	0.1	-0.3
<b>Pacific Rim (Dec. 2003=100)<sup>6</sup></b> .....	100.000	104.5	104.4	-0.2	-0.1	-0.2	0.0	-0.1
<b>China (Dec. 2003=100)</b> .....	100.000	104.9	104.9	0.8	-0.1	0.0	0.0	0.0
<b>Japan</b> .....	100.000	102.7	102.7	1.0	0.1	0.1	0.1	0.0
<b>Asian NICs<sup>7</sup></b> .....	100.000	90.9	90.8	-1.2	-0.2	0.2	0.1	-0.1
<b>ASEAN (Dec. 2003=100)<sup>8</sup></b> .....	100.000	104.9	104.4	-1.1	-0.4	-0.8	-0.1	-0.5
<b>Asia Near East (Dec. 2003=100)<sup>9</sup></b> .....	100.000	256.7	262.0	-3.8	-1.4	-7.9	-5.0	2.1

1 Relative figures are based on 2010 trade values.

2 Includes Western Europe, Canada, Japan, Australia, New Zealand and South Africa.

3 Includes Eastern Europe, Latin America, OPEC countries, and other countries in Asia, Africa and the Western Hemisphere.

4 Includes European Union countries.

5 Includes Mexico, Central America, South America and the Caribbean.

6 Includes China, Japan, Australia, Brunei, Indonesia, Macao, Malaysia, New Zealand, Papua New Guinea, Philippines and Asian Newly Industrialized Countries.

7 Asian Newly Industrialized Countries. Includes Hong Kong, Singapore, South Korea and Taiwan.

8 Association of Southeast Asian Nations. Includes Brunei, Cambodia, Indonesia, Laos, Malaysia, Myanmar, Philippines, Singapore, Thailand and Vietnam.

9 Includes Bahrain, Iran, Iraq, Israel, Jordan, Kuwait, Lebanon, Oman, Qatar, Saudi Arabia, Syria, United Arab Emirates and Yemen.

NOTES: Data may be revised in each of the three months after original publication.

Regions are not mutually exclusive.

Dash = Not available

**Table 8. U.S. international price indexes and percent changes for selected transportation services: August 2011 to August 2012**

[2000=100, unless otherwise noted]

Description	Relative importance July 2012 <sup>1</sup>	Index		Percent change				
		July 2012	Aug. 2012	Annual	Monthly			
				Aug. 2011 to Aug. 2012	Apr. 2012 to May 2012	May 2012 to June 2012	June 2012 to July 2012	July 2012 to Aug. 2012
<b>Air Freight</b>								
<b>Import Air Freight</b> .....	100.000	176.1	173.3	-6.8	0.3	0.6	-1.4	-1.6
Europe (Dec. 2003=100).....	23.232	157.6	156.2	-13.5	1.3	-2.1	-2.7	-0.9
Asia.....	72.310	158.6	155.5	-4.8	0.1	1.6	-1.1	-2.0
<b>Export Air Freight</b> .....	100.000	145.0	143.3	-1.8	0.3	-1.7	-2.1	-1.2
Europe (Dec. 2006=100).....	36.284	131.3	130.0	-1.4	0.2	-1.8	-1.6	-1.0
<b>Inbound Air Freight</b> .....	100.000	158.8	156.6	-4.6	0.2	0.0	-1.7	-1.4
Europe (Dec. 2003=100).....	23.881	140.9	139.3	-11.4	0.7	-3.1	-3.3	-1.1
Asia.....	64.757	145.4	142.9	-2.5	0.1	1.4	-1.3	-1.7
<b>Outbound Air Freight</b> .....	100.000	145.0	144.9	0.9	0.2	-0.9	-2.7	-0.1
Europe (Dec. 2003=100).....	30.907	163.0	163.2	1.2	0.7	-1.1	-1.2	0.1
Asia.....	49.201	136.5	136.3	0.2	0.0	-0.7	-4.2	-0.1
<b>Air Passenger Fares</b>								
<b>Import Air Passenger Fares</b> .....	100.000	193.4	182.7	2.5	0.6	10.3	-3.2	-5.5
Europe.....	40.191	206.6	190.1	3.9	-1.2	20.0	-7.1	-8.0
Asia.....	27.149	167.2	161.3	2.5	6.1	7.3	-1.2	-3.5
Latin America/Caribbean.....	11.370	176.1	172.5	-5.2	-6.0	1.7	1.3	-2.0
<b>Export Air Passenger Fares</b> .....	100.000	212.6	217.5	-2.2	6.6	2.1	4.8	2.3
Europe.....	28.222	256.8	243.5	-7.3	-0.7	13.7	1.1	-5.2
Asia.....	27.112	184.6	233.3	6.9	6.7	-0.2	3.2	26.4
Latin America/Caribbean.....	23.056	237.5	227.8	15.3	5.3	-2.5	6.0	-4.1

<sup>1</sup> Relative importance figures are based on 2010 trade values.

NOTES: Data may be revised in each of the three months after original publication.

Dash = Not available

## TECHNICAL NOTE

**Import and Export Merchandise and Services Price Indexes** -- All indexes use a modified Laspeyres formula and are not seasonally adjusted. Price indexes are reweighted annually, with a two-year lag in the weights. Published series use a base year of 2000=100 where possible. More detailed index series and additional information may be obtained at <http://www.bls.gov/mxp>, or by calling (202) 691-7101.

**Merchandise Goods Classification Systems** -- The merchandise price indexes are published using three classification systems. Items are classified by end use according to the Bureau of Economic Analysis Classification System, by industry according to the North American Industry Classification System (NAICS), and by product category according to the Harmonized System (HS). While classification by end use and product category are self-explanatory, some notes are in order for classifying items by industry. In the NAICS imports and exports tables, items are classified by output industry, not input industry. As an example, NAICS import index 326 (plastics and rubber products manufacturing) include outputs such as manufactured plastic rather than inputs such as petroleum. The NAICS classification structure also matches the classification system used by the PPI (Producer Price Index) to produce the NAICS primary products indexes.

**Import Price Indexes** -- Products have been classified by the Harmonized Tariff Schedule of the United States Annotated (TSUSA). Import prices are based on U.S. dollar prices paid by the U.S. importer. The prices are generally either "free on board" (f.o.b.) foreign port or "cost, insurance, and freight" (c.i.f.) U.S. port transaction prices, depending on the practices of the individual industry. The index for crude petroleum is calculated from data collected by the U.S. Department of Energy.

**Export Price Indexes** -- Products have been classified by the Harmonized Schedule B classification system of the U.S. Bureau of the Census. The prices used are generally either "free alongside ship" (f.a.s.) factory or "free on board" (f.o.b.) transaction prices, depending on the practices of the individual industry. Prices used in the grain index, excluding rice, are obtained from the U.S. Department of Agriculture.

**Services Price Indexes** -- Starting in September 2008 the Import Air Passenger Fares Indexes represent changes in the average revenue per passenger received by foreign carriers from U.S. residents and are calculated from data obtained from an airline consulting service. These data include tickets sold by travel agencies and travel websites. Tickets sold directly by the airlines are excluded, as are frequent flyer tickets generally. Starting in January 2008 the Export Air Passenger Fares Indexes represent changes in the average revenue per passenger received by U.S. carriers from foreign residents and are calculated from data collected directly from airlines. These data include frequent flyer tickets and those sold by consolidators. Taxes and fees are included in the Import Air Passenger Fares Index and excluded from the Export Air Passenger Fares Index. The Air Freight Indexes are calculated from data collected directly from airlines. These data exclude mail and passenger baggage. The scope of the service being priced is the movement of freight from airport to airport only, and does not include any ground transportation or port service. The Air Freight Indexes are presented using two definitions: Balance of Payments (which represent transactions between U.S. and foreign residents) and International (which represent transactions inbound to and outbound from the U.S.). Fact sheets specifying detailed information for each services industry are available at <http://www.bls.gov/mxp> under "MXP Publications."

**Import Indexes by Locality of Origin** -- Prices used in these indexes are a subset of the data collected for the Import Price Indexes. Beginning with January 2002, the indexes are defined by locality of origin using a nomenclature based upon the North American Industry Classification System (NAICS). Nonmanufactured goods are defined as NAICS 11 and 21 and manufactured goods are defined as NAICS 31-33.

**Revision Policy** -- To reflect the availability of late reports and corrections by respondents, monthly data may be revised in each of the three months after original publication. After three months, no further data revisions take place. So, for example, data released in the January release will be subject to revision in the releases for February, March, and April.

**Uses of the Data** -- The primary use of the indexes is to deflate trade statistics, notably the foreign trade sector of the National Income and Product Accounts constructed by the Department of Commerce. Other published indexes are useful for general market analysis. For trade in international services, Balance of Payments indexes are used for deflating National Income and Product Accounts, while International indexes are more appropriate for market analysis. Merchandise and services indexes also can be used to study U.S. competitiveness and to compute price elasticities, and the merchandise import indexes by country or region of origin are useful in terms of trade analysis.

**E-Mail Subscription** -- The U.S. Import and Export Price Indexes news release is available through an e-mail subscription service at (<http://www.bls.gov/bls/list.htm>).

**Additional Information** -- More detailed data are available on the Import/Export Price Indexes home page at (<http://www.bls.gov/mxp>). Flat Files and the FTP server are available for users requiring access to either a large volume of time series data or other related documentation. The FTP site can be accessed at <ftp://ftp.bls.gov>. For technical assistance in using the BLS Internet site, send e-mail to ([labstat.helpdesk@bls.gov](mailto:labstat.helpdesk@bls.gov)). For Import/Export Price Index data requests, send e-mail to ([mxpinfo@bls.gov](mailto:mxpinfo@bls.gov)).

Information from this release will be made available to sensory impaired individuals upon request. Voice phone: 202-691-5200; Federal Relay Service: 1-800-877-8339.