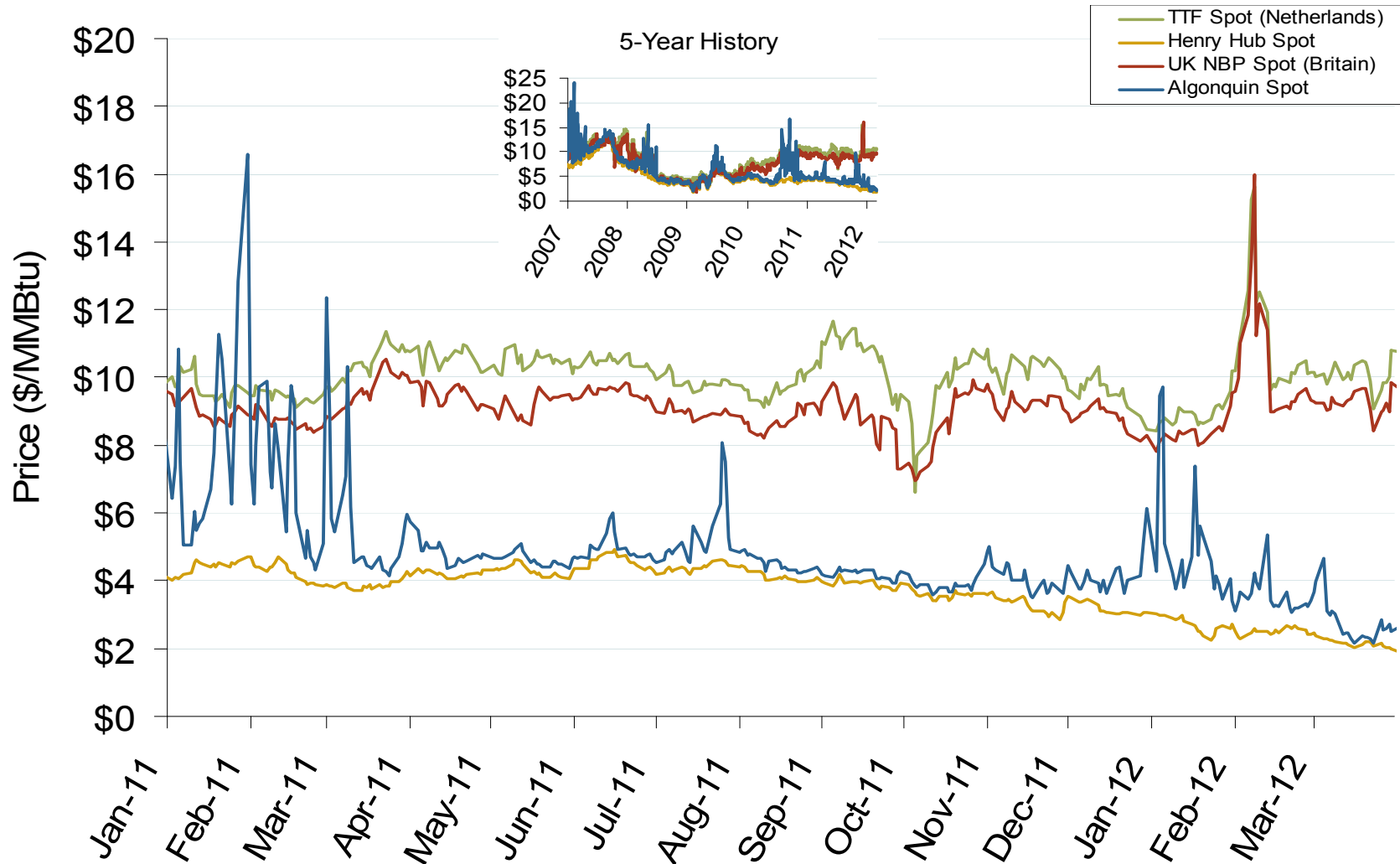


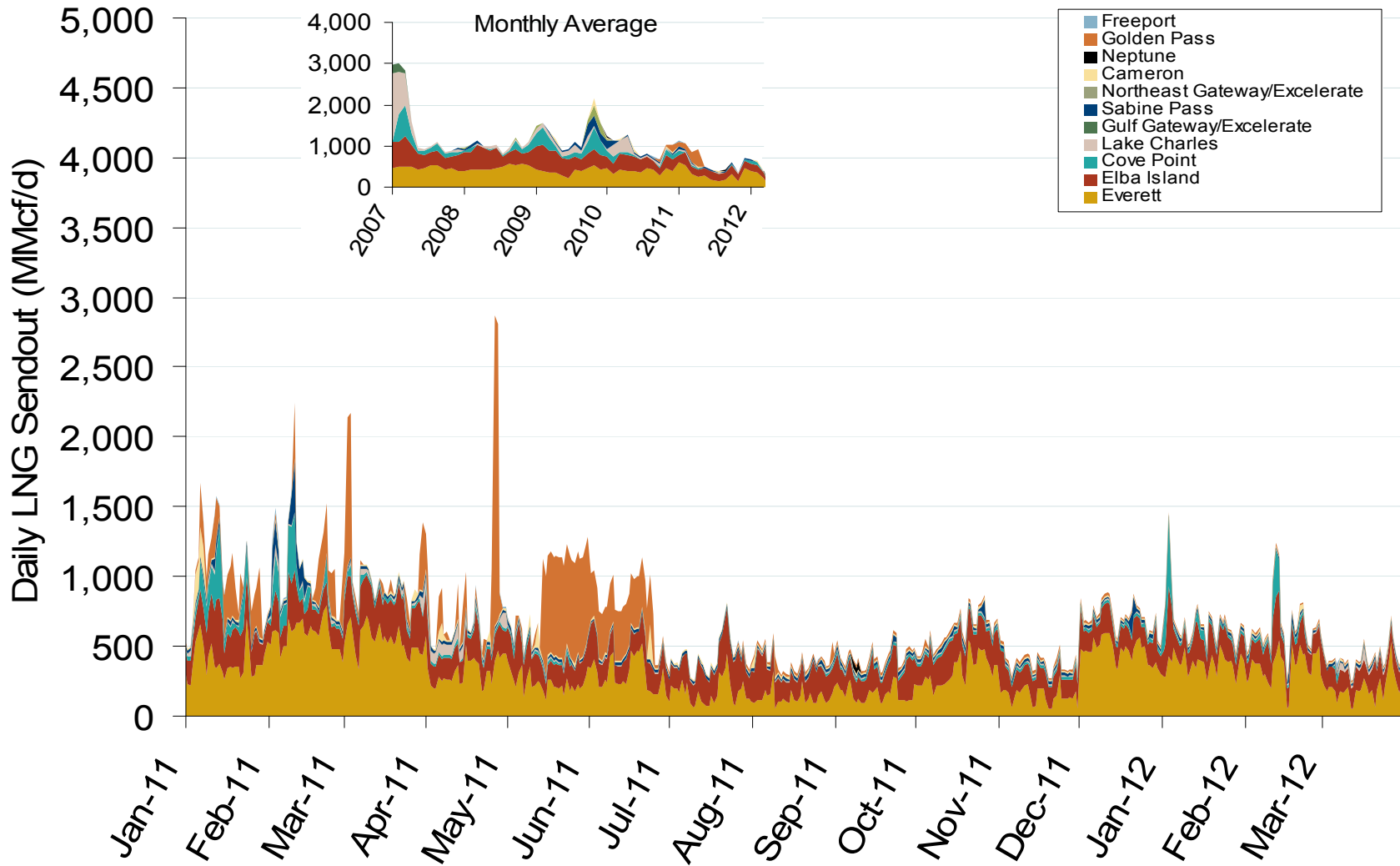
## World LNG Estimated May 2012 Landed Prices



## Atlantic Basin European and US Spot Natural Gas Prices



## Daily Gas Sendout from Existing U.S. LNG Facilities



Notes: Everett data includes flows onto the AGT and TGP interstate lines, plus estimates of flows to the Mystic 7 power plant, Keyspan Boston Gas, and LNG trucked out of the terminal. Excludes Freeport LNG which flows via intrastate pipelines

Source: Derived from *Bentek Energy* data

Updated: April 17, 2012

## Monthly Gas Imports at Existing U.S. LNG Facilities

