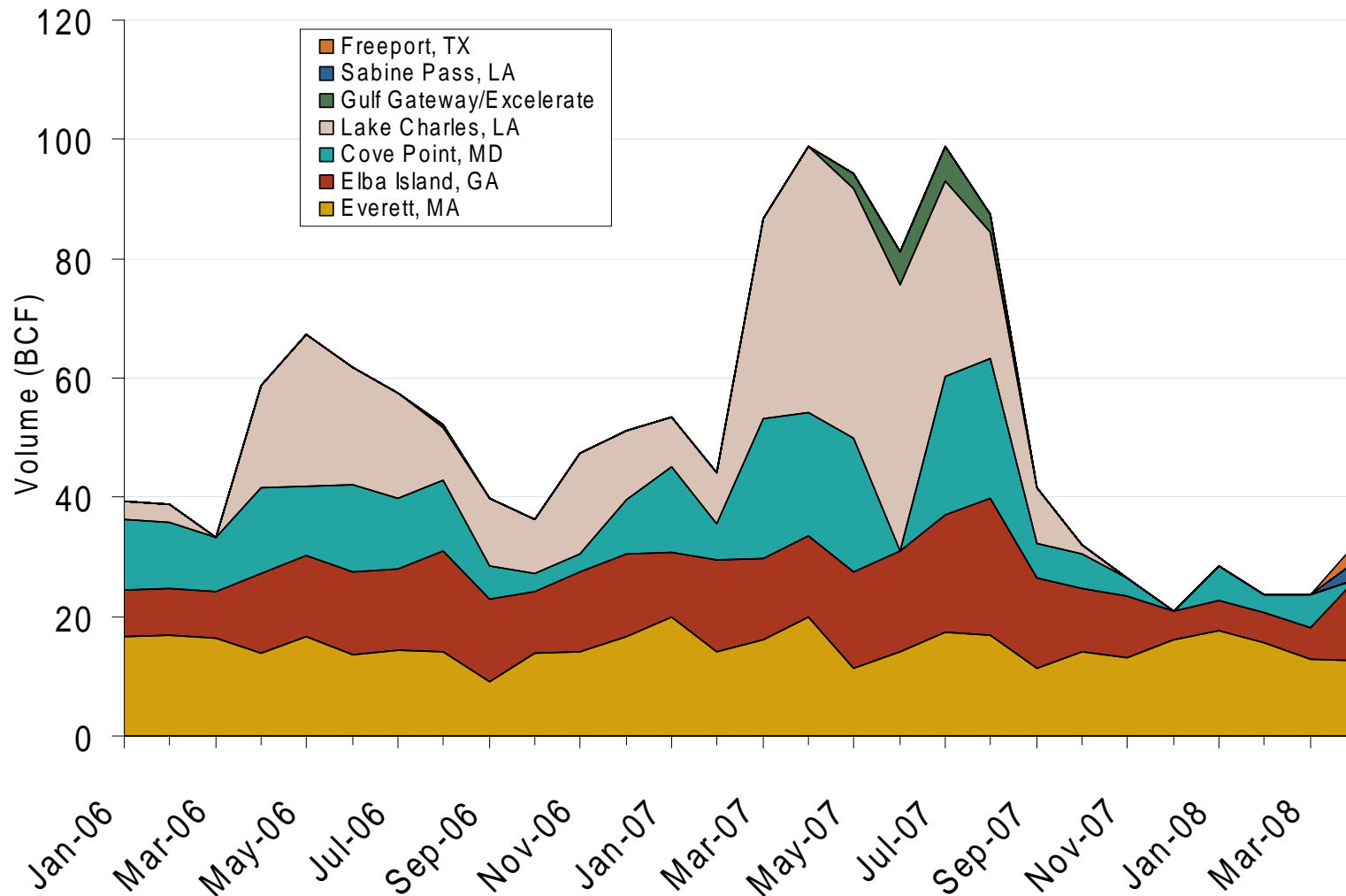


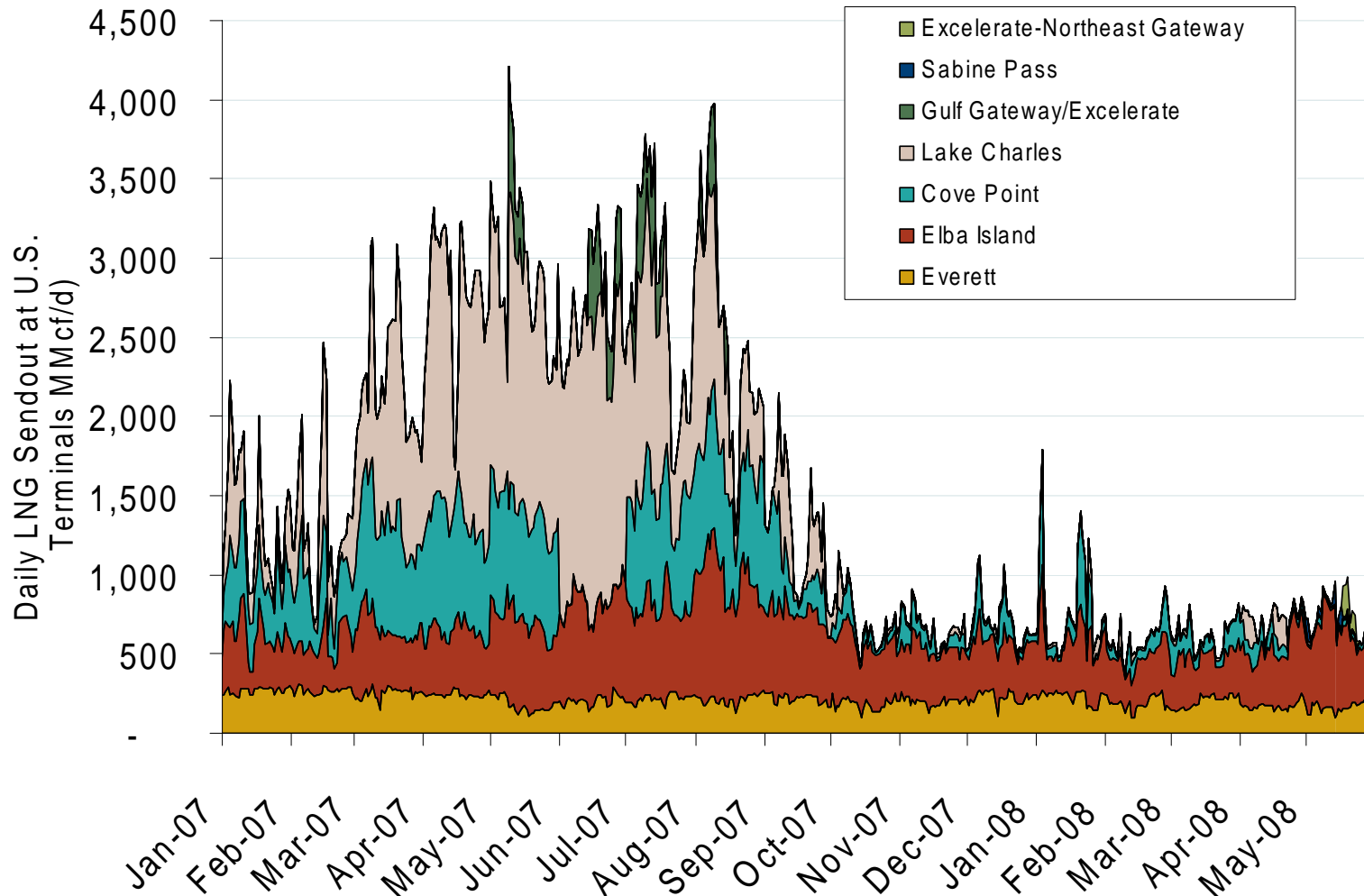
Monthly Gas Imports at Existing U.S. LNG Facilities



Source: Derived from EIA data.

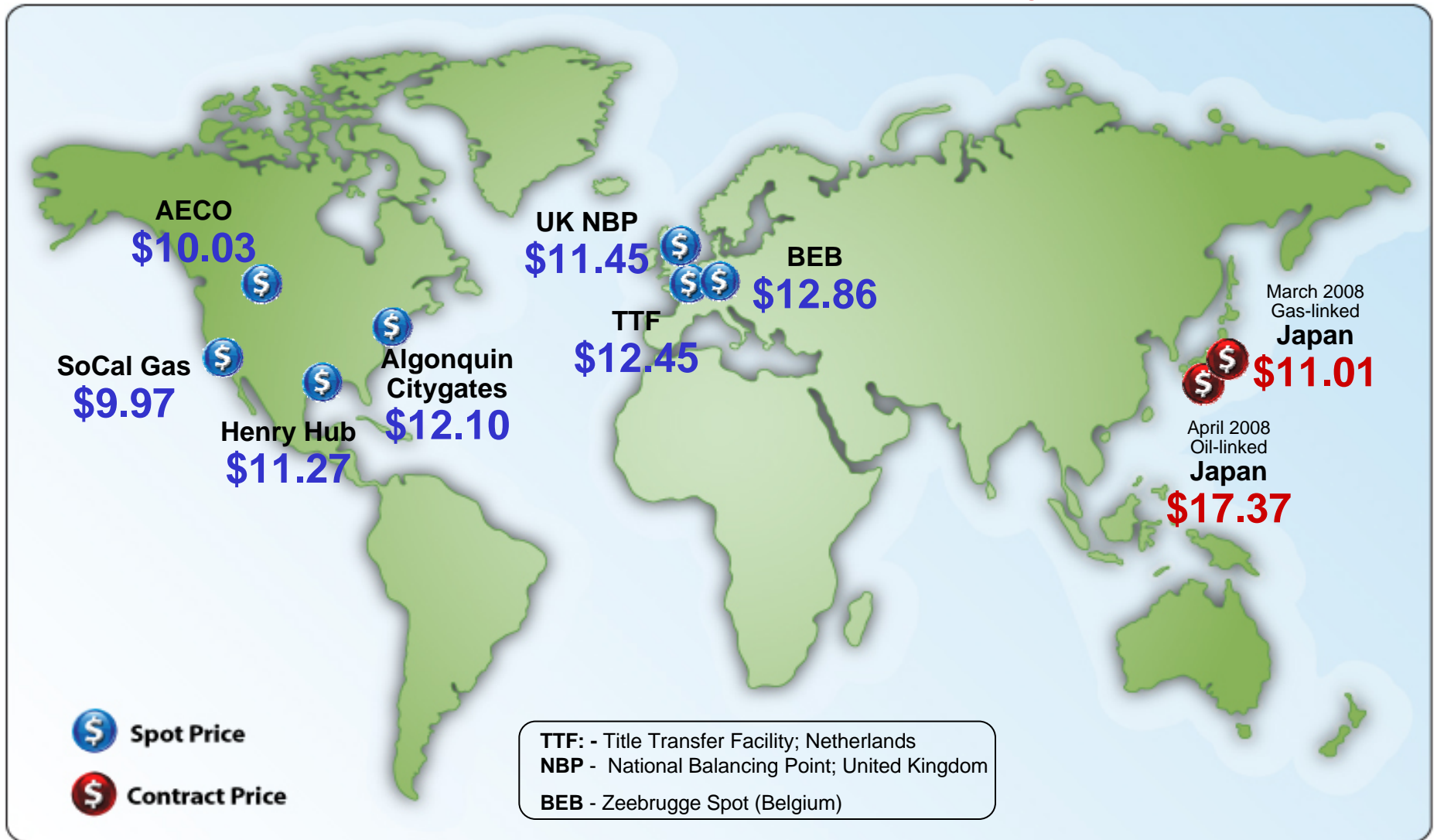
Updated June 6, 2008

Daily Gas Sendout from Existing U.S. LNG Facilities



Source: Derived from *Bentek* data. Excludes Everett LNG delivered via truck and consumed by the Mystic plant.

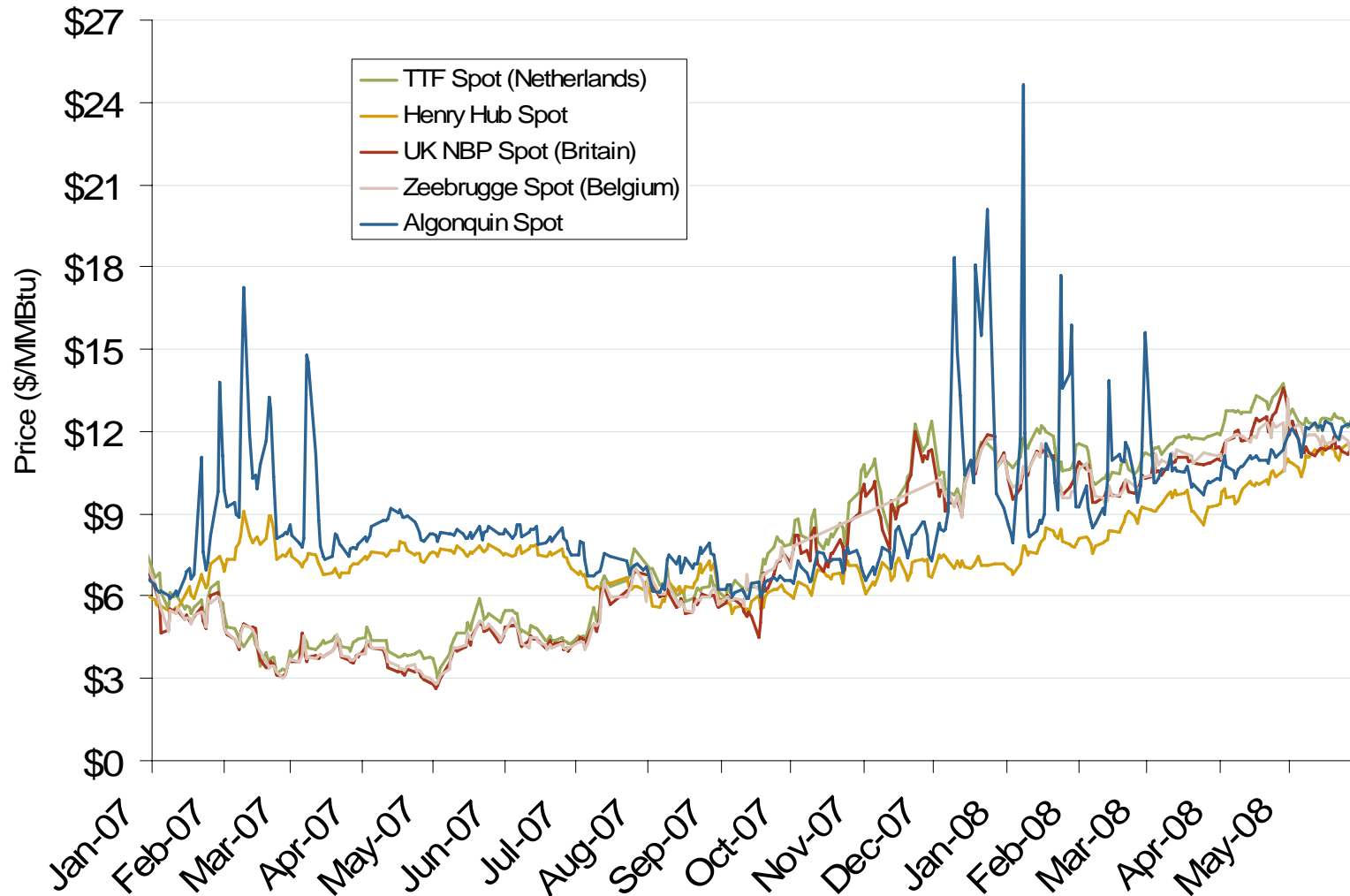
World Natural Gas Prices for May 2008



Source: Derived from *Bloomberg, ICE, ICAP and LNG Japan Corp.* data. Spot Price is a monthly average of daily prices. Contract Price is a monthly price. All prices in \$US/MMBtu.

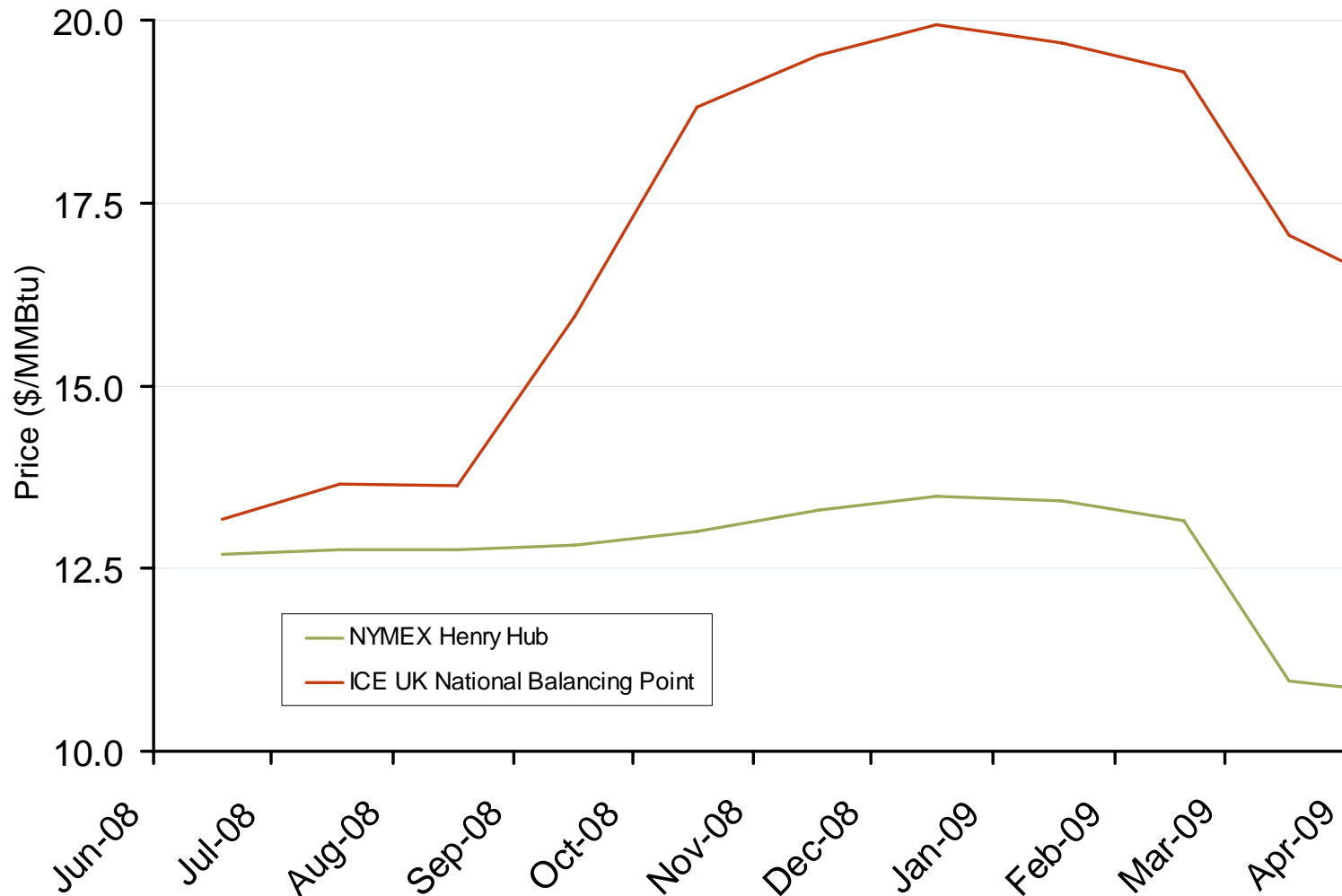
Updated June 6, 2008 3017

Atlantic Basin European and US Spot Natural Gas Prices



Source: Derived from Bloomberg and ICE data.

NYMEX Henry Hub and ICE UK National Balancing Point Natural Gas Forward Price Curves



Source: Derived from NYMEX and ICE data.

Updated June 6, 2008

3016