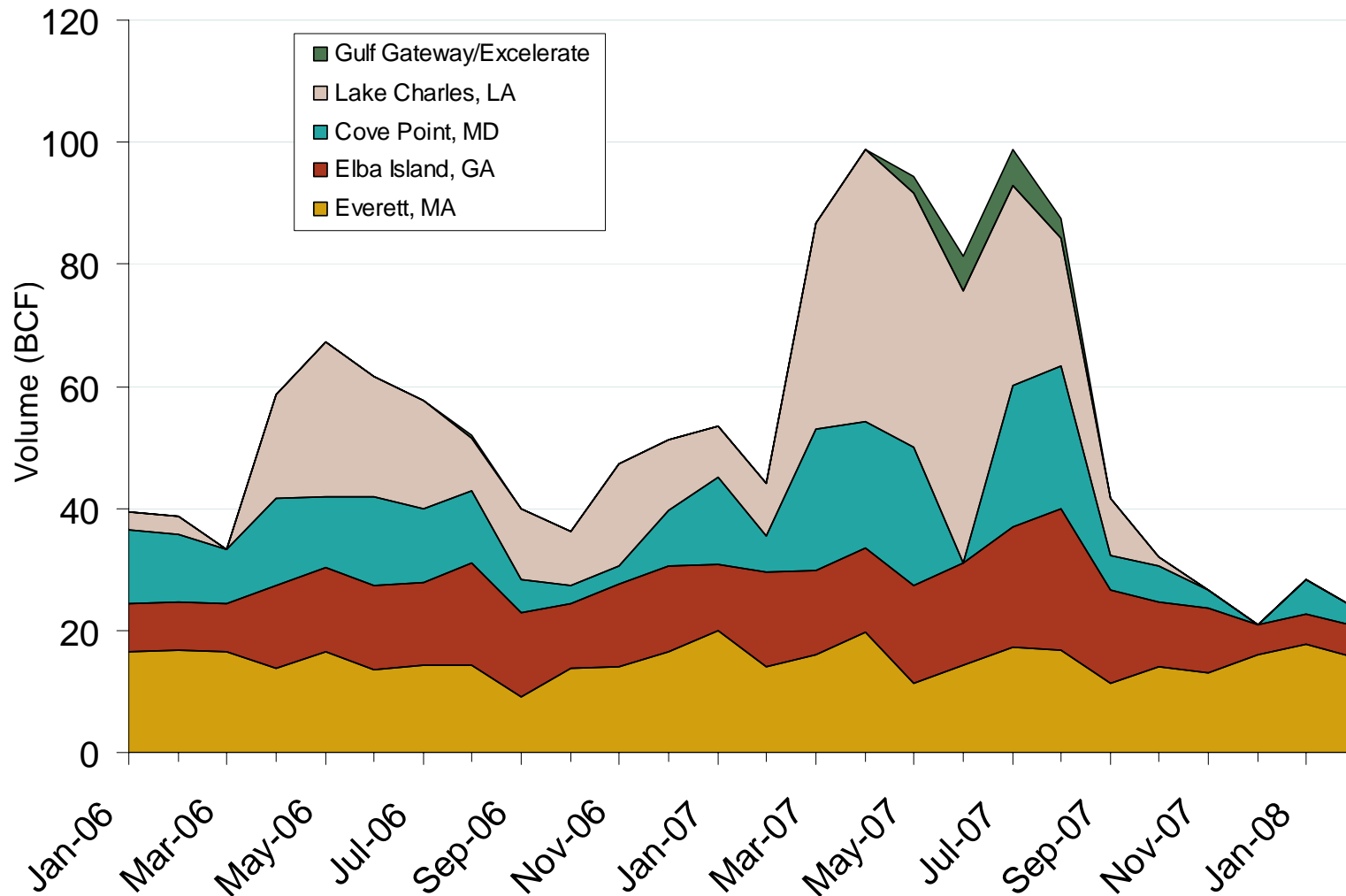
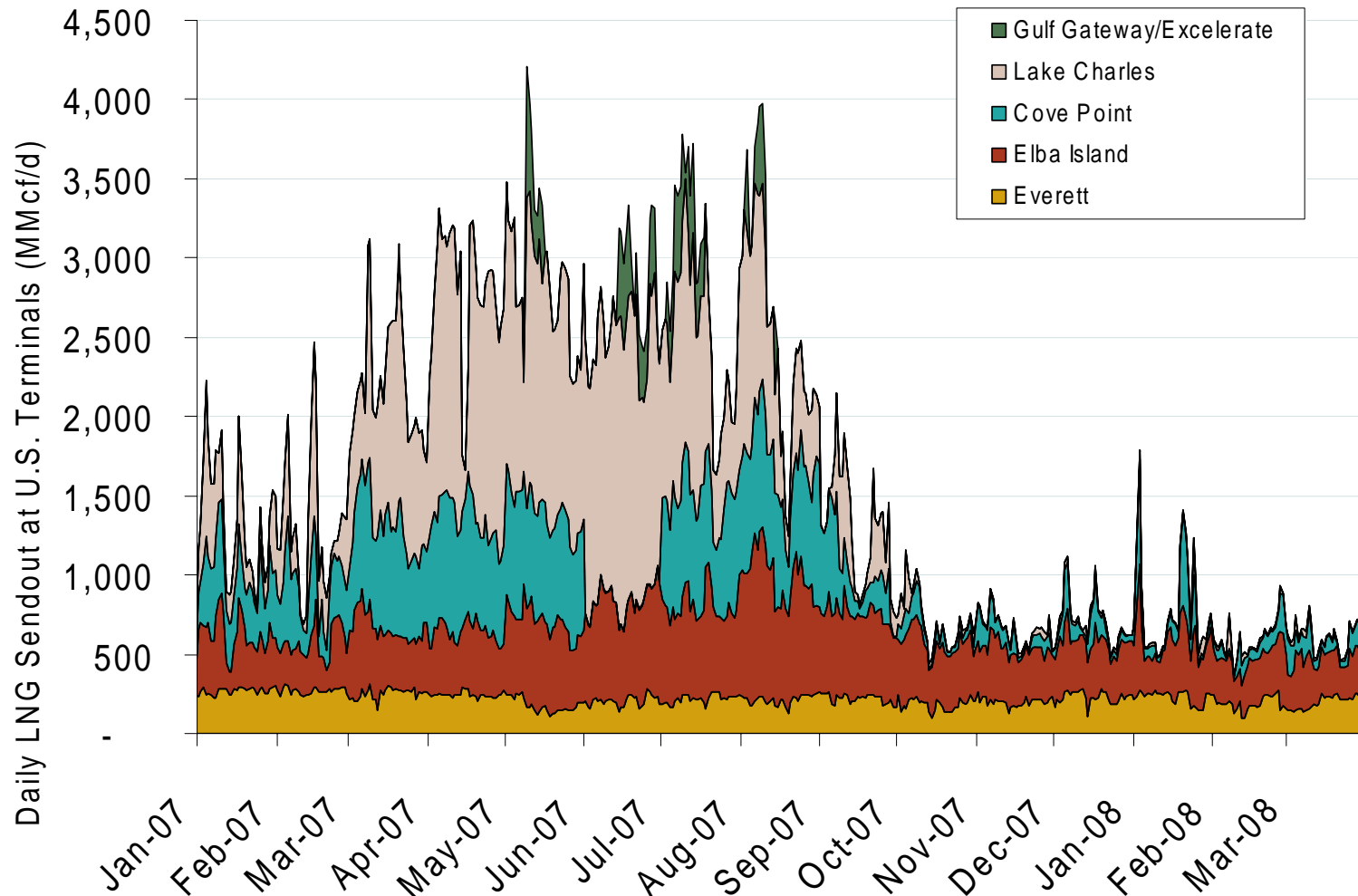


# Monthly Gas Imports at Existing U.S. LNG Facilities



Source: Derived from EIA data.

# Daily Gas Sendout from Existing U.S. LNG Facilities

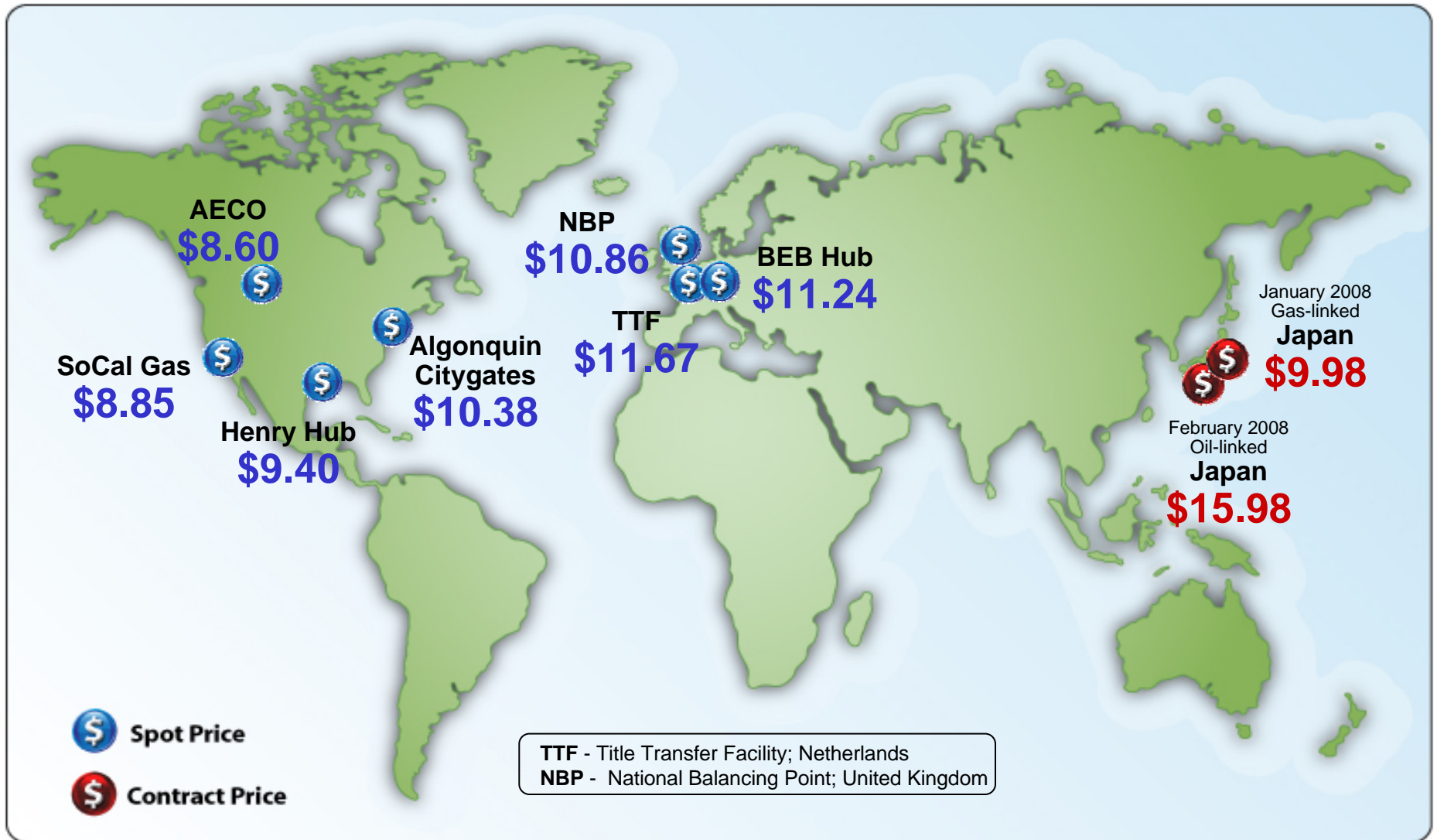


Source: Derived from *Bentek* data. Excludes Everett LNG delivered via truck and consumed by the Mystic plant.

Updated April 4, 2008

3007

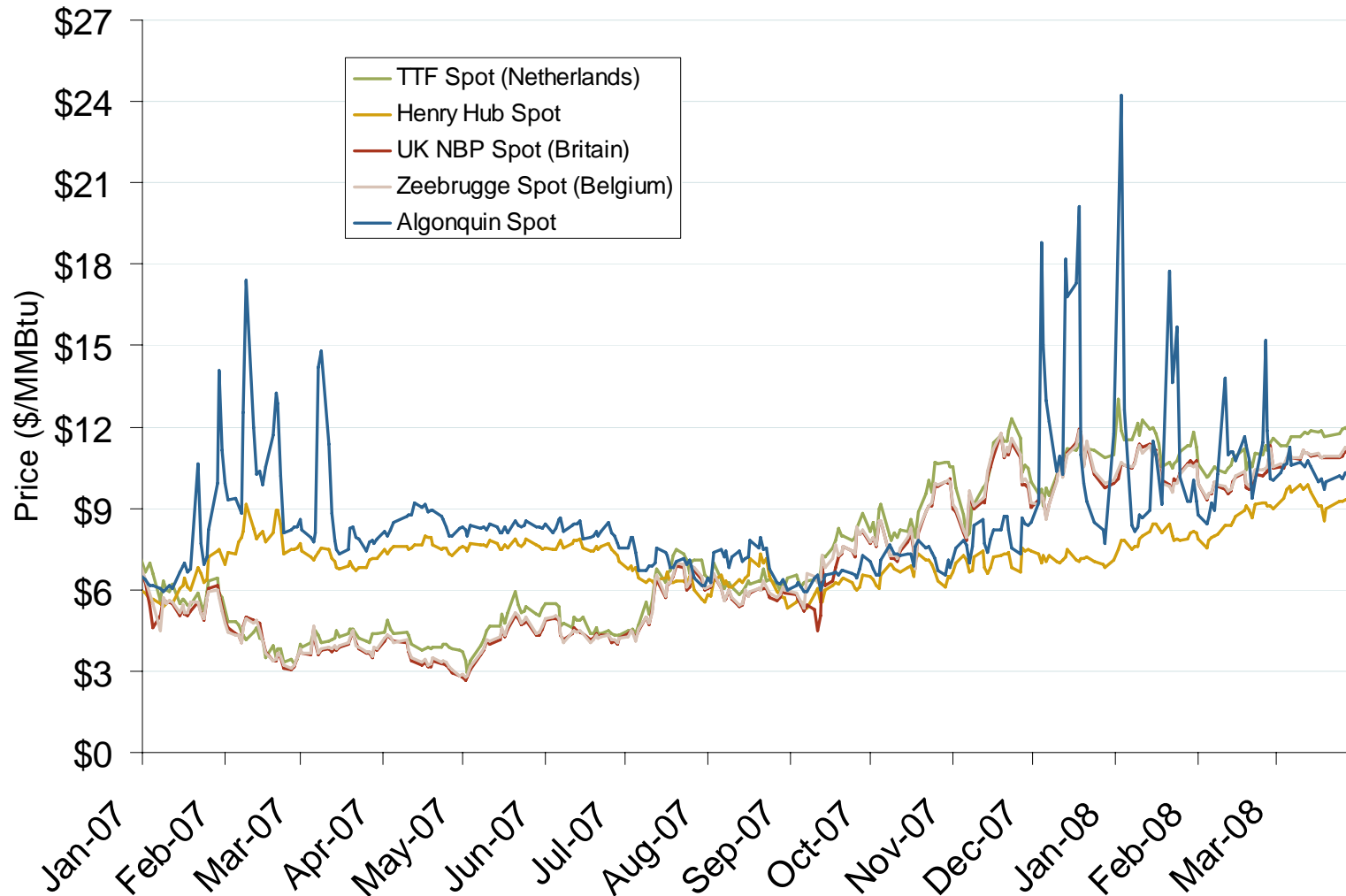
## World Natural Gas Prices for March 2008



Source: Derived from *Bloomberg, ICE, ICAP and LNG Japan Corp.* data. Spot Price is a monthly average of daily prices. Contract Price is a monthly price. All prices in \$US/MMBtu.

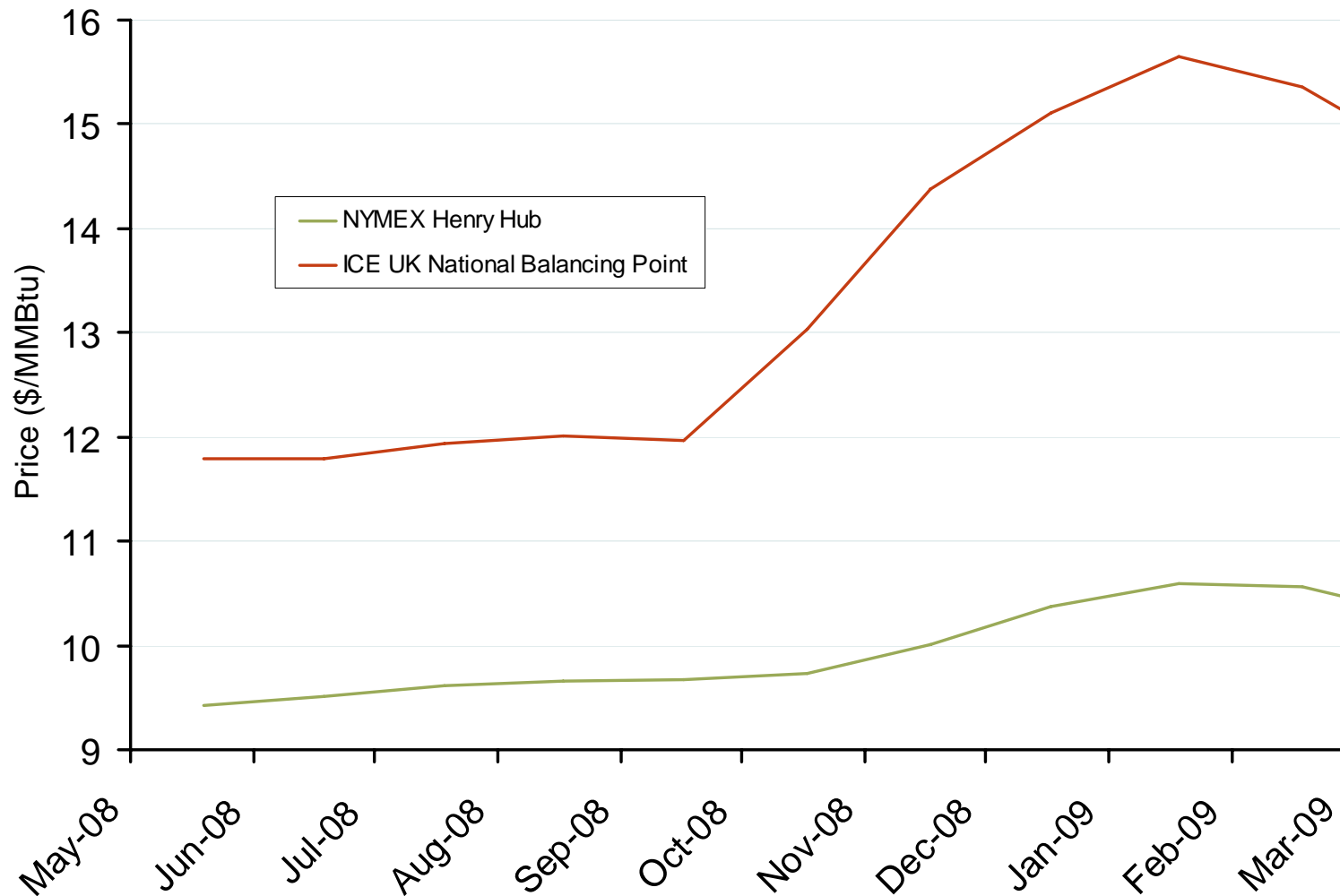
Updated April 4, 2008

# Atlantic Basin European and US Spot Natural Gas Prices



Source: Derived from Bloomberg and ICE data.

## NYMEX Henry Hub and ICE UK National Balancing Point Natural Gas Forward Price Curves



Source: Derived from NYMEX and ICE data.

Updated April 4, 2008

3016