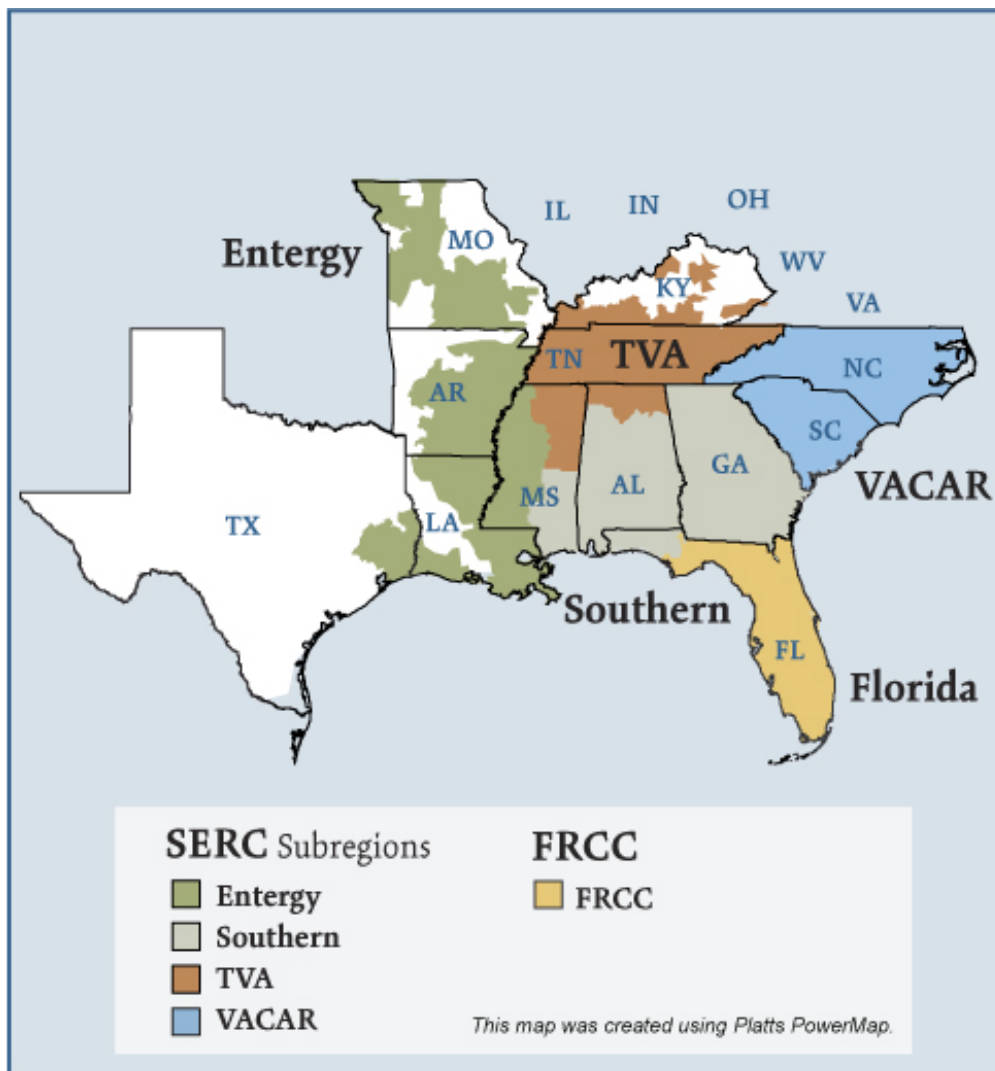


## Southeast Electric Regions



## Southeast Electric Market: Overview and Focal Points

Federal Energy Regulatory Commission • Market Oversight @ FERC.gov

### Overview

#### Market Description

Florida Reliability Coordinating Council (FRCC) and SERC Reliability Corporation (SERC) reliability regions minus the portions of SERC in the Midwest ISO (MISO) and in PJM.

#### Geography

States covered: All or most of Florida, Arkansas, Louisiana, Mississippi, Alabama, Georgia, Tennessee, North Carolina, South Carolina and parts of Missouri, Kentucky and Texas.

Reliability region: Southeastern Electric Reliability Council (SERC) and Florida Reliability Coordinating Council (FRCC)

Balancing authorities: See list on page 5 and 6.

Hubs: Entergy, Southern, TVA

#### RTO/ISO

None

#### Generation/Supply

Marginal fuel type: Coal and natural gas

Generating capacity (summer 2006): 299,712 MW

Capacity reserve (summer 2006): 64,188 MW

Reserve margin (summer 2006): 27%

*Updated May 3, 2007*

1056

## Southeast Electric Market: Overview and Focal Points

### Federal Energy Regulatory Commission • Market Oversight @ FERC.gov

#### Demand

All time peak demand: 237,100 MW (2005)

In summer of 2006, demand in parts of the region, such as the Southern Company service area, reached record levels on several occasions due to extremely hot weather.

Peak demand growth: -0.6% (2005–2006)

Summer Peak Demand (MW): 237,100 (2005) 235,524 (2006)

*Source:* Derived from *SERC* and *FRCC* data and discussions.

#### Prices

Annual Average of Daily Bilateral Day Ahead On-Peak Prices

Platts “Into Southern” Index

2004: \$48.64/MWh

2005: \$70.84/MWh

2006: \$55.50/MWh

2007: \$59.10/MWh

## Supply and Demand Statistics for the Southeast

| <b>Supply Demand Statistics</b> |           |           |           |
|---------------------------------|-----------|-----------|-----------|
|                                 | 2004      | 2005      | 2006      |
| Summer Generating Capacity MW   | 272,604   | 297,221   | 299,712   |
| Summer Peak Demand MW           | 220,299   | 237,100   | 235,524   |
| Summer Reserves MW              | 52,305    | 60,121    | 64,188    |
| Summer Reserve Margin:          | 24%       | 25%       | 27%       |
| Annual Load (GWh):              | 1,077,069 | 1,188,598 | 1,205,776 |

Source: Derived from SERC "Reliability Corporation Information Summary," July 2006; "Reliability Review Subcommittee's 2006 Report to the SERC Engineering Committee", "Reliability Review Subcommittee's 2005 Report to the SERC Engineering Committee", and FERC staff discussions with SERC and FRCC

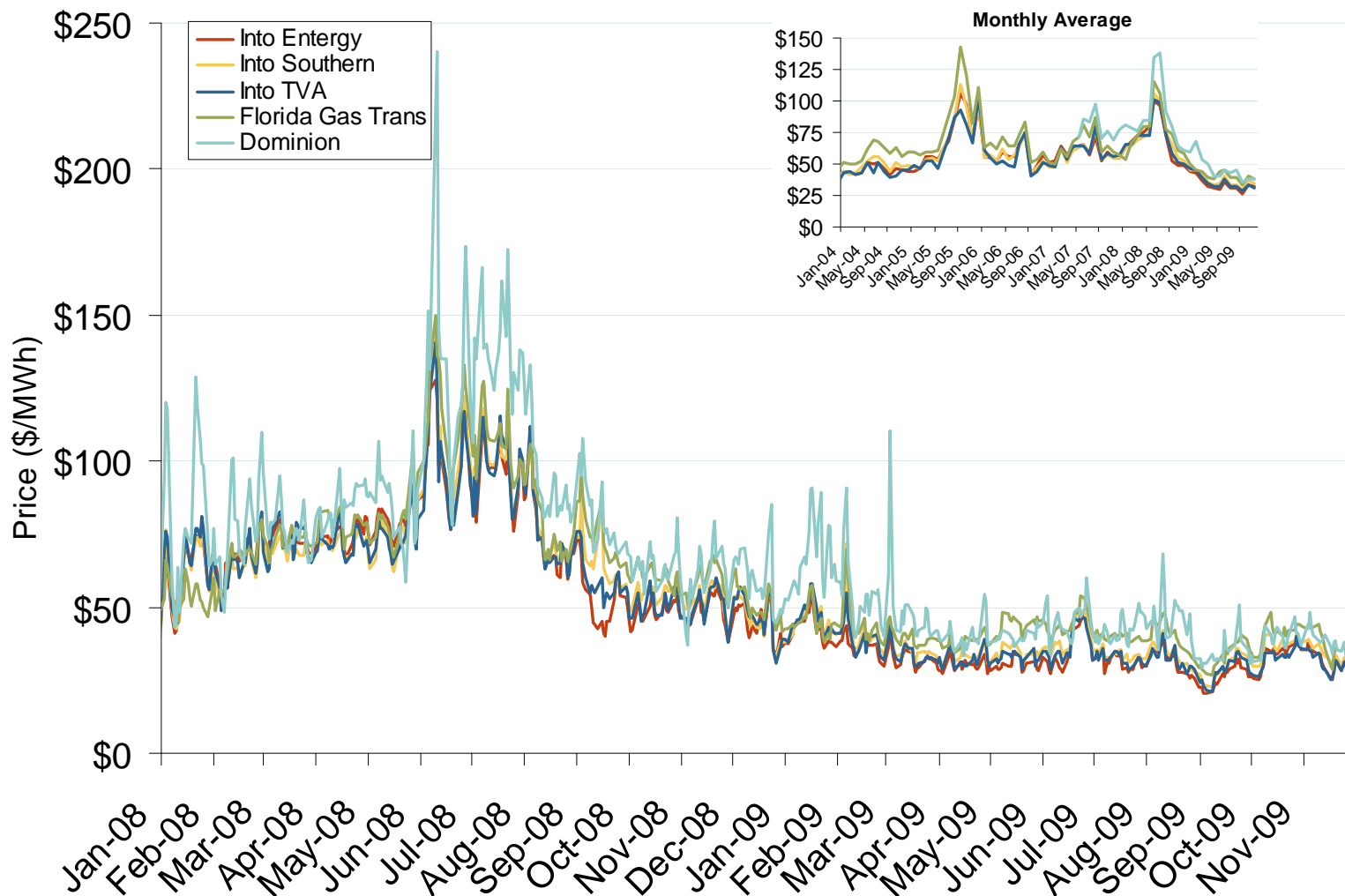
*Corrected March 31, 2007*

1057

## Annual Average Bilateral Prices

| Annual Average Day Ahead On Peak Prices (\$/MWh) |         |         |         |         |         |            |
|--|---------|---------|---------|---------|---------|------------|
|  | 2004    | 2005    | 2006    | 2007    | 2008    | 5-Year Avg |
| VACAR  | \$48.27 | \$71.88 | \$56.34 | \$60.52 | \$70.86 | \$61.57    |
| Southern   | \$48.67 | \$70.84 | \$55.50 | \$59.10 | \$70.13 | \$60.84    |
| TVA  | \$44.23 | \$67.39 | \$53.48 | \$60.28 | \$69.01 | \$58.87    |
| Florida  | \$58.35 | \$85.03 | \$64.02 | \$65.59 | \$74.66 | \$69.52    |
| Entergy  | \$45.76 | \$69.96 | \$56.28 | \$59.74 | \$68.49 | \$60.04    |

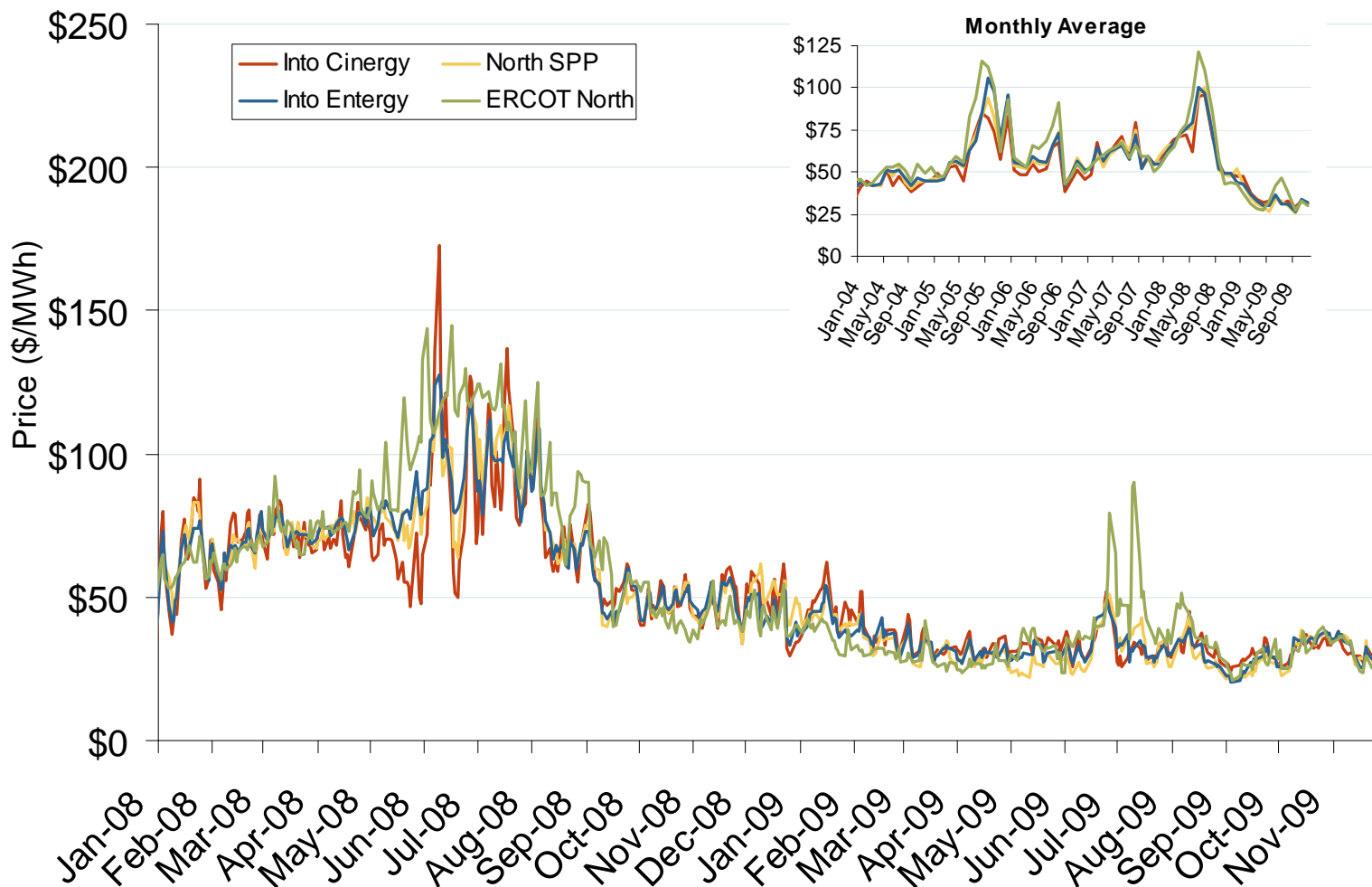
# Southeastern Daily Bilateral Day-Ahead On-Peak Prices



Source: Derived from *Platts* data.

Updated December 8, 2009 1059

# Midwestern Daily Bilateral Day-Ahead On-Peak Prices



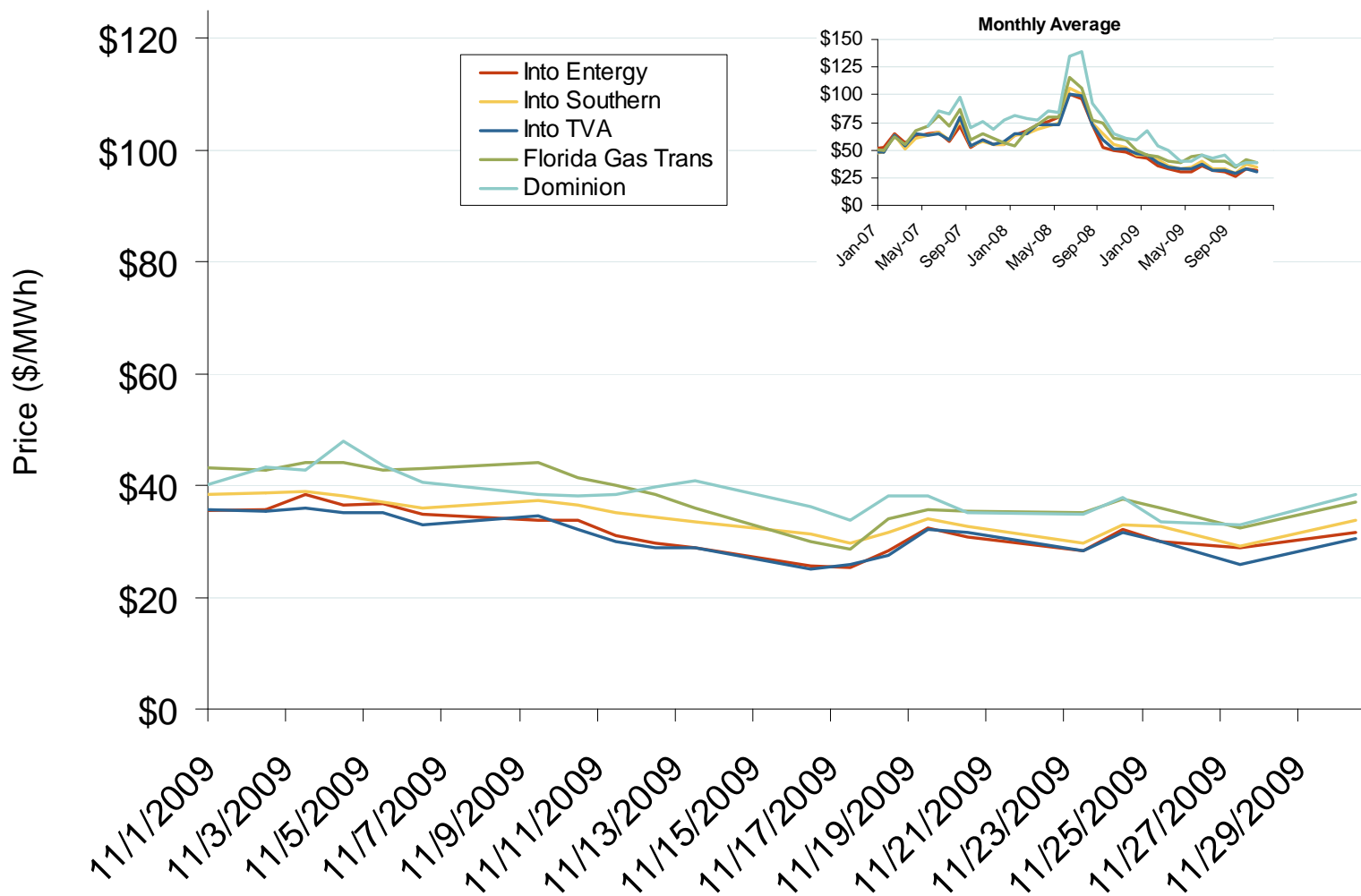
Source: Derived from *Platts* data.

Updated December 8, 2009 1060

Southeast Electric Market: Last Month's Southeastern Bilateral Prices

Federal Energy Regulatory Commission • Market Oversight @ FERC.gov

# Southeastern Daily Bilateral Day-Ahead On-Peak Prices



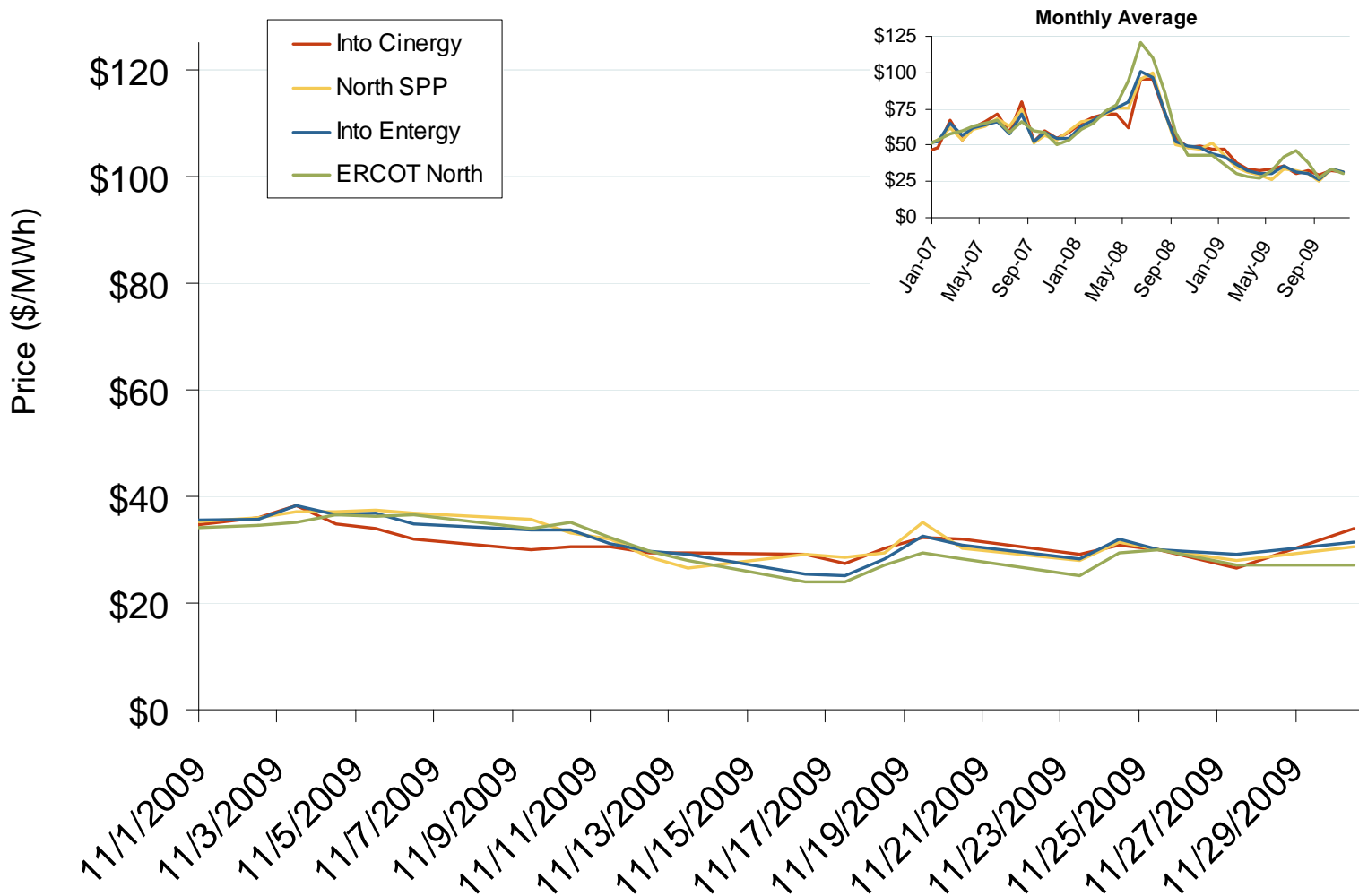
Source: Derived from Platts data.

Updated December 8, 2009

14020



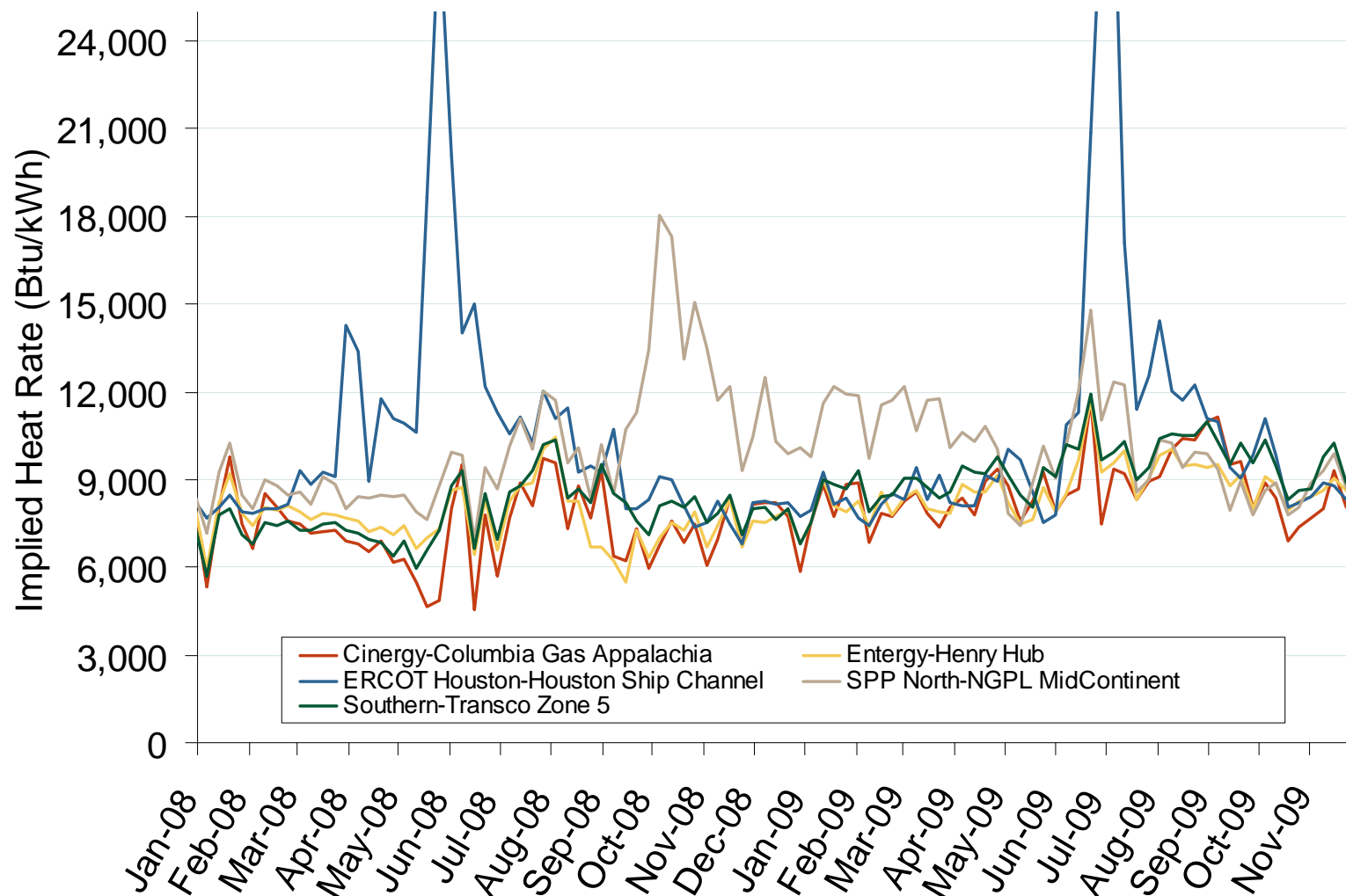
# Midwestern Daily Bilateral Day-Ahead On-Peak Prices



Source: Derived from *Platts* data.

Updated December 8, 2009

## Implied Heat Rates at South Central Trading Points Weekly Averages



Source: Derived from *Platts* on-peak electric and natural gas price data.

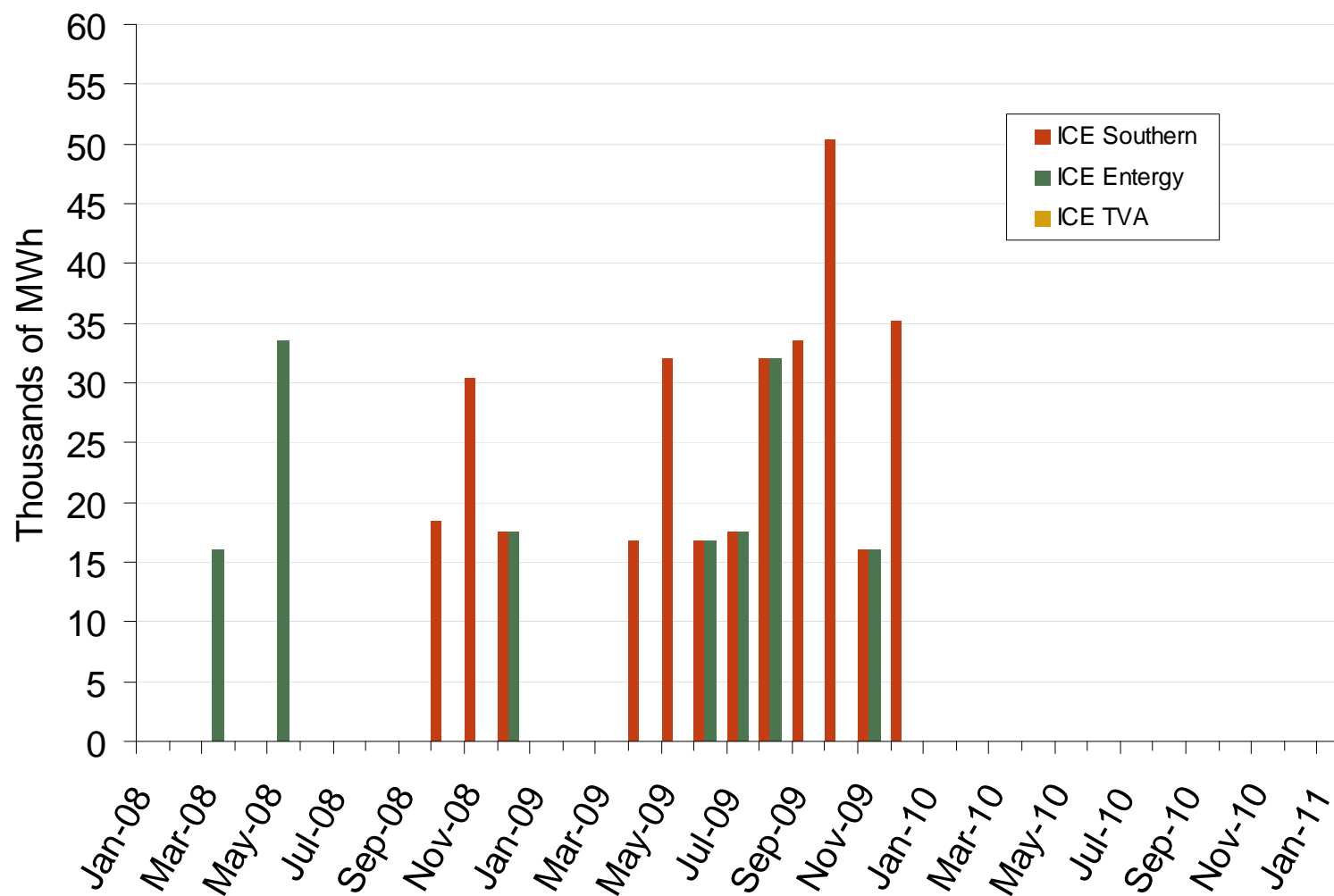
Updated December 8, 2009

1139

## Southeast Electric Market: Physical Market Volumes

Federal Energy Regulatory Commission • Market Oversight @ FERC.gov

## Southeast Forward Volumes

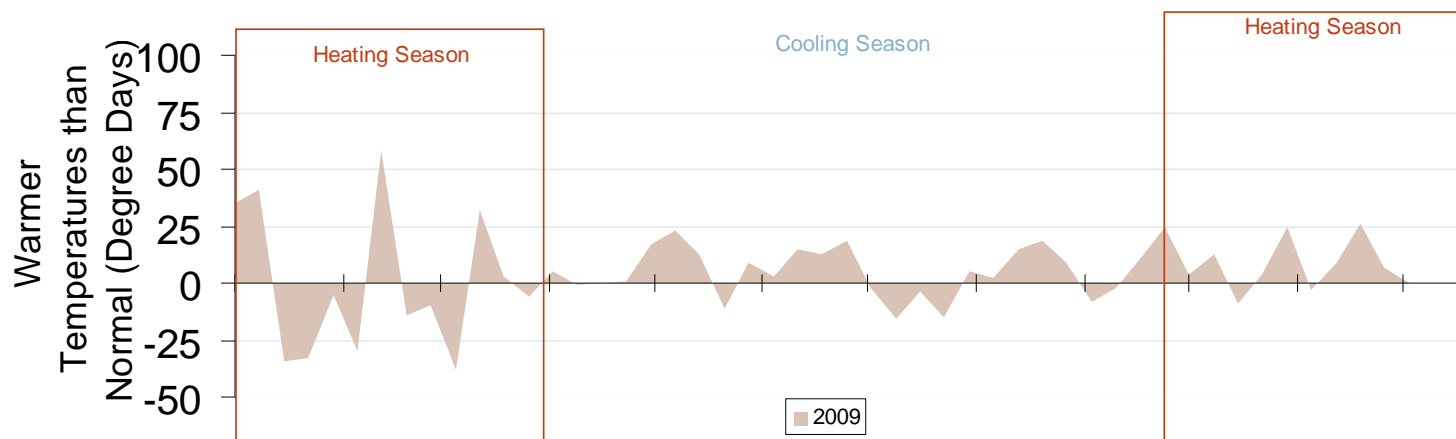
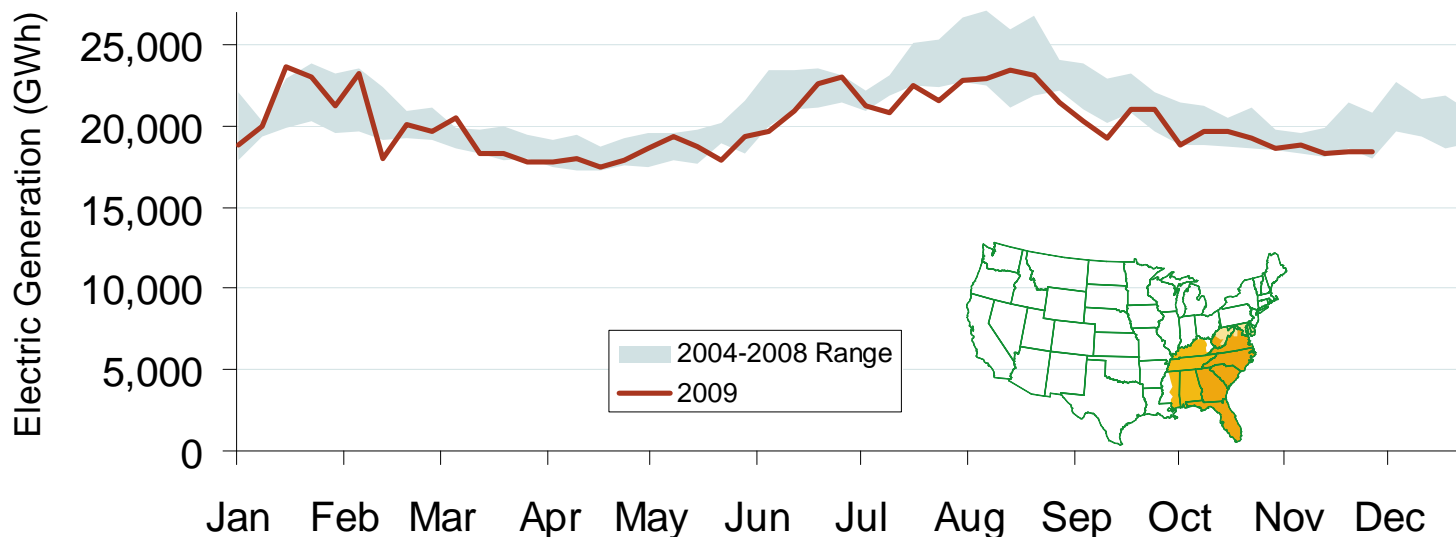


Source: Derived from ICE data. ICE on-peak forward (physical) volumes are for Entergy, Southern and TVA and include monthly, dual monthly, quarterly, and calendar year contracts traded for each month.

Updated December 8, 2009

1061

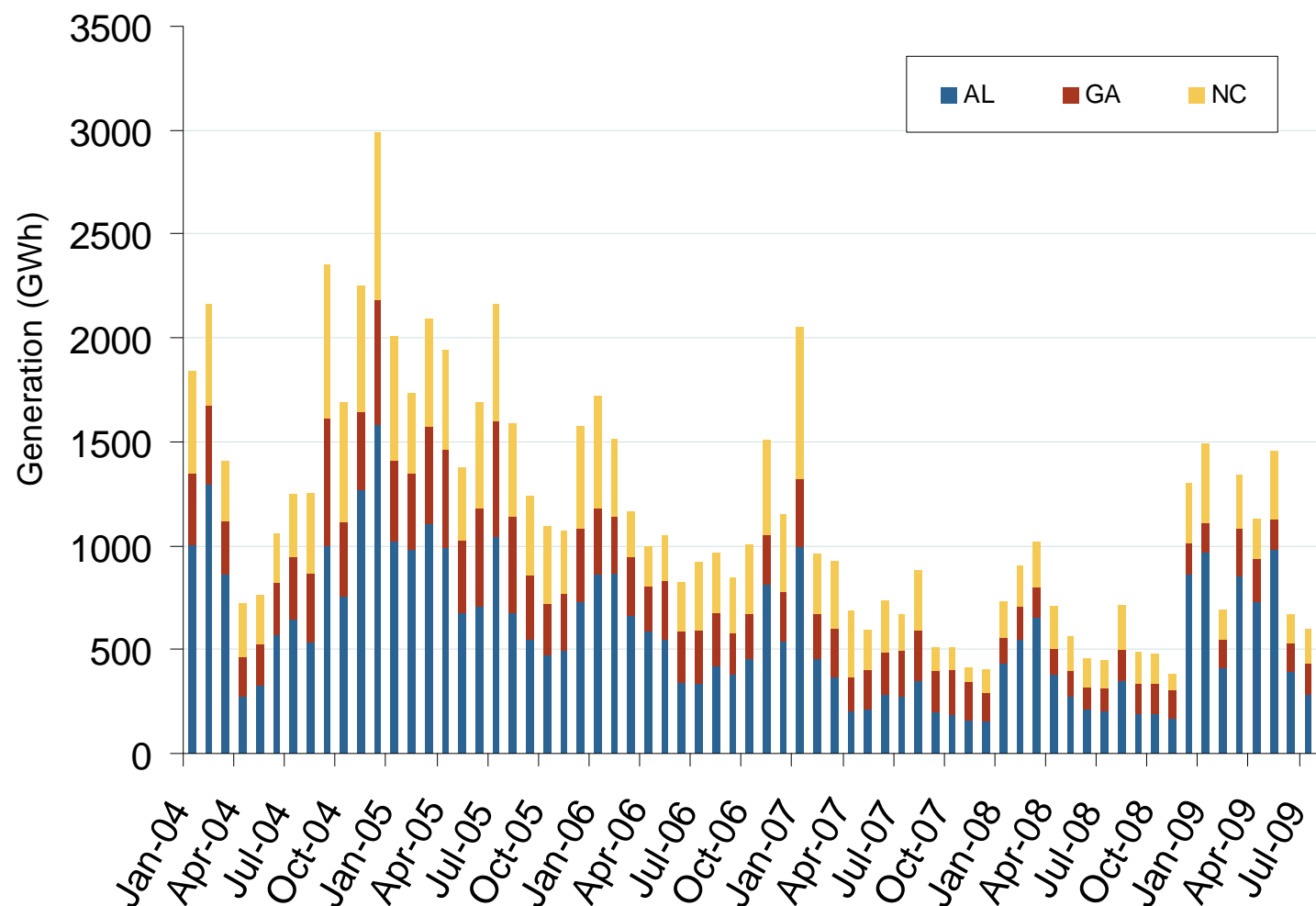
# Weekly Electric Generation Output and Temperatures Southeast Region



Source: Derived from *EI* and *NOAA* data.

Updated December 8, 2009

## Monthly Southeastern Hydroelectric Generation



Source: Energy Velocity, Derived from EIA and EPA data.

Updated December 8, 2009

1158