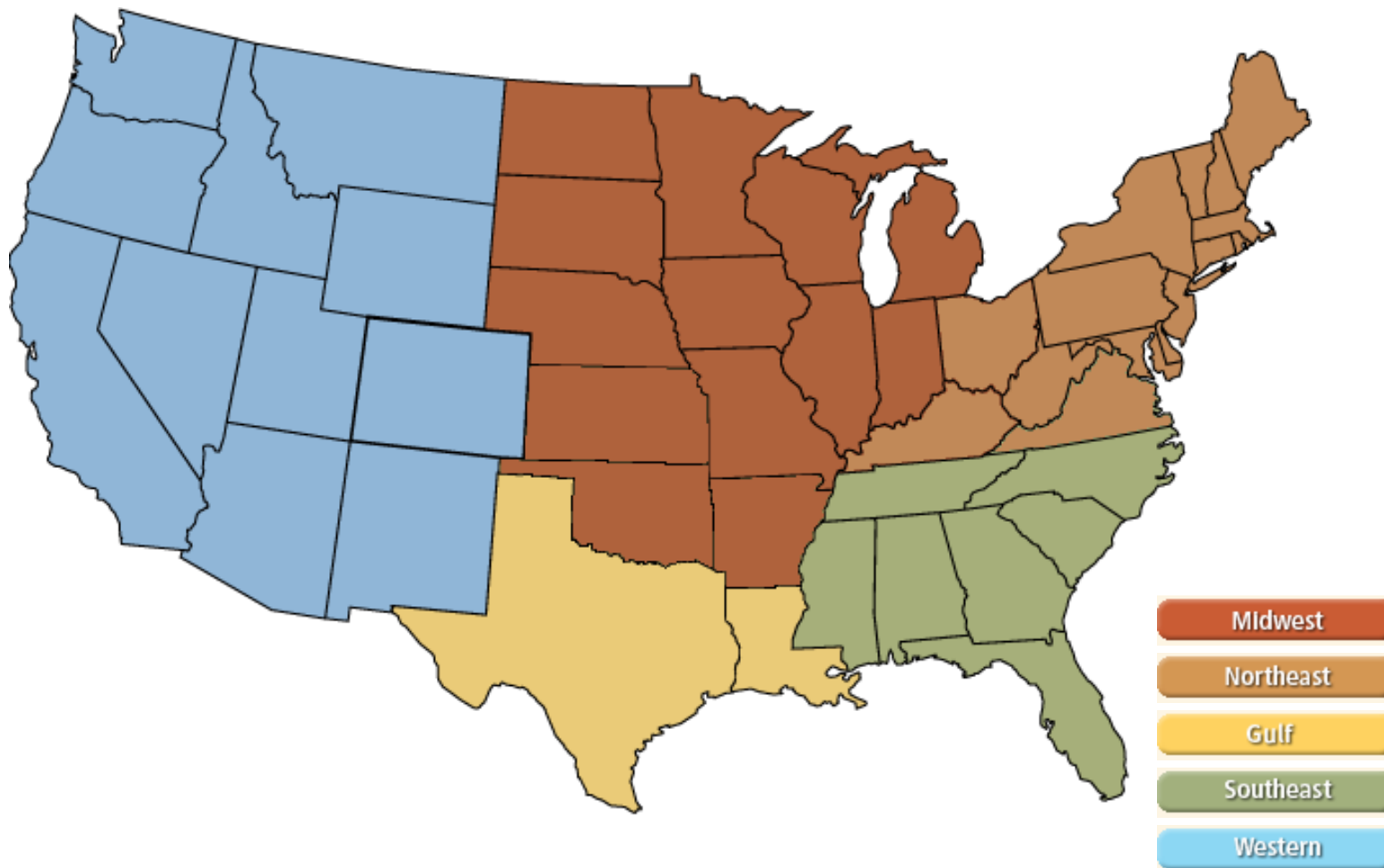
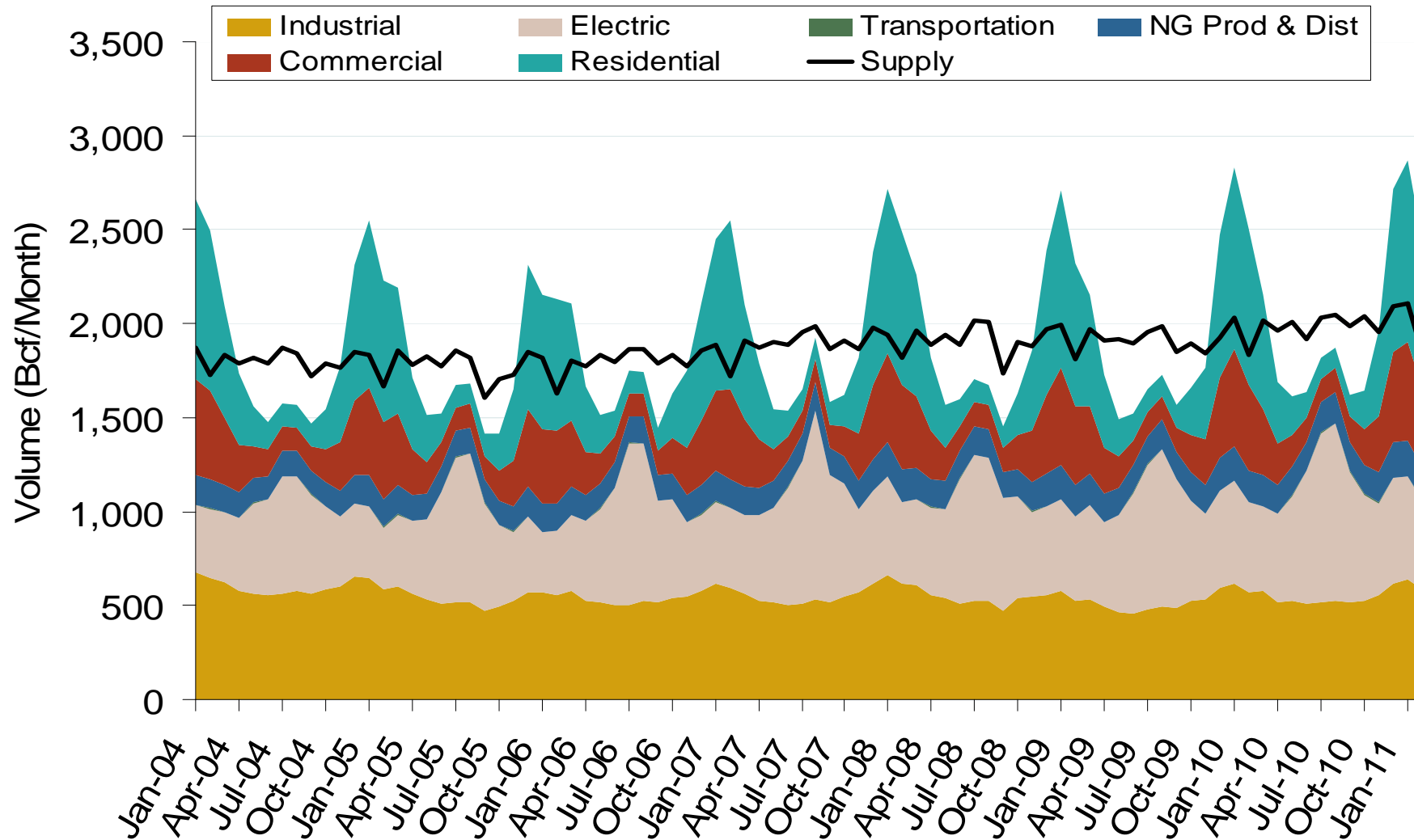


Natural Gas Market National Overview



Annual U.S. Natural Gas Consumption by Sector

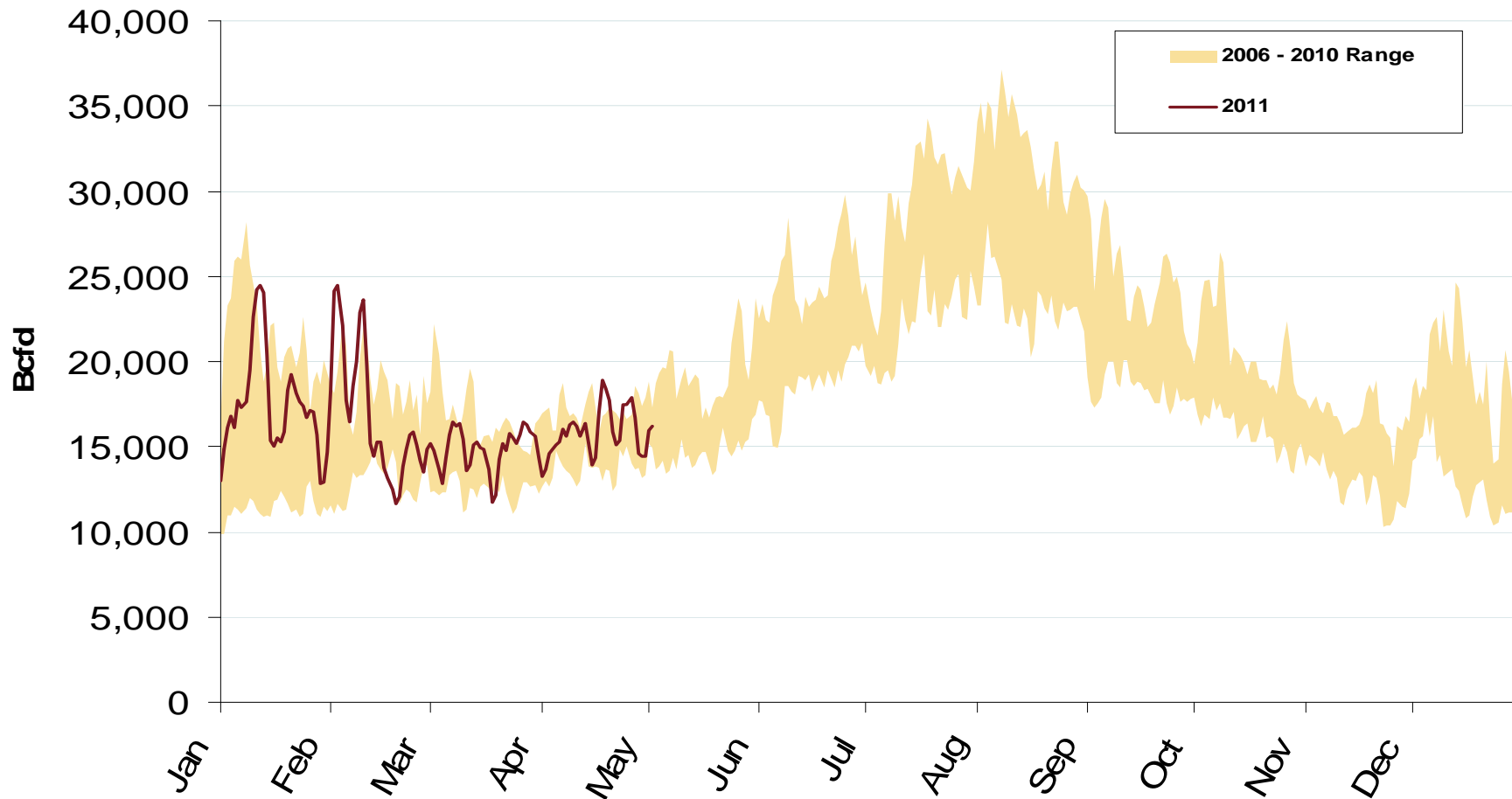


Note: Supply includes lower 48 state production, net pipeline imports, and LNG imports.

Source: Derived from *EIA data*
May 2011

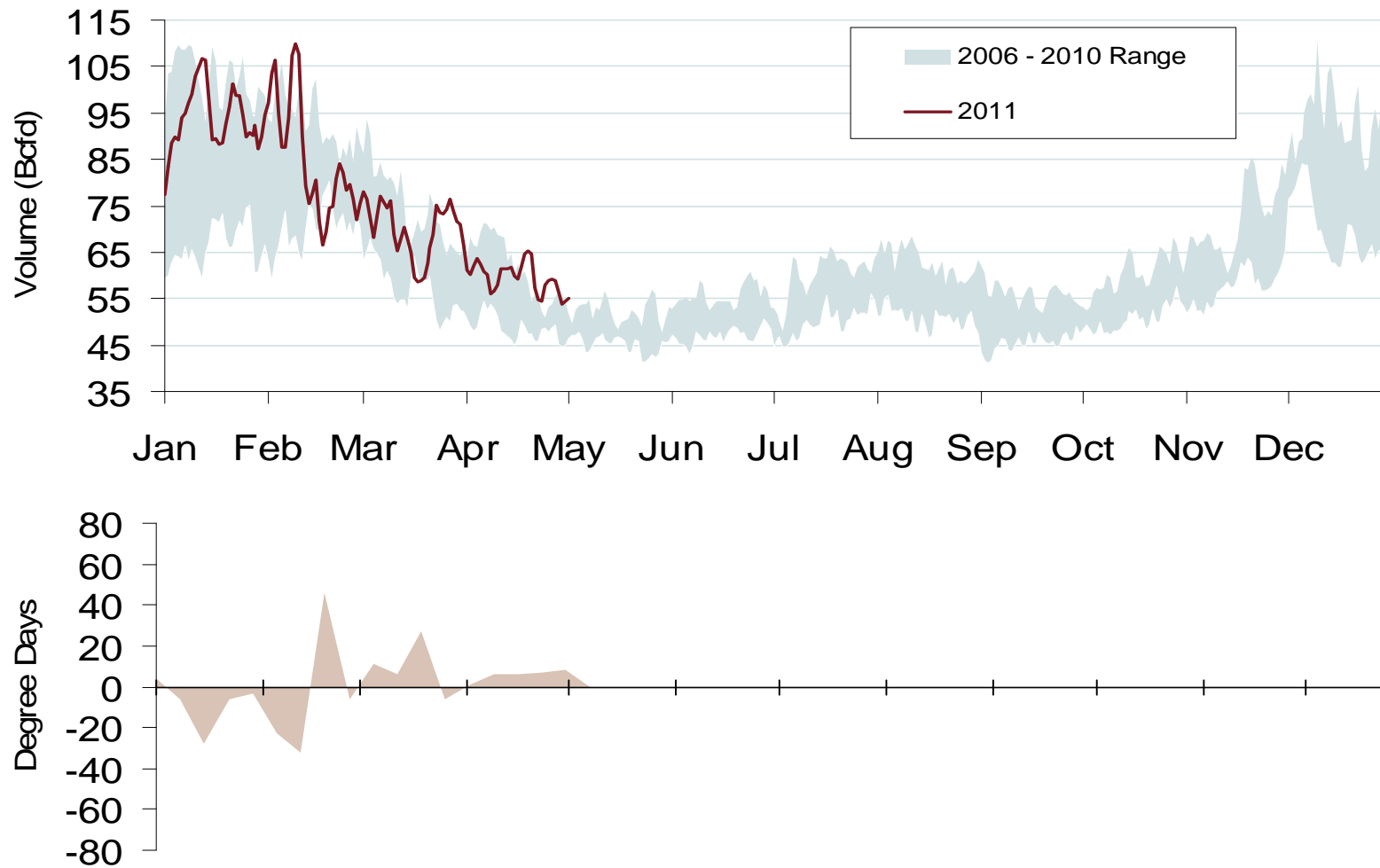
Updated May 6, 2011

U.S. Natural Gas Consumption for Power Generation



Source: Derived from *Bentek Energy* data.

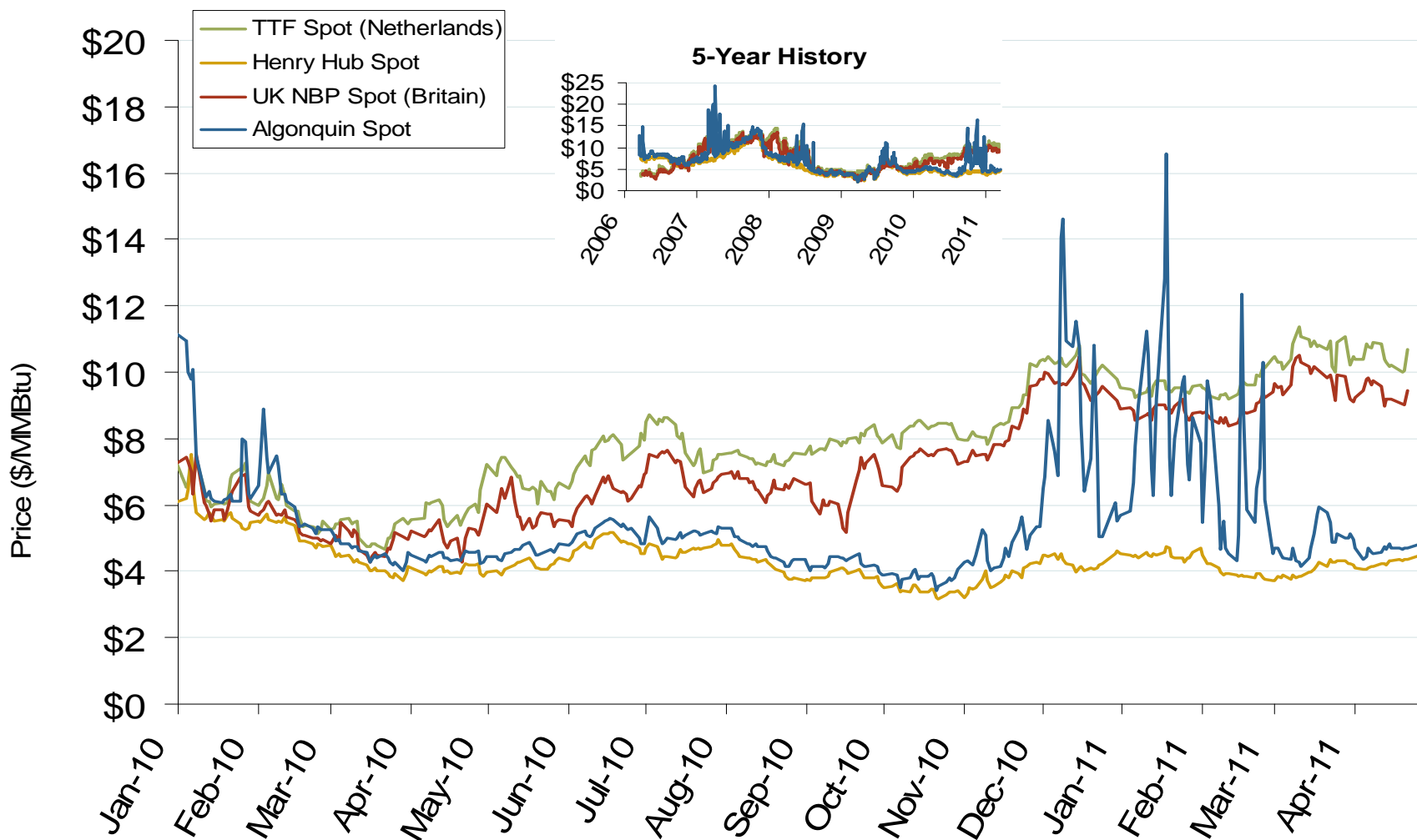
Total U.S. Natural Gas Demand (All Sectors) and Temperatures



Source: Derived from *Bentek Energy* and *Weekly NOAA* data.

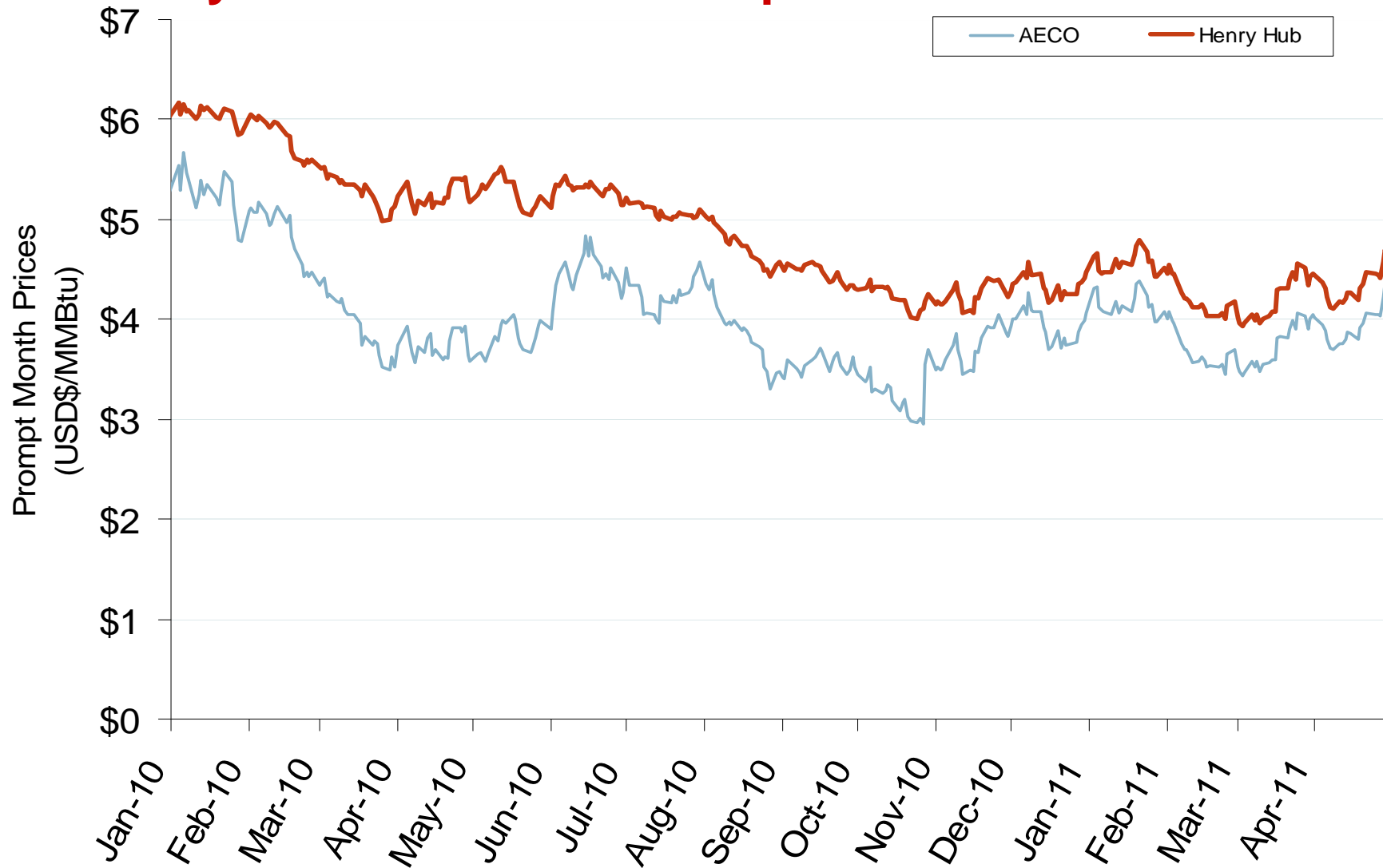
Updated May 6, 2011

Atlantic Basin European and US Spot Natural Gas Prices



Source: Derived from *Bloomberg* and *ICE* data.
May 2011

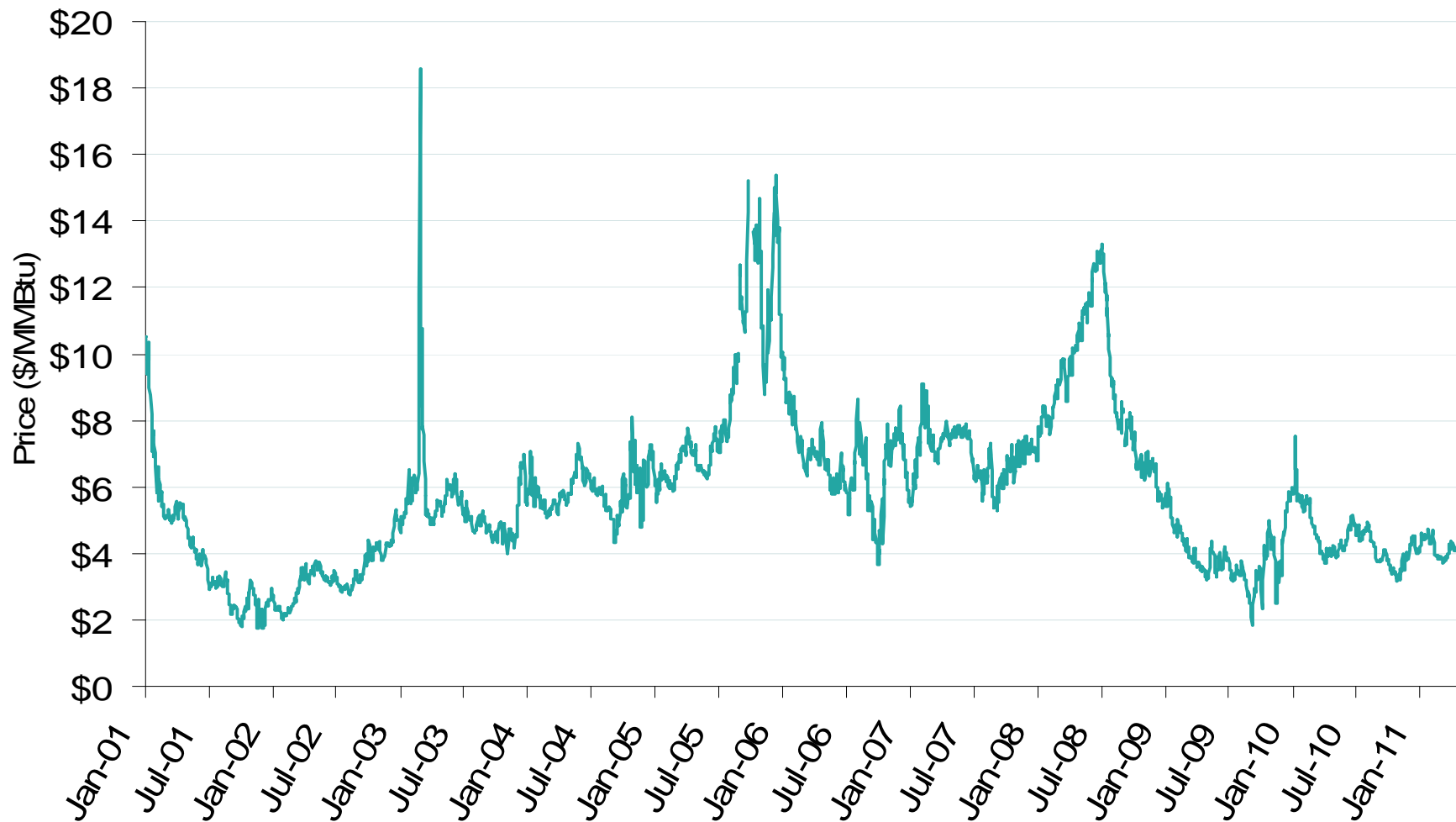
Henry Hub and AECO Prompt-Month Futures Prices



Natural Gas Market Overview: Henry Hub Spot Prices

Federal Energy Regulatory Commission • Market Oversight • www.ferc.gov/oversight

Henry Hub Natural Gas Daily Spot Prices, 2001-2011

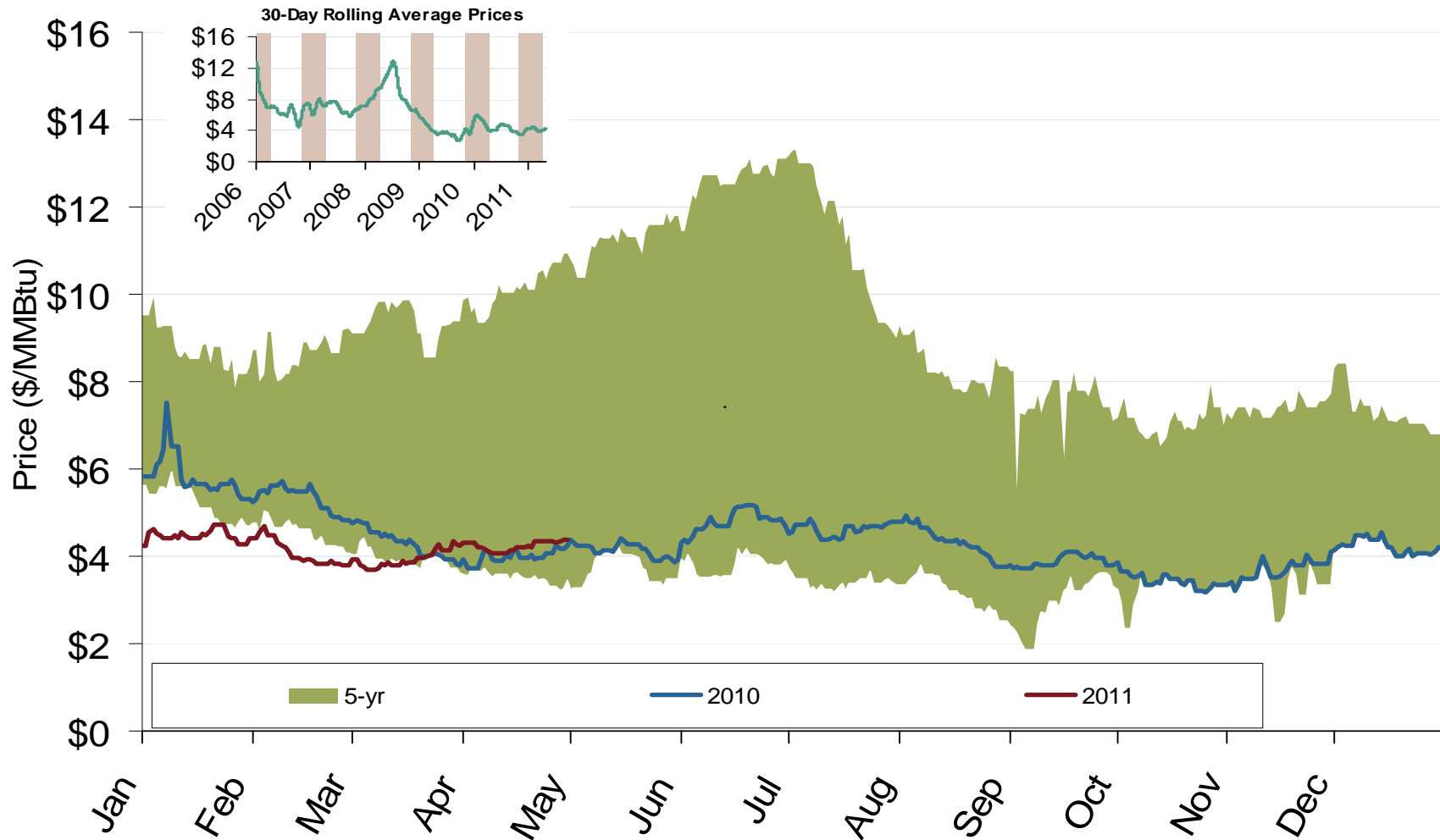


Source: Derived from Platts data.

Natural Gas Market Overview: 5 Year Range of Henry Hub Spot Prices

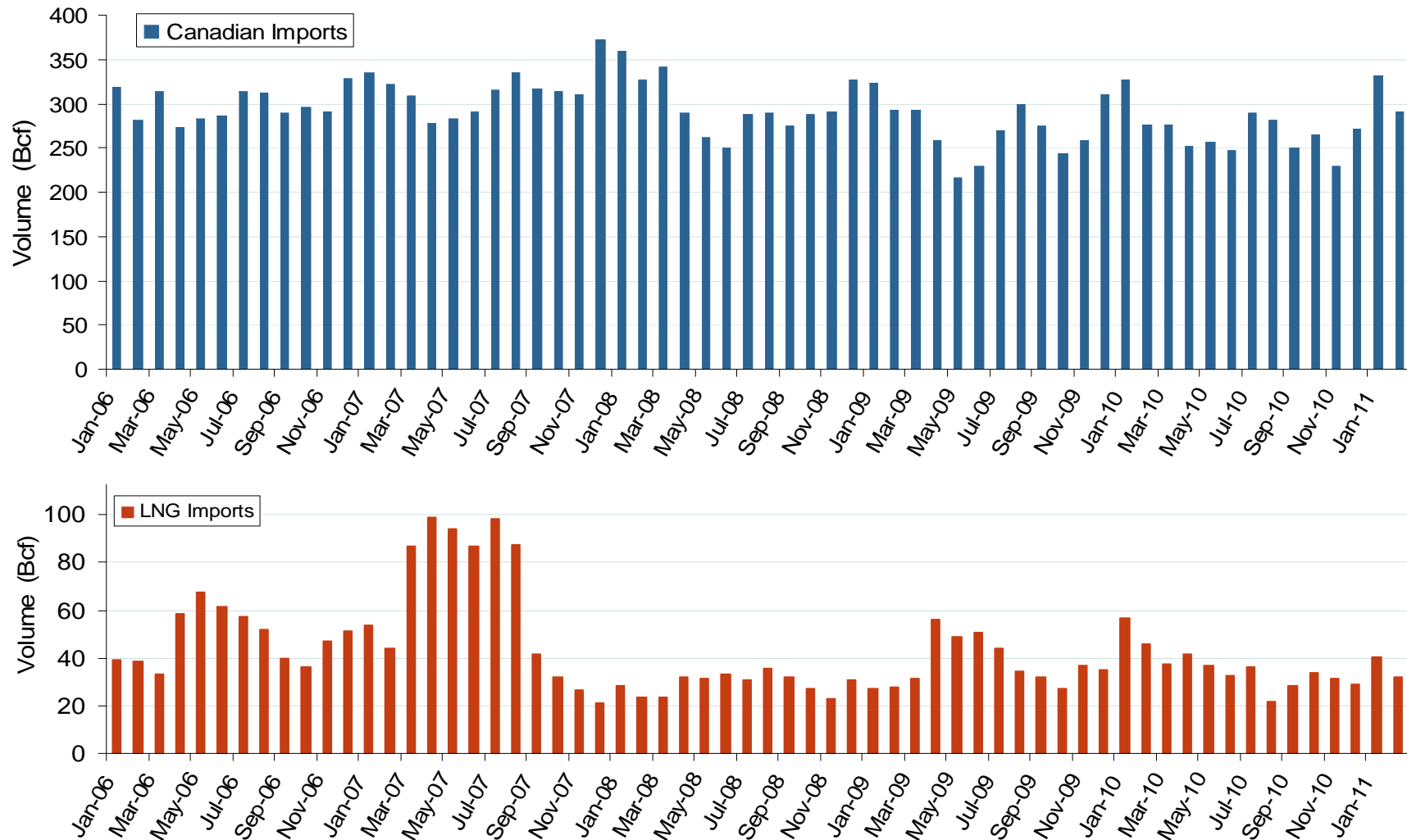
Federal Energy Regulatory Commission • Market Oversight • www.ferc.gov/oversight

Henry Hub Natural Gas Daily Spot Prices



Source: Derived from *Platts* data.

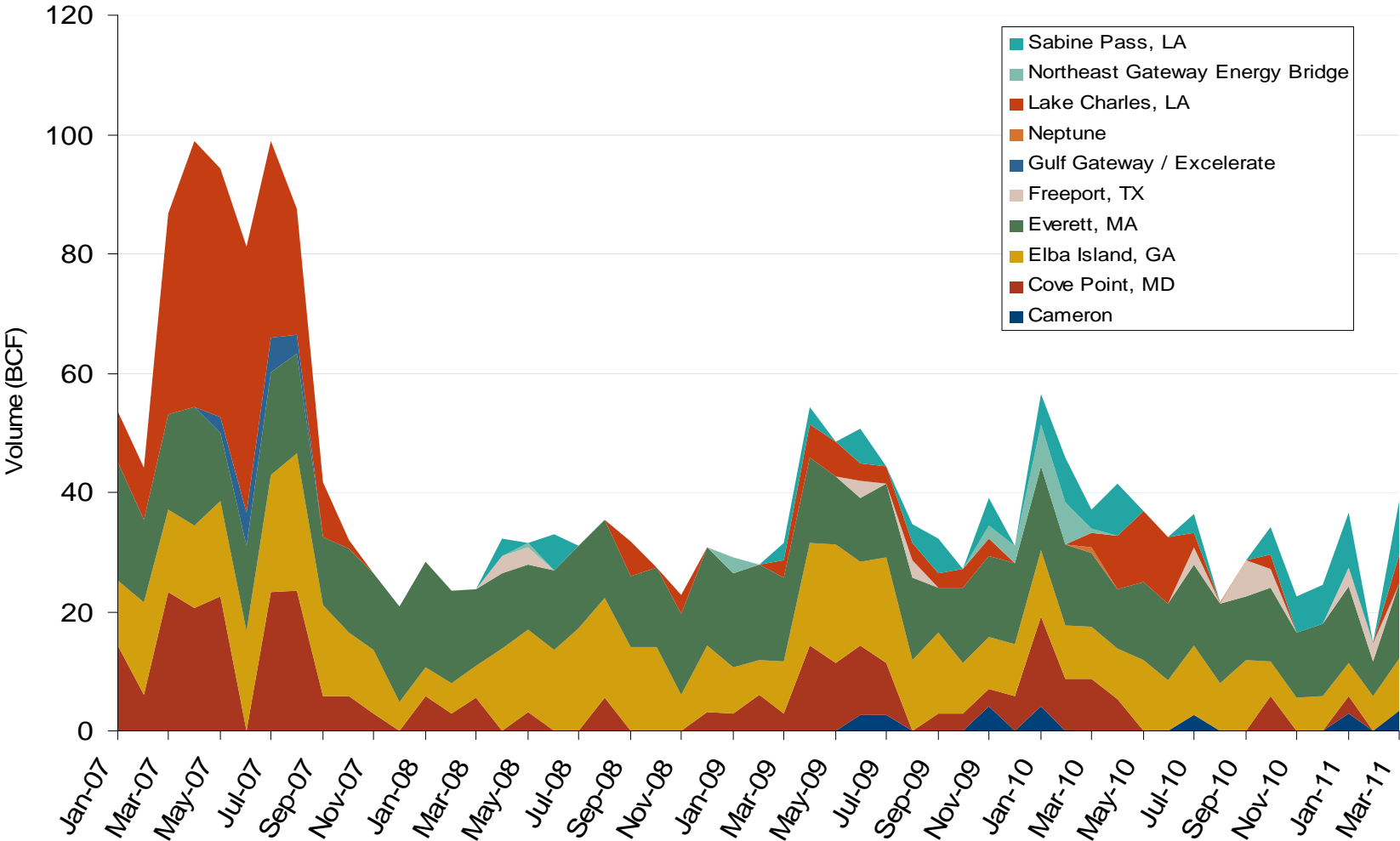
Canadian and LNG Natural Gas Imports Into the U.S.



Source: Derived from EIA Natural Gas Monthly data.
May 2011

Updated May 6, 2011

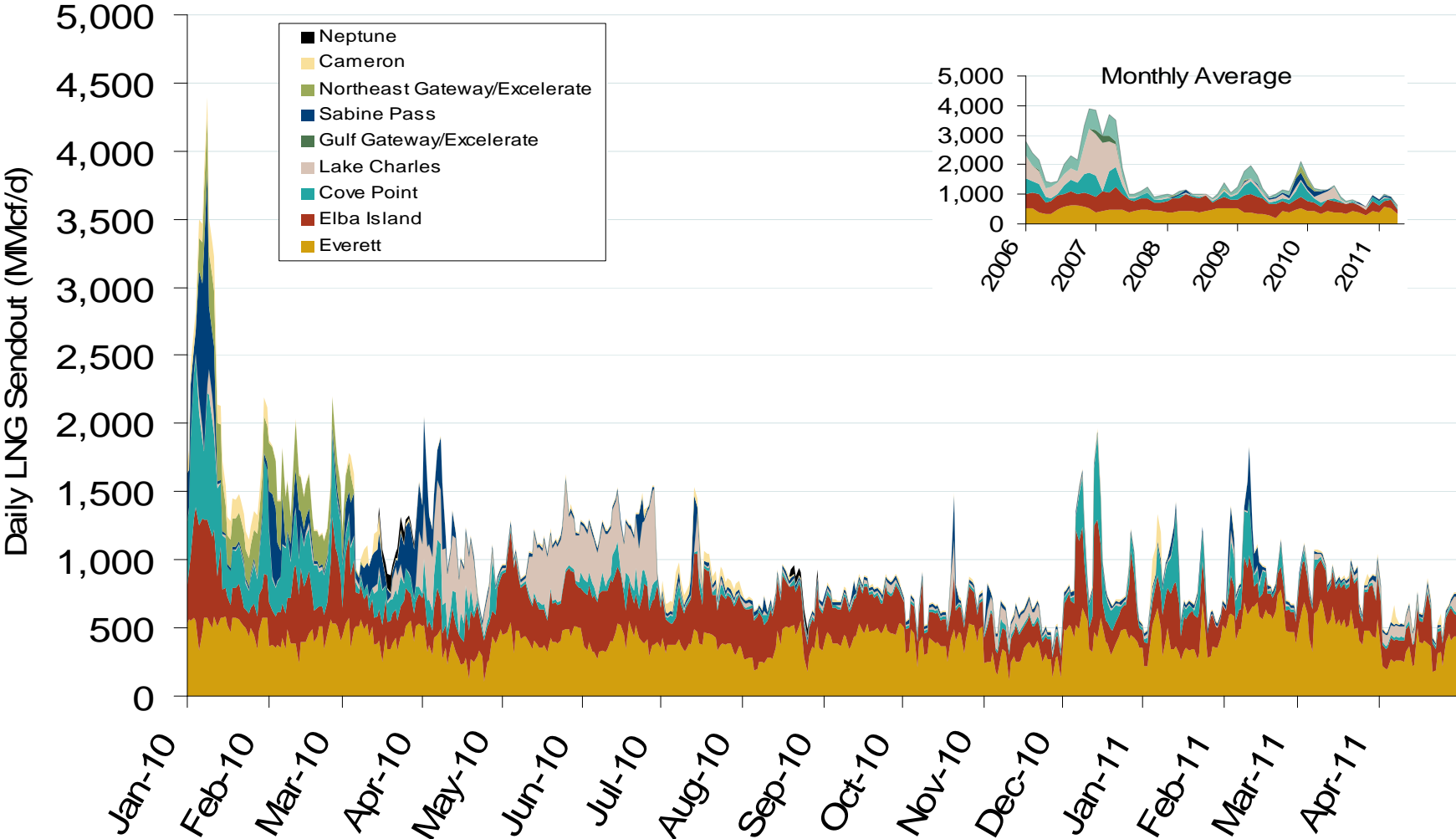
Monthly Gas Imports at Existing U.S. LNG Facilities



Source: Derived from DOE Office of Fossil Energy data.
May 2011

Updated May 6, 2011

Daily Gas Sendout from Existing LNG Facilities*



Source: Derived from Bentek data.

* Everett data includes flows onto the AGT and TGP interstate lines, plus estimates of flows to the Mystic 7 power plant, Keyspan Boston Gas, and LNG trucked out of the terminal. Excludes Freeport LNG which flows via intrastate pipelines.

Updated May 6, 2011

World LNG Estimated June 2011 Landed Prices



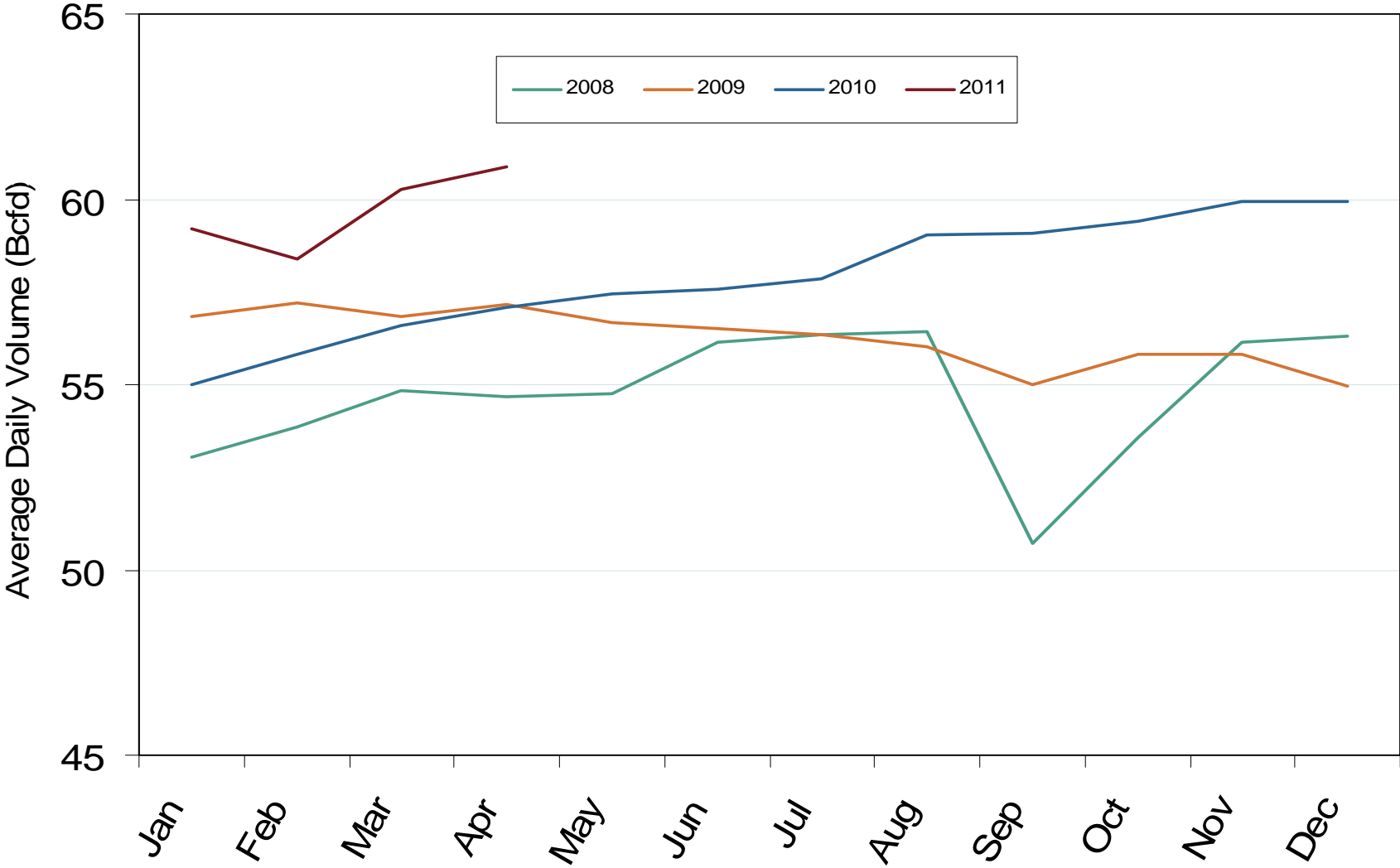
Source: *Waterborne Energy, Inc.* Data in \$US/MMBtu.

May 2011

Updated May 6, 2011

2169

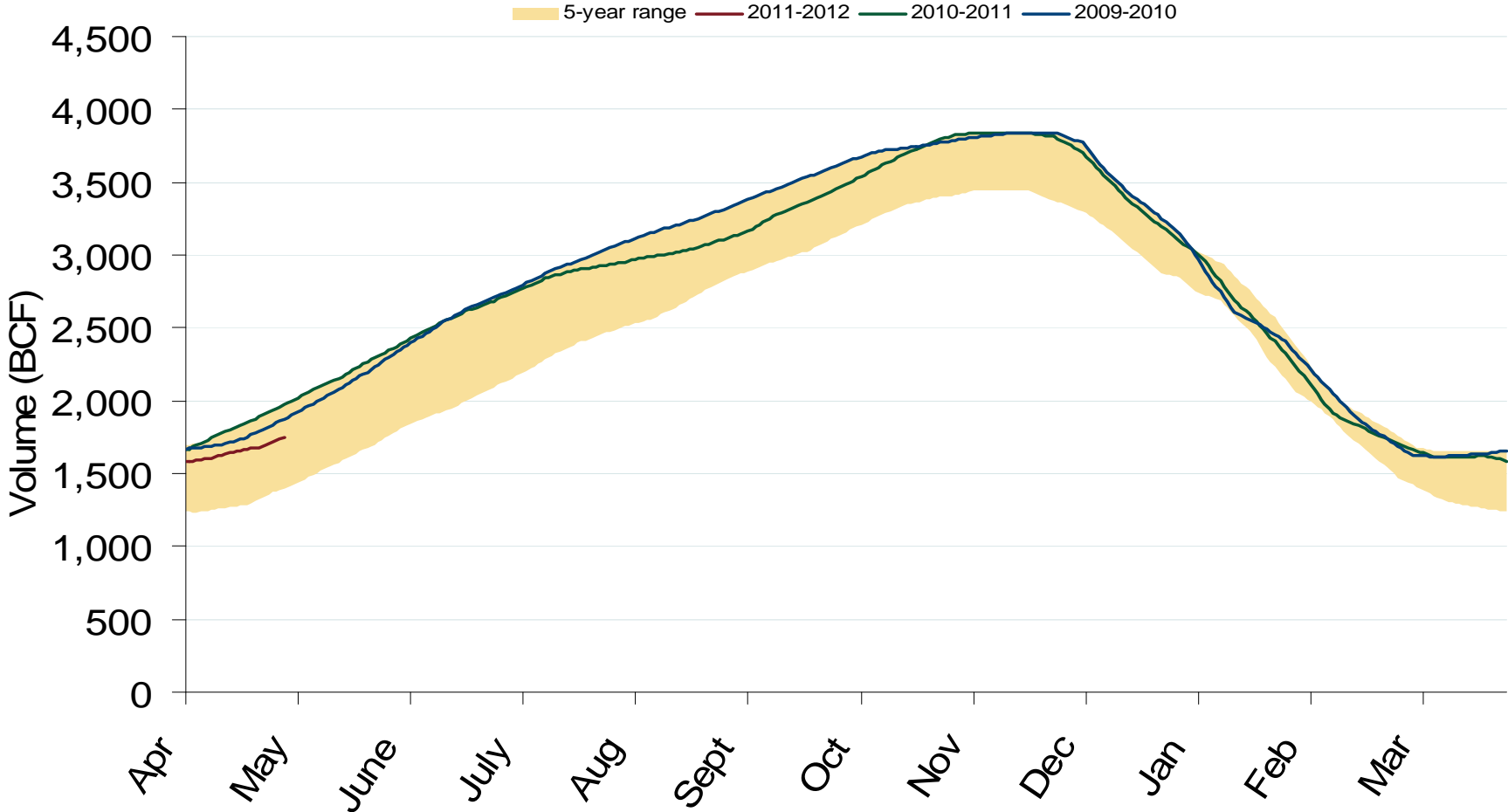
U.S. Dry Gas Production



Source: Derived from EIA and Bentek data.
May 2011

Updated May 6, 2011

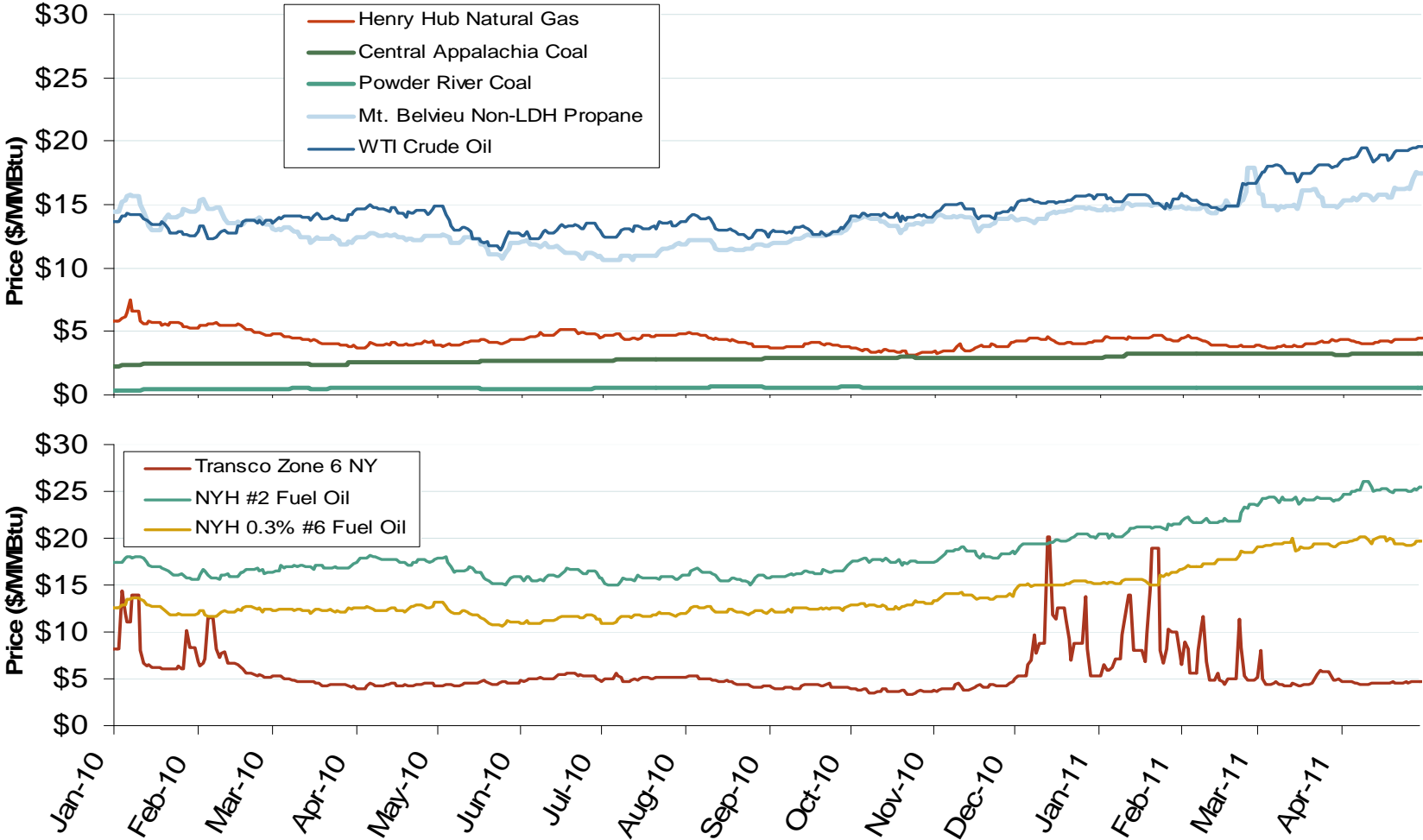
Total U.S. Working Gas in Storage



Source: Derived from EIA data.
May 2011

Updated May 6, 2011

Oil, Coal and Natural Gas Daily Spot Prices

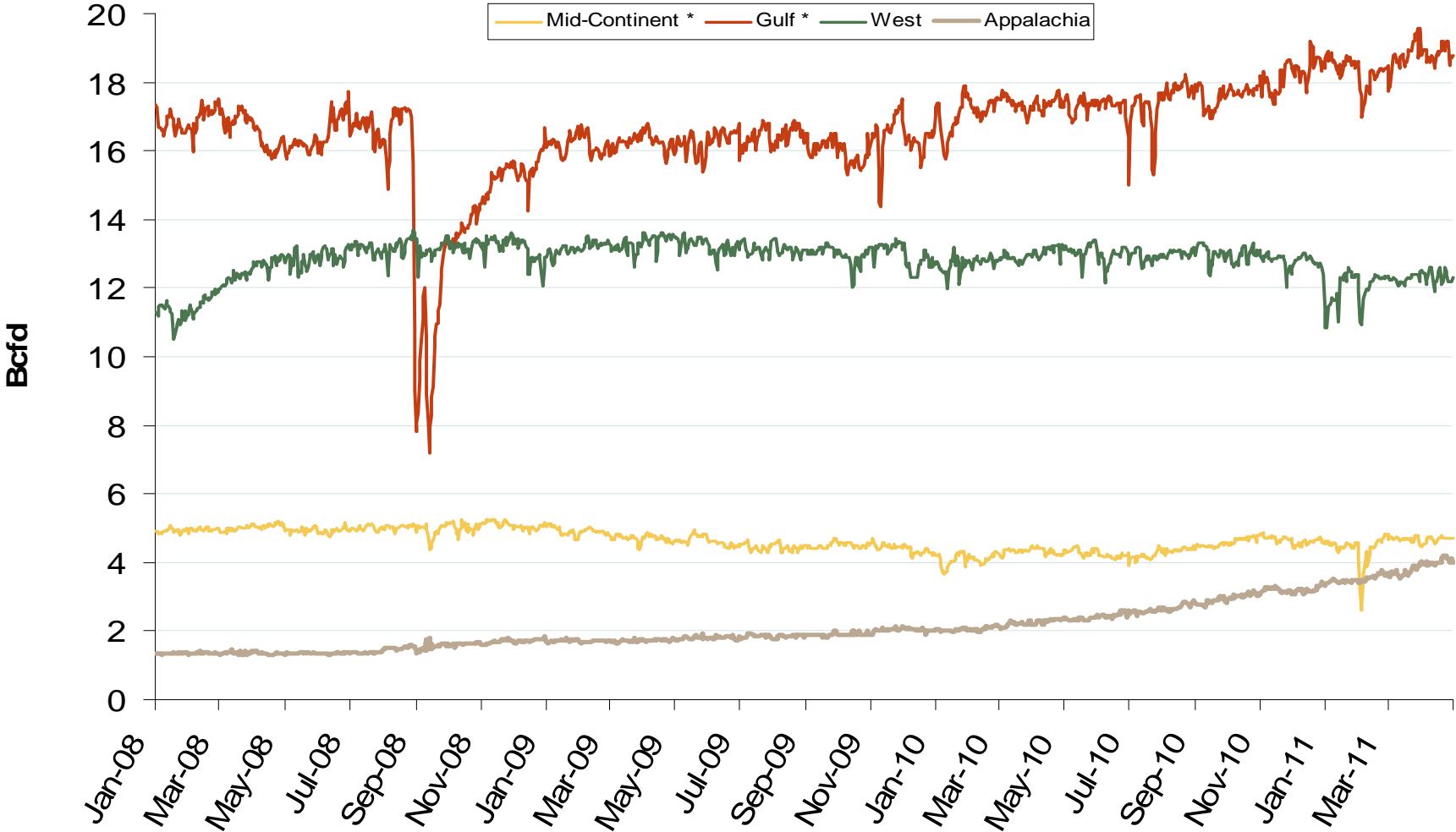


Source: Derived from ICE and Bloomberg data.

Note: Coal prices are quoted in \$/ton. Conversion factors to \$/MMBtu are based on contract specifications of 12,000 btus/pound for Central Appalachian coal and 8800 btus/pound for Powder River Basin coal.

Updated May 6, 2011

Regional Natural Gas Production



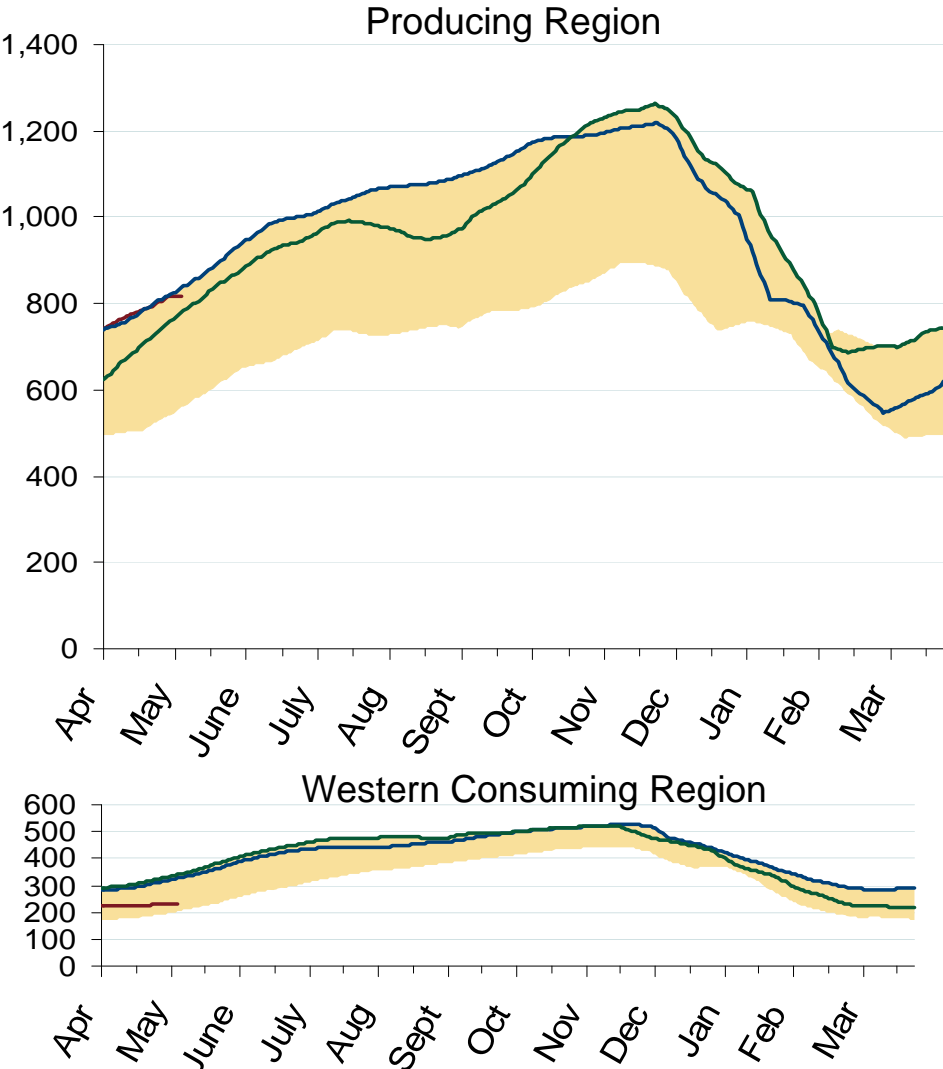
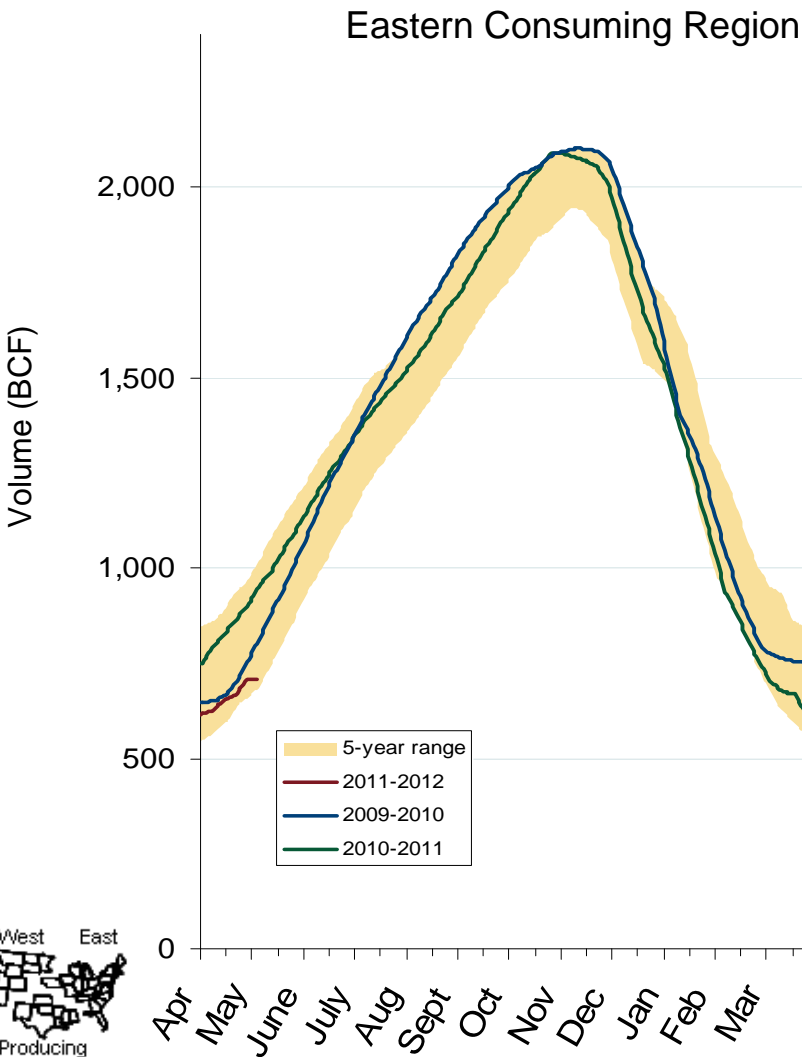
Source: Derived from Bentek data.

* On July 1, 2009 Bentek redefined its regions, moving some of the southern Midcontinent production to the Southeast, which is included in Gulf series.

May 2011

Updated May 6, 2011

Regional Totals of Working Gas in Storage

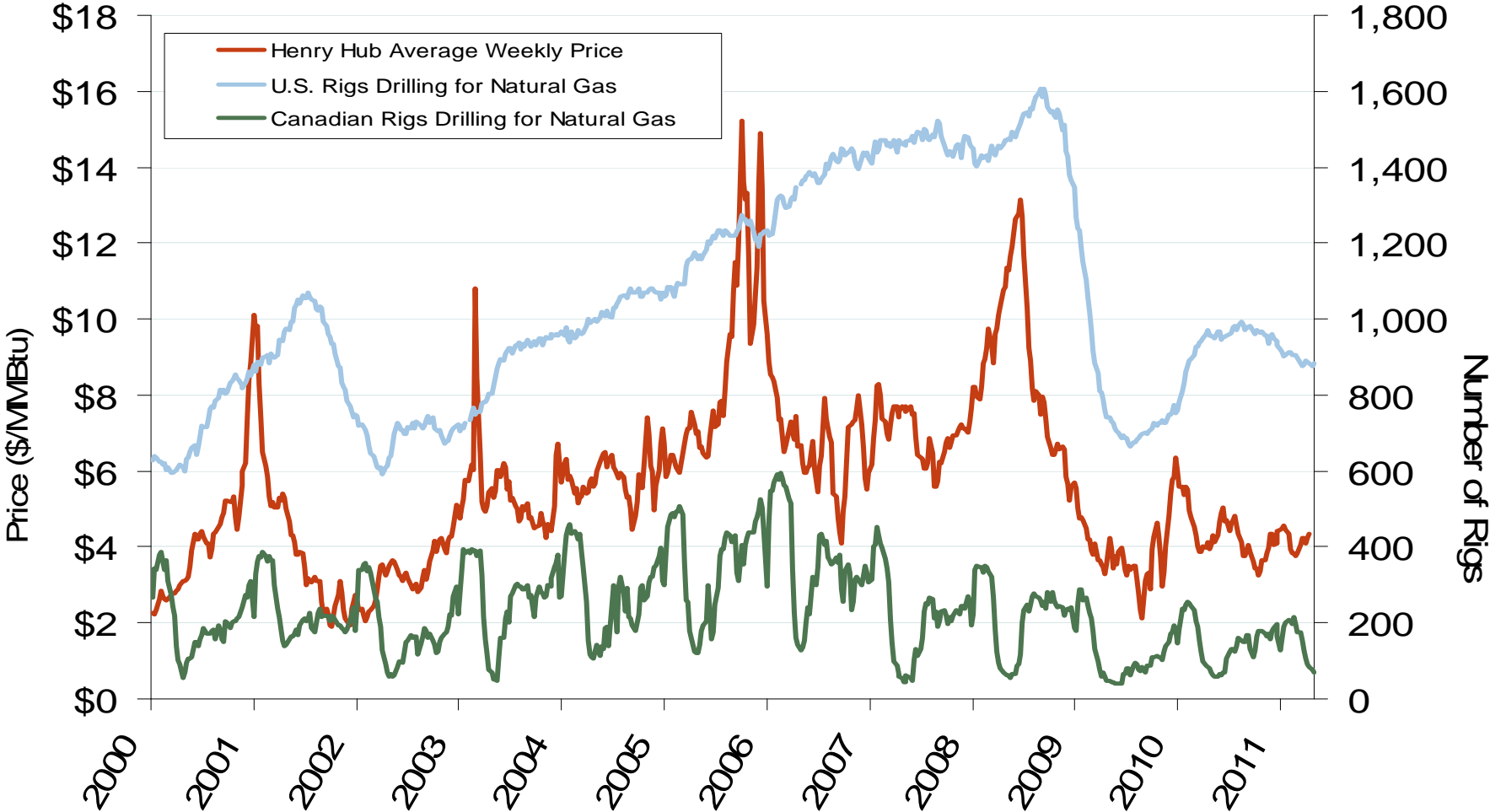


Source: Derived from EIA data.

May 2011

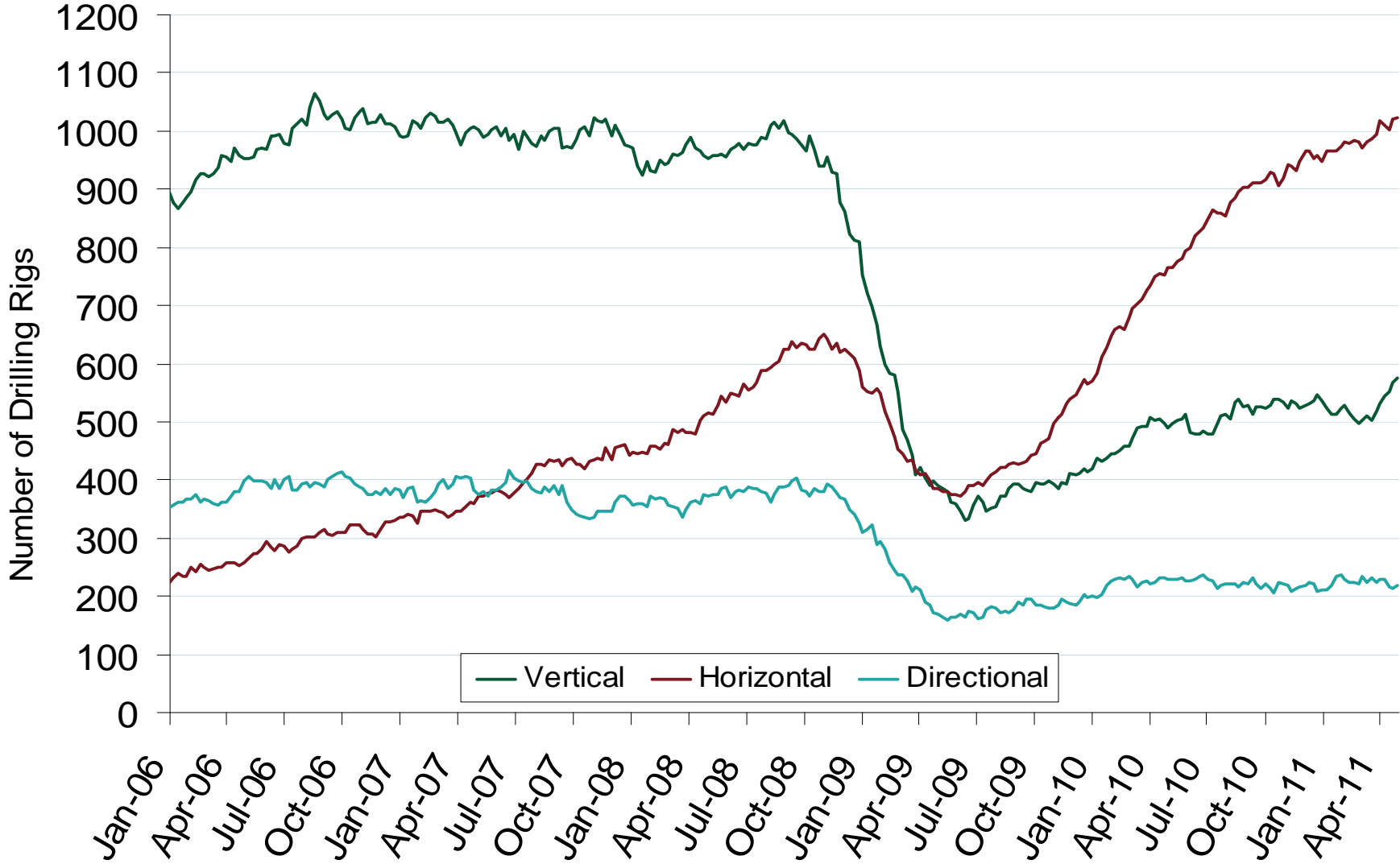
Updated May 6, 2011

U.S. and Canadian Natural Gas Drilling Rig Count and Daily Spot Prices



Source: Derived from *Platts* and *Baker Hughes* data.

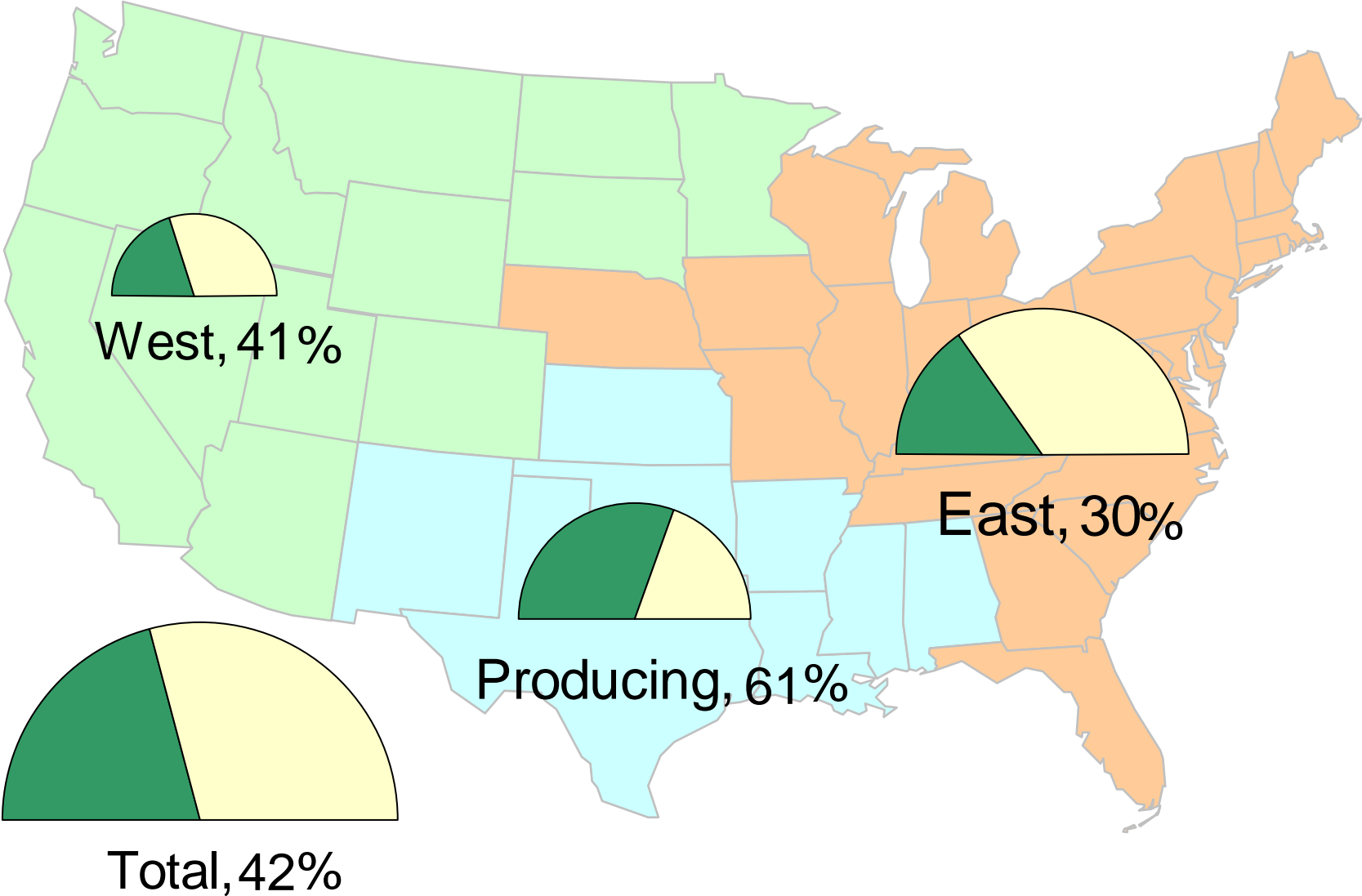
U.S. Oil and Natural Gas Drilling Rig Count by Type



Source: Derived from *Platts* and *Baker Hughes* data.

Updated May 6, 2011

Natural Gas Storage Inventories – April 22, 2011



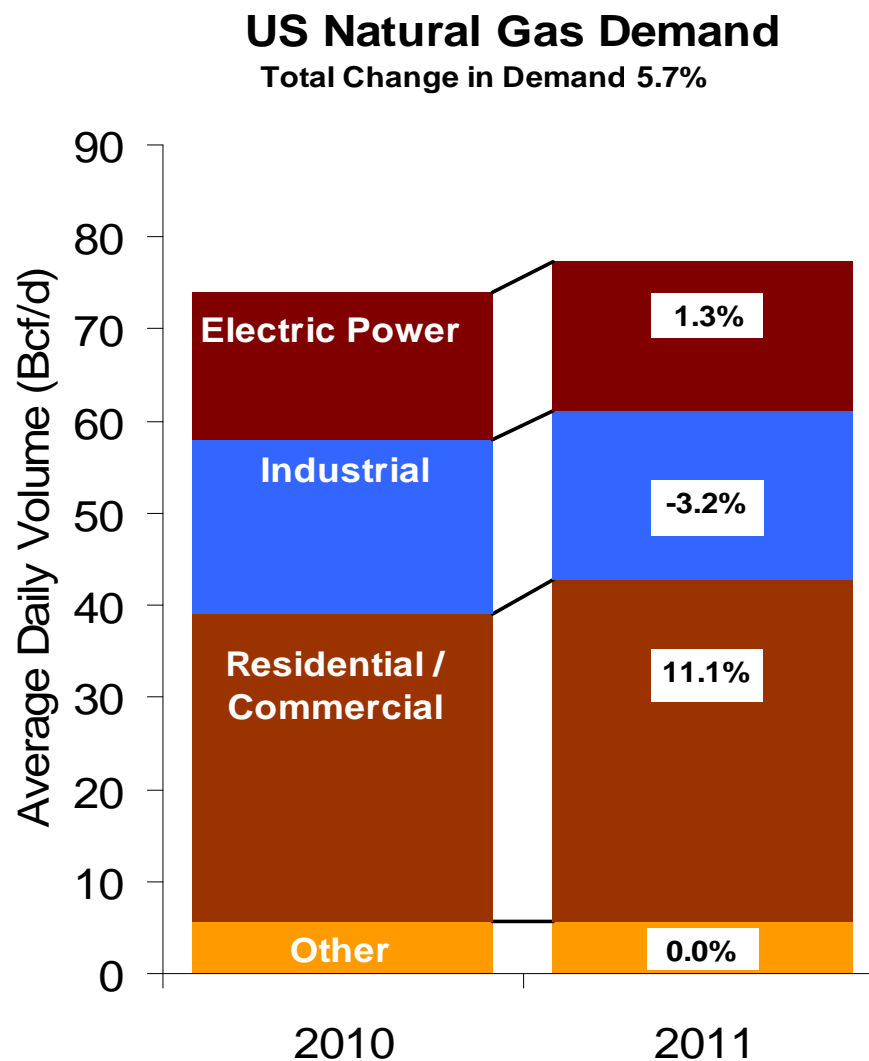
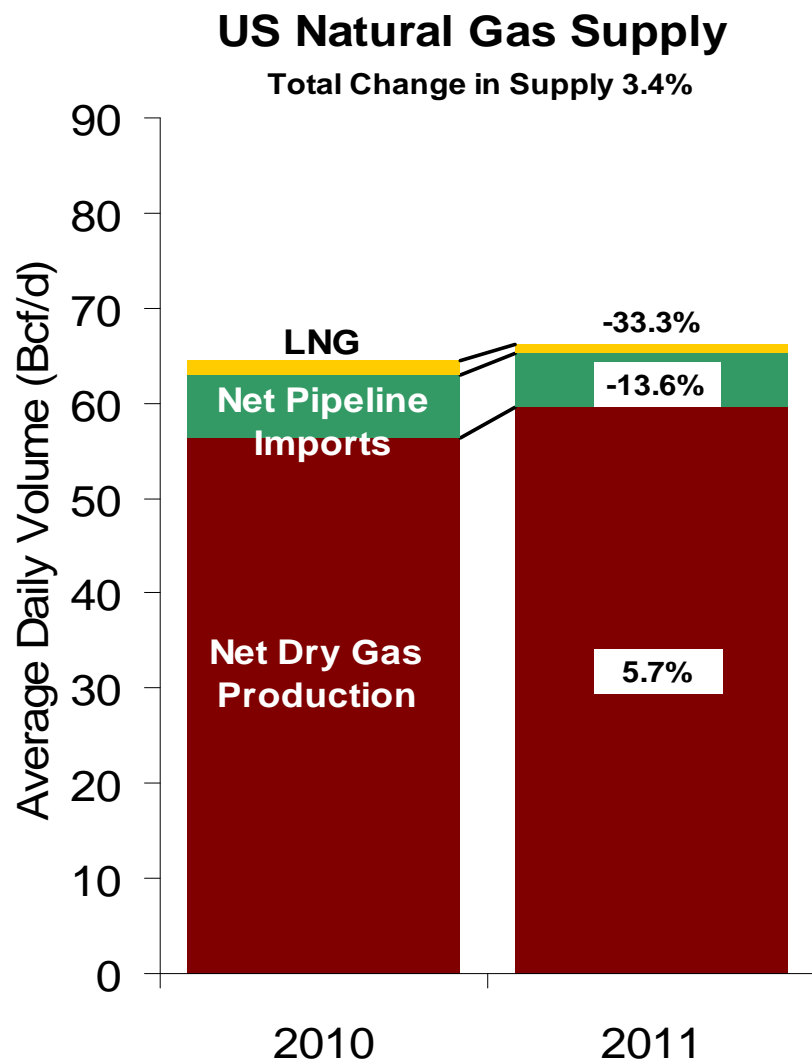
Source: Derived from EIA Storage and Estimated Working Gas Capacity data.

May 2011

Updated May 6, 2011

20022

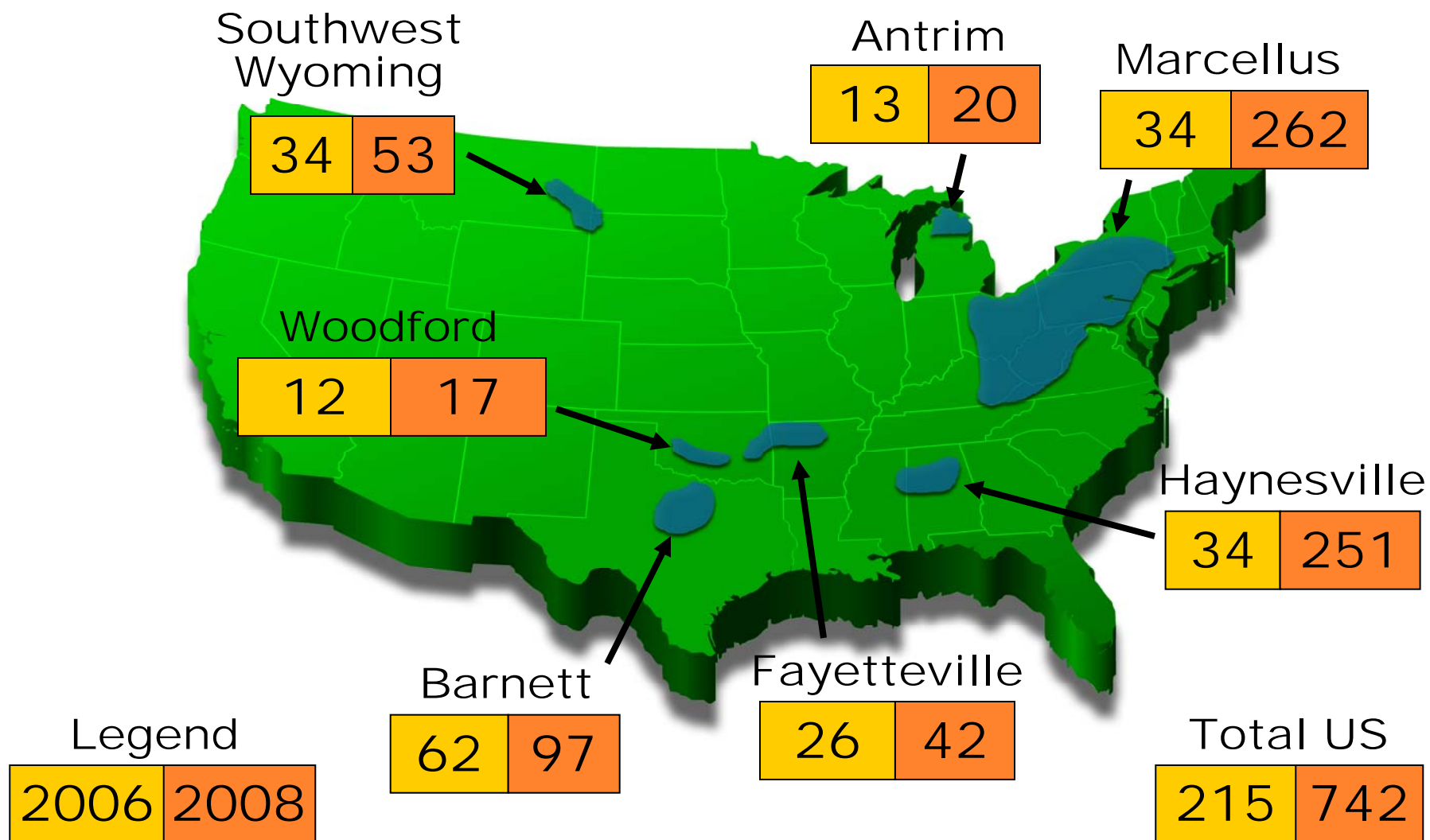
U.S. Natural Gas Supply and Demand 2010 vs. 2011: January - April



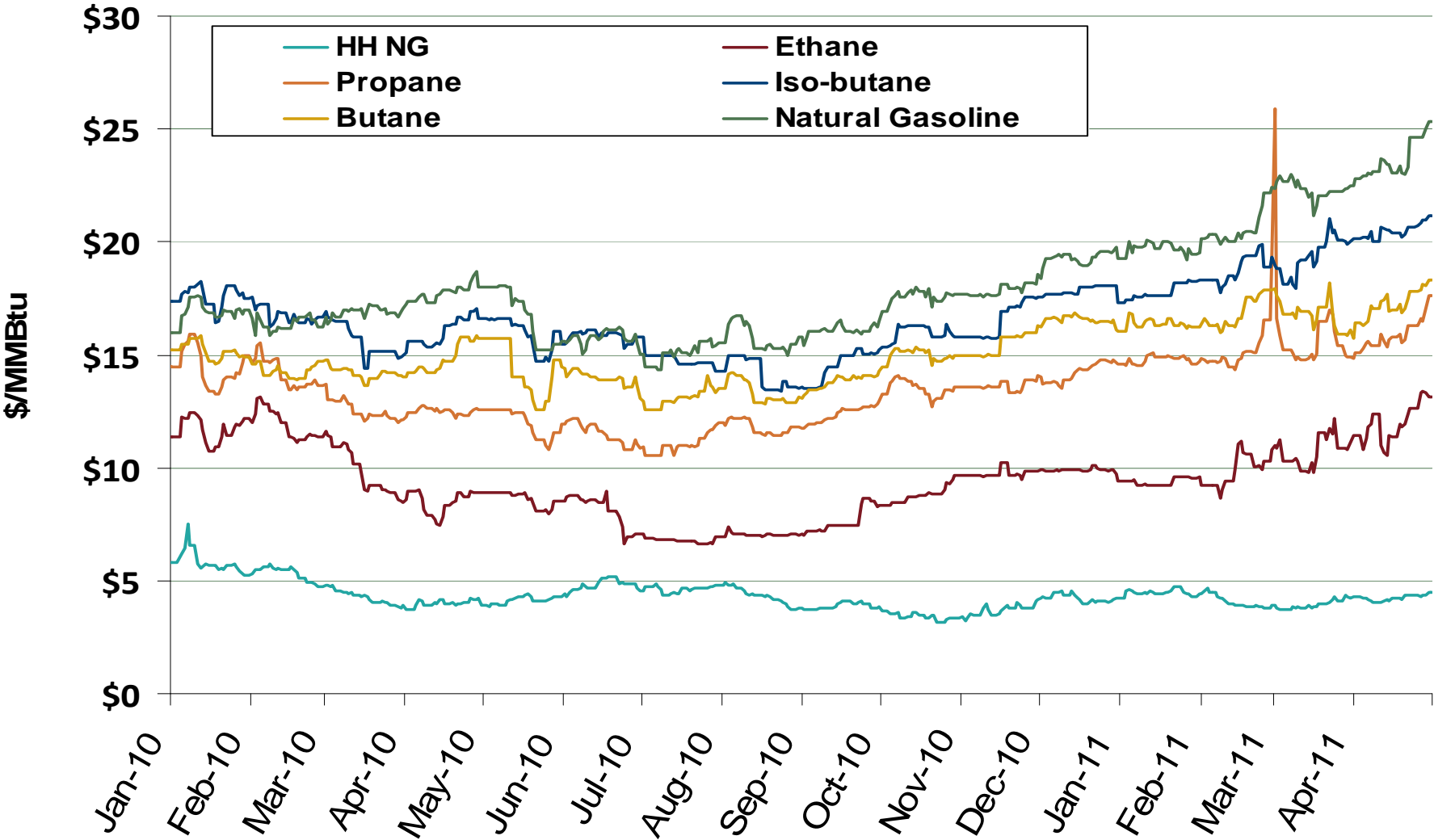
Source: Derived from *Bentek* data.
May 2011

Updated May 6, 2011

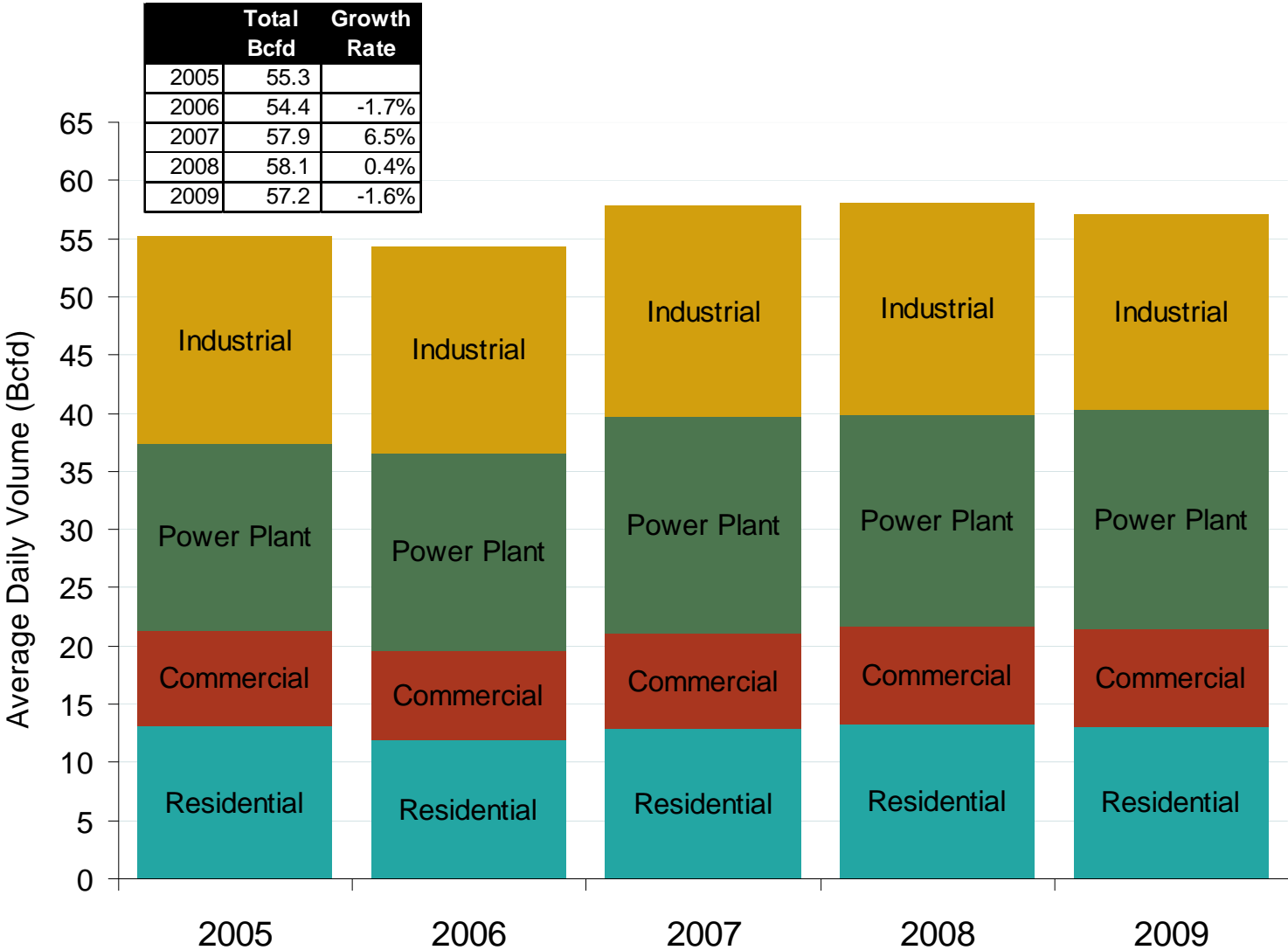
Estimated Recoverable NG For Select Shale Basins (TCF)



U.S. Natural Gas vs. Natural Gas Liquids (NGL) Prices

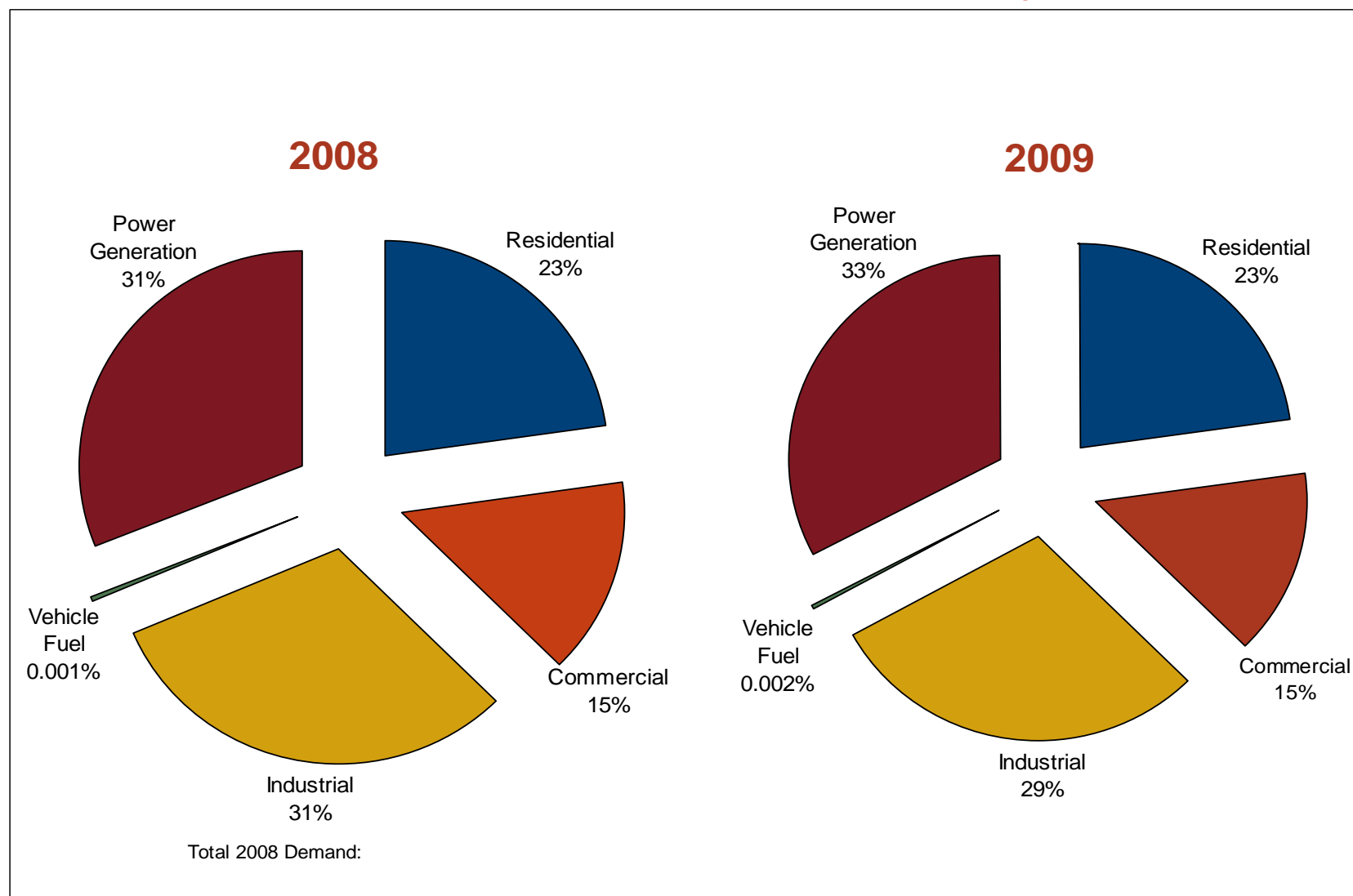


U.S. Natural Gas Consumption – Lower 48 States

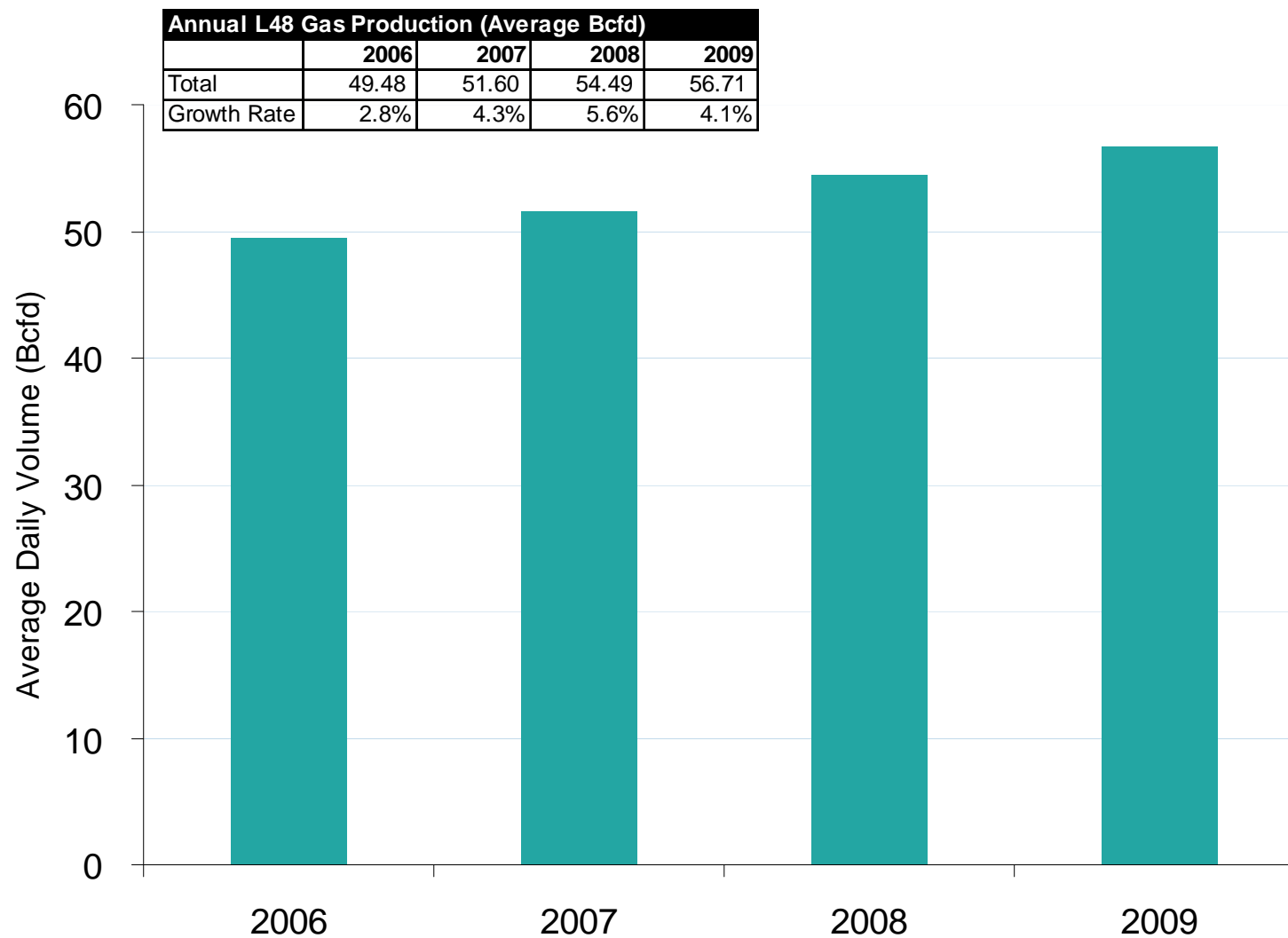


Source: Derived from EIA data
May 2011

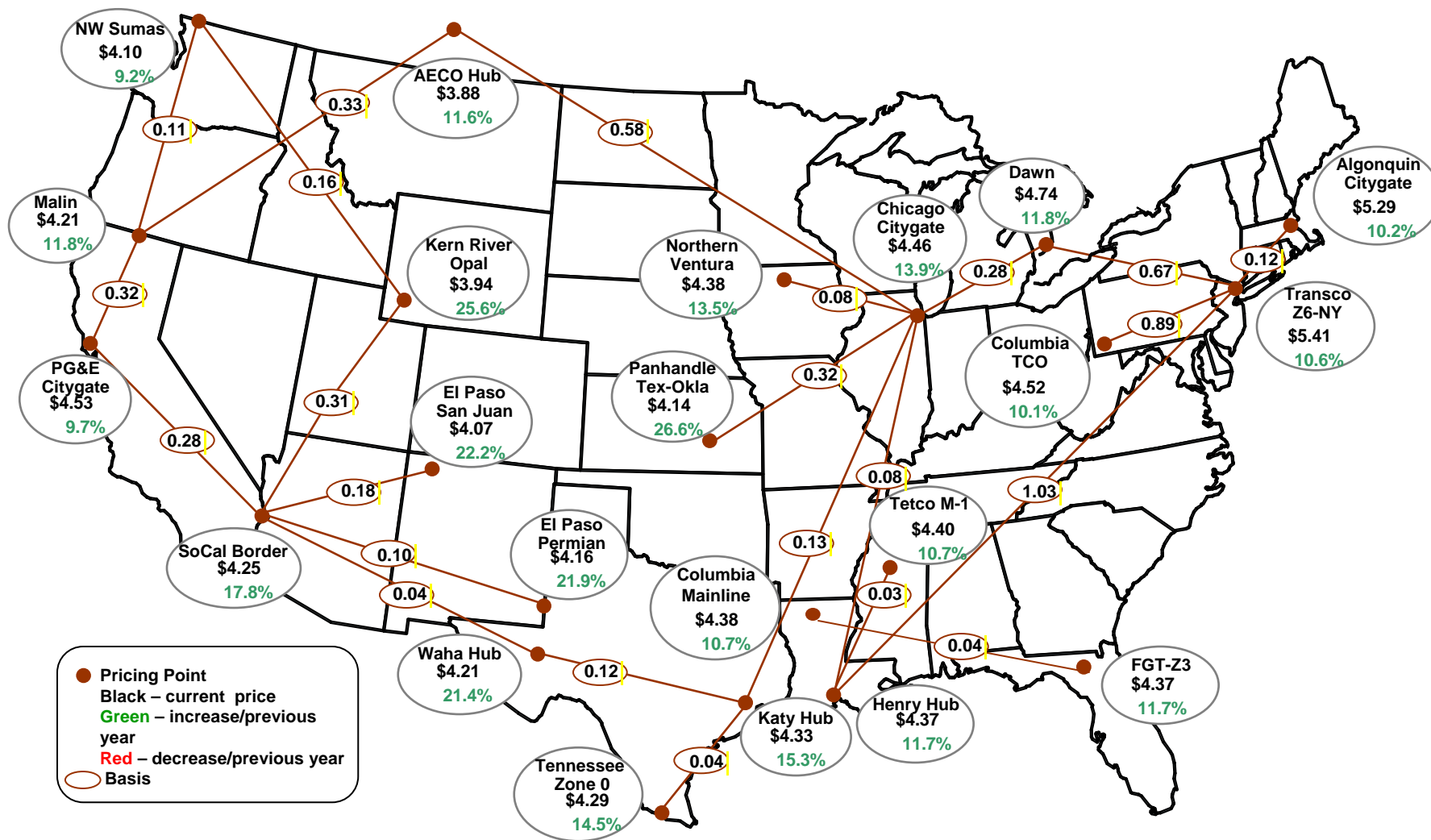
U.S. Annual Natural Gas Demand by Sector



U.S. Dry Gas Production – Lower 48 States



Average Spot Gas Prices, 2010 (\$MMBtu)



Source: Derived from *Platts* data.
May 2011