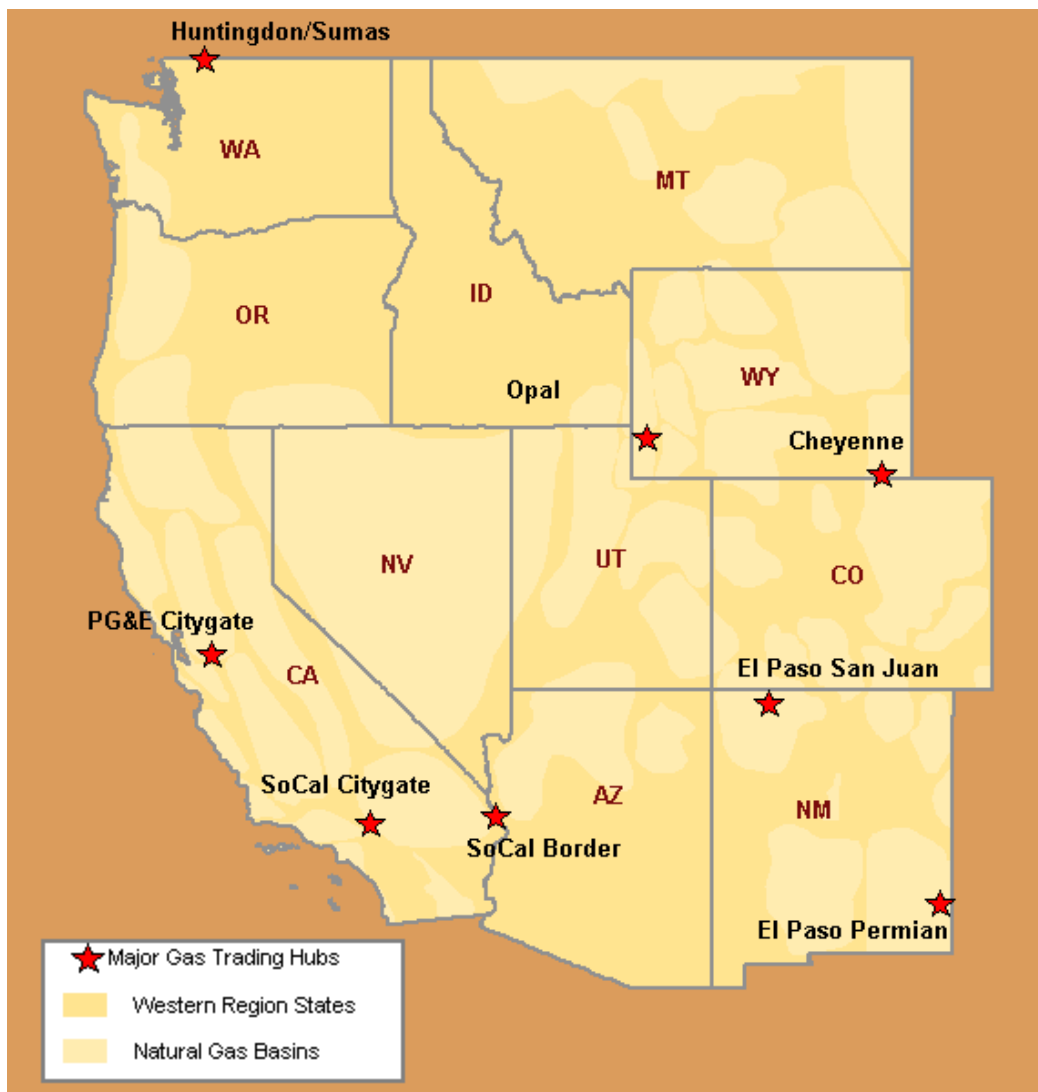


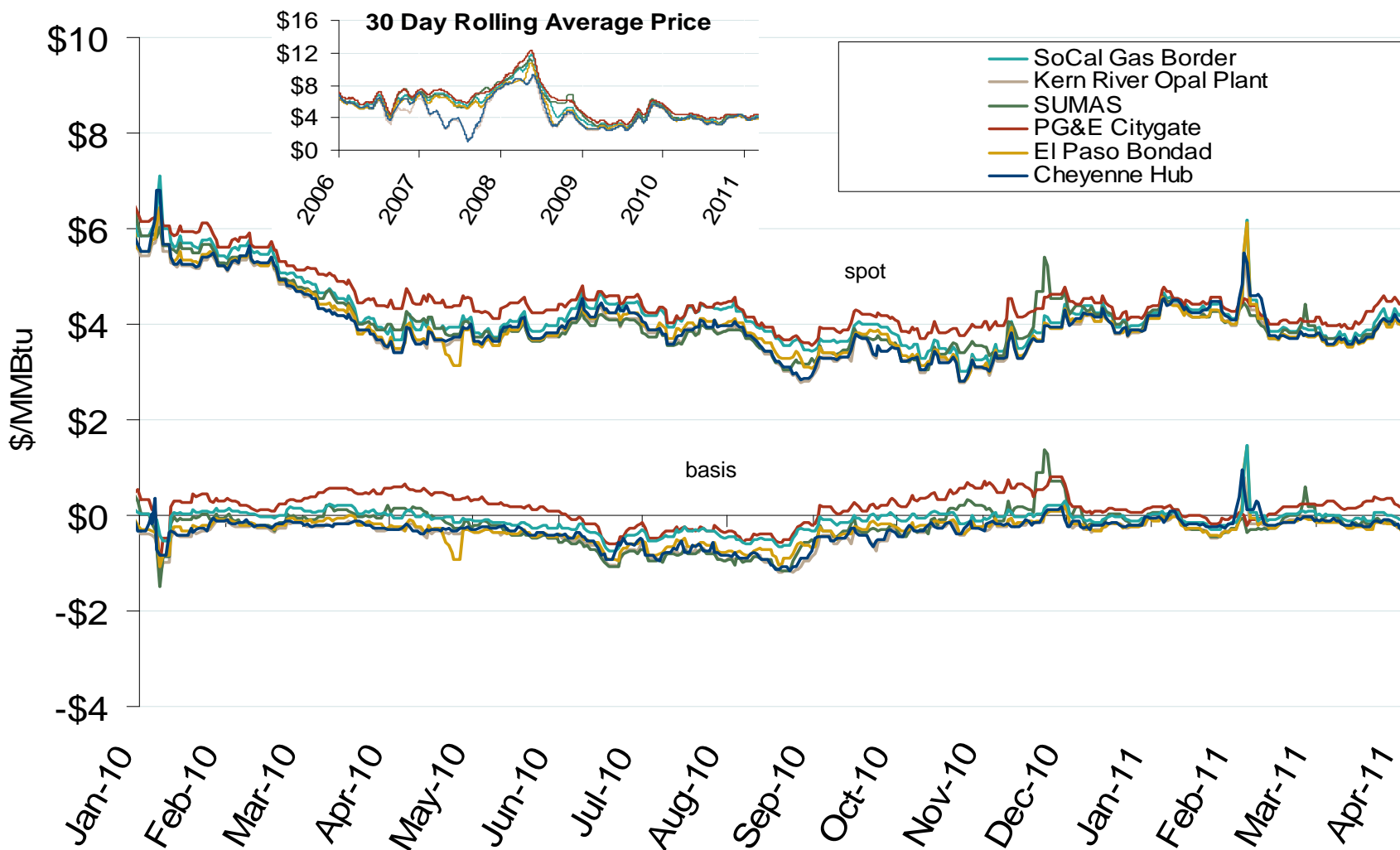
Western Natural Gas Region



Annual Average Spot Hub Prices

Annual Average Day Ahead Prices (\$/MMBtu)						
	2006	2007	2008	2009	2010	5-Year Avg
Socal Border	\$6.09	\$6.41	\$7.80	\$3.61	\$4.25	\$5.63
PG&E Citygate	\$6.47	\$6.89	\$8.59	\$4.13	\$4.53	\$6.12
Opal	\$5.38	\$4.07	\$6.48	\$3.13	\$3.94	\$4.60
Sumas (Huntington)	\$6.01	\$6.49	\$8.14	\$3.76	\$4.10	\$5.70
El Paso Bondad	\$5.73	\$6.02	\$6.99	\$3.28	\$4.02	\$5.21
El Paso San Juan	\$5.76	\$6.06	\$7.16	\$3.33	\$4.07	\$5.28
Malin	\$6.11	\$6.48	\$8.17	\$3.76	\$4.21	\$5.75

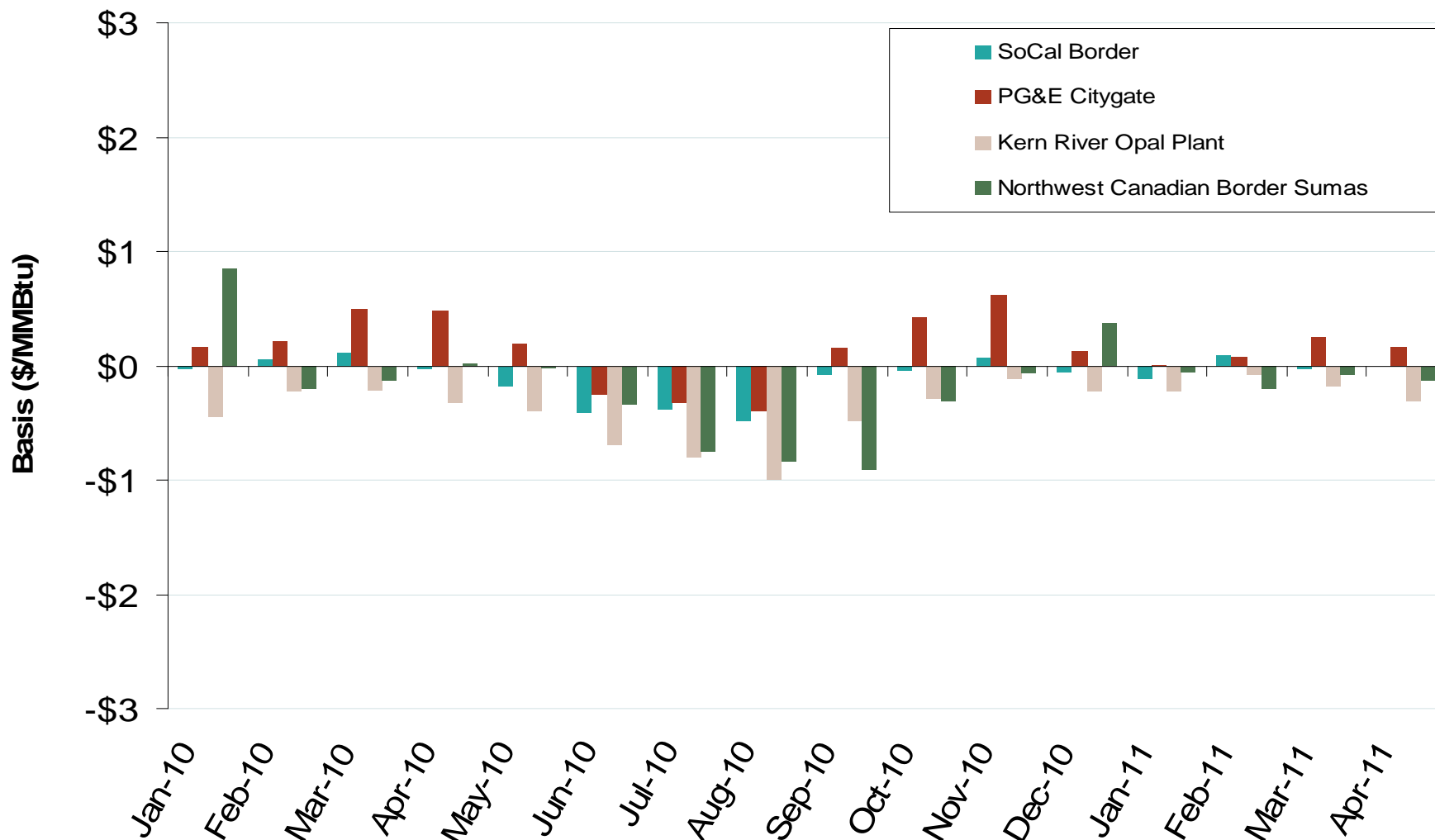
Western Day-Ahead Hub Spot Prices and Basis



Source: Derived from *Platts* data.

Updated May 6, 2011

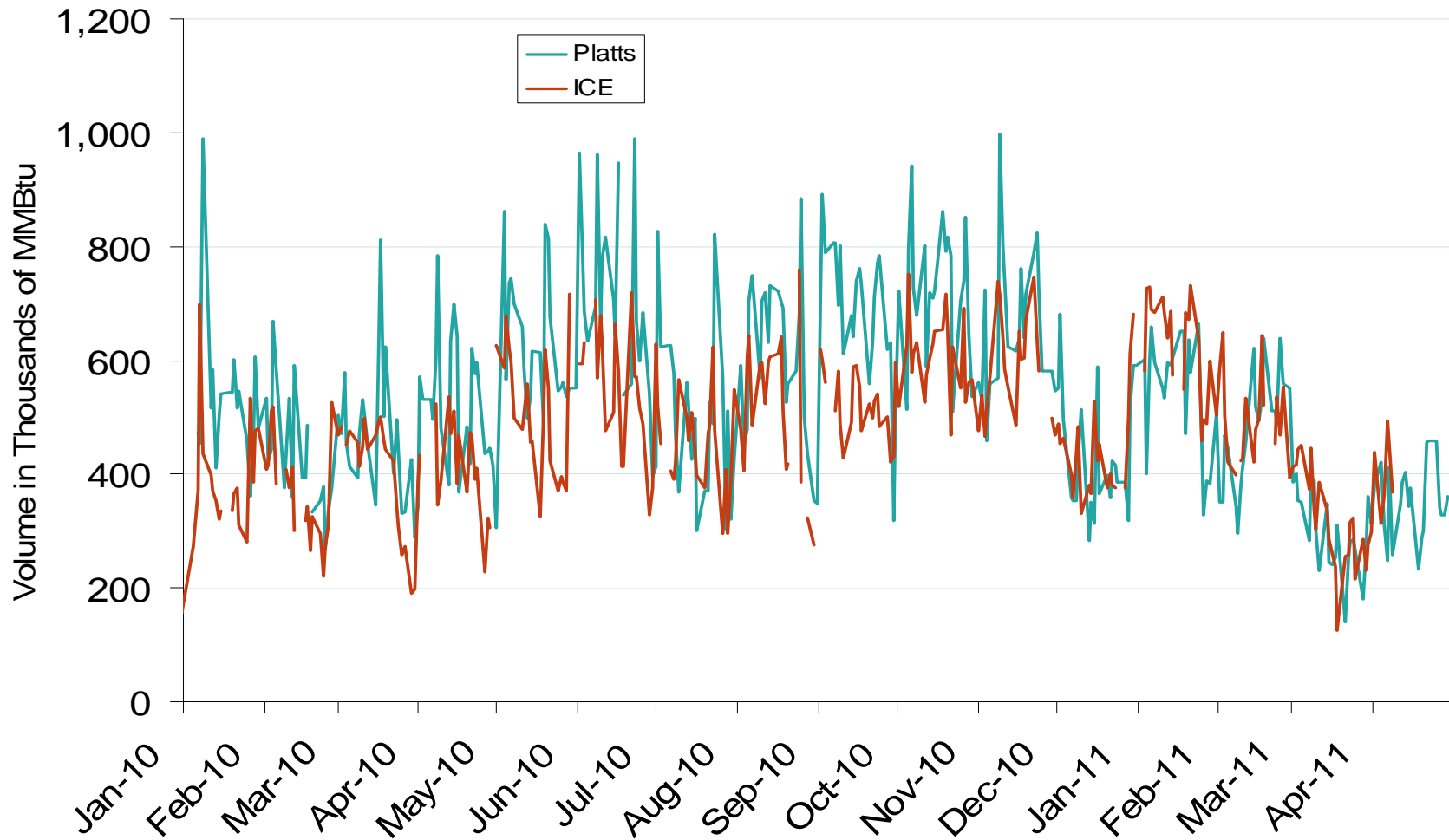
Western Monthly Average Basis Value to Henry Hub



Source: Derived from *Platts* data.
May 2011

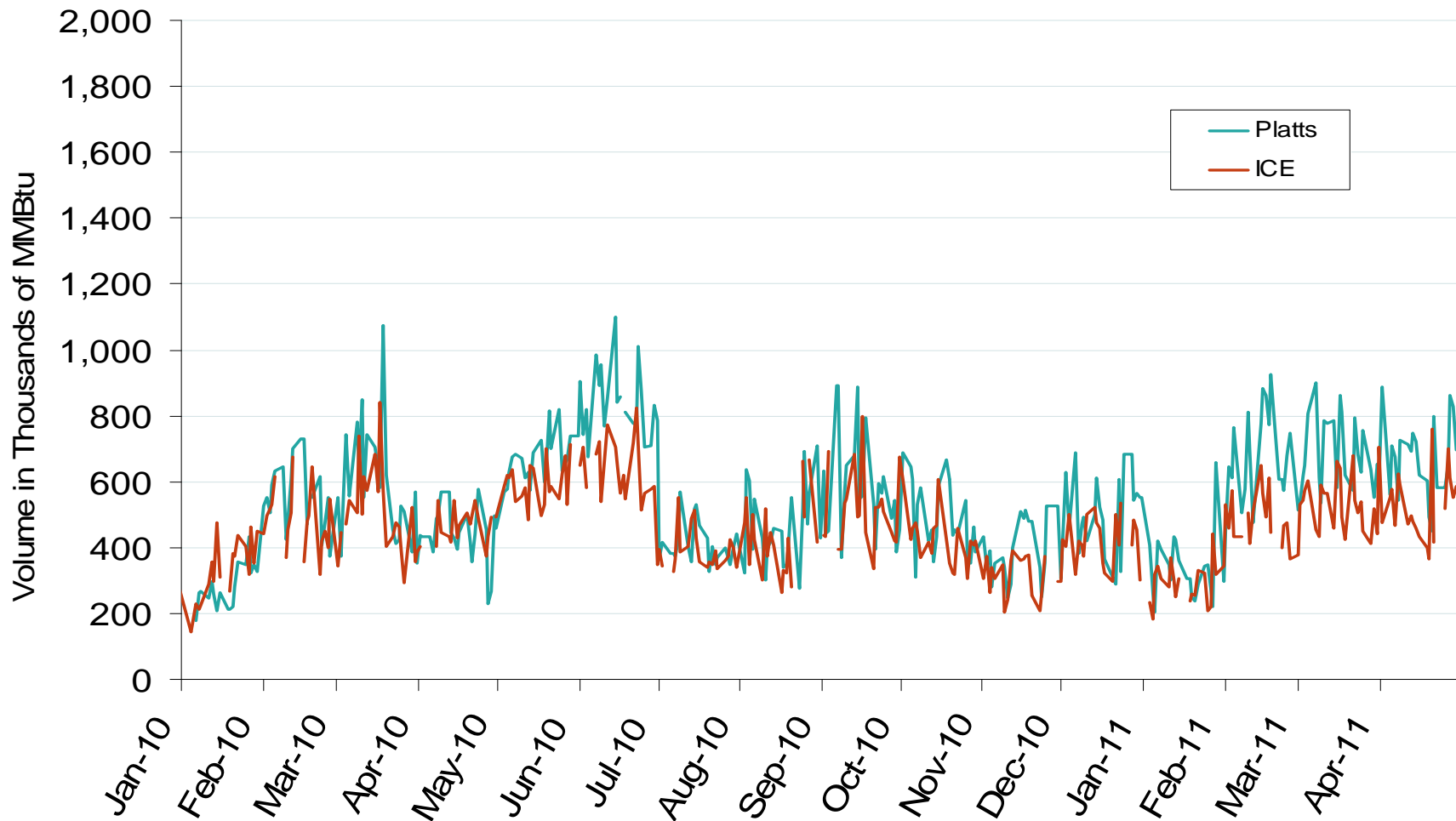
Updated May 6, 2011

Published and Traded Daily Spot Volumes at Kern River



Source: Derived from *Platts* and *ICE* data.

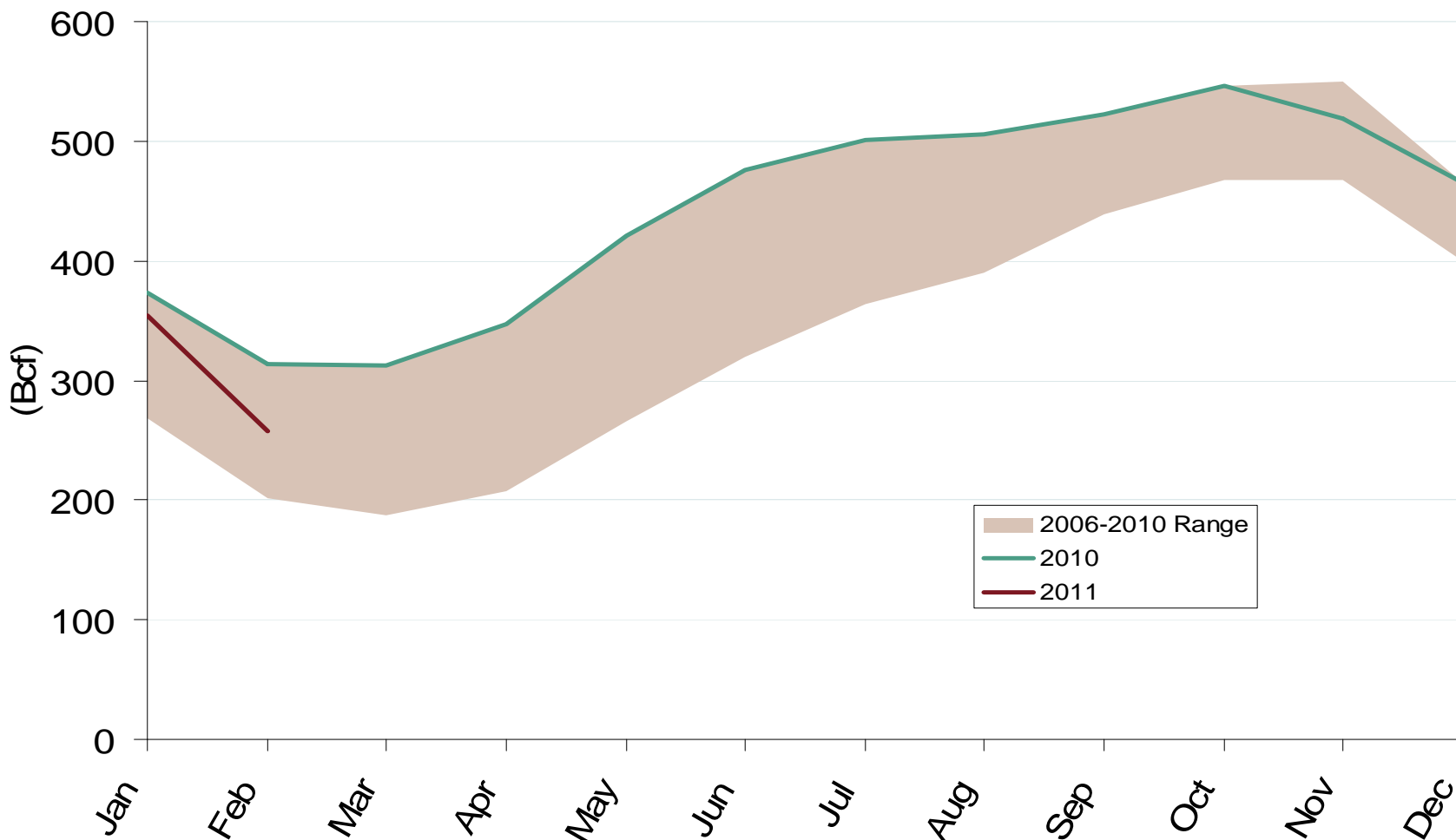
Published and Traded Daily Spot Volumes at Socal Border



Source: Derived from *Platts* and *ICE* data.

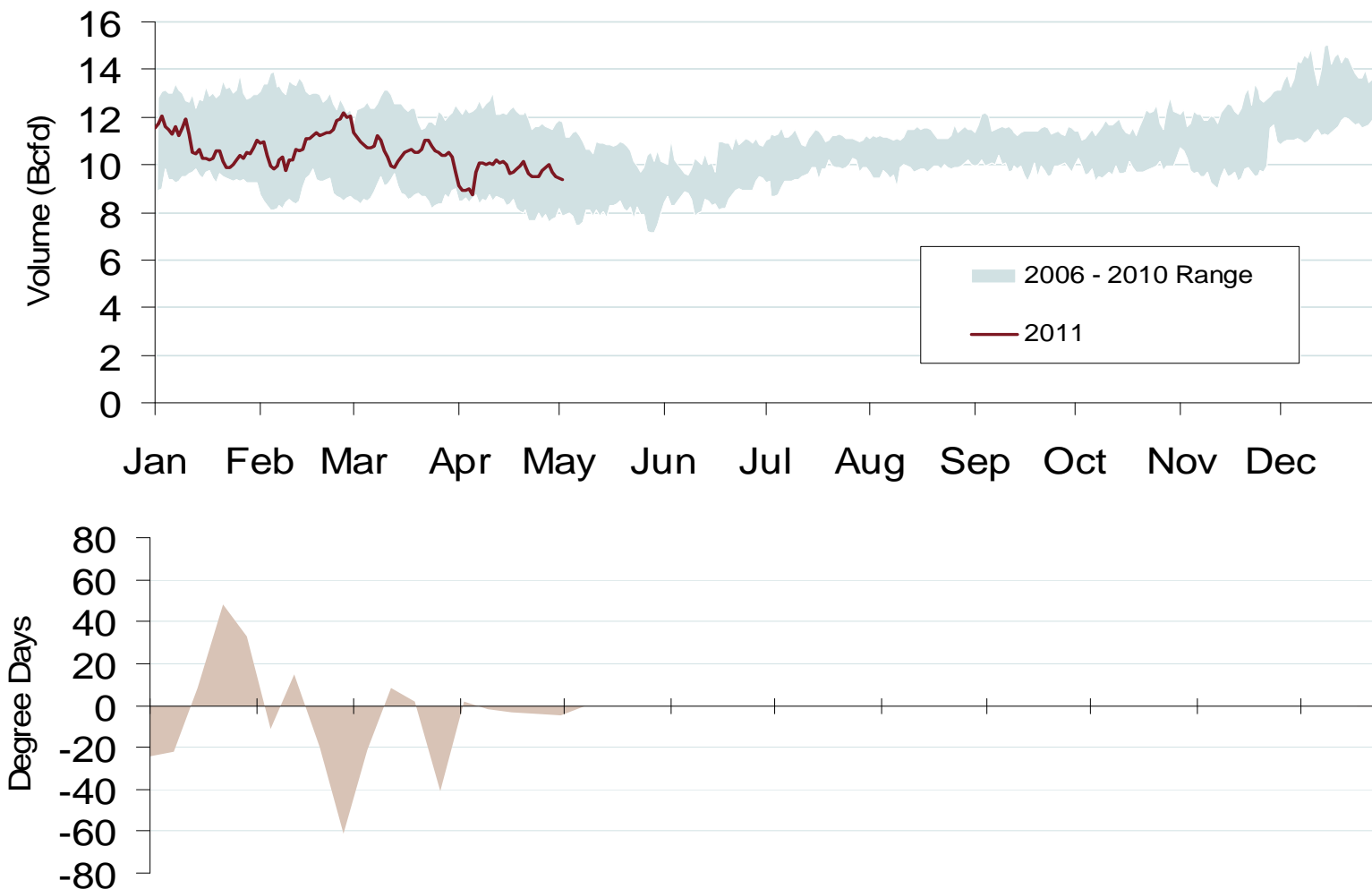
Updated May 6, 2011

Western Region Underground Working NG In Storage



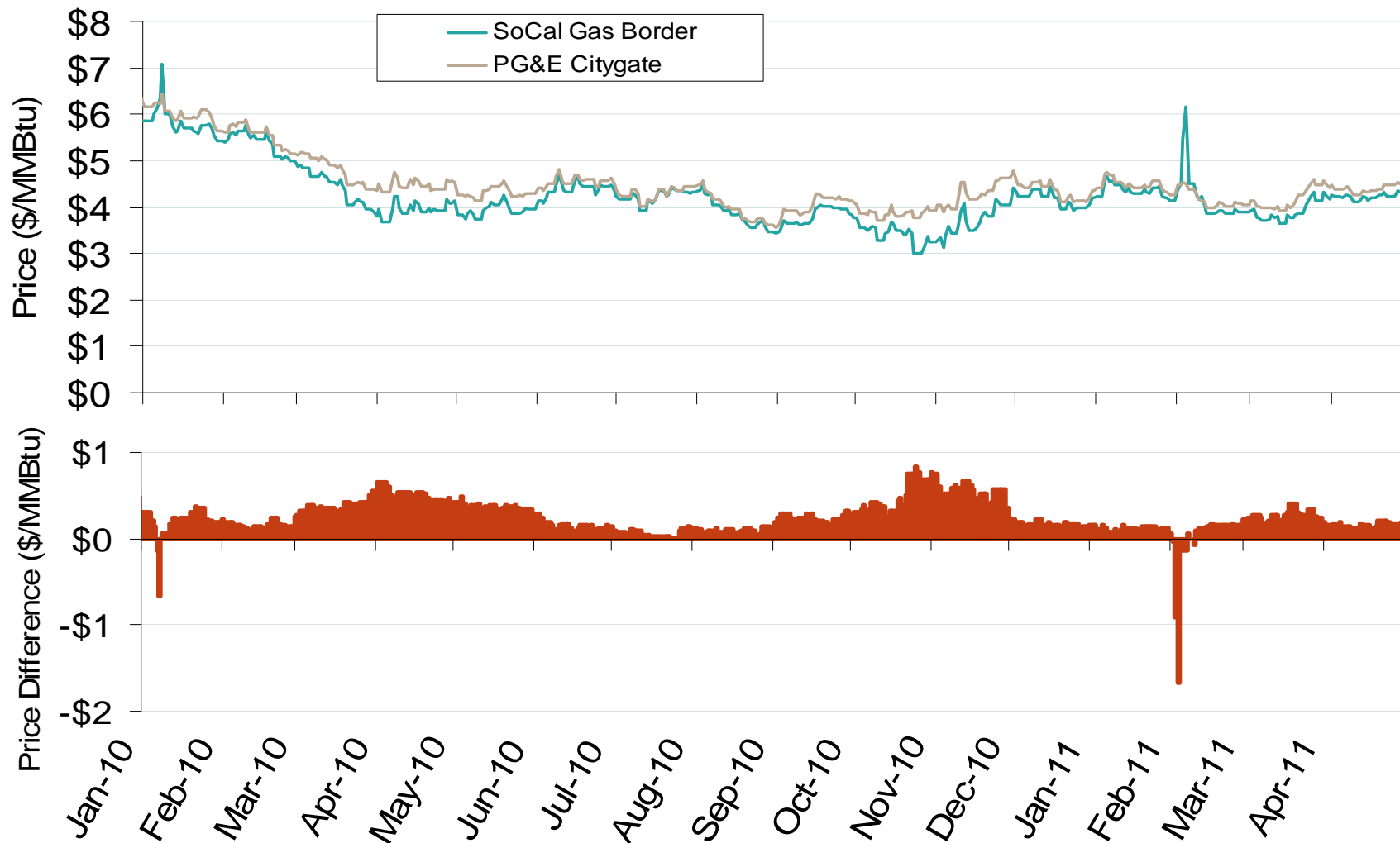
Source: Derived from EIA data.

Daily Western Natural Gas Demand - All Sectors



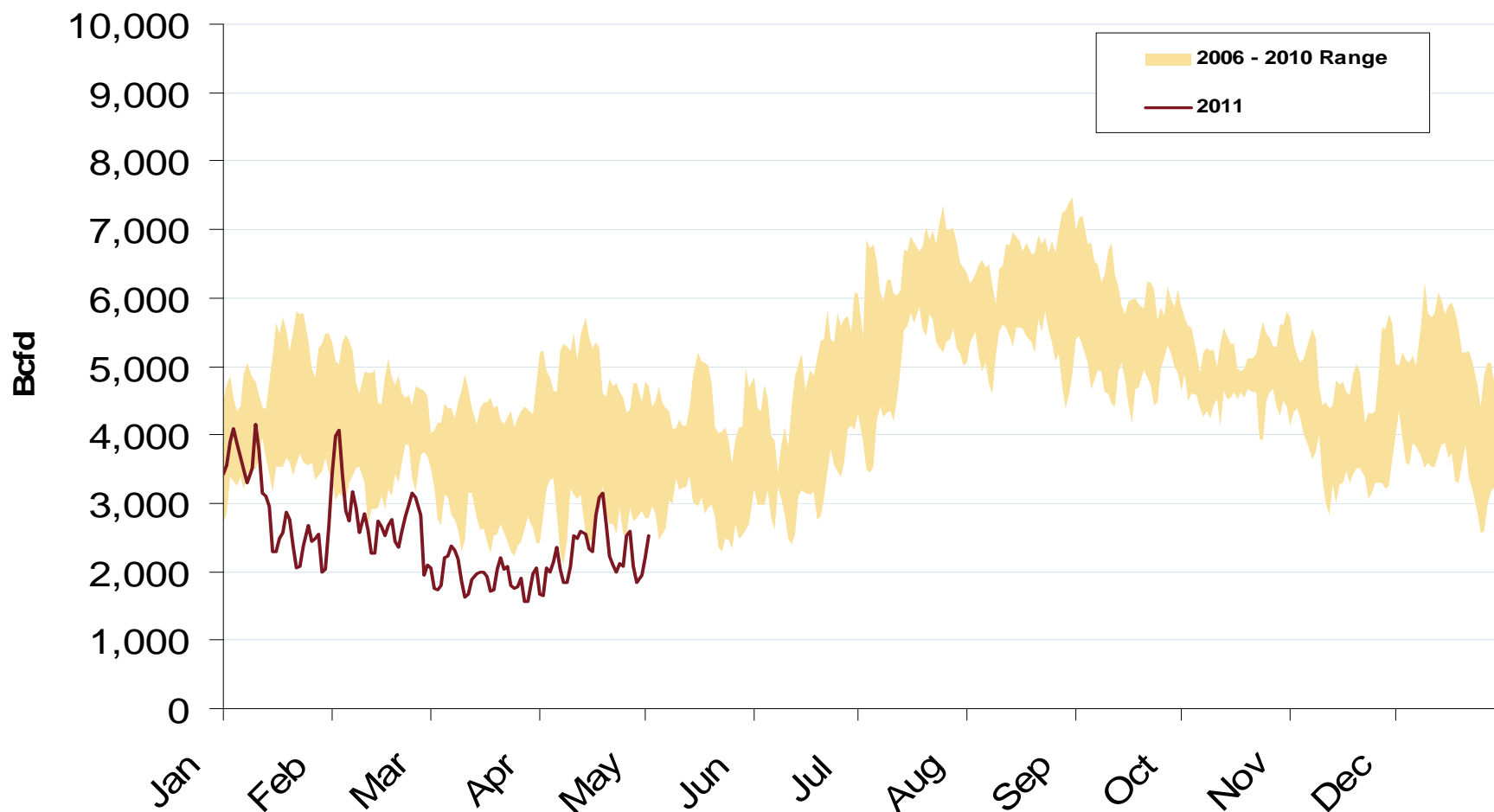
Source: Derived from *Bentek Energy* and *Weekly NOAA* data.

Difference in Northern and Southern California Daily Spot Prices



Source: Derived from *Platts* data.

Western Natural Gas Consumption for Power Generation



Source: Derived from *Bentek Energy* data.