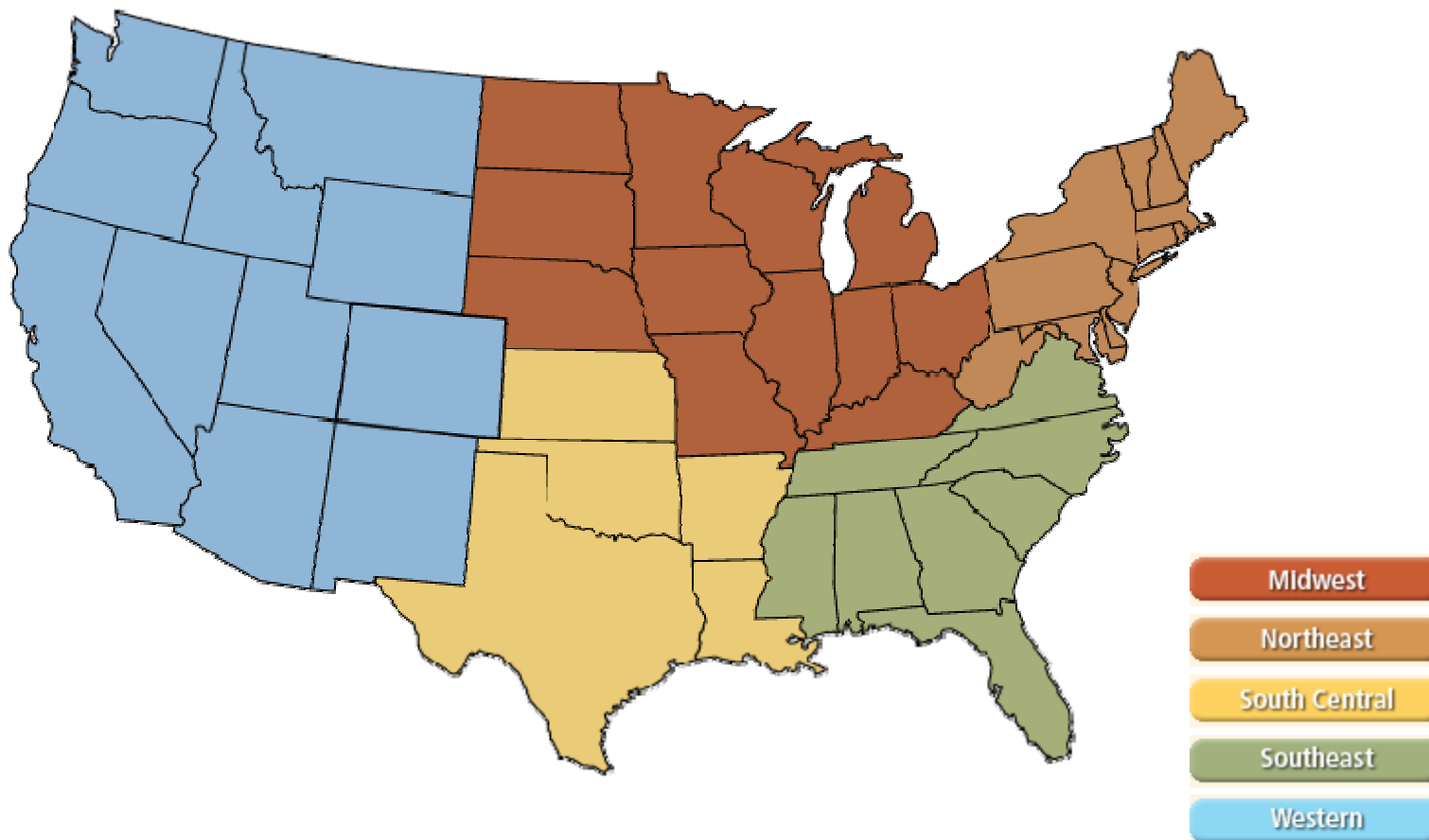
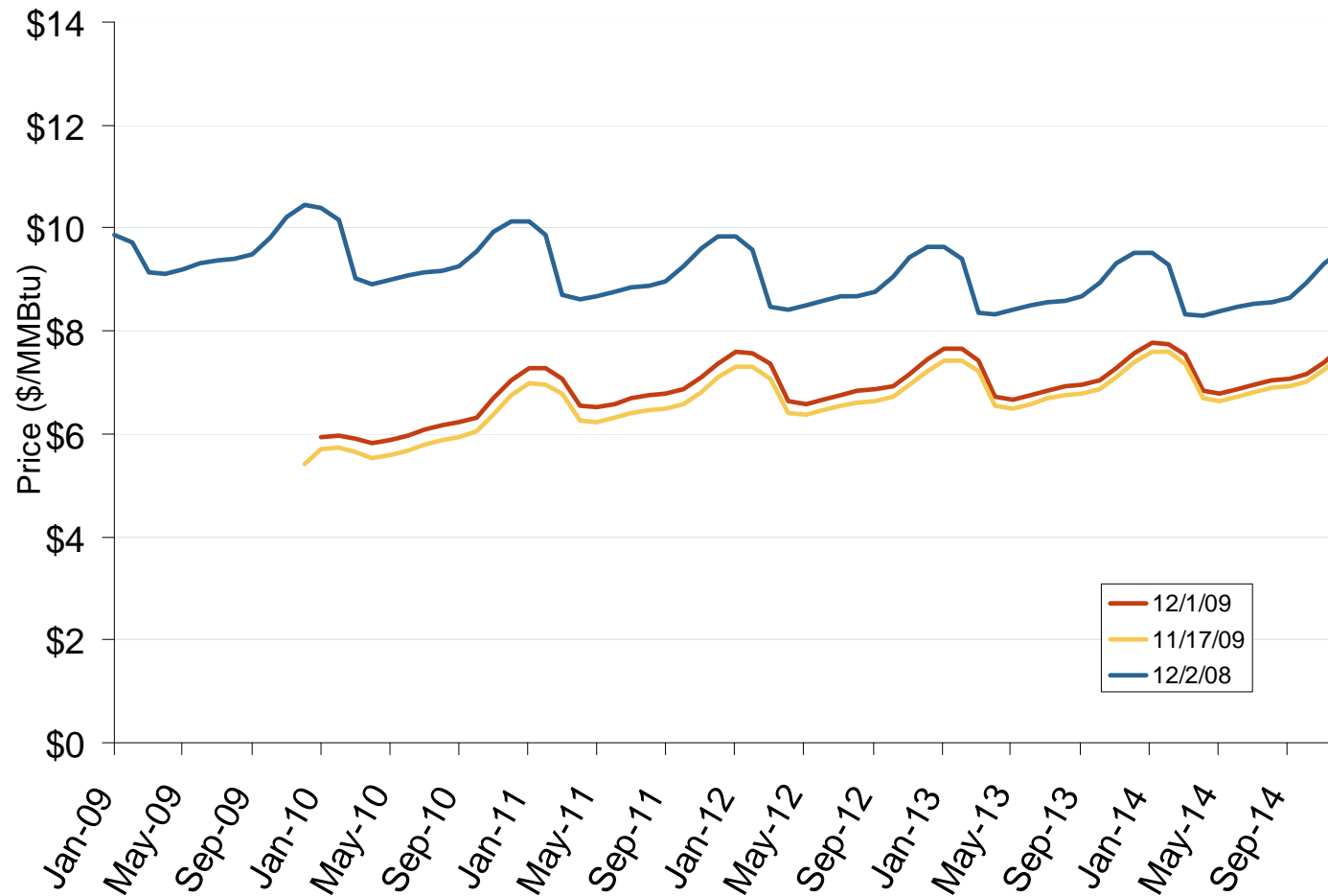


Natural Gas Futures Trading Markets

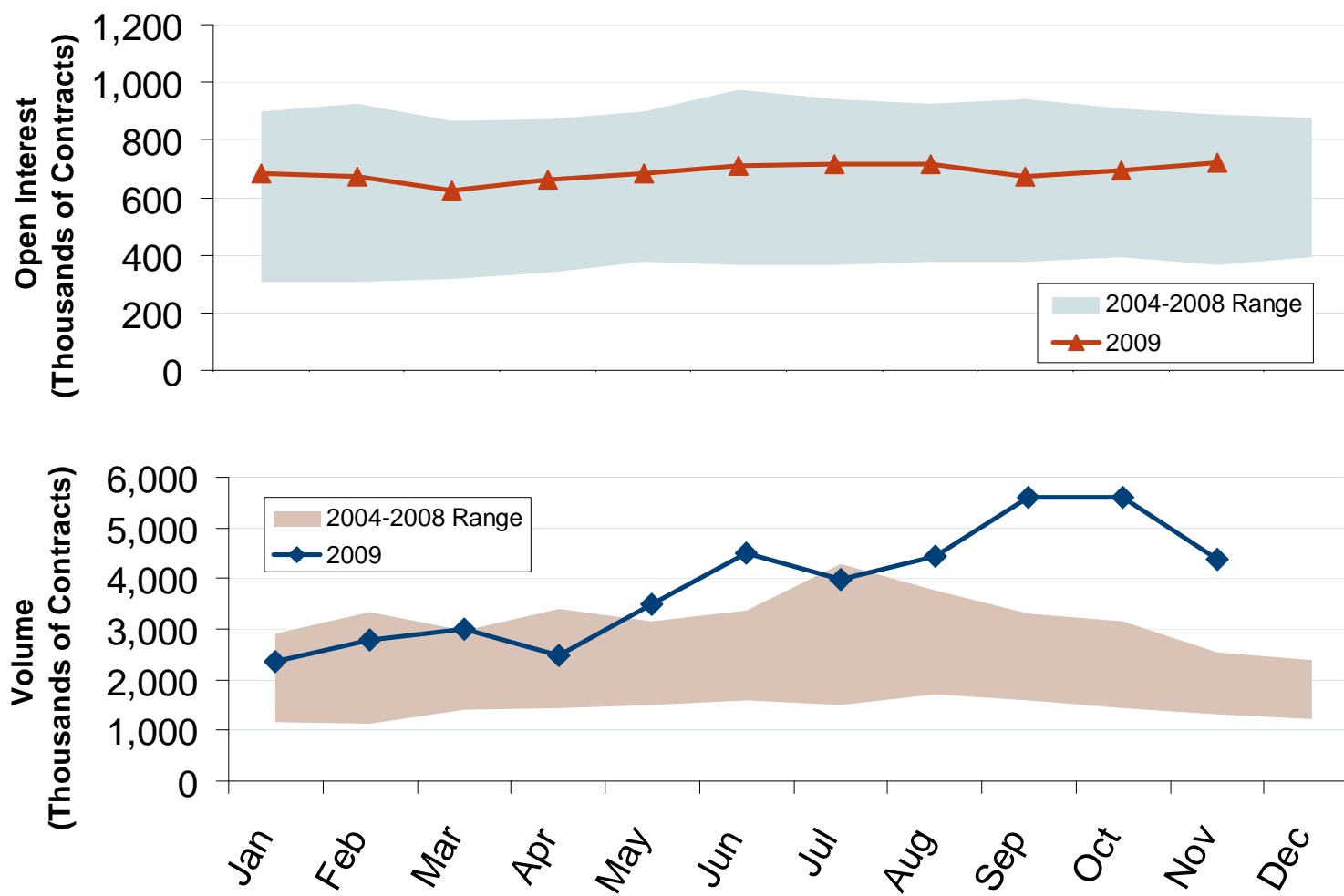


NYMEX Natural Gas Forward Price Curve



The NYMEX futures contract trades in 10,000 million Btu units. The blue series shows the forward price curve for these contracts 1-year ago. The red and yellow curves show prices for contracts traded on the current and previous months.

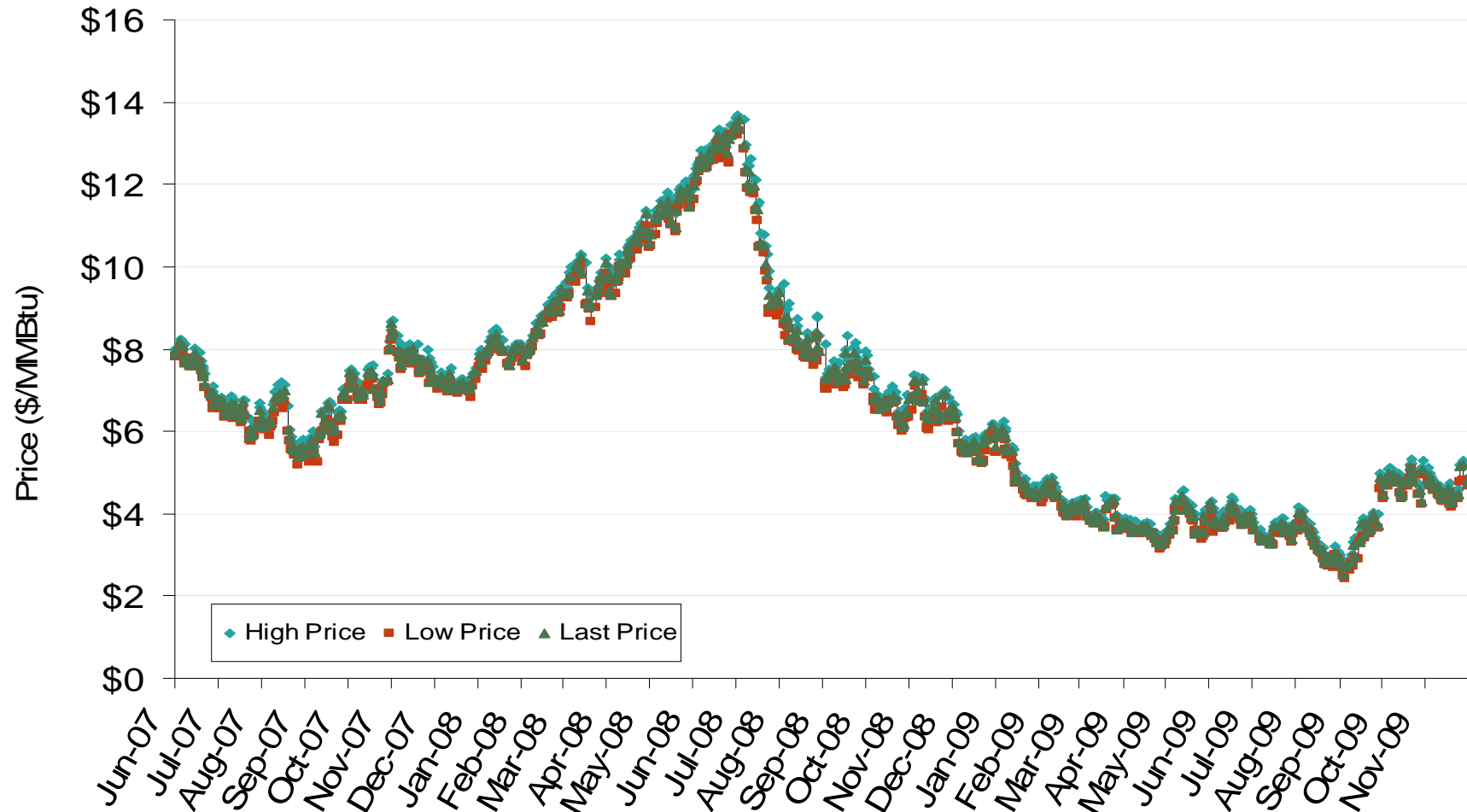
NYMEX Natural Gas Futures Month-End Open Interest and Total Monthly Volume



Source: Derived from NYMEX data.

Updated December 8, 2009 2010

NYMEX Natural Gas Futures Prompt Month Daily Settlement Price and Price Range

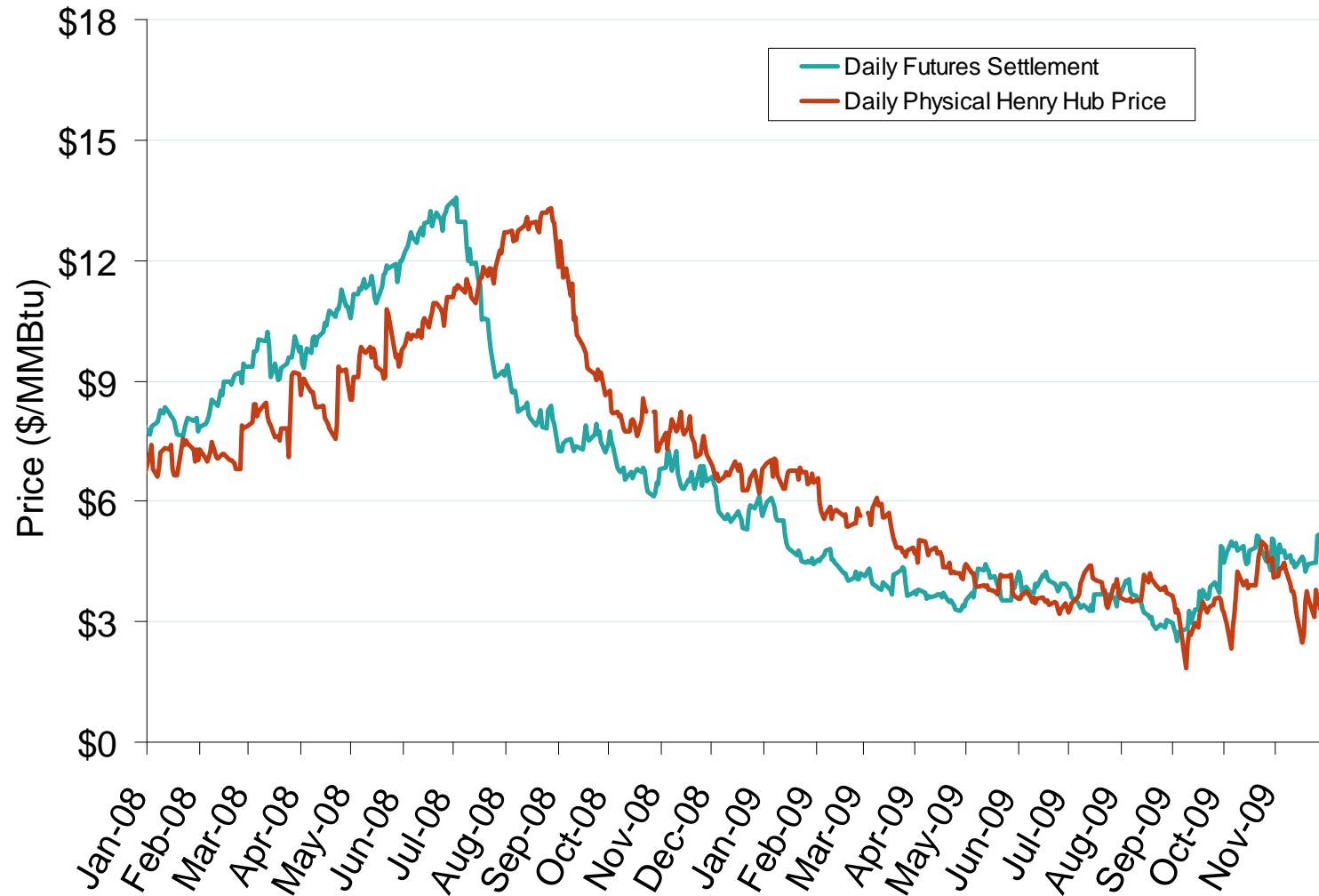


Source: Derived from NYMEX data.

Updated December 8, 2009

2086

Daily Physical Index Price and Daily Futures Settlement Price

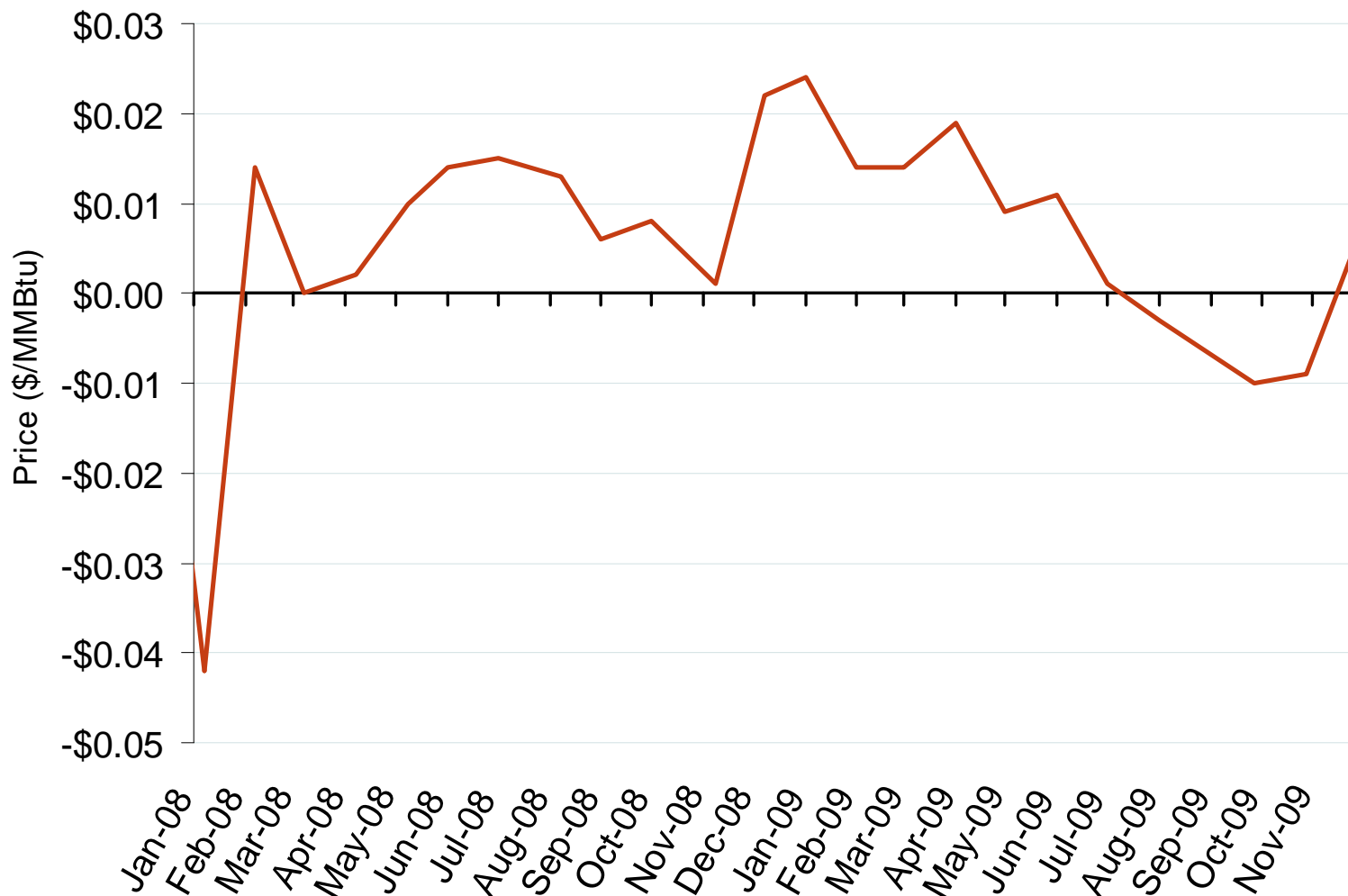


Source: Derived from *Platts* and *Bloomberg* data.

Updated December 8, 2009

2087

Deviation Between Monthly Physical Index and Monthly Futures Expiration Price at Henry Hub

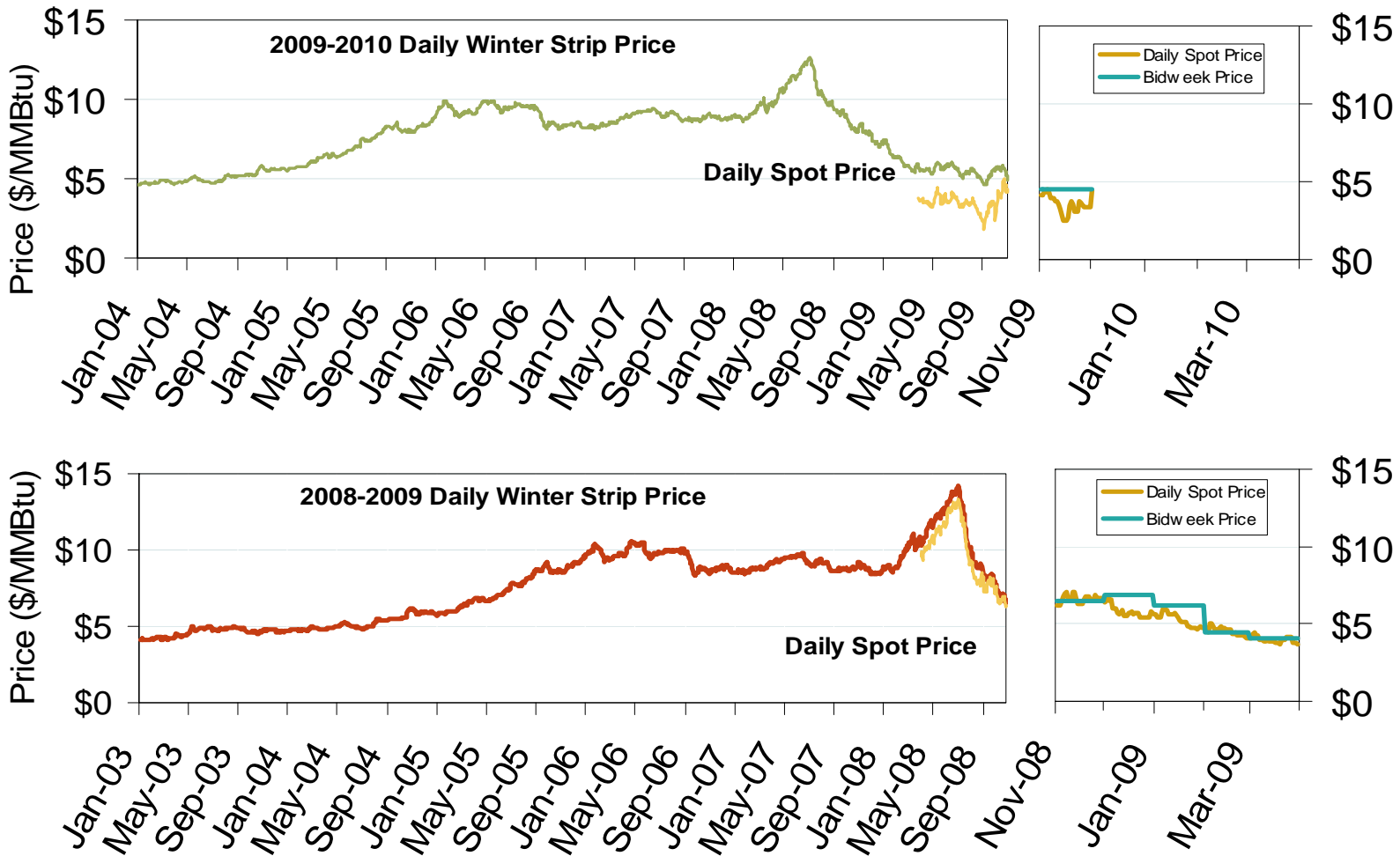


Source: Derived from *Platts* and *Bloomberg* data.

Updated December 8, 2009

2088

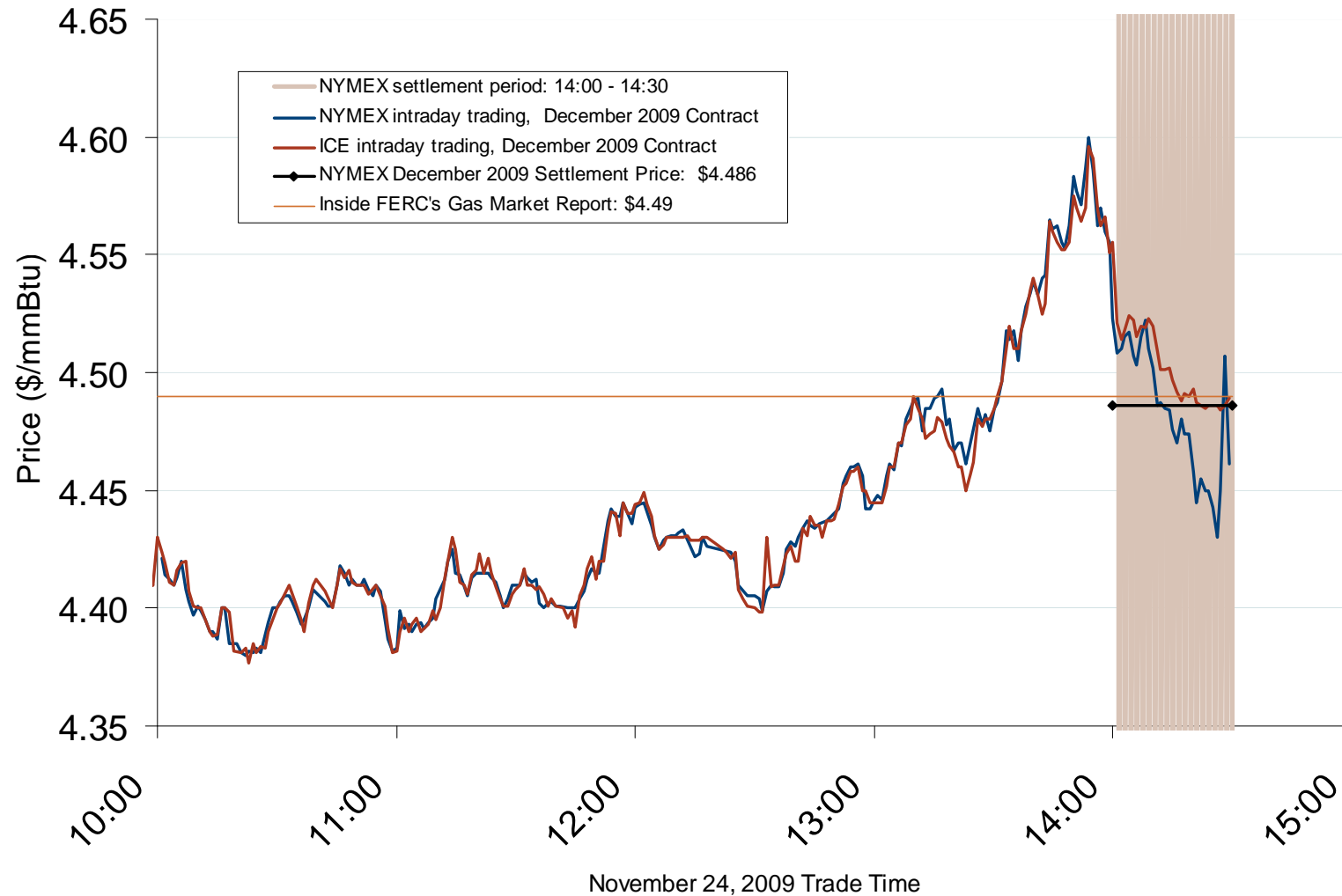
Natural Gas Winter Futures Strip and Daily Henry Hub Spot and Bidweek Prices



Source: Derived from *Platts* and *Nymex* data.

Updated December 8, 2009

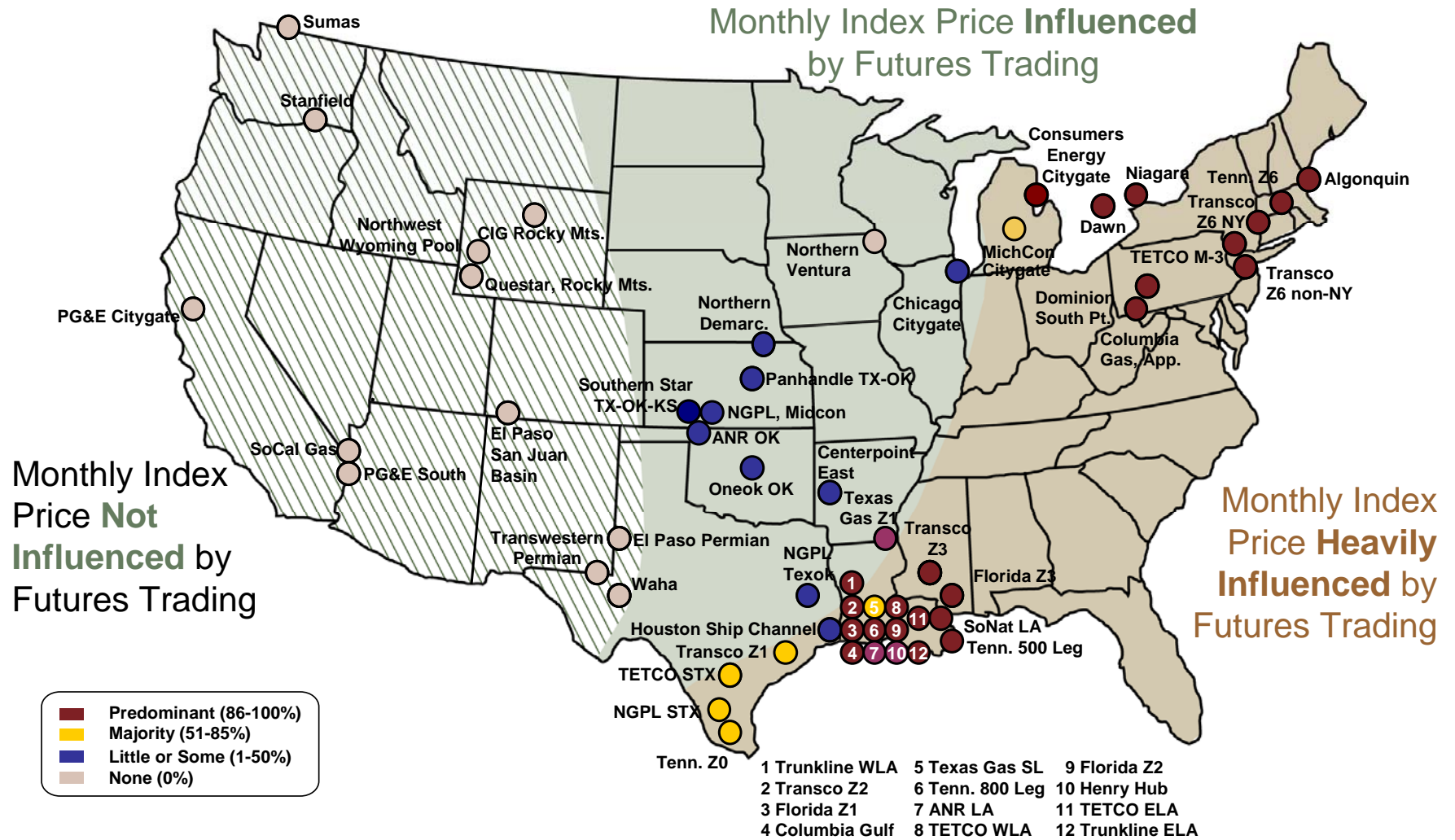
December 2009 NYMEX and ICE Contract Final Settlement Day

Source: Derived from *Nymex and ICE* data.

Updated November 24, 2009

2166

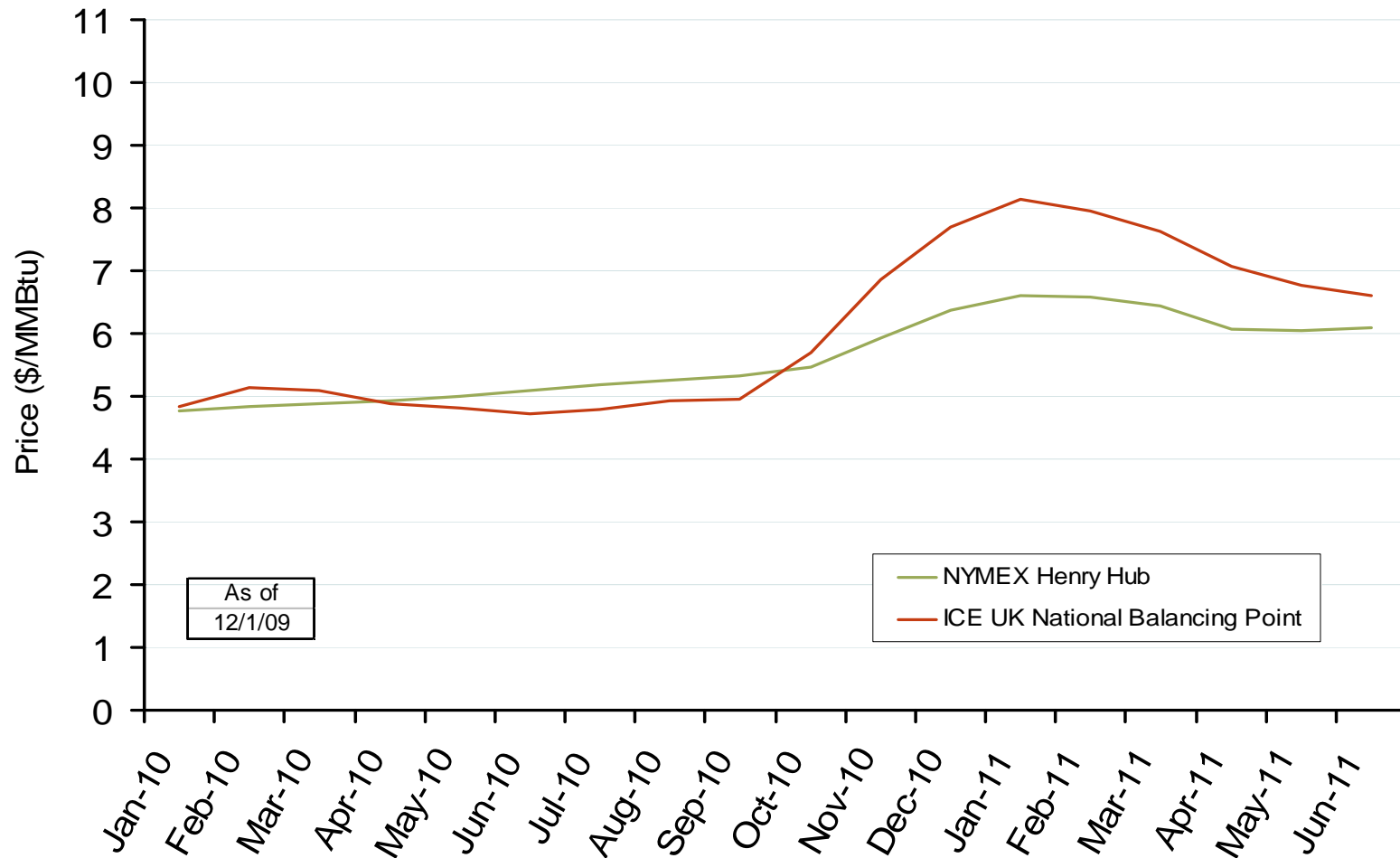
Use of Physical Basis in Natural Gas Price Indices at Major Trading Points, 2009



Source: Derived from *Platts* data for January through June 2009 indices.

Updated June 9, 2009

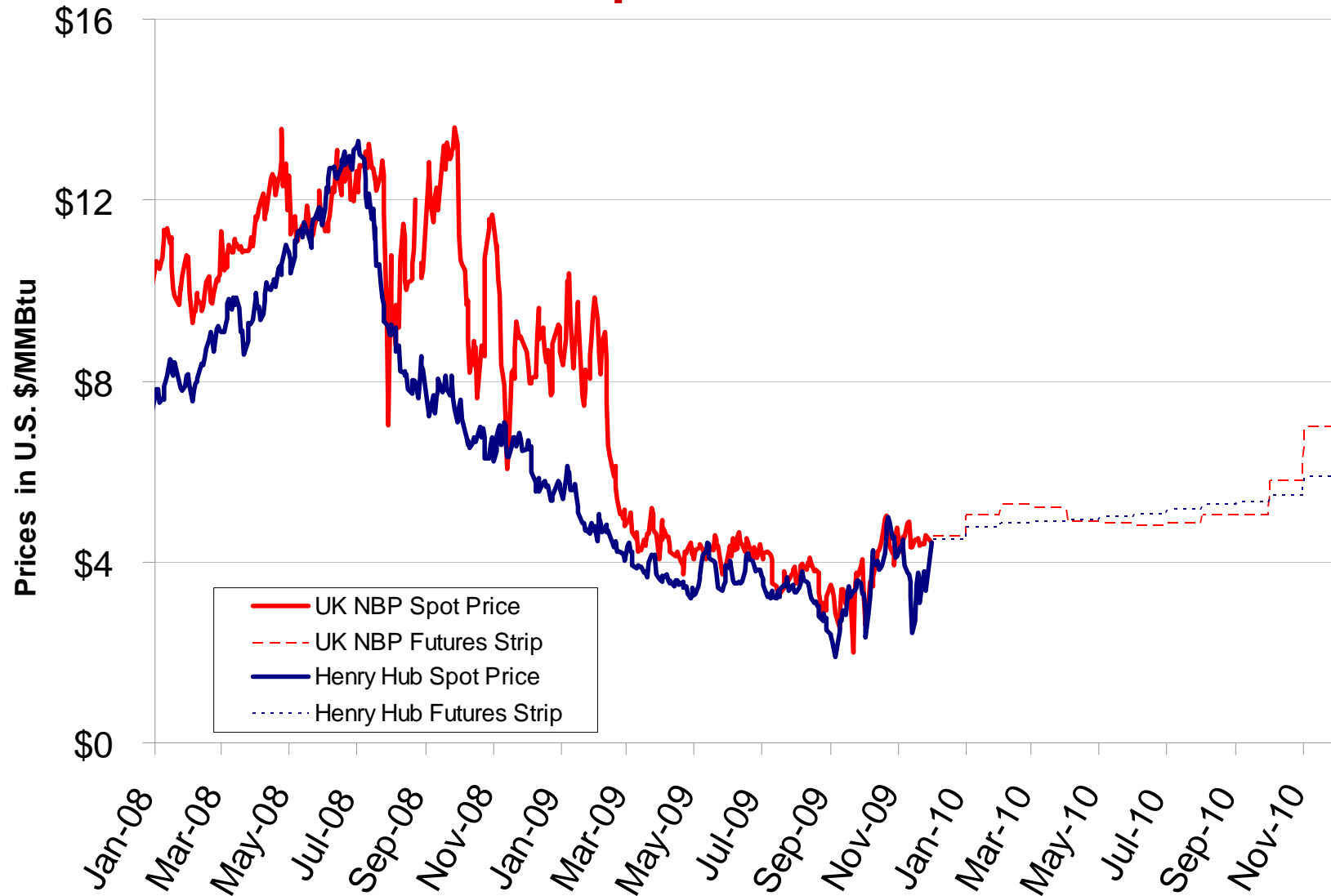
NYMEX Henry Hub and ICE UK National Balancing Point Natural Gas Forward Price Curves

Source: Derived from *NYMEX* and *ICE* data.

Updated December 8, 2009

2170

US and UK Gas Spot and Futures Prices



Source: Derived from NYMEX and ICE data.

Updated December 8, 2009

2177