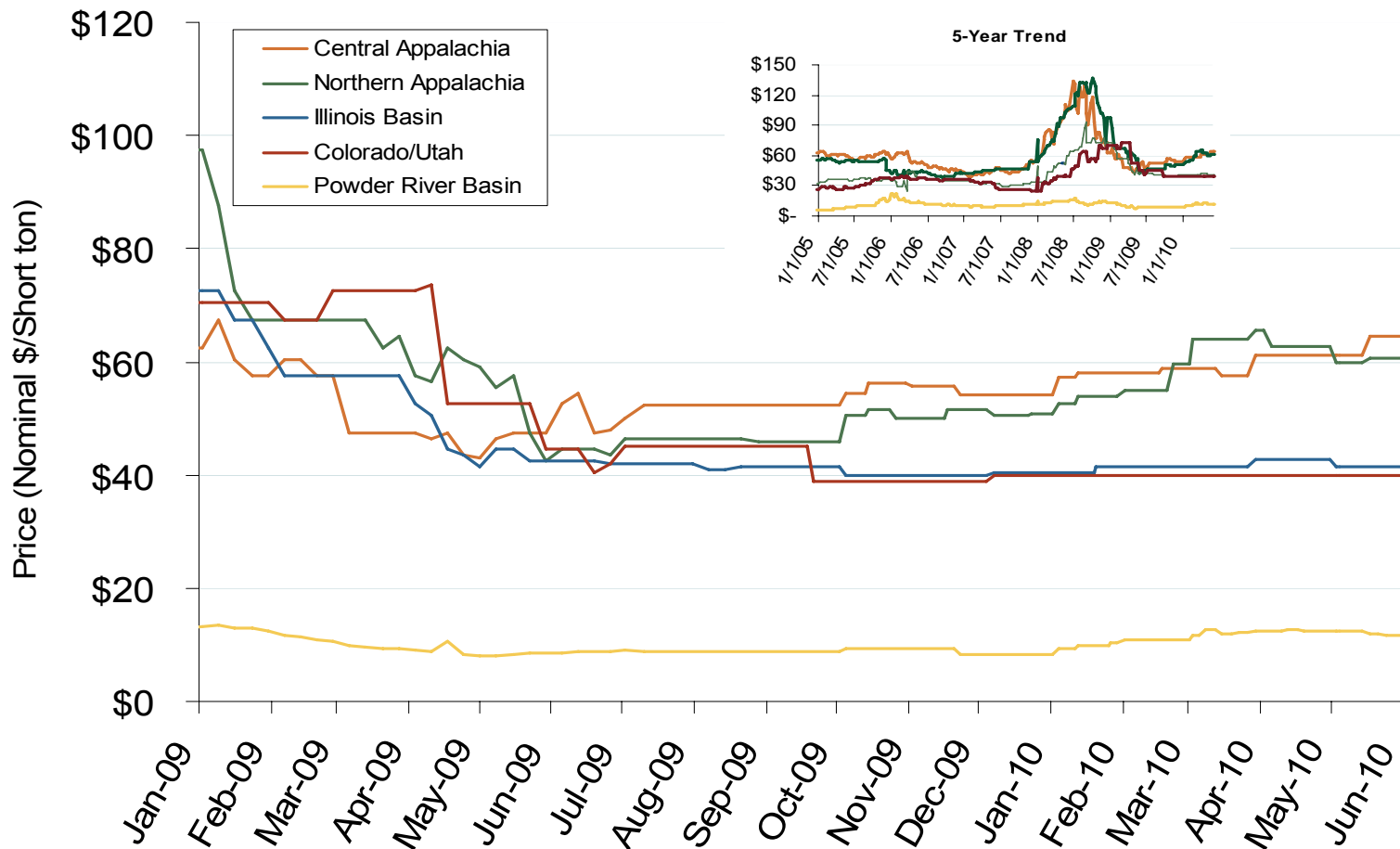


## Regional Coal Spot Prices

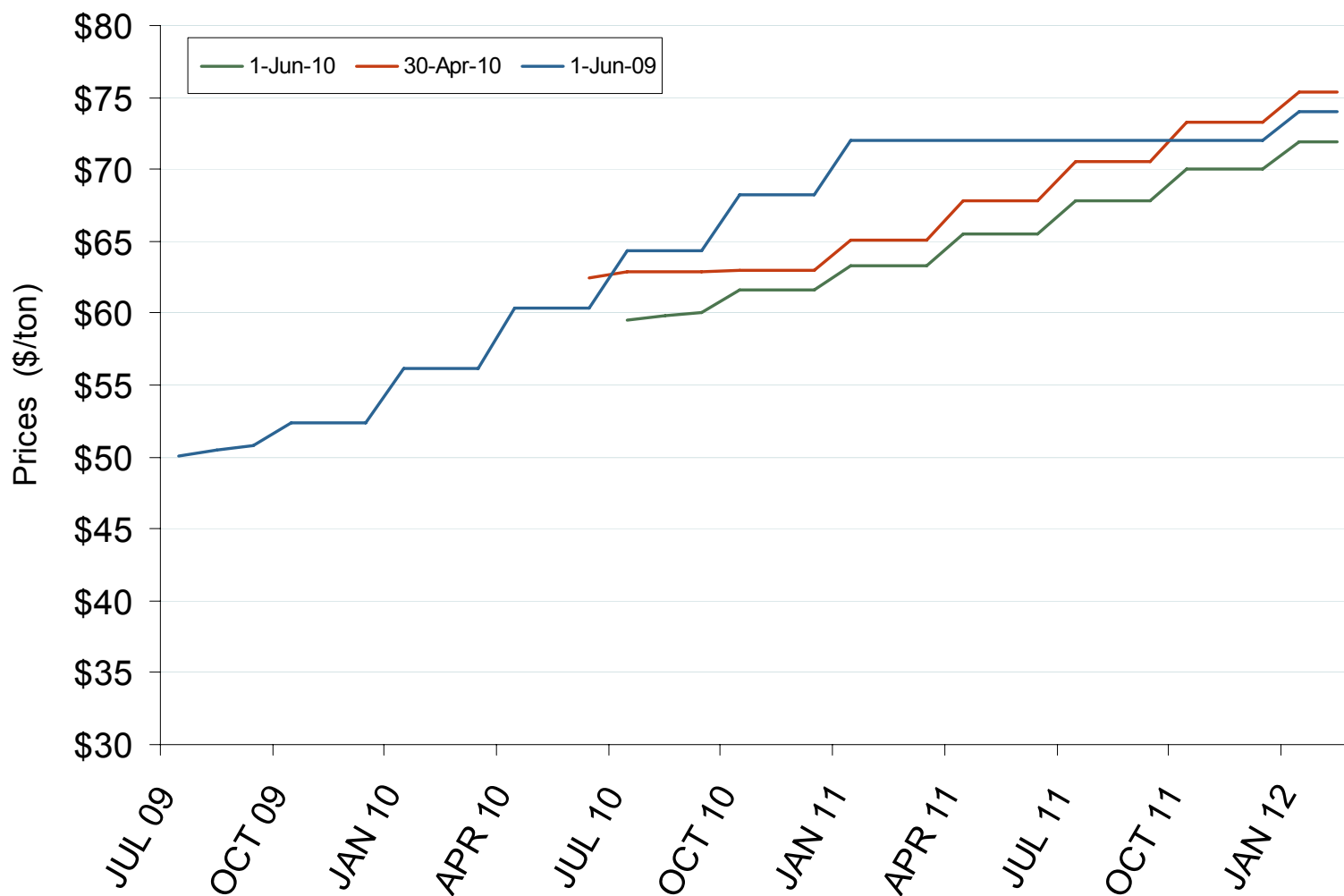


Note: the Central Appalachian (CAPP) coal is priced at Big Sandy. All others are mine mouth prices. Prices do not include transportation costs to a plant, as those can vary widely by contract specifications. Prices exclude incremental cost of emissions allowances.

Source: Derived from *Bloomberg* data.

Updated June 7, 2010

## Central Appalachian Coal Futures Prices

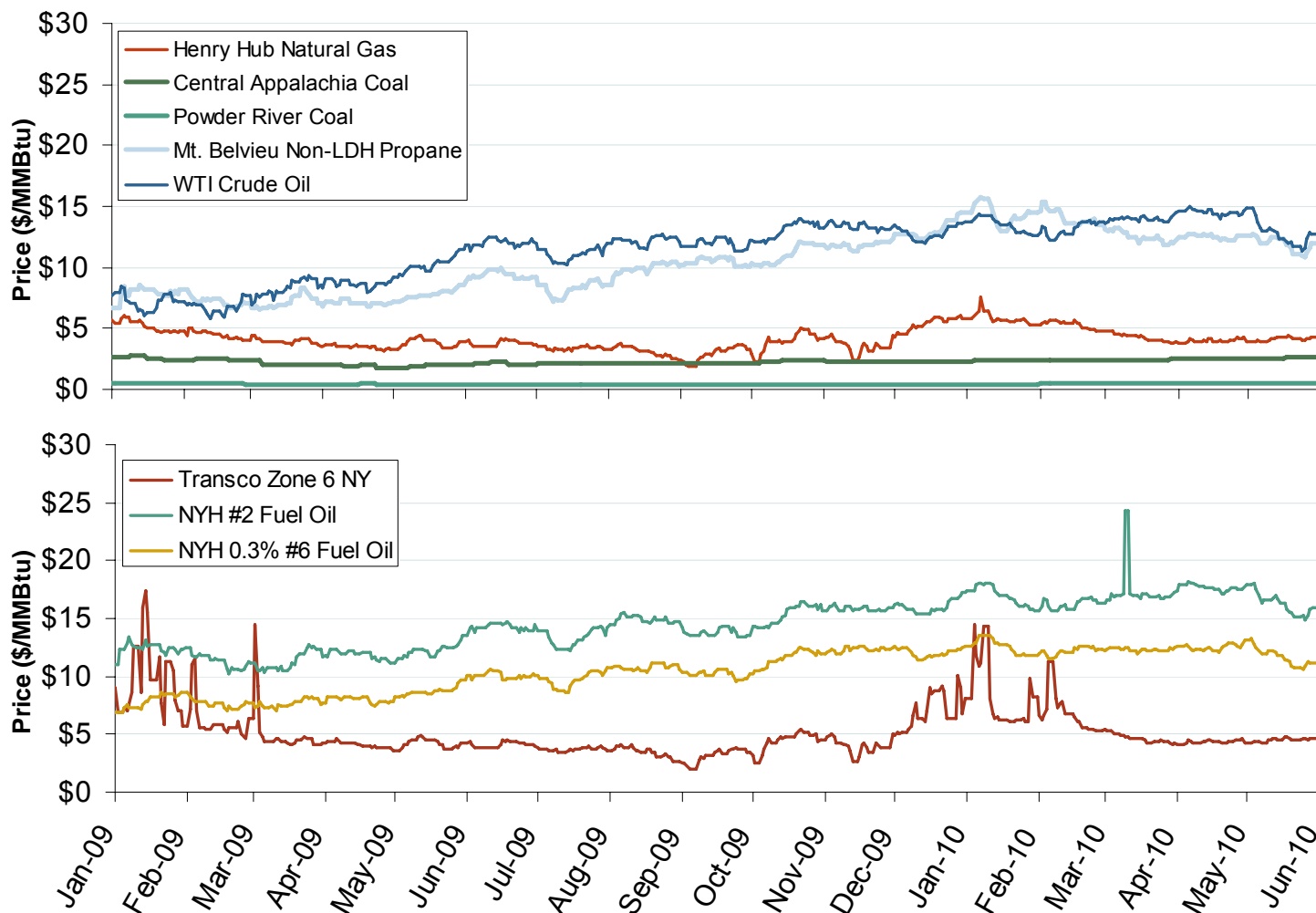


Source: Derived from Nymex data.

Updated May 7, 2010

3003

## Oil, Coal, Natural Gas and Propane Daily Spot Prices



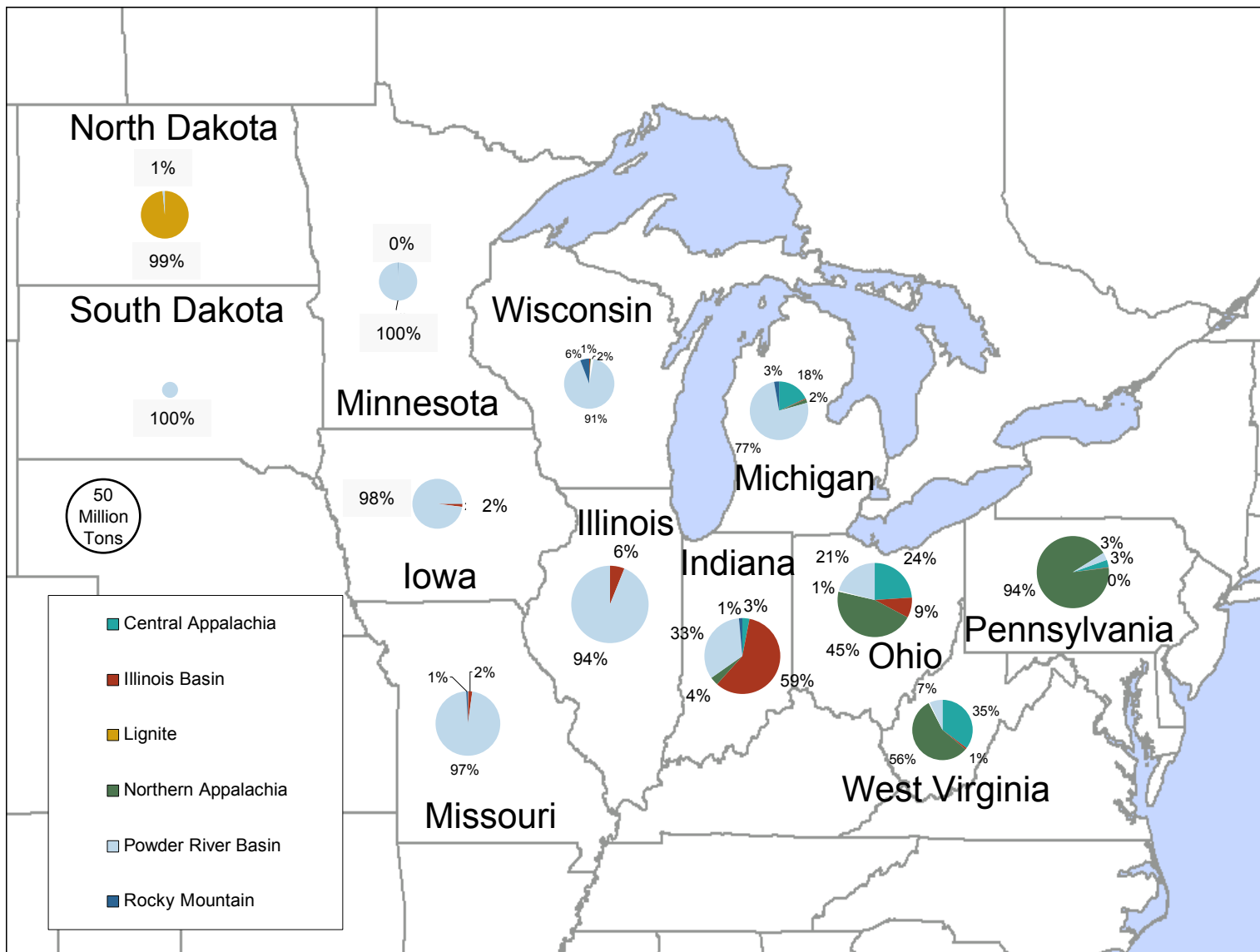
Source: Derived from ICE and Bloomberg data.

Note: Coal prices are quoted in \$/ton. Conversion factors to \$/MMBtu are based on contract specifications of 12,000 btus/pound for Central Appalachian coal and 8800 btus/pound for Powder River Basin coal.

Updated June 7, 2010

3010

# 2008 Coal Shipment Origins by Supply Basin

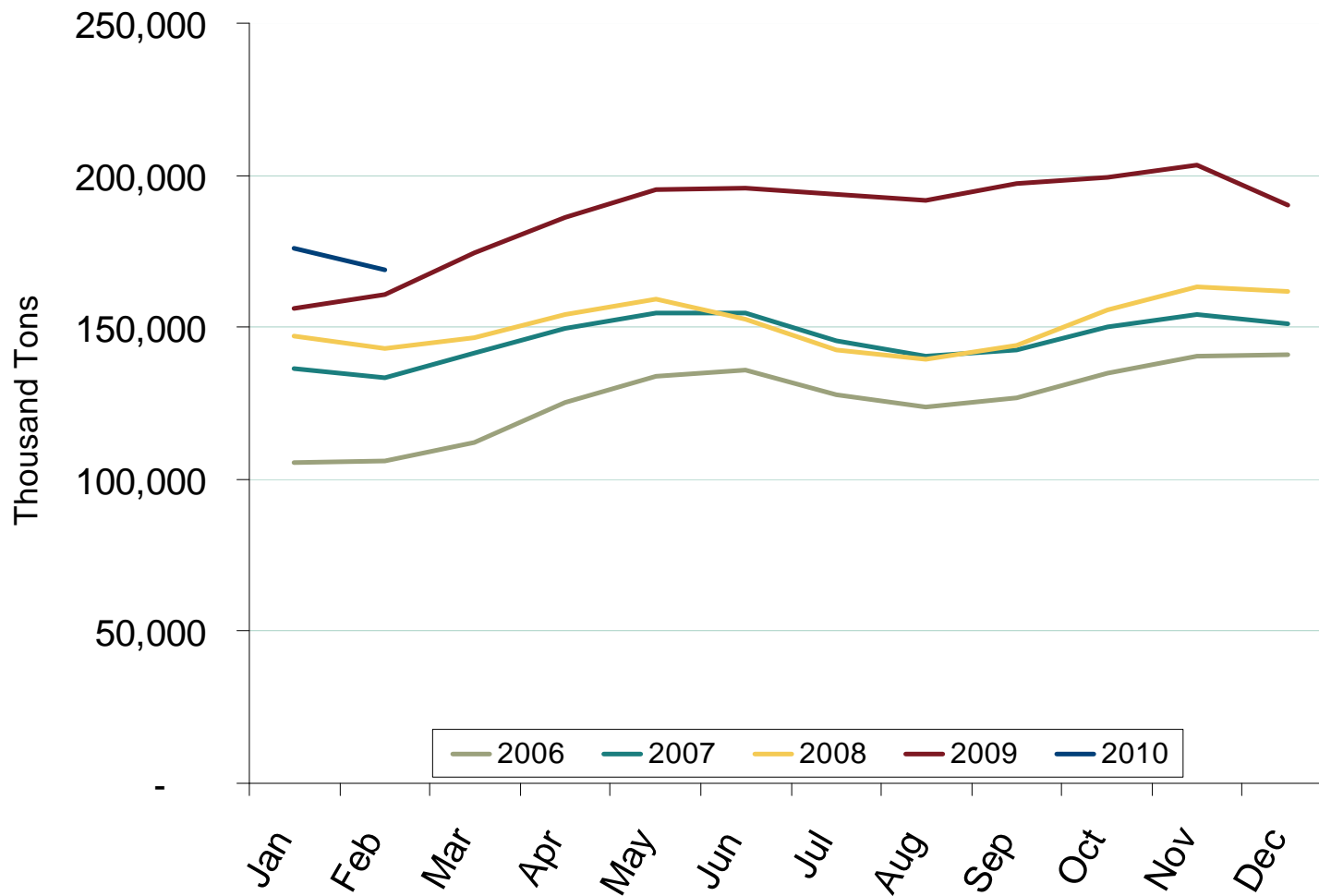


Source: Derived from FERC and EIA data.

Updated March 23, 2009

3021

## U.S. Coal Stockpiles at Electric Power Generating Facilities

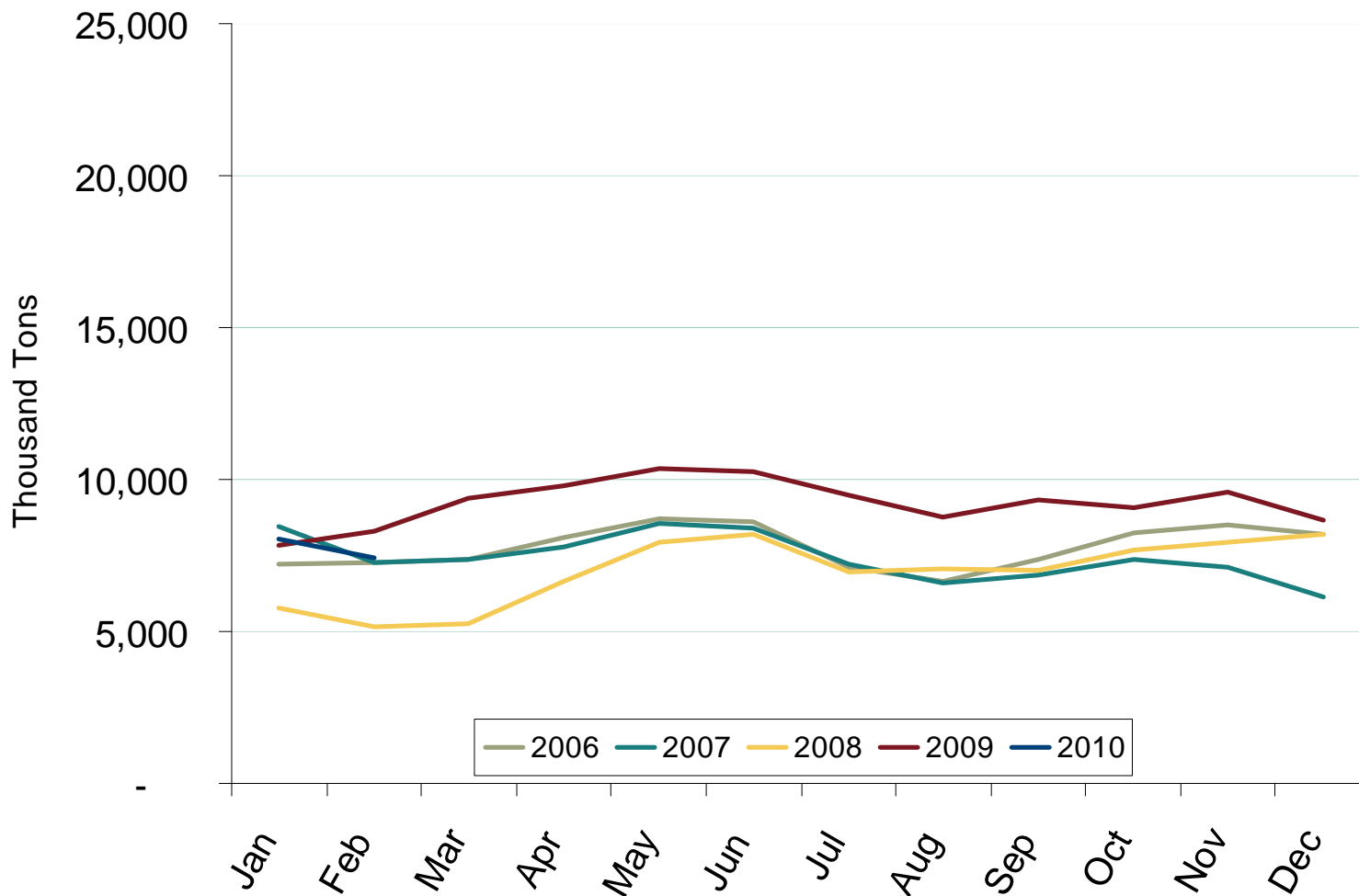


Source: Energy Information Administration. Excludes Industrial and Commercial Plants.

Updated June 7, 2010

31000

## Northeast Coal Stockpiles at Electric Power Generating Facilities

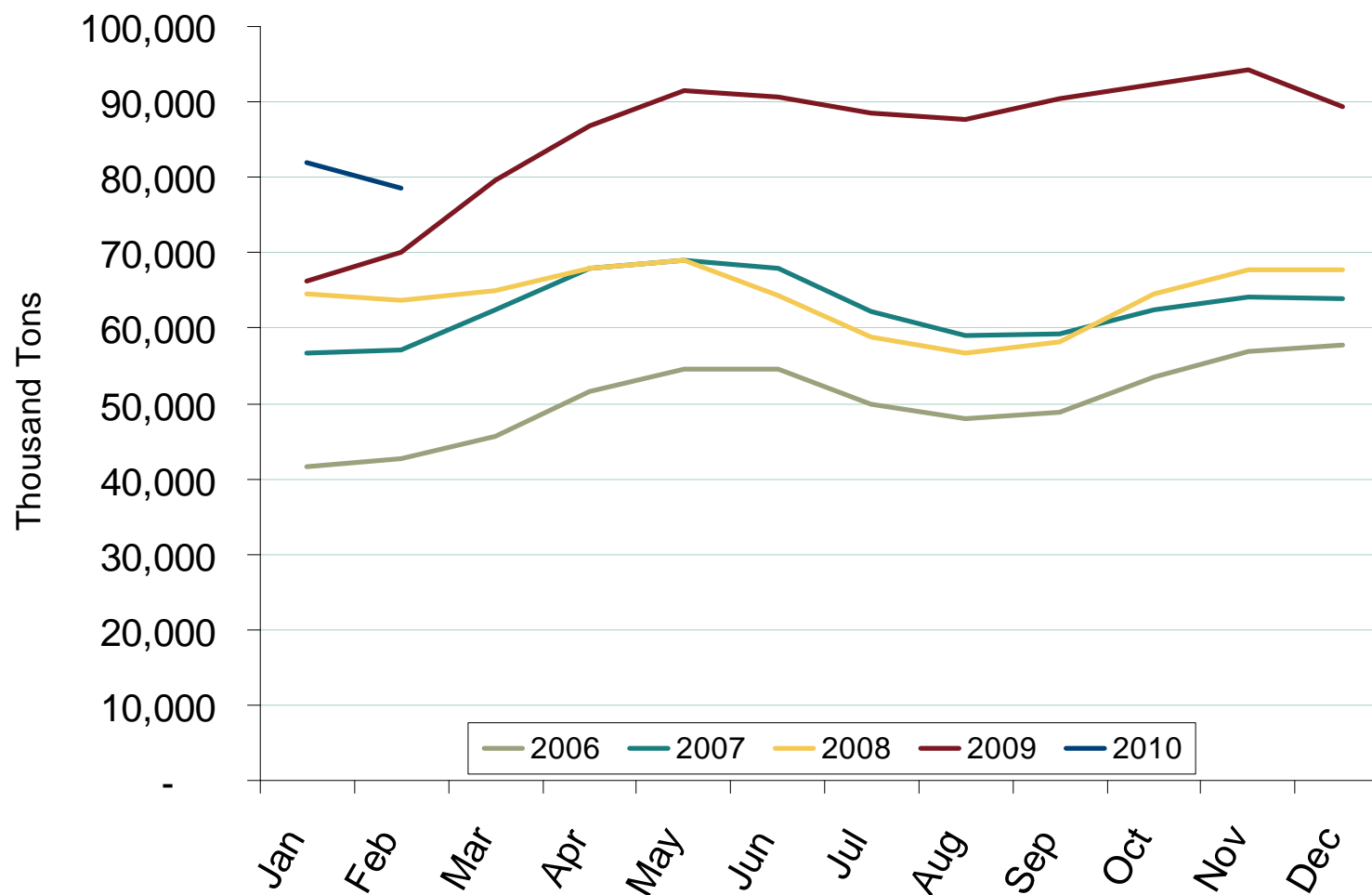


Source: Energy Information Administration. Excludes Industrial and Commercial Plants.

Updated June 7, 2010

31001

## Southeast Coal Stockpiles at Electric Power Generating Facilities

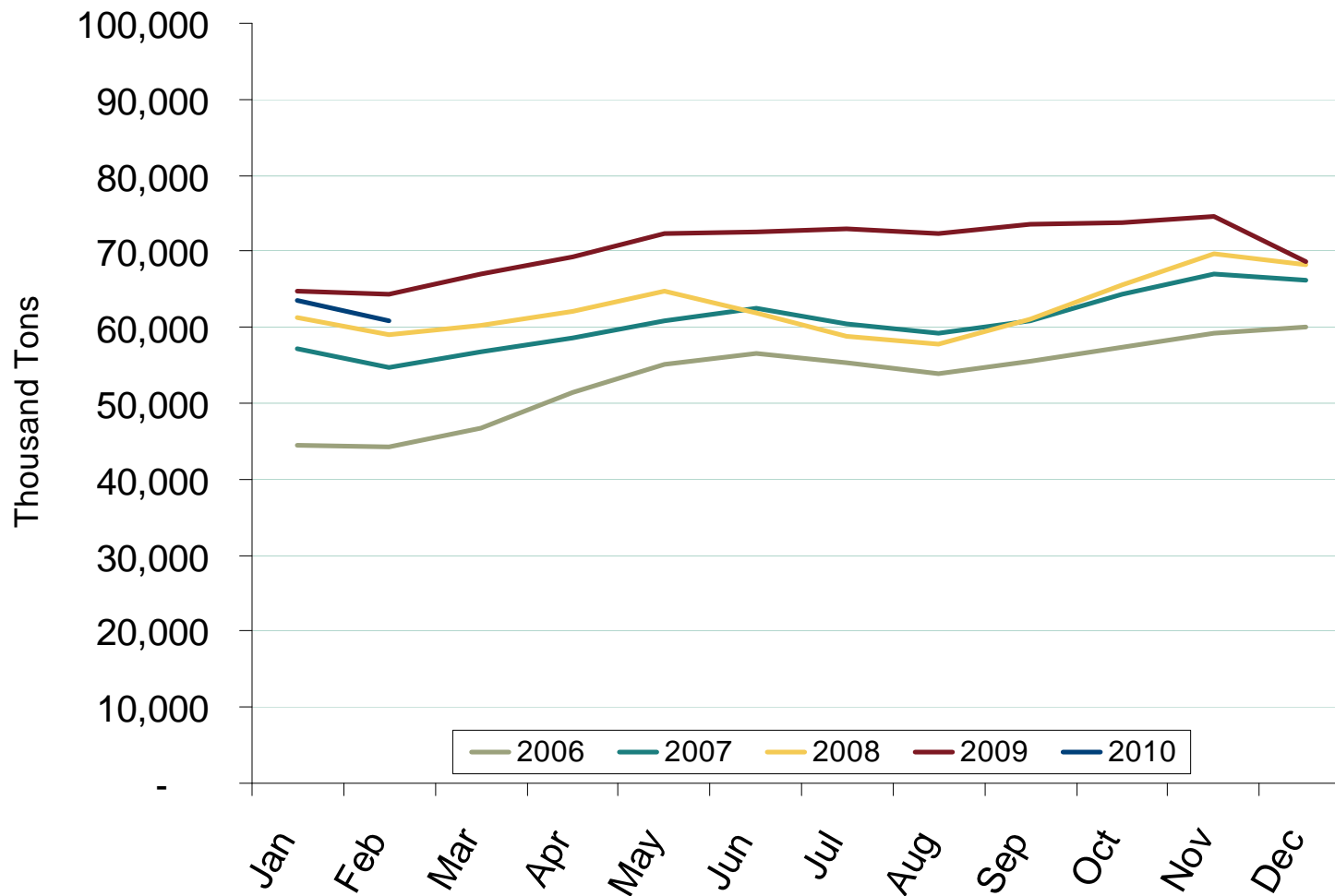


Source: Energy Information Administration. Excludes Industrial and Commercial Plants.

Updated June 7, 2010

31002

## Midwest Coal Stockpiles at Electric Power Generating Facilities



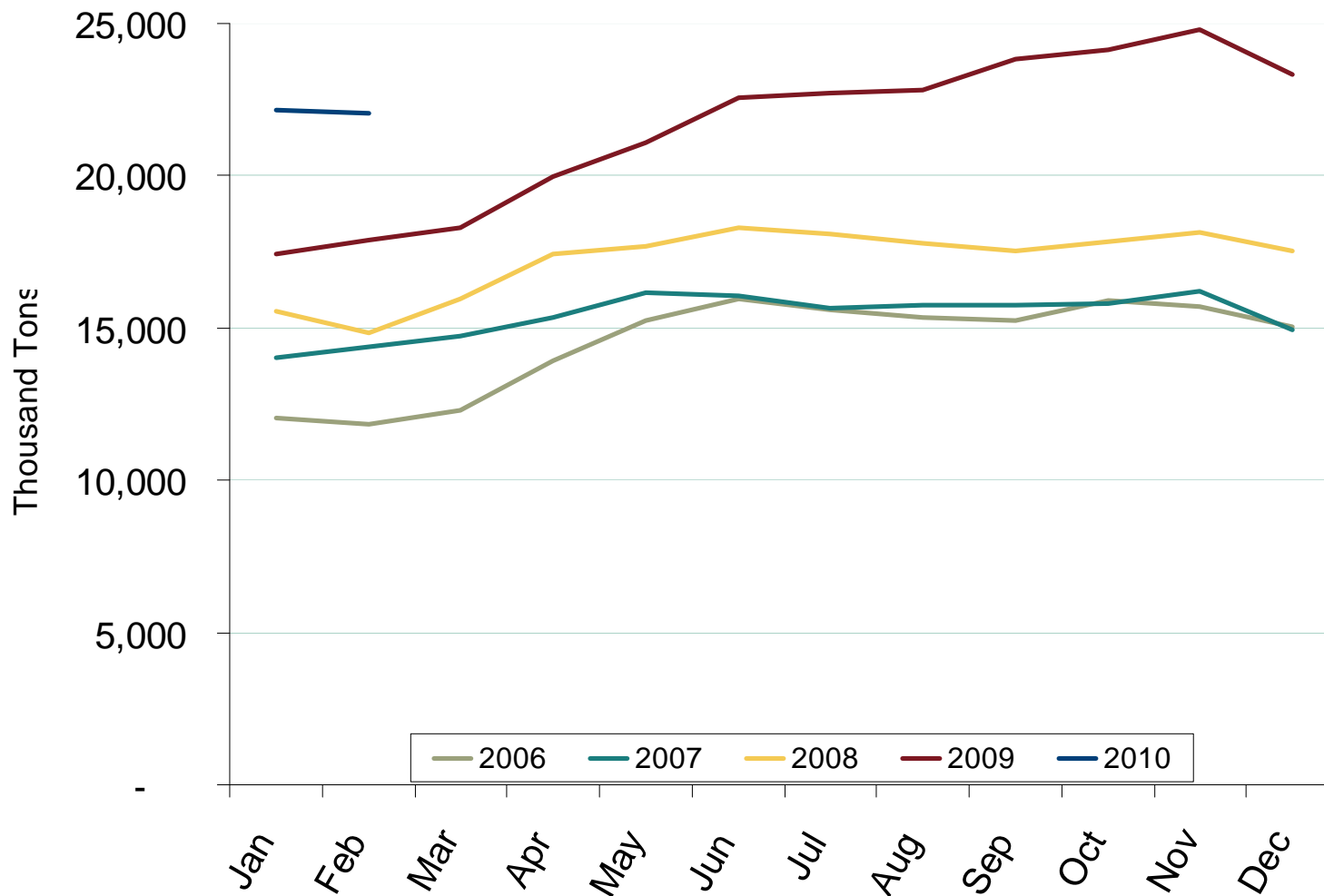
Source: Energy Information Administration. Excludes Industrial and Commercial Plants.

Updated June 7, 2010

31003



## Western Coal Stockpiles at Electric Power Generating Facilities



Source: Energy Information Administration. Excludes Industrial and Commercial Plants.

Updated June 7, 2010

31004