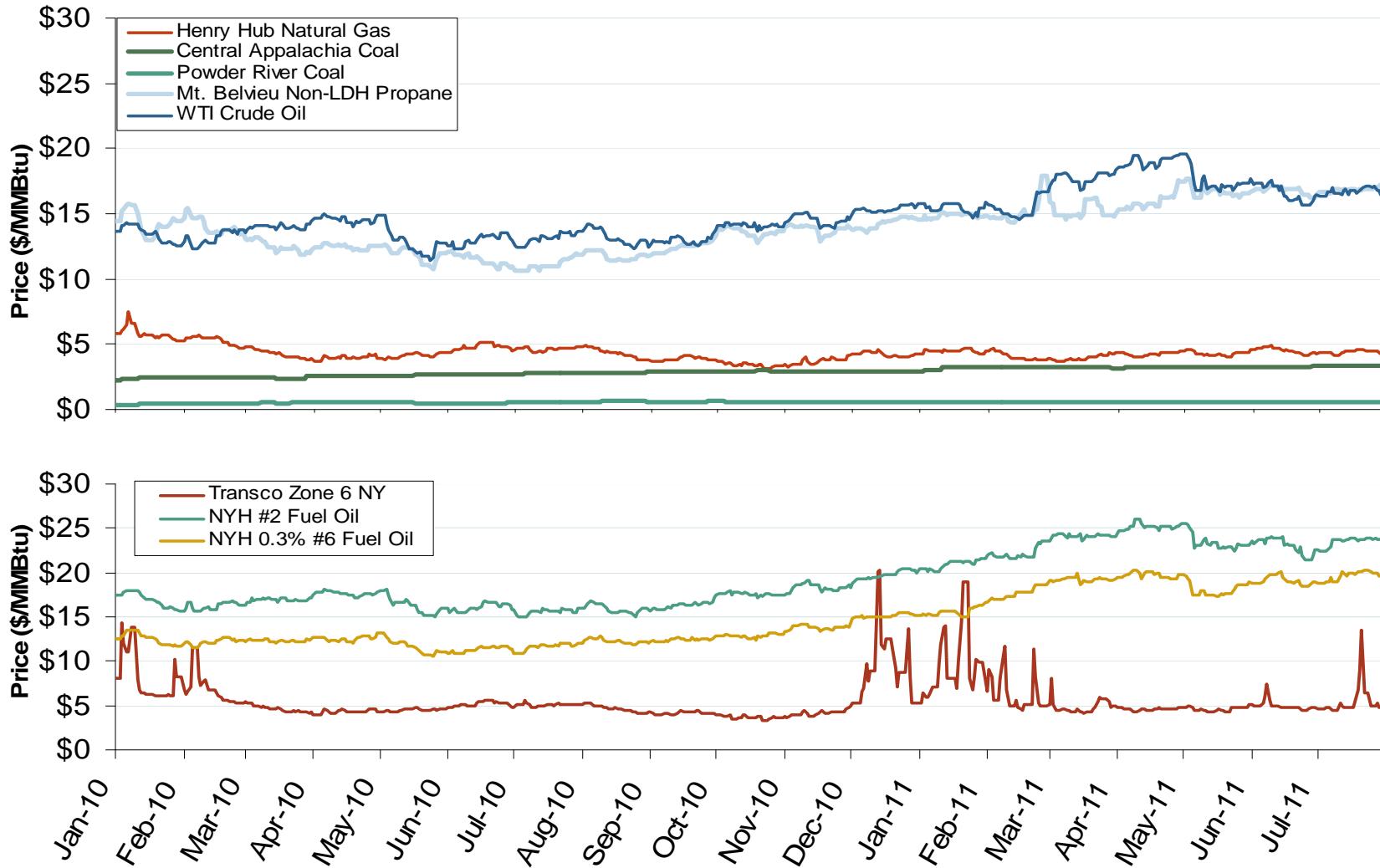


Oil, Coal, Natural Gas and Propane Daily Spot Prices

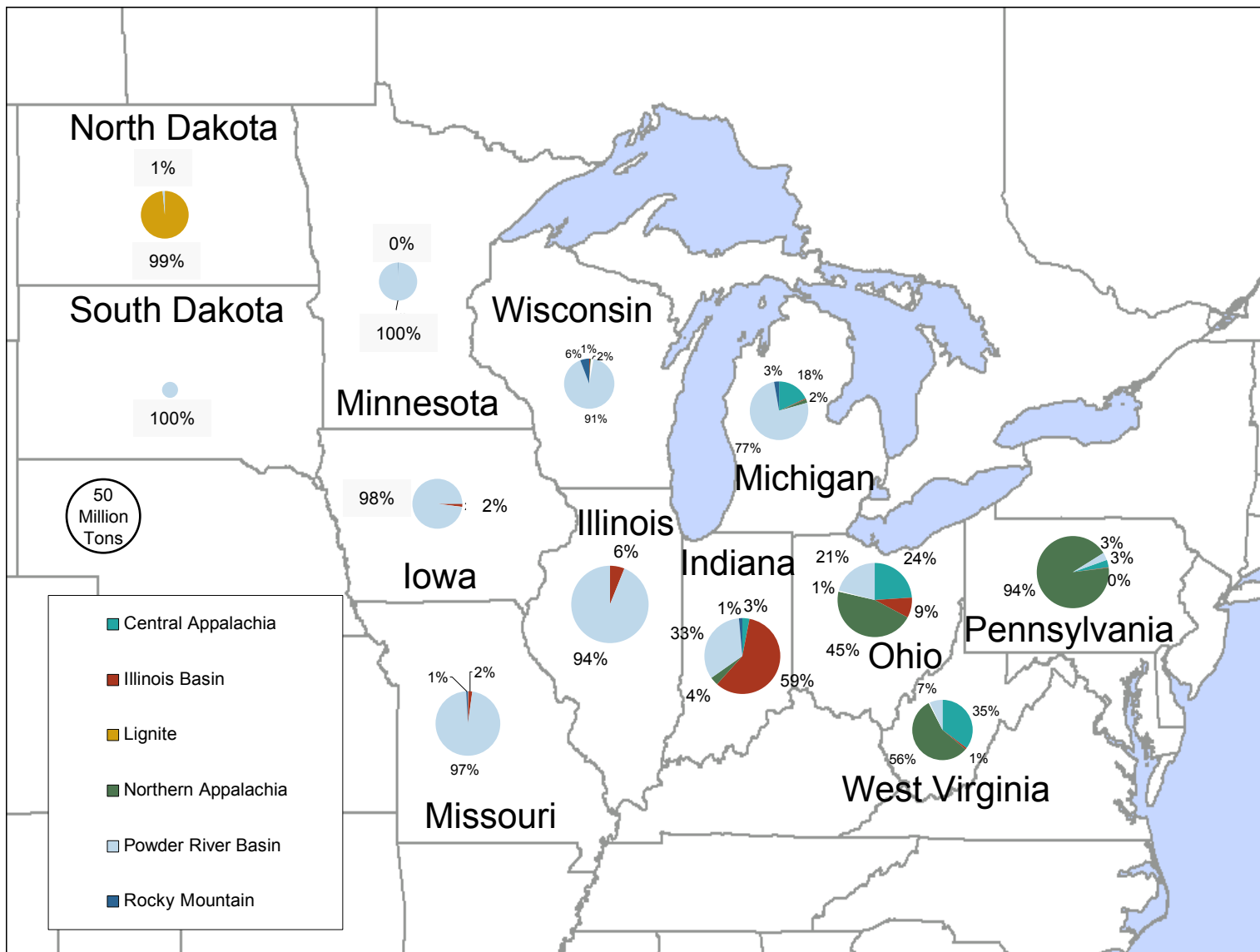


Notes: Coal prices are quoted in \$/ton. Conversion factors to \$/MMBtu are based on contract specifications of 12,000 btus/pound for Central Appalachian coal and 8800 btus/pound for Powder River Basin coal

Source: Derived from ICE and Bloomberg data

Updated: August 05, 2011

2008 Coal Shipment Origins by Supply Basin



Source: Derived from FERC and EIA data.

August 2011

Updated March 23, 2009

U.S. Coal Stockpiles at Electric Power Generating Facilities

