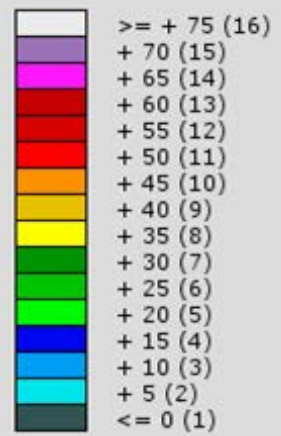


NEXRAD LEVEL-II
 KILX - LINCOLN, IL
 07/24/2011 14:02:51 GMT
 LAT: 40/09/02 N
 LON: 89/20/12 W
 ELEV: 581 FT
 VCP: 212

REFLECTIVITY
 ELEV ANGLE: 0.47

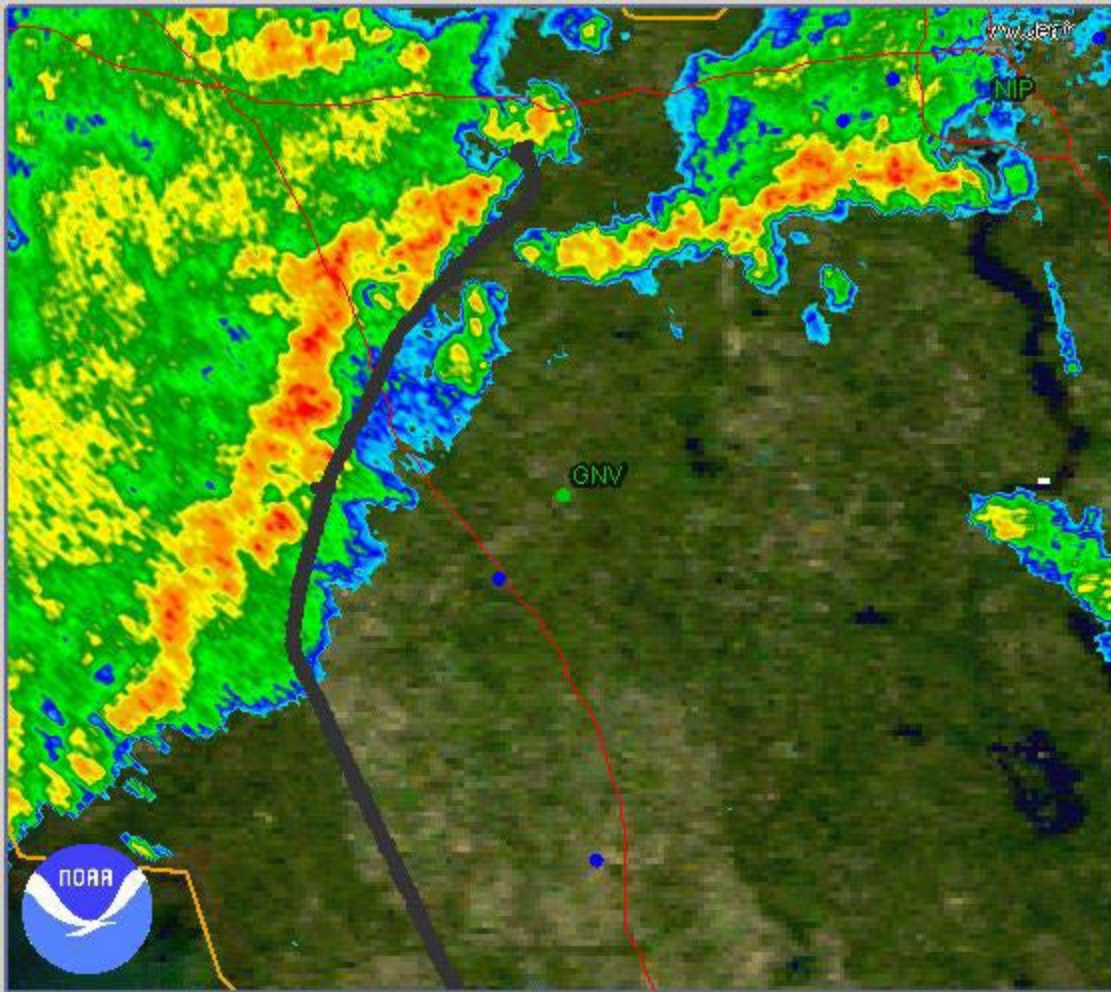
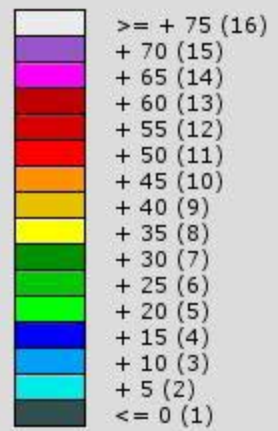
Legend: dBZ (Category)



NEXRAD LEVEL-II
KJAX - JACKSONVILLE, FL
07/08/2009 13:03:57 GMT
LAT: 30/29/05 N
LON: 81/42/07 W
ELEV: 33 FT
VCP: 212

REFLECTIVITY
ELEV ANGLE: 0.45

Legend: dBZ (Category)

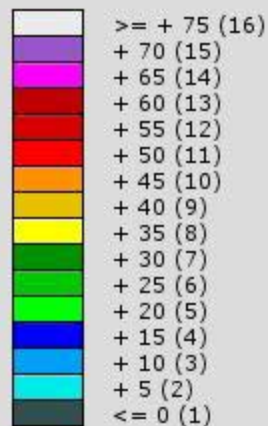


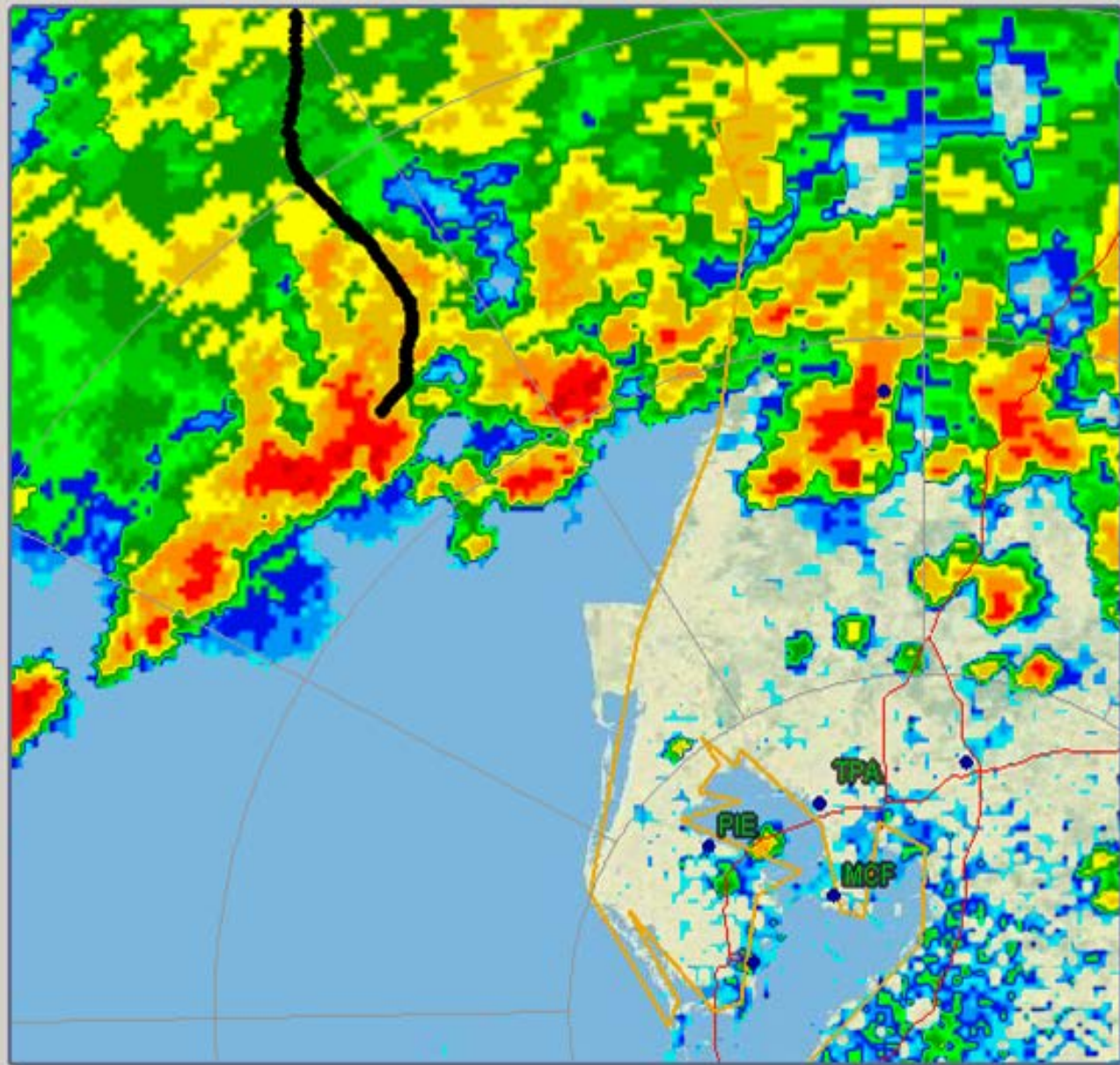
@www.dcn's.nl

NEXRAD LEVEL-II
KJAX - JACKSONVILLE, FL
07/08/2009 13:03:57 GMT
LAT: 30/29/05 N
LON: 81/42/07 W
ELEV: 33 FT
VCP: 212

REFLECTIVITY
ELEV ANGLE: 0.45

Legend: dBZ (Category)

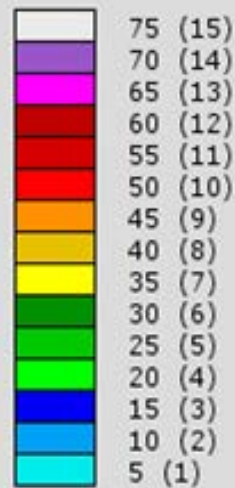




NEXRAD LEVEL-III
COMPOSITE REF. 124NM
KTBW - TAMPA, FL
07/08/2009 18:48:18 GMT
LAT: 27/42/17 N
LON: 82/24/07 W
ELEV: 122 FT
MODE/VCP: A / 211

MAX: 59 dBZ
BOT: 0 KFT
TOP: 0 KFT

Legend: dBZ (Category)





NOAA's National Weather Service Aviation Weather Center


[Home](#)
[News](#)
[Organization](#)
[Search](#)

[QICP Login](#)
[Log In](#)

 Local forecast by
 "City, ST" or Zip Code

[Advisories](#)
[SIGMET/AIRMET »](#)
[Center Weather](#)
[Forecasts](#)
[Convection »](#)
[Turbulence](#)
[Icing](#)
[Winds/Temps »](#)
[Prog Charts »](#)
[TAF / FA »](#)
[Observations](#)
[PIREPs »](#)
[METARs »](#)
[Radar »](#)
[Satellite »](#)
[Java Tools »](#)
[Related Information](#)
[Home »](#)
[Flight Folder](#)
[Standard Briefing](#)
[Aviation Testbed](#)
[Aviation Links](#)
[Contact Us](#)
[FAQ](#)
[Feedback »](#)
[Site Information »](#)
[AWC Home](#)

Top News . . .

- 03 March 2010: The 2010 Aviation Weather Community Forum will be held on May 25-26. [Click here](#) for topics, registration, and other information.
- 01 February 2010: AviationWeather.gov and AviationWeather.gov/adds are now QICP Certified. See [QICP Description](#) for registration info and [QICP Agreement](#) for more details.
- 16 March 2010: Graphical AIRMET (G-AIRMET) became an operational product at 15Z, 16 March, 2010. See [Service Change Notice \(SCN\) 10-04](#) for details.

[Click on image for Vis/Fog Mouseover](#)


INFORMATION VALID 1615 UTC MON 07 JUN 2010

AFC from METARs	(icg) PIREPs	(turb)
LIFR	LGT MOD SEV	LGT MOD SEV

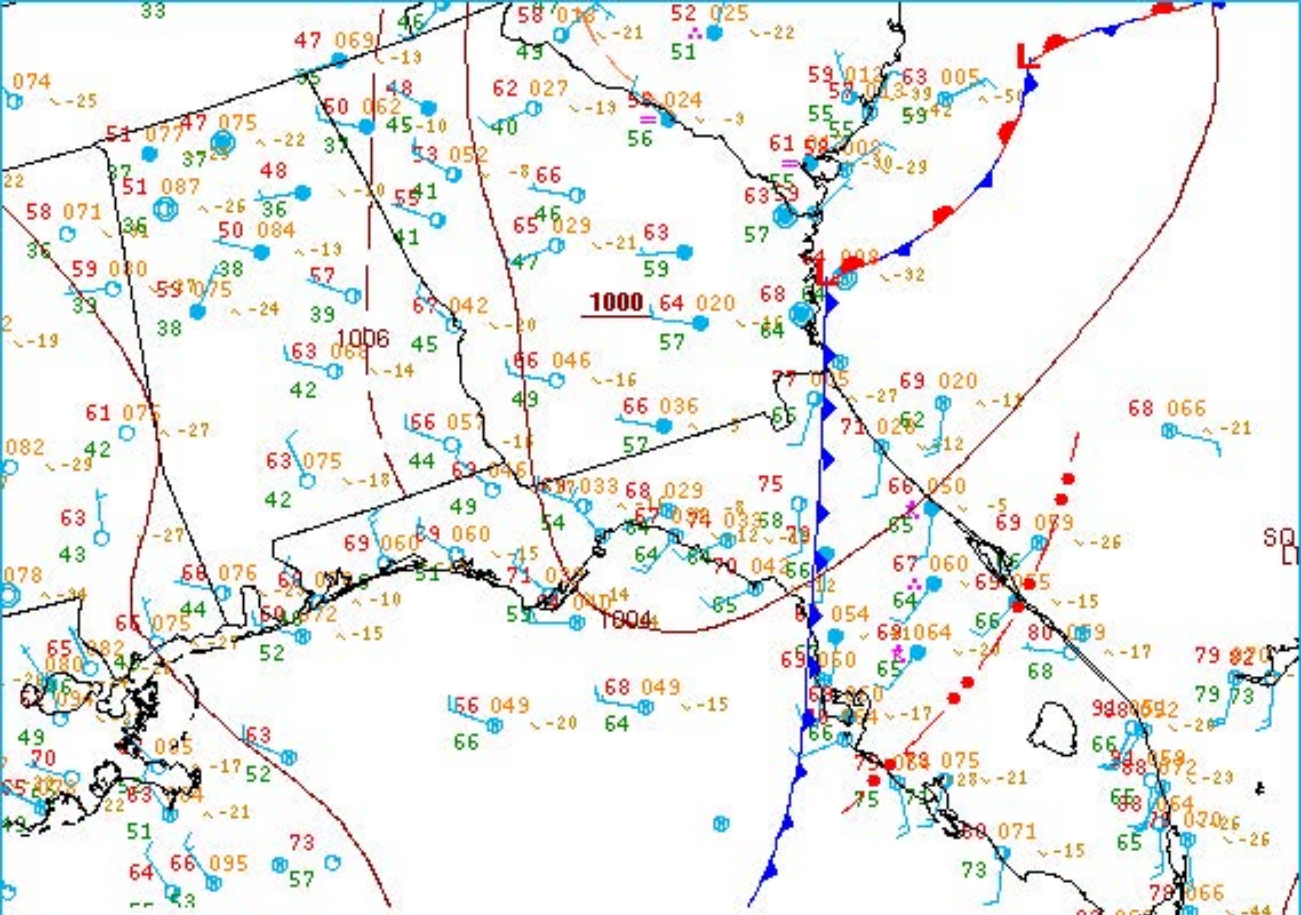
Aviation Weather Center Mission Statement:

The Aviation Weather Center delivers consistent, timely and accurate weather information for the world airspace system. We are a team of highly skilled people dedicated to working with customers and partners to enhance safe and efficient flight.

Our Vision:

The trusted authority and leading innovator for aviation weather information.





2100Z SURFACE ANALYSIS

DATE: THU MAR 31 2011

ISSUED: 2219Z THU MAR 31 2011

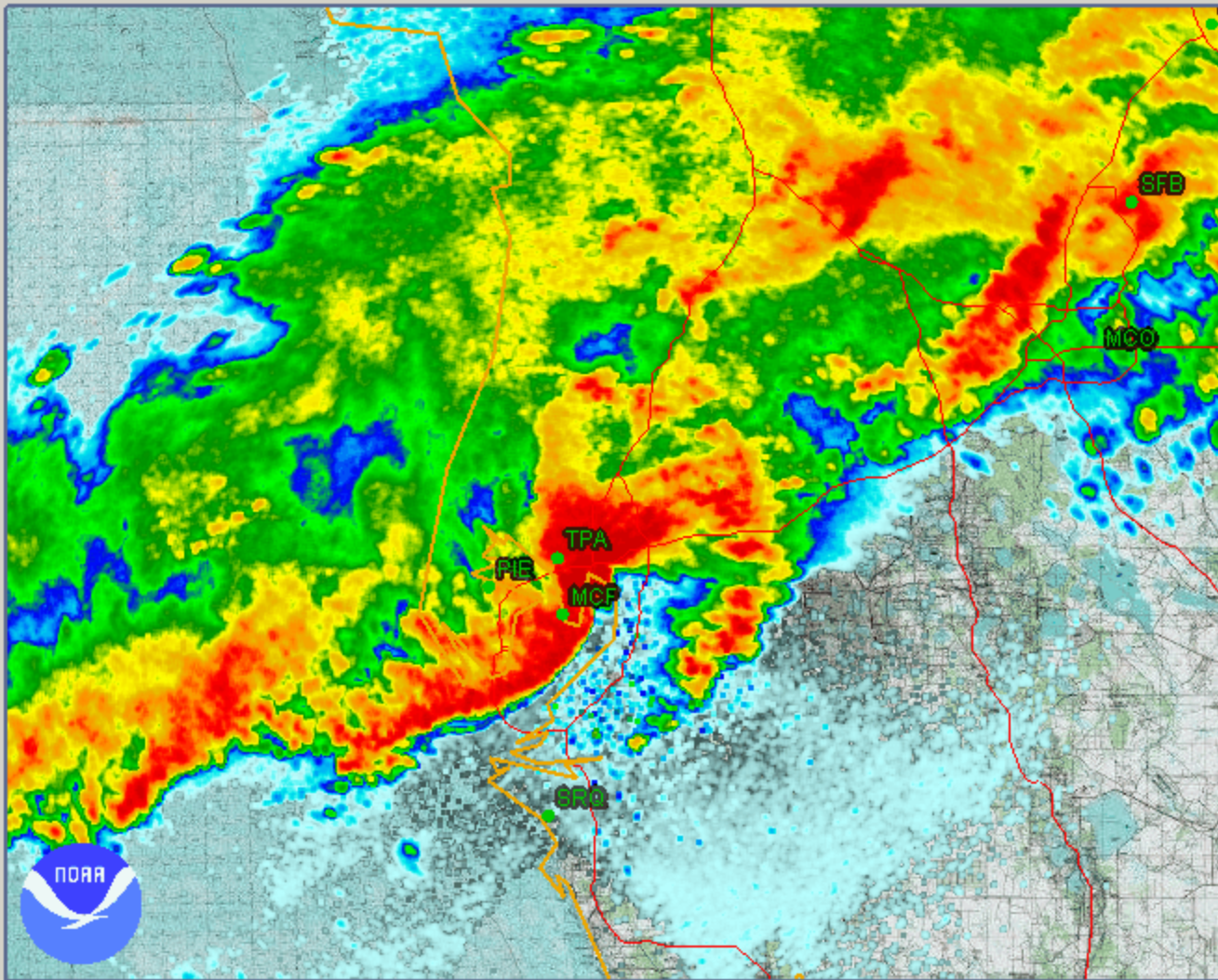
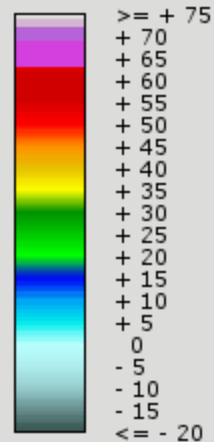
BY HPC ANALYST HAMRICK

COLLABORATING CENTERS: HPC, NHC, OPC

NEXRAD LEVEL-II
KTBW - TAMPA, FL
03/31/2011 15:34:12 GMT
LAT: 27/42/21 N
LON: 82/24/07 W
ELEV: 41 FT
VCP: 212

REFLECTIVITY
ELEV ANGLE: 0.53

Legend: dBZ





Home

News

Organization

Search

Go

[adds](#)
Home

[Turbulence](#)
METARs

[Icing](#)
TAFs

[Convection](#)
PIREPs

[Winds/Temps](#)
AIR/SIGMETs

[Prog Charts](#)
Satellite

[Java Tools](#)
Radar

7

Local forecast by "City, St" or Zip Code

Qty, St:

Find us on Facebook

AWC on Facebook

Advisories
[SIGMET/AIRMET](#) »
Center Weather

Forecasts
[Convection](#) »
[Turbulence](#)
[Icing](#)
[Winds/Temp](#) »
[Prog Charts](#)
[TAF/FA](#) »

Observations
[PIREPs](#) »
[METARs](#) »
[Radar](#) »
[Satellite](#) »

Java Tools »
Related Information
[Home](#) »
[Flight Folder](#)
[Standard Briefing](#)
[Aviation Testbed](#)
[Aviation Links](#)

Analysis and forecast surface conditions (prog charts)

Latest surface analysis



12-h forecast



24-h forecast



36-h forecast



48-h forecast



Significant Weather Charts (SIGWX)

- High Level (FL250-FL630)
- Mid Level (FL100-FL450)
- Low Level (SFC-FL240)

[Turbulence](#) [Icing](#) [Convection](#) [Winds/Temps](#) [Progs](#) [Java Tools](#)
[METARs](#) [TAFs](#) [PIREPs](#) [SIGMET/AIRMET](#) [Satellite](#) [Radar](#)

Page loaded: 21:20 UTC

01:20 PM Pacific | 02:20 PM Mountain | 03:20 PM Central | 04:20 PM Eastern | WOC25



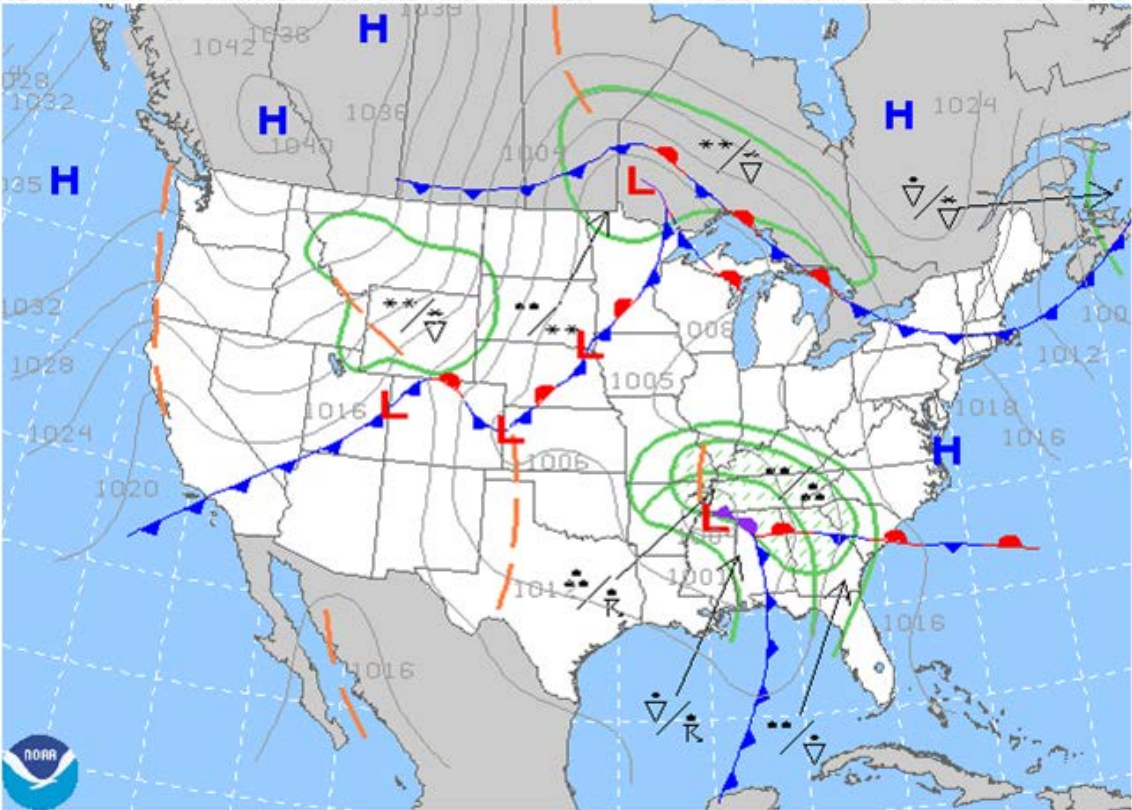
[Return to Prog Charts Page](#)

12 hour forecast

[Print Layout](#)

12-HR FCST OF FRONTS/PRESSURE AND WEATHER

VALID: 0600 UTC WED 11 JAN 2012



DOC/NOAA/NWS/NCEP/HPC

ISSUED: 1609 UTC TUE 10 JAN 2012

Significant Weather Charts (SIGWX)

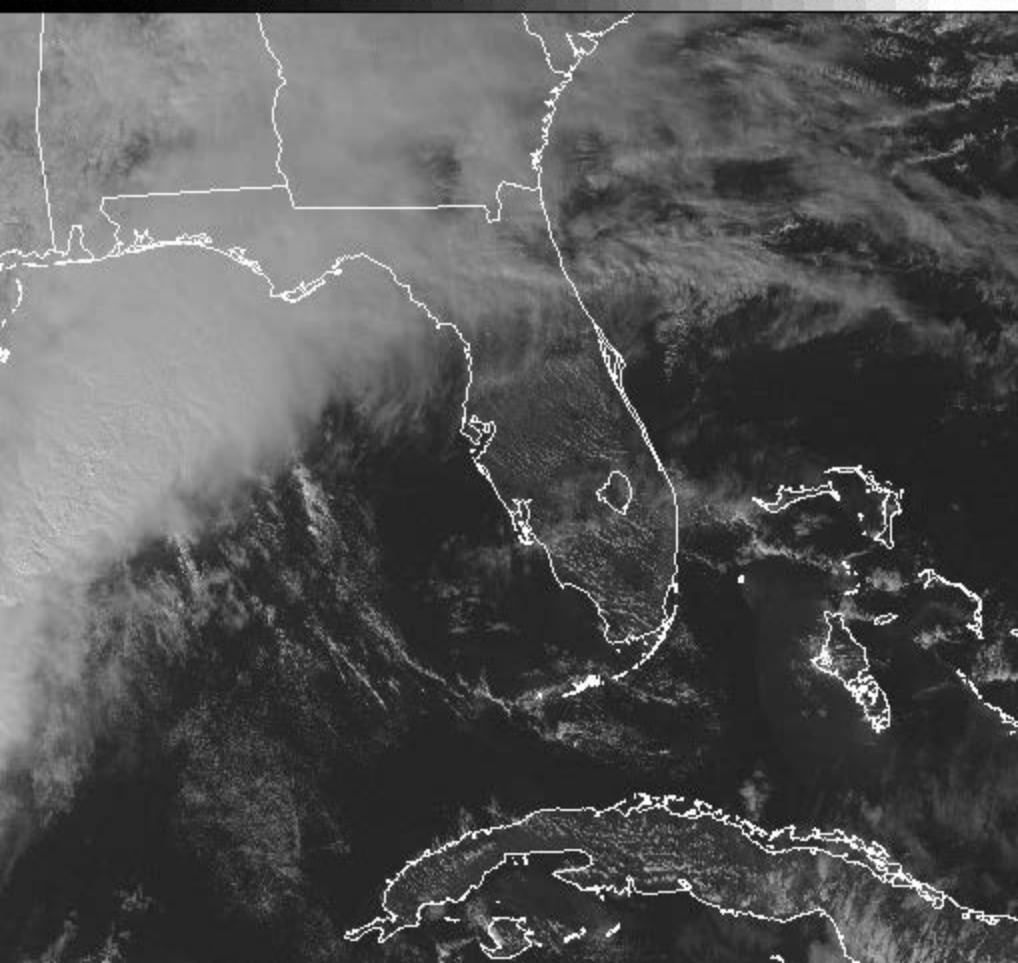
- High Level (FL250-FL630)
- Mid Level (FL 100-FL 450)

2015 UTC Tue 10 Jan 2012

Visible Satellite

<http://adds.aviationweather.gov>

0 6 9 12 15 18 21 24 27 30 33 36 39 42 45 48 51 54 57 60 63 66 69 72 75 78 81 84 87 90 93 96 99



Convective SIGMETs (red) and outlooks (orange)

chart created at 1655 UTC Mon 07 Jun 2010

SIGMETs valid until 1855z/7th, Outlooks valid from 1855z/7th to 2255z/7th





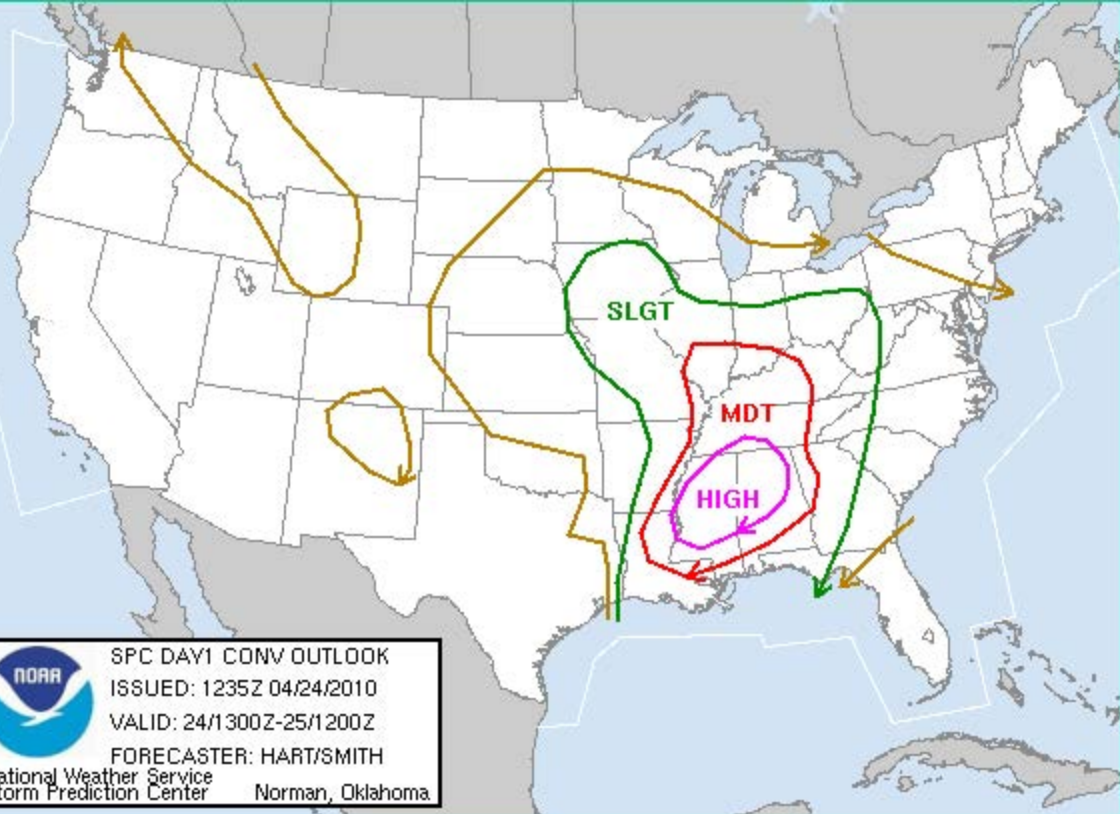
SPC DAY1 CONV OUTLOOK

ISSUED: 1235Z 04/24/2010

VALID: 24/1300Z-25/1200Z

FORECASTER: HART/SMITH

National Weather Service
Storm Prediction Center Norman, Oklahoma



WSUS32 KKCI 071655

SIGC

CONVECTIVE SIGMET 79C

VALID UNTIL 1855Z

KS NE

FROM 20SE OBH-40W PWE-50SE HLC-40E MCK-20SE OBH

AREA IS MOV FROM 30030KT. TOPS ABV FL450.

OUTLOOK VALID 071855-072255

AREA 1...FROM 50NNW GGW-80SW YWG-DPR-FOD-MEM-ELD-50N TXK-30ESE

AMA-PUB-DBL-50NNW GGW

REF WW 279.

WST ISSUANCES EXPD. REFER TO MOST RECENT ACUS01 KWNS FROM STORM
PREDICTION CENTER FOR SYNOPSIS AND METEOROLOGICAL DETAILS.

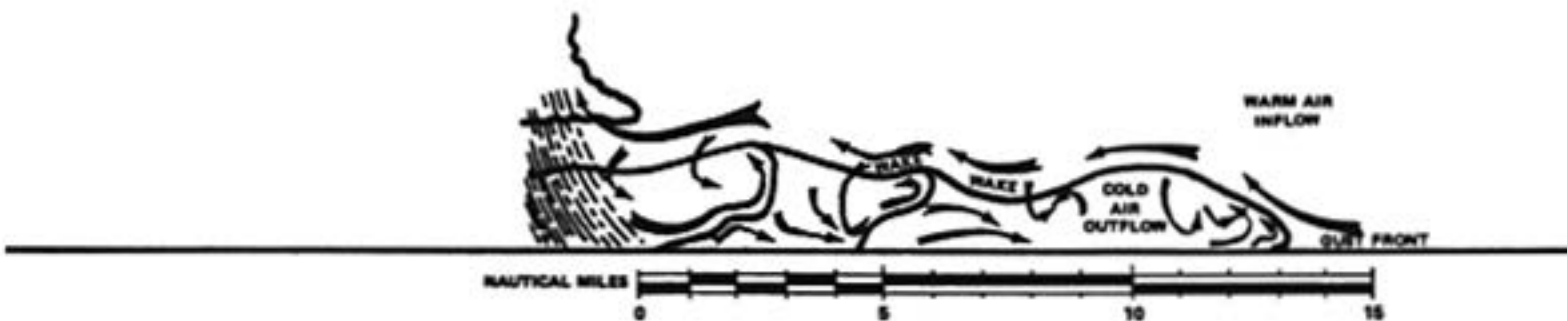
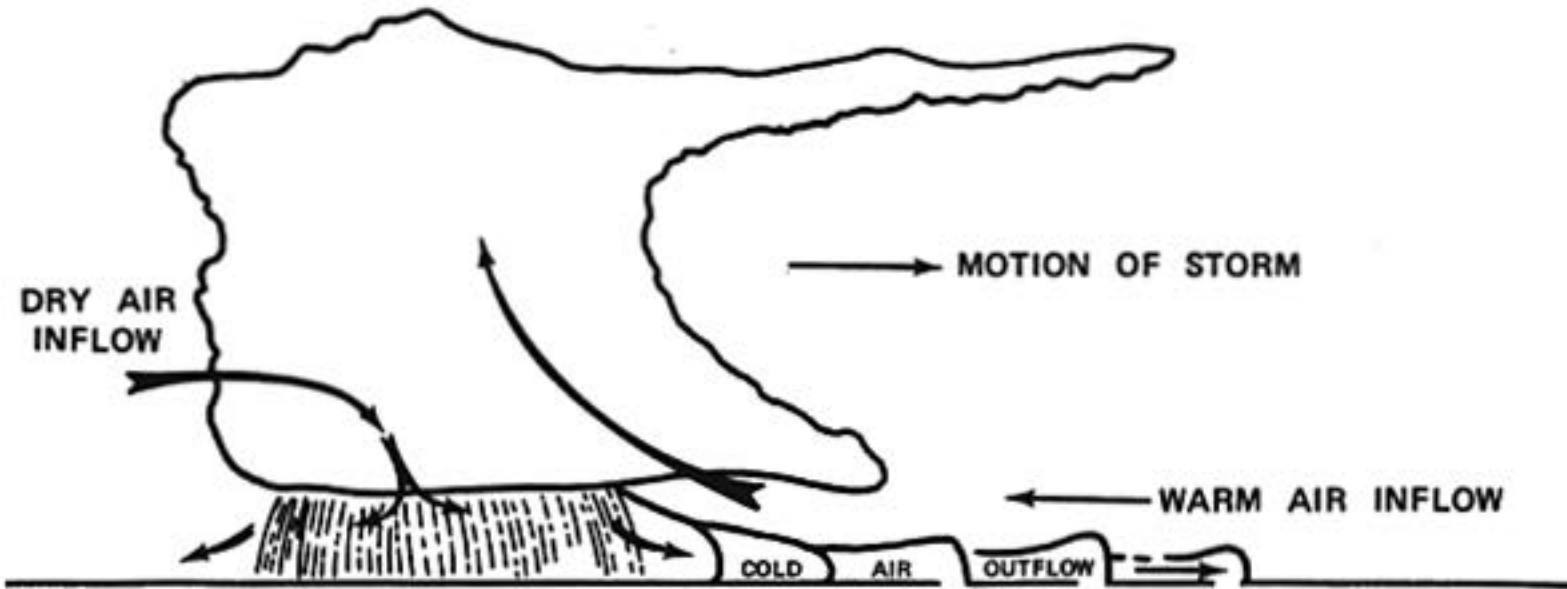
AREA 2...FROM 30WSW MLC-50N TXK-30SW CEW-50ESE LEV-100SE PSX-80E

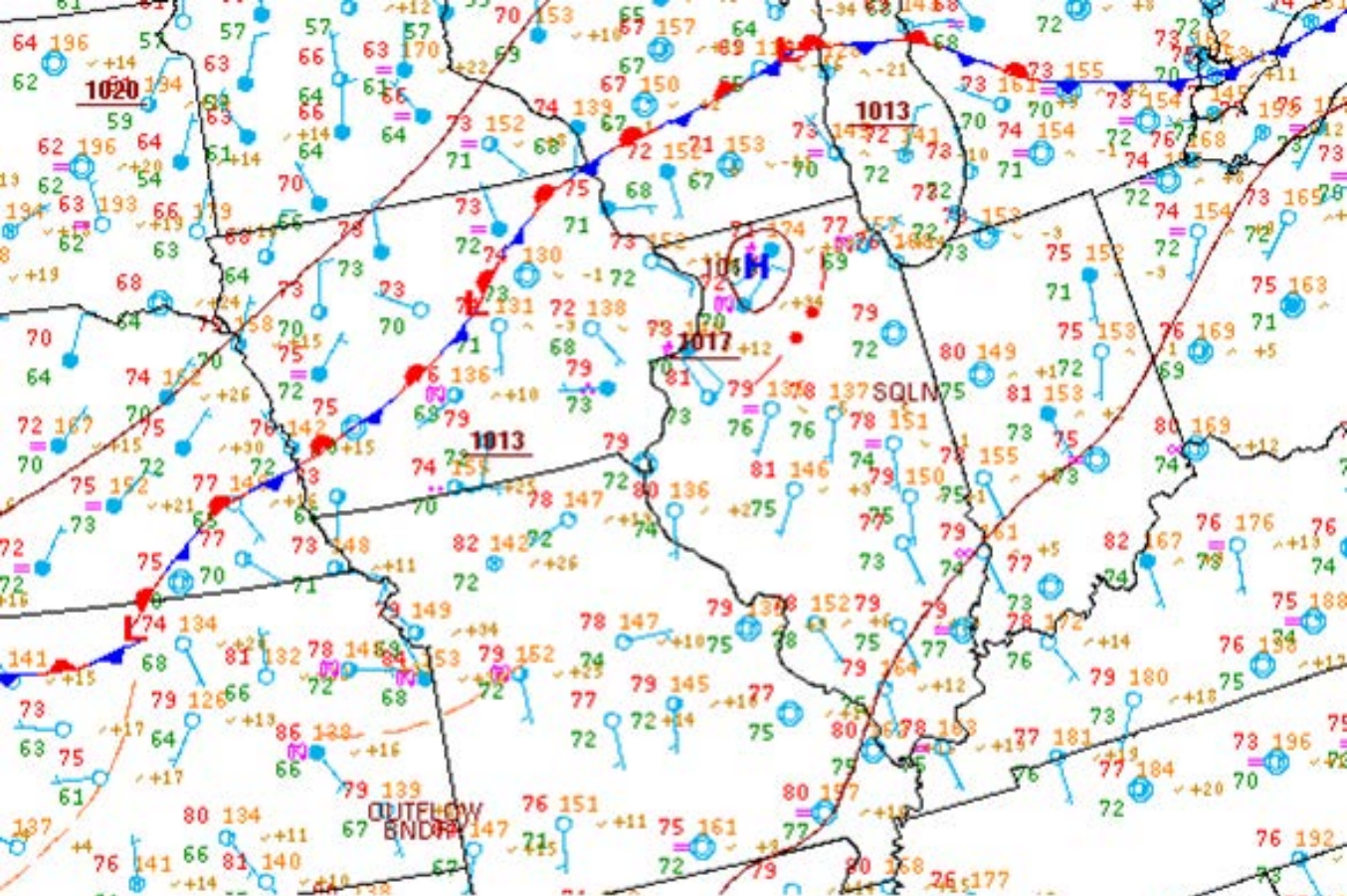
BRO-BRO-60SSE LRD-DLF-30WSW MLC

WST ISSUANCES EXPD. REFER TO MOST RECENT ACUS01 KWNS FROM STORM
PREDICTION CENTER FOR SYNOPSIS AND METEOROLOGICAL DETAILS.

AREA 3...FROM TBE-50NW DLF-90SSE MRF-40W ELP-60ENE RSK-TBE

WST ISSUANCES POSS. REFER TO MOST RECENT ACUS01 KWNS FROM STORM
PREDICTION CENTER FOR SYNOPSIS AND METEOROLOGICAL DETAILS.





1200Z SURFACE ANALYSIS

DATE: SUN JUL 24 2011

ISSUED: 1330Z SUN JUL 24 2011

BY HPC ANALYST SOLTOW

COLLABORATING CENTERS: HPC, NHC, OPC