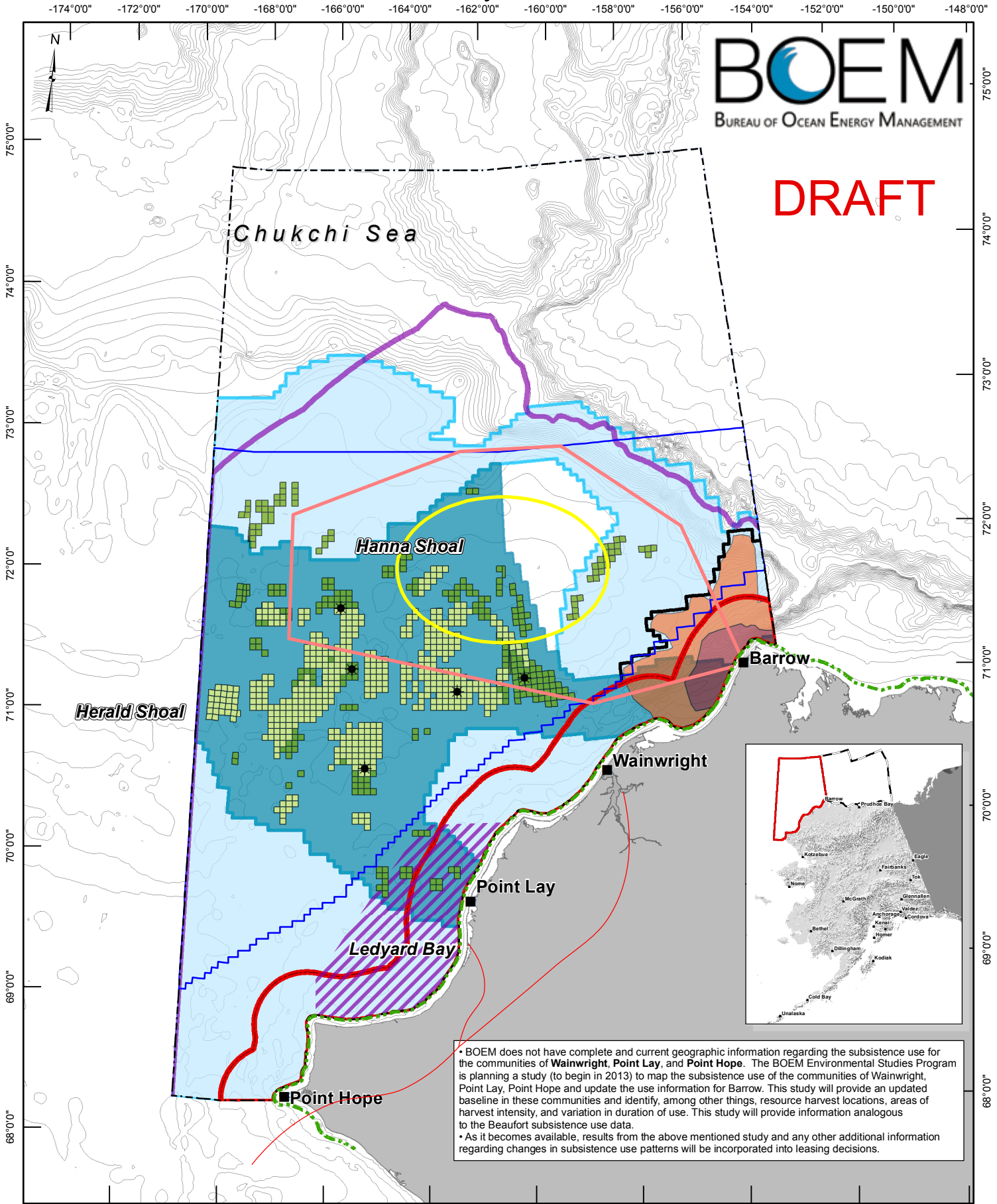


Chukchi Area Analytical Considerations

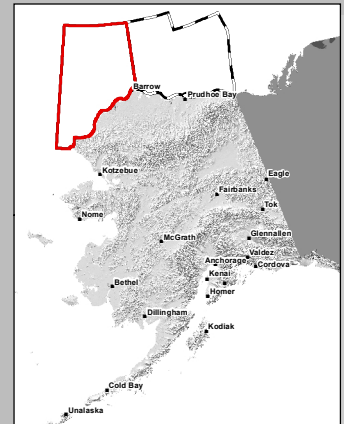
An interactive version of the data depicted here can be found by referencing the "BOEM MMC Mapping Tool - Arctic" map on the Map Gallery Page on MarineCadastrre.gov. Or go direct to: <http://www.marinecadastre.gov/MMC/MMC%20Pages/gallery.aspx>



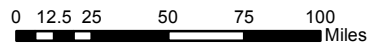
DRAFT



• BOEM does not have complete and current geographic information regarding the subsistence use for the communities of **Wainwright, Point Lay, and Point Hope**. The BOEM Environmental Studies Program is planning a study (to begin in 2013) to map the subsistence use of the communities of Wainwright, Point Lay, Point Hope and update the use information for Barrow. This study will provide an updated baseline in these communities and identify, among other things, resource harvest locations, areas of harvest intensity, and variation in duration of use. This study will provide information analogous to the Beaufort subsistence use data.
 • As it becomes available, results from the above mentioned study and any other additional information regarding changes in subsistence use patterns will be incorporated into leasing decisions.



Coordinate System: NAD 1983 UTM Zone 3N



1:4,000,000

Chukchi Planning Area	Excluded from 2012-2017 Scoping	OCS Historic Leases	High Petroleum Potential	Subsistence, High Use
Fed-State Boundary	OCS Wells	OCS Active Leases	Medium Petroleum Potential	Subsistence, Medium Use
Sale 193 Final Area	Ledyard Bay Spectacled Eider Critical Habitat Area	Ledyard Bay Spectacled Eider Critical Habitat Area	Low Petroleum Potential	Subsistence Deferral
Bathymetry (10 meter intervals)	Polar Bear Critical Habitat	Hanna Shoal Core Study Area	Hanna Shoal Regional Study Area	