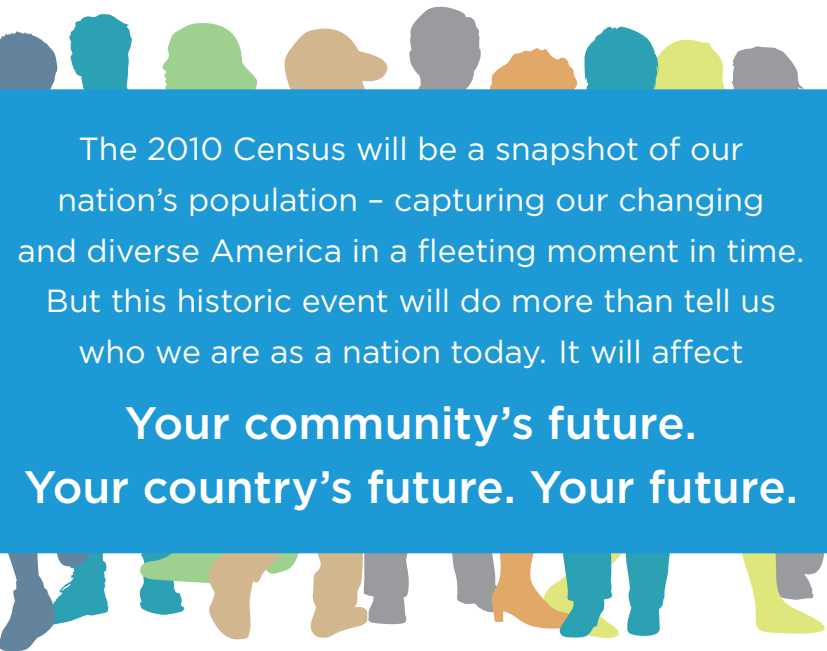


### Would life in your community be better if:

- **You** had access to new hospitals and senior centers or enhanced health care services for ill or aging family members?
- **Your** children could learn in new or improved schools or child-care centers?
- **Your** commute to work were safer and less congested thanks to better roads or expanded public transportation options?
- **Your** local emergency services providers had up-to-date maps to ensure faster response in a crisis?
- **Your** local markets could better deliver goods and services to your community?



The 2010 Census will be a snapshot of our nation's population – capturing our changing and diverse America in a fleeting moment in time. But this historic event will do more than tell us who we are as a nation today. It will affect

**Your community's future.  
Your country's future. Your future.**

The federal government distributes more than \$400 billion annually to state, local and tribal governments based on census data. One of the shortest census forms in history, the 2010 Census form asks 10 questions and takes about 10 minutes to complete. Completing your census form is easy, important and safe. Your participation is vital.

By participating in the census, you can help create a better future for you and those important to you.

### We move forward when you send it back.

Make a difference in your community and be counted in 2010.  
Complete and return your 2010 Census form.

To learn more, visit

**2010census.gov**

“By participating in the 2010 Census we will be providing a footprint to future generations that will help them understand the world that we live in today.”

– Ancestry.com



## The 2010 Census: How People Are Counted

United States<sup>®</sup>  
**Census  
2010**  
It's In Our Hands

# 5 key steps to counting every person in the nation

How will the 2010 Census actually happen? Many operations, people and activities must come together to produce a successful census. Here are five key steps every U.S. resident should know:

**Step 1: Census is underway.** Census workers canvassed the country between April and July 2009 to update addresses and maps from the previous census. This process is important because buildings that existed in the last census may no longer be standing, or a community may have new construction that needs to be recorded.

**Step 2: The form arrives.** More than 130 million addresses throughout the nation will receive a census form in March 2010, either by mail or in person from a census worker. Households should complete and return their forms upon receipt.

**Step 3: Census Day is April 1, 2010.** Responses to the census form should include everyone living at your address. By law, the Census Bureau cannot share an individual's personal information with anyone, including other federal agencies and law enforcement entities.

**Step 4: Follow-up because every person matters.** Addresses that still have not responded are visited in person by a census worker beginning in late April through July. (Census workers can be identified by a census badge and bag.)

**Step 5: The results are in!** The Census Bureau will provide the 2010 apportionment counts to the President by Dec. 31, 2010, which include the total population counts and the number of representatives for each state.

## Where should you be counted?

Most people should be counted in the residence in which they live or sleep most of the time. However, some individuals or groups have unique living situations. The Census Bureau residence rule helps make it clear where people should be counted. Common situations include:

### Typical living situations

| Living situation   | Where they are counted                                |
|--|---|
| Live at their home and nowhere else                      | Their home  |
| On vacation or a business trip                           | Their home where they live and sleep most of the time |
| Live no one place regularly OR Experiencing homelessness | The residence in which they are staying on Census Day |



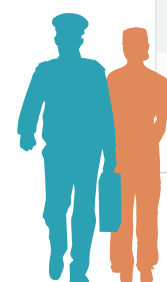
### People in places where groups of people live

| Living situation  | Where they are counted |
|---|------------------------|
| Places where groups of people live such as jails or prisons, group homes, domestic violence shelters, and emergency or transitional shelters for people experiencing homelessness | Group location         |



### U.S. military personnel

| Living situation  | Where they are counted                                   |
|---|--|
| In barracks in the United States                                  | The barracks   |
| On base or off base in the United States, but not in the barracks | The residence where they live and sleep most of the time |
| In the military and living overseas                               | Counted using the military's records for home address    |



### College students

| Living situation  | Where they are counted          |
|---|---------------------------------|
| Live with their parents while attending college in the United States          | Parental home                   |
| Live away from the parental home while attending college in the United States | On-campus or off-campus housing |
| Attend college outside the United States                                      | Not counted in the census       |



### Foreign citizens in the United States

| Living situation   | Where they are counted                                   |
|--|--|
| Citizens of foreign countries living in the United States                  | The residence where they live and sleep most of the time |
| Foreign citizens visiting the United States on a vacation or business trip | Not counted in the census                                |



### People on the move

| Living situation  | Where they are counted   |
|---|--|
| Staying at more than one place (like a vacation home) or at a transitory location, such as recreational vehicle (RV) parks, campgrounds, marinas, racetracks, circuses or carnivals | In the residence in which they live and sleep most of the time                       |
|   | In the residence in which they are staying on Census Day, if time is divided equally |

