

Yakima Transit (YT)

General Information

Urbanized Area (UZA) Statistics - 2000 Census

Yakima, WA	
Square Miles	50
Population	112,816
Population Ranking out of 465 UZAs	241
Other UZAs Served	

Service Consumption

Annual Passenger Miles	9,216,410
Annual Unlinked Trips	1,501,368
Average Weekday Unlinked Trips	5,438
Average Saturday Unlinked Trips	1,785
Average Sunday Unlinked Trips	91

Service Area Statistics

Square Miles	28
Population	92,035

Service Supplied

Annual Vehicle Revenue Miles	1,737,264
Annual Vehicle Revenue Hours	107,960
Vehicles Operated in Maximum Service	68
Vehicles Available for Maximum Service	98
Base Period Requirement	15

Financial Information

Fare Revenues Earned	\$890,844
Sources of Operating Funds Expended	
Fare Revenues	(12%) \$890,844
Local Funds	(58%) \$4,300,876
State Funds	(3%) \$203,301
Federal Assistance	(26%) \$1,923,409
Other Funds	(1%) \$102,140
Total Operating Funds Expended	\$7,420,570
Sources of Capital Funds Expended	
Local Funds	(2%) \$37,831
State Funds	(7%) \$143,256
Federal Assistance	(91%) \$2,001,000
Other Funds	(1%) \$19,000
Total Capital Funds Expended	\$2,201,087

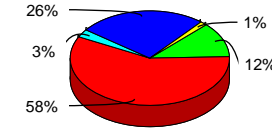
Summary Operating Expenses

Salary, Wages, Benefits	\$3,638,577
Materials and Supplies	\$893,593
Purchased Transportation	\$1,101,762
Other Operating Expenses	\$1,786,638
Total Operating Expenses	\$7,420,570
Reconciling Cash Expenditures	\$0

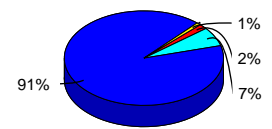
Vehicles Operated in Maximum Service and Uses of Capital Funds

Mode	Directly Operated	Purchased ¹ Transportation	Revenue Vehicles	Systems and Guideways	Facilities and Stations	Other	Total
Bus	18	0	\$1,933,566	\$0	\$76,328	\$0	\$2,009,894
Demand Response	0	23	\$191,193	\$0	\$0	\$0	\$191,193
Vanpool	27	0	\$0	\$0	\$0	\$0	\$0
Total	45	23	\$2,124,759	\$0	\$76,328	\$0	\$2,201,087

Sources of Operating Funds Expended



Sources of Capital Funds Expended



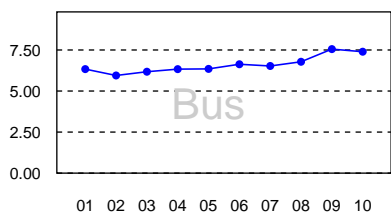
Modal Characteristics

Mode	Operating Expenses ¹	Fare Revenues ¹	Uses of Capital Funds	Annual Passenger Miles	Annual Vehicle Revenue Miles	Annual Unlinked Trips	Annual Vehicle Revenue Hours	Fixed Guideway Directional Route Miles	Vehicles Available for Maximum Service	Average Fleet Age in Years	Vehicles Operated in Maximum Service	Peak to Base Ratio	Percent Spares
Bus	\$5,760,027	\$534,590	\$2,009,894	3,693,726	778,941	1,312,116	54,850	N/A	24	7.0	18	1.20	33%
Demand Response	\$1,330,026	\$130,944	\$191,193	305,189	413,087	87,484	40,994	N/A	40	5.0	23	N/A	74%
Vanpool	\$330,517	\$225,310	\$0	5,217,495	545,236	101,768	12,116	N/A	34	3.8	27	N/A	26%

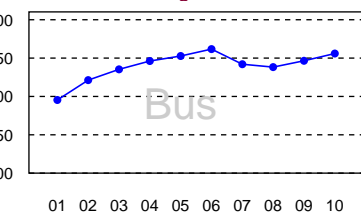
Performance Measures

Mode	Service Efficiency		Service Effectiveness		Service Effectiveness	
	Operating Expense per Vehicle Revenue Mile	Operating Expense per Vehicle Revenue Hour	Operating Expense per Passenger Mile	Operating Expense per Unlinked Passenger Trip	Unlinked Passenger Trips per Vehicle Revenue Mile	Unlinked Passenger Trips per Vehicle Revenue Hour
Bus	\$7.39	\$105.01	\$1.56	\$4.39	1.68	23.92
Demand Response	\$3.22	\$32.44	\$4.36	\$15.20	0.21	2.13
Vanpool	\$0.61	\$27.28	\$0.06	\$3.25	0.19	8.40

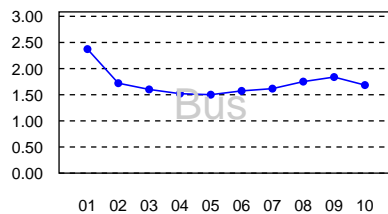
Operating Expense per Vehicle Revenue Mile



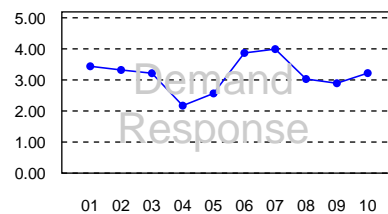
Operating Expenses per Passenger Mile



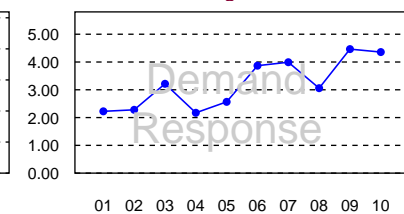
Unlinked Passenger Trips per Vehicle Revenue Mile



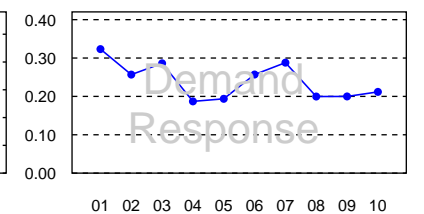
Operating Expense per Vehicle Revenue Mile



Operating Expenses per Passenger Mile



Unlinked Passenger Trips per Vehicle Revenue Mile



¹ Excludes data for purchased transportation reported separately