

General Information

Urbanized Area (UZA) Statistics - 2000 Census

Yakima, WA	
Square Miles	50
Population	112,816
Population Ranking out of 465 UZAs	241
Other UZAs Served	

Service Area Statistics

Square Miles	28
Population	92,035

Service Consumption

Annual Passenger Miles	8,339,107
Annual Unlinked Trips	1,531,016
Average Weekday Unlinked Trips	5,485
Average Saturday Unlinked Trips	2,176
Average Sunday Unlinked Trips	91

Service Supplied

Annual Vehicle Revenue Miles	1,662,160
Annual Vehicle Revenue Hours	109,952
Vehicles Operated in Maximum Service	75
Vehicles Available for Maximum Service	85
Base Period Requirement	10

Financial Information

Fare Revenues Earned \$798,079

Sources of Operating Funds Expended

Fare Revenues	(11%)	\$798,079
Local Funds	(62%)	4,404,692
State Funds	(1%)	88,355
Federal Assistance	(25%)	1,762,894
Other Funds	(1%)	78,874

Total Operating Funds Expended \$7,132,894

Sources of Capital Funds Expended

Local funds	(36%)	\$225,979
State Funds	(37%)	233,186
Federal Assistance	(24%)	150,005
Other Funds	(4%)	23,344

Total Capital Funds Expended \$632,514

Summary of Operating Expenses

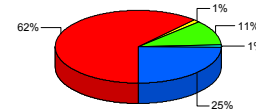
Salary, Wages and Benefits	\$3,431,053
Materials and Supplies	749,509
Purchased Transportation	1,093,847
Other Operating Expenses	1,858,485
Total Operating Expenses	\$7,132,894

Reconciling Cash Expenditures \$0

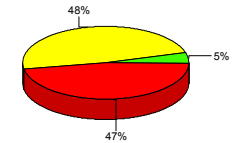
Vehicles Operated in Maximum Service and Uses of Capital Funds

	Directly Operated	Purchased Transportation ¹	Revenue Vehicles	Systems and Guideways	Facilities and Stations	Other	Total
Bus	20	0	\$416,480	\$0	\$62,425	\$0	\$478,905
Demand Response	0	35	\$0	\$0	\$0	\$0	\$0
Vanpool	20	0	\$153,609	\$0	\$0	\$0	\$153,609
Total	40	35	\$570,089	\$0	\$62,425	\$0	\$632,514

Sources of Operating Funds Expended



Sources of Capital Funds Expended



Modal Characteristics

	Operating Expenses ¹	Fare Revenues ¹	Uses of Capital Funds	Annual Passenger Miles	Annual Vehicle Revenue Miles	Annual Unlinked Trips	Annual Vehicle Revenue Hours	Fixed Guideway Directional Route Miles	Vehicles Available for Maximum Service	Average Fleet Age in Years	Vehicles Operated in Maximum Service	Peak to Base Ratio	Percent Spares
Bus	\$5,543,089	\$495,585	\$478,905	3,784,316	733,777	1,349,024	51,421	0.0	24	8.2	20	1.80	20%
Demand Response	\$1,309,235	\$110,008	\$0	293,259	452,504	90,440	47,867	N/A	35	5.4	35	N/A	0%
Vanpool	\$280,570	\$192,486	\$153,609	4,261,532	475,879	91,552	10,664	N/A	26	2.9	20	N/A	30%

Performance Measures

Service Efficiency

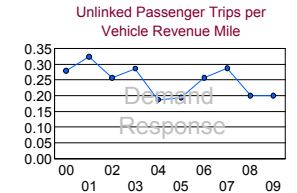
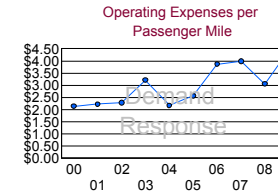
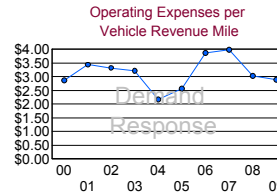
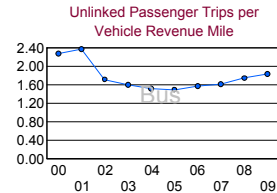
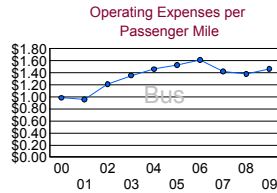
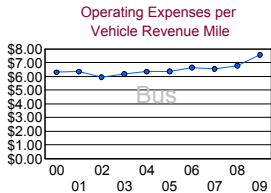
	Operating Expense per Vehicle Revenue Mile	Operating Expense per Vehicle Revenue Hour
Bus	\$7.55	\$107.80
Demand Response	\$2.89	\$27.35
Vanpool	\$0.59	\$26.31

Cost Effectiveness

	Operating Expense per Passenger Mile	Operating Expense per Unlinked Passenger Trip
Bus	\$1.46	\$4.11
Demand Response	\$4.46	\$14.48
Vanpool	\$0.07	\$3.06

Service Effectiveness

	Unlinked Passenger Trips per Vehicle Revenue Mile	Unlinked Passenger Trips per Vehicle Revenue Hour
Bus	1.84	26.23
Demand Response	0.20	1.89
Vanpool	0.19	8.59



¹ Excludes data for purchased transportation reported separately