

**General Information**

**Urbanized Area (UZA) Statistics - 2000 Census**

Medford, OR	
Square Miles	59
Population	128,780
Population Ranking out of 465 UZAs	214
Other UZAs Served	

**Service Area Statistics**

Square Miles	128
Population	131,000

**Service Consumption**

Annual Passenger Miles	1,928,620
Annual Unlinked Trips	922,847
Average Weekday Unlinked Trips	9,268
Average Saturday Unlinked Trips	0
Average Sunday Unlinked Trips	0

**Service Supplied**

Annual Vehicle Revenue Miles	872,692
Annual Vehicle Revenue Hours	62,957
Vehicles Operated in Maximum Service	45
Vehicles Available for Maximum Service	45
Base Period Requirement	19

**Financial Information**

**Fare Revenues Earned** \$472,055

**Sources of Operating Funds Expended**

Fare Revenues	( 8%)	\$472,103
Local Funds	( 48%)	2,673,960
State Funds	( 21%)	1,142,385
Federal Assistance	( 14%)	792,760
Other Funds	( 9%)	491,021
<b>Total Operating Funds Expended</b>		<b>\$5,572,229</b>

**Sources of Capital Funds Expended**

Local funds	(100%)	\$39,648
State Funds	( 0%)	0
Federal Assistance	( 0%)	0
Other Funds	( 0%)	0
<b>Total Capital Funds Expended</b>		<b>\$39,648</b>

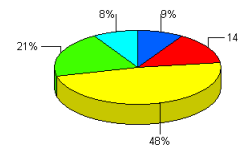
**Summary of Operating Expenses**

Salary, Wages and Benefits	\$2,281,275
Materials and Supplies	310,781
Purchased Transportation	832,924
Other Operating Expenses	281,515
<b>Total Operating Expenses</b>	<b>\$3,706,495</b>
Reconciling Cash Expenditures	\$15,663

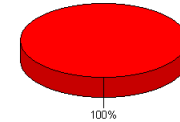
**Vehicles Operated in Maximum Service and Uses of Capital Funds**

	Directly Operated	Purchased Transportation <sup>1</sup>	Revenue Vehicles	Systems and Guideways	Facilities and Stations	Other	Total
Bus	19	0	\$0	\$0	\$39,648	\$0	\$39,648
Demand Response	3	23	\$0	\$0	\$0	\$0	\$0
<b>Total</b>	<b>22</b>	<b>23</b>	<b>\$0</b>	<b>\$0</b>	<b>\$39,648</b>	<b>\$0</b>	<b>\$39,648</b>

**Sources of Operating Funds Expended**



**Sources of Capital Funds Expended**

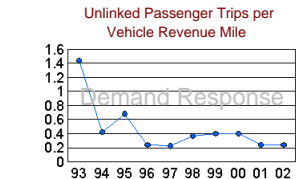
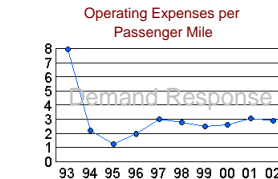
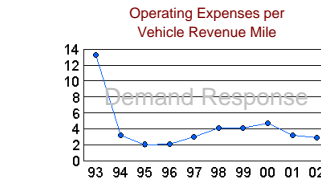
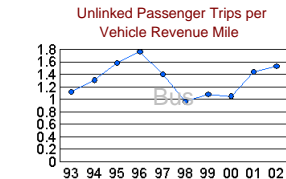
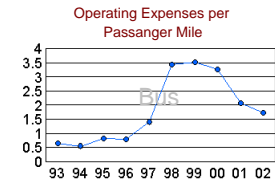
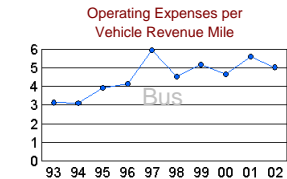


**Modal Characteristics**

	Operating Expenses <sup>2</sup>	Fare Revenues <sup>2</sup>	Uses of Capital Funds	Annual Passenger Miles	Annual Vehicle Revenue Miles	Annual Unlinked Trips	Annual Vehicle Revenue Hours	Fixed Guideway Directional Route Miles	Vehicles Available for Maximum Service	Average Fleet Age in Years	Vehicles Operated in Maximum Service	Peak to Base Ratio	Percent Spares
Bus	\$2,788,525	\$327,827	\$39,648	1,611,046	557,293	847,919	30,053	0.0	19	17.1	19	1.00	0%
Demand Response	\$917,970	\$144,228	\$0	317,574	317,574	74,928	33,021	N/A	26	6.0	26	N/A	0%

**Performance Measures**

	Service Efficiency Operating Expense per Vehicle Revenue Mile	Service Efficiency Operating Expense per Vehicle Revenue Hour	Cost Effectiveness Operating Expense per Passenger Mile	Service Effectiveness Operating Expense per Unlinked Passenger Trip	Service Effectiveness Unlinked Passenger Trips per Vehicle Revenue Mile	Service Effectiveness Unlinked Passenger Trips per Vehicle Revenue Hour
Bus	\$5.02	\$93.15	\$1.73	\$3.29	1.53	28.32
Demand Response	\$2.89	\$27.80	\$2.89	\$12.25	0.24	2.27



<sup>1</sup> Purchased transportation in the agency's report only

<sup>2</sup> Excludes expenses and fare revenues for purchased transportation reported separately by sellers of service