

General Information

Urbanized Area (UZA) Statistics - 2000 Census

Boise City, ID	
Square Miles	109
Population	272,625
Population Ranking out of 465 UZAs	118
Other UZAs Served	

Service Area Statistics

Square Miles	66
Population	185,787

Service Consumption

Annual Passenger Miles	5,254,136
Annual Unlinked Trips	1,159,736
Average Weekday Unlinked Trips	4,347
Average Saturday Unlinked Trips	954
Average Sunday Unlinked Trips	0

Service Supplied

Annual Vehicle Revenue Miles	1,133,114
Annual Vehicle Revenue Hours	86,935
Vehicles Operated in Maximum Service	37
Vehicles Available for Maximum Service	57
Base Period Requirement	14

Financial Information

Fare Revenues Earned \$734,191

Sources of Operating Funds Expended

Fare Revenues	(14%)	\$734,191
Local Funds	(45%)	2,371,747
State Funds	(0%)	0
Federal Assistance	(39%)	2,071,322
Other Funds	(2%)	120,161
Total Operating Funds Expended		\$5,297,421

Sources of Capital Funds Expended

Local funds	(18%)	\$746,939
State Funds	(0%)	0
Federal Assistance	(82%)	3,437,299
Other Funds	(0%)	17,678
Total Capital Funds Expended		\$4,201,916

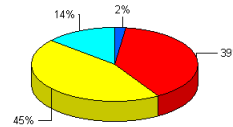
Summary of Operating Expenses

Salary, Wages and Benefits	\$3,711,212
Materials and Supplies	753,187
Purchased Transportation	0
Other Operating Expenses	805,408
Total Operating Expenses	\$5,269,807
Reconciling Cash Expenditures	\$27,614

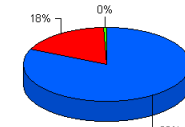
Vehicles Operated in Maximum Service and Uses of Capital Funds

	Directly Operated	Purchased Transportation ¹	Revenue Vehicles	Systems and Guideways	Facilities and Stations	Other	Total
Bus	30	0	\$3,751,267	\$0	\$88,328	\$325,319	\$4,164,914
Demand Response	7	0	\$24,000	\$0	\$9,814	\$3,188	\$37,002
Total	37	0	\$3,775,267	\$0	\$98,142	\$328,507	\$4,201,916

Sources of Operating Funds Expended



Sources of Capital Funds Expended

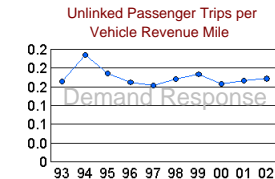
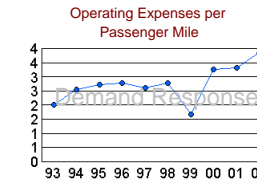
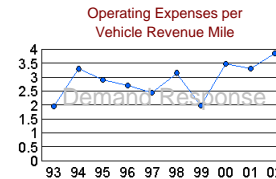
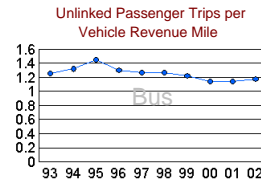
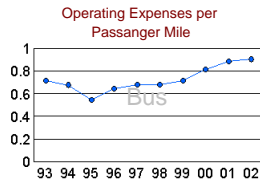
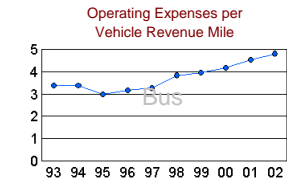


Modal Characteristics

	Operating Expenses ²	Fare Revenues ²	Uses of Capital Funds	Annual Passenger Miles	Annual Vehicle Revenue Miles	Annual Unlinked Trips	Annual Vehicle Revenue Hours	Fixed Guideway Directional Route Miles	Vehicles Available for Maximum Service	Average Fleet Age in Years	Vehicles Operated in Maximum Service	Peak to Base Ratio	Percent Spares
Bus	\$4,595,980	\$700,482	\$4,164,914	5,079,033	958,011	1,128,674	73,551	0.0	49	5.0	30	2.14	63%
Demand Response	\$673,827	\$33,709	\$37,002	175,103	175,103	31,062	13,384	N/A	8	6.6	7	N/A	14%

Performance Measures

	Service Efficiency Operating Expense per Vehicle Revenue Mile	Cost Effectiveness Operating Expense per Passenger Mile	Service Effectiveness Unlinked Passenger Trips per Vehicle Revenue Mile
Bus	\$4.80	\$0.90	1.18
Demand Response	\$3.85	\$3.85	0.18



¹ Purchased transportation in the agency's report only

² Excludes expenses and fare revenues for purchased transportation reported separately by sellers of service