

Kitsap Transit

ID Number: 0020
 www.kitsaptransit.org
 200 Charleston Boulevard
 Bremerton, WA 98312

Chief Executive Officer: Richard M. Hayes,
 Executive Director
 (360)478-6230

System Wide Information

Modal Information

General Information Financial Information Characteristics Demand Ferry

Urbanized Area (UZA) Statistics — 1990 Census
Bremerton, WA

Square Miles	55
Population	112,977
Population Ranking out of 405 UZAs	203

Fare Revenues Earned

Directly Operated	\$2,655,904
Purchased Transportation	0
Total Fare Revenues Earned	\$2,655,904

Sources of Operating Funds Expended

Passenger Fares	\$2,655,904
Local Funds	8,577,051
State Funds	2,936,100
Federal Assistance ¹	0
Other Funds	1,160,721
Total Operating Funds Expended	\$15,329,776

Service Area Statistics

Square Miles	396
Population	229,700

Summary of Operating Expenses

Salaries, Wages and Benefits	\$11,300,232
Materials and Supplies	1,714,806
Purchased Transportation	418,907
Other Operating Expenses	1,540,120
Total Operating Expenses	\$14,974,065

Service Consumption

Annual Passenger Miles	23,027,330
Annual Unlinked Trips	3,866,369
Average Weekday Unlinked Trips	14,236
Average Saturday Unlinked Trips	4,626
Average Sunday Unlinked Trips	2,431

Reconciling Cash Expenditures \$355,711

Service Supplied

Annual Vehicle Revenue Miles	3,223,640
Annual Vehicle Revenue Hours	186,873
Vehicles Available for Maximum Service	224
Vehicles Operated in Maximum Service	169
Base Period Requirement	23

Sources of Capital Funds Expended

Local Funds	\$9,746,976
State Funds	2,259,780
Federal Assistance ²	819,138
Total Capital Funds Expended	\$12,825,894

Vehicles Operated in Maximum Service

Uses of Capital Funds

	Directly Operated	Purchased Transportation		Rolling Stock	Facilities and Other	Total
Bus	78	0	Bus	\$236,170	\$10,220,040	\$10,456,210
Vanpool	54	0	Vanpool	0	0	0
Demand Response	35	0	Demand Response	2,309,908	59,776	2,369,684
Ferry Boat	0	2	Ferry Boat	0	0	0
Total	167	2	Total	\$2,546,078	\$10,279,816	\$12,825,894

	Bus	Demand Response	Vanpool	Ferry Boat
Operating Expense	\$10,430,049	\$3,597,287	\$527,822	\$418,907
Capital Funding	\$10,456,210	\$2,369,684	\$0	\$0
Annual Passenger Miles	17,880,742	1,579,981	3,134,404	432,203
Annual Vehicle Revenue Miles	1,939,703	867,102	385,893	30,942
Annual Unlinked Trips	3,270,802	200,357	127,530	267,680
Average Weekday Unlinked Trips	11,889	734	585	1,028
Annual Vehicle Revenue Hours	114,164	55,469	12,358	4,882
Fixed Guideway Directional Route Miles	0.0	N/A	N/A	5.7
Vehicles Available for Maximum Service	104	51	65	4
Average Fleet Age in Years	17.0	4.4	6.3	35.8
Vehicles Operated in Maximum Service	78	35	54	2
Peak to Base Ratio	3.5	N/A	N/A	2.0
Percent Spares	33%	46%	20%	100%
Incidents	17	12	2	0
Patron Fatalities	0	0	0	0

Performance Measures

Service Efficiency

Operating Expense per Vehicle Revenue Mile	\$5.38	\$4.15	\$1.37	\$13.54
Operating Expense per Vehicle Revenue Hour	\$91.36	\$64.85	\$42.71	\$85.81

Cost Effectiveness

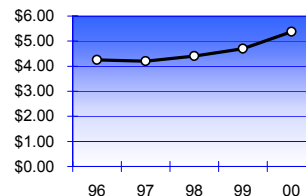
Operating Expense per Passenger Mile	\$0.58	\$2.28	\$0.17	\$0.97
Operating Expense per Unlinked Passenger Trip	\$3.19	\$17.95	\$4.14	\$1.56

Service Effectiveness

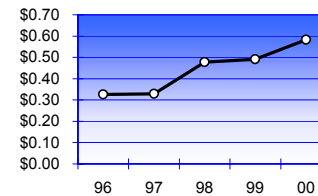
Unlinked Passenger Trips per Vehicle Revenue Mile	1.69	0.23	0.33	8.65
Unlinked Passenger Trips per Vehicle Revenue Hour	28.65	3.61	10.32	54.83

Bus

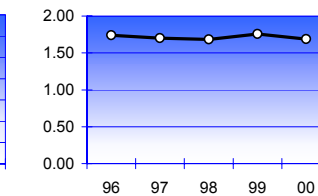
Operating Expense per Vehicle Revenue Mile



Operating Expense per Passenger Mile

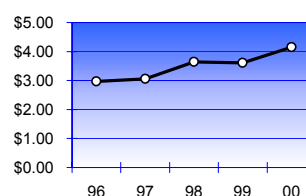


Passenger Trips per Vehicle Revenue Mile

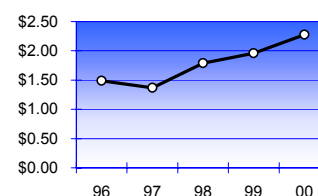


Demand Response

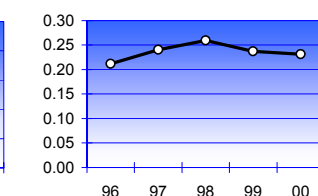
Operating Expense per Vehicle Revenue Mile



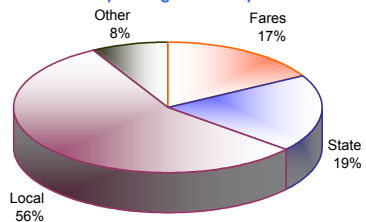
Operating Expense per Passenger Mile



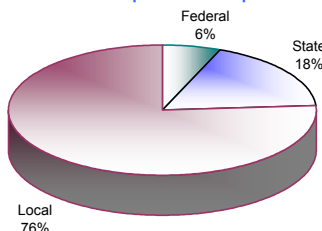
Passenger Trips per Vehicle Revenue Mile



Sources of Operating Funds Expended



Sources of Capital Funds Expended



¹ Excludes Federal capital funds used to pay for operating expenses.

² Includes Federal capital funds used to pay for operating expenses.