

# Pocatello Urban Transit (Pocatello)

P.O. Box 4169  
 Pocatello, ID 83205-4169  
 (208)234-6248

Chief Executive Officer: Ronald D. Binggeli,  
 Director of Public Transit  
 ID Number: 0022

## System Wide Information

## Modal Information

### General Information

#### Urbanized Area (UZA) Statistics - 1990 Census

<b>Pocatello, ID</b>	
Square Miles	31
Population	53,903
Population Ranking Out of 405 UZA's	376

#### Service Area Statistics

Square Miles	32
Population	53,392

#### Service Consumption

Annual Passenger Miles	1,711,138
Annual Unlinked Trips	367,000
Average Weekday Unlinked Trips	1,384
Average Saturday Unlinked Trips	324
Average Sunday Unlinked Trips	0

#### Service Supplied

Annual Vehicle Revenue Miles	324,890
Annual Vehicle Revenue Hours	26,101
Total Fleet	15
Vehicles Operated in Maximum Service	11
Base Period Requirement	4

#### Vehicles Operated in Maximum Service

	Directly Operated	Purchased Transportation
Bus	8	0
Demand Response	3	0
<b>Total</b>	<b>11</b>	<b>0</b>

### Financial Information

#### Sources of Operating Funds Expended

Passenger Fares	\$118,717
Local Funds	290,670
State Funds	22,500
Federal Assistance	196,397
Other Funds	11,533
<b>Total Operating Funds Expended</b>	<b>\$639,817</b>

#### Summary of Operating Expenses

Salaries/Wages/Benefits	\$438,434
Materials & Supplies	118,653
Purchased Transportation	0
Other Operating Expenses	67,052
<b>Total Operating Expenses</b>	<b>\$624,139</b>

Reconciling Cash Expenditures	\$15,678
-------------------------------	----------

#### Sources of Capital Funds Expended

Local Funds	\$15,124
State Funds	0
Federal Assistance	60,496
<b>Total Capital Funds Expended</b>	<b>\$75,620</b>

#### Uses of Capital Funds

	Rolling Stock	Facilities and Other	Total
Bus	\$58,470	\$8,505	\$66,975
Demand Response	8,645	0	8,645
<b>Total</b>	<b>\$67,115</b>	<b>\$8,505</b>	<b>\$75,620</b>

### Characteristics

	Bus	Demand Response
Operating Expense	\$475,955	\$148,184
Capital Funding	\$66,975	\$8,645
Annual Passenger Miles	1,637,674	73,464
Annual Vehicle Revenue Miles	251,724	73,166
Annual Unlinked Trips	344,268	22,732
Average Weekday Unlinked Trips	1,296	88
Annual Vehicle Revenue Hours	19,062	7,039
Fixed Guideway Directional Route Miles	0.0	N/A
Total Fleet	11	4
Average Fleet Age in Years	15.6	5.4
Vehicles Operated in Maximum Service	8	3
Peak to Base Ratio	2.0	N/A
Percent Spares	38%	33%

### Performance Measures

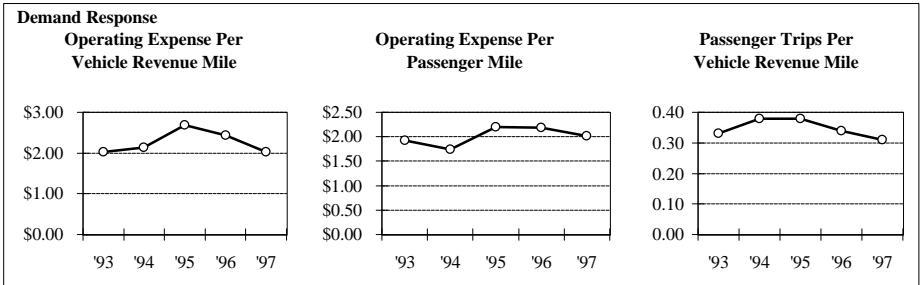
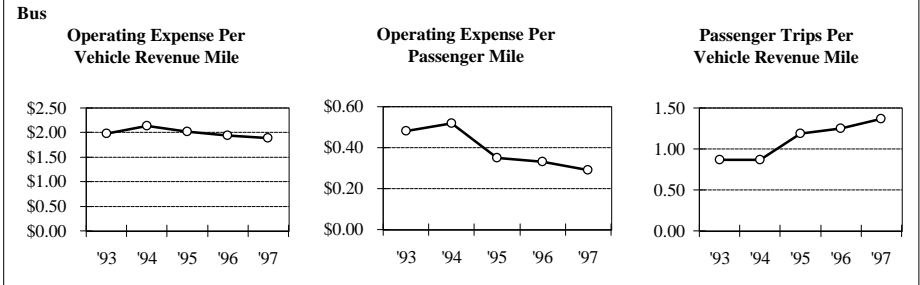
Service Efficiency	Bus	Demand Response
Operating Expense/Vehicle Revenue Mile	\$1.89	\$2.03
Operating Expense/Vehicle Revenue Hour	\$24.97	\$21.05

### Cost Effectiveness

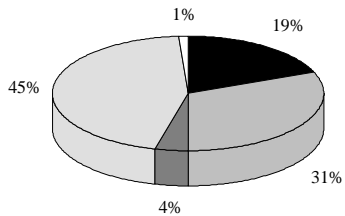
Operating Expense/Passenger Mile	\$0.29	\$2.02
Operating Expense/Unlinked Passenger Trip	\$1.38	\$6.52

### Service Effectiveness

Unlinked Passenger Trips/Vehicle Revenue Mile	1.37	0.31
Unlinked Passenger Trips/Vehicle Revenue Hour	18.06	3.23



Sources of Operating Funds Expended



Sources of Capital Funds Expended

