

# Pierce Transit

3701 96th Street, S.W.  
Tacoma, WA 98499-0070  
(253)581-8010

Chief Executive Officer: Don S. Monroe,  
Executive Director  
ID Number: 0003

## System Wide Information

## Modal Information

### General Information

#### Urbanized Area (UZA) Statistics - 1990 Census

Tacoma, WA	
Square Miles	233
Population	497,210
Population Ranking Out of 405 UZA's	60

#### Service Area Statistics

Square Miles	275
Population	616,285

#### Service Consumption

Annual Passenger Miles	92,122,400
Annual Unlinked Trips	13,927,598
Average Weekday Unlinked Trips	45,824
Average Saturday Unlinked Trips	25,936
Average Sunday Unlinked Trips	15,686

#### Service Supplied

Annual Vehicle Revenue Miles	11,481,986
Annual Vehicle Revenue Hours	654,362
Total Fleet	477
Vehicles Operated in Maximum Service	384
Base Period Requirement	98

#### Vehicles Operated in Maximum Service

	Directly Operated	Purchased Transportation		Rolling Stock	Facilities and Other	Total
Bus	151	0	Bus	\$5,070,439	\$9,857,640	\$14,928,079
Vanpool	127	0	Vanpool	651,531	0	651,531
Demand Response	28	78	Demand Response	428,930	0	428,930
<b>Total</b>	<b>306</b>	<b>78</b>	<b>Total</b>	<b>\$6,150,900</b>	<b>\$9,857,640</b>	<b>\$16,008,540</b>

### Financial Information

#### Sources of Operating Funds Expended

Passenger Fares	\$7,973,901
Local Funds	20,257,447
State Funds	14,684,672
Federal Assistance	1,628,185
Other Funds	2,590,212
<b>Total Operating Funds Expended</b>	<b>\$47,134,417</b>

#### Summary of Operating Expenses

Salaries/Wages/Benefits	\$33,389,233
Materials & Supplies	4,273,057
Purchased Transportation	4,770,572
Other Operating Expenses	3,814,512
<b>Total Operating Expenses</b>	<b>\$46,247,374</b>

Reconciling Cash Expenditures	\$887,043
-------------------------------	-----------

#### Sources of Capital Funds Expended

Local Funds	\$1,583,982
State Funds	1,480,984
Federal Assistance	12,943,574
<b>Total Capital Funds Expended</b>	<b>\$16,008,540</b>

#### Uses of Capital Funds

	Rolling Stock	Facilities and Other	Total
Bus	\$5,070,439	\$9,857,640	\$14,928,079
Vanpool	651,531	0	651,531
Demand Response	428,930	0	428,930
<b>Total</b>	<b>\$6,150,900</b>	<b>\$9,857,640</b>	<b>\$16,008,540</b>

### Characteristics

	Bus	Demand Response	Vanpool
Operating Expense	\$35,003,984	\$10,387,158	\$856,232
Capital Funding	\$14,928,079	\$428,930	\$651,531
Annual Passenger Miles	75,066,079	3,072,071	13,984,250
Annual Vehicle Revenue Miles	7,433,599	2,290,887	1,757,500
Annual Unlinked Trips	13,192,726	338,372	396,500
Average Weekday Unlinked Trips	43,091	1,147	1,586
Annual Vehicle Revenue Hours	476,554	141,558	36,250
Fixed Guideway Directional Route Miles	19.8	N/A	N/A
Total Fleet	193	135	149
Average Fleet Age in Years	7.2	3.7	3.2
Vehicles Operated in Maximum Service	151	106	127
Peak to Base Ratio	1.5	N/A	N/A
Percent Spares	28%	27%	17%

### Performance Measures

#### Service Efficiency

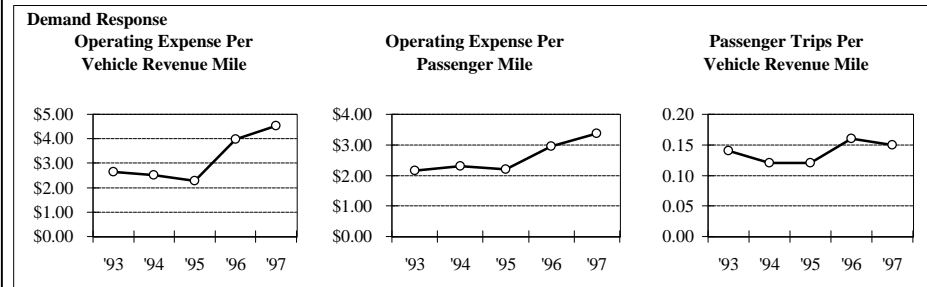
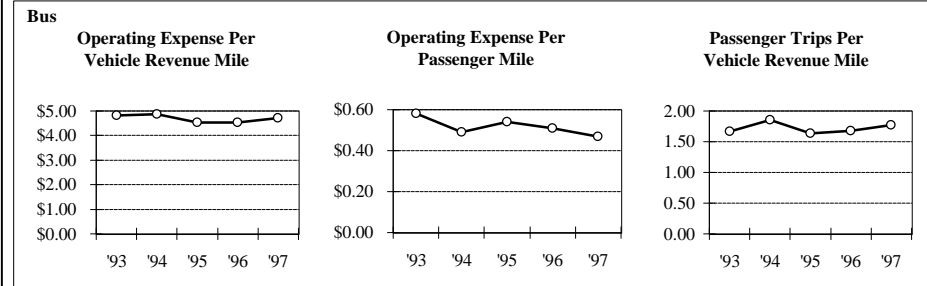
Operating Expense/Vehicle Revenue Mile	\$4.71	\$4.53	\$0.49
Operating Expense/Vehicle Revenue Hour	\$73.45	\$73.38	\$23.62

#### Cost Effectiveness

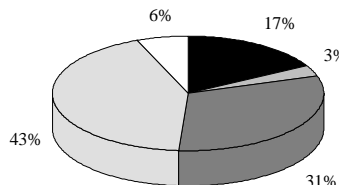
Operating Expense/Passenger Mile	\$0.47	\$3.38	\$0.06
Operating Expense/Unlinked Passenger Trip	\$2.65	\$30.70	\$2.16

#### Service Effectiveness

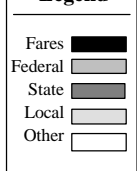
Unlinked Passenger Trips/Vehicle Revenue Mile	1.77	0.15	0.23
Unlinked Passenger Trips/Vehicle Revenue Hour	27.68	2.39	10.94



Sources of Operating Funds Expended



Legend



Sources of Capital Funds Expended

