

Snohomish County Transportation Benefit Area Corporation (Community Transit)

1133 164th Street, S.W.
Lynnwood, WA 98037
(206)348-7100

Chief Executive Officer: Jovce F. Olson.
Executive Director
ID Number: 0029

System Wide Information

Modal Information

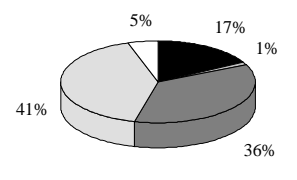
General Information	Financial Information					
Urbanized Area (UZA) Statistics - 1990 Census						
Seattle, WA						
Square Miles	588					
Population	1,744,086					
Population Ranking Out of 405 UZ's	18					
Service Area Statistics						
Square Miles	1,255					
Population	357,000					
Service Consumption						
Annual Passenger Miles	99,051,299					
Annual Unlinked Trips	6,897,264					
Average Weekday Unlinked Trips	24,281					
Average Saturday Unlinked Trips	7,171					
Average Sunday Unlinked Trips	4,298					
Service Supplied						
Annual Vehicle Revenue Miles	7,776,138					
Annual Vehicle Revenue Hours	328,907					
Total Fleet	430					
Vehicles Operated in Maximum Serv	343					
Base Period Requirement	62					
Vehicles Operated in Maximum Service						
	Directly Operated Transportation	Purchased Transportation		Rolling Stock	Facilities and Other	Total
Bus	108	76	Bus	\$0	\$726,157	\$726,157
Vanpool	159	0	Vanpool	838,065	0	838,065
Demand Response	0	0	Demand Respon	860,598	0	860,598
Total	267	76	Total	\$1,698,663	\$726,157	\$2,424,820

Characteristics	Bus	Vanpool
Operating Expense	\$33,790,422	\$768,861
Capital Funding	\$726,157	\$838,065
Annual Passenger Miles	83,292,799	15,758,500
Annual Vehicle Revenue Miles	6,031,731	1,744,407
Annual Unlinked Trips	6,518,838	378,426
Average Weekday Unlinked Trips	22,817	1,464
Annual Vehicle Revenue Hours	285,373	43,534
Fixed Guideway Directional Route Miles	67.4	N/A
Total Fleet	241	189
Average Fleet Age in Years	8.4	1.9
Vehicles Operated in Maximum Service	184	159
Peak to Base Ratio	3.0	N/A
Percent Spares	31%	19%
Performance Measures		
Service Efficiency		
Operating Expense/Vehicle Revenue Mile	\$5.60	\$0.44
Operating Expense/Vehicle Revenue Hour	\$118.41	\$17.66
Cost Effectiveness		
Operating Expense/Passenger Mile	\$0.41	\$0.05
Operating Expense/Unlinked Passenger Trip	\$5.18	\$2.03
Service Effectiveness		
Unlinked Passenger Trips/Vehicle Revenue M	1.08	0.22
Unlinked Passenger Trips/Vehicle Revenue H	22.84	8.69

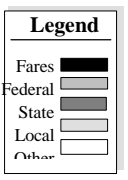
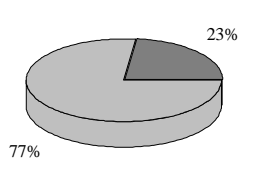
Bus		
Operating Expense Per Vehicle Revenue Mile	Operating Expense Per Passenger Mile	Passenger Trips Per Vehicle Revenue Mile

Vanpool		
Operating Expense Per Vehicle Revenue Mile	Operating Expense Per Passenger Mile	Passenger Trips Per Vehicle Revenue Mile

Sources of Operating Funds Expended



Sources of Capital Funds Expended



Source: 1996 National Transit Database