

Olympia-Intercity Transit (IT)

526 Pattison Southeast
Olympia, WA 98507-0659
(360)786-8585

Chief Executive Officer: Michael Harbour.
General Manager
ID Number: 0019

System Wide Information

Modal Information

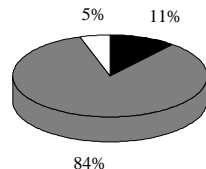
General Information	Financial Information		
Urbanized Area (UZA) Statistics - 1990 Census			
Olympia, WA			
Square Miles	55		
Population	95,471		
Population Ranking Out of 405 UZ's	235		
Service Area Statistics			
Square Miles	89		
Population	189,200		
Service Consumption			
Annual Passenger Miles	17,907,512		
Annual Unlinked Trips	3,724,485		
Average Weekday Unlinked Trips	12,527		
Average Saturday Unlinked Trips	7,099		
Average Sunday Unlinked Trips	2,627		
Service Supplied			
Annual Vehicle Revenue Miles	4,088,536		
Annual Vehicle Revenue Hours	258,247		
Total Fleet	147		
Vehicles Operated in Maximum Serv	118		
Base Period Requirement	50		
Vehicles Operated in Maximum Service			
	Directly Operated Transportation	Purchased Transportation	
Bus	69	0	
Vanpool	31	0	
Demand Response	18	0	
Total	118	0	
Sources of Operating Funds Expended			
Passenger Fares	\$1,584,932		
Local Funds	48,789		
State Funds	12,301,616		
Federal Assistance	0		
Other Funds	709,902		
Total Operating Funds Expended	\$14,645,239		
Sources of Capital Funds Expended			
Local Funds	\$0		
State Funds	1,307,171		
Federal Assistance	1,450,353		
Total Capital Funds Expended	\$2,757,524		
Summary of Operating Expenses			
Salaries/Wages/Benefits	\$11,262,277		
Materials & Supplies	1,396,173		
Purchased Transportation	0		
Other Operating Expenses	1,943,788		
Total Operating Expenses	\$14,602,238		
Reconciling Cash Expenditures	\$43,001		
Uses of Capital Funds			
	Rolling Stock	Facilities and Other	Total
Bus	\$2,309,755	\$447,769	\$2,757,524
Vanpool	0	0	0
Demand Respon	0	0	0
Total	\$2,309,755	\$447,769	\$2,757,524

Characteristics	Bus	Demand Response	Vanpool
Operating Expense	\$11,672,132	\$2,777,231	\$152,875
Capital Funding	\$2,757,524	\$0	\$0
Annual Passenger Miles	12,887,022	635,186	4,385,304
Annual Vehicle Revenue Miles	3,000,816	642,688	445,032
Annual Unlinked Trips	3,445,877	158,404	120,204
Average Weekday Unlinked Trips	11,576	474	477
Annual Vehicle Revenue Hours	192,249	53,902	12,096
Fixed Guideway Directional Route Miles	0.0	N/A	N/A
Total Fleet	87	26	34
Average Fleet Age in Years	7.3	3.3	3.3
Vehicles Operated in Maximum Service	69	18	31
Peak to Base Ratio	1.4	N/A	N/A
Percent Spares	26%	44%	10%
Performance Measures			
Service Efficiency			
Operating Expense/Vehicle Revenue Mile	\$3.89	\$4.32	\$0.34
Operating Expense/Vehicle Revenue Hour	\$60.71	\$51.52	\$12.64
Cost Effectiveness			
Operating Expense/Passenger Mile	\$0.91	\$4.37	\$0.03
Operating Expense/Unlinked Passenger Trip	\$3.39	\$17.53	\$1.27
Service Effectiveness			
Unlinked Passenger Trips/Vehicle Revenue M	1.15	0.25	0.27
Unlinked Passenger Trips/Vehicle Revenue H	17.92	2.94	9.94

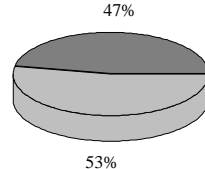
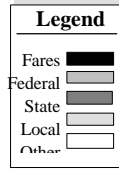
Bus		
Operating Expense Per Vehicle Revenue Mile	Operating Expense Per Passenger Mile	Passenger Trips Per Vehicle Revenue Mile

Demand Response		
Operating Expense Per Vehicle Revenue Mile	Operating Expense Per Passenger Mile	Passenger Trips Per Vehicle Revenue Mile

Sources of Operating Funds Expended



Sources of Capital Funds Expended



Source: 1996 National Transit Database