

Reinforcing the I-5 transmission highway

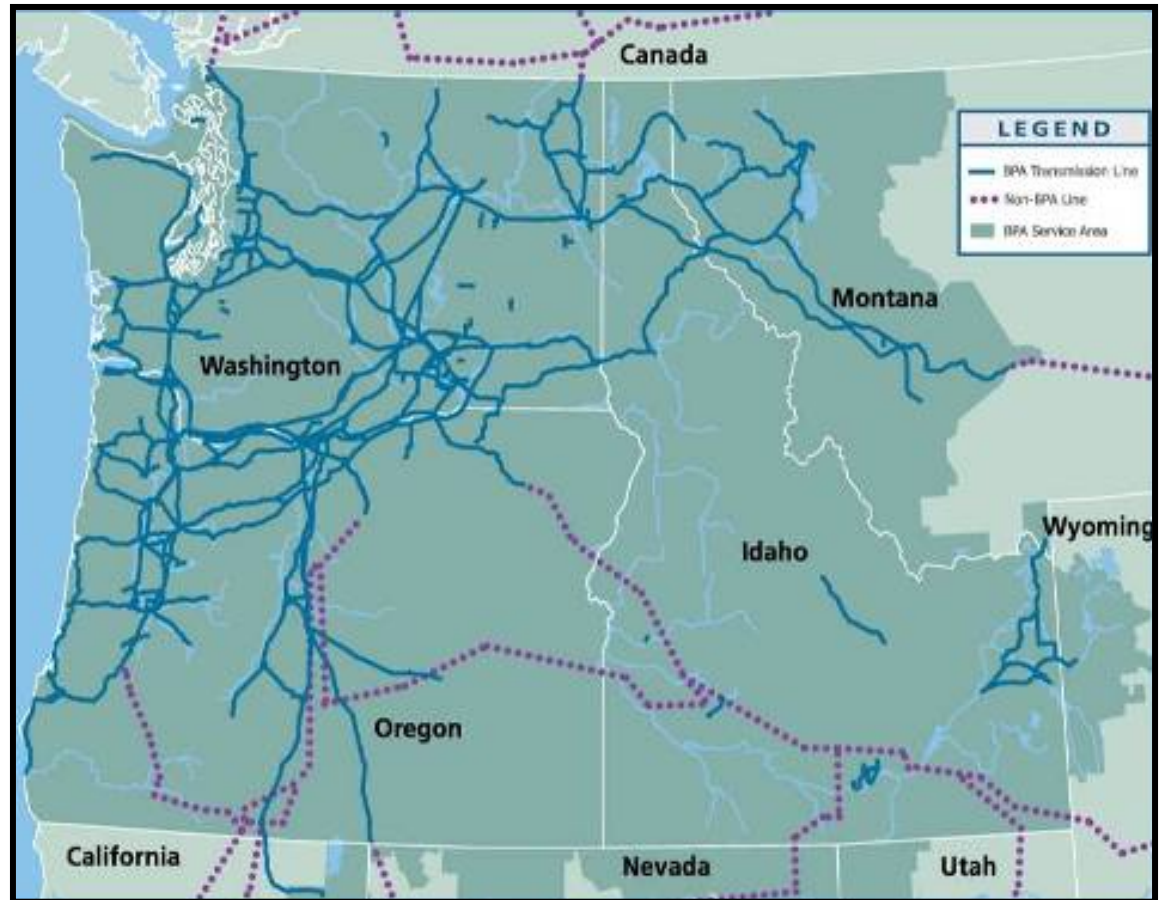
I-5 Corridor Reinforcement Project:
What it is and why we need it

August 2010



Bonneville Power Administration

- Not-for-profit federal agency
- Provides 1/3 of Northwest's electricity
- Owns & operates 3/4 of regional high-voltage transmission grid

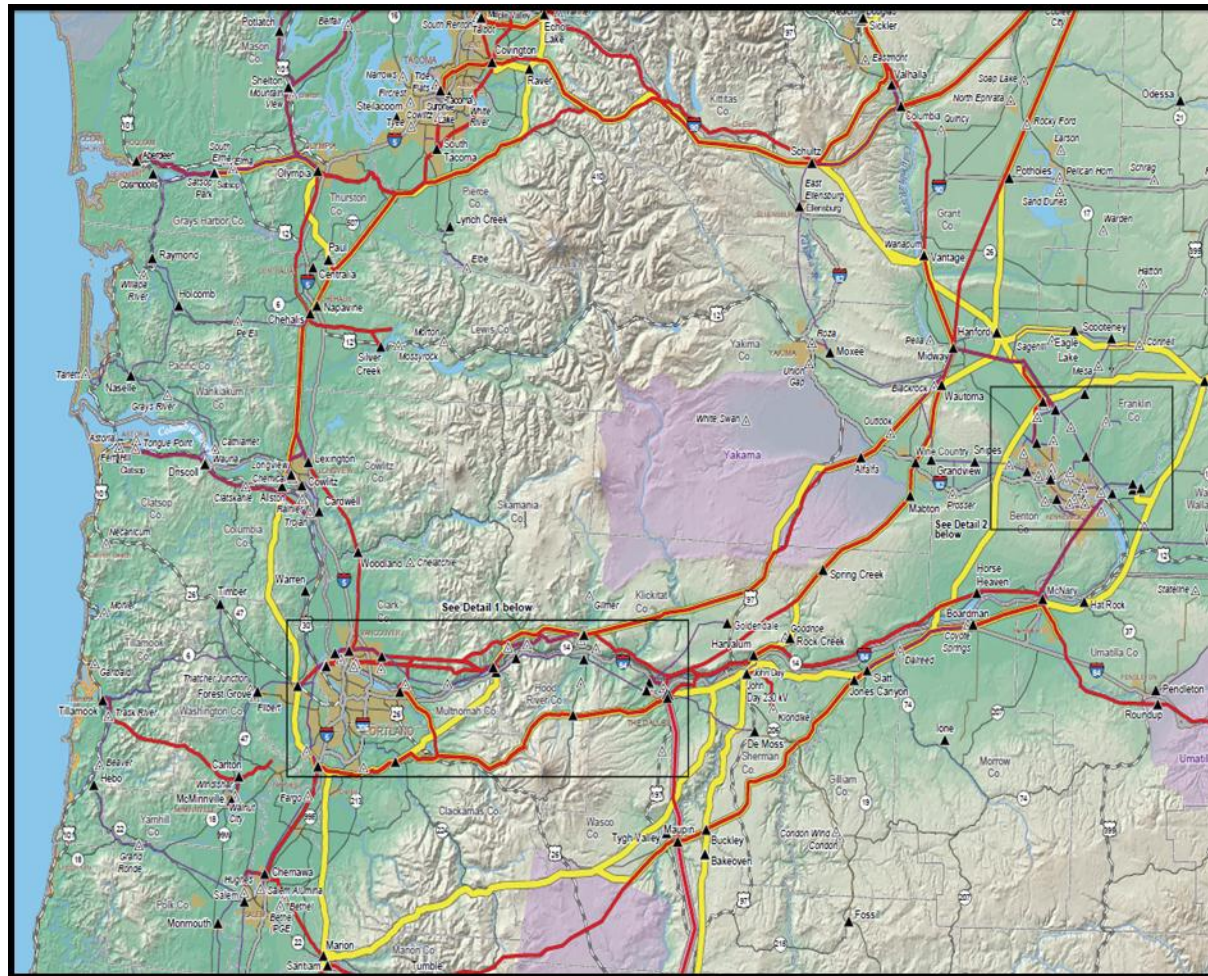


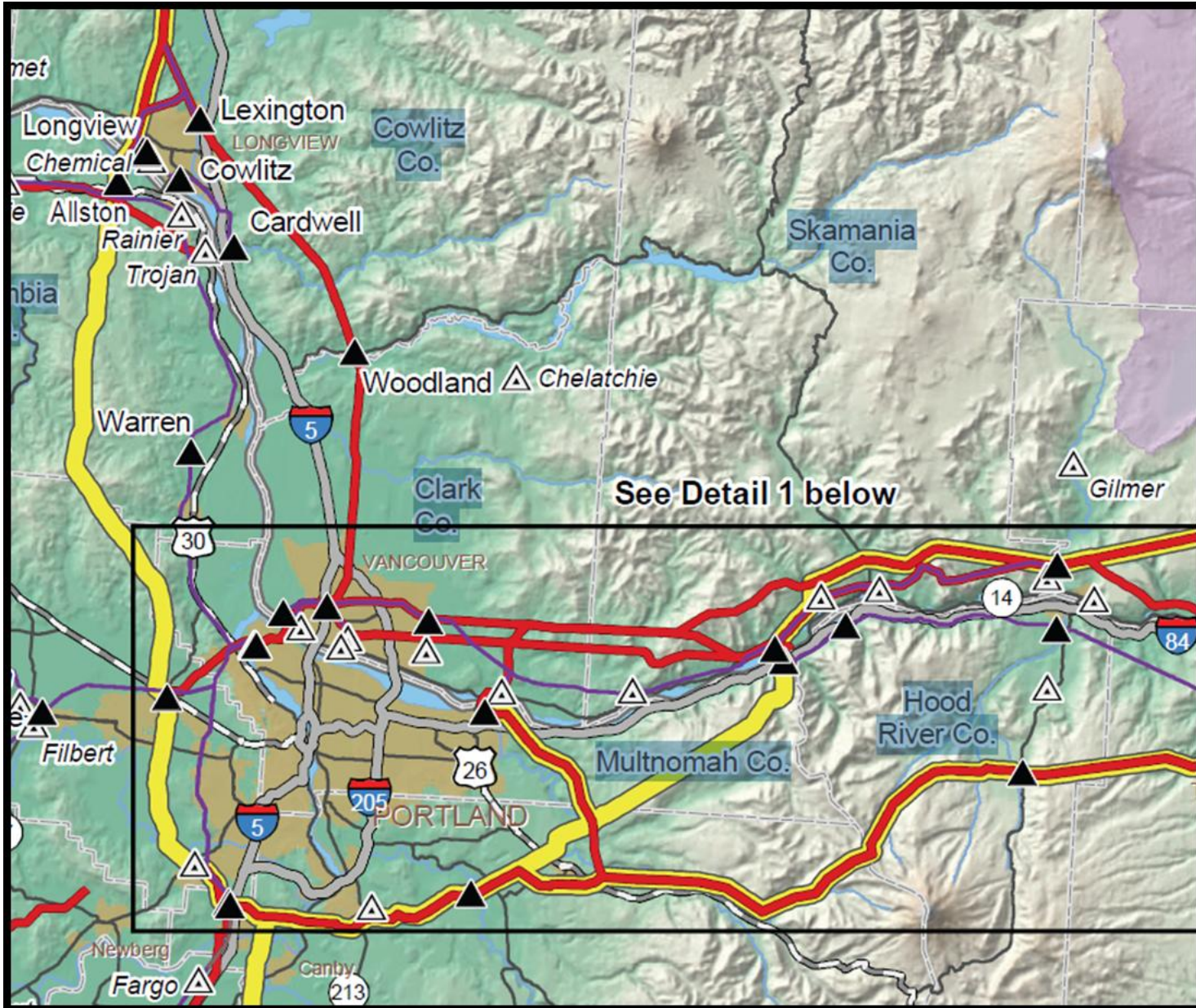
BPA's commitment

- High reliability
- Low rates
- Environmental stewardship
- Accountability to the region



BPA's transmission grid





We've taken action

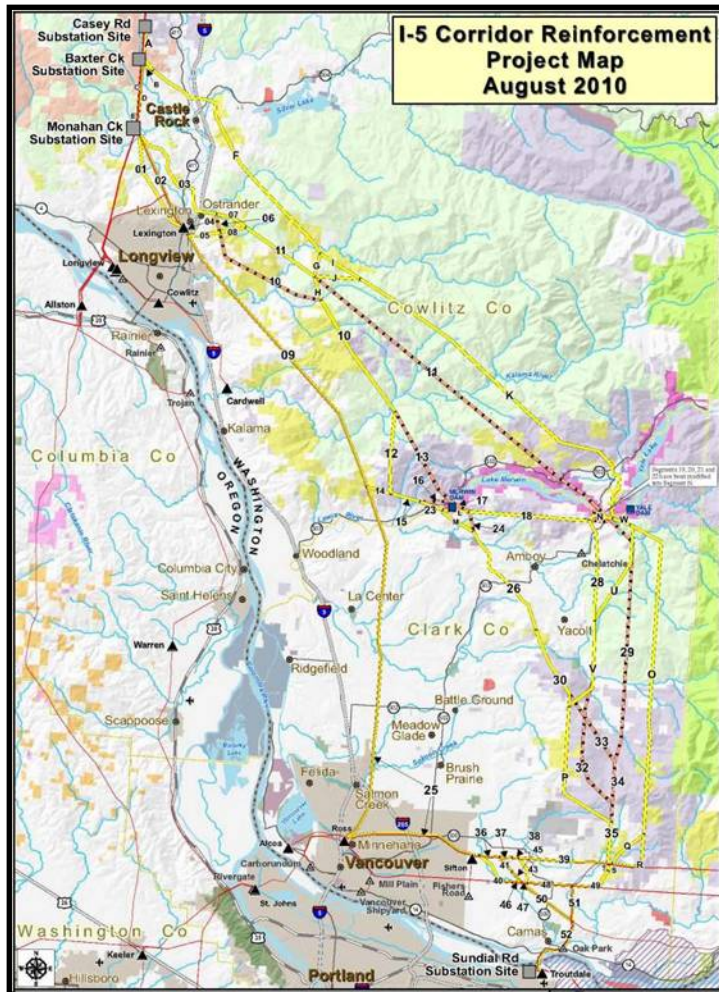


- **Conservation:** The Northwest is a national leader in capturing energy efficiency. In the past 30 years, we have captured 3,700 aMW of conservation, which is enough to meet more than half of the local power needs, our future goals are even more aggressive
- **Technology:** BPA is using several innovative, interim solutions to further reduce congestion

Project need

- Local energy demand growth and requests for transmission service
- By 2016 system reaches critical thermal limits threatening our ability to keep the lights on
- By 2018 system reaches critical voltage limits compounding matters and posing an even greater threat

About the Project



- 500-kilovolt transmission
- New substations at
 - Castle Rock, Wash.
 - Troutdale, Ore.
- 70 miles apart
- Many route segments

Benefits of a new line

- Keeps the lights on for the hottest days and coldest nights
- Promotes clean, green renewable energy and brings it from source to switch
- Gives local utilities:
 - Access to affordable and reliable power
 - Access to energy markets to sell excess electricity, helping keep local rates lower

Factors we consider

- Electrical needs for reliability and safety
 - Will it work?
- Impact to human and natural environment
 - homes, businesses, schools, etc.
 - fish, wildlife, vegetation, soils, water, etc.
- Economic and social environment
 - property values, views, cultural resources, recreation, etc.

Decision timeline

- Fall/Winter 2010
 - Identify center lines and rights-of-way for proposed route segments, notify the public
- 2010-2011
 - Refine project design
 - Post monthly updates to project website
 - Prepare draft environmental impact statement
 - Release draft EIS in fall 2011
 - Comment period and public meetings on draft EIS
- 2011-2012
 - Review comments and finalize the EIS
- Late 2012 or early 2013
 - Publish final EIS and announce agency decision
 - Construction could begin as early as 2013

We will continue to listen

- Your feedback helps shape the routes we consider and the best locations for the towers and access roads
- We appreciate and rely on your input
- We encourage you to stay engaged and involved

A stylized blue graphic of a landscape. In the background, there are horizontal lines representing a sky or a road. In the middle ground, there are rolling hills and a person standing on a peak, holding a large light or lantern. The foreground shows a winding path or road. The entire graphic is rendered in shades of blue.

**Working with you to
keep the lights on**

www.bpa.gov/go/i5