

I-5 Corridor Reinforcement Project

Project Update

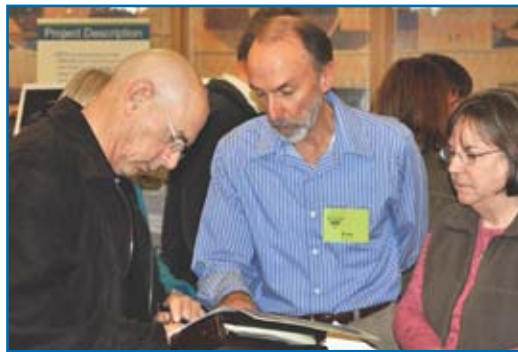
November 2010



Draft tower, line locations available

BPA has released its preliminary designs showing tower and right-of-way locations. Information is now available online, allowing landowners to see where the proposed power line might be in relation to their property. See page 3 for more information on how you can access this information online through interactive maps or how to contact the Bonneville Power Administration for a printed copy if you do not have Internet access. ■

We want to hear from you



When BPA proposes building a power line, we evaluate how people, the environment and other factors could be impacted by the project. Now that you can see where we might place the

right-of-way and individual towers, you have the opportunity to help us further understand how the proposed line could affect people, the natural environment, public and private land use, health and safety, visual quality and other important considerations.

Even if you have already commented on the project in the past, we would appreciate your additional input. BPA is interested in specific

(continued on page 2)

Segment F widened

In October, BPA expanded the notification area for Segment F near Castle Rock, Wash. This refinement is the result of recent field work in the area and input from the public urging us to avoid impact to homes as much as possible. We are evaluating a possible right-of-way through undeveloped land and are following our standard practice to notify people who own property nearby. The Segment F notification area, or buffer, now includes 29 new land parcels and 22 new property owners. The fact that we have expanded the notification area on this segment does not increase the likelihood that route segment F will be selected. The initial design for this segment is now available with all other segments in our maps online. ■

The I-5 Corridor Project is a 500-kilovolt transmission line that the Bonneville Power Administration proposes to build to reinforce the high-voltage power grid in southwest Washington.



We want to hear from you

(continued from page 1)

information you may have about the preliminary locations we have identified as potential sites for the right-of-way and towers. For example, we would like to hear from you if you are aware of sensitive plants and animals in the area or social and economic impacts you are concerned about.

Over the past year, BPA has identified dozens of route segments that could be combined in various ways to meet the electrical needs of the project. The notification areas for some of the route segments were as much as half a mile to a mile wide. As a result, thousands of landowners were notified that they could potentially be affected by the project. Until now, we didn't have the design information to let individual property owners or interested parties know where the towers and right-of-way might actually be located. We have just recently completed development of this information. Although this information is preliminary, and there could be changes to the locations as we learn more, we wanted to share project details as they are developed.

Please note that if a decision is made to build the project, a final route would be selected that would use only a subset of the many route segments that have been identified. Accordingly, even if a decision is made to build, most route segments and the landowners along them ultimately would not be affected by the proposed project. ■

What's happening now?

We have started our environmental review to evaluate how people, the environment and other factors could be impacted by the project. This review provides us the information we need to make a well-informed decision about whether, and where, to build a new line, access roads and substations. Our project schedule calls for the draft environmental impact statement to be completed in fall 2011 when it will be released for review and public comment. The EIS will also propose mitigation measures that would avoid or reduce impacts and will also consider a "no action" alternative.

Over the next few months, we will continue to study and evaluate how people, the environment and other factors could be impacted by the various route segments that have been identified for the proposed project. We also expect to combine segments shown on the existing project map into several

route alternatives that will be studied in the draft EIS we are preparing. The EIS process will provide us the information we need to make a well-informed decision about whether, and where, to build a new line and substations.

In some areas, new access roads would need to be constructed. Information about access road locations is not yet available; however, we will add that information to the maps as it is developed.

You may see BPA staff or contractors in the project area as we evaluate the segments. BPA activities could include surveys conducted on foot where we have legal access or by air.

As we continue our review, some of the preliminary route alternatives may be revised based on what we learn from our surveys, studies and input from you. We will provide you updates as these decisions are made. ■

Information, comments, requests

You can find information, submit comments and ask for our help in a number of ways. For example, if you do not have internet access, or if you prefer that we mail you the materials mentioned in this update, just call us or write us with your request.

All input received, by any method identified below, will become part of the public record for the project and receive consideration as we complete our environmental review and decision-making process.

Submitting comments early will increase our ability to include and consider your input as we prepare the draft EIS.

ONLINE:

www.bpa.gov/go/i-5

E-MAIL:

I-5@bpa.gov

WRITE:

I-5 Corridor Reinforcement Project,
P.O. Box 9250, Portland, OR 97207

PHONE

800-230-6593 [VOICE MAIL]

FAX:

888-315-4503

We are committed to keeping all parties — from individual landowners to state agencies and elected officials — fully informed every step of the way by sharing information, providing timely updates and notifying you of changes. ■

Using the online interactive maps

The best way to see the preliminary tower and right-of-way locations is to look at our interactive maps online. You can find a specific location in relation to the proposed segments by clicking on Search at the top right of the page, entering the address or intersection and clicking on Go. Use the tools on the right of the map to zoom in and out of the area displayed or to drag the map to an area you would like to view.

NOTIFICATION BUFFER: The original study area shaded in yellow cross-hatch shows where a transmission line could possibly be sited. This buffer allowed BPA to identify land parcels, whose owners were added to the project mail list.

Although preliminary tower locations and subsequent rights-of-way have been identified, this buffer area is still under consideration to accommodate future design changes as they occur.

PARCELS: Individual property parcels are outlined in white.

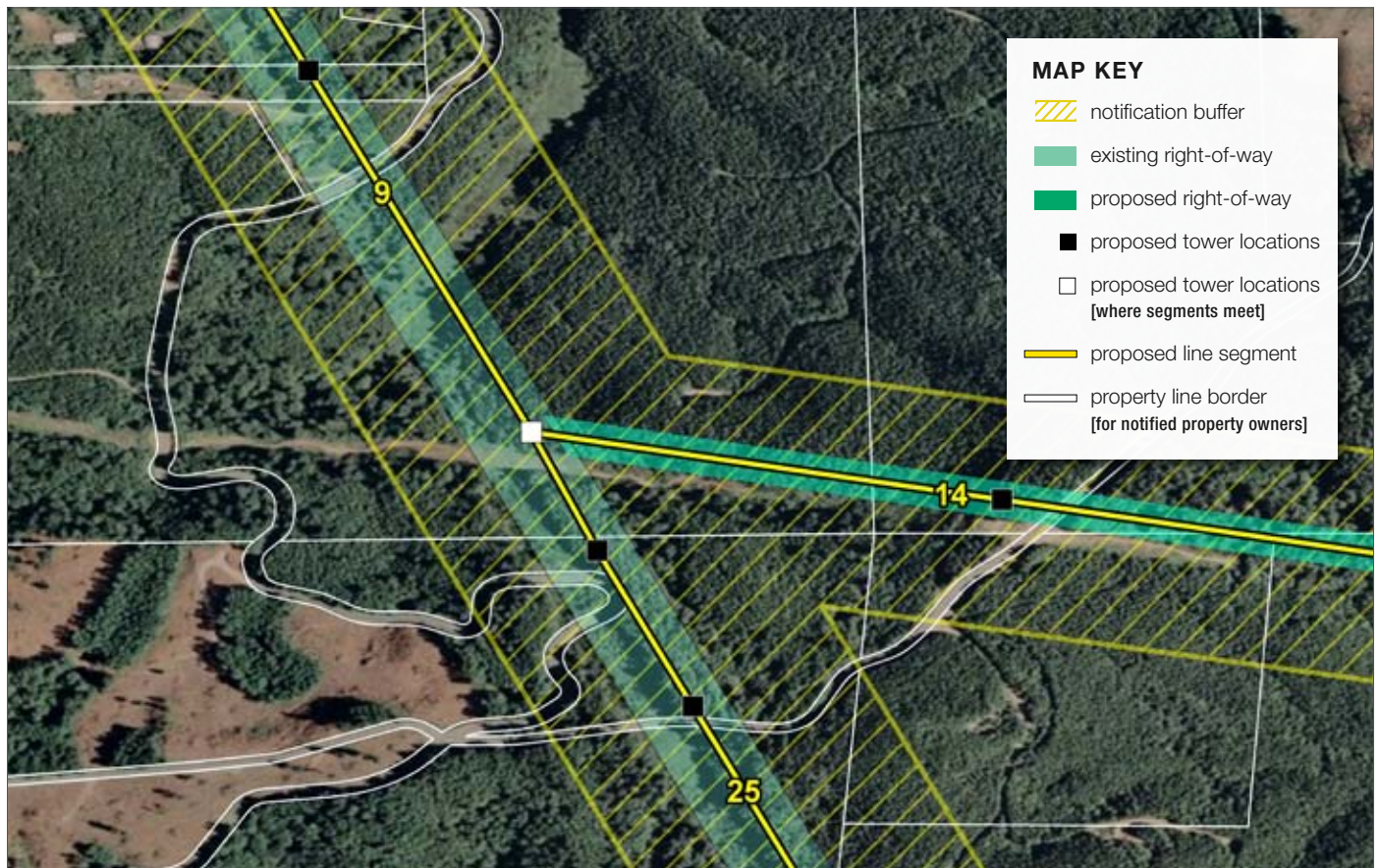
RIGHT-OF-WAY: Most 500-kilovolt transmission lines and towers require 150 feet of right-of-way and must be accessible for construction and maintenance. This is represented by green on the maps. A darker green indicates areas where BPA might need to purchase land or easements. Lighter green shows existing right-of-way.

TOWERS: Preliminary locations for transmission towers, which

average about 150 feet tall, are marked by black or white squares on the maps. ■

Other ways to see maps

If you do not have Internet access or have questions, feel free to call or write us with your request. Give us your name, phone number, mailing and property addresses and we will send you a printed map. If you have questions or would like assistance, let us know how we can help. [SEE PAGE 2 FOR CONTACT INFORMATION.]



This is an example of how the interactive maps will look online.

www.bpa.gov

BONNEVILLE POWER ADMINISTRATION

DOE/BP-4212 • NOVEMBER 2010