

SOUTHEAST INFORMATION OFFICE
Atlanta, Ga.

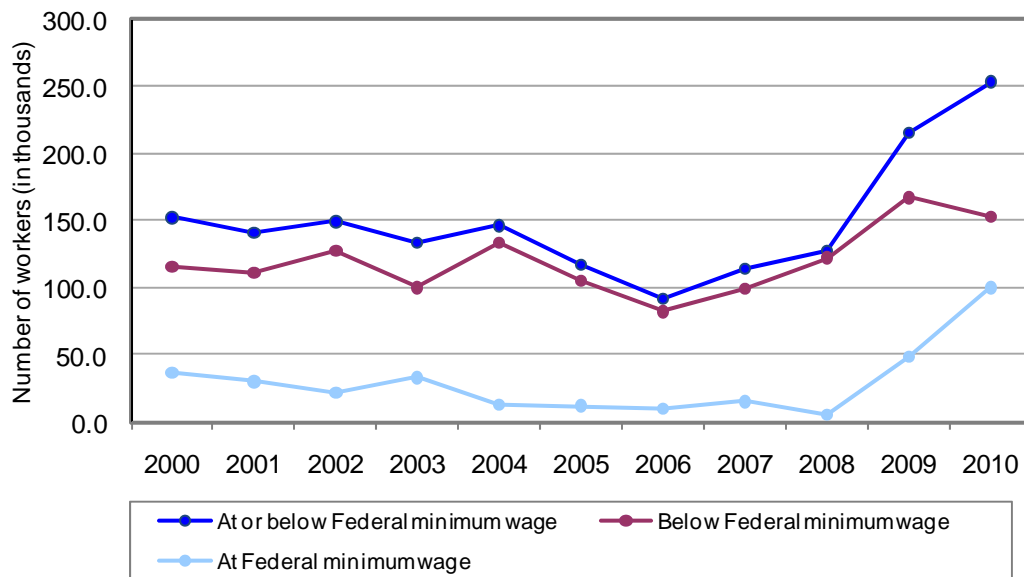
For release: Wednesday, March 23, 2011

Technical information: (404) 893-4222 • BLSinfoAtlanta@bls.gov • www.bls.gov/ro4
Media contact: (404) 893-4220

MINIMUM WAGE WORKERS IN FLORIDA – 2010

In 2010, 253,000 hourly-paid workers in Florida had earnings at or below the prevailing Federal minimum wage, the U.S. Bureau of Labor Statistics reported today. (See chart 1.) In the State, about 3.8 million workers were paid at hourly rates, representing 53.7 percent of all wage and salary workers¹. Regional Commissioner Janet S. Rankin noted that workers paid at or below the Federal minimum wage accounted for 6.7 percent of these hourly-paid workers in Florida². (See table 1.)

Chart 1. Employed wage and salary workers paid hourly rates with earnings at or below the prevailing Federal minimum wage in Florida, annual averages, 2000-2010



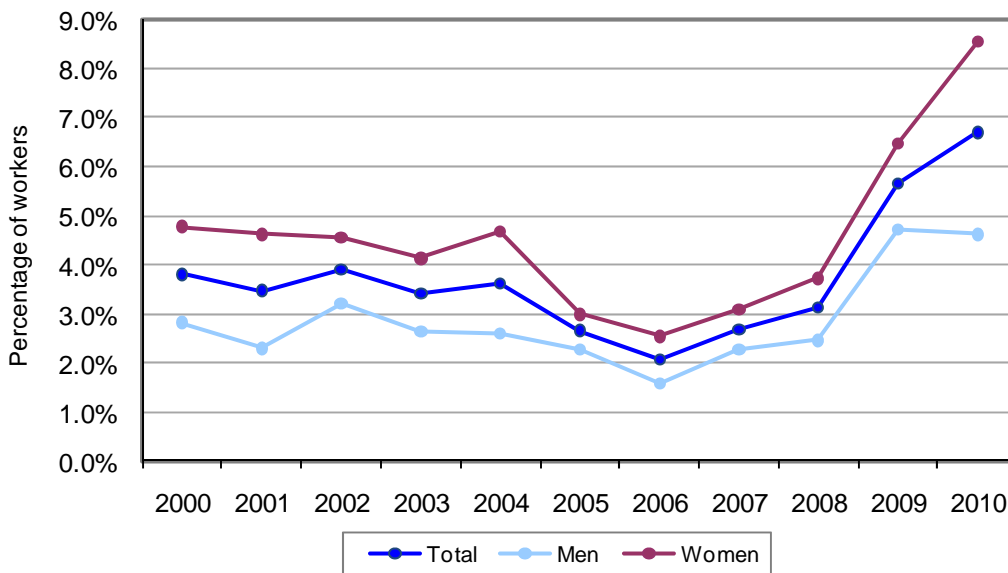
¹ Data are for wage and salary workers age 16 and over and refer to earnings on a person's sole or principal job. All self-employed persons are excluded whether or not their businesses are incorporated.

² The presence of a sizable number of workers with reported wages below the minimum does not necessarily indicate violations of the Fair Labor Standards Act, as there are exemptions to the minimum wage provisions of the law.

According to the Current Population Survey (CPS) estimates for 2010, 72.9 million workers in the United States were paid at hourly rates, representing 58.8 percent of all wage and salary workers. Of those paid by the hour, 1.8 million earned exactly the prevailing Federal minimum wage of \$7.25 per hour and nearly another 2.5 million reported wages below the minimum. Together, these 4.4 million workers with wages at or below the Federal minimum made up 6.0 percent of all hourly-paid workers.

The number of Florida workers with hourly pay at or below the Federal minimum rose by 38,000 in 2010. Women workers with hourly pay at or below the Federal minimum increased by 40,000 over the year bringing their share to 68.4 percent of the total, while the total for men decreased slightly. As a result, men accounted for 32.0 percent of the State’s hourly-paid workers earning the Federal minimum wage or less in 2010, down from 38.1 percent in the previous year. In 2010, 8.5 percent of hourly-paid women in Florida earned the Federal minimum wage or less, compared to 4.6 percent of hourly-paid men. (See table A and chart 2.)

Chart 2. Percentage of employed wage and salary workers paid hourly rates with earnings at or below the prevailing Federal minimum wage in Florida, by sex, annual averages, 2000-2010



Overall, Florida wage and salary workers paid hourly rates³ had median hourly earnings of \$12.36 in 2010; nationally, the median was \$12.50. The 2010 median hourly rates for men and women in Florida were \$13.06 and \$11.94, respectively. (See table A.) For the United States as a whole, the median hourly rates were \$13.76 for men and \$11.83 for women.

³ Wage rates in this release use median values. The median is the middle of a distribution: half the scores are above the median and half are below the median. The median is less sensitive to extreme wages than the mean; this makes it a better measure than the mean for highly skewed distributions.

Table A. Employed wage and salary workers paid hourly rates with earnings at or below the prevailing Federal minimum wage, and median earnings of all hourly-paid workers in Florida, annual averages, 2000-2010

Year	Number of workers at or below Federal minimum wage (in thousands)			All hourly-paid workers	
	Total	Below prevailing Federal minimum wage	At prevailing Federal minimum wage	Number of workers (in thousands)	Median earnings (in dollars)
Total					
2000	152	115	37	3,996	9.16
2001	141	111	30	4,061	9.67
2002	149	127	22	3,823	9.89
2003	133	100	33	3,886	10.12
2004	146	133	13	4,037	10.23
2005	117	105	12	4,404	10.69
2006	92	82	10	4,474	11.21
2007	114	99	15	4,261	11.76
2008	127	122	5	4,058	12.11
2009	215	167	48	3,795	12.16
2010	253	153	100	3,778	12.36
Men					
2000	56	46	10	1,985	9.87
2001	46	35	11	2,005	10.07
2002	60	51	9	1,867	10.19
2003	49	32	17	1,851	10.93
2004	52	46	6	2,000	11.13
2005	49	42	7	2,164	11.23
2006	34	30	4	2,150	11.98
2007	47	36	11	2,064	12.16
2008	47	46	1	1,910	12.86
2009	82	62	20	1,739	12.88
2010	81	49	32	1,753	13.06
Women					
2000	96	69	27	2,010	8.62
2001	95	76	19	2,056	8.98
2002	89	75	14	1,955	9.26
2003	84	68	16	2,035	9.76
2004	95	87	8	2,037	9.87
2005	67	63	4	2,240	10.15
2006	59	53	6	2,325	10.59
2007	68	64	4	2,197	10.91
2008	80	76	4	2,148	11.79
2009	133	105	28	2,057	11.79
2010	173	105	68	2,025	11.94

Note: Data exclude all self-employed persons whether or not their businesses are incorporated. Data may not sum to totals due to rounding.

Among the States and the District of Columbia, Mississippi and Texas, at 9.5 percent each, had the highest proportion of hourly-paid workers earning at or below the prevailing Federal minimum wage in 2010, followed by Alabama and West Virginia, at 9.3 percent each. Georgia, Kentucky, Louisiana, Missouri, Oklahoma, and Tennessee also had shares of at least 8.0 percent. The States with the lowest percentage of workers earning the Federal minimum wage or below included Alaska, Oregon, Washington, and California with shares at or below 2.0 percent. It should be noted that as of January 1,

2011, 17 States and the District of Columbia had laws establishing minimum wage standards that exceeded the Federal level of \$7.25 per hour⁴. (See table 1 and chart 3.)

Chart 3. Minimum wage laws in the States, January 1, 2011



Source: U.S. Department of Labor, Employment Standards Administration, Wage and Hour Division.

⁴ U.S. Department of Labor, Employment Standards Administration, Wage and Hour Division: <http://www.dol.gov/whd/minwage/america.htm>.

Technical Note

The Bureau of Labor Statistics' data on minimum wage are derived from the Current Population Survey (CPS), a nationwide sample survey of households that includes questions enabling the identification of hourly-paid workers and their hourly wage rate. Data in this summary are annual averages.

Minimum wage data, particularly levels, for each year are not strictly comparable with data for earlier years because of the introduction of revised population controls used in the CPS. Additional information is available on the BLS Web site at www.bls.gov/cps/documentation.htm#pop.

The prevailing Federal minimum wage was \$2.90 in 1979, \$3.10 in 1980, and \$3.35 in 1981-89. The minimum wage rose to \$3.80 on April 1, 1990, to \$4.25 on April 1, 1991, to \$4.75 on October 1, 1996, to \$5.15 on September 1, 1997, to \$5.85 on July 24, 2007, to \$6.55 on July 24, 2008, and to \$7.25 on July 24, 2009.

For personal assistance or further information on minimum wage data, as well as other Bureau data, contact the Southeast Information Office at 404-893-4222 from 9:00 a.m. to 12:00 p.m. and 1:00 p.m. to 4:00 p.m. ET. Information in this release will be made available to sensory impaired individuals upon request. Voice phone: 202-691-5200, TDD message referral phone number: 1-800-877-8339.

Table 1. Employed wage and salary workers paid hourly rates with earnings at or below the prevailing Federal minimum wage by State, 2010 annual averages

State	Number of workers (in thousands)				Percent distribution				Percent of workers paid hourly rates		
	Total paid hourly rates	At or below minimum wage			Total paid hourly rates	At or below minimum wage			At or below minimum wage		
		Total	At minimum wage	Below minimum wage		Total	At minimum wage	Below minimum wage	Total	At minimum wage	Below minimum wage
Total, 16 years and over..	72,902	4,361	1,820	2,541	100.0	100.0	100.0	100.0	6.0	2.5	3.5
Alabama.....	1,141	106	59	47	1.6	2.4	3.2	1.8	9.3	5.2	4.1
Alaska.....	208	4	1	3	0.3	0.1	0.1	0.1	1.9	0.5	1.4
Arizona.....	1,492	83	38	45	2.0	1.9	2.1	1.8	5.6	2.5	3.0
Arkansas.....	705	56	32	24	1.0	1.3	1.8	0.9	7.9	4.5	3.4
California.....	8,619	174	55	119	11.8	4.0	3.0	4.7	2.0	0.6	1.4
Colorado.....	1,135	55	14	41	1.6	1.3	0.8	1.6	4.8	1.2	3.6
Connecticut.....	866	35	5	30	1.2	0.8	0.3	1.2	4.0	0.6	3.5
Delaware.....	203	14	6	8	0.3	0.3	0.3	0.3	6.9	3.0	3.9
District of Columbia.....	97	5	1	4	0.1	0.1	0.1	0.2	5.2	1.0	4.1
Florida.....	3,778	253	100	153	5.2	5.8	5.5	6.0	6.7	2.6	4.0
Georgia.....	1,912	163	85	78	2.6	3.7	4.7	3.1	8.5	4.4	4.1
Hawaii.....	318	15	8	7	0.4	0.3	0.4	0.3	4.7	2.5	2.2
Idaho.....	396	30	15	15	0.5	0.7	0.8	0.6	7.6	3.8	3.8
Illinois.....	3,145	126	34	92	4.3	2.9	1.9	3.6	4.0	1.1	2.9
Indiana.....	1,610	126	60	66	2.2	2.9	3.3	2.6	7.8	3.7	4.1
Iowa.....	947	61	33	28	1.3	1.4	1.8	1.1	6.4	3.5	3.0
Kansas.....	771	59	30	29	1.1	1.4	1.6	1.1	7.7	3.9	3.8
Kentucky.....	1,119	91	43	48	1.5	2.1	2.4	1.9	8.1	3.8	4.3
Louisiana.....	981	87	29	58	1.3	2.0	1.6	2.3	8.9	3.0	5.9
Maine.....	369	14	3	11	0.5	0.3	0.2	0.4	3.8	0.8	3.0
Maryland.....	1,311	77	21	56	1.8	1.8	1.2	2.2	5.9	1.6	4.3
Massachusetts.....	1,519	45	10	35	2.1	1.0	0.5	1.4	3.0	0.7	2.3
Michigan.....	2,478	137	30	107	3.4	3.1	1.6	4.2	5.5	1.2	4.3
Minnesota.....	1,497	90	39	51	2.1	2.1	2.1	2.0	6.0	2.6	3.4
Mississippi.....	663	63	34	29	0.9	1.4	1.9	1.1	9.5	5.1	4.4
Missouri.....	1,531	123	55	68	2.1	2.8	3.0	2.7	8.0	3.6	4.4
Montana.....	255	17	12	5	0.3	0.4	0.7	0.2	6.7	4.7	2.0
Nebraska.....	536	30	17	13	0.7	0.7	0.9	0.5	5.6	3.2	2.4
Nevada.....	651	23	10	13	0.9	0.5	0.5	0.5	3.5	1.5	2.0
New Hampshire.....	356	19	5	14	0.5	0.4	0.3	0.6	5.3	1.4	3.9
New Jersey.....	1,612	113	31	82	2.2	2.6	1.7	3.2	7.0	1.9	5.1
New Mexico.....	476	26	6	20	0.7	0.6	0.3	0.8	5.5	1.3	4.2
New York.....	4,122	264	103	161	5.7	6.1	5.7	6.3	6.4	2.5	3.9
North Carolina.....	2,121	168	73	95	2.9	3.9	4.0	3.7	7.9	3.4	4.5
North Dakota.....	200	13	7	6	0.3	0.3	0.4	0.2	6.5	3.5	3.0
Ohio.....	3,185	172	49	123	4.4	3.9	2.7	4.8	5.4	1.5	3.9
Oklahoma.....	835	72	39	33	1.1	1.7	2.1	1.3	8.6	4.7	4.0
Oregon.....	994	16	6	10	1.4	0.4	0.3	0.4	1.6	0.6	1.0
Pennsylvania.....	3,255	206	91	115	4.5	4.7	5.0	4.5	6.3	2.8	3.5
Rhode Island.....	294	14	4	10	0.4	0.3	0.2	0.4	4.8	1.4	3.4
South Carolina.....	1,050	78	32	46	1.4	1.8	1.8	1.8	7.4	3.0	4.4
South Dakota.....	257	15	7	8	0.4	0.3	0.4	0.3	5.8	2.7	3.1
Tennessee.....	1,503	124	64	60	2.1	2.8	3.5	2.4	8.3	4.3	4.0
Texas.....	5,763	550	268	282	7.9	12.6	14.7	11.1	9.5	4.7	4.9
Utah.....	739	45	21	24	1.0	1.0	1.2	0.9	6.1	2.8	3.2
Vermont.....	184	6	1	5	0.3	0.1	0.1	0.2	3.3	0.5	2.7
Virginia.....	1,712	136	53	83	2.3	3.1	2.9	3.3	7.9	3.1	4.8
Washington.....	1,739	19	7	12	2.4	0.4	0.4	0.5	1.1	0.4	0.7
West Virginia.....	430	40	23	17	0.6	0.9	1.3	0.7	9.3	5.3	4.0
Wisconsin.....	1,657	91	44	47	2.3	2.1	2.4	1.8	5.5	2.7	2.8
Wyoming.....	163	12	6	6	0.2	0.3	0.3	0.2	7.4	3.7	3.7

NOTE: Data exclude all self-employed persons whether or not their businesses are incorporated. Users are reminded that these data are based on a sample and therefore are subject to sampling error; the degree of error may be quite large for less populous States. It is not possible to determine whether workers surveyed in the CPS are actually covered by the Fair Labor Standards Act (FLSA) or by individual State minimum wage laws. Thus, some workers reported as earning the prevailing Federal minimum wage may not in fact be covered by Federal or State minimum wage laws. Also, there are a number of States that have minimum wages that exceed the Federal minimum wage. At the same time, the presence of a sizable number of workers with wages below the prevailing Federal minimum wage does not necessarily indicate violations of the FLSA or applicable State laws, because there are numerous exclusions and exemptions to these minimum wage statutes.