

nucleotide substitutions in position 198 (T→C) and in position 136 (A→G) of the 249-bp fragment. The remaining sample showed 100% identity with *B. henselae* strains Brazil-1 and 45-00249 (GenBank accession nos. HQ012580 and GQ225709).

Four of the 56 successfully sequenced samples (7.14%; all samples from nymphs) showed the sequence pattern of *B. grahamii*. One sample revealed 100% identity with *B. grahamii* (GenBank accession no. EU014266); the remaining 3 samples showed an identity of 98% with the *B. grahamii* strain Hokkaido-1 (GenBank accession no. AB426652) and 99% (T→C in position 93) with a sequence described as *B. grahamii*-like (GenBank accession no. AY435122). Sequences obtained in this study (deposited in GenBank under accession nos. JQ770304 and JK758018) support the genetic variability of *Bartonella* spp., as demonstrated by others (5,7,8).

It remains unclear whether ticks are involved in transmission of pathogenic *Bartonella* spp. to humans under natural conditions. However, the total prevalence rate of 4.76% (100/2,100) questing *I. ricinus* ticks infected with *B. henselae* and *B. grahamii* highlights the need for public awareness and draws attention to the possibility of an infection with zoonotic *Bartonella* spp. after a tick bite (3,4). *B. henselae*, the predominantly identified species, has been associated with cat scratch disease, peliosis hepatis, and bacillary angiomatosis in humans. Eskow et al. (3) also connected chronic symptoms of Lyme disease to co-infections with *Borrelia burgdorferi* and *B. henselae*. *B. grahamii* has been associated with neuroretinitis and ocular artery thrombosis in humans (9,10). The potential risk for zoonotic *Bartonella* spp. infection in urban recreation areas should not be underestimated.

**Elisabeth Janecek,
Andreas Mietze, Ralph Goethe,
Thomas Schnieder,¹
and Christina Strube**

Author affiliation: University of Veterinary Medicine Hannover, Hanover, Germany

DOI: <http://dx.doi.org/10.3201/eid1810.120390>

References

1. Billeter SA, Levy MG, Chomel BB, Breitschwerdt EB. Vector transmission of *Bartonella* species with emphasis on the potential for tick transmission. *Med Vet Entomol.* 2008;22:1–15. <http://dx.doi.org/10.1111/j.1365-2915.2008.00713.x>
2. Reis C, Cote M, Le Rhun D, Lecuelle B, Levin ML, Vayssier-Taussat M, et al. Vector competence of the tick *Ixodes ricinus* for transmission of *Bartonella birtlesii*. *PLoS Negl Trop Dis.* 2011;5:e1186. <http://dx.doi.org/10.1371/journal.pntd.0001186>
3. Eskow E, Rao RV, Mordechai E. Concurrent infection of the central nervous system by *Borrelia burgdorferi* and *Bartonella henselae*: evidence for a novel tick-borne disease complex. *Arch Neurol.* 2001;58:1357–63. <http://dx.doi.org/10.1001/archneur.58.9.1357>
4. Angelakis E, Billeter SA, Breitschwerdt EB, Chomel BB, Raoult D. Potential for tick-borne bartonellosis. *Emerg Infect Dis.* 2010;16:385–91. <http://dx.doi.org/10.3201/eid1603.091685>
5. Mietze A, Morick D, Kohler H, Harrus S, Dehio C, Nolte I, et al. Combined MLST and AFLP typing of *Bartonella henselae* isolated from cats reveals new sequence types and suggests clonal evolution. *Vet Microbiol.* 2011;148:238–45. <http://dx.doi.org/10.1016/j.vetmic.2010.08.012>
6. Cotté V, Bonnet S, Le Rhun D, Le Naour E, Chauvin A, Boulouis HJ, et al. Transmission of *Bartonella henselae* by *Ixodes ricinus*. *Emerg Infect Dis.* 2008;14:1074–80. <http://dx.doi.org/10.3201/eid1407.071110>
7. Arvand M, Schubert H, Viezens J. Emergence of distinct genetic variants in the population of primary *Bartonella henselae* isolates. *Microbes Infect.* 2006;8:1315–20. <http://dx.doi.org/10.1016/j.micinf.2005.12.015>
8. Ehrenborg C, Handley S, Ellis B, Mills J, Holmberg M. *Bartonella grahamii* infecting rodents display high genetic diversity over short geographic distances. *Ann NY Acad Sci.* 2003;990:233–5. <http://dx.doi.org/10.1111/j.1749-6632.2003.tb07369.x>
9. Serratrice J, Rolain JM, Granel B, Ene N, Conrath J, Avierinos JF, et al. Bilateral retinal artery branch occlusions revealing *Bartonella grahamii* infection. *Rev Med Interne.* 2003;24:629–30. [http://dx.doi.org/10.1016/S0248-8663\(03\)00224-8](http://dx.doi.org/10.1016/S0248-8663(03)00224-8)
10. Kerkhoff FT, Bergmans AM, van Der Zee A, Rothova A. Demonstration of *Bartonella grahamii* DNA in ocular fluids of a patient with neuroretinitis. *J Clin Microbiol.* 1999;37:4034–8.

Address for correspondence: Christina Strube, Institute for Parasitology, University of Veterinary Medicine Hannover, Buenteweg 17, 30559 Hanover, Germany; email: christina.strube@tiho-hannover.de

Human Parvovirus 4 Viremia in Young Children, Ghana

To the Editor: Establishment of viremia is a characteristic feature of infection with human parvovirus 4 (PARV4). In northern Europe, PARV4 (human parvovirus 4) is primarily transmitted by blood-borne routes (1,2). In other areas (southern Europe, western Africa, South Africa, Asia) infection seems to be more widespread, suggesting alternative modes of virus acquisition (3–6).

We reported PARV4 genotype 3 viremia in young children with unknown parenteral blood exposure from the rural Ashanti region of Ghana (7). In that study, 2 (2.1%) of 94 children (median age 14.9 months) and 22 (11.9%) of 185 children (median age 24.0 months) were virus positive (ages of the 2 virus-positive children from the younger cohort 14.9 and 15.6 months). Because the number of infants was small in that study, we extended our investigations on PARV4 viremia to an additional

¹Deceased.

cohort of 15-month-old children from the same study group.

Plasma samples from 361 randomly selected children (191 girls) were tested. Specimens were collected during January–December 2004 during a trial of intermittent preventive malaria treatment in the rural Afigya Sekyere District, Ashanti Region, Ghana (7). Plasma samples were analyzed because of limited availability of whole blood samples. Median age of children was 14.9 months (range 13.8–17.5 months, interquartile range 14.5–15.2 months).

Nucleic acid was prepared from 200- μ L plasma samples by using the NucliSENS EasyMAG system (bioMérieux, Nürtingen, Germany). All samples were analyzed by using 2 real-time PCRs and primers described elsewhere (7,8). The limit of detection was \approx 200 plasmid copies/mL. Strict precautions were applied during plasma handling and amplification to avoid false-positive results.

PARV4 genotype 3 DNA was detected in plasma of 32 (8.9%) of 361 children. Viral load ranged from \approx 200 copies/mL to 3.0×10^4 copies/mL (Figure). Median viral load was 453 copies/mL. Nucleotide sequencing of screening PCR amplicons and additional genomic regions amplified from 6 plasma samples identified the viruses as PARV4 genotype 3 (GenBank accession nos. JN183933–JN183938). There was no association between history of fever, anemia, or erythema in children with or without PARV4 viremia ($p > 0.05$, by χ^2 test).

PARV4 viremia status was already known for 78 children 24 months of age (7). These data enabled comparison of viremia at 2 time points (24 months and 15 months of age). Of these 78 children, 10 showed viremia (viral load range 4.0×10^2 – 1.4×10^4 copies/mL) and 3 (3.8%) had viremia at both time points and identical viral nucleotide sequences (time between bleedings 8.7 months for 2 children and 9.0 months for 1 child). However,

only short genomic regions (780 nt for 1 child, 599 nt for a second child, and 95 nt for a third child) could be amplified and sequenced because of low viral loads. Four children had positive results in the first sample, and 3 had positive results in the second sample.

Because comparison of large and contiguous parts of the viral genomes within each sample pair was not possible and serologic data were lacking, PARV4 positivity over a 9-month period can be interpreted by 3 hypotheses. First, detection of PARV4 DNA over time might represent long-term viremia after infection, similar to observations in human parvovirus B19 infection. Second, demonstration of PARV4 during widely spaced intervals might indicate endogenous reactivation of viremia. Third, exogenous reinfection might have occurred.

PARV4 viremia was detected in a study in the United Kingdom among 110 PARV4-negative persons with

hemophilia screened over 5 years for PARV4 viremia and seroconversion (IgG and IgM) (9). Nine patients who seroconverted were identified, and 1 had PARV4 viremia (genotype 1) over an 8-month period. Viral loads for this patient were low ($<10^3$ copies/mL), a finding similar to ours for the 3 children. However, negative IgM results in the person with hemophilia suggest that the sampling window might have missed the acute infection.

Comparison of results of our study with those of our previous study (7) showed 2 differences. First, frequency of viremia in children tested previously at 15 months of age was lower (2.1%, 2/94) than in the children in this study (8.9%). Second, median viral loads differed by nearly 1 \log_{10} , with the higher concentrations in the previous study analyzing EDTA whole blood. Whether these differences were caused by the relatively small number of children included by or by the fact that whole blood samples were compared with plasma samples

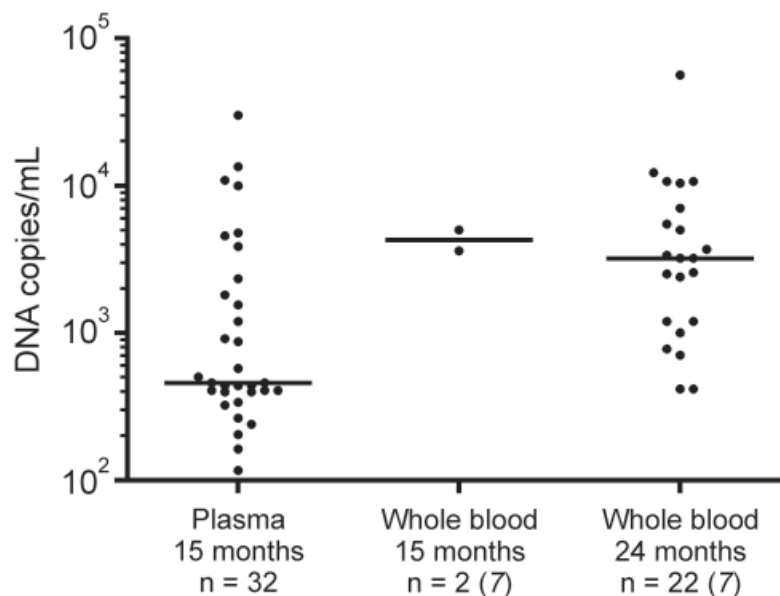


Figure. Parvovirus 4 DNA loads in virus-positive plasma specimens from children compared with those in whole blood samples previously tested (7), Ghana. Virus concentrations are given on a log scale on the y-axis. Each dot represents 1 specimen. Horizontal lines represent median values for each sample group. Children whose plasma was tested had a median age of 15 months, and children whose whole blood was tested had a median age of either 15 or 24 months. Viral load data (i. e., median viral load and range) for the 2 groups of whole blood samples have been reported (7) and were included for comparison with plasma data from this study.

remains to be clarified. However, our previous hypothesis that prenatal or perinatal transient infection was an unlikely mode of virus acquisition needs to be modified because PARV4 infection in newborns has recently been demonstrated (10).

Although we lacked IgM and IgG serologic data to interpret our findings, our study suggests that PARV4 genotype 3 infection might be characterized by viral persistence, reactivation, or reinfection. Additional longitudinal studies, including serologic testing for short intervals, are needed to determine the pathogenesis and potential public health role of PARV4 infection.

This study was supported by grants from the Union Bank of Switzerland Optimus Foundation to J.M. and C.D., the European Union FP7 project European Management Platform for Emerging and Re-emerging Infectious Disease Entities (grant no. 223498), the German Research Foundation (grant DR 772/3-1), and BONFOR to A.M.E.-H. (grant O-151.0021).

Jürgen May, Jan Felix Drexler, Ulrike Reber, Nimarko Sarpong, Ohene Adjei, Marcus Panning, Christian Drosten, and Anna Maria Eis-Hübinger

Author affiliations: Bernhard Nocht Institute for Tropical Medicine, Hamburg, Germany (J. May); University of Bonn Medical Centre, Bonn, Germany (J.F. Drexler, U. Reber, C. Drosten, A.M. Eis-Hübinger); Kwame Nkrumah University of Science and Technology, Kumasi, Ghana (N. Sarpong); Kumasi Centre for Collaborative Research in Tropical Medicine Kumasi (O. Adjei); and Freiburg University Medical Center, Freiburg, Germany (M. Panning)

DOI: <http://dx.doi.org/10.3201/eid1810.111836>

References

1. Simmonds P, Manning A, Kenneil R, Carnie FW, Bell JE. Parenteral transmission of the novel human parvovirus PARV4. *Emerg Infect Dis.* 2007;13:1386–8. <http://dx.doi.org/10.3201/eid1309.070428>
2. Lahtinen A, Kivela P, Hedman L, Kumar A, Kantele A, Lappalainen M, et al. Serodiagnosis of primary infections with human parvovirus 4, Finland. *Emerg Infect Dis.* 2011;17:79–82. <http://dx.doi.org/10.3201/eid1701.100750>
3. Touinssi M, Brisbarre N, Picard C, Frassati C, Dussol B, Uch R, et al. Parvovirus 4 in blood donors, France. *Emerg Infect Dis.* 2010;16:165–6. <http://dx.doi.org/10.3201/eid1601.090517>
4. Sharp CP, Vermeulen M, Nébié Y, Djoko CF, LeBreton M, Tamoufé U, et al. Epidemiology of human parvovirus 4 infection in sub-Saharan Africa. *Emerg Infect Dis.* 2010;16:1605–7. <http://dx.doi.org/10.3201/eid1610.101001>
5. Benjamin LA, Lewthwaite P, Vasanthapuram R, Zhao G, Sharp C, Simmonds P, et al. Human parvovirus 4 as potential cause of encephalitis in children, India. *Emerg Infect Dis.* 2011;17:1484–7. <http://dx.doi.org/10.3201/eid1708.110165>
6. Yu X, Zhang J, Hong L, Wang J, Yuan Z, Zhang X, et al. High prevalence of human parvovirus 4 infection in HBV and HCV infected individuals in Shanghai. *PLoS ONE.* 2012;7:e29474. <http://dx.doi.org/10.1371/journal.pone.0029474>
7. Panning M, Kobbe R, Vollbach S, Drexler JF, Adjei S, Adjei O, et al. Novel human parvovirus 4 genotype 3 in infants, Ghana. *Emerg Infect Dis.* 2010;16:1143–6. <http://dx.doi.org/10.3201/eid1607.100025>
8. Fryer JF, Delwart E, Hecht FM, Bernardin F, Jones MS, Shah N, et al. Frequent detection of the parvoviruses, PARV4 and PARV5, in plasma from blood donors and symptomatic individuals. *Transfusion.* 2007;47:1054–61. <http://dx.doi.org/10.1111/j.1537-2995.2007.01235.x>
9. Sharp CP, Lail A, Donfield S, Gomperts ED, Simmonds P. Virologic and clinical features of primary infection with human parvovirus 4 in subjects with hemophilia: frequent transmission by virally inactivated clotting factor concentrates. *Transfusion.* 2012;52:1482–9. <http://dx.doi.org/10.1111/j.1537-2995.2011.03420.x>
10. Chen MY, Yang SJ, Hung CC. Placental transmission of human parvovirus 4 in newborns with hydrops, Taiwan. *Emerg Infect Dis.* 2011;17:1954–6. <http://dx.doi.org/10.3201/eid1710.101841>

Address for correspondence: Anna Maria Eis-Hübinger, Institute of Virology, University of Bonn Medical Centre, Sigmund-Freud-Strasse 25, D-53127 Bonn, Germany; email: anna-maria.eis-huebinger@ukb.uni-bonn.de

Multidrug-Resistant *Salmonella enterica*, Democratic Republic of the Congo

To the Editor: *Salmonella enterica* serotype Typhi and the nontyphoid *S. enterica* (NTS) are leading causes of bacteremia in sub-Saharan Africa, but little information is available from central Africa (1,2). We describe an epidemic increase of *S. enterica* bacteremia in Kisantu in southwestern Democratic Republic of the Congo (DRC).

The Hospital of Saint Luc in Kisantu is a 274-bed referral hospital serving a community of 150,000 inhabitants. As part of an ongoing microbiological surveillance study in DRC (3), we identified pathogens grown from blood cultures (BacT/ALERT; bioMérieux, Marcy L'Etoile, France) and assessed them for antimicrobial drug susceptibility (Vitek II system; bioMérieux) (4) and serotype (Sifin, Berlin, Germany). We determined MICs for nalidixic acid, ciprofloxacin, and chloramphenicol using the Etest macromethod (bioMérieux). For salmonella isolates, we defined decreased ciprofloxacin susceptibility as an isolate with an MIC >0.064 mg/L (5) and multidrug resistance (MDR) as co-resistance of the isolate to ampicillin, chloramphenicol, and trimethoprim/sulfamethoxazole (6). Screening for mutations causing decreased ciprofloxacin susceptibility included assessment of the quinolone resistance-determining regions of the *gyrA*, *gyrB*, and *parC* genes and the plasmid-mediated *qnrA*, *qnrB*, and *qnrS* genes (7). Multilocus variable-number tandem-repeat analysis was performed on a subset of 37 *S. enterica* ser. Enteritidis isolates (8).

The pathogens isolated were *S. enterica* ser. Typhi (n = 17, 14.4%), Enteritidis (n = 79, 67.0%), and Typhimurium (n = 22, 18.6%). The increased incidence of *S. enterica* bac-