



# Integrating NEPA with EMS through GIS

05-284

## Background:

Army installations are required to have an Environmental Management System (EMS) in place by 2009. There is no guidance on how the National Environmental Policy Act (NEPA) process or Environmental Management Plans would or should integrate with the EMS. The lack of system and process integration has no direct negative impact on the Army's mission, but it was recognized that there would be excellent opportunities to have a beneficial effect on installation management effectiveness and efficiency. It was further recognized that high-level environmental management processes and plans could become disconnected with limited integration and alignment. It was observed that proposed or approved NEPA Actions sometimes were not formally communicated to Environmental Management Representatives or other interested or affected parties and stakeholders. Additionally, Environmental Management Plans were developed but sometimes are not routinely followed-up as well as they might be. Measurement of environmental activities is inconsistent, lacking coordination across environmental management plan boundaries.

## Objective:

The project was designed to diagram the NEPA baseline process at Ft. Lewis and develop a model process that integrated the NEPA process, the Environmental Management System and Sustainability Goals. Geo-Spatial tools were to be used as a means to improve both EMS and NEPA. Use of Geo Spatial tools figures prominently in the project and new opportunities to increase and improve the use these tools were to be identified.

Additionally, the project was designed to specify the relationship between the Balanced Score Card and the Strategic Readiness System. And it was determined that linkages between NEPA, EMS and Sustainability Goals needed to be defined as well.

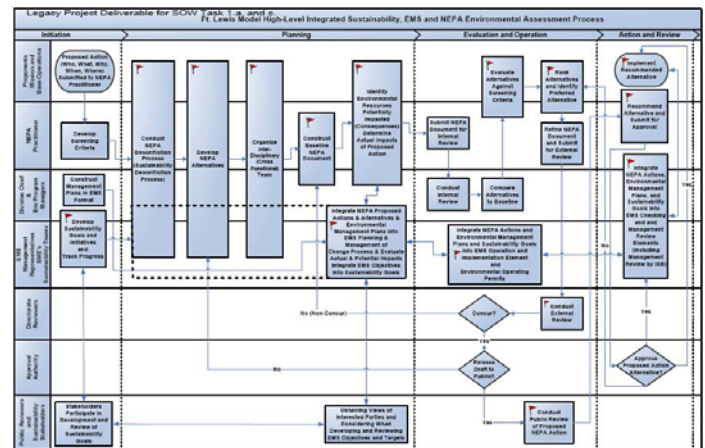
## Summary of Approach:

The baseline process was diagrammed and then used as the linchpin for developing the model processes. Text documents, tables and matrices were designed to address other elements of the Scope of Work. The text documents describe the relationships, activities and interdependencies of processes, activities and tasks.

Processes were designed to streamline activities and facilitate communication with internal and external stakeholders.

## Benefit:

The project provides innovative tools for integrating and aligning important management processes, objectives and measures and for enhancing communication with both internal and external stakeholders. Achievement of conservation objectives is enhanced through more effectively designed and implemented environmental management plans and new opportunities to use Geo Spatial tools to improve conservation practices.



Ft. Lewis Model High-Level Integrated Sustainability, EMS and NEPA Environmental Assessment Process

## Accomplishments:

New opportunities for the use of Geo Spatial tools have been identified. Existing management processes have been defined, diagrammed and clarified. An innovative design for constructing Environmental Management Plans in the EMS format has been developed. An innovative model process integrating NEPA, EMS and Sustainability Goals and aligning objectives and measures is now available. A training presentation describing the project and the relationship between the Mission and the processes is ready.

## Contact Information:

Bill Van Hoesen, NEPA Program Manager  
 IMNW-LEW-PWE MS 17  
 BOX 339500  
 Fort Lewis, Washington 98433-9500  
 Bill.VanHoesen@us.army.mil