



# Weekly Progress



AMERICAN RECOVERY & REINVESTMENT ACT

Week Ending June 17, 2011



CHPRC-01411

Contract DE-AC06-08RL14788  
Modification MO47

---

# Contents

OVERVIEW .....	3
SUMMARY .....	4
ACCOMPLISHMENTS .....	5
RL-0011 Nuclear Materials Stabilization & Disposition.....	5
RL-0011.R1: Plutonium Finishing Plant D&D.....	5
RL-0013 Solid Waste Stabilization & Disposition .....	6
RL-0013C:R1.1: Mixed Low-Level Waste (MLLW)/Low-Level Waste (LLW) Treatment .....	6
RL-0013C:R1.2: Transuranic (TRU) Waste .....	7
RL-0030 Soil & Groundwater Remediation, Groundwater/Vadose Zone.....	10
RL-0030.R1: Central Plateau Soil & Groundwater .....	10
RL-0040 Nuclear Facility D&D – Remainder of Hanford .....	11
RL-0040.R1.1: U Plant/Other D&D .....	11
RL-0040.R1.2: Outer Zone D&D/Waste Sites .....	14
RL-0040.R1.2: Outer Zone D&D/Waste Sites .....	16
RL-0041 Nuclear Facility D&D – River Corridor Closure Project .....	16
RL-0041.R1.1: 100K Area Remediation .....	16
UPCOMING EVENTS .....	19

---

## OVERVIEW

CH2M HILL Plateau Remediation Company (CHPRC) is using funds from the American Recovery and Reinvestment Act (Recovery Act) to accelerate critical environmental cleanup across the Central Plateau and the 100K Area along the Columbia River to help pursue the U.S. Department of Energy (DOE) “2015 Vision” to shrink the Hanford Site cleanup footprint.

### RL-0011 PLUTONIUM FINISHING PLANT D&D

CHPRC is accelerating critical decontamination and decommissioning work to cleanout and prepare the Plutonium Finishing Plant (PFP) for demolition ahead of the Tri-Party Agreement milestone of September 2016.

### RL-0013 SOLID WASTE STABILIZATION & DISPOSITION

CHPRC is accelerating cleanup of Hanford’s legacy waste and fuels, including retrieving, repackaging, and shipping transuranic (TRU) waste and shipping mixed low-level waste (MLLW) and low-level waste (LLW) for treatment and/or disposal.

### RL-0030 SOIL & GROUNDWATER REMEDIATION

In the ongoing effort to protect the Columbia River, CHPRC is constructing two groundwater treatment facilities; installing 265 wells for monitoring, extracting, and remediating groundwater; and decommissioning 280 wells that are no longer of service.

### RL-0040 NUCLEAR FACILITY D&D REMAINDER OF HANFORD

Across the Central Plateau and along the outer zone of the Hanford Site, CHPRC is remediating 24 waste sites and decommissioning and demolishing (D&D) 34 facilities to reduce mortgage, surveillance, and maintenance costs on buildings that are no longer of service. The scope also includes cleanup along the outermost edges of the Hanford Site at the Arid Lands Ecology (ALE) Reserve and North Slope, preparing the U Plant for a first-of-its-kind canyon demolition, and preparing to disposition radioactive railcars in the 200 North Area.

### RL-0041 100K AREA REMEDIATION

CHPRC is demolishing 15 reactor support facilities and sampling and/or remediating 23 waste sites to shrink the cleanup footprint of two reactors, K East and K West, located in the 100K Area along the Columbia River.

## For More Information

To find out more about Recovery Act progress at the Hanford Site, visit [www.hanford.gov/recovery](http://www.hanford.gov/recovery).

For information about CHPRC, including weekly Recovery Act newsletters and videos, visit [www.plateauremediation.hanford.gov](http://www.plateauremediation.hanford.gov) or contact [chprcc@rl.gov](mailto:chprcc@rl.gov).

## SUMMARY

The following chart outlines CHPRC’s progress on its main Recovery Act work goals. Progress on subprojects and other Recovery Act-funded activities is detailed throughout this report and accompanied by a short progress video available on [www.youtube.com/hanfordplateau](http://www.youtube.com/hanfordplateau).

### PLUTONIUM FINISHING PLANT D&D



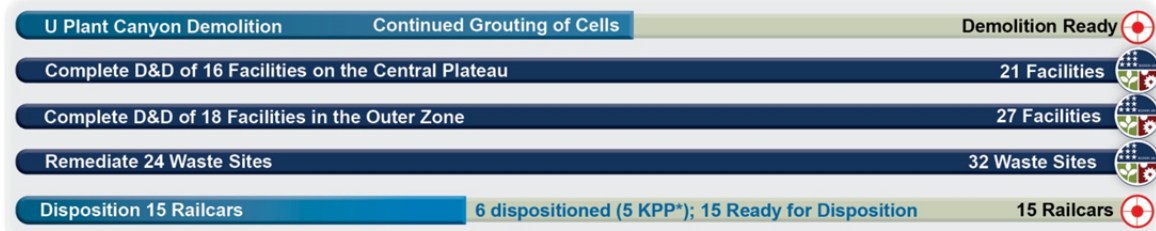
### SOLID WASTE STABILIZATION & DISPOSITION



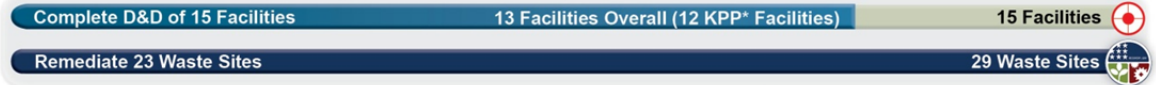
### SOIL & GROUNDWATER REMEDIATION



### NUCLEAR FACILITY D&D



### 100K AREA REMEDIATION



\*Key Performance Parameters (KPP) are specific items (wells, buildings, etc.) included in the Target. "Overall" indicates the total number completed with Recovery Act funds. "Completed" marks that CH2M HILL has completed a KPP.



## ACCOMPLISHMENTS

### RL-0011 Nuclear Materials Stabilization & Disposition

#### RL-0011.R1: Plutonium Finishing Plant D&D

ACTIVITY	PFP WASTE REMOVAL & DISPOSITION	
	<i>Week of June 17, 2011</i>	<i>Completed to Date with Recovery Act Funding</i>
Gloveboxes/hoods removed or dispositioned in place	1	125 gloveboxes/hoods
Add'l gloveboxes ready for removal/size reduction	-	2 gloveboxes/hoods
MLLW/LLW shipped	5 m <sup>3</sup>	2,676 m <sup>3</sup>
TRU shipped	15 m <sup>3</sup>	623m <sup>3</sup>
Non-radioactive waste shipped	1 m <sup>3</sup>	25 m <sup>3</sup>
Process transfer line removed	-	491 feet
Process vacuum system piping removed	-	1,210 feet
Asbestos removed	-	14,453 feet

#### *Process and Laboratory Areas*

Process equipment removal is nearly complete on 179-1, the final glovebox undergoing D&D work in the Plutonium Process Support Laboratory, while door modifications needed to transfer 188-1 to waste operations are still pending. Bulk area cleanout is continuing in the Analytical Laboratories.

The RMA and RMC Lines were permanently posted as airborne radioactivity areas and high-contamination areas, and RMC Line was also posted as a beryllium-controlled area for the remaining D&D work in these areas. External isolations have begun on the HC-2 conveyor in the RMC Line. Four gloveboxes in Room 235A-1 have been decontaminated and painted and are being separated from building ventilation, one (HA-16L) was completed and removed from the room. A temporary connection from Glovebox HA-23S to building ventilation was installed to support chemical decontamination of this large glovebox. Port activation and waste removal has been started on Glovebox 227-S.

#### *2736-Z/ZB Vault Complex*

Site (MSA) Electrical Utilities is preparing for final electrical isolation of the vault complex, while additional ductwork and filter housings are being removed. CHPRC's D&D project intends to begin their demo-prep work within the next two weeks.

#### *Infrastructure, support systems, and equipment removal*

Four gloveboxes previously removed with ARRA funds were shipped from PFP. Three were sent to PFNW for size reduction and one went to CWC/WRAP. All 30 drums of transuranic waste generated during size reduction of the WT-4 and -5 gloveboxes in the 242-Z Facility have also been disposed.

Additionally, PFP was the "event facility" for the annual, site-wide regional emergency exercise, with participation from most of the Hanford Site, surrounding communities and the State of Washington.



Photo 1

Members of the Hanford Fire Department are surveyed before transporting a simulated victim from PFP during the Regional Emergency Exercise held at Hanford on June 16, 2011.

## RL-0013 Solid Waste Stabilization & Disposition

RL-0013C:R1.1: Mixed Low-Level Waste (MLLW)/Low-Level Waste (LLW) Treatment

ACTIVITY	SOLID WASTE STABILIZATION & DISPOSITION <i>Total Completed with Recovery Act funds</i>
Ship 1,800 m <sup>3</sup> of MLLW/LLW for treatment and disposal	<ul style="list-style-type: none"> <li>• 1,714 m<sup>3</sup> shipped                             <ul style="list-style-type: none"> <li>○ 1,207 m<sup>3</sup> treated and disposed</li> <li>○ 507 m<sup>3</sup> at offsite treatment facilities awaiting processing. Treatment is scheduled for FY11</li> </ul> </li> </ul>

Six shipments were sent to Perma-Fix Northwest (PFNW) this week. Three of the six shipments were made from the Waste Retrieval Project (WRP) and included 37 drums (7.5 m<sup>3</sup>) of MLLW debris. One shipment of two drums (0.4 m<sup>3</sup>) from the Central Waste Complex (CWC) also contained MLLW debris. These four waste shipments will be treated through macro-encapsulation. The other two shipments were also sent from the CWC. Both shipments included two drums (0.4 m<sup>3</sup>) of LLW debris to undergo volume reduction and radiological stabilization. The processed waste from these shipments will be returned to the Hanford Site for disposal in the mixed waste disposal units at the low-level burial grounds.



Photo 2

Workers load a large box of transuranic (TRU) debris from the Waste Retrieval Project onto the Super 7A shipping container and replace the top cover. The TRU waste will be shipped to Perma-Fix Northwest for repackaging into standard waste boxes and returned to the Hanford Site.

RL-0013C:R1.2: Transuranic (TRU) Waste

ACTIVITY	SOLID WASTE STABILIZATION & DISPOSITION <i>Total Completed with Recovery Act funding</i>
Retrieve 2,500 m <sup>3</sup> of suspect TRU waste	<ul style="list-style-type: none"> <li>• 505 m<sup>3</sup> are staged, pending shipment</li> <li>• 1,364 m<sup>3</sup> shipped to a treatment, storage, or disposal facility</li> </ul>
Retrieve 50 m <sup>3</sup> of suspect remote-handled TRU waste	<ul style="list-style-type: none"> <li>• 7 m<sup>3</sup> are staged, pending shipment.</li> <li>• 78 m<sup>3</sup> shipped to a treatment, storage, or disposal facility</li> </ul>

At Trench 17 of the 3A burial ground, Box 80 was loaded into a Top Hat IP-1 base after the shoring box roof was repaired. Repairs continued on Box 14 and three containers (44.4 m<sup>3</sup>) were shipped to PFNW.

At 4B burial ground, large concrete Box 105 (48.1 m<sup>3</sup>) was removed from the 4B burial ground along with two metal containers (6 m<sup>3</sup>). The east end of 4B Trench 11 was excavated and metal Box 100 was exposed for removal. Access stairs were installed at the east end of Trench 11 of the 4B burial ground and one 55-gallon drum (0.2 m<sup>3</sup>) was shipped to PFNW. Four metal containers and one glove box were excavated and exposed in the west end of 4B Trench 11 – the containers are ready for removal.



At the 12B burial ground, excavation continued and 205 drums were removed from Trench 17. Thirty-six LLW drums were shipped in 8 x 4 x 4 foot waste boxes to PFNW, thirty-six drums were assayed in the Gamma Assay System and eight drums were vented in the Drum Venting System 2.



Photo 3

*Box 105, a large concrete box, is lifted approximately three feet for contamination surveys prior to removal. This box required a critical lift plan for removal due to its approximate weight of 61,200 pounds.*





Photo 4

A large concrete box, Box 105, is removed by crane from Trench 11 of the 4B burial ground. The skid plate is visible to allow the box to be dragged into the trench when it was buried in 1970.

*TRU Repackaging & Shipments*

ACTIVITY	SOLID WASTE STABILIZATION & DISPOSITION <i>Total Completed with Recovery Act funding</i>
Repackage 850 m <sup>3</sup> of WIPP certifiable TRU waste Disposition 2,000 m <sup>3</sup> of contacted-handled TRU waste	<ul style="list-style-type: none"> <li>• 969 m<sup>3</sup> have been repackaged</li> <li>• 1,726 m<sup>3</sup> have been disposed</li> </ul>

A total of 16 drums were repackaged at T Plant this week. In conjunction with the Central Characterization Program, four TRUPACT-II shipments left the Hanford Site bound for the Waste Isolation Pilot Plant (WIPP), for a total of 199 shipments completed since shipments resumed in March 2010.

TRUPACT-II shipments from the Hanford Site are paused due to a delay in receiving the regulatory certification from the Environmental Protection Agency and New Mexico Environment Department for the standard waste box (SWB) characterization processes. The characterization equipment awaiting certifications are the Super-High Efficiency Neutron Counter (Super-HENC) Non-Destructive Assay Unit and the High-Energy Real-Time Radiography (HERTR) Box Unit. The certification of the equipment is anticipated to support shipments resuming July 7, 2011.

One shipment including one box of TRU debris (38.1 m<sup>3</sup>) was made from the WRP to PFNW this week. The waste will be repackaged into a standard waste box and the repackaged waste will be returned to the Hanford Site for WIPP certification activities.

## RL-0030 Soil & Groundwater Remediation, Groundwater/Vadose Zone

RL-0030.R1: Central Plateau Soil & Groundwater

ACTIVITY	Week of June 17, 2011	Complete to Date with Recovery Act funds
Install 265 wells and/or boreholes along the river and in the Central Plateau	--	303
Decommission 280 old wells and boreholes that are no longer of service	8 wells completed	267
Construct the 200 West Groundwater Treatment Facility	71% complete	

### 200 West Groundwater Treatment Facility

Recent construction of the process and transfer facilities included (listed by facility):

- *Process buildings*
  - Radiological Building: Ongoing activities include instrumentation and controls rough-in. Continued mechanical overhead piping installation and installation of Vapor Off Gas ductwork; electrical lighting and power conduits overhead, pulling wire, as well as installation of exterior transformers.
  - Bio-Process Building: In process work continues for all disciplines: Instrumentation and controls rough in continues; Electrical panels and switchgear, fire alarm, overhead lighting and pulling wire, and installation of exterior transformers continued prep for setting main switch gear and rough in in the administration area. Continued installation of C and A-line utility racks, installation of process piping; installation of chemical piping in the chemical area. Fire protection nearing completion.
  - Bio Pad: Continued steel installation on the utility racks, hand rails and toe boards, grating and grouting base plates. Continued installation of vapor off gas duct work and blower equipment. Also continued installation of racks and panels, conduit, sleeves and cabling for lightning protection.
- *Transfer buildings*
  - Extraction Building #1: Dry run of Acceptance Test Procedure conducted.
  - Extraction Building #2: Construction acceptance testing was continued on mechanical, electrical, and process elements of the building.
  - Injection Building #1 & #2: Installation of service gears, piping, and/or pumps continued. Continued CAT testing on MEP at Injection Building #1.



Photo 5

Vapor off gas duct work and blower equipment continued to be installed on the Bio Pad at the 200 West Groundwater Treatment Facility.

## RL-0040 Nuclear Facility D&D – Remainder of Hanford

### RL-0040.R1.1: U Plant/Other D&D

#### CENTRAL PLATEAU FACILITIES DEMOLISHED WITH RECOVERY ACT FUNDS

- 211U Cold Chemical Makeup Tank Farm
  - 211UA Cold Chemical Makeup Tank Farm Addition
  - 203UX Gas Storage Facility
  - 2701M Office Bldg
  - 272E Fabrication, Mockup Shop Bldg
  - 2716E Power Maintenance Storage Bldg
  - 2722W Welding Laboratory Bldg
  - 224UA UO3 Calcination/Load-out Facility
  - 2710W Coal Handlers Shed\*
  - 2701EC 209-E Guard Station\*
  - 2902E Water Storage Tank\*
  - 2734EA Gas Cylinder Storage Bldg
  - 275E Carpenter Shop Bldg
  - MO104 Mobile Office
  - MO405 Mobile Office
  - MO840 Mobile Office
  - X8 Motor Car Shed
  - 224U UO3 Plant Concentration/Load-out Bldg
  - 284WB Package Boiler Plant
  - 209EA 90 Day Storage Pad\*
  - 2902W Water Storage Tank\*
- TOTAL: 108,951 square feet**

\*Not part of the Key Performance Parameter

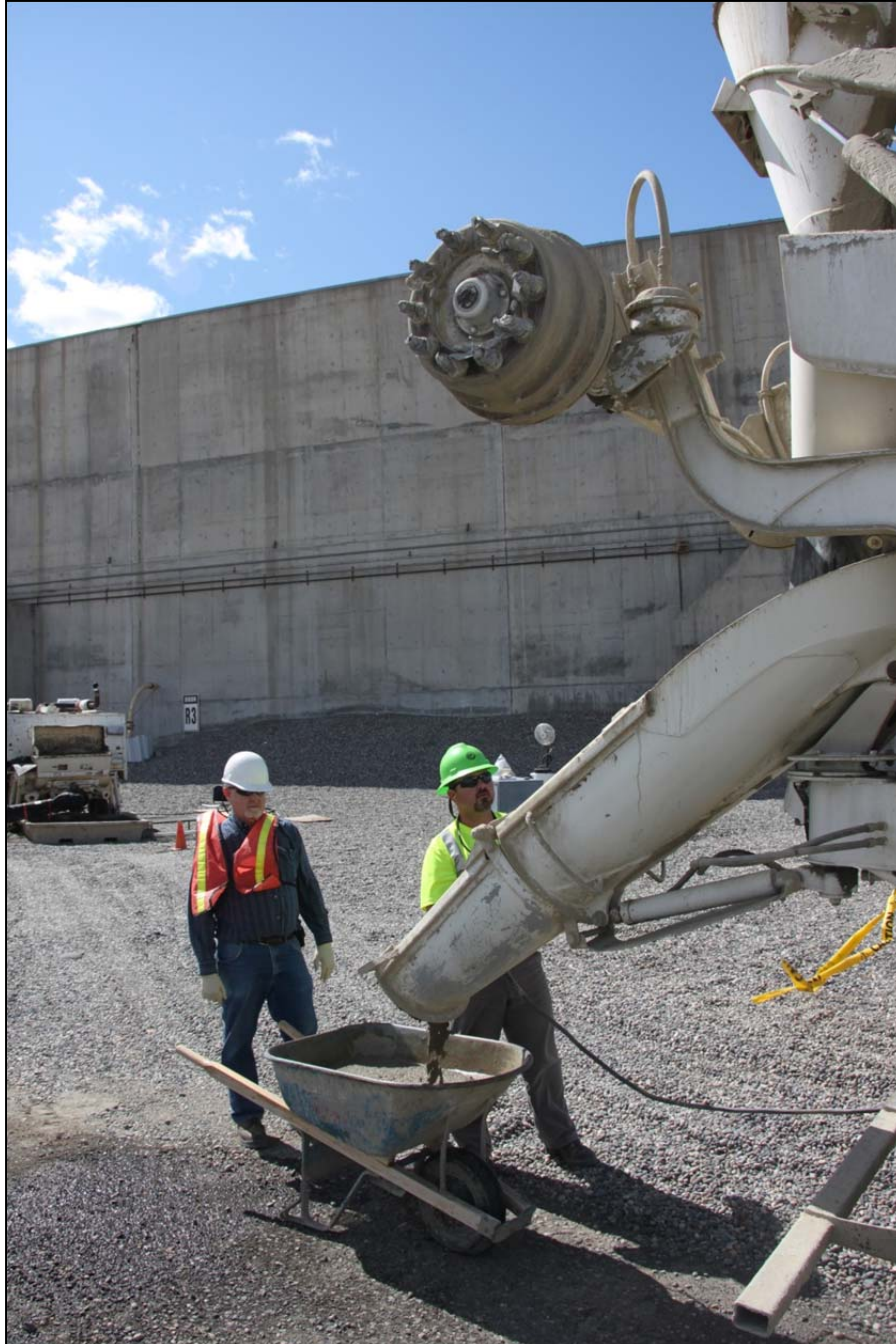
#### PLANNED FOR D&D/IN PROGRESS

- 284E Power House & Steam Plant
- 209E Critical Mass Laboratory
- 284W Power House & Steam Plant



*U Canyon*

CHPRC crews continued pouring grout into U Canyon cells, delivering approximately 300 cubic yards of grout into Cells 1-16. Workers also continued preparations to remove the D-10 Tank from Cell 30, wrapping the shipping cask with additional lead and tungsten shielding and hoisting the cask onto the truck that will carry D-10 out of the canyon.



CHPRC subcontractors pumping grout into U Canyon fill up a wheelbarrow for a quality-control test.

Photo 6



Photo 7

A CHPRC crew attaches additional shielding to the shipping container that will hold the D-10 tank when it is removed from U Canyon.

#### *U Plant Ancillary Facilities*

Closure documentation is being prepared.

#### *200 East Core Industrial Area*

Processing and loadout of debris from the 284-E Power House demolition site is nearly complete.





Photo 8

All five boilers have now been lowered at the 284-E Power House, and debris cleanup at the site of the March 4 explosive demolitions of 284-E's stacks and baghouses – and the subsequent demolition of the main building – is nearly complete.

#### *200 West Area Industrial Facilities*

Asbestos abatement continued inside the 284-W Power House building on the structure's second, third and fourth floors.

#### *209-E Criticality Mass Laboratory*

CHPRC crews completed size-reduction of Tank 104 and began work on Tank 102, the second of 11 slab tanks in the facility. Upon removal of all 11 tanks, the 209-E facility can be downgraded to a Less Than Hazard Category 3 (non-nuclear) facility and demolished later this summer.

#### RL-0040.R1.2: Outer Zone D&D/Waste Sites

##### OUTER ZONE FACILITIES DEMOLISHED WITH RECOVERY ACT FUNDS

212N Storage Building	6652M Fallout Laboratory
212P Electrical Storage & Transformer Shop	6652R Acid Storage Shed
212R Storage Building	6652C Space Science Laboratory
614 Monitor Station	6652CSHED Storage Building
646 Radioecology Field Laboratory	6652D Pump House
6652G ALE Field Storage Building	6652T Fire Protection Lower Pump House
6652H ALE Laboratory 1	6652U Rattlesnake Mountain Upper Pump House
6652I ALE Headquarters	623A Plant Radio Relay Bldg
6652J ALE Laboratory II	T520-6 Navy MARS Radio Station
6652S Sentry Shed*	6631 Radio Telescope Pedestal*



6634 ENW Tower and Building\*  
 6635 Crown Castle/Cingular Tower and Building\*  
 6637 Tri City Amateur Radio Tower and Building\*  
 6632 Verizon Telephone Enclosure\*

6630 Hodges Well Pumphouse\*  
 6636 Columbia Communication Tower and Building\*  
 6633 Franklin County Communication Building\*  
**TOTAL: 62,748 square feet**

\*Not part of the Key Performance Parameter

### *North Slope Debris Removal*

Personnel with CHPRC subcontractor Sealaska Environmental Services have now completed cleanup of Areas 12, 13, 15, 16, and 18 as crews await the completion of cultural and environmental reviews of remaining debris sites.

### *Arid Lands Ecology Reserve*

Revegetation of cleared sites on ALE is ongoing while closure documentation for removal of facilities from the area is prepared.

### *D&D of Railcars Located on the 212-R Rail Spur*

CHPRC crews and subcontractors Clauss Construction and Barnhart Crane delivered the fourth of the cask well railcars to the Environmental Restoration Disposal Facility (ERDF).



Photo 9

CHPRC subcontractor Barnhart Crane delivers the fourth of the cask well cars to the Environmental Resoration Disposal Facility (ERDF). One tall and one standard cask well car will be delivered to B Reactor to join the two locomotives for preservation and display; the rest will be delivered to ERDF for disposal.

## RL-0040.R1.2: Outer Zone D&amp;D/Waste Sites

*Waste Sites*

The following table showcases CHPRC's recent progress in outer zone waste remediation.

WASTE SITE IN PROGRESS	TONS OF CONTAMINATED SOIL REMOVED	
	<i>Week Ending June 17, 2011</i>	<i>Total to Date with Recovery Act funds</i>
BC Control Area	6,100	453,800

Recent activities regarding the outer zone waste sites included (listed by operable unit or site):

- *200-MG-1*
  - 
  - 600-228: Initial excavation activities are complete contingent upon sample results. Sampling was performed on June 8, 2011.
  - 600-281: Field excavation activities pending sampling results are complete. Preliminary sample results indicate residual contamination above cleanup criteria at one location.
  - 216-S-19: Direct push test sampling is complete. Laboratory results of surface sampling were analyzed revealing some elevated levels of contamination above the remedial action levels. Additional excavation was completed on June 1, 2011. Verification sampling was completed and laboratory results are expected within the next two weeks.
  - 216-S-26: Initial excavation was completed pending sample validation. Preliminary verification sample results are in and under evaluation.
  - 200-W-147-PL: Excavation is complete. Backfill is ongoing.
  - 600-49: Initial excavation field activities are complete contingent upon sample results. Verification sampling is anticipated in mid June.
- *BC Control Area*
  - Radiological down-post surveys and localized spot removal are ongoing.

## RL-0041 Nuclear Facility D&amp;D – River Corridor Closure Project

## RL-0041.R1.1: 100K Area Remediation

100K AREA FACILITIES DEMOLISHED WITH RECOVERY ACT FUNDS		PLANNED FOR D&D/IN PROGRESS	
• 183KW Chlorine Vault	• 116KE Reactor Exhaust Stack	• 183.4KW Clearwell	• 181KE River Pump House
• 183.1KW Headhouse	• 118KE Horizontal Control Rod Storage	• 183.4KE Clearwell	• 1605KE Guard House
• 183.2KW Sedimentation Basin	• MO048 Construction Lunch Trailer	• 190KW Main Pump House	• 181KW River Pump House
• 183.3KW Filter Basin	• MO969 Ops/HPT Change Trailer	• 190KE Main Pump House	
• 183.7 KW Pipe Tunnel	• 115KE Gas Recirculation		
• 110KE Gas Storage Facility	• 185-K Potable Water Treatment Plant*		
• 117KE Exhaust Air Filter Bldg	<b>TOTAL: 428, 260 square feet</b>		

\*Not part of the Key Performance Parameter

*Facility D&D*

At the 181-KW River Pumphouse Structure, a CHPRC Environmental Compliance Officer led the relocation of four young barn owls from the guardhouse atop the 181-KW River Pumphouse Structure, allowing demolition of the structure itself to begin. Demolition and loadout continued on the east and west sides of the 183.3-KE Filter Basins, both 120,000-square-foot 183.4-KE and 183.4-KW Clearwells, and below-ground structures at the site of the demolished 183.1-KE Headhouse. Demolition work was also performed on the 110KW Gas Recirculation Building in preparation for modifications to the 105KW complex that will facilitate shipment of sludge from that facility's fuel storage basin.



Photo 10

*A CHPRC Environmental Compliance Officer sets down a crate with four young barn owls after removing them from the guard house atop the 181-KW River Pumphouse Structure, enabling demolition to begin. The owls were relocated to the Blue Mountain Nature Preserve.*





Photo 11

*Demolition begins on the 181-KW River Pumphouse Structure, which once pumped over 200,000 gallons of Columbia River water a minute into the KW Reactor system, after a family of owls were relocated to the Blue Mountain Nature Preserve.*

#### *Infrastructure Utilities Upgrade Project*

All 100K Area Infrastructure Projects are completed and operational.

#### *Waste Sites*

A confirmatory sample instruction is being drafted to complete the sampling of 100-K-79 waste site, Sodium Dichromate and Sulfuric Acid Product Pipelines at 100-K.

## UPCOMING EVENTS

### RL-0011 Nuclear Materials Stabilization & Disposition

#### RL-0011.R1: Plutonium Finishing Plant D&D

- Enlarge a doorway and transfer glovebox 188-1 to waste operations.
- Complete D&D and remove glovebox 179-1, the last remaining glovebox in the laboratory and backside vault areas.
- Remove or stabilize contaminated ventilation ductwork in 2736-ZB, complete electrical isolations and transfer the 2736-Z vault complex to CHPRC D&D for demolition.
- Isolate gloveboxes HA-15, HA-16BS and HA-16CS from building ventilation and prepare them for removal from RMA Line
- D&D the remaining gloveboxes in the RMA/RMC Line process areas.
- Complete final area cleanout in the Standards, Analytical and Plutonium Process Support Laboratory areas.
- Remove contaminated HEPA filters from 234-5Z final filter rooms 311 and 316.
- Continue removing process vacuum piping, process transfer lines and asbestos insulation from throughout 234-5Z building.

### RL-0013 Solid Waste Stabilization & Disposition

#### RL-0013C:R1.1: MLLW Treatment

- Four MLLW shipments (20.1 m<sup>3</sup>) planned from the WRP to PFNW for treatment by macro-encapsulation.

#### RL-0013C:R1.2: TRU Waste

- TRU Retrieval
  - 3A burial ground
    - Ship Trench 17 Boxes 14 and 80 to CWC and Box 18 to PFNW.
    - Complete repairs to Box 14 in Trench 17 and ship to CWC.
  - 4B/4C burial ground
    - Resume overburden removal in Trench 7 of the 4B burial ground.
    - Complete the 4C Process Area User Validation/Functional Test of the Mobile Drum Venting System (MDVS) procedure.
    - Vent 12 drums at the 4C Process Area MDVS and load the drums into SWBs in preparation for shipment.
    - Continue 4C process Area assay of removed waste containers from Trench 11 of the 4B burial ground.
    - Complete work package to remove Box 101 from Trench 11 of the 4B burial ground.
    - Ship large concrete Box 105 (48.1 m<sup>3</sup>) from Trench 11 of the 4B burial ground to CWC.
    - Ship two metal containers (6 m<sup>3</sup>) in gray cruiser to PFNW from Trench 11 of the 4B burial ground.
    - Overpack eight metal containers from Trench 11 of the 4B burial ground into 9 x 5 x 5 foot waste boxes for shipment.
    - Overpack two thorium 55-gallon drums from Trench 11 of the 4B burial ground into 85-gallon drums for shipment.
  - 12B burial ground
    - Continue excavation and waste removal activities.
    - Continue to process removed drums (venting, assay, x-ray) and shipments.
- TRU Repackaging and Shipments
  - No planned shipments.
- Suspect TRU Waste Shipments

- Two TRU shipments (33.4 m<sup>3</sup>) planned from WRP to PFNW for repackaging.

## **RL-0030 Soil & Groundwater Remediation, Groundwater/Vadose Zone**

RL-0030.R1: Central Plateau Soil & Groundwater

- Continue construction of the 200 West Groundwater Treatment Facility.
- Continue well decommissioning.

## **RL-0040 Nuclear Facility D&D – Remainder of Hanford**

RL-0040.R1.1: U Plant/Other D&D

- Continue pouring grout into U Canyon cells.
- Continue size-reduction of slab tanks inside the 209-E Criticality Mass Laboratory.
- Complete processing and loadout of debris at the 284-E Power House site.
- Continue asbestos abatement inside the 284-W Power House.

RL-0040.R1.2: Outer Zone D&D/Waste Sites

- Continue to deliver well cask railcars to ERDF for disposal.
- Continue planning for and remediating 200-MG-1 waste sites

## **RL-0041 Nuclear Facility D&D – River Corridor Closure Project**

RL-0041.R1.1: 100K Area Remediation

- Continue demolition of 181-KW River Pumphouse.
- Continue demolition and loadout of the 183.3-KE Filter Basins.
- Continue excavating soil from and planning for remediating 100K Area waste sites.