



# Weekly Progress



AMERICAN RECOVERY & REINVESTMENT ACT

Week Ending May 27, 2011



CHPRC-01380

Contract DE-AC06-08RL14788  
Modification MO47

---

# Contents

OVERVIEW.....	3
SUMMARY.....	4
ACCOMPLISHMENTS.....	5
RL-0011 Nuclear Materials Stabilization & Disposition.....	5
RL-0011.R1: Plutonium Finishing Plant D&D.....	5
RL-0013 Solid Waste Stabilization & Disposition.....	8
RL-0013C:R1.1: Mixed Low-Level Waste (MLLW)/Low-Level Waste (LLW) Treatment.....	9
RL-0013C:R1.2: Transuranic (TRU) Waste.....	10
RL-0030 Soil & Groundwater Remediation, Groundwater/Vadose Zone.....	13
RL-0030.R1: Central Plateau Soil & Groundwater.....	13
RL-0040 Nuclear Facility D&D – Remainder of Hanford.....	15
RL-0040.R1.1: U Plant/Other D&D.....	15
RL-0040.R1.2: Outer Zone D&D/Waste Sites.....	17
RL-0041 Nuclear Facility D&D – River Corridor Closure Project.....	18
RL-0041.R1.1: 100K Area Remediation.....	18
UPCOMING EVENTS.....	20

---

## OVERVIEW

CH2M HILL Plateau Remediation Company (CHPRC) is using funds from the American Recovery and Reinvestment Act (Recovery Act) to accelerate critical environmental cleanup across the Central Plateau and the 100K Area along the Columbia River to help pursue the U.S. Department of Energy (DOE) “2015 Vision” to shrink the Hanford Site cleanup footprint.

### RL-0011 PLUTONIUM FINISHING PLANT D&D

CHPRC is accelerating critical decontamination and decommissioning work to cleanout and prepare the Plutonium Finishing Plant (PFP) for demolition ahead of the Tri-Party Agreement milestone of September 2016.

### RL-0013 SOLID WASTE STABILIZATION & DISPOSITION

CHPRC is accelerating cleanup of Hanford’s legacy waste and fuels, including retrieving, repackaging, and shipping transuranic (TRU) waste and shipping mixed low-level waste (MLLW) and low-level waste (LLW) for treatment and/or disposal.

### RL-0030 SOIL & GROUNDWATER REMEDIATION

In the ongoing effort to protect the Columbia River, CHPRC is constructing two groundwater treatment facilities; installing 265 wells for monitoring, extracting, and remediating groundwater; and decommissioning 280 wells that are no longer of service.

### RL-0040 NUCLEAR FACILITY D&D REMAINDER OF HANFORD

Across the Central Plateau and along the outer zone of the Hanford Site, CHPRC is remediating 24 waste sites and decommissioning and demolishing (D&D) 34 facilities to reduce mortgage, surveillance, and maintenance costs on buildings that are no longer of service. The scope also includes cleanup along the outermost edges of the Hanford Site at the Arid Lands Ecology (ALE) Reserve and North Slope, preparing the U Plant for a first-of-its-kind canyon demolition, and preparing to disposition radioactive railcars in the 200 North Area.

### RL-0041 100K AREA REMEDIATION

CHPRC is demolishing 15 reactor support facilities and sampling and/or remediating 23 waste sites to shrink the cleanup footprint of two reactors, K East and K West, located in the 100K Area along the Columbia River.

## For More Information

To find out more about Recovery Act progress at the Hanford Site, visit [www.hanford.gov/recovery](http://www.hanford.gov/recovery).

For information about CHPRC, including weekly Recovery Act newsletters and videos, visit [www.plateauremediation.hanford.gov](http://www.plateauremediation.hanford.gov) or contact [chprcc@rl.gov](mailto:chprcc@rl.gov).

# SUMMARY



CH2M HILL PLATEAU REMEDIATION COMPANY

## PROGRESS UPDATE

May 27, 2011

The following chart outlines CH2M HILL's progress on some of its main Recovery Act work goals. For information about CH2M HILL's overall progress, including weekly Recovery Act reports and videos, visit [www.plateauremediation.hanford.gov](http://www.plateauremediation.hanford.gov) or contact [chprcc@rl.gov](mailto:chprcc@rl.gov).

### PLUTONIUM FINISHING PLANT D&D



### SOLID WASTE STABILIZATION & DISPOSITION



### SOIL & GROUNDWATER REMEDIATION



### NUCLEAR FACILITY D&D



### 100K AREA REMEDIATION



\*Key Performance Parameters (KPP) are specific items (wells, buildings, etc.) included in the Target. "Overall" indicates the total number completed with Recovery Act funds. "Completed" marks that CH2M HILL has completed a KPP.

CHPRC1105-04



## ACCOMPLISHMENTS

### RL-0011 Nuclear Materials Stabilization & Disposition

RL-0011.R1: Plutonium Finishing Plant D&D

ACTIVITY	PFP WASTE REMOVAL & DISPOSITION	
	<i>Week of May 27, 2011</i>	<i>Completed to Date with Recovery Act Funding</i>
Gloveboxes/hoods removed or dispositioned in place	-	124 gloveboxes/hoods
Add'l gloveboxes ready for removal/size reduction	-	2 gloveboxes/hoods
MLLW/LLW shipped	14 m <sup>3</sup>	2,651 m <sup>3</sup>
TRU shipped	5 m <sup>3</sup>	577 m <sup>3</sup>
Non-radioactive waste shipped	-	24 m <sup>3</sup>
Process transfer line removed	-	491 feet
Process vacuum system piping removed	-	1,210 feet
Asbestos removed	103 feet	14,329 feet

#### *Process and Laboratory Areas*

Area cleanout has been completed for the Radioactive Acid Digestion Test Unit (RADTU) area. General area cleanout of the Analytical Laboratories was initiated, and work planning is under way for cleanout of the Standards Laboratory.

In the Plutonium Process Support Laboratory (PPSL), the D&D team continued external isolations and equipment removal from glovebox 179-1, the last glovebox in the laboratory. In the Remote Mechanical A (RMA) Line, the criticality drain collection tank was removed from below glovebox HA-46 in room 232 and transferred to waste operations. Final external isolations were initiated on four previously decontaminated and painted gloveboxes (HA-15, HA-16L, HA-16BS, and HA-16CS) to prepare them for removal from building ventilation. Another RMA Line D&D team completed preparations to begin chemical decontamination of large glovebox HA-23S with Aspigel®.

#### *2736-Z/ZB Vault Complex*

On May 25, 2011, the PFP vault complex was declared “operationally clean”, which authorizes deactivation of selected Technical Safety Requirement controls. Approval was received from the Fire Marshall to deactivate the fire detection and suppression systems in the buildings, and the isolation work was completed on May 26. Coupon sampling of ventilation ductwork in the 2736-ZB building was completed and samples are being analyzed to determine if additional ductwork will need to be removed or if it can be stabilized and left in place for demolition. Work continued on removal of the ductwork known to require removal; the vault D&D team completed removal of the emergency exhaust line. More than 70 percent of the ventilation filters throughout the various buildings in the complex have now been removed for disposal.



Photo 1

A sign painter affixes an "Operationally Clean" sign to the west entrance of the Plutonium Finishing Plant's 2736-ZB vault support facility. CHPRC completed work that enabled the building's criticality and fire systems to be deactivated and isolated – bringing the facility two steps closer to Cold and Dark, "demolition ready" status.



Photo 2

The entrance to the 2736-ZB vault support facility, which CHPRC brought to “operationally clean” status last week. Workers have now deactivated several systems – such as criticality detection, fire detection, and alarm systems – that are no longer required following removal of certain hazards and wastes from the building.

*Infrastructure, support systems, and equipment removal*

Three sections of the HC-3 and HA-28 conveyors were shipped to Perma-Fix Northwest (PFNW) for size reduction. Glovebox 179-4, previously removed from the PPSL, was also loaded for shipment to PFWN. The process transfer line removal team resumed their work and completed size reduction of the 31 feet of pipe removed just prior to the duct-level contamination event.





Photo 3

*A section of a glovebox removed from the Plutonium Finishing Plant is transported to be loaded for shipment and disposal.*





Photo 4

Glovebox 179-4 is prepared to be loaded into a container for shipment and disposal.

## RL-0013 Solid Waste Stabilization & Disposition

RL-0013C:R1.1: Mixed Low-Level Waste (MLLW)/Low-Level Waste (LLW) Treatment

ACTIVITY	SOLID WASTE STABILIZATION & DISPOSITION
Ship 1,800 m <sup>3</sup> of MLLW/LLW for treatment and disposal	<i>Total Completed with Recovery Act funds</i>
	<ul style="list-style-type: none"> <li>• 1,569 m<sup>3</sup> shipped                             <ul style="list-style-type: none"> <li>○ 1,180 m<sup>3</sup> treated and disposed</li> <li>○ 389 m<sup>3</sup> at offsite treatment facilities awaiting processing. Treatment is scheduled for FY11</li> </ul> </li> </ul>

One shipment (10 m<sup>3</sup>) left the Waste Retrieval Project (WRP) for Perma-Fix Northwest (PFNW). The shipment included 48 drums of MLLW debris that will undergo macro-encapsulation. The treated waste will be returned to the Hanford Site for disposal in the mixed waste disposal units at the low-level burial grounds.

## RL-0013C:R1.2: Transuranic (TRU) Waste

ACTIVITY	SOLID WASTE STABILIZATION & DISPOSITION
	<i>Total Completed with Recovery Act funding</i>
Retrieve 2,500 m <sup>3</sup> of suspect TRU waste	<ul style="list-style-type: none"> <li>• 514 m<sup>3</sup> are staged, pending shipment</li> <li>• 1,212 m<sup>3</sup> shipped to a treatment, storage, or disposal facility</li> </ul>
Retrieve 50 m <sup>3</sup> of suspect remote-handled TRU waste	<ul style="list-style-type: none"> <li>• 13 m<sup>3</sup> are staged, pending shipment.</li> <li>• 72 m<sup>3</sup> shipped to a treatment, storage, or disposal facility</li> </ul>

At Trench 17 of the 3A burial ground, Box 27 (59.5 m<sup>3</sup>) was shipped to Central Waste Complex (CWC) and Box 19 (11 m<sup>3</sup>) was shipped to PFNW. Development on work package and procurement of materials for Trench 17 Box 14 repairs continued. Following the installation of plywood reinforcing walls and final excavation, Box 80 (43.5 m<sup>3</sup>) was removed and the installation of the shoring box walls and roof was completed. Box 80 is the last of 114 boxes to be removed from Trench 17.

At 4B burial ground, a concrete box (6.8 m<sup>3</sup>) was shipped to PFNW and a concrete box and metal container (12.4 m<sup>3</sup>) were sent to CWC. Gas Chromatograph (GC) calibration, functional test, and user validation of operating procedure SW-100-154 was completed on 4C Mobile Drum Venting System.

At the 12B burial ground, excavation continued in Trench 17 to expose drums for removal. Forty-eight 8 x 4 x 4 ft. boxes containing six 55-gallon drums each of LLW and one TRU box were shipped to PFNW. Forty-eight drums were assayed in the Gamma Assay System, seven drums in the Passive/Active Neutron Assay System, and five TRU drums were x-rayed in the Real-time Radiography System. Twelve drums were vented in the Drum Venting System 3 and the head space gases were sampled.



Photo 5

*Box 80 in Trench 17 of the 3A burial ground is lowered onto a shoring based after plywood reinforcing walls and a plastic cover were installed.*





Photo 6

Box 80 from Trench 17 of the 3A burial grounds is removed from the trench by a crane. Box 80 is the last of 114 boxes to be removed from Trench 17.

*TRU Repackaging & Shipments*

ACTIVITY	SOLID WASTE STABILIZATION & DISPOSITION <i>Total Completed with Recovery Act funding</i>
Repackage 850 m <sup>3</sup> of WIPP certifiable TRU waste Disposition 2,000 m <sup>3</sup> of contacted-handled TRU waste	<ul style="list-style-type: none"> <li>• 915 m<sup>3</sup> have been repackaged</li> <li>• 1,589 m<sup>3</sup> have been disposed</li> </ul>

A total of three drums were repackaged at T Plant this week. In conjunction with the Central Characterization Program, two TRUPACT-II shipments left the Hanford Site bound for the Waste Isolation Pilot Plant (WIPP), for a total of 188 shipments completed since shipments resumed in March 2010.

Three shipments (18.8 m<sup>3</sup>) were made from WRP to PFNW this week. The shipments included three boxes of TRU debris to be repackaged into standard waste boxes and returned to the Hanford Site for WIPP certification activities.



Photo 7

Workers load a box of transuranic debris onto a shipping container during swing shift to accommodate the shipping schedule. The box, as well as two other boxes from the Waste Retrieval Project, was shipped to Perma-Fix Northwest for repackaging into standard waste boxes. The repackaged waste will be returned to the Hanford Site to undergo Waste Isolation Pilot Plant certification.

## RL-0030 Soil & Groundwater Remediation, Groundwater/Vadose Zone

### RL-0030.R1: Central Plateau Soil & Groundwater

ACTIVITY	Week of May 27, 2011	Complete to Date with Recovery Act funds
Install 265 wells and/or boreholes along the river and in the Central Plateau	--	303
Decommission 280 old wells and boreholes that are no longer of service	7 wells completed	252
Construct the 200 West Groundwater Treatment Facility	71% complete	

#### 200 West Groundwater Treatment Facility

Recent construction of the process and transfer facilities included (listed by facility):

- *Process buildings*
  - **Radiological Building:** Ongoing activities include instrumentation and controls rough-in; process piping rough-in overhead as well as in the trenches; lighting and power conduits overhead; installation of exterior transformers; and rough-in heating, ventilation, and cooling units. Installation of steel insulation for sump pumps continued.



- Bio-Process Building: Installation of electrical panels, switchgear, fire alarm, lightning protection, and exterior transformers continued. Installation of the C- and A-line utility racks process piping continued. The fire protection wet system installation continued. Installation of epoxy coatings for the chemical storage room was completed. Monorail installation in the waste handling area continued. Installation of stairs/handrails for the mezzanines continued and installation of the mechanical pad for the main air handler unit was completed.
- Bio Pad: Installation of vapor off-gas ductwork and blower equipment continued as did installation of racks and panels, conduit, sleeves, cabling for lightning protection, and disconnects for an overhead crane. Installation of the overhead crane rails was completed.
- *Transfer buildings*
  - Extraction Building #1: Construction acceptance testing continued.
  - Extraction Building #2: Construction acceptance testing was initiated on mechanical, electrical, and process elements of the building.
  - Injection Building #1 & #2: Installation of service gears, piping, and/or pumps continued.

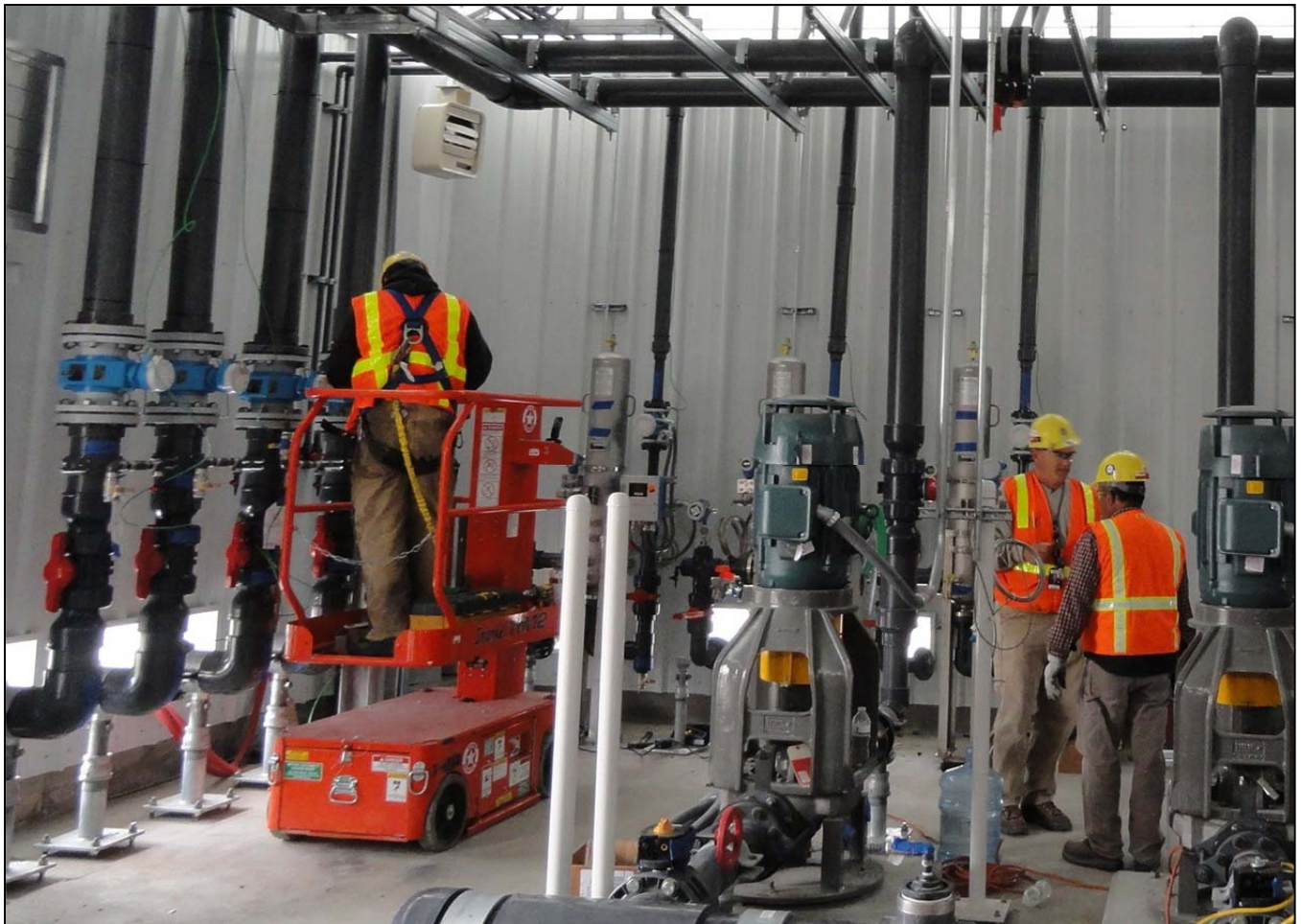


Photo 8

Construction acceptance testing continued on Extraction Building #2 at the 200 West Groundwater Treatment Facility construction site.



## RL-0040 Nuclear Facility D&D – Remainder of Hanford

RL-0040.R1.1: U Plant/Other D&D

### CENTRAL PLATEAU FACILITIES DEMOLISHED WITH RECOVERY ACT FUNDS

- |   |  |
|---|--|
| • 211U Cold Chemical Makeup Tank Farm           | • 2734EA Gas Cylinder Storage Bldg           |
| • 211UA Cold Chemical Makeup Tank Farm Addition | • 275E Carpenter Shop Bldg                   |
| • 203UX Gas Storage Facility                    | • MO104 Mobile Office                        |
| • 2701M Office Bldg                             | • MO405 Mobile Office                        |
| • 272E Fabrication, Mockup Shop Bldg            | • MO840 Mobile Office                        |
| • 2716E Power Maintenance Storage Bldg          | • X8 Motor Car Shed                          |
| • 2722W Welding Laboratory Bldg                 | • 224U UO3 Plant Concentration/Load-out Bldg |
| • 224UA UO3 Calcination/Load-out Facility       | • 284WB Package Boiler Plant                 |
| • 2710W Coal Handlers Shed*                     | • 209EA 90 Day Storage Pad*                  |
| • 2701EC 209-E Guard Station*                   | • 2902W Water Storage Tank*                  |
| • 2902E Water Storage Tank*                     |  |
|   | <b>TOTAL: 108,951 square feet</b>            |

### PLANNED FOR D&D/IN PROGRESS

- 284E Power House & Steam Plant
- 209E Critical Mass Laboratory
- 284W Power House & Steam Plant

\*Not part of the Key Performance Parameter

### *U Canyon*

CHPRC crews continued preparations to begin pouring grout into U Canyon cells, beginning with Cell 10. At 48 feet deep, Cell 10 is the deepest of the canyon cells, and beginning grout pours there will facilitate filling of canyon void spaces as grouting progresses throughout the canyon. Preparations also continued on a “mock-up” to simulate the removal of Tank D-10 from Cell 30 and its placement into a shipping cask.

### *U Plant Ancillary Facilities*

Closure documentation is being prepared.

### *200 East Core Industrial Area*

At the 284-E Power House demolition site, CHPRC demolition crews processed the first two of the structure’s remaining five boilers after using heavy equipment to cut away supports and lower the structures to the ground.



Photo 9

*Two of five boilers have been lowered and processed at the 284-E Power House.*

#### *200 West Area Industrial Facilities*

Asbestos abatement continued inside the 284-W Power House building.

#### *209-E Criticality Mass Laboratory*

After completing internal safety reviews, CHPRC crews are ready to begin cutting the first of 11 slab tanks in the facility. Size-reduction and removal of the tanks are the last major steps before the 209-E facility is downgraded to a Less Than Hazard Category 3 (non-nuclear) facility and ultimately demolished.

## RL-0040.R1.2: Outer Zone D&amp;D/Waste Sites

## OUTER ZONE FACILITIES DEMOLISHED WITH RECOVERY ACT FUNDS

212N Storage Building	6652M Fallout Laboratory
212P Electrical Storage & Transformer Shop	6652R Acid Storage Shed
212R Storage Building	6652C Space Science Laboratory
614 Monitor Station	6652CSHED Storage Building
646 Radioecology Field Laboratory	6652D Pump House
6652G ALE Field Storage Building	6652T Fire Protection Lower Pump House
6652H ALE Laboratory 1	6652U Rattlesnake Mountain Upper Pump House
6652I ALE Headquarters	623A Plant Radio Relay Bldg
6652J ALE Laboratory II	T520-6 Navy MARS Radio Station
6652S Sentry Shed*	6631 Radio Telescope Pedestal*
6634 ENW Tower and Building*	6630 Hodges Well Pumphouse*
6635 Crown Castle/Cingular Tower and Building *	6636 Columbia Communication Tower and Building*
6637 Tri City Amateur Radio Tower and Building*	6633 Franklin County Communication Building*
6632 Verizon Telephone Enclosure*	<b>TOTAL: 62,748 square feet</b>

\*Not part of the Key Performance Parameter

*North Slope Debris Removal*

Personnel with CHPRC subcontractor Sealaska Environmental Services have now completed cleanup of Areas 12, 13, 15, 16, and 18 as crews await the completion of cultural and environmental reviews of remaining debris sites.

*Arid Lands Ecology Reserve*

Revegetation of cleared sites on ALE is ongoing while closure documentation for removal of facilities from the area is prepared.

*D&D of Railcars Located on the 212-R Rail Spur*

CHPRC crews and subcontractor Clauss Construction are preparing to deliver the first of the well cask cars to the Environmental Restoration Disposal Facility (ERDF).

*Waste Sites*

The following table showcases CHPRC's recent progress in outer zone waste remediation.

WASTE SITE IN PROGRESS	TONS OF CONTAMINATED SOIL REMOVED	
	<i>Week Ending May 27, 2011</i>	<i>Total to Date with Recovery Act funds</i>
BC Control Area	12,500	435,900

Recent activities regarding the outer zone waste sites included (listed by operable unit or site):

- *200-MG-1*
  - 600-40: Excavation activities are complete. Backfill is ongoing.
  - 600-218: Remediation activities are complete, contingent on sampling. Sampling results are favorable, no backfill is required. Closure paperwork is in process.
  - 600-220: Sample results are favorable. Backfill is anticipated the week of May 31, 2011.
  - 600-228: Initial excavation activities are complete contingent upon sample results. Sampling is anticipated to occur on June 7, 2011.
  - 600-281: Field excavation activities are complete. Verification samples are being analyzed by the lab.
  - 600-282: Backfill is ongoing and is anticipated to be complete this week.
  - 216-S-19: Direct push test sampling is complete. Laboratory results of surface sampling were analyzed revealing some elevated levels of contamination above the remedial action levels. Additional excavation is anticipated in late May or June.



- 216-S-26: Initial excavation was completed pending sample validation last week. Sampling was performed on May 25, 2011.
- 200-W-147-PL: Excavation is complete. Backfill is under way.
- 600-49: Initial excavation field activities are complete contingent upon sample results. Sampling is anticipated to occur on June 7, 2011.
- *BC Control Area*
  - Radiological down-post surveys and localized spot removal are ongoing.

## RL-0041 Nuclear Facility D&D – River Corridor Closure Project

### RL-0041.R1.1: 100K Area Remediation

#### 100K AREA FACILITIES DEMOLISHED WITH RECOVERY ACT FUNDS

- |                                    |  |
|------------------------------------|--|
| ● 183KW Chlorine Vault             | ● 116KE Reactor Exhaust Stack          |
| ● 183.1KW Headhouse                | ● 118KE Horizontal Control Rod Storage |
| ● 183.2KW Sedimentation Basin      | ● MO048 Construction Lunch Trailer     |
| ● 183.3KW Filter Basin             | ● MO969 Ops/HPT Change Trailer         |
| ● 183.7 KW Pipe Tunnel             | ● 115KE Gas Recirculation              |
| ● 110KE Gas Storage Facility       | ● 185-K Potable Water Treatment Plant* |
| ● 117KE Exhaust Air Filter Bldg    |  |
| <b>TOTAL: 428, 260 square feet</b> |  |

\*Not part of the Key Performance Parameter

#### PLANNED FOR D&D/IN PROGRESS

- |                         |                          |
|-------------------------|--------------------------|
| ● 183.4KW Clearwell     | ● 190KE Main Pump House  |
| ● 190KW Main Pump House | ● 1605KE Guard House     |
| ● 183.4KE Clearwell     | ● 181KE River Pump House |

#### *Facility D&D*

At the 181-KE River Pumphouse Structure, CHPRC crews began size-reducing the structure's six 39,000-pound, 65-foot-long pumps for disposal. Demolition crews have begun work on the 183.3-KE Sand Filters, as demolition and loadout continued at both 120,000-square-foot 183.4-KE and 183.4-KW Clearwells. Size-reduction and loadout continued of below-ground structures at the site of the demolished 183.1-KE Headhouse.



Photo 10

*A CHPRC worker removes a piece of casing from one of the 65-foot-long pumps removed from the 181-KE River Pump House after cutting it with an oxygen torch. The pumps will be severed in several parts in preparation for their disposal.*



Photo 11

Demolition begins on the 183.3-KE Sand Filters, part of the K East Sedimentation Basins that once held 19 million gallons of water for use in the K East Reactor system.

#### *Infrastructure Utilities Upgrade Project*

The new A-9 substation is fully energized and awaiting switchover by site utilities organization.

#### *Waste Sites*

CHPRC continued excavating the 100-K-53 waste site, the 100-KE Glycol Heat Recovery Underground Pipelines, with a total of 20,899 tons removed to date. The project is awaiting sampling results for the 116-KE-1 waste site.

## UPCOMING EVENTS

### RL-0011 Nuclear Materials Stabilization & Disposition

RL-0011.R1: Plutonium Finishing Plant D&D

- Enlarge a doorway and transfer glovebox 188-1 to waste operations.
- Complete D&D and remove glovebox 179-1, the last remaining glovebox in the laboratory and backside vault areas.
- Remove or stabilize contaminated ventilation ductwork in 2736-ZB, deactivate the fire systems, complete electrical isolations, and transfer the 2736-Z vault complex to CHPRC D&D for demolition.



- D&D the remaining gloveboxes in the RMA/RMC Line process areas.
- Complete final area cleanout in the Standards, Analytical, and Plutonium Process Support Laboratory areas.
- Remove more than 250 contaminated HEPA filters from deactivated 234-5Z final filter rooms 311 and 316.
- Continue removing process vacuum piping, process transfer lines, and asbestos insulation from throughout 234-5Z building.

## RL-0013 Solid Waste Stabilization & Disposition

### RL-0013C:R1.1: MLLW Treatment

- Two MLLW shipments (62.1 m<sup>3</sup>) planned from the CWC and WRP to PFNW for treatment by macro-encapsulation.
- One MLLW shipment (8.7 m<sup>3</sup>) planned from WRP to PFNW for treatment by macro-encapsulation.

### RL-0013C:R1.2: TRU Waste

- TRU Retrieval
  - 3A burial ground
    - Ship Boxes 80 (43.5 m<sup>3</sup>) and 23 (54.4 m<sup>3</sup>) from Trench 17 to CWC.
    - Complete work package and begin repairs to Box 14 in Trench 17.
    - Remove, wrap, and ship contaminated stairs and complete final trench close-out surveys in Trench 8.
    - Continue container shipments from Trenches 8 and 17.
  - 4B/4C burial ground
    - Move crane from the 3A burial grounds to the 4B burial grounds for Trench 11 removal activities.
    - Remove two remaining remote-handled waste containers (3.6 m<sup>3</sup>) from Trench 11.
    - Remove large concrete box (46 m<sup>3</sup>) from 4B Trench 11.
    - Complete assay campaign #74.
  - 12B burial ground
    - Ship LLW to PFNW.
    - Remove waste drums from Trench 17.
    - Continue drum assay, venting, x-raying, and packaging waste for shipment.
- TRU Repackaging and Shipments
  - Three planned shipments.
- Suspect TRU Waste Shipments
  - No planned shipments for next week.

## RL-0030 Soil & Groundwater Remediation, Groundwater/Vadose Zone

### RL-0030.R1: Central Plateau Soil & Groundwater

- Continue construction of the 200 West Groundwater Treatment Facility.
- Continue well decommissioning.

## RL-0040 Nuclear Facility D&D – Remainder of Hanford

### RL-0040.R1.1: U Plant/Other D&D

- Begin pouring grout into Cell 10 of U Canyon.
- Begin “mock-up” preparations for the removal of Tank D-10 from Cell 30 in U Canyon.

- 
- Begin size-reduction of slab tanks inside the 209-E Criticality Mass Laboratory.
  - Continue demolition and processing of the five boilers at the 284-E Power House.

#### RL-0040.R1.2: Outer Zone D&D/Waste Sites

- Deliver the first of the well cask railcars to ERDF for disposal.
- Continue planning for and remediating 200-MG-1 waste sites.

### **RL-0041 Nuclear Facility D&D – River Corridor Closure Project**

#### RL-0041.R1.1: 100K Area Remediation

- Continue size-reduction of pumps removed from the 181-KE River Pumphouse.
- Continue loadout at the 183.4-KE and 183.4-KW Clearwells, and demolition of the 183.3-KE Sedimentation Basin sand filters.
- Continue excavating soil from and planning for remediation of 100K Area waste sites.