



River Corridor Closure Project

Recovery Act Weekly Report

September 15, 2009

Contract DE-AC06-05RL14655

Protecting the Columbia River

Overview

Background Summary of Projects that Washington Closure Hanford (WCH) will accomplish using ARRA funds (Pending definitization of scope and contract modifications).

A. The Environmental Remediation Disposal Facility (ERDF)

ERDF is the hub of the WCH contract and Other Hanford Contractors (OHC). Wastes collected from sites around the Hanford complex are brought to ERDF for treatment and disposal. WCH operates the ERDF and is currently using ARRA funds to upgrade and expand its capabilities to meet the needs of Hanford's accelerating mission. This report will provide written and visual evidence, weekly, of this expansion as it happens.

B. The 618-10 Burial Grounds

Long regarded as one of Hanford's worst waste sites are the trenches in 618-10. Using ARRA funds, WCH will characterize the site. Intrusive and non-intrusive techniques will be used, and the subsequent analysis of data will enable the project to pursue remediation of the site safely and effectively.

C. The 618-11 Burial Grounds

Along with 618-10 the 618-11 burial grounds are among the biggest challenges faced by WCH using ARRA funds. The 618-11 characterization work will require special care because of its proximity to the Energy Northwest Generating Facility, north of the 300 Area.

D. Remediation of failed Orphan Sites

WCH is employing ARRA funds to clean up many failed Orphan Sites not originally part of its contract. Sites in the 100-F and IU 2&6 segments 1&2 are proposed for waste site remediation in the two year period starting in October 2009.

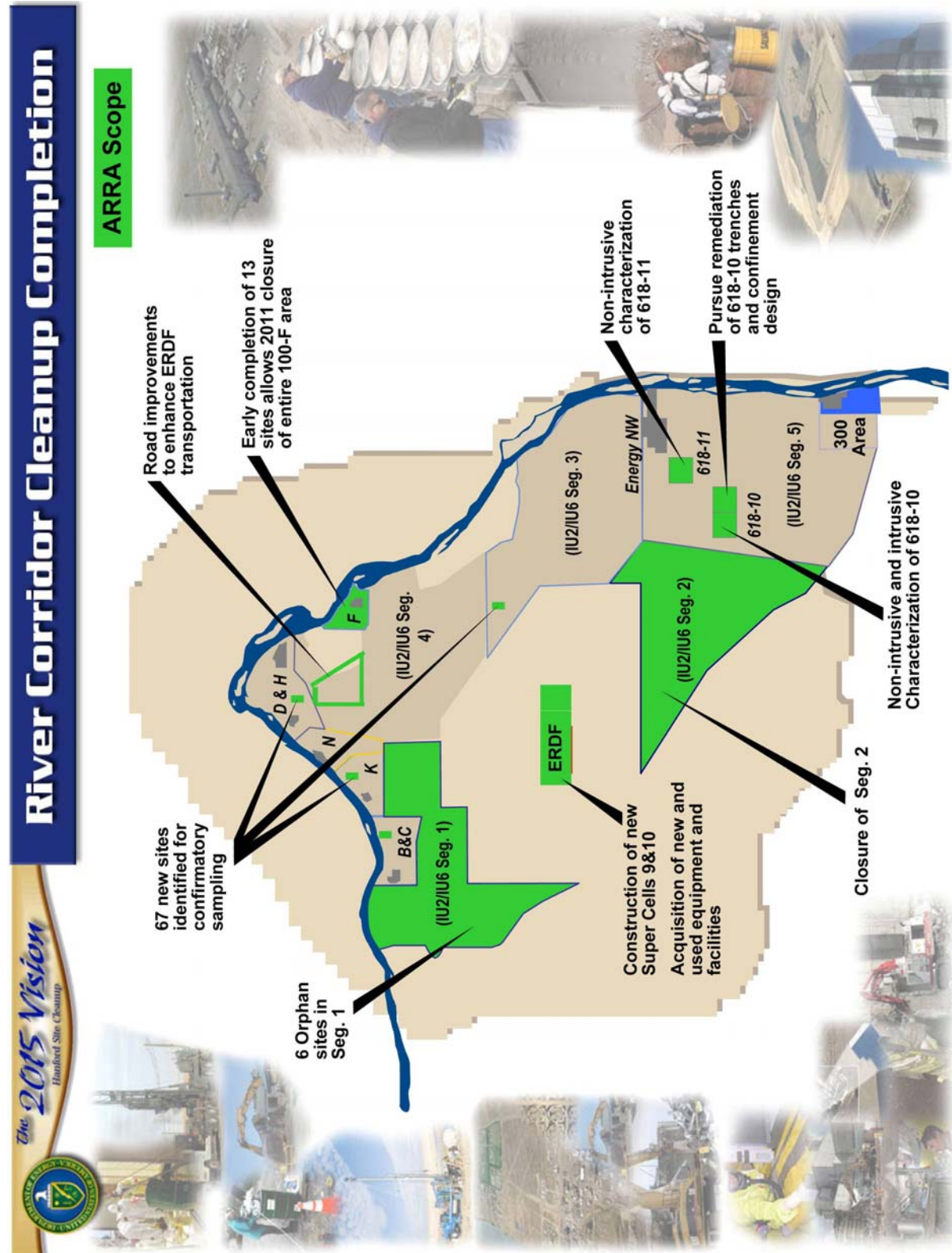
E. Confirmatory Sampling of other new sites

WCH is proposing to complete the early sampling process of 67 potential waste sites using ARRA funds.

The following figure illustrates the overall scope of WCH's ARRA projects.



Overview (Continued)



Safety

Safety Accomplishments

WCH has safely worked over 43,000 hours of ARRA scope, with no safety incidents as of September 13, 2009.

Hazard Reductions

WCH's Safety Ownership Program (SOP) was launched as a tool for the RCC project to focus on safety values. Safe work principles are organized under four SOP tenets:

Tenet 1: *Follow the Instruction*

Tenet 2: *Ask the Question*

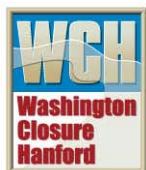
Tenet 3: *Fix it Now*

Tenet 4: *Own the Result.*

Last week, WCH kicked off awareness activities for the third SOP tenet; *Fix it Now*. This tenet focuses attention on the importance of addressing issues and problems raised by the workers as they arise. The Guiding Principles that support *Fix It Now* are:

1. Raise the issue
2. Understand the problem
3. Be part of the solution
4. Make it right before proceeding.

Tenet 3 features two 3-week activities, the first of which uses the Radiological Work Permit process to highlight the opportunity for each worker to be a part of the solution.

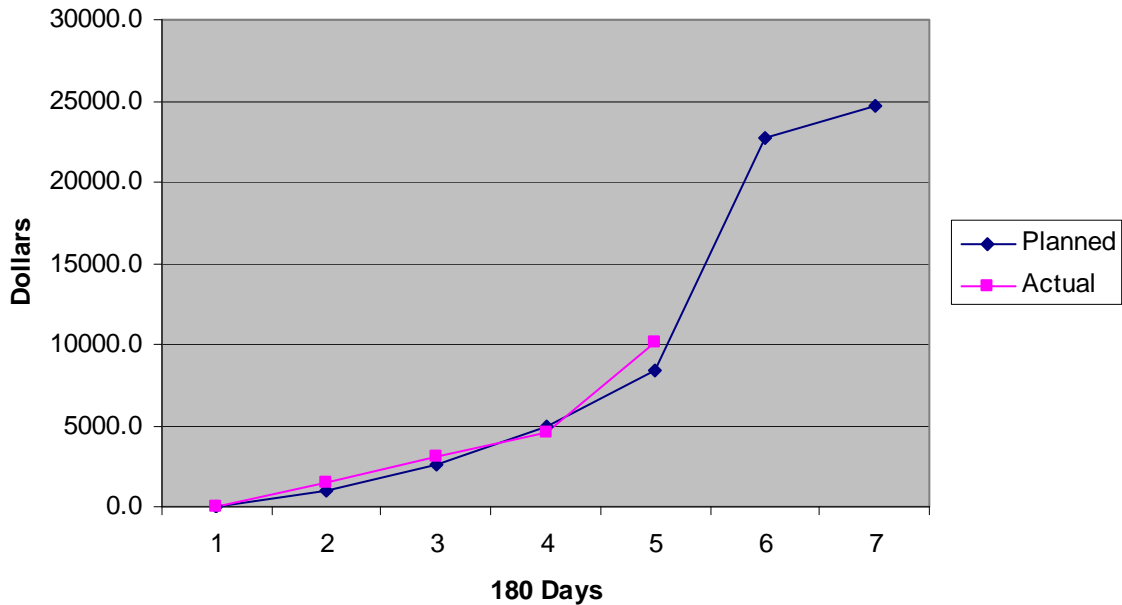


Cost

**180 Day Work Plan
Monthly Estimated Cost Plan Summary (K) Cumulative
Actuals as of August 23, 2009**

WBS	Scope		Apr 8th	May	Jun	Jul	Aug	Sep	Oct 8th
1.03.14.75.25-27	618-10 NIC/TRP	Planned	0.0	123.8	258.4	475.0	778.2	1466.6	1636.8
		Actual	0.0	392.4	648.1	1057.6	1873.4		
		Planned %			16%	29%	48%		
		Actual %			40%	65%	114%		
1.04.01.01.31	Super Cells 9&10 Construction	Planned	0.0	252.9	609.0	1498.1	2505.6	11582.5	12028.1
		Actual	0.0	753.9	1236.6	1633.8	3049.4		
		Planned %			5%	12%	21%		
		Actual %			10%	14%	25%		
1.04.01.01.37	ERDF Equipment Upgrades	Planned	0.0	0.0	0.0	0.0	0.0	1069.5	1515.1
		Actual	0.0	0.0	0.0	29.5	1909.7		
		Planned %			0%	0%	0%		
		Actual %			0%	2%	126%		
1.04.01.01.3B	ERDF Facility Upgrades	Planned	0.0	0.0	929.2	2191.0	4326.0	7774.7	8637.0
		Actual	0.0	0.0	509.8	861.0	2150.1		
		Planned %			11%	25%	50%		
		Actual %			6%	10%	25%		
1.06.01.01.02	Mission/General Support	Planned	40.3	571.5	766.7	778.7	791.5	809.1	813.5
		Actual	40.3	351.5	739.4	958.8	1141.1		
		Planned %			94%	96%	97%		
		Actual %			91%	118%	140%		
180 Day Work Plan	Total	Planned	40.3	948.2	2563.3	4942.8	8401.3	22702.4	24630.5
		Actual	40.3	1497.8	3133.9	4540.7	10123.6		
		Planned %			10%	20%	34%		
		Actual %			13%	18%	41%		

180 Day Work Plan (Planned vs Actual) Cumulative



WCH will report CPI and SPI at 1.00 until a contract modification approving the ARRA baseline is received and reconciled to the current baseline.



ERDF

Super Cells 9 and 10 Construction

Excavation of super cell 9 continued last week at the Environmental Restoration Disposal Facility (ERDF). To date, the subcontractor reported removal of 214,000 cubic yards.

A holding tank is now connected to a new water line to primarily provide water for dust control, construction activities, and future operation needs at ERDF.



A new water line and holding tank have been connected for dust suppression and future operational needs.

Facility and Equipment Upgrades

Work is underway to install a new scale with a new access route to ERDF for other Hanford contractors and WCH. The upgrades are necessary to accommodate increasing volumes of waste containers being shipped to ERDF from the Hanford Site.

ERDF (Continued)



Site preparation is underway for a new scale that will accommodate the increasing volume of containers from other Hanford contractors and WCH.

ERDF (Continued)



A worker prepares rebar cages for light pole installations near a new access road and container transfer area at ERDF.

Upcoming Activities

- Expect to receive trucks, bulldozers, and waste shipping containers in the coming weeks to support increasing volumes of contaminated waste.
- Excavation of super cell 9 will continue.
- Electrical and lighting installation to continue.

Video

[Click here to view the video showing super cell 9 excavation and relocation of material.](#)

618-10 Burial Ground

618-10 Non-Intrusive Characterization/Trench Remediation Project

The 618-10 project staff is reviewing subcontractor plans for characterizing the high hazard remediation project. Activities include reviewing and approval of the submitted plans. Support equipment continues to be staged and installed at the work site.

Record research continues this week so staff can supplement records obtained during initial design preparation.

Upcoming Activities

- Continue reviewing subcontractor submittal plans.
- Work site mobilization activities are underway.
- Record research continues for identifying and preparing for possible risks and hazards at the site.
- Mock up drill training is planned for reviewing future cone penetrometer installation activities.



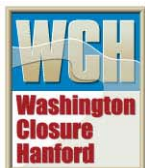
Mission Support/General Support

Accomplishments

- WCH completed the draft cost estimates for ARRA Phase II Cost Proposal – WCH-355 Volume 2. WCH also continued to support external reviews of the ARRA Phase I Technical and Cost Proposal (WCH-339, Volumes 1 and 2).
- WCH continued work on finalizing the Vision 2015 Roadmap and incorporating it into fiscal year 2010 and outyear Contractor Performance Planning to support DOE's goal of reducing the Hanford Site clean-up footprint.
- WCH kicked off to the workforce the third Safety Ownership Program Tenet; *Fix it Now*.

Upcoming Events

- Submit the draft Phase II Technical and Cost Proposal for DOE review (WCH-355, Volumes 1 and 2).
- Continue to work on finalizing the Vision 2015 Roadmap for planned issuance October 2009.



General

Job Fairs

WCH has completed the planning and begun its fall employee recruiting campaign. Teamed with its LLC parent companies, WCH will recruit at colleges, universities, and professional (including military) associations in the Pacific Northwest and other western states.

Refer to the EM Recovery Act Jobs Data Call spreadsheet for Jobs Creation/Saved as of September 4, 2009.

Hiring Actions

Jobs Created as of 9-4-09				
	Subcontractors	ROS	WCH	Total
Weekly	7	0	0	7
Total To Date	106	8	20	134

Subcontractor and ROS reflect total people working on ARRA and are not expressed in full-time equivalents (FTEs). Refer to the weekly EM Recovery Act Jobs Data Call spreadsheet for detailed report of Jobs Creation/Saved as of September 4, 2009.

Mentoring/Training

No significant mentoring activities this week.

Media, Visits, Press Releases

Pending reviews and approval from DOE, a media event is scheduled for the week of September 21 regarding the expansion and upgrades of the Environmental Restoration Disposal Facility.

Contracting Actions

No significant contracting actions this week.

