



U. S. Department of Transportation

Federal Highway Administration

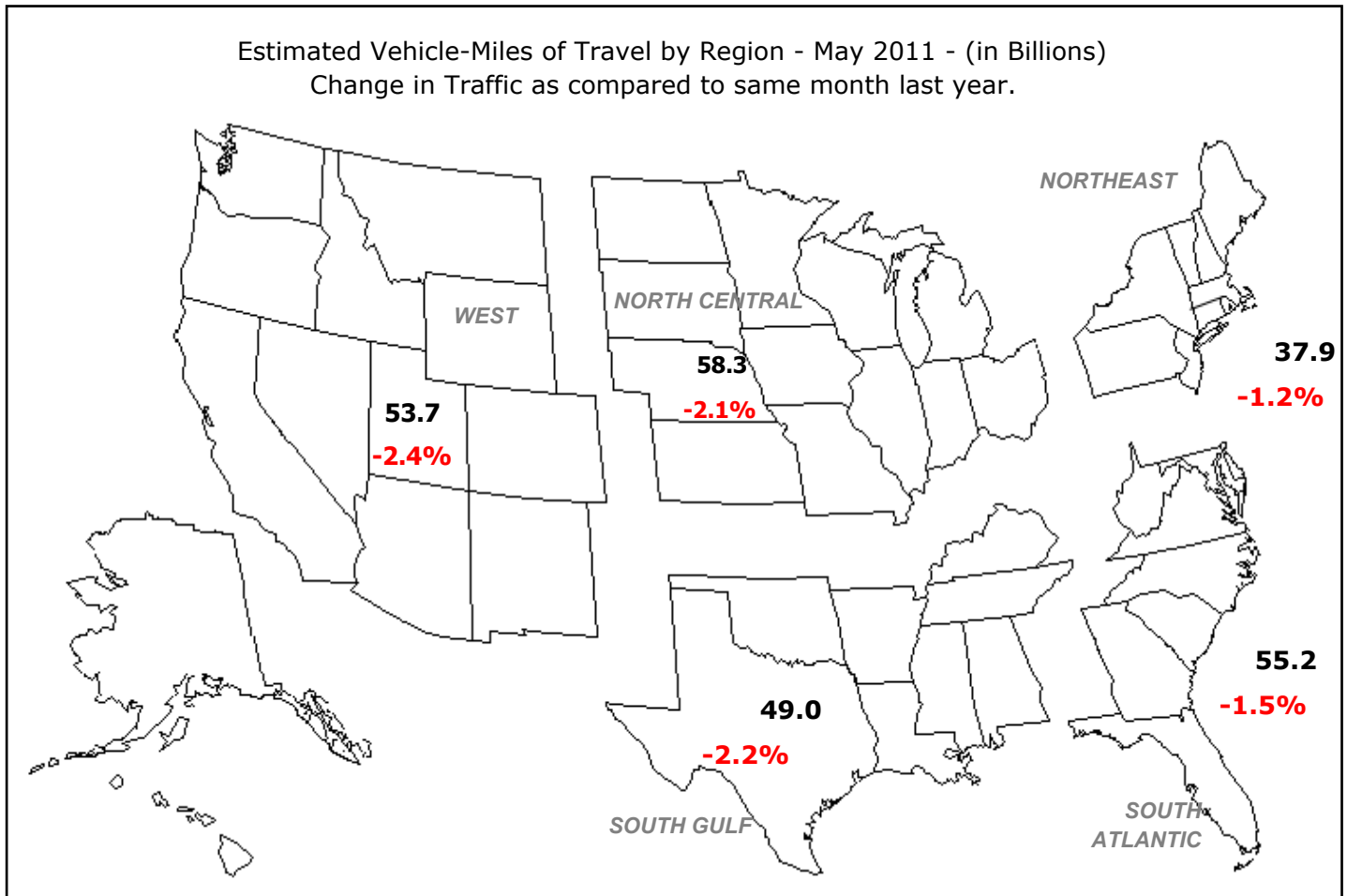
Office of Highway Policy Information

# TRAFFIC VOLUME TRENDS

## May 2011

Travel on all roads and streets changed by **-1.9%** (-5.0 billion vehicle miles) for May 2011 as compared with May 2010. Travel for the month is estimated to be 254.0 billion vehicle miles.

Cumulative Travel for 2011 changed by **-1.0%** (-11.7 billion vehicle miles). The Cumulative estimate for the year is 1,193.6 billion vehicle miles of travel.



Note: All data for this month are preliminary. Revised values for the previous month are shown in Tables 1 and 2.

All vehicle-miles of travel computed with 2009 Table VM-2 as a base.

Compiled with data on hand as of July 12, 2011.

Some historical data were revised based on HPMS and amended TVT data as of December 2009.

For information on total licensed drivers in the U.S. visit <http://www.fhwa.dot.gov/policy/ohpi/hss/hsspubs.htm>.

Select the year of interest then Section III (Driver Licensing).

For information on total registered motor vehicles in the U.S., visit <http://www.fhwa.dot.gov/policy/ohpi/hss/hsspubs.htm>

Select the year of interest and Section II (Motor Vehicles).

Based on preliminary reports from the State Highway Agencies, travel during May 2011 on all roads and streets in the nation changed by **-1.9** percent (-5.0 billion vehicle miles) resulting in estimated travel for the month at **254.0\*\*** billion vehicle-miles.

This total includes **84.7** billion vehicle-miles on rural roads and **169.3** billion vehicle-miles on urban roads and streets.

Cumulative Travel changed by **-1.0** percent (-11.7 billion vehicle miles).

The larger changes to rural and urban travel are primarily because of the expansion in urban boundaries reflected in the 2000 census. Travel estimates for 2004 and beyond will also reflect this adjustment.

Travel for the current month, the cumulative yearly total, as well as the moving 12-month total on all roads and streets is shown below. Similar totals for each year since 1986 are also included.

Travel in Millions of Vehicle Miles

All Roads and Streets

Year	May	Year to Date	Moving 12-Month
1986	160,459	718,443	1,800,933
1987	167,776	761,065	1,880,862
1988	178,042	803,309	1,966,572
1989	184,823	840,616	2,062,893
1990	189,247	864,210	2,130,634
1991	191,929	861,783	2,145,074
1992	196,725	894,428	2,204,858
1993	205,981	917,111	2,269,835
1994	206,594	933,949	2,313,543
1995	212,586	976,916	2,400,555
1996	218,676	988,128	2,433,987
1997	226,082	1,023,401	2,517,474
1998	227,899	1,044,079	2,581,051
1999	230,786	1,057,611	2,638,895
2000	242,557	1,105,644	2,727,492
2001	245,089	1,120,562	2,762,440
2002	251,219	1,147,787	2,822,836
2003	252,724	1,150,971	2,858,693
2004	256,235	1,193,611	2,932,863
2005	261,748	1,208,978	2,980,155
2006	262,444	1,222,837	3,003,289
2007	266,715	1,231,208	3,022,742
2008	260,983	1,220,750	3,020,666
2009	259,487	1,207,092	2,962,870
2010	258,991	1,205,295	2,975,798
2011	254,029	1,193,569	2,988,239

Traffic Volume Trends is a monthly report based on hourly traffic count data. These data, collected at approximately 4,000 continuous traffic counting locations nationwide, are used to determine the percent change in traffic for the current month compared to the same month in the previous year. This percent change is applied to the travel for the same month of the previous year to obtain an estimate of travel for the current month. Because of the limited sample sizes, caution should be used with these estimates. The Highway Performance Monitoring System provides more accurate information on an annual basis.

\*\* System entries may not add to give "All Systems" total due to rounding for Page 2 to 8.

**Table - 1. Estimated Individual Monthly Motor Vehicle Travel in the United States\*\***

System	Month											
	JAN	FEB	MAR	APR	MAY	JUN	JUL	AUG	SEP	OCT	NOV	DEC
2010 Individual Monthly Vehicle-Miles of Travel in Billions												
Rural Interstate	17.6	16.4	20.0	21.0	21.8	21.9	23.9	23.1	20.3	21.3	19.9	19.7
Rural Other Arterial	26.5	25.7	31.3	31.5	32.9	33.6	36.0	35.0	32.0	33.0	30.0	29.2
Other Rural	26.5	25.1	31.0	31.6	32.5	33.4	34.4	33.5	31.1	32.5	28.8	28.1
Urban Interstate	36.1	34.4	40.6	40.6	41.5	42.5	41.3	42.1	39.9	41.2	40.0	39.9
Urban Other Arterial	80.6	77.5	91.2	90.8	90.2	90.8	91.8	93.0	85.9	91.7	86.1	88.0
Other Urban	35.7	33.7	39.9	41.2	40.1	40.8	41.1	41.0	38.7	40.2	38.4	39.6
All Systems	223.0	212.8	253.9	256.6	259.0	262.9	268.5	267.6	247.9	260.0	243.1	244.6
2011 Individual Monthly Vehicle-Miles of Travel in Billions												
Rural Interstate	17.6	16.6	19.9	20.6	21.3							
Rural Other Arterial	26.8	26.0	30.6	30.5	32.1							
Other Rural	26.6	25.2	30.4	30.4	31.4							
Urban Interstate	36.3	34.6	40.6	39.9	41.0							
Urban Other Arterial	81.0	77.5	89.9	89.0	88.8							
Other Urban	35.8	34.2	39.5	40.2	39.6							
All Systems	224.1	214.1	250.9	250.5	254.0							
* Percent Change In Individual Monthly Travel 2010 vs. 2011												
Rural Interstate	0.3	0.8	-0.7	-2.0	-2.4							
Rural Other Arterial	1.3	0.9	-2.1	-3.3	-2.6							
Other Rural	0.3	0.4	-1.9	-3.7	-3.4							
Urban Interstate	0.4	0.7	0.0	-1.9	-1.3							
Urban Other Arterial	0.5	0.0	-1.4	-1.9	-1.6							
Other Urban	0.4	1.5	-0.8	-2.4	-1.2							
All Systems	0.5	0.6	-1.2	-2.4	-1.9							

**Table - 2. Estimated Cumulative Monthly Motor Vehicle Travel in the United States\*\***

System	Month											
	JAN	FEB	MAR	APR	MAY	JUN	JUL	AUG	SEP	OCT	NOV	DEC
2010 Cumulative Monthly Vehicle-Miles of Travel in Billions												
Rural Interstate	17.6	34.0	54.0	75.0	96.8	118.7	142.6	165.7	186.0	207.3	227.1	246.8
Rural Other Arterial	26.5	52.2	83.4	115.0	147.9	181.5	217.5	252.5	284.5	317.5	347.4	376.7
Other Rural	26.5	51.6	82.5	114.1	146.6	180.0	214.4	247.9	278.9	311.5	340.3	368.4
Urban Interstate	36.1	70.5	111.1	151.7	193.2	235.7	276.9	319.0	359.0	400.2	440.2	480.1
Urban Other Arterial	80.6	158.1	249.3	340.0	430.3	521.1	612.9	705.9	791.8	883.5	969.6	1057.7
Other Urban	35.7	69.4	109.3	150.5	190.6	231.4	272.4	313.4	352.1	392.4	430.8	470.4
All Systems	223.0	435.8	689.7	946.3	1205.3	1468.2	1736.7	2004.4	2252.3	2512.3	2755.4	3000.0
2011 Cumulative Monthly Vehicle-Miles of Travel in Billions												
Rural Interstate	17.6	34.2	54.1	74.7	95.9							
Rural Other Arterial	26.8	52.8	83.4	113.8	145.9							
Other Rural	26.6	51.8	82.1	112.5	143.9							
Urban Interstate	36.3	70.9	111.5	151.3	192.3							
Urban Other Arterial	81.0	158.5	248.4	337.4	426.1							
Other Urban	35.8	70.1	109.6	149.8	189.4							
All Systems	224.1	438.2	689.0	939.5	1193.6							
* Percent Change In Cumulative Monthly Travel 2010 vs. 2011												
Rural Interstate	0.3	0.6	0.1	-0.5	-0.9							
Rural Other Arterial	1.3	1.1	-0.1	-1.0	-1.3							
Other Rural	0.3	0.3	-0.5	-1.4	-1.8							
Urban Interstate	0.4	0.6	0.4	-0.2	-0.5							
Urban Other Arterial	0.5	0.2	-0.4	-0.8	-1.0							
Other Urban	0.4	0.9	0.3	-0.5	-0.6							
All Systems	0.5	0.5	-0.1	-0.7	-1.0							

\*Percent change is based on vehicle travel in millions of miles.

Table - 3. Changes on Rural Arterial Roads by Region and State\*\*

Region and State	May				April			
	Number of Stations	Vehicle-Miles (Millions)		Percent Change	Number of Stations	Vehicle-Miles (Millions)		Percent Change
		2011 (Preliminary)	2010			2011 (Revised)	2010	
<b>Northeast</b>								
Connecticut	5	173	184	-5.9	5	165	171	-3.5
Maine	67	494	515	-4.1	67	448	478	-6.4
Massachusetts	8	228	235	-2.7	8	212	223	-4.9
New Hampshire	28	290	301	-3.7	29	283	296	-4.3
New Jersey	22	348	357	-2.6	23	377	388	-3.0
New York	51	1,298	1,340	-3.1	54	1,139	1,181	-3.5
Pennsylvania	20	2,121	2,169	-2.2	20	1,989	2,073	-4.0
Rhode Island	-	56	58	-3.0	-	51	52	-3.3
Vermont	37	243	252	-3.6	39	221	228	-3.3
Subtotal		<b>5,251</b>	<b>5,411</b>	<b>-3.0</b>		<b>4,885</b>	<b>5,090</b>	<b>-4.0</b>
<b>South Atlantic</b>								
Delaware	24	151	157	-3.6	24	135	140	-3.5
District of Columbia	-	0	0	0.0	-	0	0	0.0
Florida	107	1,894	1,968	-3.8	105	2,017	2,068	-2.5
Georgia	78	1,914	1,946	-1.7	79	2,057	2,115	-2.7
Maryland	23	816	836	-2.4	24	723	758	-4.6
North Carolina	15	1,648	1,695	-2.8	16	1,575	1,622	-2.9
South Carolina	68	1,427	1,451	-1.6	70	1,358	1,381	-1.7
Virginia	218	1,842	1,880	-2.0	221	1,689	1,730	-2.4
West Virginia	-	417	427	-2.4	7	641	601	6.6
Subtotal		<b>10,109</b>	<b>10,360</b>	<b>-2.4</b>		<b>10,195</b>	<b>10,415</b>	<b>-2.1</b>
<b>North Central</b>								
Illinois	-	1,532	1,570	-2.4	-	1,366	1,404	-2.7
Indiana	32	1,382	1,410	-1.9	32	1,401	1,450	-3.3
Iowa	82	1,162	1,189	-2.2	81	1,074	1,107	-3.0
Kansas	66	858	889	-3.5	66	826	843	-2.1
Michigan	59	1,632	1,719	-5.0	59	1,528	1,629	-6.2
Minnesota	36	1,439	1,475	-2.4	37	1,352	1,413	-4.3
Missouri	77	1,605	1,654	-3.0	83	1,438	1,480	-2.9
Nebraska	36	762	785	-2.9	35	699	712	-1.8
North Dakota	28	377	368	2.5	28	345	345	0.1
Ohio	49	1,732	1,786	-3.0	49	1,656	1,709	-3.1
South Dakota	31	406	414	-1.9	30	387	390	-0.6
Wisconsin	84	1,785	1,828	-2.3	83	1,508	1,585	-4.9
Subtotal		<b>14,672</b>	<b>15,087</b>	<b>-2.8</b>		<b>13,580</b>	<b>14,067</b>	<b>-3.5</b>
<b>South Gulf</b>								
Alabama	-	1,467	1,504	-2.4	-	1,489	1,534	-2.9
Arkansas	28	988	1,036	-4.6	27	861	893	-3.5
Kentucky	26	1,491	1,516	-1.6	25	1,430	1,508	-5.2
Louisiana	10	991	978	1.3	15	955	982	-2.7
Mississippi	29	1,122	1,144	-1.9	16	1,101	1,132	-2.7
Oklahoma	-	1,110	1,138	-2.4	-	1,129	1,160	-2.7
Tennessee	6	1,661	1,692	-1.8	5	1,517	1,586	-4.4
Texas	110	3,929	3,994	-1.6	109	3,922	3,916	0.1
Subtotal		<b>12,759</b>	<b>13,002</b>	<b>-1.9</b>		<b>12,404</b>	<b>12,711</b>	<b>-2.4</b>
<b>West</b>								
Alaska	35	127	129	-1.0	35	101	102	-0.7
Arizona	-	998	1,022	-2.4	52	975	1,003	-2.8
California	24	3,701	3,810	-2.9	23	3,527	3,636	-3.0
Colorado	76	876	903	-3.0	76	840	845	-0.6
Hawaii	6	85	88	-2.6	6	101	102	-1.6
Idaho	-	459	470	-2.4	-	426	438	-2.7
Montana	61	480	489	-1.7	61	422	434	-2.8
Nevada	31	337	350	-3.8	30	321	326	-1.4
New Mexico	-	754	772	-2.4	-	723	742	-2.6
Oregon	103	902	933	-3.3	103	839	856	-1.9
Utah	45	488	503	-3.0	44	472	472	-0.1
Washington	64	908	927	-2.1	35	875	903	-3.0
Wyoming	-	413	423	-2.4	7	358	362	-1.0
Subtotal		<b>10,528</b>	<b>10,819</b>	<b>-2.7</b>		<b>9,980</b>	<b>10,221</b>	<b>-2.4</b>
<b>TOTALS</b>	<b>2,005</b>	<b>53,319</b>	<b>54,679</b>	<b>-2.5</b>	<b>2,043</b>	<b>51,044</b>	<b>52,504</b>	<b>-2.8</b>

Note: Where Number of Stations are shown as dashes, the values for the Vehicle-Miles and Percent Change are derived from the estimated VMT based on data from surrounding States or the nationwide average VMT.

Table - 4. Changes on Urban Arterial Roads by Region and State\*\*

Region and State	May				April			
	Number of Stations	Vehicle-Miles (Millions)		Percent Change	Number of Stations	Vehicle-Miles (Millions)		Percent Change
		2011 (Preliminary)	2010			2011 (Revised)	2010	
<b>Northeast</b>								
Connecticut	22	1,983	2,037	-2.6	22	1,754	1,801	-2.6
Maine	9	215	225	-4.6	9	196	210	-6.5
Massachusetts	55	3,326	3,397	-2.1	57	2,950	3,062	-3.6
New Hampshire	25	471	481	-2.2	26	477	490	-2.6
New Jersey	80	4,401	4,462	-1.4	71	4,397	4,533	-3.0
New York	92	6,718	6,815	-1.4	93	6,322	6,473	-2.3
Pennsylvania	15	4,385	4,346	0.9	15	4,167	4,306	-3.2
Rhode Island	42	559	576	-3.0	37	495	512	-3.3
Vermont	16	110	112	-1.9	16	101	105	-3.4
Subtotal		<b>22,168</b>	<b>22,451</b>	<b>-1.3</b>		<b>20,859</b>	<b>21,492</b>	<b>-2.9</b>
<b>South Atlantic</b>								
Delaware	17	369	380	-2.7	19	373	383	-2.6
District of Columbia	-	238	241	-1.5	1	239	222	7.6
Florida	133	8,582	8,714	-1.5	134	8,553	8,631	-0.9
Georgia	102	4,386	4,448	-1.4	99	4,299	4,392	-2.1
Maryland	38	3,181	3,197	-0.5	38	2,944	3,010	-2.2
North Carolina	20	3,963	3,978	-0.4	22	3,622	3,718	-2.6
South Carolina	36	1,664	1,673	-0.5	34	1,702	1,722	-1.1
Virginia	297	3,562	3,652	-2.5	302	3,492	3,625	-3.7
West Virginia	-	478	485	-1.4	3	528	593	-10.9
Subtotal		<b>26,423</b>	<b>26,768</b>	<b>-1.3</b>		<b>25,752</b>	<b>26,296</b>	<b>-2.1</b>
<b>North Central</b>								
Illinois	-	5,239	5,319	-1.5	-	5,227	5,332	-2.0
Indiana	29	2,545	2,585	-1.6	29	2,623	2,692	-2.6
Iowa	35	820	840	-2.4	34	792	828	-4.3
Kansas	19	994	1,015	-2.1	19	1,017	1,057	-3.8
Michigan	46	4,530	4,558	-0.6	52	4,441	4,524	-1.8
Minnesota	26	2,226	2,179	2.2	27	2,192	2,194	-0.1
Missouri	56	2,477	2,532	-2.2	62	2,322	2,416	-3.9
Nebraska	13	587	581	1.0	13	576	577	-0.1
North Dakota	8	130	128	1.6	8	139	141	-1.8
Ohio	89	4,703	4,781	-1.6	88	4,393	4,533	-3.1
South Dakota	10	238	244	-2.3	9	221	225	-1.9
Wisconsin	66	2,243	2,245	-0.1	67	2,119	2,253	-5.9
Subtotal		<b>26,732</b>	<b>27,007</b>	<b>-1.0</b>		<b>26,062</b>	<b>26,772</b>	<b>-2.7</b>
<b>South Gulf</b>								
Alabama	-	1,566	1,591	-1.6	-	1,555	1,585	-1.9
Arkansas	11	1,003	1,065	-5.8	10	918	947	-3.0
Kentucky	4	1,372	1,418	-3.2	5	1,367	1,409	-3.0
Louisiana	6	1,596	1,656	-3.6	8	1,783	1,840	-3.1
Mississippi	18	981	988	-0.7	15	1,019	1,030	-1.1
Oklahoma	-	1,601	1,625	-1.5	-	1,643	1,676	-2.0
Tennessee	6	2,734	2,794	-2.1	9	2,792	2,905	-3.9
Texas	92	11,789	11,912	-1.0	95	11,359	11,398	-0.3
Subtotal		<b>22,642</b>	<b>23,049</b>	<b>-1.8</b>		<b>22,436</b>	<b>22,790</b>	<b>-1.6</b>
<b>West</b>								
Alaska	44	182	186	-1.9	44	175	178	-1.3
Arizona	-	3,106	3,154	-1.5	12	3,003	3,073	-2.3
California	35	18,516	19,025	-2.7	12	20,380	20,521	-0.7
Colorado	22	2,139	2,225	-3.9	21	2,398	2,432	-1.4
Hawaii	25	287	287	0.0	25	388	388	0.0
Idaho	-	388	394	-1.5	-	382	390	-1.9
Montana	5	150	150	-0.6	5	133	133	-0.5
Nevada	31	1,024	1,030	-0.6	31	994	996	-0.2
New Mexico	-	706	718	-1.7	-	684	696	-1.8
Oregon	28	1,206	1,222	-1.3	29	1,164	1,182	-1.5
Utah	43	1,068	1,083	-1.3	43	1,120	1,132	-1.1
Washington	47	2,838	2,826	0.4	26	2,819	2,806	0.5
Wyoming	-	136	139	-1.6	-	132	129	2.8
Subtotal		<b>31,746</b>	<b>32,439</b>	<b>-2.1</b>		<b>33,772</b>	<b>34,056</b>	<b>-0.8</b>
<b>TOTALS</b>	<b>1,813</b>	<b>129,711</b>	<b>131,714</b>	<b>-1.5</b>	<b>1,796</b>	<b>128,881</b>	<b>131,406</b>	<b>-1.9</b>

Note: Where Number of Stations are shown as dashes, the values for the Vehicle-Miles and Percent Change are derived from the estimated VMT based on data from surrounding States or the nationwide average VMT.

Table - 5. Changes on ALL\* Estimated Roads by Region and State\*\*

Region and State	May				April			
	Number of Stations	Vehicle-Miles (Millions)		Percent Change	Number of Stations	Vehicle-Miles (Millions)		Percent Change
		2011 (Preliminary)	2010			2011 (Revised)	2010	
<b>Northeast</b>								
Connecticut	28	2,776	2,860	-2.9	28	2,487	2,559	-2.8
Maine	106	1,221	1,275	-4.2	106	1,105	1,184	-6.7
Massachusetts	63	4,554	4,654	-2.2	65	4,065	4,222	-3.7
New Hampshire	57	1,059	1,092	-3.0	59	1,057	1,096	-3.5
New Jersey	106	6,225	6,277	-0.8	97	6,158	6,328	-2.7
New York	162	11,758	11,851	-0.8	166	10,839	11,169	-3.0
Pennsylvania	42	8,902	8,910	-0.1	44	8,490	8,828	-3.8
Rhode Island	42	722	745	-3.0	37	639	660	-3.3
Vermont	69	652	673	-3.1	69	546	561	-2.8
Subtotal		<b>37,869</b>	<b>38,337</b>	<b>-1.2</b>		<b>35,386</b>	<b>36,607</b>	<b>-3.3</b>
<b>South Atlantic</b>								
Delaware	67	767	792	-3.1	69	765	790	-3.2
District of Columbia	-	337	341	-1.1	1	332	309	7.6
Florida	247	15,989	16,326	-2.1	246	16,223	16,411	-1.1
Georgia	221	9,574	9,700	-1.3	219	9,611	9,829	-2.2
Maryland	63	4,996	5,047	-1.0	64	4,602	4,734	-2.8
North Carolina	59	10,880	10,988	-1.0	62	10,926	11,197	-2.4
South Carolina	112	4,315	4,357	-1.0	112	4,239	4,325	-2.0
Virginia	528	7,079	7,219	-1.9	536	6,803	7,052	-3.5
West Virginia	-	1,284	1,316	-2.4	10	1,669	1,696	-1.6
Subtotal		<b>55,221</b>	<b>56,086</b>	<b>-1.5</b>		<b>55,170</b>	<b>56,343</b>	<b>-2.1</b>
<b>North Central</b>								
Illinois	-	9,166	9,340	-1.9	-	8,892	9,113	-2.4
Indiana	73	6,696	6,812	-1.7	75	6,910	7,124	-3.0
Iowa	143	2,785	2,851	-2.3	141	2,606	2,725	-4.4
Kansas	96	2,547	2,660	-4.2	96	2,474	2,589	-4.5
Michigan	107	8,163	8,349	-2.2	113	7,824	8,132	-3.8
Minnesota	71	5,024	5,079	-1.1	72	4,770	4,888	-2.4
Missouri	143	5,954	6,109	-2.5	154	5,547	5,769	-3.8
Nebraska	59	1,749	1,766	-0.9	58	1,653	1,673	-1.2
North Dakota	40	744	733	1.5	41	719	707	1.7
Ohio	151	9,406	9,677	-2.8	151	8,947	9,336	-4.2
South Dakota	48	841	867	-3.0	47	780	794	-1.7
Wisconsin	156	5,193	5,271	-1.5	156	4,735	5,016	-5.6
Subtotal		<b>58,268</b>	<b>59,514</b>	<b>-2.1</b>		<b>55,857</b>	<b>57,866</b>	<b>-3.5</b>
<b>South Gulf</b>								
Alabama	-	4,896	5,025	-2.6	-	4,960	5,104	-2.8
Arkansas	42	2,768	2,926	-5.4	42	2,640	2,742	-3.7
Kentucky	35	4,225	4,327	-2.4	35	4,084	4,282	-4.6
Louisiana	21	3,559	3,639	-2.2	31	3,767	3,855	-2.3
Mississippi	51	3,545	3,615	-2.0	33	3,596	3,710	-3.1
Oklahoma	-	4,121	4,209	-2.1	-	4,077	4,188	-2.7
Tennessee	13	5,874	6,015	-2.3	15	5,869	6,114	-4.0
Texas	237	19,963	20,274	-1.5	238	19,602	19,673	-0.4
Subtotal		<b>48,951</b>	<b>50,030</b>	<b>-2.2</b>		<b>48,595</b>	<b>49,668</b>	<b>-2.2</b>
<b>West</b>								
Alaska	90	464	472	-1.6	90	423	428	-1.3
Arizona	-	5,482	5,589	-1.9	81	5,311	5,438	-2.3
California	59	26,379	27,113	-2.7	35	28,395	28,690	-1.0
Colorado	99	3,843	3,990	-3.7	97	4,121	4,170	-1.2
Hawaii	31	614	617	-0.6	31	801	804	-0.3
Idaho	-	1,291	1,331	-3.0	-	1,231	1,268	-2.9
Montana	76	920	921	-0.2	76	808	815	-0.8
Nevada	77	1,770	1,798	-1.5	76	1,724	1,733	-0.5
New Mexico	-	2,215	2,286	-3.1	-	2,086	2,144	-2.7
Oregon	139	2,887	2,958	-2.4	140	2,669	2,712	-1.6
Utah	92	2,179	2,220	-1.8	92	2,281	2,299	-0.8
Washington	113	4,872	4,904	-0.7	62	4,864	4,899	-0.7
Wyoming	-	802	823	-2.5	8	774	755	2.4
Subtotal		<b>53,718</b>	<b>55,022</b>	<b>-2.4</b>		<b>55,488</b>	<b>56,155</b>	<b>-1.2</b>
<b>TOTALS</b>	<b>4,234</b>	<b>254,029</b>	<b>258,991</b>	<b>-1.9</b>	<b>4,276</b>	<b>250,496</b>	<b>256,640</b>	<b>-2.4</b>

Note: Where Number of Stations are shown as dashes, the values for the Vehicle-Miles and Percent Change are derived from the estimated VMT based on data from surrounding States or the nationwide average VMT. \* All Estimated roads include travel from Table 3 and 4 plus remaining roads.

Table - 6. Estimated Rural Vehicle Miles (Millions) and Percent Change from Same Period Previous Year\*\*

Year - 2010														
	<u>Rural Interstate</u>	<u>%</u>	<u>Rural Other Arterial</u>	<u>%</u>	<u>Other Rural</u>	<u>%</u>	<u>Total Rural</u>	<u>%</u>	<u>All Systems</u>	<u>%</u>				
Jan	17,588	-0.1	Jan	26,472	-2.1	Jan	26,524	-1.5	Jan	70,584	-1.4	Jan	222,952	-1.7
Feb	16,440	-1.5	Feb	25,724	-2.6	Feb	25,051	-3.7	Feb	67,214	-2.8	Feb	212,849	-2.9
Mar	20,009	3.2	Mar	31,252	3.2	Mar	30,975	2.6	Mar	82,236	3.0	Mar	253,863	2.2
Q1	54,037	0.7	Q1	83,448	-0.4	Q1	82,549	-0.7	Q1	220,034	-0.2	Q1	689,664	-0.7
Apr	20,980	3.0	Apr	31,524	2.1	Apr	31,571	1.7	Apr	84,076	2.2	Apr	256,640	1.3
May	21,781	1.0	May	32,895	0.0	May	32,492	-0.2	May	87,168	0.1	May	258,991	-0.2
Jun	21,861	2.8	Jun	33,596	1.4	Jun	33,375	0.9	Jun	88,832	1.5	Jun	262,894	1.1
Q2	64,621	2.2	Q2	98,015	1.1	Q2	97,438	0.8	Q2	260,075	1.3	Q2	778,525	0.7
1st Half	118,658	1.5	1st Half	181,463	0.4	1st Half	179,988	0.1	1st Half	480,109	0.6	1st Half	1,468,189	0.1
Jul	23,945	2.7	Jul	36,014	1.2	Jul	34,404	1.0	Jul	94,363	1.5	Jul	268,528	0.7
Aug	23,075	2.4	Aug	34,981	1.6	Aug	33,500	1.4	Aug	91,556	1.8	Aug	267,648	1.8
Sep	20,301	2.8	Sep	32,041	1.8	Sep	31,057	1.1	Sep	83,399	1.8	Sep	247,945	1.6
Q3	67,321	2.6	Q3	103,037	1.5	Q3	98,960	1.2	Q3	269,318	1.7	Q3	784,122	1.4
Oct	21,274	3.9	Oct	32,969	3.2	Oct	32,539	3.0	Oct	86,781	3.3	Oct	260,004	2.1
Nov	19,873	1.8	Nov	29,966	1.4	Nov	28,779	0.8	Nov	78,618	1.3	Nov	243,085	1.4
Dec	19,674	1.4	Dec	29,245	1.3	Dec	28,100	0.0	Dec	77,019	0.9	Dec	244,566	0.8
Q4	60,821	2.4	Q4	92,180	2.0	Q4	89,417	1.3	Q4	242,418	1.9	Q4	747,655	1.5
2nd Half	128,142	2.5	2nd Half	195,216	1.8	2nd Half	188,378	1.3	2nd Half	511,736	1.8	2nd Half	1,531,776	1.4
<b>Year</b>	<b>246,801</b>	<b>2.0</b>	<b>Year</b>	<b>376,679</b>	<b>1.1</b>	<b>Year</b>	<b>368,365</b>	<b>0.7</b>	<b>Year</b>	<b>991,845</b>	<b>1.2</b>	<b>Year</b>	<b>2,999,965</b>	<b>0.8</b>

Year - 2011														
	<u>Rural Interstate</u>	<u>%</u>	<u>Rural Other Arterial</u>	<u>%</u>	<u>Other Rural</u>	<u>%</u>	<u>Total Rural</u>	<u>%</u>	<u>All Systems</u>	<u>%</u>				
Jan	17,646	0.3	Jan	26,815	1.3	Jan	26,593	0.3	Jan	71,055	0.7	Jan	224,123	0.5
Feb	16,575	0.8	Feb	25,964	0.9	Feb	25,158	0.4	Feb	67,696	0.7	Feb	214,056	0.6
Mar	19,874	-0.7	Mar	30,585	-2.1	Mar	30,375	-1.9	Mar	80,834	-1.7	Mar	250,865	-1.2
Q1	54,095	0.1	Q1	83,364	-0.1	Q1	82,126	-0.5	Q1	219,585	-0.2	Q1	689,044	-0.1
Apr	20,562	-2.0	Apr	30,483	-3.3	Apr	30,406	-3.7	Apr	81,450	-3.1	Apr	250,496	-2.4
May	21,265	-2.4	May	32,054	-2.6	May	31,384	-3.4	May	84,703	-2.8	May	254,029	-1.9
Jun			Jun			Jun			Jun			Jun		
Q2	41,827	-2.2	Q2	62,537	-2.9	Q2	61,789	-3.5	Q2	166,153	-3.0	Q2	504,525	-2.2
1st Half	95,922	-0.9	1st Half	145,901	-1.3	1st Half	143,915	-1.8	1st Half	385,738	-1.4	1st Half	1,193,569	-1.0
Jul			Jul			Jul			Jul			Jul		
Aug			Aug			Aug			Aug			Aug		
Sep			Sep			Sep			Sep			Sep		
Q3		0.0	Q3		0.0	Q3		0.0	Q3		0.0	Q3		0.0
Oct			Oct			Oct			Oct			Oct		
Nov			Nov			Nov			Nov			Nov		
Dec			Dec			Dec			Dec			Dec		
Q4		0.0	Q4		0.0	Q4		0.0	Q4		0.0	Q4		0.0
2nd Half		0.0	2nd Half		0.0	2nd Half		0.0	2nd Half		0.0	2nd Half		0.0
<b>Year</b>	<b>95,922</b>	<b>-0.9</b>	<b>Year</b>	<b>145,901</b>	<b>-1.3</b>	<b>Year</b>	<b>143,915</b>	<b>-1.8</b>	<b>Year</b>	<b>385,738</b>	<b>-1.4</b>	<b>Year</b>	<b>1,193,569</b>	<b>-1.0</b>

Table - 7. Estimated Urban Vehicle Miles (Millions) and Percent Change from Same Period Previous Year\*\*

<b>Year - 2010</b>														
<u>Urban Interstate</u> %			<u>Urban Other Arterial</u> %			<u>Other Urban</u> %			<u>Total Urban</u> %			<u>All Systems</u> %		
Jan	36,127	-1.1	Jan	80,571	-1.9	Jan	35,670	-2.5	Jan	152,368	-1.9	Jan	222,952	-1.7
Feb	34,392	-2.3	Feb	77,499	-2.5	Feb	33,744	-4.6	Feb	145,635	-2.9	Feb	212,849	-2.9
Mar	40,566	2.3	Mar	91,181	2.1	Mar	39,881	0.9	Mar	171,627	1.9	Mar	253,863	2.2
Q1	111,084	-0.3	Q1	249,251	-0.7	Q1	109,294	-2.0	Q1	469,629	-0.9	Q1	689,664	-0.7
Apr	40,610	1.2	Apr	90,792	1.0	Apr	41,162	0.5	Apr	172,564	0.9	Apr	256,640	1.3
May	41,486	0.0	May	90,229	-0.2	May	40,109	-1.0	May	171,824	-0.4	May	258,991	-0.2
Jun	42,473	1.0	Jun	90,797	0.9	Jun	40,793	0.4	Jun	174,062	0.8	Jun	262,894	1.1
Q2	124,569	0.7	Q2	271,818	0.6	Q2	122,064	0.0	Q2	518,451	0.5	Q2	778,525	0.7
1st Half	235,653	0.3	1st Half	521,069	0.0	1st Half	231,359	-1.0	1st Half	988,080	-0.2	1st Half	1,468,189	0.1
Jul	41,254	0.6	Jul	91,846	0.4	Jul	41,065	-0.2	Jul	174,165	0.3	Jul	268,528	0.7
Aug	42,118	2.5	Aug	92,994	1.8	Aug	40,980	1.1	Aug	176,092	1.8	Aug	267,648	1.8
Sep	39,949	2.1	Sep	85,856	1.4	Sep	38,741	1.2	Sep	164,546	1.5	Sep	247,945	1.6
Q3	123,320	1.7	Q3	270,697	1.2	Q3	120,786	0.7	Q3	514,803	1.2	Q3	784,122	1.4
Oct	41,239	2.2	Oct	91,739	1.1	Oct	40,245	2.0	Oct	173,223	1.6	Oct	260,004	2.1
Nov	39,955	2.3	Nov	86,114	1.1	Nov	38,398	1.6	Nov	164,467	1.5	Nov	243,085	1.4
Dec	39,902	1.5	Dec	88,034	0.7	Dec	39,612	0.2	Dec	167,547	0.8	Dec	244,566	0.8
Q4	121,096	2.0	Q4	265,887	1.0	Q4	118,254	1.3	Q4	505,237	1.3	Q4	747,655	1.5
2nd Half	244,416	1.9	2nd Half	536,585	1.1	2nd Half	239,040	1.0	2nd Half	1,020,040	1.2	2nd Half	1,531,776	1.4
<b>Year</b>	<b>480,068</b>	<b>1.1</b>	<b>Year</b>	<b>1,057,653</b>	<b>0.5</b>	<b>Year</b>	<b>470,399</b>	<b>0.0</b>	<b>Year</b>	<b>2,008,120</b>	<b>0.5</b>	<b>Year</b>	<b>2,999,965</b>	<b>0.8</b>

<b>Year - 2011</b>														
<u>Urban Interstate</u> %			<u>Urban Other Arterial</u> %			<u>Other Urban</u> %			<u>Total Urban</u> %			<u>All Systems</u> %		
Jan	36,286	0.4	Jan	80,958	0.5	Jan	35,824	0.4	Jan	153,068	0.5	Jan	224,123	0.5
Feb	34,632	0.7	Feb	77,493	0.0	Feb	34,235	1.5	Feb	146,360	0.5	Feb	214,056	0.6
Mar	40,577	0.0	Mar	89,909	-1.4	Mar	39,545	-0.8	Mar	170,031	-0.9	Mar	250,865	-1.2
Q1	111,494	0.4	Q1	248,359	-0.4	Q1	109,605	0.3	Q1	469,458	0.0	Q1	689,044	-0.1
Apr	39,851	-1.9	Apr	89,028	-1.9	Apr	40,167	-2.4	Apr	169,046	-2.0	Apr	250,496	-2.4
May	40,957	-1.3	May	88,754	-1.6	May	39,615	-1.2	May	169,326	-1.5	May	254,029	-1.9
Jun			Jun			Jun			Jun			Jun		
Q2	80,808	-1.6	Q2	177,782	-1.8	Q2	79,782	-1.8	Q2	338,372	-1.7	Q2	504,525	-2.2
1st Half	192,302	-0.5	1st Half	426,141	-1.0	1st Half	189,387	-0.6	1st Half	807,830	-0.8	1st Half	1,193,569	-1.0
Jul			Jul			Jul			Jul			Jul		
Aug			Aug			Aug			Aug			Aug		
Sep			Sep			Sep			Sep			Sep		
Q3		0.0	Q3		0.0	Q3		0.0	Q3		0.0	Q3		0.0
Oct			Oct			Oct			Oct			Oct		
Nov			Nov			Nov			Nov			Nov		
Dec			Dec			Dec			Dec			Dec		
Q4		0.0	Q4		0.0	Q4		0.0	Q4		0.0	Q4		0.0
2nd Half		0.0	2nd Half		0.0	2nd Half		0.0	2nd Half		0.0	2nd Half		0.0
<b>Year</b>	<b>192,302</b>	<b>-0.5</b>	<b>Year</b>	<b>426,141</b>	<b>-1.0</b>	<b>Year</b>	<b>189,387</b>	<b>-0.6</b>	<b>Year</b>	<b>807,830</b>	<b>-0.8</b>	<b>Year</b>	<b>1,193,569</b>	<b>-1.0</b>



Figure - 1. Moving 12-Month Total on ALL Roads

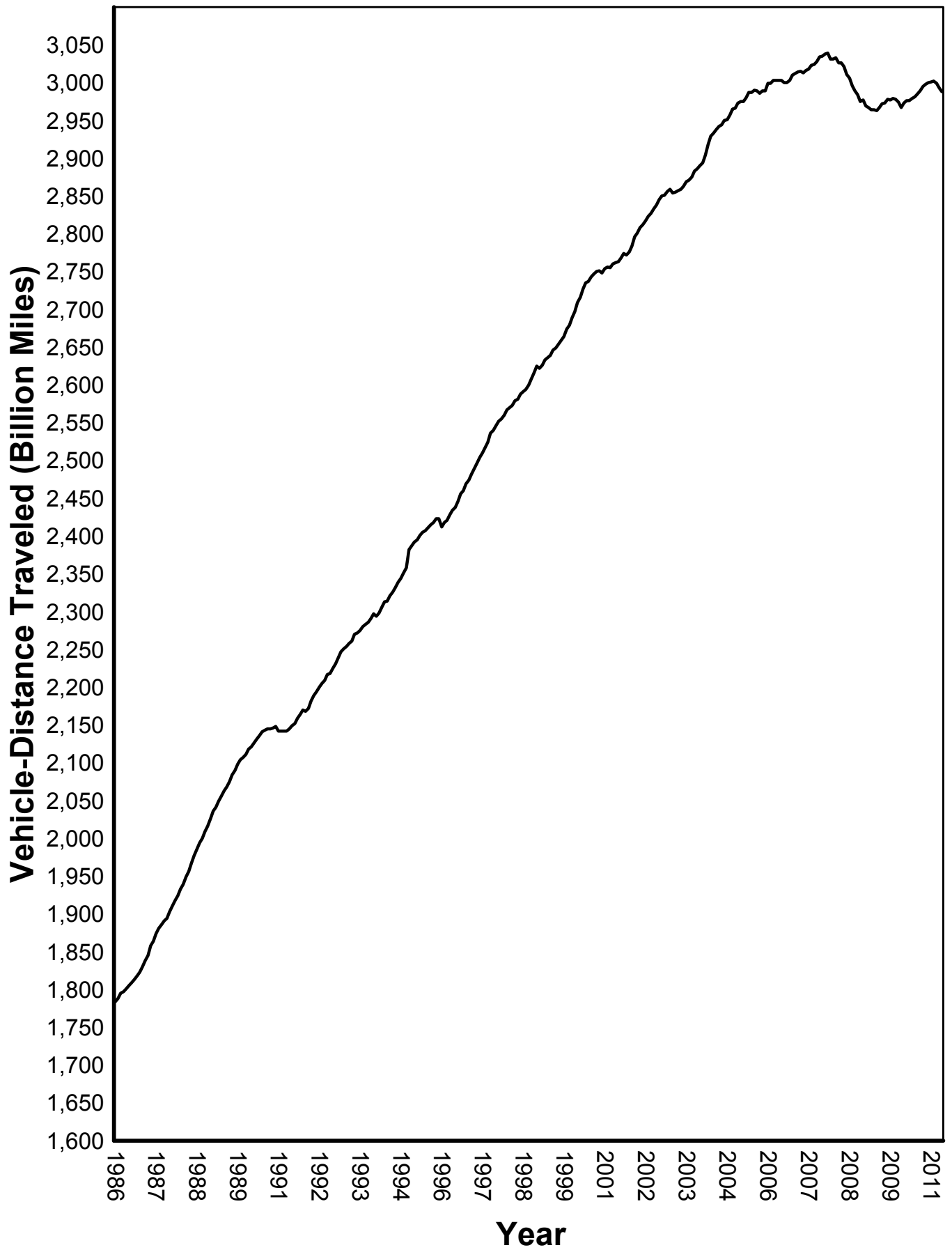
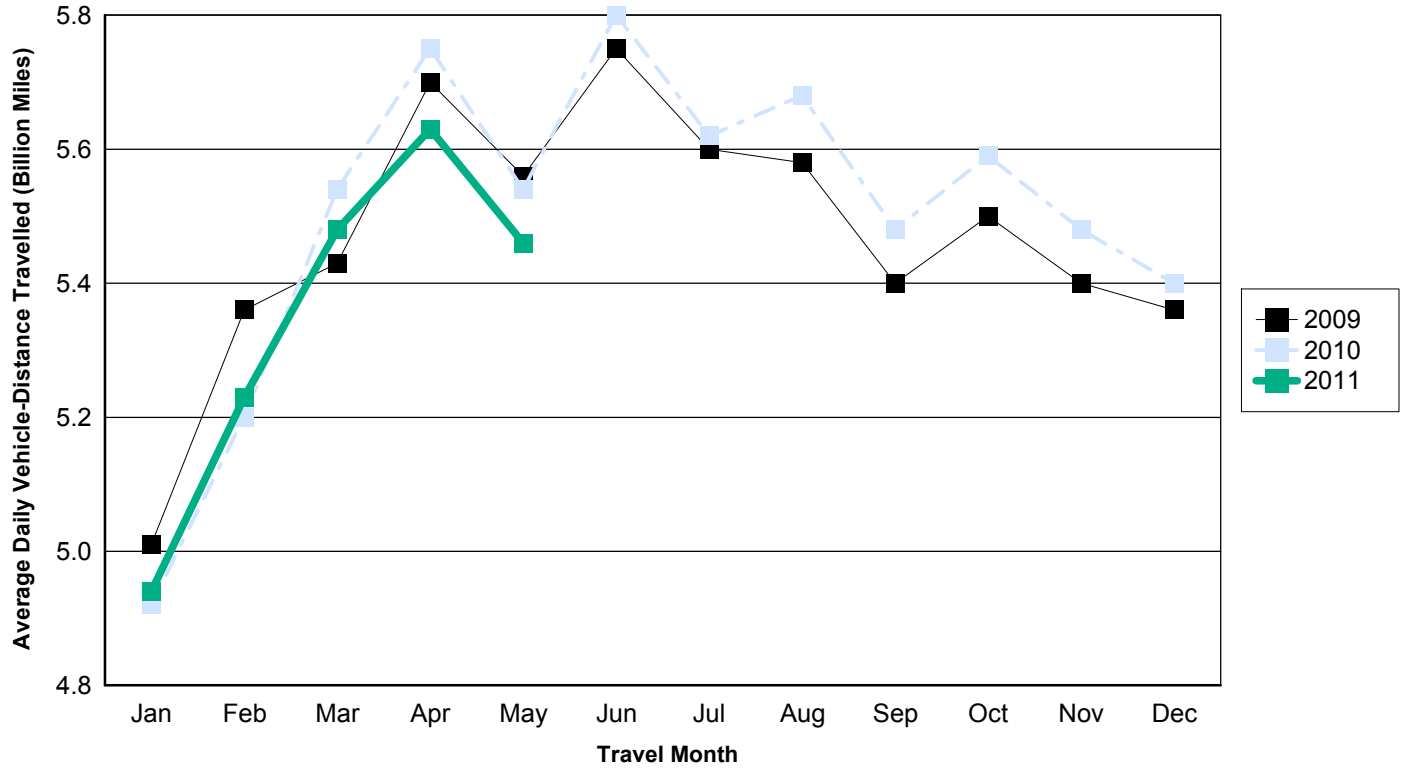


Figure - 2. Travel on U.S. Highways by Month

Urban Highways



Rural Highways

