



U. S. Department of Transportation

Federal Highway Administration

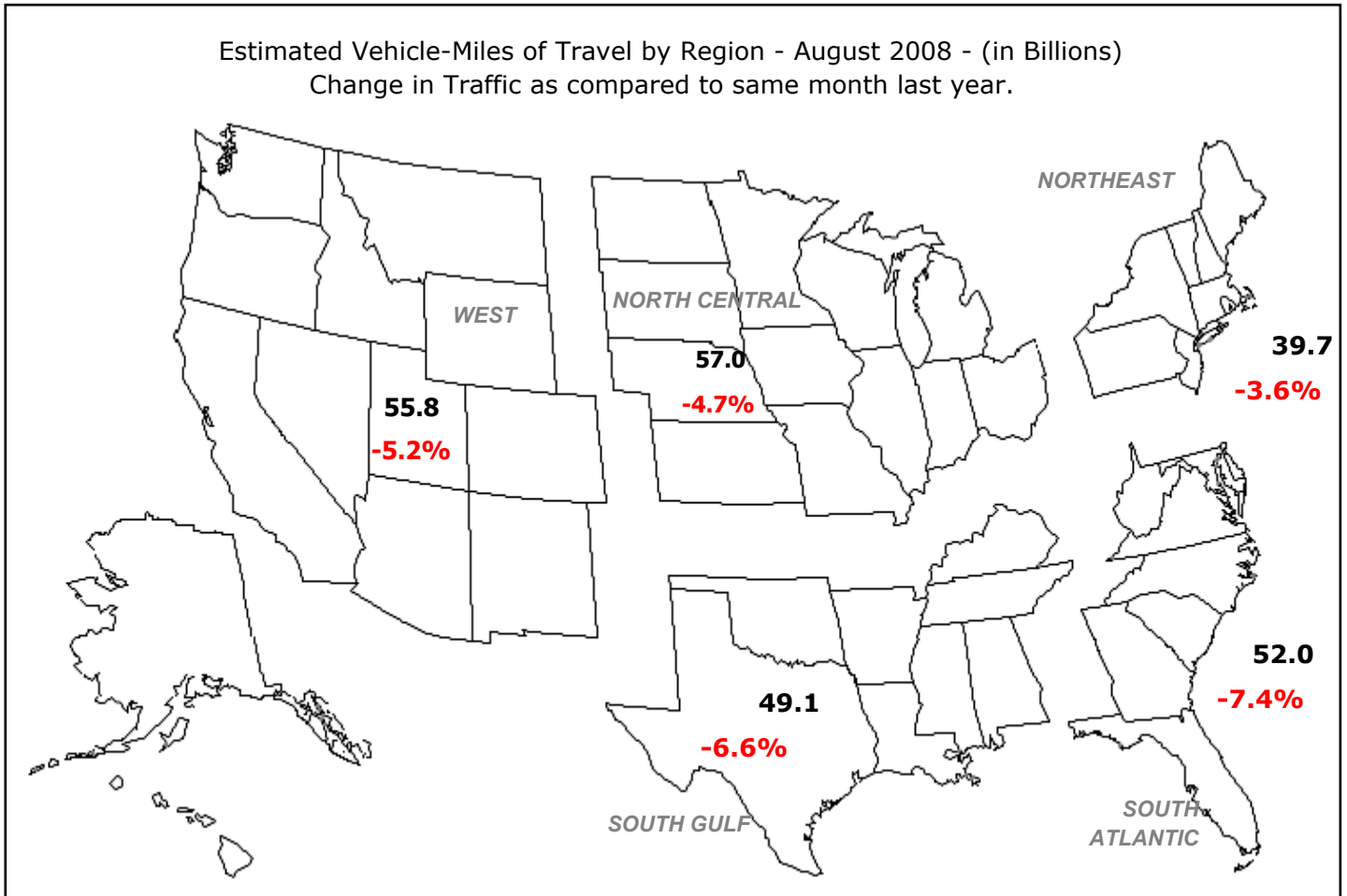
Office of Highway Policy Information

# TRAFFIC VOLUME TRENDS

## August 2008

Travel on all roads and streets changed by **-5.6%** (-15.0 billion vehicle miles) for August 2008 as compared with August 2007. Travel for the month is estimated to be 253.7 billion vehicle miles.

Cumulative Travel for 2008 changed by **-3.3%** (-67.2 billion vehicle miles). The Cumulative estimate for the year is 1,945.5 billion vehicle miles of travel.



Note: All data for this month are preliminary. Revised values for the previous month are shown in Tables 1 and 2.

All vehicle-miles of travel computed with 2006 Table VM-2 as a base.

Compiled with data on hand as of October 01, 2008.

Some historical data were revised based on HPMS and amended TVT data as of May 2008.

For information on total licensed drivers in the U.S. visit <http://www.fhwa.dot.gov/policy/ohpi/hss/hsspubs.htm>.

Select the year of interest then Section III (Driver Licensing).

For information on total registered motor vehicles in the U.S., visit <http://www.fhwa.dot.gov/policy/ohpi/hss/hsspubs.htm>

Select the year of interest and Section II (Motor Vehicles).

Based on preliminary reports from the State Highway Agencies, travel during August 2008 on all roads and streets in the nation changed by **-5.6** percent (-15.0 billion vehicle miles) resulting in estimated travel for the month at **253.7\*\*** billion vehicle-miles.

This total includes **90.2** billion vehicle-miles on rural roads and **163.5** billion vehicle-miles on urban roads and streets.

Cumulative Travel changed by **-3.3** percent (-67.2 billion vehicle miles).

The larger changes to rural and urban travel are primarily because of the expansion in urban boundaries reflected in the 2000 census. Travel estimates for 2004 and beyond will also reflect this adjustment.

Travel for the current month, the cumulative yearly total, as well as the moving 12-month total on all roads and streets is shown below. Similar totals for each year since 1983 are also included.

Travel in Millions of Vehicle Miles

All Roads and Streets

Year	August	Year to Date	Moving 12-Month
1983	157,649	1,101,649	1,630,940
1984	164,920	1,149,718	1,697,177
1985	169,437	1,187,295	1,754,347
1986	173,977	1,225,904	1,813,371
1987	177,378	1,282,053	1,894,389
1988	184,503	1,351,281	1,993,556
1989	194,172	1,409,867	2,084,172
1990	197,057	1,446,267	2,143,440
1991	204,063	1,457,700	2,158,934
1992	204,753	1,503,029	2,217,543
1993	209,634	1,535,998	2,280,121
1994	215,045	1,571,053	2,331,760
1995	219,216	1,624,692	2,411,226
1996	229,050	1,657,838	2,455,922
1997	233,496	1,715,864	2,540,227
1998	237,143	1,749,898	2,594,407
1999	241,503	1,778,200	2,653,665
2000	247,832	1,841,325	2,742,583
2001	253,265	1,868,119	2,773,718
2002	258,638	1,911,257	2,838,687
2003	260,624	1,926,123	2,870,128
2004	262,941	1,980,397	2,943,950
2005	265,460	2,005,306	2,989,076
2006	264,695	2,010,095	2,993,522
2007	268,680	2,012,704	3,008,183
2008	253,684	1,945,498	2,929,272

Traffic Volume Trends is a monthly report based on hourly traffic count data. These data, collected at approximately 4,000 continuous traffic counting locations nationwide, are used to determine the percent change in traffic for the current month compared to the same month in the previous year. This percent change is applied to the travel for the same month of the previous year to obtain an estimate of travel for the current month. Because of the limited sample sizes, caution should be used with these estimates. The Highway Performance Monitoring System provides more accurate information on an annual basis.

\*\* System entries may not add to give "All Systems" total due to rounding for Page 2 to 8.

**Table - 1. Estimated Individual Monthly Motor Vehicle Travel in the United States\*\***

System	Month											
	JAN	FEB	MAR	APR	MAY	JUN	JUL	AUG	SEP	OCT	NOV	DEC
2007 Individual Monthly Vehicle-Miles of Travel in Billions												
Rural Interstate	18.9	17.6	21.4	21.5	22.9	22.8	24.1	24.3	21.1	21.9	21.0	20.1
Rural Other Arterial	28.9	27.4	33.1	32.3	34.9	35.0	36.9	36.8	33.1	34.3	31.6	30.1
Other Rural	28.2	26.2	32.2	31.3	34.0	34.2	34.6	34.7	31.5	33.0	29.5	28.1
Urban Interstate	37.3	34.7	40.4	39.7	42.2	42.1	40.5	41.7	38.8	40.7	39.4	37.8
Urban Other Arterial	83.3	78.2	91.6	87.9	91.9	90.9	90.4	93.1	83.8	91.6	86.2	85.5
Other Urban	34.3	32.1	37.7	36.9	38.4	37.4	37.6	38.2	35.2	37.3	35.7	36.6
All Systems	230.9	216.2	256.5	249.6	264.2	262.4	264.1	268.7	243.6	258.7	243.3	238.2
2008 Individual Monthly Vehicle-Miles of Travel in Billions												
Rural Interstate	18.5	17.4	20.8	20.3	22.0	21.3	22.8	22.8				
Rural Other Arterial	28.4	27.3	31.5	31.3	33.4	32.9	35.4	34.8				
Other Rural	27.7	26.0	30.2	30.8	32.4	32.3	33.1	32.7				
Urban Interstate	36.8	34.5	39.0	39.2	40.7	40.5	39.3	39.7				
Urban Other Arterial	82.0	78.0	87.7	87.5	88.7	86.8	87.6	87.9				
Other Urban	34.0	32.0	36.0	36.5	36.9	36.0	36.4	35.9				
All Systems	227.3	215.3	245.1	245.6	254.1	249.9	254.5	253.7				
* Percent Change In Individual Monthly Travel 2007 vs. 2008												
Rural Interstate	-2.0	-1.1	-2.8	-5.6	-3.8	-6.7	-5.4	-6.2				
Rural Other Arterial	-1.8	-0.4	-4.8	-3.0	-4.1	-6.0	-4.3	-5.5				
Other Rural	-2.0	-0.9	-6.3	-1.9	-4.8	-5.4	-4.6	-5.7				
Urban Interstate	-1.2	-0.6	-3.6	-1.1	-3.5	-3.7	-3.0	-4.9				
Urban Other Arterial	-1.6	-0.2	-4.4	-0.5	-3.5	-4.5	-3.0	-5.6				
Other Urban	-1.1	-0.2	-4.6	-1.1	-3.8	-3.6	-3.0	-6.0				
All Systems	-1.6	-0.5	-4.4	-1.6	-3.8	-4.7	-3.6	-5.6				

**Table - 2. Estimated Cumulative Monthly Motor Vehicle Travel in the United States\*\***

System	Month											
	JAN	FEB	MAR	APR	MAY	JUN	JUL	AUG	SEP	OCT	NOV	DEC
2007 Cumulative Monthly Vehicle-Miles of Travel in Billions												
Rural Interstate	18.9	36.5	57.9	79.5	102.3	125.2	149.3	173.6	194.6	216.5	237.5	257.6
Rural Other Arterial	28.9	56.2	89.3	121.6	156.4	191.4	228.4	265.2	298.3	332.6	364.1	394.2
Other Rural	28.2	54.5	86.7	118.1	152.1	186.3	220.9	255.6	287.1	320.2	349.6	377.7
Urban Interstate	37.3	72.0	112.4	152.1	194.2	236.3	276.8	318.5	357.3	398.0	437.4	475.2
Urban Other Arterial	83.3	161.6	253.2	341.1	433.1	524.0	614.3	707.4	791.2	882.9	969.1	1054.5
Other Urban	34.3	66.4	104.1	141.0	179.4	216.7	254.3	292.5	327.7	364.9	400.6	437.2
All Systems	230.9	447.2	703.6	953.3	1217.5	1479.9	1744.0	2012.7	2256.3	2515.0	2758.3	2996.5
2008 Cumulative Monthly Vehicle-Miles of Travel in Billions												
Rural Interstate	18.5	35.9	56.7	77.1	99.1	120.4	143.2	165.9				
Rural Other Arterial	28.4	55.6	87.1	118.4	151.9	184.8	220.1	254.9				
Other Rural	27.7	53.7	83.9	114.7	147.0	179.4	212.4	245.1				
Urban Interstate	36.8	71.3	110.3	149.5	190.2	230.7	270.0	309.7				
Urban Other Arterial	82.0	160.0	247.7	335.1	423.9	510.7	598.3	686.2				
Other Urban	34.0	66.0	101.9	138.4	175.3	211.4	247.8	283.7				
All Systems	227.3	442.6	687.7	933.2	1187.4	1437.3	1691.8	1945.5				
* Percent Change In Cumulative Monthly Travel 2007 vs. 2008												
Rural Interstate	-2.0	-1.6	-2.1	-3.0	-3.2	-3.8	-4.1	-4.4				
Rural Other Arterial	-1.8	-1.1	-2.5	-2.6	-2.9	-3.5	-3.6	-3.9				
Other Rural	-2.0	-1.5	-3.2	-2.9	-3.3	-3.7	-3.8	-4.1				
Urban Interstate	-1.2	-0.9	-1.9	-1.7	-2.1	-2.4	-2.5	-2.8				
Urban Other Arterial	-1.6	-0.9	-2.2	-1.7	-2.1	-2.5	-2.6	-3.0				
Other Urban	-1.1	-0.6	-2.1	-1.8	-2.2	-2.5	-2.6	-3.0				
All Systems	-1.6	-1.0	-2.3	-2.1	-2.5	-2.9	-3.0	-3.3				

\*Percent change is based on vehicle travel in millions of miles.

Table - 3. Changes on Rural Arterial Roads by Region and State\*\*

Region and State	August				July			
	Number of Stations	Vehicle-Miles (Millions)		Percent Change	Number of Stations	Vehicle-Miles (Millions)		Percent Change
		2008 (Preliminary)	2007			2008 (Revised)	2007	
<b>Northeast</b>								
Connecticut	8	176	186	-5.8	8	181	193	-6.1
Maine	44	535	580	-7.8	-	559	587	-4.8
Massachusetts	9	230	263	-12.6	8	269	278	-3.4
New Hampshire	22	370	391	-5.5	20	355	377	-5.8
New Jersey	5	376	392	-4.0	4	354	374	-5.2
New York	52	1,534	1,601	-4.2	53	1,441	1,498	-3.8
Pennsylvania	31	2,332	2,391	-2.5	31	2,297	2,354	-2.4
Rhode Island	-	66	68	-2.0	-	62	60	1.8
Vermont	28	291	306	-5.1	-	282	295	-4.2
Subtotal		<b>5,910</b>	<b>6,178</b>	<b>-4.3</b>		<b>5,800</b>	<b>6,016</b>	<b>-3.6</b>
<b>South Atlantic</b>								
Delaware	-	159	166	-4.4	-	168	176	-4.5
District of Columbia	-	0	0	0.0	-	0	0	0.0
Florida	90	1,855	2,138	-13.2	89	1,902	2,081	-8.6
Georgia	40	1,852	1,999	-7.4	55	2,107	2,222	-5.2
Maryland	23	859	908	-5.4	22	845	889	-5.0
North Carolina	-	1,676	1,809	-7.4	-	1,759	1,860	-5.4
South Carolina	75	1,409	1,523	-7.5	75	1,466	1,564	-6.3
Virginia	102	1,896	2,015	-5.9	101	1,918	2,023	-5.2
West Virginia	-	657	691	-4.9	-	647	678	-4.4
Subtotal		<b>10,363</b>	<b>11,249</b>	<b>-7.9</b>		<b>10,812</b>	<b>11,493</b>	<b>-5.9</b>
<b>North Central</b>								
Illinois	5	1,634	1,681	-2.8	2	1,676	1,711	-2.1
Indiana	42	1,530	1,589	-3.7	43	1,744	1,785	-2.3
Iowa	79	1,215	1,239	-1.9	79	1,198	1,230	-2.6
Kansas	65	833	887	-6.1	60	836	879	-4.8
Michigan	54	1,803	1,869	-3.6	54	1,746	1,847	-5.5
Minnesota	31	1,718	1,770	-3.0	30	1,627	1,708	-4.7
Missouri	79	2,109	2,194	-3.9	80	2,081	2,184	-4.7
Nebraska	31	749	779	-3.9	30	767	792	-3.1
North Dakota	30	355	355	-0.1	31	385	382	0.9
Ohio	41	1,799	1,878	-4.2	42	1,770	1,822	-2.9
South Dakota	30	442	469	-5.7	31	444	466	-4.8
Wisconsin	75	1,768	1,821	-2.9	77	1,738	1,839	-5.5
Subtotal		<b>15,955</b>	<b>16,531</b>	<b>-3.5</b>		<b>16,012</b>	<b>16,645</b>	<b>-3.8</b>
<b>South Gulf</b>								
Alabama	-	1,382	1,532	-9.8	-	1,469	1,568	-6.3
Arkansas	26	1,136	1,213	-6.3	27	1,168	1,209	-3.4
Kentucky	52	1,351	1,465	-7.8	52	1,408	1,529	-7.9
Louisiana	-	1,072	1,139	-5.9	-	966	997	-3.1
Mississippi	-	1,103	1,194	-7.7	-	1,156	1,211	-4.5
Oklahoma	-	1,270	1,348	-5.7	-	1,175	1,214	-3.2
Tennessee	8	1,678	1,831	-8.4	6	1,787	1,887	-5.3
Texas	79	4,697	4,976	-5.6	78	4,733	4,875	-2.9
Subtotal		<b>13,689</b>	<b>14,698</b>	<b>-6.9</b>		<b>13,862</b>	<b>14,490</b>	<b>-4.3</b>
<b>West</b>								
Alaska	29	134	139	-3.6	27	139	150	-7.4
Arizona	34	947	1,032	-8.2	46	1,042	1,119	-6.9
California	8	3,948	4,246	-7.0	26	4,010	4,250	-5.6
Colorado	60	1,031	1,076	-4.2	45	1,030	1,079	-4.5
Hawaii	-	118	125	-5.9	3	116	124	-6.2
Idaho	-	531	565	-6.2	91	525	561	-6.5
Montana	45	587	625	-6.1	46	596	636	-6.3
Nevada	30	369	396	-6.9	31	383	412	-7.1
New Mexico	42	797	853	-6.5	45	782	829	-5.7
Oregon	90	1,071	1,164	-7.9	89	1,043	1,125	-7.3
Utah	33	564	589	-4.3	32	563	590	-4.6
Washington	48	1,034	1,092	-5.3	42	989	1,051	-5.9
Wyoming	-	487	512	-5.0	-	491	517	-5.1
Subtotal		<b>11,618</b>	<b>12,414</b>	<b>-6.4</b>		<b>11,709</b>	<b>12,443</b>	<b>-5.9</b>
<b>TOTALS</b>	<b>1,675</b>	<b>57,535</b>	<b>61,070</b>	<b>-5.8</b>	<b>1,711</b>	<b>58,195</b>	<b>61,087</b>	<b>-4.7</b>

Note: Where Number of Stations are shown as dashes, the values for the Vehicle-Miles and Percent Change are derived from the estimated VMT based on data from surrounding States or the nationwide average VMT.

Table - 4. Changes on Urban Arterial Roads by Region and State\*\*

Region and State	August				July			
	Number of Stations	Vehicle-Miles (Millions)		Percent Change	Number of Stations	Vehicle-Miles (Millions)		Percent Change
		2008 (Preliminary)	2007			2008 (Revised)	2007	
<b>Northeast</b>								
Connecticut	16	1,946	2,036	-4.4	18	1,964	2,015	-2.5
Maine	12	234	247	-5.2	-	249	254	-1.9
Massachusetts	68	3,489	3,628	-3.8	67	3,606	3,691	-2.3
New Hampshire	23	505	535	-5.7	25	496	509	-2.7
New Jersey	30	4,193	4,442	-5.6	34	4,217	4,316	-2.3
New York	86	6,884	7,133	-3.5	83	6,785	7,007	-3.2
Pennsylvania	13	4,717	4,879	-3.3	13	4,674	4,652	0.5
Rhode Island	39	624	641	-2.7	38	586	583	0.5
Vermont	10	114	122	-6.1	-	114	117	-2.7
Subtotal		<b>22,706</b>	<b>23,663</b>	<b>-4.0</b>		<b>22,691</b>	<b>23,144</b>	<b>-2.0</b>
<b>South Atlantic</b>								
Delaware	-	426	445	-4.2	-	419	425	-1.4
District of Columbia	1	239	231	3.2	1	265	246	7.6
Florida	110	8,440	9,365	-9.9	109	8,639	9,102	-5.1
Georgia	68	4,294	4,664	-7.9	74	3,993	4,181	-4.5
Maryland	26	3,126	3,275	-4.5	26	3,012	3,098	-2.8
North Carolina	-	3,592	3,844	-6.6	-	3,685	3,822	-3.6
South Carolina	48	1,607	1,719	-6.6	49	1,627	1,677	-3.0
Virginia	152	3,488	3,662	-4.7	154	3,512	3,589	-2.2
West Virginia	-	581	606	-4.1	-	584	594	-1.6
Subtotal		<b>25,793</b>	<b>27,811</b>	<b>-7.3</b>		<b>25,736</b>	<b>26,734</b>	<b>-3.7</b>
<b>North Central</b>								
Illinois	17	4,544	4,777	-4.9	15	4,703	4,742	-0.8
Indiana	29	1,981	2,123	-6.7	33	2,049	2,100	-2.5
Iowa	28	812	838	-3.2	28	802	810	-1.0
Kansas	18	983	1,046	-5.9	17	979	1,012	-3.2
Michigan	39	4,765	5,024	-5.2	44	4,778	4,965	-3.8
Minnesota	29	1,927	2,048	-5.9	29	1,886	1,981	-4.8
Missouri	50	2,317	2,446	-5.3	49	2,280	2,338	-2.5
Nebraska	13	538	563	-4.5	13	537	542	-0.9
North Dakota	7	126	133	-5.4	7	136	141	-3.6
Ohio	95	4,592	4,780	-3.9	94	4,509	4,588	-1.7
South Dakota	7	166	177	-6.3	8	161	167	-4.0
Wisconsin	53	1,978	2,099	-5.8	51	1,942	2,006	-3.2
Subtotal		<b>24,729</b>	<b>26,054</b>	<b>-5.1</b>		<b>24,762</b>	<b>25,392</b>	<b>-2.5</b>
<b>South Gulf</b>								
Alabama	-	1,756	1,924	-8.8	-	1,699	1,784	-4.8
Arkansas	10	848	916	-7.5	11	910	937	-2.9
Kentucky	16	1,405	1,507	-6.8	19	1,360	1,410	-3.5
Louisiana	-	1,873	1,964	-4.6	-	1,814	1,853	-2.1
Mississippi	-	881	947	-7.0	-	918	957	-4.1
Oklahoma	-	1,734	1,819	-4.7	-	1,665	1,700	-2.1
Tennessee	5	2,558	2,746	-6.8	4	2,739	2,862	-4.3
Texas	51	10,683	11,198	-4.6	50	10,380	10,576	-1.9
Subtotal		<b>21,738</b>	<b>23,021</b>	<b>-5.6</b>		<b>21,485</b>	<b>22,079</b>	<b>-2.7</b>
<b>West</b>								
Alaska	44	167	178	-5.9	42	169	177	-4.1
Arizona	7	2,298	2,471	-7.0	15	2,568	2,627	-2.2
California	7	19,801	20,604	-3.9	28	19,494	20,330	-4.1
Colorado	19	2,288	2,425	-5.7	17	1,999	2,086	-4.1
Hawaii	-	379	394	-3.8	9	392	403	-2.6
Idaho	-	394	420	-6.1	49	386	410	-5.9
Montana	-	178	190	-6.0	-	186	196	-5.5
Nevada	27	935	1,009	-7.3	29	927	987	-6.1
New Mexico	33	690	722	-4.4	34	721	732	-1.6
Oregon	20	1,276	1,357	-5.9	22	1,247	1,304	-4.3
Utah	24	1,113	1,215	-8.4	24	1,034	1,088	-5.0
Washington	31	2,957	3,100	-4.6	31	2,934	3,007	-2.4
Wyoming	-	148	158	-6.7	-	144	151	-4.9
Subtotal		<b>32,624</b>	<b>34,243</b>	<b>-4.7</b>		<b>32,201</b>	<b>33,498</b>	<b>-3.9</b>
<b>TOTALS</b>	<b>1,381</b>	<b>127,590</b>	<b>134,792</b>	<b>-5.3</b>	<b>1,463</b>	<b>126,875</b>	<b>130,847</b>	<b>-3.0</b>

Note: Where Number of Stations are shown as dashes, the values for the Vehicle-Miles and Percent Change are derived from the estimated VMT based on data from surrounding States or the nationwide average VMT.

Table - 5. Changes on ALL\* Estimated Roads by Region and State\*\*

Region and State	August				July			
	Number of Stations	Vehicle-Miles (Millions)		Percent Change	Number of Stations	Vehicle-Miles (Millions)		Percent Change
		2008 (Preliminary)	2007			2008 (Revised)	2007	
<b>Northeast</b>								
Connecticut	26	2,747	2,882	-4.7	28	2,764	2,847	-2.9
Maine	65	1,266	1,355	-6.6	-	1,332	1,376	-3.2
Massachusetts	77	4,671	4,886	-4.4	75	4,925	5,044	-2.4
New Hampshire	48	1,231	1,300	-5.3	49	1,202	1,247	-3.6
New Jersey	36	5,936	6,274	-5.4	39	5,959	6,113	-2.5
New York	154	12,511	12,965	-3.5	151	11,941	12,293	-2.9
Pennsylvania	59	9,816	9,936	-1.2	59	9,621	9,606	0.2
Rhode Island	40	819	836	-2.0	39	780	767	1.7
Vermont	50	725	759	-4.5	-	709	736	-3.5
Subtotal		<b>39,722</b>	<b>41,193</b>	<b>-3.6</b>		<b>39,233</b>	<b>40,029</b>	<b>-2.0</b>
<b>South Atlantic</b>								
Delaware	-	875	903	-3.1	-	887	902	-1.7
District of Columbia	1	338	328	3.2	1	367	341	7.6
Florida	205	15,667	17,357	-9.7	203	16,061	16,970	-5.4
Georgia	144	8,935	9,677	-7.7	168	9,106	9,513	-4.3
Maryland	51	5,018	5,279	-4.9	49	4,775	4,944	-3.4
North Carolina	-	8,361	8,995	-7.1	-	8,526	8,920	-4.4
South Carolina	131	4,142	4,473	-7.4	132	4,272	4,477	-4.6
Virginia	269	6,957	7,339	-5.2	270	6,973	7,221	-3.4
West Virginia	-	1,753	1,839	-4.7	-	1,716	1,773	-3.2
Subtotal		<b>52,046</b>	<b>56,190</b>	<b>-7.4</b>		<b>52,683</b>	<b>55,061</b>	<b>-4.3</b>
<b>North Central</b>								
Illinois	22	8,537	8,924	-4.3	18	8,757	8,884	-1.4
Indiana	83	5,606	5,945	-5.7	89	6,133	6,347	-3.4
Iowa	133	2,730	2,800	-2.5	134	2,716	2,792	-2.7
Kansas	94	2,511	2,664	-5.7	88	2,543	2,638	-3.6
Michigan	95	8,665	9,136	-5.2	100	8,658	9,060	-4.4
Minnesota	69	4,909	5,181	-5.3	68	4,697	4,957	-5.2
Missouri	133	6,160	6,487	-5.0	135	6,070	6,326	-4.0
Nebraska	53	1,734	1,795	-3.4	52	1,754	1,793	-2.2
North Dakota	41	753	761	-1.0	42	811	812	-0.2
Ohio	151	9,126	9,623	-5.2	152	9,558	9,777	-2.2
South Dakota	44	866	905	-4.3	45	891	907	-1.7
Wisconsin	134	5,365	5,568	-3.6	134	5,302	5,466	-3.0
Subtotal		<b>56,962</b>	<b>59,789</b>	<b>-4.7</b>		<b>57,890</b>	<b>59,759</b>	<b>-3.1</b>
<b>South Gulf</b>								
Alabama	-	4,988	5,470	-8.8	-	4,956	5,242	-5.5
Arkansas	39	2,713	2,922	-7.2	41	2,852	2,947	-3.2
Kentucky	92	3,971	4,271	-7.0	95	3,993	4,218	-5.3
Louisiana	-	4,078	4,329	-5.8	-	3,871	3,992	-3.0
Mississippi	-	3,282	3,539	-7.3	-	3,471	3,645	-4.8
Oklahoma	-	4,425	4,687	-5.6	-	4,259	4,388	-2.9
Tennessee	15	5,748	6,258	-8.1	12	6,098	6,474	-5.8
Texas	157	19,927	21,154	-5.8	156	19,605	20,176	-2.8
Subtotal		<b>49,132</b>	<b>52,630</b>	<b>-6.6</b>		<b>49,105</b>	<b>51,082</b>	<b>-3.9</b>
<b>West</b>								
Alaska	84	459	486	-5.5	79	466	493	-5.5
Arizona	51	4,299	4,621	-7.0	75	4,753	4,931	-3.6
California	15	28,151	29,455	-4.4	54	27,939	29,214	-4.4
Colorado	80	4,126	4,359	-5.3	62	3,792	3,960	-4.2
Hawaii	-	794	831	-4.4	13	830	842	-1.4
Idaho	-	1,399	1,489	-6.1	152	1,380	1,470	-6.1
Montana	52	1,130	1,202	-6.0	53	1,148	1,215	-5.5
Nevada	71	1,746	1,875	-6.9	73	1,759	1,870	-6.0
New Mexico	85	2,000	2,124	-5.8	90	2,057	2,139	-3.8
Oregon	115	3,276	3,491	-6.1	118	3,209	3,397	-5.5
Utah	60	2,325	2,503	-7.1	58	2,224	2,332	-4.6
Washington	81	5,181	5,458	-5.1	75	5,149	5,380	-4.3
Wyoming	-	935	987	-5.2	-	923	967	-4.6
Subtotal		<b>55,821</b>	<b>58,881</b>	<b>-5.2</b>		<b>55,629</b>	<b>58,210</b>	<b>-4.4</b>
<b>TOTALS</b>	<b>3,405</b>	<b>253,684</b>	<b>268,680</b>	<b>-5.6</b>	<b>3,526</b>	<b>254,542</b>	<b>264,136</b>	<b>-3.6</b>

Note: Where Number of Stations are shown as dashes, the values for the Vehicle-Miles and Percent Change are derived from the estimated VMT based on data from surrounding States or the nationwide average VMT. \* All Estimated roads include travel from Table 3 and 4 plus remaining roads.

Table - 6. Estimated Rural Vehicle Miles (Millions) and Percent Change from Same Period Previous Year\*\*

Year - 2007														
	<u>Rural Interstate</u>	<u>%</u>	<u>Rural Other Arterial</u>	<u>%</u>	<u>Other Rural</u>	<u>%</u>	<u>Total Rural</u>	<u>%</u>	<u>All Systems</u>	<u>%</u>				
Jan	18,905	-1.6	Jan	28,871	-1.3	Jan	28,231	-1.2	Jan	76,006	-1.3	Jan	230,926	-0.7
Feb	17,610	-1.9	Feb	27,374	-1.7	Feb	26,245	-2.4	Feb	71,229	-2.0	Feb	216,248	-1.6
Mar	21,389	0.8	Mar	33,084	1.1	Mar	32,241	0.5	Mar	86,714	0.8	Mar	256,463	0.3
Q1	<u>57,905</u>	-0.8	Q1	<u>89,328</u>	-0.5	Q1	<u>86,716</u>	-1.0	Q1	<u>233,949</u>	-0.8	Q1	<u>703,637</u>	-0.6
Apr	21,546	0.1	Apr	32,252	0.0	Apr	31,346	-0.5	Apr	85,144	-0.2	Apr	249,646	-0.1
May	22,897	1.3	May	34,858	1.0	May	34,017	0.7	May	91,773	1.0	May	264,231	0.8
Jun	22,808	0.6	Jun	35,010	-0.1	Jun	34,206	-0.1	Jun	92,023	0.1	Jun	262,374	-0.2
Q2	<u>67,251</u>	0.7	Q2	<u>102,119</u>	0.3	Q2	<u>99,569</u>	0.1	Q2	<u>268,940</u>	0.3	Q2	<u>776,251</u>	0.2
1st Half	125,156	0.0	1st Half	191,447	-0.1	1st Half	186,286	-0.4	1st Half	502,889	-0.2	1st Half	1,479,888	-0.2
Jul	24,143	0.4	Jul	36,944	0.8	Jul	34,639	0.3	Jul	95,727	0.5	Jul	264,136	0.6
Aug	24,265	3.5	Aug	36,809	2.9	Aug	34,653	1.5	Aug	95,728	2.5	Aug	268,680	1.5
Sep	21,071	0.0	Sep	33,072	-0.1	Sep	31,532	0.0	Sep	85,674	0.0	Sep	243,568	-0.6
Q3	<u>69,480</u>	1.4	Q3	<u>106,825</u>	1.2	Q3	<u>100,824</u>	0.6	Q3	<u>277,129</u>	1.0	Q3	<u>776,384</u>	0.5
Oct	21,869	-0.3	Oct	34,304	0.7	Oct	33,041	0.6	Oct	89,214	0.4	Oct	258,747	0.5
Nov	20,973	-0.4	Nov	31,553	-0.2	Nov	29,478	-1.3	Nov	82,004	-0.6	Nov	243,280	-0.6
Dec	20,134	-4.3	Dec	30,105	-4.1	Dec	28,056	-4.9	Dec	78,294	-4.4	Dec	238,179	-4.0
Q4	<u>62,975</u>	-1.6	Q4	<u>95,962</u>	-1.1	Q4	<u>90,575</u>	-1.8	Q4	<u>249,512</u>	-1.5	Q4	<u>740,206</u>	-1.4
2nd Half	132,455	-0.1	2nd Half	202,786	0.1	2nd Half	191,400	-0.5	2nd Half	526,641	-0.2	2nd Half	1,516,590	-0.4
<b>Year</b>	<b>257,611</b>	<b>-0.1</b>	<b>Year</b>	<b>394,234</b>	<b>0.0</b>	<b>Year</b>	<b>377,686</b>	<b>-0.5</b>	<b>Year</b>	<b>1,029,530</b>	<b>-0.2</b>	<b>Year</b>	<b>2,996,478</b>	<b>-0.3</b>

Year - 2008														
	<u>Rural Interstate</u>	<u>%</u>	<u>Rural Other Arterial</u>	<u>%</u>	<u>Other Rural</u>	<u>%</u>	<u>Total Rural</u>	<u>%</u>	<u>All Systems</u>	<u>%</u>				
Jan	18,518	-2.0	Jan	28,358	-1.8	Jan	27,665	-2.0	Jan	74,541	-1.9	Jan	227,299	-1.6
Feb	17,409	-1.1	Feb	27,276	-0.4	Feb	26,013	-0.9	Feb	70,698	-0.7	Feb	215,273	-0.5
Mar	20,785	-2.8	Mar	31,491	-4.8	Mar	30,225	-6.3	Mar	82,501	-4.9	Mar	245,094	-4.4
Q1	<u>56,712</u>	-2.1	Q1	<u>87,125</u>	-2.5	Q1	<u>83,904</u>	-3.2	Q1	<u>227,740</u>	-2.7	Q1	<u>687,666</u>	-2.3
Apr	20,348	-5.6	Apr	31,282	-3.0	Apr	30,755	-1.9	Apr	82,385	-3.2	Apr	245,568	-1.6
May	22,018	-3.8	May	33,444	-4.1	May	32,376	-4.8	May	87,839	-4.3	May	254,116	-3.8
Jun	21,285	-6.7	Jun	32,924	-6.0	Jun	32,346	-5.4	Jun	86,555	-5.9	Jun	249,921	-4.7
Q2	<u>63,651</u>	-5.4	Q2	<u>97,650</u>	-4.4	Q2	<u>95,478</u>	-4.1	Q2	<u>256,779</u>	-4.5	Q2	<u>749,606</u>	-3.4
1st Half	120,363	-3.8	1st Half	184,774	-3.5	1st Half	179,382	-3.7	1st Half	484,519	-3.7	1st Half	1,437,272	-2.9
Jul	22,831	-5.4	Jul	35,364	-4.3	Jul	33,054	-4.6	Jul	91,250	-4.7	Jul	254,542	-3.6
Aug	22,754	-6.2	Aug	34,779	-5.5	Aug	32,678	-5.7	Aug	90,212	-5.8	Aug	253,684	-5.6
Sep			Sep			Sep			Sep			Sep		
Q3	<u>45,586</u>	-5.8	Q3	<u>70,143</u>	-4.9	Q3	<u>65,733</u>	-5.1	Q3	<u>181,462</u>	-5.2	Q3	<u>508,226</u>	-4.6
Oct			Oct			Oct			Oct			Oct		
Nov			Nov			Nov			Nov			Nov		
Dec			Dec			Dec			Dec			Dec		
Q4		0.0	Q4		0.0	Q4		0.0	Q4		0.0	Q4		0.0
2nd Half	45,586	-5.8	2nd Half	70,143	-4.9	2nd Half	65,733	-5.1	2nd Half	181,462	-5.2	2nd Half	508,226	-4.6
<b>Year</b>	<b>165,949</b>	<b>-4.4</b>	<b>Year</b>	<b>254,918</b>	<b>-3.9</b>	<b>Year</b>	<b>245,114</b>	<b>-4.1</b>	<b>Year</b>	<b>665,981</b>	<b>-4.1</b>	<b>Year</b>	<b>1,945,498</b>	<b>-3.3</b>

**Table - 7. Estimated Urban Vehicle Miles (Millions) and Percent Change from Same Period Previous Year\*\***

<b>Year - 2007</b>														
<u>Urban Interstate</u> %			<u>Urban Other Arterial</u> %			<u>Other Urban</u> %			<u>Total Urban</u> %			<u>All Systems</u> %		
Jan	37,257	-0.1	Jan	83,349	-0.8	Jan	34,314	0.2	Jan	154,919	-0.4	Jan	230,926	-0.7
Feb	34,746	-0.9	Feb	78,204	-1.6	Feb	32,069	-1.1	Feb	145,019	-1.3	Feb	216,248	-1.6
Mar	40,400	-0.4	Mar	91,644	0.0	Mar	37,705	0.8	Mar	169,749	0.1	Mar	256,463	0.3
Q1	<u>112,403</u>	-0.4	Q1	<u>253,197</u>	-0.8	Q1	<u>104,088</u>	0.0	Q1	<u>469,688</u>	-0.5	Q1	<u>703,637</u>	-0.6
Apr	39,682	0.2	Apr	87,908	0.0	Apr	36,912	-0.1	Apr	164,502	0.0	Apr	249,646	-0.1
May	42,151	0.6	May	91,947	0.5	May	38,361	1.0	May	172,459	0.7	May	264,231	0.8
Jun	42,055	0.0	Jun	90,917	-0.6	Jun	37,379	-0.2	Jun	170,351	-0.4	Jun	262,374	-0.2
Q2	<u>123,888</u>	0.2	Q2	<u>270,772</u>	0.0	Q2	<u>112,651</u>	0.2	Q2	<u>507,311</u>	0.1	Q2	<u>776,251</u>	0.2
1st Half	236,291	-0.1	1st Half	523,969	-0.4	1st Half	216,739	0.1	1st Half	976,999	-0.2	1st Half	1,479,888	-0.2
Jul	40,493	1.2	Jul	90,354	0.3	Jul	37,563	0.7	Jul	168,410	0.6	Jul	264,136	0.6
Aug	41,713	1.1	Aug	93,080	0.8	Aug	38,159	1.2	Aug	172,952	1.0	Aug	268,680	1.5
Sep	38,849	-0.9	Sep	83,844	-1.1	Sep	35,201	-0.7	Sep	157,894	-1.0	Sep	243,568	-0.6
Q3	<u>121,055</u>	0.5	Q3	<u>267,278</u>	0.0	Q3	<u>110,923</u>	0.4	Q3	<u>499,255</u>	0.2	Q3	<u>776,384</u>	0.5
Oct	40,663	0.3	Oct	91,613	0.6	Oct	37,256	0.5	Oct	169,533	0.5	Oct	258,747	0.5
Nov	39,377	-0.7	Nov	86,192	-0.8	Nov	35,707	-0.1	Nov	161,276	-0.6	Nov	243,280	-0.6
Dec	37,823	-4.6	Dec	85,492	-3.6	Dec	36,570	-3.2	Dec	159,885	-3.7	Dec	238,179	-4.0
Q4	<u>117,863</u>	-1.6	Q4	<u>263,297</u>	-1.2	Q4	<u>109,533</u>	-0.9	Q4	<u>490,694</u>	-1.3	Q4	<u>740,206</u>	-1.4
2nd Half	238,918	-0.6	2nd Half	530,575	-0.6	2nd Half	220,455	-0.3	2nd Half	989,949	-0.5	2nd Half	1,516,590	-0.4
<b>Year</b>	<b>475,209</b>	<b>-0.3</b>	<b>Year</b>	<b>1,054,544</b>	<b>-0.5</b>	<b>Year</b>	<b>437,195</b>	<b>-0.1</b>	<b>Year</b>	<b>1,966,948</b>	<b>-0.4</b>	<b>Year</b>	<b>2,996,478</b>	<b>-0.3</b>

<b>Year - 2008</b>														
<u>Urban Interstate</u> %			<u>Urban Other Arterial</u> %			<u>Other Urban</u> %			<u>Total Urban</u> %			<u>All Systems</u> %		
Jan	36,792	-1.2	Jan	82,012	-1.6	Jan	33,953	-1.1	Jan	152,758	-1.4	Jan	227,299	-1.6
Feb	34,542	-0.6	Feb	78,026	-0.2	Feb	32,008	-0.2	Feb	144,575	-0.3	Feb	215,273	-0.5
Mar	38,954	-3.6	Mar	87,654	-4.4	Mar	35,985	-4.6	Mar	162,593	-4.2	Mar	245,094	-4.4
Q1	<u>110,288</u>	-1.9	Q1	<u>247,691</u>	-2.2	Q1	<u>101,946</u>	-2.1	Q1	<u>459,926</u>	-2.1	Q1	<u>687,666</u>	-2.3
Apr	39,239	-1.1	Apr	87,455	-0.5	Apr	36,490	-1.1	Apr	163,183	-0.8	Apr	245,568	-1.6
May	40,672	-3.5	May	88,705	-3.5	May	36,900	-3.8	May	166,278	-3.6	May	254,116	-3.8
Jun	40,514	-3.7	Jun	86,824	-4.5	Jun	36,029	-3.6	Jun	163,366	-4.1	Jun	249,921	-4.7
Q2	<u>120,424</u>	-2.8	Q2	<u>262,984</u>	-2.9	Q2	<u>109,419</u>	-2.9	Q2	<u>492,827</u>	-2.9	Q2	<u>749,606</u>	-3.4
1st Half	230,712	-2.4	1st Half	510,675	-2.5	1st Half	211,366	-2.5	1st Half	952,753	-2.5	1st Half	1,437,272	-2.9
Jul	39,269	-3.0	Jul	87,601	-3.0	Jul	36,422	-3.0	Jul	163,292	-3.0	Jul	254,542	-3.6
Aug	39,678	-4.9	Aug	87,913	-5.6	Aug	35,881	-6.0	Aug	163,473	-5.5	Aug	253,684	-5.6
Sep			Sep			Sep			Sep			Sep		
Q3	<u>78,947</u>	-4.0	Q3	<u>175,514</u>	-4.3	Q3	<u>72,303</u>	-4.5	Q3	<u>326,764</u>	-4.3	Q3	<u>508,226</u>	-4.6
Oct			Oct			Oct			Oct			Oct		
Nov			Nov			Nov			Nov			Nov		
Dec			Dec			Dec			Dec			Dec		
Q4		0.0	Q4		0.0	Q4		0.0	Q4		0.0	Q4		0.0
2nd Half	78,947	-4.0	2nd Half	175,514	-4.3	2nd Half	72,303	-4.5	2nd Half	326,764	-4.3	2nd Half	508,226	-4.6
<b>Year</b>	<b>309,659</b>	<b>-2.8</b>	<b>Year</b>	<b>686,189</b>	<b>-3.0</b>	<b>Year</b>	<b>283,669</b>	<b>-3.0</b>	<b>Year</b>	<b>1,279,517</b>	<b>-2.9</b>	<b>Year</b>	<b>1,945,498</b>	<b>-3.3</b>



Figure - 1. Moving 12-Month Total on ALL Roads

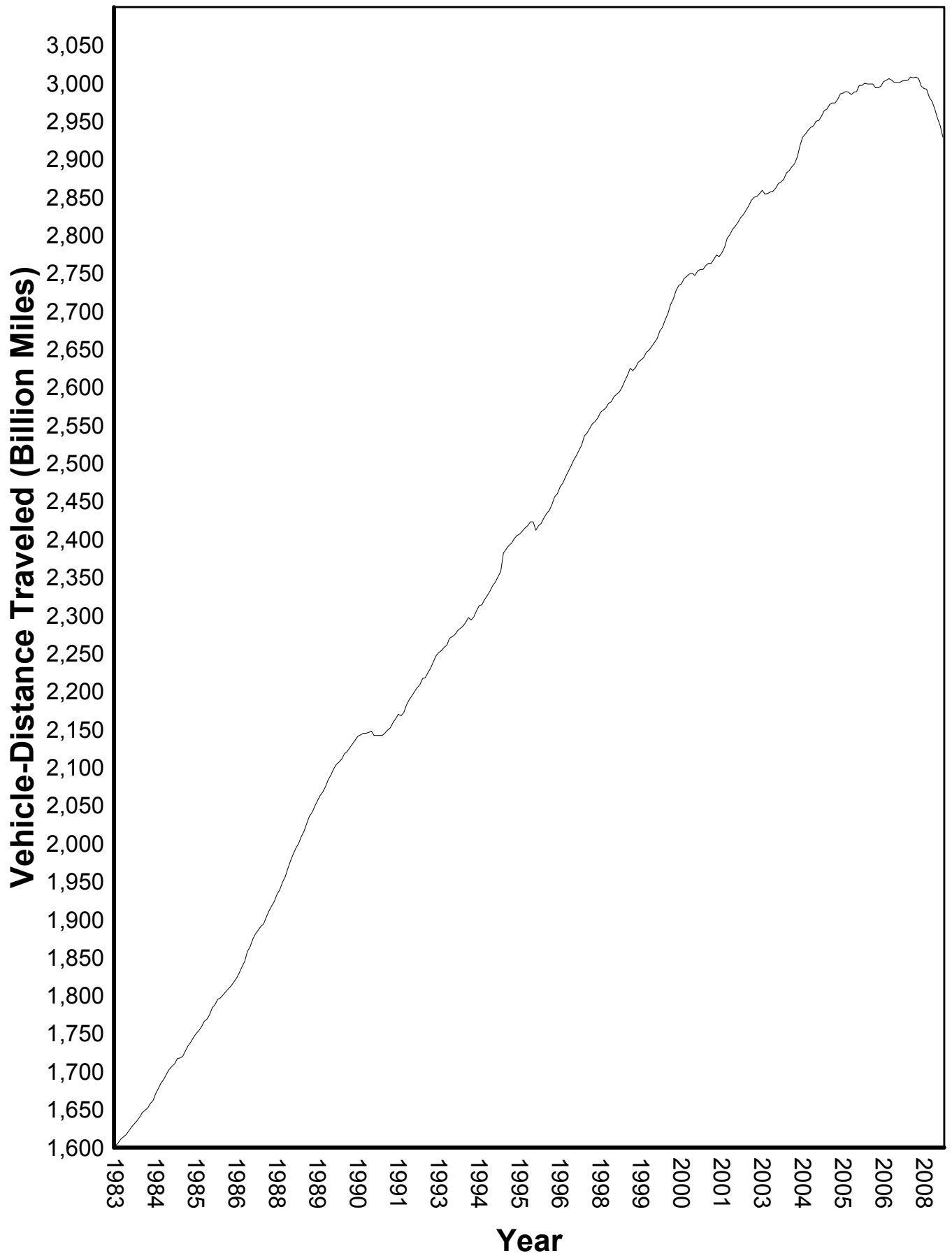
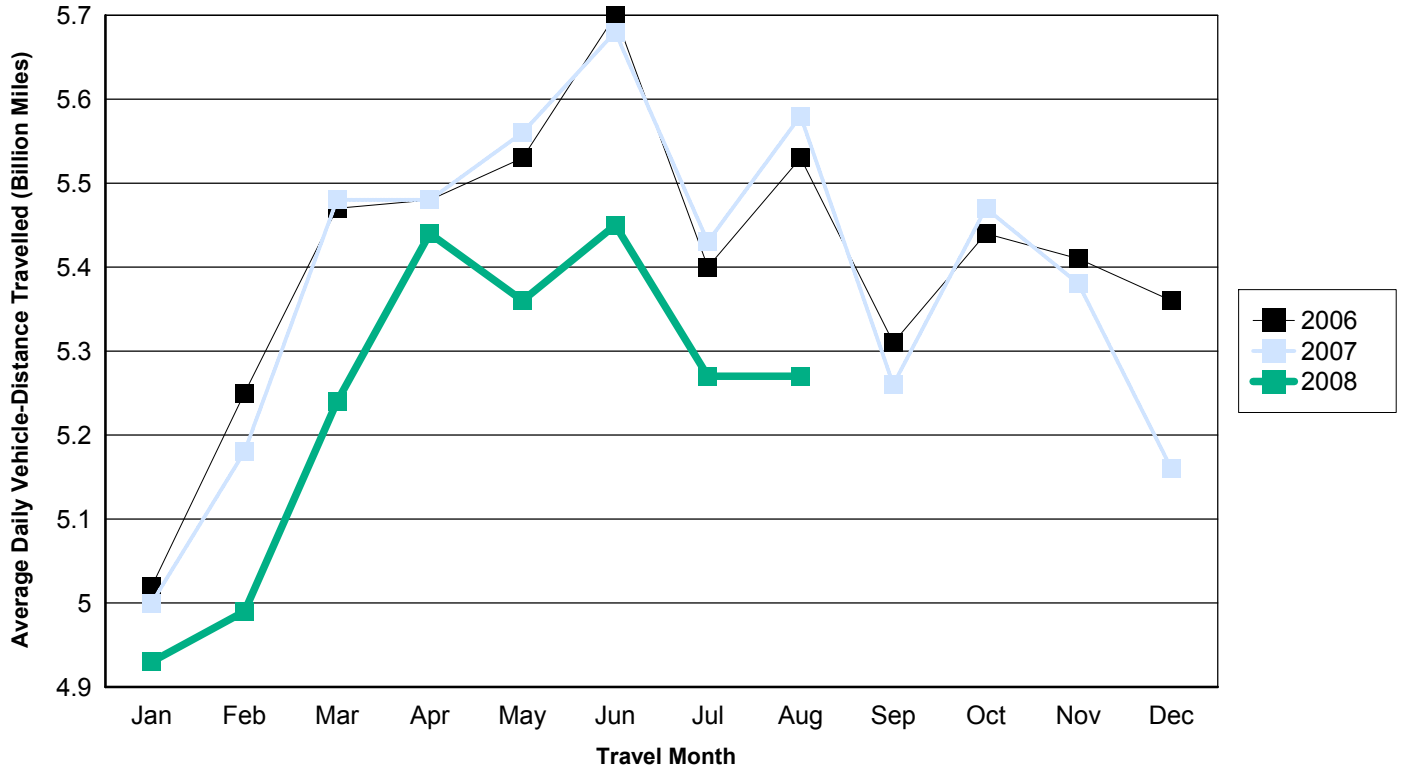


Figure - 2. Travel on U.S. Highways by Month

Urban Highways



Rural Highways

