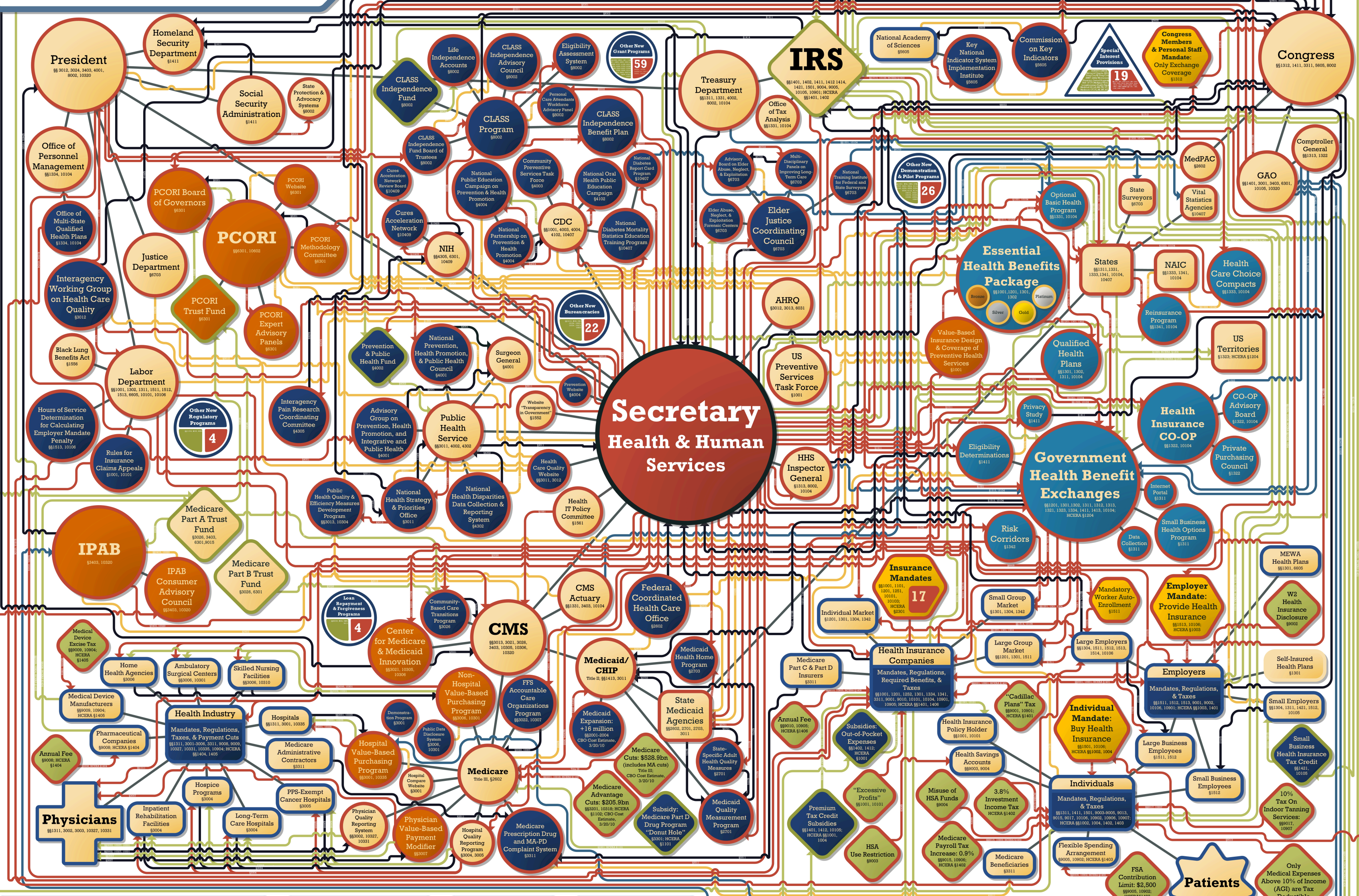


Your New Health Care System



New Government		Expanded Government		Private		New Relationships	
Rationing Potential	Mandates	Government with Expanded Authority/Responsibility	Government Financial Entity with New Inflows/Outflows	Private Entity with New Mandates/Regulations/Responsibilities	Unchanged Private Entity	Regulations/Requirements/Mandates	Reporting Requirements
Involvement in Health Insurance Market	Taxes & Monetary Fees/Penalties/Cuts	State/Territory with Expanded Authority/Responsibility	Other New Trust Funds/Monetary Benefits	Special Interest Provisions		Oversight	Money Flows
Other Expansions	Trust Fund (Rationing Potential)					Consultation/Advisory/Info Sharing	Structural Connections (Includes Existing)
Represents Bundles of Additional Entities							

AGI: Adjusted Gross Income
AHRQ: Agency for Healthcare Research and Quality
CDC: Centers for Disease Control and Prevention
CHIP: Children's Health Insurance Program
CLASS: Community Living Assistance Services & Supports
CMS: Centers for Medicare & Medicaid Services
CO-OP: Consumer Operated & Oriented Program
FFS: Fee-for-Service
FSA: Flexible Spending Arrangement
GAO: Government Accountability Office
HCERA: Health Care & Education Reconciliation Act
HHS: Health & Human Services Department
HSA: Health Savings Account
IPAB: Independent Payment Advisory Board
IRS: Internal Revenue Service
MA-PD: Medicare Advantage Prescription Drug
MedPAC: Medicare Payment Advisory Commission
MERD: Medical Early Risk Detection
EALORS: Executive Auxiliary Linked Office Regional Systems
MEWA: Multiple Employer Welfare Arrangement
NAIC: National Association of Insurance Commissioners
NIH: National Institutes of Health
PCORI: Patient-Centered Outcomes Research Institute
PPS: Prospective Payment System

Patient Protection & Affordable Care Act, P.L. 111-148; Health Care & Education Reconciliation Act, P.L. 111-152
 Prepared by: Joint Economic Committee, Republican Staff
 Congressman Kevin Brady, Senior House Republican
 Senator Sam Brownback, Ranking Member