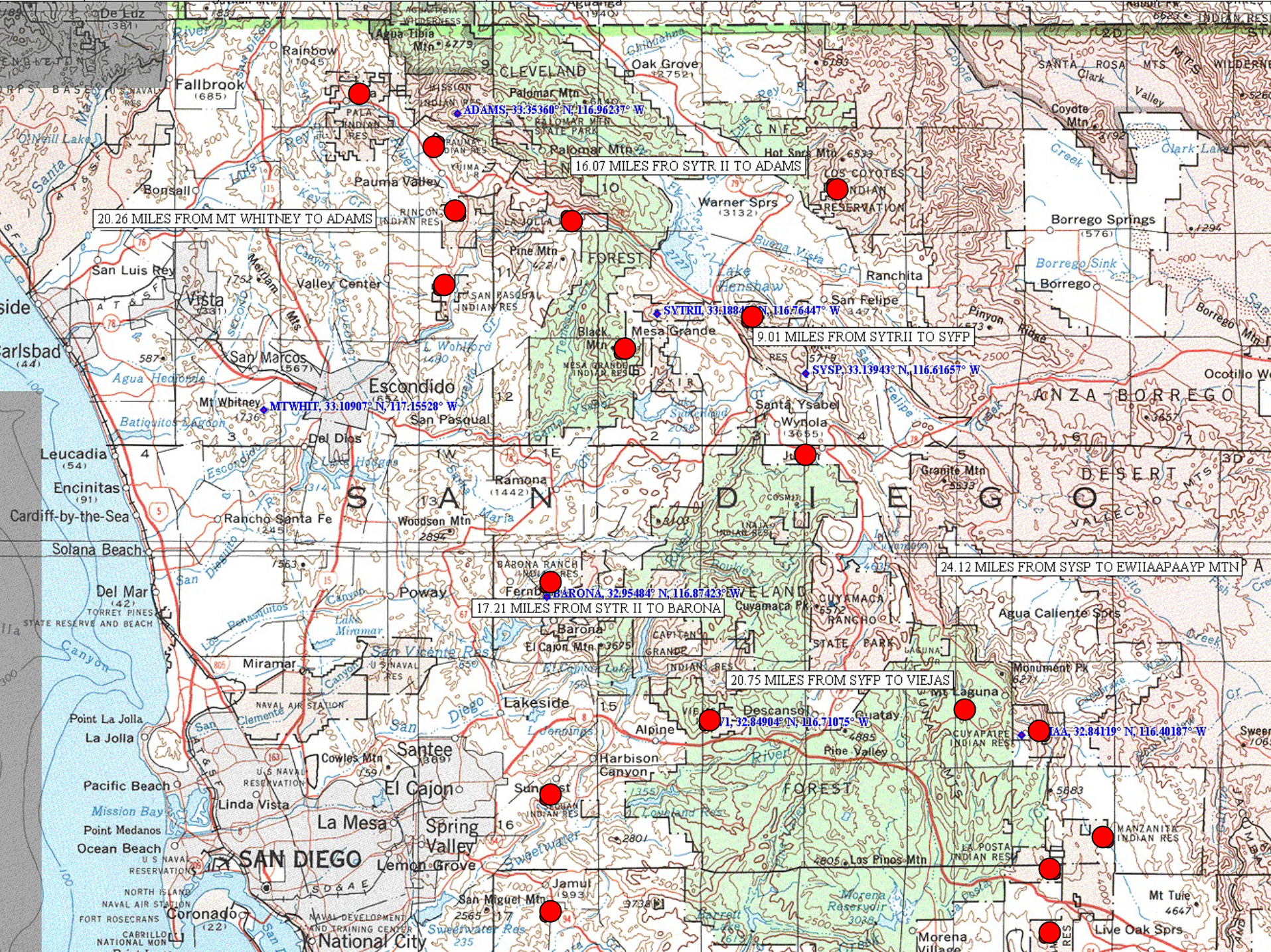


Tribal Digital Village

Southern California Tribal Chairmen's Association





20.26 MILES FROM MT WHITNEY TO ADAMS

16.07 MILES FRO SYTR II TO ADAMS

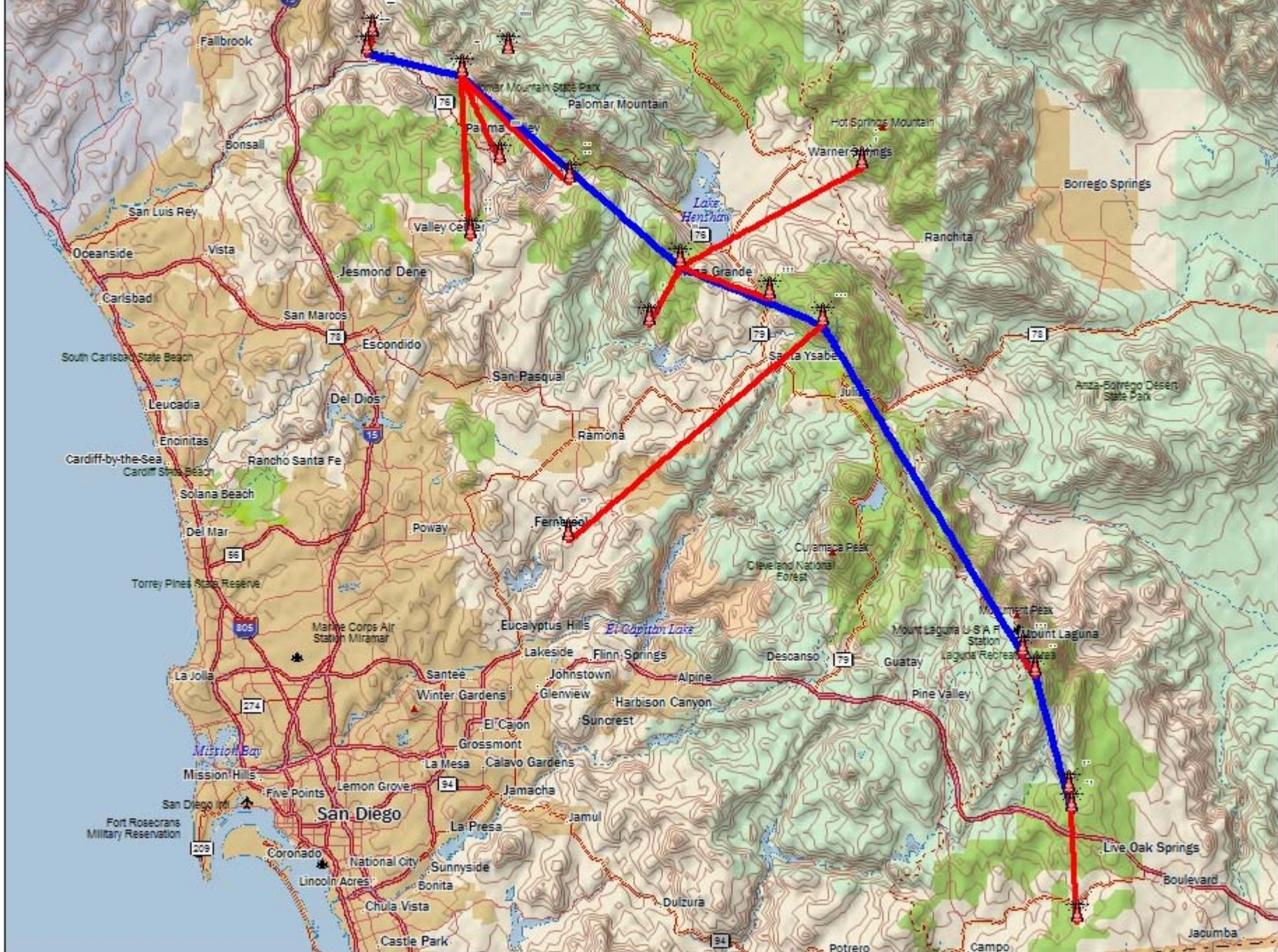
9.01 MILES FROM SYTR II TO SYFP

24.12 MILES FROM SYSP TO EWIIAPPAYP MTN

17.21 MILES FROM SYTR II TO BARONA

20.75 MILES FROM SYFP TO VIJAS

20.75 MILES FROM SYFP TO VIJAS



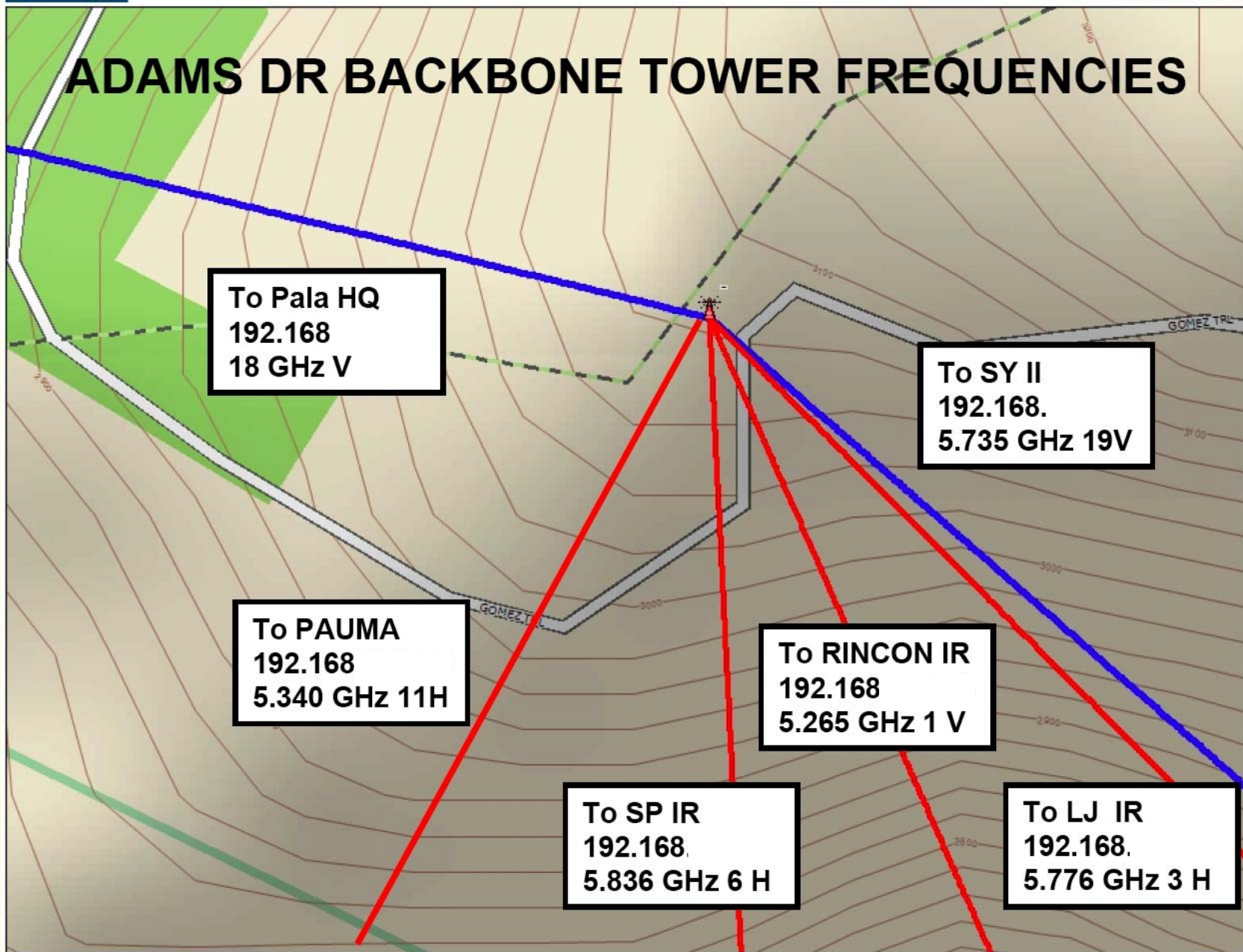
Data use subject to license

© DeLorme, DeLorme Topo USA © 2010





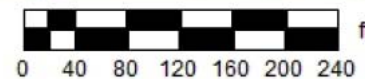
ADAMS DR BACKBONE TOWER FREQUENCIES



Data use subject to license.

© DeLorme. DeLorme Topo USA® 7.0.

www.delorme.com



Data Zoom 17-0

SANTA YSABEL TRACT II TOWER



RINCON INTERMEDIATE RELAY TOWER



PALA INTERMEDIATE RELAY TOWER



**SAN PASQUAL INTERMEDIATE
RELAY TOWER**



TWO DIRECTIONS TANF TRAINING FACILITY



Two Directions, Inc.



TANF Training
Office #39
(760) 749-5521
(760) 749-1196

**TRIBAL COURTS
AND RINCON
TRIBAL
SECURITY OFFICE**





COLLABORATION WITH 88.9 KRTM RADIO

- 198 FT TOWER
- PROVIDE REMOTE CONNECTION FOR EMERGENCY SHUTOFF
- PROVIDE TOWER MAINTENANCE AND ANTENNA SERVICE
- IN EXCHANGE FOR SPACE ON TOWER TO PROVIDE A BROADER COVERAGE AREA FOR SCTT INTERNET CONNECTIONS

High Performance Wireless Research and Education Network



Mesa Grande area TDVnet backbone site 360-degree view 33.19N 116.76W at about 4280 feet

Large image for: [North](#) - [East](#) - [South](#) - [West](#)



Differential image for: [North](#) - [East](#) - [South](#) - [West](#)





http://hpwren.ucsd.edu/cameras/MesaGrande.html

File Edit View Favorites Tools Help

Web Search Bookmarks Settings Mail My My Yahoo! Answers

Favorites Suggested Sites Free Hotmail Web Slice Gallery

eHarmony - Getting To Know... Cameras from various HP... x

Page Safety Tools

Real-time generated animations:

	North	East	South	West
Last	00-03 . 03-06	00-03 . 03-06	00-03 . 03-06	00-03 . 03-06
	06-09 . 09-12	06-09 . 09-12	06-09 . 09-12	06-09 . 09-12
	12-15 . 15-18	12-15 . 15-18	12-15 . 15-18	12-15 . 15-18
	18-21 . 21-24	18-21 . 21-24	18-21 . 21-24	18-21 . 21-24
Previous	00-03 . 03-06	00-03 . 03-06	00-03 . 03-06	00-03 . 03-06
	06-09 . 09-12	06-09 . 09-12	06-09 . 09-12	06-09 . 09-12
	12-15 . 15-18	12-15 . 15-18	12-15 . 15-18	12-15 . 15-18
	18-21 . 21-24	18-21 . 21-24	18-21 . 21-24	18-21 . 21-24
By date	animations	animations	animations	animations
Folders by date	images	images	images	images

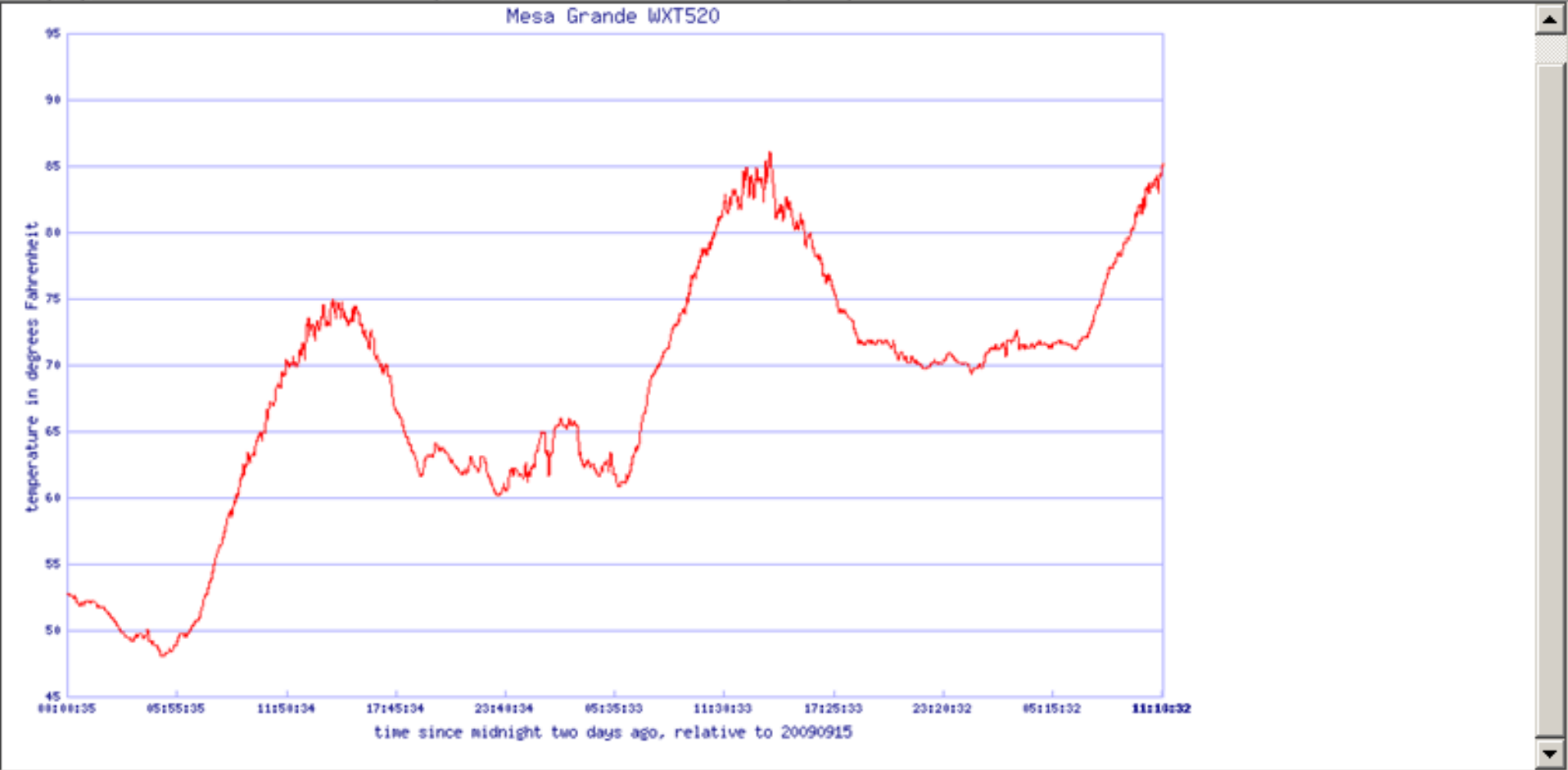
Weather station [meteorological data](#) for this site

[Disclaimer and descriptions](#) for contents of this page.

HPWREN multicast-based weather station data display
20090917 11:12:32 - Mesa Grande: 33.19N 116.76W 4280'

Vaisala WXT520 sensor data, updated once per minute
 graphs are since midnight two days ago

Wind direction minimum	008	degrees	
Wind direction average	018	degrees	
Wind direction maximum	037	degrees	
Wind speed minimum	3.1	m/sec	6.9 Mph
Wind speed average	4.1	m/sec	9.2 Mph
Wind speed maximum	4.9	m/sec	11.0 Mph
Air temperature	29.5	Celsius	85.1 Fahrenheit
Relative humidity	17.4	percent	
Air pressure (not altitude adjusted)	871.3	hPa (millibar)	25.7 inHg
Rain accumulation	8.38	mm	0.33 Inch
Rain duration	9570	seconds	
Rain intensity	0.0	mm/h	0.00 Inch/h
Hail accumulation	0.0	hits/(cm ²)	
Hail duration	0	seconds	
Hail intensity	0.0	hits/(cm ² h)	
Supplied voltage	27.2	Volt	





TDV NETWORK OVERVIEW

- **45MB DS3 FIBER CONNECTION @ TDV/SCTT HQ**
- **108 MB LICENSED LINK FROM TDV HQ TO
ADAMS DRIVE**
- **250+ MILES OF POINT TO POINT &
POINT TO MULTI-POINT LINKS**
- **18 BACKBONE/RELAY SITES**
- **42 OFFICE CONNECTIONS**
- **44 HOMES CONNECTED**
- **MANY NEW CONNECTIONS COMING!!!**

CURRENT PROJECTS

- **CONNECTIONS TO HOMES IN PALA**
- **ESTABLISH CONNECTION TO TORO PEAK**
- **REBUILDING IR @ SANTA ROSA**
- **CONNECTION TO CAHUILLA & SOBOBA**
- **NEW RINCON IR TO SERVICE SOUTH SIDE**
- **UPGRADE EACH BACKBONE NODE WITH A WIND GENERATOR AND A BACK-UP PROPANE GENERATOR**