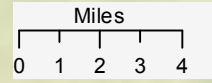
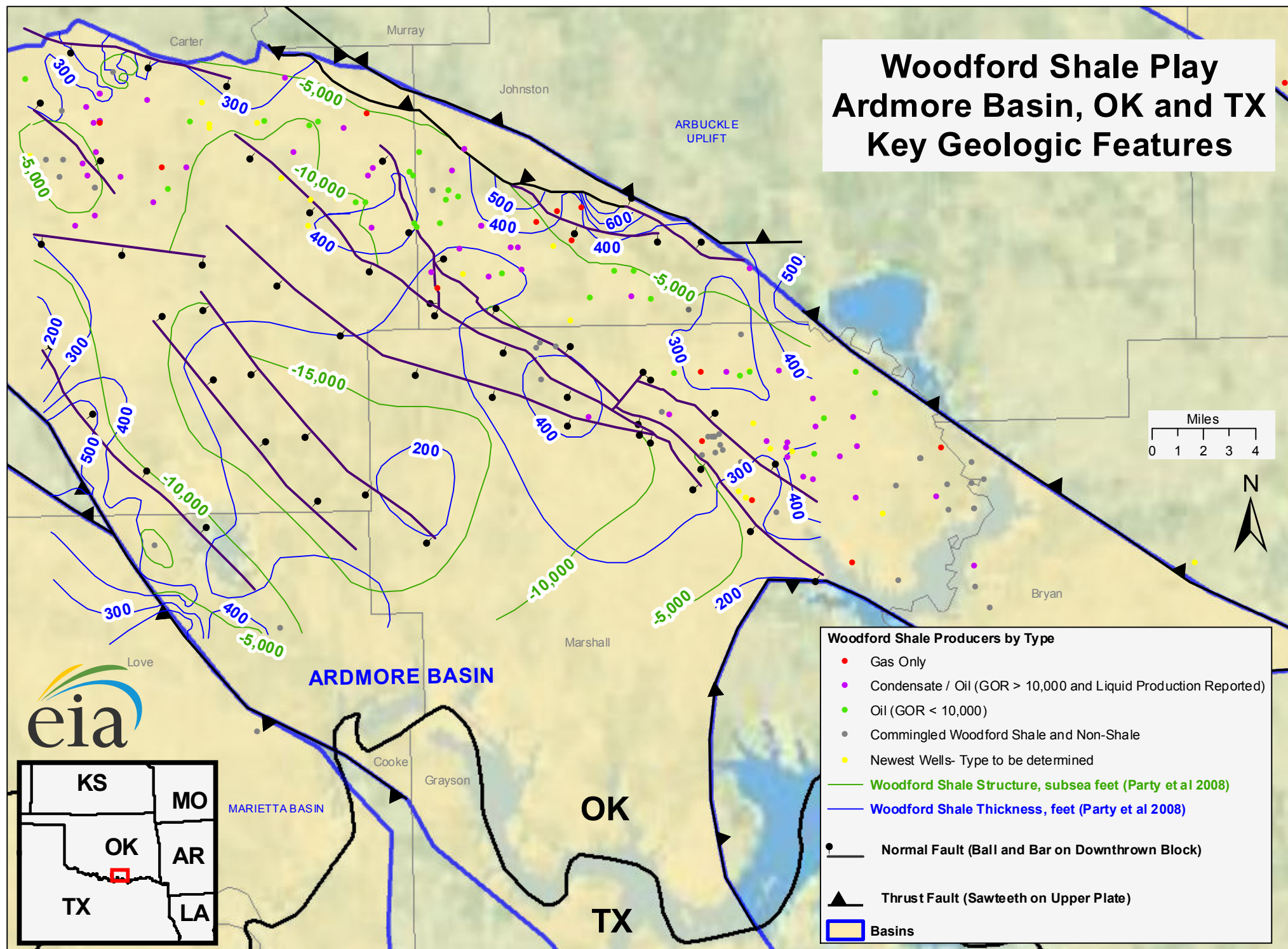
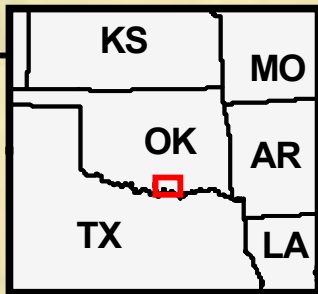


Woodford Shale Play Ardmore Basin, OK and TX Key Geologic Features



- Woodford Shale Producers by Type**
- Gas Only
 - Condensate / Oil (GOR > 10,000 and Liquid Production Reported)
 - Oil (GOR < 10,000)
 - Commingled Woodford Shale and Non-Shale
 - Newest Wells- Type to be determined
 - Woodford Shale Structure, subsea feet (Party et al 2008)
 - Woodford Shale Thickness, feet (Party et al 2008)
 - Normal Fault (Ball and Bar on Downthrown Block)
 - ▲ Thrust Fault (Sawteeth on Upper Plate)
 - Basins



Source: US Energy Information Administration based on well data from HPDI and B. Cardott (OK Geological Survey). Only wells producing from the Woodford Shale with first production after 1-1-2001 are shown. Basins and faults from Northcutt & Campbell (1995), Party et al (2008). Updated: June 1, 2011